



TRILOBITE TESTING, INC.

DRILL STEM TEST REPORT

Russell Oil, Inc.
 PO Box 8050
 Edmond, OK 73083
 ATTN: Kitt Noah

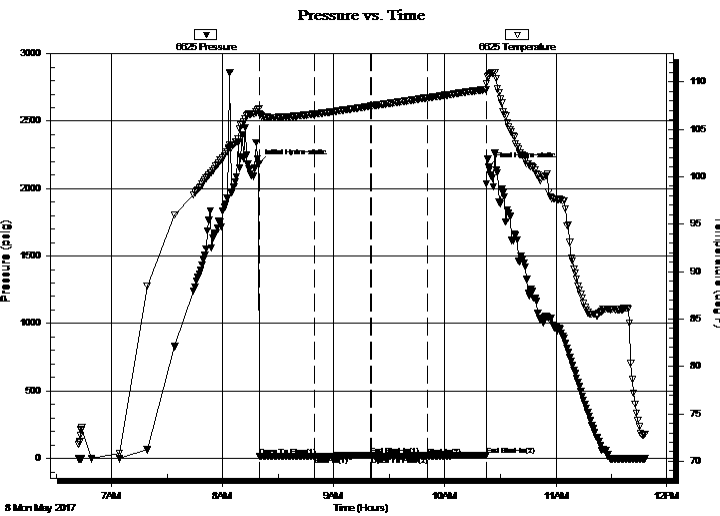
26/15s/35w Logan KS
Edwards Trust E#26-1
 Job Ticket: 65446 **DST#: 3**
 Test Start: 2017.05.08 @ 06:42:00

GENERAL INFORMATION:

Formation: **Ft. Scott**
 Deviated: No Whipstock: ft (KB)
 Time Tool Opened: 08:19:45
 Time Test Ended: 11:48:30
 Interval: **4476.00 ft (KB) To 4512.00 ft (KB) (TVD)**
 Total Depth: 4512.00 ft (KB) (TVD)
 Hole Diameter: 7.88 inches Hole Condition: Poor
 Test Type: Conventional Bottom Hole (Reset)
 Tester: James Winder
 Unit No: 83
 Reference Elevations: 3112.00 ft (KB)
 3107.00 ft (CF)
 KB to GR/CF: 5.00 ft

Serial #: 6625 Inside
 Press@RunDepth: 19.16 psig @ 4477.00 ft (KB) Capacity: 8000.00 psig
 Start Date: 2017.05.08 End Date: 2017.05.08 Last Calib.: 2017.05.08
 Start Time: 06:42:05 End Time: 11:48:29 Time On Btm: 2017.05.08 @ 08:19:30
 Time Off Btm: 2017.05.08 @ 10:23:45

TEST COMMENT: 30 - IF: Surface blow, dead at 15 min.
 30 - IS: No blow
 30 - FF: No blow
 30 - FS: No blow



PRESSURE SUMMARY

Time (Min.)	Pressure (psig)	Temp (deg F)	Annotation
0	2184.50	107.16	Initial Hydro-static
1	15.52	106.67	Open To Flow (1)
30	16.92	106.60	Shut-In(1)
61	23.66	107.45	End Shut-In(1)
61	15.52	107.44	Open To Flow (2)
91	19.16	108.33	Shut-In(2)
123	25.69	109.20	End Shut-In(2)
125	2159.19	110.66	Final Hydro-static

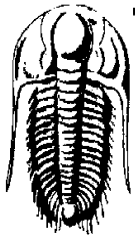
Recovery

Length (ft)	Description	Volume (bbl)
15.00	Mud w /trace oil 100%m	0.07

* Recovery from multiple tests

Gas Rates

Choke (inches)	Pressure (psig)	Gas Rate (Mcf/d)



**TRILOBITE
TESTING, INC.**

DRILL STEM TEST REPORT

Russell Oil, Inc.

26/15s/35w Logan KS

PO Box 8050
Edmond, OK 73083

Edwards Trust E#26-1

Job Ticket: 65446 **DST#: 3**

ATTN: Kitt Noah

Test Start: 2017.05.08 @ 06:42:00

GENERAL INFORMATION:

Formation: **Ft. Scott**

Deviated: No Whipstock: ft (KB)

Time Tool Opened: 08:19:45

Time Test Ended: 11:48:30

Test Type: Conventional Bottom Hole (Reset)

Tester: James Winder

Unit No: 83

Interval: 4476.00 ft (KB) To 4512.00 ft (KB) (TVD)

Reference Elevations: 3112.00 ft (KB)

Total Depth: 4512.00 ft (KB) (TVD)

3107.00 ft (CF)

Hole Diameter: 7.88 inches Hole Condition: Poor

KB to GR/CF: 5.00 ft

Serial #: 8017 Outside

Press@RunDepth: psig @ 4477.00 ft (KB)

Capacity: 8000.00 psig

Start Date: 2017.05.08

End Date:

2017.05.08

Last Calib.:

2017.05.08

Start Time: 06:42:05

End Time:

11:47:59

Time On Btm:

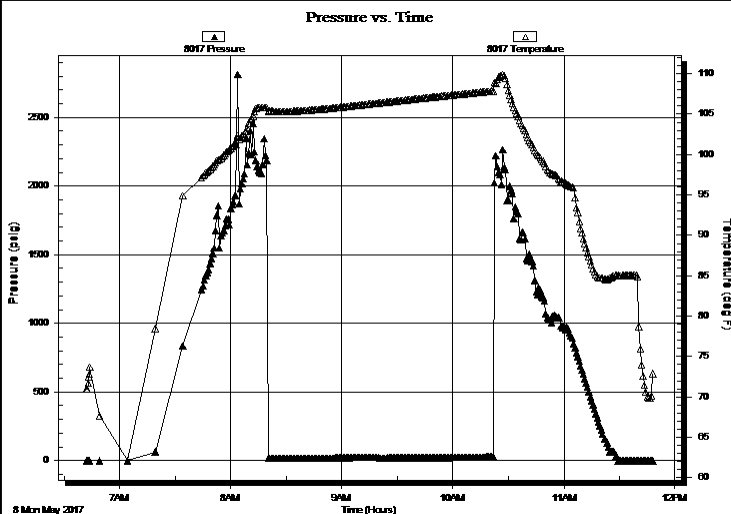
Time Off Btm:

TEST COMMENT: 30 - IF: Surface blow, dead at 15 min.

30 - IS: No blow

30 - FF: No blow

30 - FS: No blow



PRESSURE SUMMARY

Time (Min.)	Pressure (psig)	Temp (deg F)	Annotation

Recovery

Length (ft)	Description	Volume (bbl)
15.00	Mud w /trace oil 100%m	0.07

Gas Rates

	Choke (inches)	Pressure (psig)	Gas Rate (Mcf/d)

* Recovery from multiple tests



**TRILOBITE
TESTING, INC.**

DRILL STEM TEST REPORT

FLUID SUMMARY

Russell Oil, Inc.

26/15s/35w Logan KS

PO Box 8050
Edmond, OK 73083

Edwards Trust E#26-1

Job Ticket: 65446

DST#: 3

ATTN: Kitt Noah

Test Start: 2017.05.08 @ 06:42:00

Mud and Cushion Information

Mud Type: Gel Chem

Cushion Type:

Oil API:

deg API

Mud Weight: 9.00 lb/gal

Cushion Length:

ft

Water Salinity:

ppm

Viscosity: 64.00 sec/qt

Cushion Volume:

bbbl

Water Loss: 7.99 in³

Gas Cushion Type:

Resistivity: ohm.m

Gas Cushion Pressure:

psig

Salinity: 5500.00 ppm

Filter Cake: 1.00 inches

Recovery Information

Recovery Table

Length ft	Description	Volume bbl
15.00	Mud w /trace oil 100%m	0.074

Total Length: 15.00 ft Total Volume: 0.074 bbl

Num Fluid Samples: 0

Num Gas Bombs: 0

Serial #:

Laboratory Name:

Laboratory Location:

Recovery Comments:

