

# DIAMOND TESTING GENERAL REPORT

**Jake Fahrenbruch, Tester**

Cell: (620) 282-8977 / Office: (800) 542-7313

## DIAMOND TESTING



### TEST INFORMATION

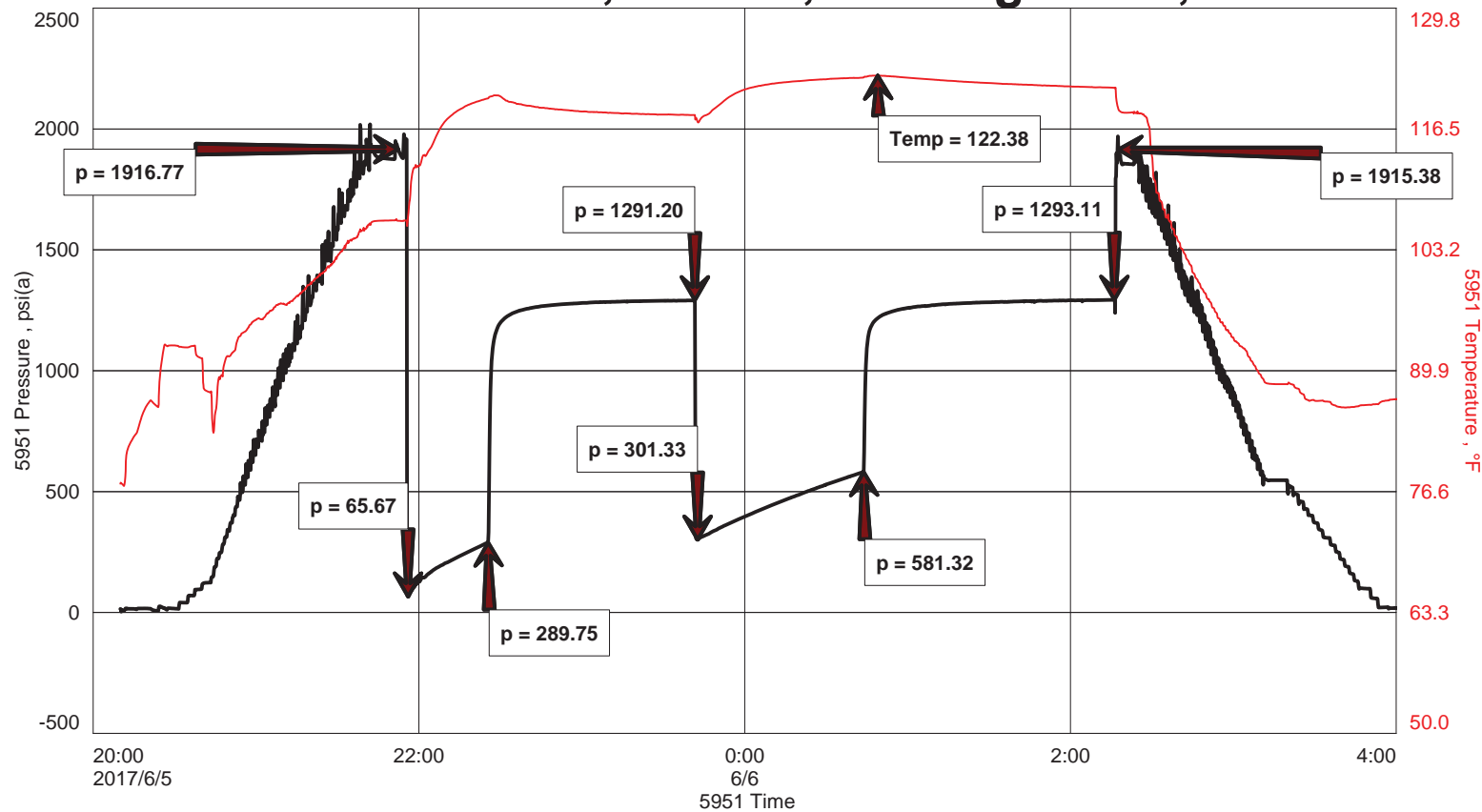
<b>Well Name</b>	McMannis 'B' Unit #1-34
<b>Company Name</b>	Trans Pacific Oil Corp
<b>Formation</b>	DST #2, Lansing CDEF, 3975'-4030'
<b>Test Type</b>	Bottom-Hole w/safety joint
<b>Surface Location</b>	Sec 34-26s-15w
<b>KB Elevation (SL)</b>	2066.000
<b>Gauge Name</b>	5951
<b>Start Test Date</b>	2017/06/05
<b>Start Test Time</b>	20:10:00
<b>Final Test Date</b>	2017/06/06
<b>Final Test Time</b>	04:42:00
<b>Job Number</b>	F479
<b>Contact</b>	Bryce Bidleman
<b>Site Contact</b>	Bryce Bidleman

### TEST RESULTS

Initial flow, blow inc to BOB in 3 minutes. Blowback increased to 3".  
 Final flow, blow inc to BOB in 6 minutes 50 seconds. Blowback increased to BOB.

**TOTAL RECOVERED FLUID: 1185'**  
 240' WM 42% wtr, 58% mud  
 945' W 100% wtr  
 ----- 500' Gas In Pipe  
 ----- Chlorides: 99,000 PPM  
 ----- RW: .08 ohm @ 70 Deg F  
 ----- PH: 7.0

## McMannis 'B' Unit #1-34, DST #2, Lansing CDEF, 3975'-4030'





**DIAMOND TESTING**  
 P.O. Box 157  
 HOISINGTON, KANSAS 67544  
 (800) 542-7313

**DRILL-STEM TEST TICKET**  
 FILE: MCMANNIS BIDST2

ON LOCATION:	<u>19:45</u>
START RECORDERS:	<u>20:10 6-5</u>
STOP RECORDERS:	<u>04:42 6-6</u>

Company TRANS PACIFIC OIL CORP Lease & Well No. MCMANNIS 'B' UNIT #1-34  
 Contractor STERLING DRILL RIG #4 Charge to T.P.O.C.  
 Elevation 2066' KB Formation LANSING CDEF Effective Pay \_\_\_\_\_ Ft. Ticket No. F479  
 Date 6/6/17 Sec. 34 Twp. 26S Range 15N County PRAIRIE State KS  
 Test Approved By BRYLE BIDDLEMAN Diamond Representative JAKE FAHRENBRUCH

Formation Test No. 2 Interval Tested from 3975 ft. to 4030 ft. Total Depth 4030 ft.  
 Packer Depth 3970 ft. Size 6 3/4 in. Packer depth \_\_\_\_\_ ft. Size 6 3/4 in.  
 Packer Depth 3975 ft. Size 6 3/4 in. Packer depth \_\_\_\_\_ ft. Size 6 3/4 in.

Depth of Selective Zone Set \_\_\_\_\_

Top Recorder Depth (Inside) 3977 ft. Recorder Number 5951 Cap. 6000 P.S.I.  
 Bottom Recorder Depth (Outside) 3978 ft. Recorder Number 5586 Cap. 6000 P.S.I.  
 Below Straddle Recorder Depth \_\_\_\_\_ ft. Recorder Number \_\_\_\_\_ Cap. \_\_\_\_\_ P.S.I.  
 Mud Type Chemical Viscosity 51 (4#2CM) Drill Collar Length 216 ft. I.D. 2 1/4 in.  
 Weight 9.0 Water Loss 9.0 cc. Weight Pipe Length \_\_\_\_\_ ft. I.D. 2 7/8 in.  
 Chlorides 2000 P.P.M. Drill Pipe Length 3736 ft. I.D. 3 1/2 in.  
 Jars: Make STERLING Serial Number #5 SJ Test Tool Length 23 ft. Tool Size 3 1/2-IF in.  
 Did Well Flow? \_\_\_\_\_ Reversed Out \_\_\_\_\_ Anchor Length 55 ft. Size 4 1/2-FH in.  
 Main Hole Size 7 7/8 Tool Joint Size 4 1/2 XH in. Surface Choke Size 2 1/2 in. Bottom Choke Size 5/8 in.

Blow: 1st Open: BLOW INC. TO BOB IN 3 MIN. BLOW BACK @ 3"  
 2nd Open: BLOW INC TO BOB IN 6min 50sec. BLOWBACK @ BOB

Recovered 240 ft. of WM 42" wtr, 58" mud  
 Recovered 945 ft. of W 100% wtr  
 Recovered \_\_\_\_\_ ft. of 500' GIP

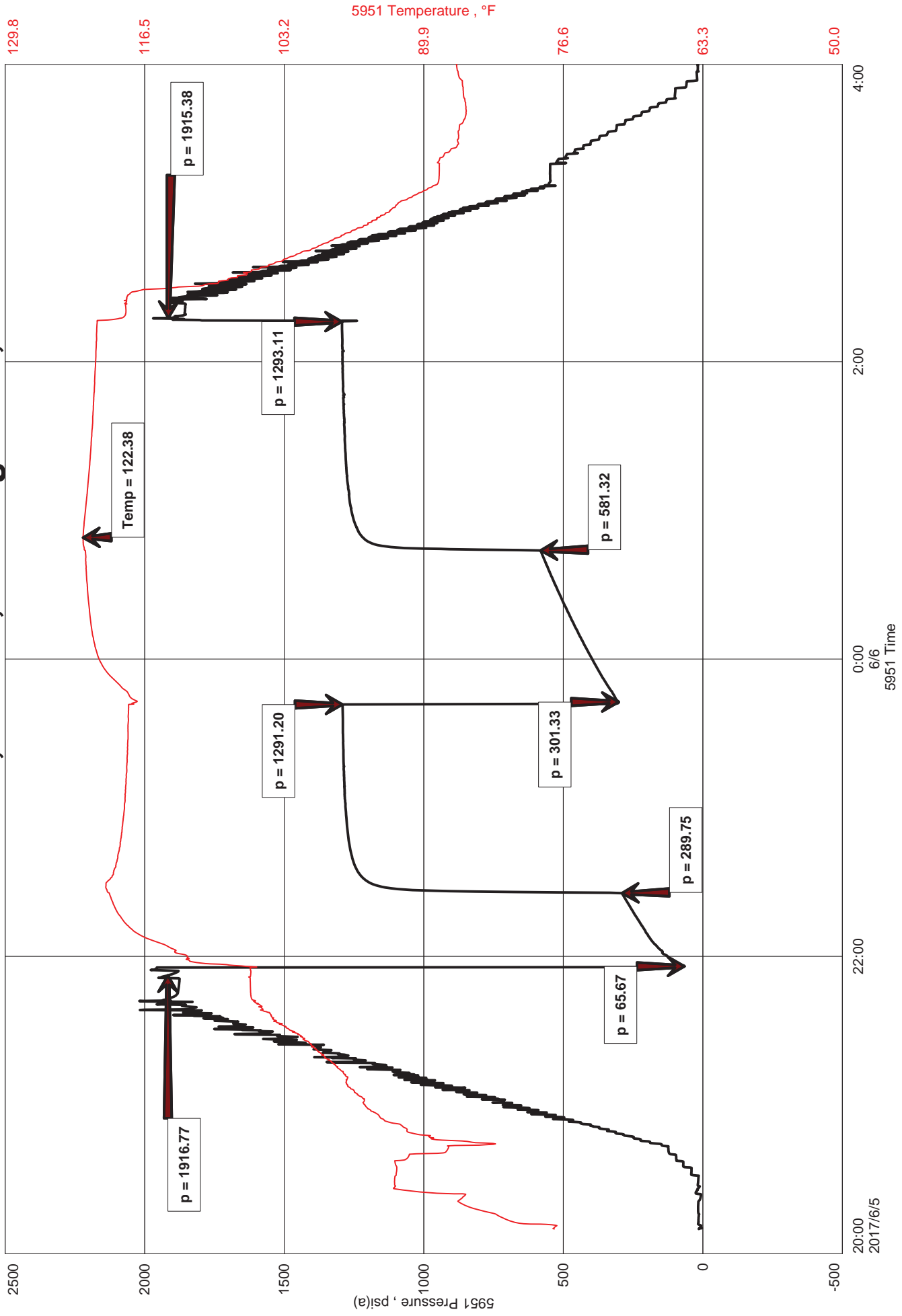
Recovered _____ ft. of _____	Price Job
Recovered _____ ft. of _____	Other Charges
Remarks: <u>TOTAL RECOVERED FLUID: 1185'</u>	<u>Safety Joint</u>
<u>Chlorides: 99,000 PPM</u>	<u>38 MRT (PRAT)</u>
<u>RW: .082 @ 70F</u> <u>PH: 7.0</u>	Total

Time Set Packer(s) 21:56 A.M. P.M. Time Started Off Bottom 02:11 A.M. P.M. Maximum Temperature 122 F

Initial Hydrostatic Pressure \_\_\_\_\_ (A) 1917 P.S.I.  
 Initial Flow Period \_\_\_\_\_ Minutes 30 (B) 66 P.S.I. to (C) 290 P.S.I.  
 Initial Closed In Period \_\_\_\_\_ Minutes 75 (D) 1291 P.S.I.  
 Final Flow Period \_\_\_\_\_ Minutes 60 (E) 301 P.S.I. to (F) 581 P.S.I.  
 Final Closed In Period \_\_\_\_\_ Minutes 90 (G) 1293 P.S.I. Thanks!  
 Final Hydrostatic Pressure \_\_\_\_\_ (H) 1915 P.S.I. Prot & Fahrenbruch

Diamond Testing shall not be liable for damages of any kind to the property or personnel of the one for whom a test is made or for any loss suffered or sustained, directly or indirectly, through the use of its equipment, or its statement or opinion concerning the result of any test. Tools lost or damaged in the hole shall be paid for at cost by the party for whom the test is made.

# McMannis 'B' Unit #1-34, DST #2, Lansing CDEF, 3975'-4030'





**DIAMOND TESTING**  
 P.O. Box 157  
 HOISINGTON, KANSAS 67544  
 (800) 542-7313

TIME ON: 20:10 6/5  
 TIME OFF: 04:42 6/6

**DRILL-STEM TEST TICKET**  
 FILE: MCMANNISB1DST2

Company Trans Pacific Oil Corp. Lease & Well No. McMannis 'B' Unit #1-34  
 Contractor Sterling Drlg. Rig #4 Charge to T.P.O.C.  
 Elevation 2066' KB Formation Lansing CDEF Effective Pay \_\_\_\_\_ Ft. Ticket No. F479  
 Date 6/6/17 Sec. 34 Twp. 26 S Range 15 W County Pratt State KANSAS  
 Test Approved By Bryce Bidleman Diamond Representative Jake Fahrenbruch

Formation Test No. 2 Interval Tested from 3975 ft. to 4030 ft. Total Depth 4030 ft.  
 Packer Depth 3970 ft. Size 6 3/4 in. Packer depth ----- ft. Size 6 3/4 in.  
 Packer Depth 3975 ft. Size 6 3/4 in. Packer depth ----- ft. Size 6 3/4 in.  
 Depth of Selective Zone Set -----

Top Recorder Depth (Inside) 3977 ft. Recorder Number 5951 Cap. 5000 P.S.I.  
 Bottom Recorder Depth (Outside) 3978 ft. Recorder Number 5586 Cap. 5000 P.S.I.  
 Below Straddle Recorder Depth ----- ft. Recorder Number ----- Cap. ----- P.S.I.

Mud Type CHEMICAL Viscosity 51 (4# LCM) Drill Collar Length 216 ft. I.D. 2 1/4 in.  
 Weight 9.0 Water Loss 9.0 cc. Weight Pipe Length 0 ft. I.D. 2 7/8 in.  
 Chlorides 2,000 P.P.M. Drill Pipe Length 3,736 ft. I.D. 3 1/2 in.  
 Jars: Make STERLING Serial Number #5 Safety Joint Test Tool Length 23 ft. Tool Size 3 1/2-IF in.  
 Did Well Flow? ----- Reversed Out ----- Anchor Length 55 ft. Size 4 1/2-FH in.  
 Main Hole Size 7 7/8 Tool Joint Size 4 1/2 XH in. 21' Perf in anchor Surface Choke Size 1 in. Bottom Choke Size 5/8 in.

Blow: 1st Open: Blow inc to BOB in 3 minutes. Blowback inc to 3".  
 2nd Open: Blow inc to BOB in 6 minutes 50 seconds. blowback inc to BOB.

Recovered 240 ft. of WM 42% wtr, 58% mud  
 Recovered 945 ft. of W 100% wtr  
 Recovered \_\_\_\_\_ ft. of 500' Gas In Pipe  
 Recovered \_\_\_\_\_ ft. of \_\_\_\_\_  
 Recovered \_\_\_\_\_ ft. of \_\_\_\_\_  
 Recovered \_\_\_\_\_ ft. of \_\_\_\_\_

Remarks: TOTAL RECOVERED FLUID: 1185'  
Chlorides: 99,000 PPM  
RW: .08 @ 70 F PH: 7.0

Time Set Packer(s) 21:56 A.M. P.M. Time Started Off Bottom 02:11 A.M. P.M. Maximum Temperature 122 F

Initial Hydrostatic Pressure..... (A) 1917 P.S.I.  
 Initial Flow Period..... Minutes 30 (B) 66 P.S.I. to (C) 290 P.S.I.  
 Initial Closed In Period..... Minutes 75 (D) 1291 P.S.I.  
 Final Flow Period..... Minutes 60 (E) 301 P.S.I. to (F) 581 P.S.I.  
 Final Closed In Period..... Minutes 90 (G) 1293 P.S.I.  
 Final Hydrostatic Pressure..... (H) 1915 P.S.I.

Diamond Testing shall not be liable for damages of any kind to the property or personnel of the one for whom a test is made or for any loss suffered or sustained, directly or indirectly, through the use of its equipment, or its statement or opinion concerning the result of any test. Tools lost or damaged in the hole shall be paid for at cost by the party for whom the test is made.