

DIAMOND TESTING GENERAL REPORT

Jake Fahrenbruch, Tester

Cell: (620) 282-8977 / Office: (800) 542-7313

DIAMOND TESTING



TEST INFORMATION

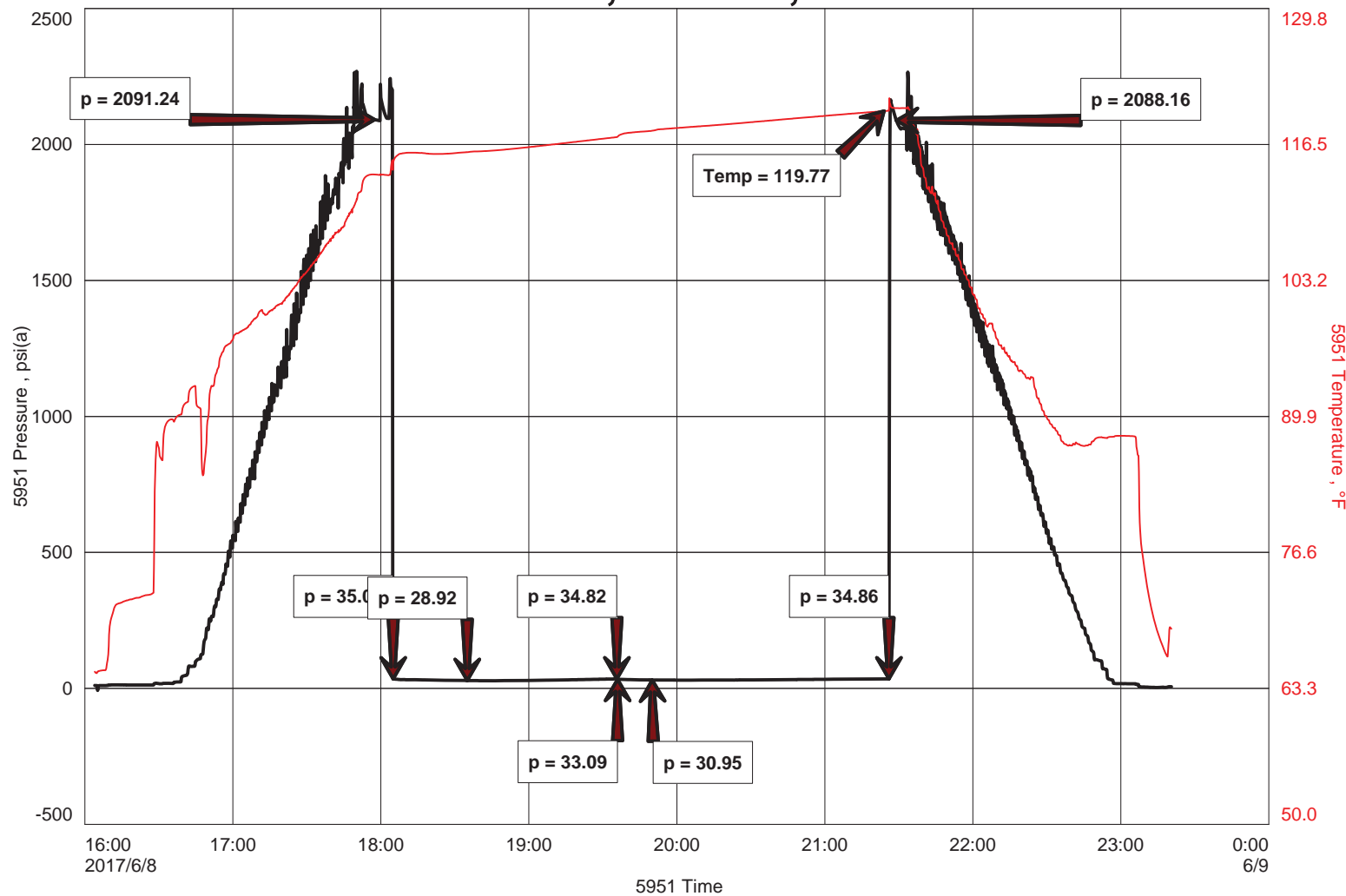
Well Name	McMannis 'B' Unit #1-34
Company Name	Trans Pacific Oil Corp
Formation	DST #5, Cherokee, 4366'-4385'
Test Type	Bottom-Hole w/safety joint
Surface Location	Sec 34-26s-15w-Pratt Co.-KS
KB Elevation (SL)	2066.000
Gauge Name	5951
Start Test Date	2017/06/08
Start Test Time	16:04:00
Final Test Date	2017/06/08
Final Test Time	23:21:00
Job Number	F482
Contact	Bryce Bidleman
Site Contact	Max Lovely

TEST RESULTS

Initial flow, weak blow, increased to .25" in 10 minutes, blow died.
Final flow, no blow.

Recovered 5' of drilling mud.

McMannis 'B' Unit #1-34, DST #5, Cherokee 4366'-4385'





DIAMOND TESTING
P.O. Box 157
HOISINGTON, KANSAS 67544
(800) 542-7313
DRILL-STEM TEST TICKET
FILE: McMANNIS B1D5T5

ON LOCATION:	<u>15:30</u>
START RECORDERS:	<u>16:04</u>
STOP RECORDERS:	<u>23:21</u>

Company TRANS PACIFIC OIL CORP Lease & Well No. McMANNIS 'B' UNIT #1-34
Contractor STERLING DRUG REG #4 Charge to T.P.O.C.
Elevation 2066' KB Formation CHEROKEE Effective Pay _____ Ft. Ticket No. F482
Date 6/8/17 Sec. 34 Twp. 26S Range 15W County PRATT State KS
Test Approved By MAX LOVELY Diamond Representative JAKE FAHRENBRUCH

Formation Test No. 5 Interval Tested from 4366 ft. to 4385 ft. Total Depth 4385 ft.
Packer Depth 4361 ft. Size 6 3/4 in. Packer depth _____ ft. Size 6 3/4 in.
Packer Depth 4366 ft. Size 6 3/4 in. Packer depth _____ ft. Size 6 3/4 in.

Depth of Selective Zone Set _____
Top Recorder Depth (Inside) 4368 ft. Recorder Number 5951 Cap. 6000 P.S.I.
Bottom Recorder Depth (Outside) 4369 ft. Recorder Number 5586 Cap. 6000 P.S.I.
Below Straddle Recorder Depth _____ ft. Recorder Number _____ Cap. _____ P.S.I.

Mud Type CHEMICAL Viscosity 54 (4#LCM) Drill Collar Length 216 ft. I.D. 2 1/4 in.
Weight 9.1 Water Loss 9.0 cc. Weight Pipe Length _____ ft. I.D. 2 7/8 in.
Chlorides 5000 P.P.M. Drill Pipe Length 4127 ft. I.D. 3 1/2 in.
Jars: Make STERLING Serial Number #555 Test Tool Length 23 ft. Tool Size 3 1/2-IF in.
Did Well Flow? _____ Reversed Out _____ Anchor Length 19 ft. Size 4 1/2-FH in.
Main Hole Size 7 7/8 Tool Joint Size 4 1/2 XH in. Surface Choke Size 1 in. Bottom Choke Size 5/8 in.

Blow: 1st Open: WEAK BLOW, INC TO 1/4" IN 10 MIN, BLOW DIED
2nd Open: NO BLOW

Recovered 5 ft. of Drilg Mud 100% mud
Recovered _____ ft. of _____
Recovered _____ ft. of _____
Recovered _____ ft. of _____

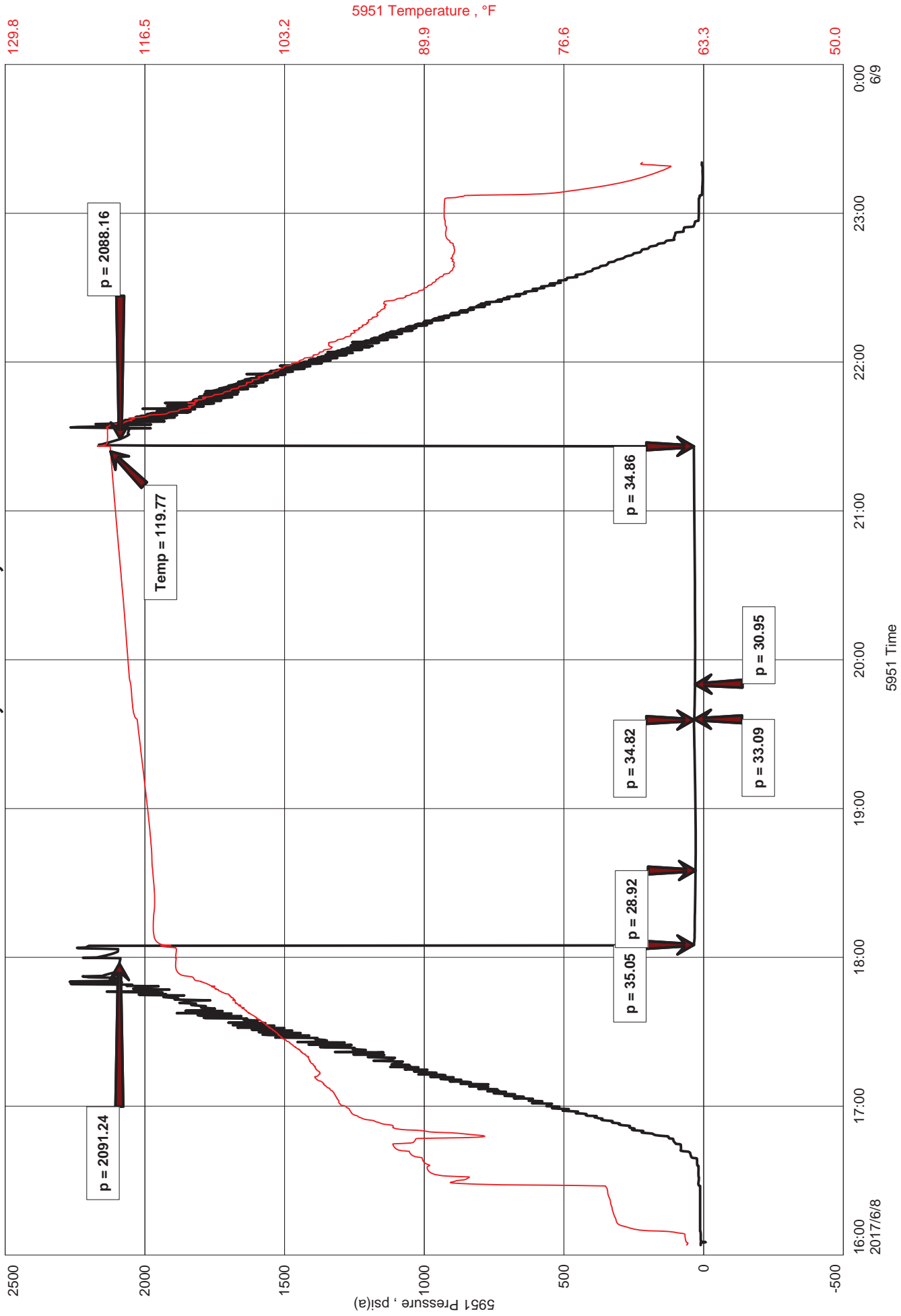
Recovered _____ ft. of _____	Price Job
Recovered _____ ft. of _____	Other Charges
Remarks: _____	<u>Safety Joint</u>
	<u>38 MRT (PRATT)</u>
	Total

Time Set Packer(s) 18:05 A.M. P.M. Time Started Off Bottom 21:20 A.M. P.M. Maximum Temperature 120°F

Initial Hydrostatic Pressure..... (A) 2091 P.S.I.
Initial Flow Period..... Minutes 30 (B) 35 P.S.I. to (C) 29 P.S.I.
Initial Closed In Period..... Minutes 60 (D) 35 P.S.I.
Final Flow Period..... Minutes 15 (E) 33 P.S.I. to (F) 31 P.S.I.
Final Closed In Period..... Minutes 90 (G) 35 P.S.I.
Final Hydrostatic Pressure..... (H) 2088 P.S.I.

Diamond Testing shall not be liable for damages of any kind to the property or personnel of the one for whom a test is made or for any loss suffered or sustained, directly or indirectly, through the use of its equipment, or its statement or opinion concerning the result of any test. Tools lost or damaged in the hole shall be paid for at cost by the party for whom the test is made.

McMannis 'B' Unit #1-34, DST #5, Cherokee 4366'-4385'





DIAMOND TESTING
 P.O. Box 157
 HOISINGTON, KANSAS 67544
 (800) 542-7313

TIME ON: 16:04
 TIME OFF: 23:21

DRILL-STEM TEST TICKET
 FILE: MCMANNISB1DST5

Company Trans Pacific Oil Corp. Lease & Well No. McMannis 'B' Unit #1-34
 Contractor Sterling Drlg. Rig #4 Charge to T.P.O.C.
 Elevation 2066' KB Formation Cherokee Effective Pay _____ Ft. Ticket No. F482
 Date 6/8/17 Sec. 34 Twp. 26 S Range 15 W County Pratt State KANSAS
 Test Approved By Max Lovely Diamond Representative Jake Fahrenbruch

Formation Test No. 5 Interval Tested from 4366 ft. to 4385 ft. Total Depth 4385 ft.
 Packer Depth 4361 ft. Size 6 3/4 in. Packer depth ----- ft. Size 6 3/4 in.
 Packer Depth 4366 ft. Size 6 3/4 in. Packer depth ----- ft. Size 6 3/4 in.
 Depth of Selective Zone Set -----

Top Recorder Depth (Inside) 4368 ft. Recorder Number 5951 Cap. 6000 P.S.I.
 Bottom Recorder Depth (Outside) 4369 ft. Recorder Number 5586 Cap. 6000 P.S.I.
 Below Straddle Recorder Depth ----- ft. Recorder Number ----- Cap. ----- P.S.I.

Mud Type CHEMICAL Viscosity 54 (4# LCM) Drill Collar Length 216 ft. I.D. 2 1/4 in.
 Weight 9.1 Water Loss 9.0 cc. Weight Pipe Length 0 ft. I.D. 2 7/8 in.
 Chlorides 5,000 P.P.M. Drill Pipe Length 4,127 ft. I.D. 3 1/2 in.
 Jars: Make STERLING Serial Number #5 Safety Joint Test Tool Length 23 ft. Tool Size 3 1/2-IF in.
 Did Well Flow? ----- Reversed Out ----- Anchor Length 19 ft. Size 4 1/2-FH in.
 Main Hole Size 7 7/8 Tool Joint Size 4 1/2 XH in. Surface Choke Size 1 in. Bottom Choke Size 5/8 in.

Blow: 1st Open: Weak blow, increased to .25" in 10 minutes, blow died.
 2nd Open: No blow.

Recovered <u>5</u> ft. of <u>Drilling Mud</u>	<u>100% mud</u>
Recovered _____ ft. of _____	
Recovered _____ ft. of _____	
Recovered _____ ft. of _____	
Recovered _____ ft. of _____	Price Job
Recovered _____ ft. of _____	Other Charges
Remarks: _____	Insurance
	Total

Time Set Packer(s) 18:05 A.M. P.M. Time Started Off Bottom 21:20 A.M. P.M. Maximum Temperature 120 F
 Initial Hydrostatic Pressure..... (A) 2091 P.S.I.
 Initial Flow Period..... Minutes 30 (B) 35 P.S.I. to (C) 29 P.S.I.
 Initial Closed In Period..... Minutes 60 (D) 35 P.S.I.
 Final Flow Period..... Minutes 15 (E) 33 P.S.I. to (F) 31 P.S.I.
 Final Closed In Period..... Minutes 90 (G) 35 P.S.I.
 Final Hydrostatic Pressure..... (H) 2088 P.S.I.

Diamond Testing shall not be liable for damages of any kind to the property or personnel of the one for whom a test is made or for any loss suffered or sustained, directly or indirectly, through the use of its equipment, or its statement or opinion concerning the result of any test. Tools lost or damaged in the hole shall be paid for at cost by the party for whom the test is made.