



**TRILOBITE
TESTING, INC.**

DRILL STEM TEST REPORT

Culbreath Oil & Gas Co Inc

3-5s.-35w. Rawlins Co.

3501 S. Yale Ave
Tulsa, OK 74135

Dewey Trust #2-3

ATTN: Larry Nichleson

Job Ticket: 61249

DST#: 2

Test Start: 2017.06.13 @ 02:43:00

GENERAL INFORMATION:

Formation: **LKC "J"**

Deviated: No Whipstock: ft (KB)

Time Tool Opened: 04:29:20

Time Test Ended: 09:49:39

Test Type: Conventional Bottom Hole (Reset)

Tester: Martine Salinas

Unit No: 82

Interval: 4300.00 ft (KB) To 4350.00 ft (KB) (TVD)

Reference Elevations: 3262.00 ft (KB)

Total Depth: 4350.00 ft (KB) (TVD)

3252.00 ft (CF)

Hole Diameter: 7.88 inches Hole Condition: Fair

KB to GR/CF: 10.00 ft

Serial #: 8322 Inside

Press@RunDepth: 248.20 psig @ 4301.00 ft (KB)

Capacity: 8000.00 psig

Start Date: 2017.06.13

End Date: 2017.06.13

Last Calib.: 2017.06.13

Start Time: 02:43:01

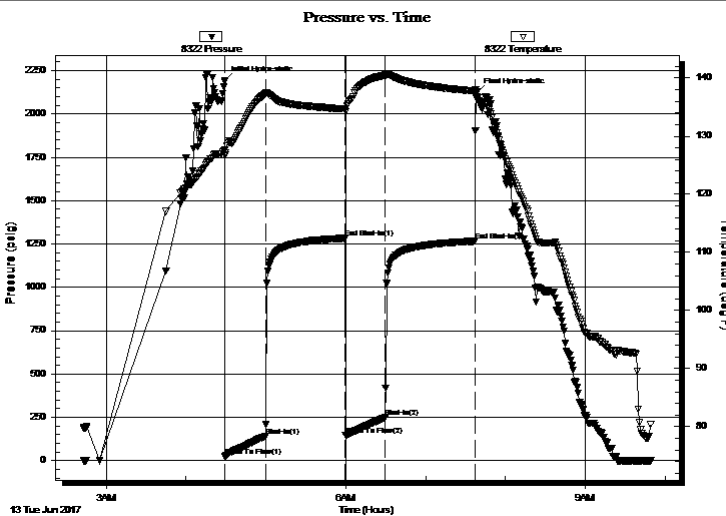
End Time: 09:49:40

Time On Btm: 2017.06.13 @ 04:29:10

Time Off Btm: 2017.06.13 @ 07:38:30

TEST COMMENT: 30-IF-S.blow built to B.O.B. (11 inches) @ 13 1/2 mins
60-ISI- Weak s.blow dead @ 11 1/2 mins
30-FF- S.blow built to B.O.B (11 inches) @ 22 mins
60-FSI-No blow

PRESSURE SUMMARY



| Time (Min.) | Pressure (psig) | Temp (deg F) | Annotation |
|-------------|-----------------|--------------|----------------------|
| 0 | 2192.15 | 127.61 | Initial Hydro-static |
| 1 | 22.54 | 126.73 | Open To Flow (1) |
| 31 | 140.94 | 137.33 | Shut-In(1) |
| 91 | 1282.76 | 134.68 | End Shut-In(1) |
| 91 | 144.89 | 134.24 | Open To Flow (2) |
| 121 | 248.20 | 140.42 | Shut-In(2) |
| 188 | 1266.19 | 137.76 | End Shut-In(2) |
| 190 | 2125.84 | 136.39 | Final Hydro-static |

Recovery

| Length (ft) | Description | Volume (bbl) |
|-------------|----------------|--------------|
| 317.00 | MCW 34%M, 66%W | 4.45 |
| 191.00 | MW 8%M, 92%W | 2.68 |
| | | |
| | | |
| | | |

Gas Rates

| | Choke (inches) | Pressure (psig) | Gas Rate (Mcf/d) |
|--|----------------|-----------------|------------------|
| | | | |

* Recovery from multiple tests

Serial #: 8322

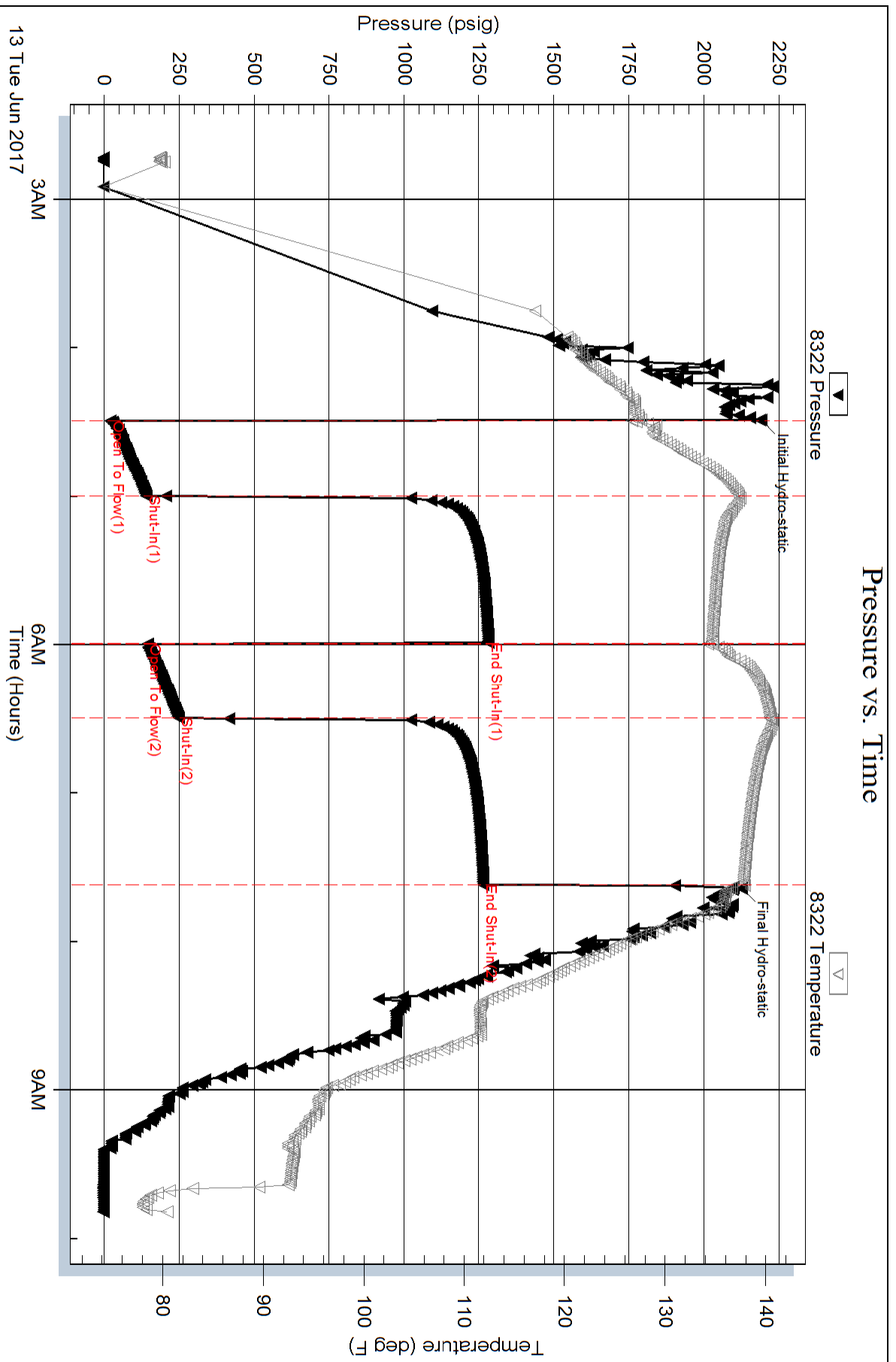
Inside

Culbreath Oil & Gas Co Inc

Dewey Trust#2-3

DST Test Number: 2

Pressure vs. Time



Serial #: 8734

Outside Culbreath Oil & Gas Co Inc

Dewey Trust#2-3

DST Test Number: 2

