



TRILOBITE TESTING, INC.

DRILL STEM TEST REPORT

Meridian Energy Inc.
 1475 Ward Dr.
 Franktown, CO 80116
 ATTN: Maxwell LaFon

25-9S-19W Rooks, KS

Parsons #1

Job Ticket: 63185 **DST#: 1**
 Test Start: 2017.04.30 @ 01:57:02

GENERAL INFORMATION:

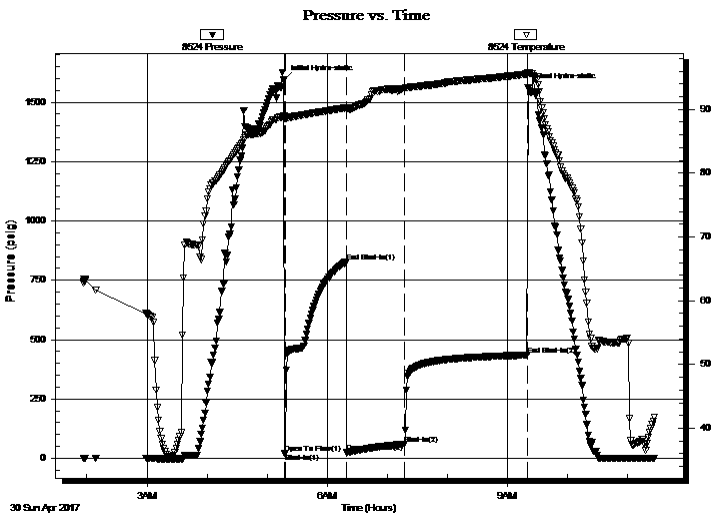
Formation: **Toronto- LKC "C"**
 Deviated: No Whipstock: ft (KB)
 Time Tool Opened: 05:17:08
 Time Test Ended: 11:27:37
 Interval: **3345.00 ft (KB) To 3440.00 ft (KB) (TVD)**
 Total Depth: 3440.00 ft (KB) (TVD)
 Hole Diameter: 7.88 inches Hole Condition: Fair
 Test Type: Conventional Bottom Hole (Initial)
 Tester: Brannan Lonsdale
 Unit No: 73
 Reference Elevations: 2202.00 ft (KB)
 2197.00 ft (CF)
 KB to GR/CF: 5.00 ft

Serial #: 8524 Outside

Press@RunDepth: 60.29 psig @ 3372.00 ft (KB) Capacity: 8000.00 psig
 Start Date: 2017.04.30 End Date: 2017.04.30 Last Calib.: 2017.04.30
 Start Time: 01:57:03 End Time: 11:27:37 Time On Btm: 2017.04.30 @ 05:16:53
 Time Off Btm: 2017.04.30 @ 09:20:23

TEST COMMENT: 002- IF- .5" blow
 060- IS- No blow
 060- FF- Slowly built to 9"
 120- FS- No blow

PRESSURE SUMMARY



Time (Min.)	Pressure (psig)	Temp (deg F)	Annotation
0	1593.65	88.94	Initial Hydro-static
1	21.28	88.52	Open To Flow (1)
2	22.45	88.54	Shut-In(1)
62	826.91	90.25	End Shut-In(1)
63	23.75	90.03	Open To Flow (2)
120	60.29	93.32	Shut-In(2)
243	434.34	95.56	End Shut-In(2)
244	1559.59	95.80	Final Hydro-static

Recovery

Length (ft)	Description	Volume (bbl)
95.00	WM, 10%W 90%M	1.35

Gas Rates

Choke (inches)	Pressure (psig)	Gas Rate (Mcf/d)



TRILOBITE
TESTING, INC.

DRILL STEM TEST REPORT

Meridian Energy Inc.

25-9S-19W Rooks, KS

1475 Ward Dr.
Franktown, CO 80116

Parsons #1

Job Ticket: 63185

DST#: 1

ATTN: Maxwell LaFon

Test Start: 2017.04.30 @ 01:57:02

GENERAL INFORMATION:

Formation: **Toronto- LKC "C"**

Deviated: No Whipstock: ft (KB)

Time Tool Opened: 05:17:08

Time Test Ended: 11:27:37

Test Type: Conventional Bottom Hole (Initial)

Tester: Brannan Lonsdale

Unit No: 73

Interval: 3345.00 ft (KB) To 3440.00 ft (KB) (TVD)

Reference Elevations: 2202.00 ft (KB)

Total Depth: 3440.00 ft (KB) (TVD)

2197.00 ft (CF)

Hole Diameter: 7.88 inches Hole Condition: Fair

KB to GR/CF: 5.00 ft

Serial #: 6838 Inside

Press@RunDepth: psig @ 3372.00 ft (KB)

Capacity: 8000.00 psig

Start Date: 2017.04.30 End Date: 2017.04.30

Last Calib.: 2017.04.30

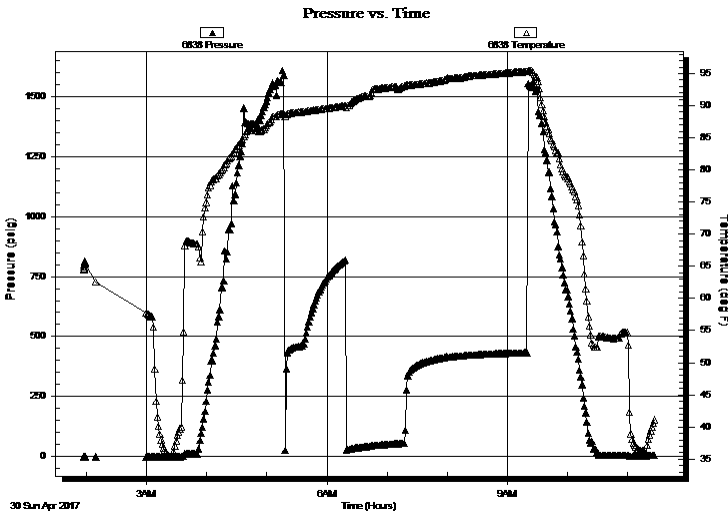
Start Time: 01:57:18 End Time: 11:27:52

Time On Btm:

Time Off Btm:

TEST COMMENT: 002- IF- .5" blow
060- IS- No blow
060- FF- Slowly built to 9"
120- FS- No blow

PRESSURE SUMMARY



Time (Min.)	Pressure (psig)	Temp (deg F)	Annotation

Recovery

Length (ft)	Description	Volume (bbl)
95.00	WM, 10%W 90%M	1.35

Gas Rates

	Choke (inches)	Pressure (psig)	Gas Rate (Mcf/d)



**TRILOBITE
TESTING, INC.**

DRILL STEM TEST REPORT

FLUID SUMMARY

Meridian Energy Inc.

25-9S-19W Rooks, KS

1475 Ward Dr.
Franktown, CO 80116

Parsons #1

Job Ticket: 63185

DST#: 1

ATTN: Maxwell LaFon

Test Start: 2017.04.30 @ 01:57:02

Mud and Cushion Information

Mud Type: Gel Chem

Cushion Type:

Oil API:

deg API

Mud Weight: 9.00 lb/gal

Cushion Length:

ft

Water Salinity:

26000 ppm

Viscosity: 67.00 sec/qt

Cushion Volume:

bbbl

Water Loss: 5.60 in³

Gas Cushion Type:

Resistivity: ohm.m

Gas Cushion Pressure:

psig

Salinity: 4000.00 ppm

Filter Cake: inches

Recovery Information

Recovery Table

Length ft	Description	Volume bbl
95.00	WM, 10%W 90%M	1.347

Total Length: 95.00 ft Total Volume: 1.347 bbl

Num Fluid Samples: 0

Num Gas Bombs: 0

Serial #:

Laboratory Name:

Laboratory Location:

Recovery Comments: Sampler: 2000mL W @ 100PSI

RW: .40@44deg

Pressure vs. Time

