



DRILL STEM TEST REPORT

Prepared For: **Younger Energy Company**

9415 E. Harry Suite 403
Wichita.Kansas 67207-5083

ATTN: Keith Reavis

Drack #3

9-22s-13wStafford

Start Date: 2017.06.14 @ 14:22:00

End Date: 2017.06.14 @ 00:00:00

Job Ticket #: 01173 DST #: 2

Eagle Testers
1309 Patton Road Great Bend, Kansas 67530
620-791-7394

Printed: 2017.06.14 @ 19:12:44



DRILL STEM TEST REPORT

Younger Energy Company

9-22s-13wStafford

9415 E. Harry Suite 403
Wichita, Kansas 67207-5083

Drack #3

Job Ticket: 01173

DST#: 2

ATTN: Keith Reavis

Test Start: 2017.06.14 @ 14:22:00

GENERAL INFORMATION:

Formation: **Simpson & Arbuckle**

Deviated: No Whipstock: ft (KB)

Time Tool Opened: 15:42:00

Time Test Ended: 00:00:00

Test Type: Conventional Bottom Hole (Initial)

Tester: Gene Budig

Unit No: 1

Interval: 3736.00 ft (KB) To 3778.00 ft (KB) (TVD)

Reference Elevations: 1898.00 ft (KB)

Total Depth: 3778.00 ft (KB) (TVD)

1890.00 ft (CF)

Hole Diameter: 7.88 inches Hole Condition: Fair

KB to GR/CF: 8.00 ft

Serial #: 91716 Outside

Press@RunDepth: 1057.55 psig @ 3773.00 ft (KB)

Capacity: 5000.00 psig

Start Date: 2017.06.14

End Date: 2017.06.14

Last Calib.: 2017.06.14

Start Time: 14:33:30

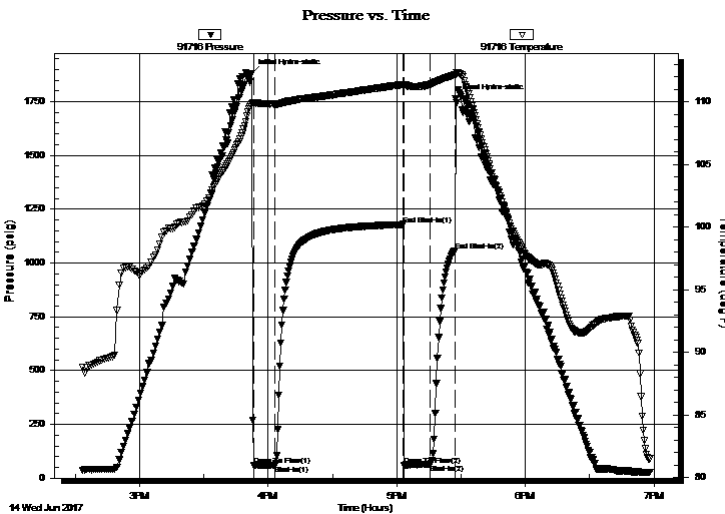
End Time: 18:58:00

Time On Btm: 2017.06.14 @ 15:52:30

Time Off Btm: 2017.06.14 @ 17:27:30

TEST COMMENT: 1st Opening 10 Minutes Very weak blow through out
1st Shut-In 60 Minutes no blow back
2nd Opening 13 Minutes no blow flushed tool no help
2nd Shut-In 10 Minutes No blow back

PRESSURE SUMMARY



Time (Min.)	Pressure (psig)	Temp (deg F)	Annotation
0	1879.68	109.85	Initial Hydro-static
1	59.06	109.92	Open To Flow (1)
11	61.25	109.80	Shut-In(1)
71	1178.97	111.38	End Shut-In(1)
71	58.03	111.38	Open To Flow (2)
83	64.88	111.37	Shut-In(2)
95	1057.55	112.13	End Shut-In(2)
95	1763.61	112.16	Final Hydro-static

Recovery

Length (ft)	Description	Volume (bbl)
15.00	Drilling Mud	0.21

Gas Rates

	Choke (inches)	Pressure (psig)	Gas Rate (Mcf/d)



DRILL STEM TEST REPORT

TOOL DIAGRAM

Younger Energy Company

9-22s-13wStafford

9415 E. Harry Suite 403
Wichita, Kansas 67207-5083

Drack #3

Job Ticket: 01173

DST#: 2

ATTN: Keith Reavis

Test Start: 2017.06.14 @ 14:22:00

Tool Information

Drill Pipe:	Length: 3713.00 ft	Diameter: 3.80 inches	Volume: 52.08 bbl	Tool Weight: 2000.00 lb
Heavy Wt. Pipe:	Length: 0.00 ft	Diameter: 0.00 inches	Volume: 0.00 bbl	Weight set on Packer: 20000.00 lb
Drill Collar:	Length: 0.00 ft	Diameter: 0.00 inches	Volume: 0.00 bbl	Weight to Pull Loose: 65000.00 lb
			<u>Total Volume: 52.08 bbl</u>	Tool Chased 0.00 ft
Drill Pipe Above KB:	4.00 ft			String Weight: Initial 60000.00 lb
Depth to Top Packer:	3736.00 ft			Final 60000.00 lb
Depth to Bottom Packer:	ft			
Interval between Packers:	42.00 ft			
Tool Length:	69.00 ft			
Number of Packers:	2	Diameter: 6.75 inches		

Tool Comments:

Tool Description	Length (ft)	Serial No.	Position	Depth (ft)	Accum. Lengths
------------------	-------------	------------	----------	------------	----------------

Shut In Tool	5.00			3714.00	
Hydraulic tool	5.00			3719.00	
Jars	5.00			3724.00	
Safety Joint	2.00			3726.00	
Top Packer	5.00			3731.00	
Packer	5.00			3736.00	27.00 Bottom Of Top Packer
Anchor	37.00			3773.00	
Recorder	0.00	9119	Inside	3773.00	
Recorder	0.00	91716	Outside	3773.00	
Bullnose	5.00			3778.00	42.00 Anchor Tool
Total Tool Length:	69.00				



DRILL STEM TEST REPORT

FLUID SUMMARY

Younger Energy Company

9-22s-13wStafford

9415 E. Harry Suite 403
Wichita, Kansas 67207-5083

Drack #3

Job Ticket: 01173

DST#: 2

ATTN: Keith Reavis

Test Start: 2017.06.14 @ 14:22:00

Mud and Cushion Information

Mud Type: Gel Chem
Mud Weight: 9.00 lb/gal
Viscosity: 48.00 sec/qt
Water Loss: 7.98 in³
Resistivity: ohm.m
Salinity: 4000.00 ppm
Filter Cake: 1.00 inches

Cushion Type:
Cushion Length: ft
Cushion Volume: bbl
Gas Cushion Type:
Gas Cushion Pressure: psig

Oil API: deg API
Water Salinity: ppm

Recovery Information

Recovery Table

Length ft	Description	Volume bbl
15.00	Drilling Mud	0.210

Total Length: 15.00 ft Total Volume: 0.210 bbl

Num Fluid Samples: 0 Num Gas Bombs: 0 Serial #:

Laboratory Name: Laboratory Location:

Recovery Comments:

Pressure vs. Time

