



TRILOBITE TESTING, INC.

DRILL STEM TEST REPORT

Russell Oil Inc
 P.O. Box 8050
 Edmond, Ok 73083
 ATTN: Kitt Noah

29-11s-32w Logan, Ks
Bowie 29-1
 Job Ticket: 63871 **DST#: 7**
 Test Start: 2017.08.08 @ 20:15:04

GENERAL INFORMATION:

Formation: **Johnson zn**
 Deviated: No Whipstock: ft (KB)
 Test Type: Conventional Bottom Hole (Reset)
 Time Tool Opened: 22:22:04
 Tester: Brandon Turley
 Time Test Ended: 04:01:34
 Unit No: 79
 Interval: **4596.00 ft (KB) To 4644.00 ft (KB) (TVD)**
 Reference Elevations: 3078.00 ft (KB)
 Total Depth: 4644.00 ft (KB) (TVD)
 3073.00 ft (CF)
 Hole Diameter: 7.88 inches Hole Condition: Good
 KB to GR/CF: 5.00 ft

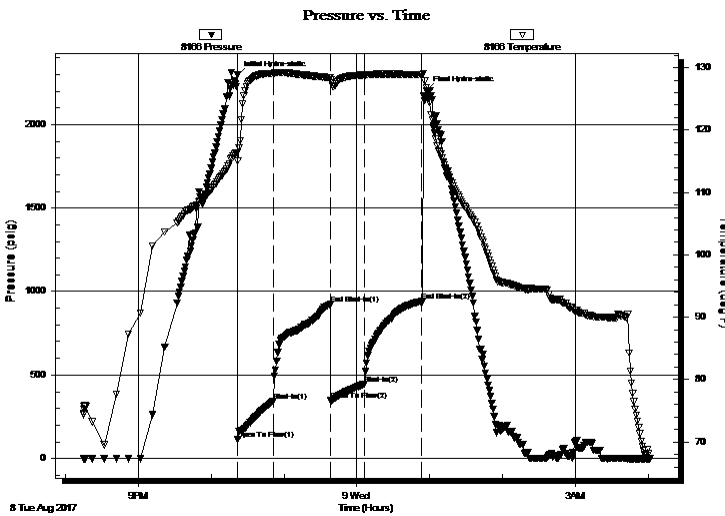
Serial #: 8166

Outside

Press@RunDepth: 444.24 psig @ 4597.00 ft (KB) Capacity: 8000.00 psig
 Start Date: 2017.08.08 End Date: 2017.08.09 Last Calib.: 2017.08.09
 Start Time: 20:15:09 End Time: 04:01:33 Time On Btm: 2017.08.08 @ 22:21:34
 Time Off Btm: 2017.08.09 @ 00:57:04

TEST COMMENT: IF: BOB in 2 min.
 IS: Surface blow BOB in 18 min.
 FF: BOB in 5 min.
 FS: BOB in 30 min.

PRESSURE SUMMARY



Time (Min.)	Pressure (psig)	Temp (deg F)	Annotation
0	2295.74	116.33	Initial Hydro-static
1	113.13	115.07	Open To Flow (1)
30	342.76	129.10	Shut-In(1)
77	922.47	128.39	End Shut-In(1)
77	347.60	128.02	Open To Flow (2)
105	444.24	128.81	Shut-In(2)
152	940.97	128.85	End Shut-In(2)
156	2200.55	126.76	Final Hydro-static

Recovery

Length (ft)	Description	Volume (bbl)
248.00	gocm 20%g 10%o 70%m	2.39
908.00	go 30%g 70%o	12.74
0.00	952 Weak GIP	0.00

* Recovery from multiple tests

Gas Rates

Choke (inches)	Pressure (psig)	Gas Rate (Mcf/d)



**TRILOBITE
TESTING, INC.**

DRILL STEM TEST REPORT

Russell Oil Inc
P.O. Box 8050
Edmond, Ok 73083
ATTN: Kitt Noah

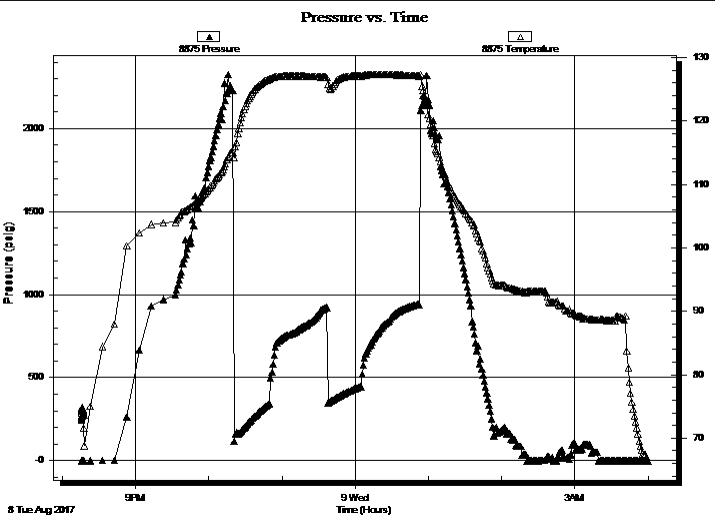
29-11s-32w Logan, Ks
Bowie 29-1
Job Ticket: 63871 **DST#: 7**
Test Start: 2017.08.08 @ 20:15:04

GENERAL INFORMATION:

Formation: **Johnson zn**
Deviated: No Whipstock: ft (KB) Test Type: Conventional Bottom Hole (Reset)
Time Tool Opened: 22:22:04 Tester: Brandon Turley
Time Test Ended: 04:01:34 Unit No: 79
Interval: 4596.00 ft (KB) To 4644.00 ft (KB) (TVD) Reference Elevations: 3078.00 ft (KB)
Total Depth: 4644.00 ft (KB) (TVD) 3073.00 ft (CF)
Hole Diameter: 7.88 inches Hole Condition: Good KB to GR/CF: 5.00 ft

Serial #: 8875 Inside
Press@RunDepth: psig @ 4597.00 ft (KB) Capacity: 8000.00 psig
Start Date: 2017.08.08 End Date: 2017.08.09 Last Calib.: 2017.08.09
Start Time: 20:15:44 End Time: 04:00:13 Time On Btm:
Time Off Btm:

TEST COMMENT: IF: BOB in 2 min.
IS: Surface blow BOB in 18 min.
FF: BOB in 5 min.
FS: BOB in 30 min.



PRESSURE SUMMARY

Time (Min.)	Pressure (psig)	Temp (deg F)	Annotation

Recovery

Length (ft)	Description	Volume (bbl)
248.00	gocm 20%g 10%o 70%m	2.39
908.00	go 30%g 70%o	12.74
0.00	952 Weak GIP	0.00

Gas Rates

Choke (inches)	Pressure (psig)	Gas Rate (Mcf/d)

* Recovery from multiple tests



**TRILOBITE
TESTING, INC.**

DRILL STEM TEST REPORT

FLUID SUMMARY

Russell Oil Inc

29-11s-32w Logan, Ks

P.O. Box 8050
Edmond, Ok 73083

Bowie 29-1

Job Ticket: 63871

DST#: 7

ATTN: Kitt Noah

Test Start: 2017.08.08 @ 20:15:04

Mud and Cushion Information

Mud Type: Gel Chem

Cushion Type:

Oil API:

27 deg API

Mud Weight: 9.00 lb/gal

Cushion Length:

ft

Water Salinity:

0 ppm

Viscosity: 69.00 sec/qt

Cushion Volume:

bbbl

Water Loss: 7.20 in³

Gas Cushion Type:

Resistivity: 0.00 ohm.m

Gas Cushion Pressure:

psig

Salinity: 3500.00 ppm

Filter Cake: 1.00 inches

Recovery Information

Recovery Table

Length ft	Description	Volume bbl
248.00	gocm 20%g 10%o 70%m	2.386
908.00	go 30%g 70%o	12.737
0.00	952 Weak GIP	0.000

Total Length: 1156.00 ft Total Volume: 15.123 bbl

Num Fluid Samples: 0

Num Gas Bombs: 0

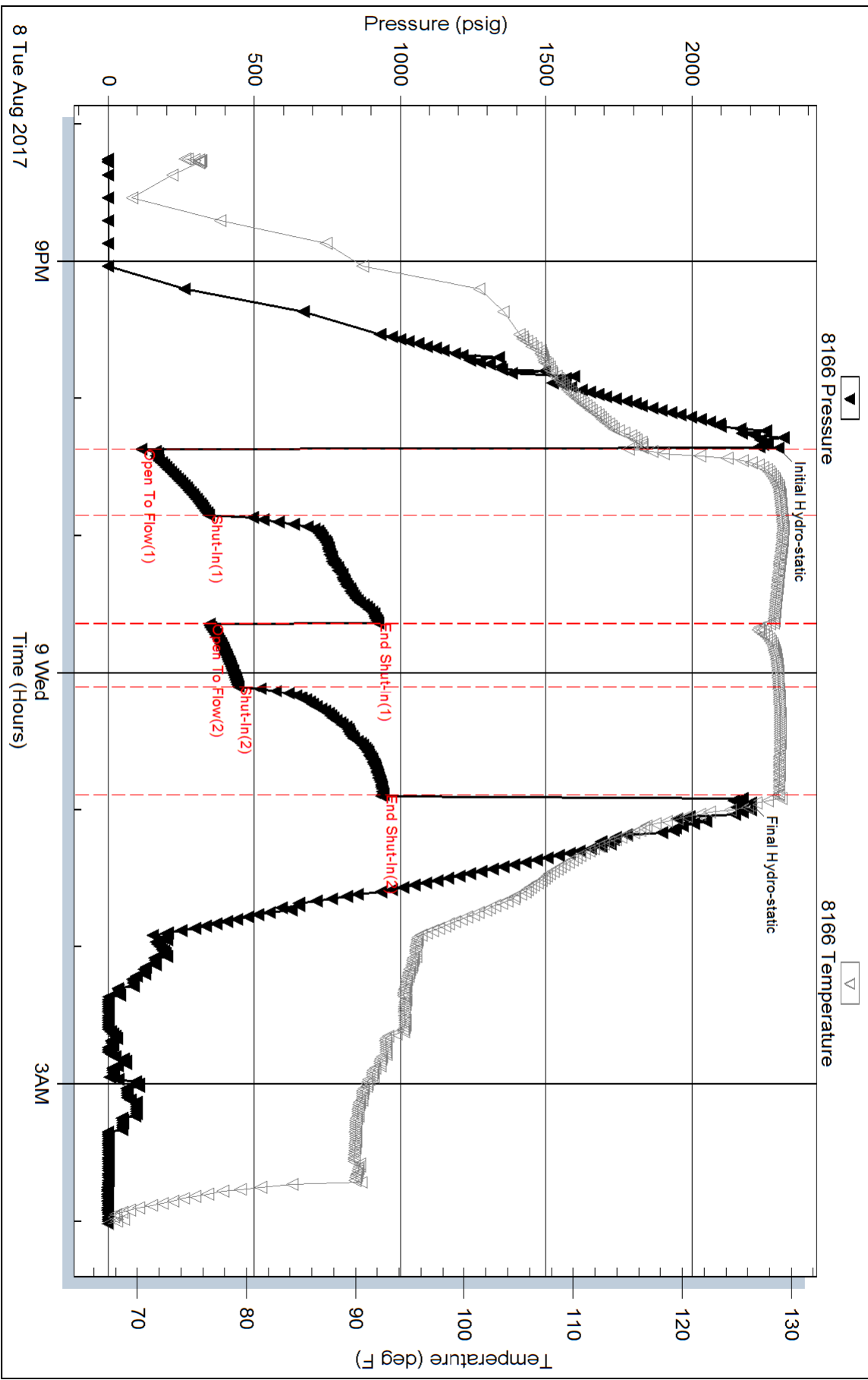
Serial #:

Laboratory Name:

Laboratory Location:

Recovery Comments: 28@70=27

Pressure vs. Time



Serial #: 8875

Inside

Russell Oil Inc

Bowie 29-1

DST Test Number: 7

