



TRILOBITE TESTING, INC.

DRILL STEM TEST REPORT

Cholla Production LLC
 10390 Bradford Rd Suite 201 Littleton Co 80127
 ATTN: Bill Goff ,Clayton E

18-21s-26w Hodgeman
SRF Farms 1-18
 Job Ticket: 63089 **DST#: 1**
 Test Start: 2017.10.17 @ 05:10:34

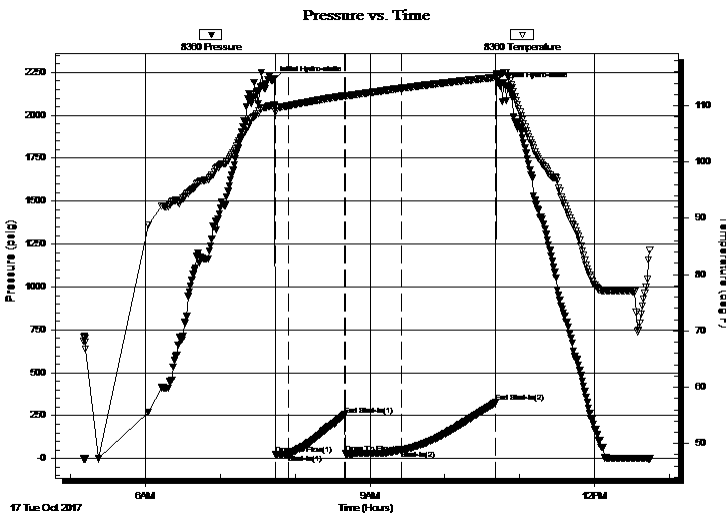
GENERAL INFORMATION:

Formation: **Lower Cher**
 Deviated: No Whipstock: ft (KB)
 Time Tool Opened: 07:44:14
 Time Test Ended: 12:44:43
 Interval: **4450.00 ft (KB) To 4525.00 ft (KB) (TVD)**
 Total Depth: 4525.00 ft (KB) (TVD)
 Hole Diameter: 7.85 inches Hole Condition: Fair
 Test Type: Conventional Bottom Hole (Initial)
 Tester: Ray Schwager
 Unit No: 77
 Reference Elevations: 2539.00 ft (KB)
 2531.00 ft (CF)
 KB to GR/CF: 8.00 ft

Serial #: 8360 **Inside**
 Press@RunDepth: 49.16 psig @ 4458.00 ft (KB) Capacity: 8000.00 psig
 Start Date: 2017.10.17 End Date: 2017.10.17 Last Calib.: 2017.10.17
 Start Time: 05:10:34 End Time: 12:44:43 Time On Btm: 2017.10.17 @ 07:42:14
 Time Off Btm: 2017.10.17 @ 10:44:13

TEST COMMENT: 10-IFP-surface bl , died in 7 min
 45-ISIP-no bl
 30-FFP-surface bl , died in 20 min
 90-FSIP-no bl

PRESSURE SUMMARY



Time (Min.)	Pressure (psig)	Temp (deg F)	Annotation
0	2204.65	110.05	Initial Hydro-static
2	23.38	108.86	Open To Flow (1)
13	26.87	109.99	Shut-In(1)
58	255.62	111.77	End Shut-In(1)
58	28.59	111.72	Open To Flow (2)
103	49.16	113.09	Shut-In(2)
179	325.85	115.00	End Shut-In(2)
182	2169.30	115.49	Final Hydro-static

Recovery

Length (ft)	Description	Volume (bbl)
5.00	Mud w / show of oil	0.02

Gas Rates

Choke (inches)	Pressure (psig)	Gas Rate (Mcf/d)



**TRILOBITE
TESTING, INC.**

DRILL STEM TEST REPORT

FLUID SUMMARY

Cholla Production LLC

18-21s-26w Hodgeman

10390 Bradford Rd Suite 201 Littleton Co 80127

SRF Farms 1-18

Job Ticket: 63089

DST#: 1

ATTN: Bill Goff ,Clayton E

Test Start: 2017.10.17 @ 05:10:34

Mud and Cushion Information

Mud Type: Gel Chem

Cushion Type:

Oil API:

deg API

Mud Weight: 9.00 lb/gal

Cushion Length:

ft

Water Salinity:

ppm

Viscosity: 52.00 sec/qt

Cushion Volume:

bbbl

Water Loss: 8.75 in³

Gas Cushion Type:

Resistivity: ohm.m

Gas Cushion Pressure:

psig

Salinity: 3200.00 ppm

Filter Cake: 1.00 inches

Recovery Information

Recovery Table

Length ft	Description	Volume bbl
5.00	Mud w / show of oil	0.025

Total Length: 5.00 ft Total Volume: 0.025 bbl

Num Fluid Samples: 0

Num Gas Bombs: 0

Serial #:

Laboratory Name:

Laboratory Location:

Recovery Comments: Sampler Data: 1900 ML mud 100ML Oil PSI 50#

Serial #: 8360

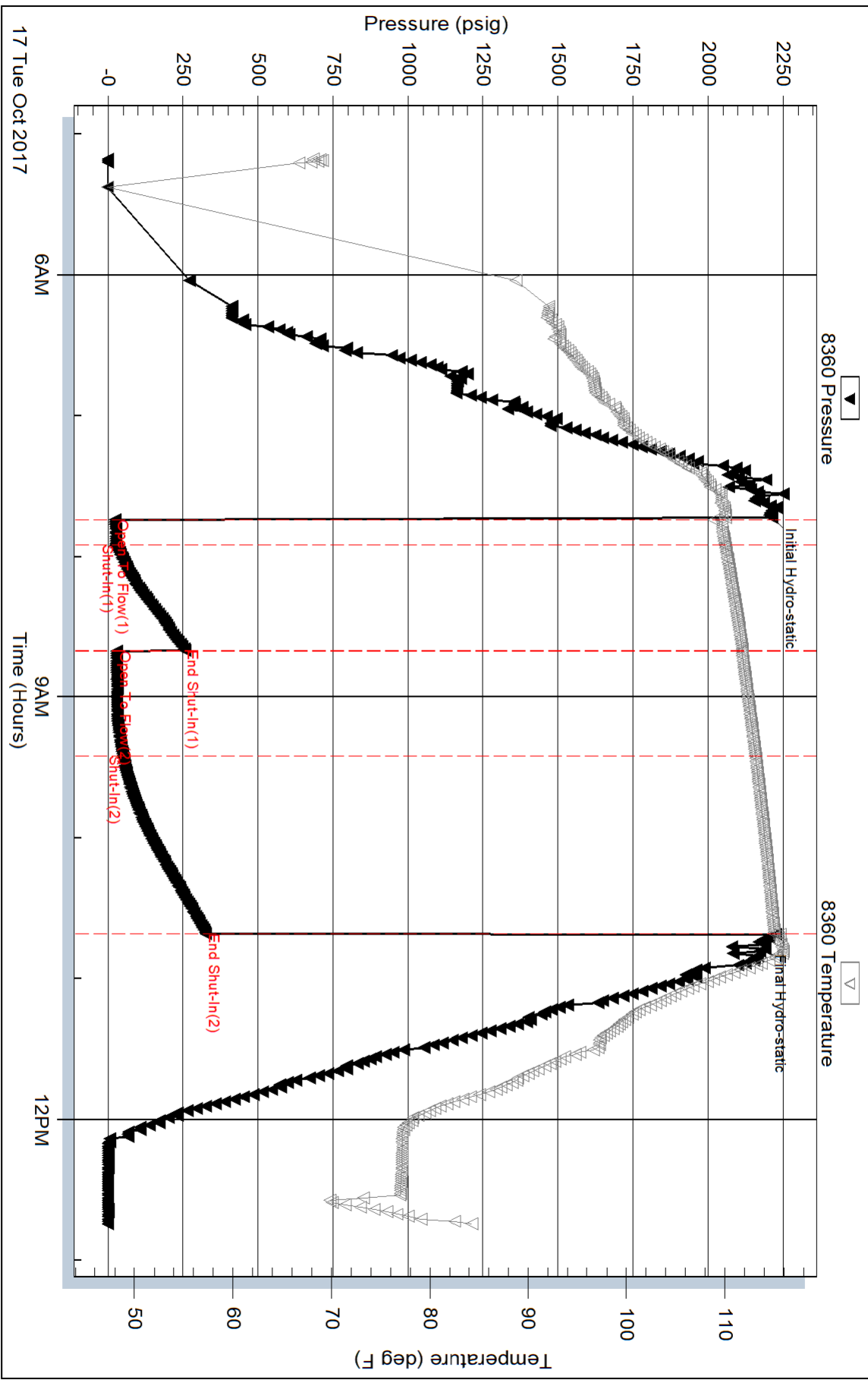
Inside

Cholla Production LLC

SRF Farms 1-18

DST Test Number: 1

Pressure vs. Time



Serial #: 8673

Outside Cholla Production LLC

SRF Farms 1-18

DST Test Number: 1

