



TRILOBITE TESTING, INC.

DRILL STEM TEST REPORT

LaVeta Oil & Gas
 305 N Buffalo
 Stafford, KS 67578
 ATTN: Bruce Reed

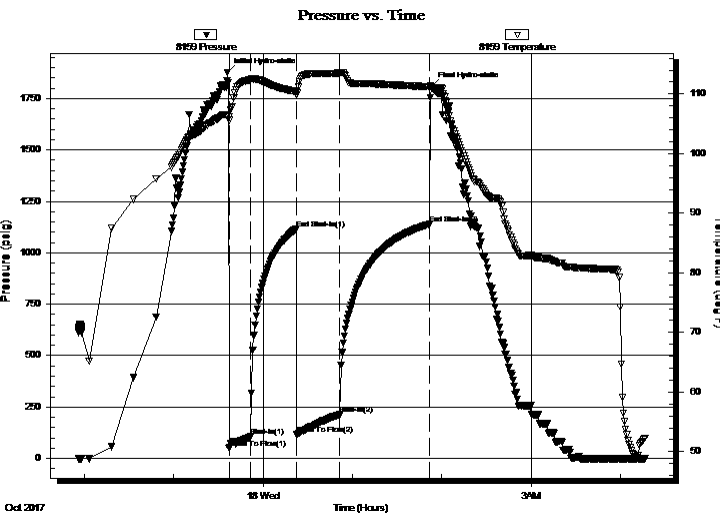
13-22S-12W Stafford
Jan 3
 Job Ticket: 57839 **DST#: 1**
 Test Start: 2017.10.17 @ 21:56:03

GENERAL INFORMATION:

Formation: **Arbuckle**
 Deviated: No Whipstock: ft (KB)
 Test Type: Conventional Bottom Hole (Initial)
 Time Tool Opened: 23:37:03 Tester: Leal Cason
 Time Test Ended: 04:16:48 Unit No: 74
 Interval: **3624.00 ft (KB) To 3656.00 ft (KB) (TVD)** Reference Elevations: 1851.00 ft (KB)
 Total Depth: 3656.00 ft (KB) (TVD) 1841.00 ft (CF)
 Hole Diameter: 7.88 inches Hole Condition: Good KB to GR/CF: 10.00 ft

Serial #: 8159 Inside
 Press@RunDepth: 212.69 psig @ 3625.00 ft (KB) Capacity: 8000.00 psig
 Start Date: 2017.10.17 End Date: 2017.10.18 Last Calib.: 2017.10.18
 Start Time: 21:56:04 End Time: 04:16:48 Time On Btm: 2017.10.17 @ 23:36:03
 Time Off Btm: 2017.10.18 @ 01:52:48

TEST COMMENT: IF: Strong Blow , BOB in 2 minutes
 IS: 2 inch Blow Back
 FF: Strong Blow , BOB in 3 minutes
 FS: No Blow Back



PRESSURE SUMMARY

Time (Min.)	Pressure (psig)	Temp (deg F)	Annotation
0	1876.68	106.45	Initial Hydro-static
1	48.74	105.61	Open To Flow (1)
16	106.58	112.43	Shut-In(1)
46	1115.20	110.41	End Shut-In(1)
47	117.95	109.94	Open To Flow (2)
76	212.69	113.49	Shut-In(2)
136	1138.64	111.23	End Shut-In(2)
137	1808.24	111.17	Final Hydro-static

Recovery

Length (ft)	Description	Volume (bbl)
0.00	1827 GIP	0.00
534.00	GSY Oil 20%G 80%O	7.49

Gas Rates

Choke (inches)	Pressure (psig)	Gas Rate (Mcf/d)



**TRILOBITE
TESTING, INC.**

DRILL STEM TEST REPORT

FLUID SUMMARY

LaVeta Oil & Gas

13-22S-12W Stafford

305 N Buffalo
Stafford, KS 67578

Jan 3

Job Ticket: 57839

DST#: 1

ATTN: Bruce Reed

Test Start: 2017.10.17 @ 21:56:03

Mud and Cushion Information

Mud Type: Gel Chem

Cushion Type:

Oil API:

39.4 deg API

Mud Weight: 10.00 lb/gal

Cushion Length:

ft

Water Salinity:

ppm

Viscosity: 52.00 sec/qt

Cushion Volume:

bbbl

Water Loss: 8.79 in³

Gas Cushion Type:

Resistivity: ohm.m

Gas Cushion Pressure:

psig

Salinity: 4500.00 ppm

Filter Cake: 0.02 inches

Recovery Information

Recovery Table

Length ft	Description	Volume bbl
0.00	1827 GIP	0.000
534.00	GSY Oil 20%G 80%O	7.491

Total Length: 534.00 ft Total Volume: 7.491 bbl

Num Fluid Samples: 0

Num Gas Bombs: 0

Serial #:

Laboratory Name:

Laboratory Location:

Recovery Comments: Gravity w as 38.6 @ 52 degrees

Pressure vs. Time

