

TRILOBITE TESTING, INC

DRILL STEM TEST REPORT

Jolen Operating Co

22-24S-22W Ford

100 N Broadway Ste 2460
Oklahoma City, OK 73102

Sellard 1-22

Job Ticket: 57842

DST#: 1

ATTN: Ken LeBlanc/Dennis P

Test Start: 2017.10.21 @ 20:32:02

GENERAL INFORMATION:

Formation: **Mississippi**

Deviated: No Whipstock: ft (KB)

Time Tool Opened: 23:21:47

Time Test Ended: 04:37:17

Test Type: Conventional Bottom Hole (Initial)

Tester: Leal Cason

Unit No: 74

Interval: **5300.00 ft (KB) To 5330.00 ft (KB) (TVD)**

Reference Elevations: 2504.00 ft (KB)

Total Depth: 5330.00 ft (KB) (TVD)

2492.00 ft (CF)

Hole Diameter: 7.88 inches Hole Condition: Good

KB to GR/CF: 12.00 ft

Serial #: 6798

Press@RunDepth: 37.81 psig @ ft (KB)

Capacity: 8000.00 psig

Start Date: 2017.10.21

End Date: 2017.10.22

Last Calib.: 2017.10.22

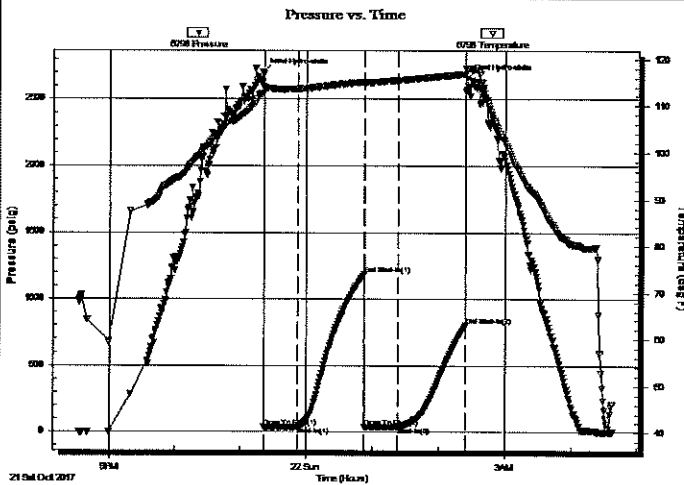
Start Time: 20:32:03

End Time: 04:37:17

Time On Btm: 2017.10.21 @ 23:20:32

Time Off Btm: 2017.10.22 @ 02:26:02

TEST COMMENT: IF: Weak 2 inch Blow, Died Off to 1 inch
IS: No Blow Back
FF: Weak Surface Blow
FSI: No Blow Back



PRESSURE SUMMARY

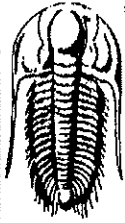
Time (Min.)	Pressure (psig)	Temp (deg F)	Annotation
0	2697.59	112.63	Initial Hydro-static
2	35.90	113.62	Open To Flow (1)
32	37.38	113.58	Shut-In(1)
93	1186.02	115.12	End Shut-In(1)
93	36.49	114.92	Open To Flow (2)
123	37.81	115.49	Shut-In(2)
184	798.95	116.77	End Shut-In(2)
186	2656.32	117.93	Final Hydro-static

Recovery

Length (ft)	Description	Volume (bbl)
20.00	Mud	0.28

Gas Rates

	Choke (inches)	Pressure (psig)	Gas Rate (Mcf/d)



TRILOBITE TESTING, INC.

DRILL STEM TEST REPORT

Jolen Operating Co

100 N Broadway Ste 2460
Oklahoma City, OK 73102

ATTN: Ken LeBlanc/Dennis P

22-24S-22W Ford

Sellard 1-22

Job Ticket: 57842

DST#: 1

Test Start: 2017.10.21 @ 20:32:02

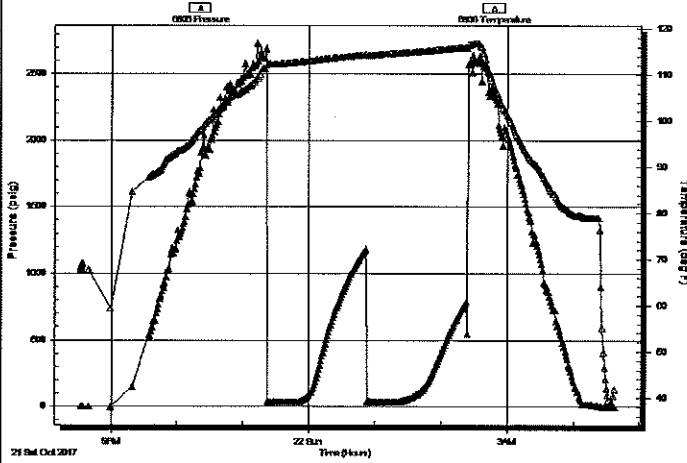
GENERAL INFORMATION:

Formation: Mississippi		Test Type: Conventional Bottom Hole (Initial)
Deviated: No Whipstock: ft (KB)		Tester: Leal Cason
Time Tool Opened: 23:21:47		Unit No: 74
Time Test Ended: 04:37:17		
Interval: 5300.00 ft (KB) To 5330.00 ft (KB) (TVD)		Reference Elevations: 2504.00 ft (KB)
Total Depth: 5330.00 ft (KB) (TVD)		2492.00 ft (CF)
Hole Diameter: 7.88 inches Hole Condition: Good		KB to GR/CF: 12.00 ft

Serial #: 6806	Outside				
Press@RunDepth:	psig @	5301.00 ft (KB)	Capacity:	8000.00 psig	
Start Date:	2017.10.21	End Date:	2017.10.22	Last Calib.:	2017.10.22
Start Time:	20:32:03	End Time:	04:37:17	Time On Btm:	
				Time Off Btm:	

TEST COMMENT: IF: Weak 2 inch Blow, Died Off to 1 inch
IS: No Blow Back
FF: Weak Surface Blow
FSI: No Blow Back

Pressure vs. Time



PRESSURE SUMMARY

Time (Min.)	Pressure (psig)	Temp (deg F)	Annotation

Recovery

Length (ft)	Description	Volume (bbl)
20.00	Mud	0.28

Gas Rates

Choke (inches)	Pressure (psig)	Gas Rate (Mcf/d)



TRILOBITE
TESTING, INC

DRILL STEM TEST REPORT

TOOL DIAGRAM

Jolen Operating Co
100 N Broadway Ste 2460
Oklahoma City, OK 73102
ATTN: Ken LeBlanc/Dennis P

22-24S-22W Ford
Sellard 1-22
Job Ticket: 57842 **DST#: 1**
Test Start: 2017.10.21 @ 20:32:02

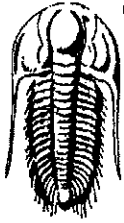
Tool Information

Drill Pipe:	Length: 5294.00 ft	Diameter: 3.80 inches	Volume: 74.26 bbl	Tool Weight: 2100.00 lb
Heavy Wt. Pipe:	Length: 0.00 ft	Diameter: 0.00 inches	Volume: 0.00 bbl	Weight set on Packer: 25000.00 lb
Drill Collar:	Length: 0.00 ft	Diameter: 0.00 inches	Volume: 0.00 bbl	Weight to Pull Loose: 110000.0 lb
			<u>Total Volume: 74.26 bbl</u>	Tool Chased 9.00 ft
Drill Pipe Above KB:	20.00 ft			String Weight: Initial 76000.00 lb
Depth to Top Packer:	5300.00 ft			Final 76000.00 lb
Depth to Bottom Packer:	ft			
Interval between Packers:	30.00 ft			
Tool Length:	56.00 ft			
Number of Packers:	2	Diameter: 6.75 inches		

Tool Comments:

Tool Description	Length (ft)	Serial No.	Position	Depth (ft)	Accum. Lengths
Shut In Tool	5.00			5279.00	
Hydraulic tool	5.00			5284.00	
Jars	5.00			5289.00	
Safety Joint	2.00			5291.00	
Packer	5.00			5296.00	26.00 Bottom Of Top Packer
Packer	4.00			5300.00	
Stubb	1.00			5301.00	
Recorder	0.00	8159	Inside	5301.00	
Recorder	0.00	6806	Outside	5301.00	
Perforations	26.00			5327.00	
Bullnose	3.00			5330.00	30.00 Bottom Packers & Anchor

Total Tool Length: 56.00



**TRILOBITE
TESTING, INC.**

DRILL STEM TEST REPORT

FLUID SUMMARY

Jolen Operating Co

22-24S-22W Ford

100 N Broadway Ste 2460
Oklahoma City, OK 73102

Sellard 1-22

Job Ticket: 57842

DST#: 1

ATTN: Ken LeBlanc/Dennis P

Test Start: 2017.10.21 @ 20:32:02

Mud and Cushion Information

Mud Type: Gel Chem

Cushion Type:

Oil API:

deg API

Mud Weight: 9.00 lb/gal

Cushion Length:

ft

Water Salinity:

ppm

Viscosity: 64.00 sec/qt

Cushion Volume:

bbf

Water Loss: 6.40 in³

Gas Cushion Type:

Resistivity: ohm.m

Gas Cushion Pressure:

psig

Salinity: 5000.00 ppm

Filter Cake: 0.02 inches

Recovery Information

Recovery Table

Length ft	Description	Volume bbf
20.00	Mud	0.281

Total Length: 20.00 ft

Total Volume: 0.281 bbf

Num Fluid Samples: 0

Num Gas Bombs: 0

Serial #:

Laboratory Name:

Laboratory Location:

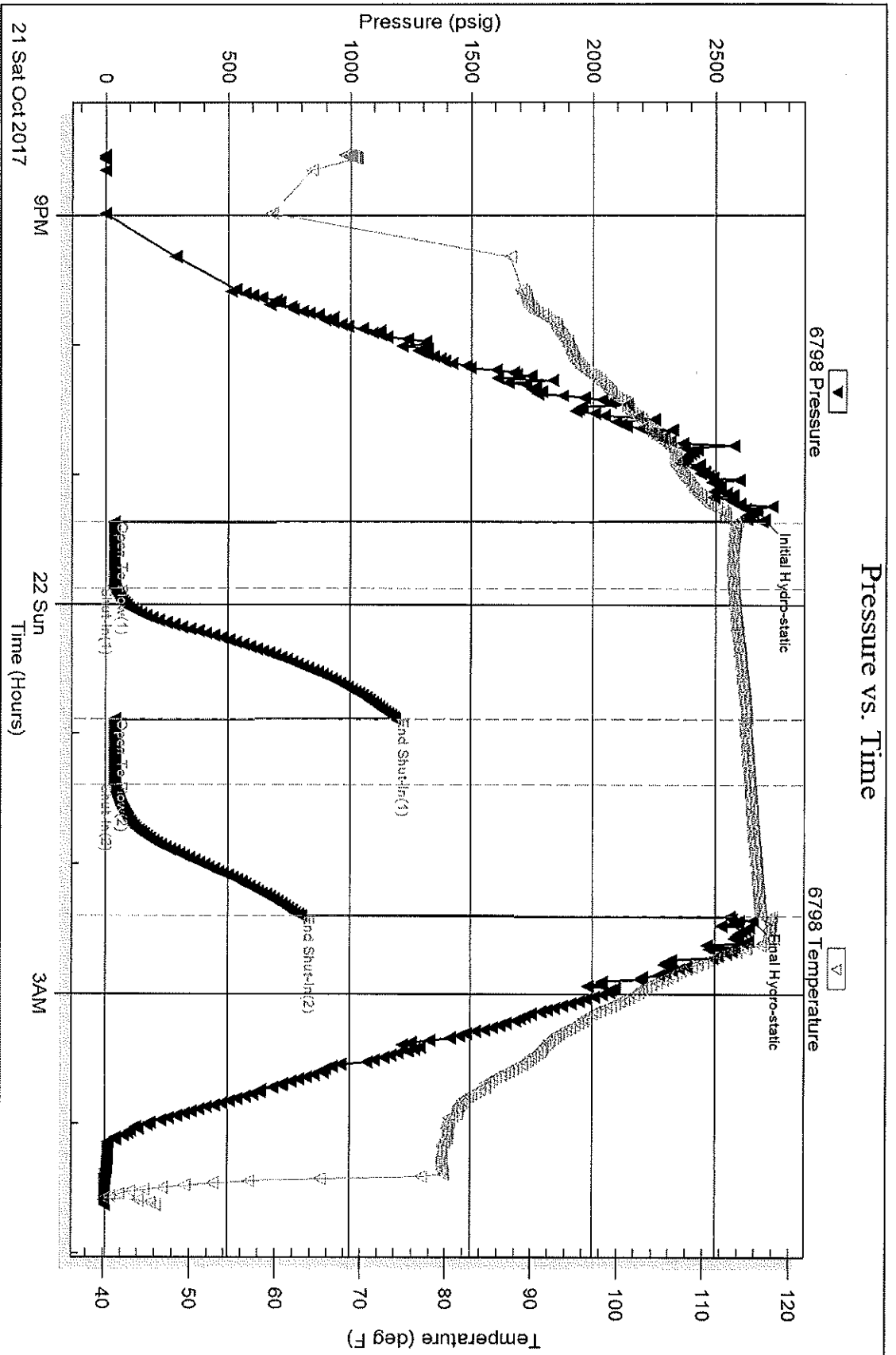
Recovery Comments:

Serial #: 6798

Jolen Operating Co

Sellard 1-22

DST Test Number: 1



Tribble Testing, Inc

Ref. No: 57842

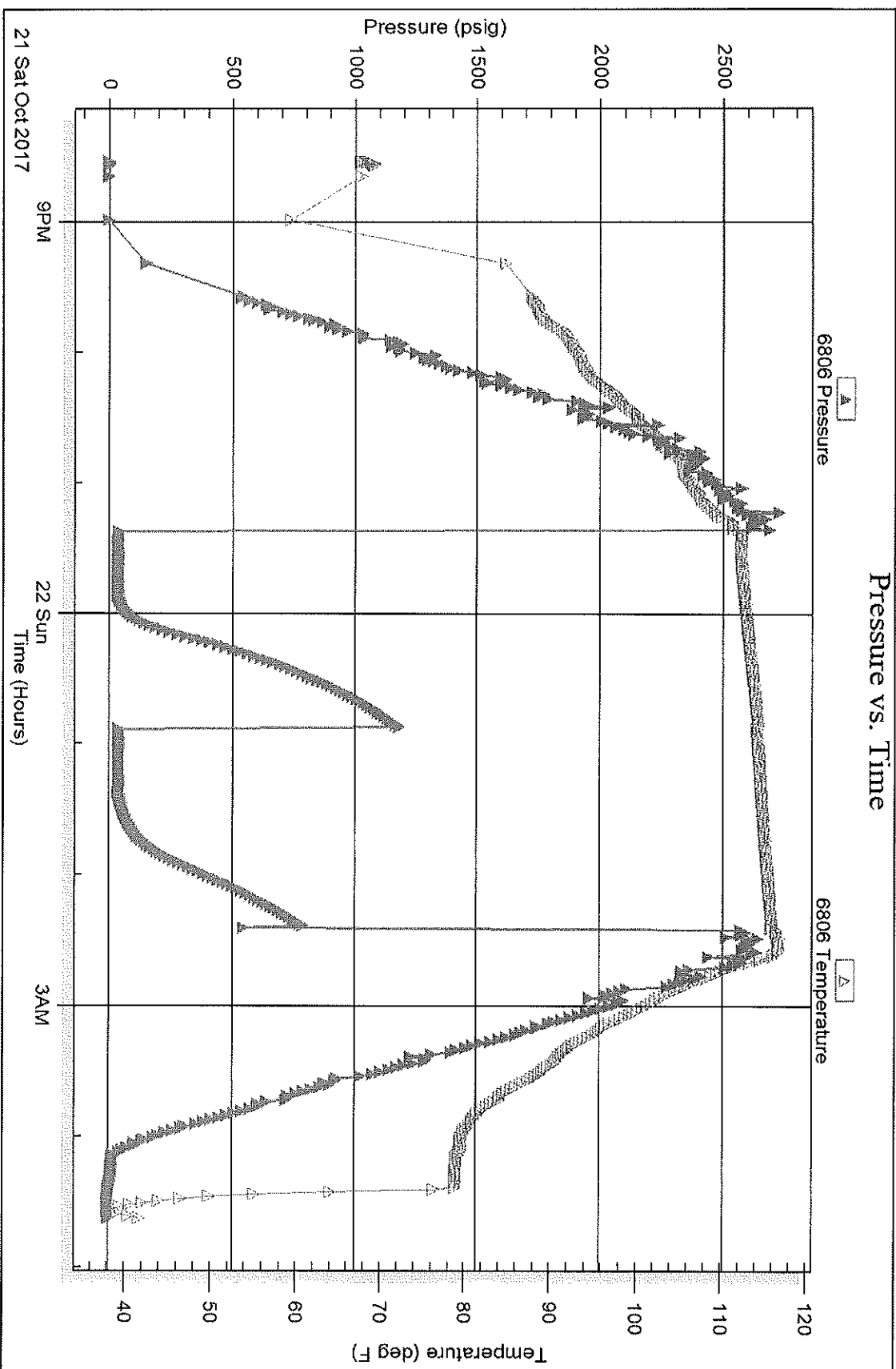
Printed: 2017.10.22 @ 07:46:53

Serial #: 6806

Outside Jolen Operating Co

Sellard 1-22

DST Test Number: 1



Tribolite Testing, Inc

Ref. No: 57842

Printed: 2017.10.22 @ 07:46:53