



**TRILOBITE
TESTING, INC.**

DRILL STEM TEST REPORT

Pollok Energy
501 N 4th
Purcell, OK 73080
ATTN: David Hickman

17-28S-8W Kingman
1-17 Bock
Job Ticket: 63626 **DST#: 3**
Test Start: 2017.11.07 @ 08:53:33

GENERAL INFORMATION:

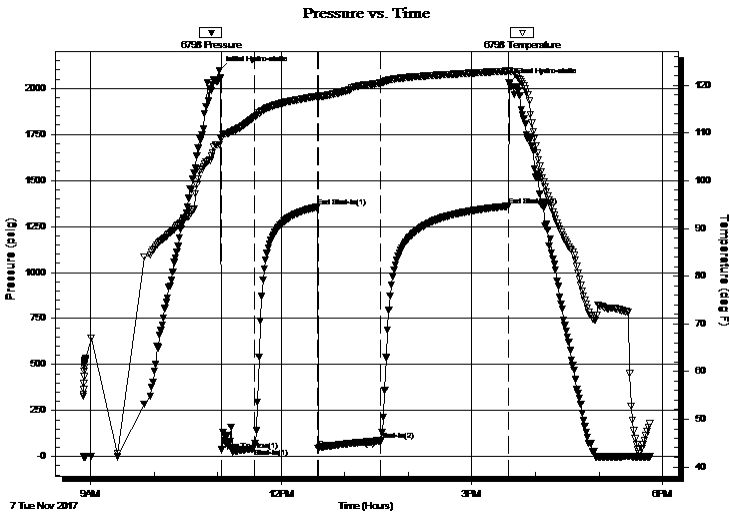
Formation: **Mississippi**
Deviated: No Whipstock: ft (KB)
Time Tool Opened: 11:03:48
Time Test Ended: 17:48:18
Interval: **4243.00 ft (KB) To 4278.00 ft (KB) (TVD)**
Total Depth: 4278.00 ft (KB) (TVD)
Hole Diameter: 7.88 inches Hole Condition: Good
Test Type: Conventional Bottom Hole (Reset)
Tester: Leal Cason
Unit No: 74
Reference Elevations: 1670.00 ft (KB)
1662.00 ft (CF)
KB to GR/CF: 8.00 ft

Serial #: 6798 Inside

Press@RunDepth: 86.75 psig @ 4244.00 ft (KB) Capacity: 8000.00 psig
Start Date: 2017.11.07 End Date: 2017.11.07 Last Calib.: 2017.11.07
Start Time: 08:53:34 End Time: 17:48:18 Time On Btm: 2017.11.07 @ 11:01:33
Time Off Btm: 2017.11.07 @ 15:35:03

TEST COMMENT: IF: Fair Blow , BOB in 16 minutes
IS: No Blow Back
FF: Weak Blow , BOB in 32 minutes
FS: No Blow Back

PRESSURE SUMMARY



Time (Min.)	Pressure (psig)	Temp (deg F)	Annotation
0	2097.30	107.59	Initial Hydro-static
3	36.87	108.80	Open To Flow (1)
33	43.59	113.24	Shut-In(1)
93	1355.31	117.70	End Shut-In(1)
94	46.29	117.68	Open To Flow (2)
153	86.75	120.51	Shut-In(2)
273	1360.35	123.00	End Shut-In(2)
274	2032.83	123.13	Final Hydro-static

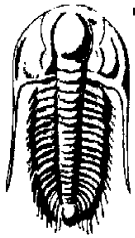
Recovery

Length (ft)	Description	Volume (bbl)
126.00	MCW 5%M 95%W	1.77
15.00	MOCW 10%M 20%O 70%W	0.21

* Recovery from multiple tests

Gas Rates

Choke (inches)	Pressure (psig)	Gas Rate (Mcf/d)



**TRILOBITE
TESTING, INC.**

DRILL STEM TEST REPORT

Pollok Energy
 501 N 4th
 Purcell, OK 73080
 ATTN: David Hickman

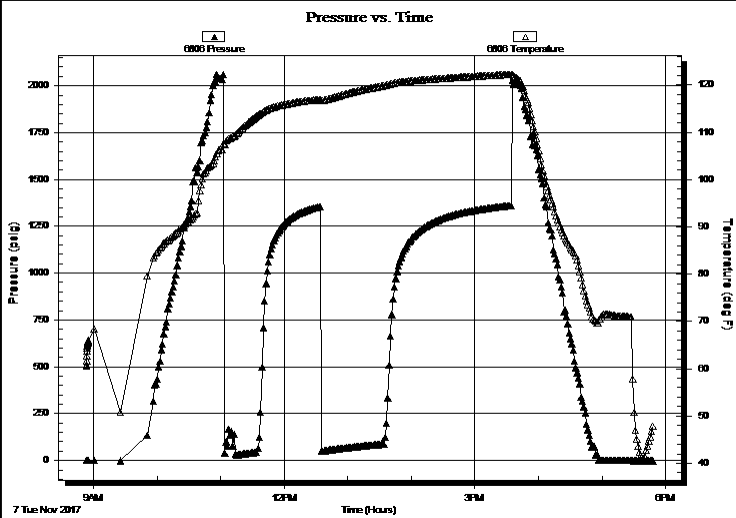
17-28S-8W Kingman
1-17 Bock
 Job Ticket: 63626 **DST#: 3**
 Test Start: 2017.11.07 @ 08:53:33

GENERAL INFORMATION:

Formation: **Mississippi**
 Deviated: No Whipstock: ft (KB) Test Type: Conventional Bottom Hole (Reset)
 Time Tool Opened: 11:03:48 Tester: Leal Cason
 Time Test Ended: 17:48:18 Unit No: 74
Interval: 4243.00 ft (KB) To 4278.00 ft (KB) (TVD) Reference Elevations: 1670.00 ft (KB)
 Total Depth: 4278.00 ft (KB) (TVD) 1662.00 ft (CF)
 Hole Diameter: 7.88 inches Hole Condition: Good KB to GR/CF: 8.00 ft

Serial #: 6806 Outside
 Press@RunDepth: psig @ 4244.00 ft (KB) Capacity: 8000.00 psig
 Start Date: 2017.11.07 End Date: 2017.11.07 Last Calib.: 2017.11.07
 Start Time: 08:53:34 End Time: 17:48:18 Time On Btm:
 Time Off Btm:

TEST COMMENT: IF: Fair Blow , BOB in 16 minutes
 IS: No Blow Back
 FF: Weak Blow , BOB in 32 minutes
 FS: No Blow Back



PRESSURE SUMMARY

Time (Min.)	Pressure (psig)	Temp (deg F)	Annotation

Recovery

Length (ft)	Description	Volume (bbl)
126.00	MCW 5%M 95%W	1.77
15.00	MOCW 10%M 20%O 70%W	0.21

Gas Rates

	Choke (inches)	Pressure (psig)	Gas Rate (Mcf/d)

* Recovery from multiple tests



**TRILOBITE
TESTING, INC.**

DRILL STEM TEST REPORT

FLUID SUMMARY

Pollok Energy

17-28S-8W Kingman

501 N 4th
Purcell, OK 73080

1-17 Bock

Job Ticket: 63626

DST#: 3

ATTN: David Hickman

Test Start: 2017.11.07 @ 08:53:33

Mud and Cushion Information

Mud Type: Gel Chem

Cushion Type:

Oil API:

deg API

Mud Weight: 9.00 lb/gal

Cushion Length:

ft

Water Salinity:

77000 ppm

Viscosity: 45.00 sec/qt

Cushion Volume:

bbbl

Water Loss: 9.36 in³

Gas Cushion Type:

Resistivity: ohm.m

Gas Cushion Pressure:

psig

Salinity: 4000.00 ppm

Filter Cake: 0.02 inches

Recovery Information

Recovery Table

Length ft	Description	Volume bbbl
126.00	MCW 5%M 95%W	1.767
15.00	MOCW 10%M 20%O 70%W	0.210

Total Length: 141.00 ft Total Volume: 1.977 bbl

Num Fluid Samples: 0

Num Gas Bombs: 0

Serial #:

Laboratory Name:

Laboratory Location:

Recovery Comments: RW w as .19 @ 37 degrees

Sampler Data: 200 ml Water

