



TRILOBITE TESTING, INC.

DRILL STEM TEST REPORT

Woolsey Operating Co
 125 N Market Ste 1000
 Wichita, KS 67202
 ATTN: Joel Gearhart

34-27S-20W Kiowa, KS

Pinkney #1

Job Ticket: 63629

DST#: 1

Test Start: 2017.11.14 @ 23:44:56

GENERAL INFORMATION:

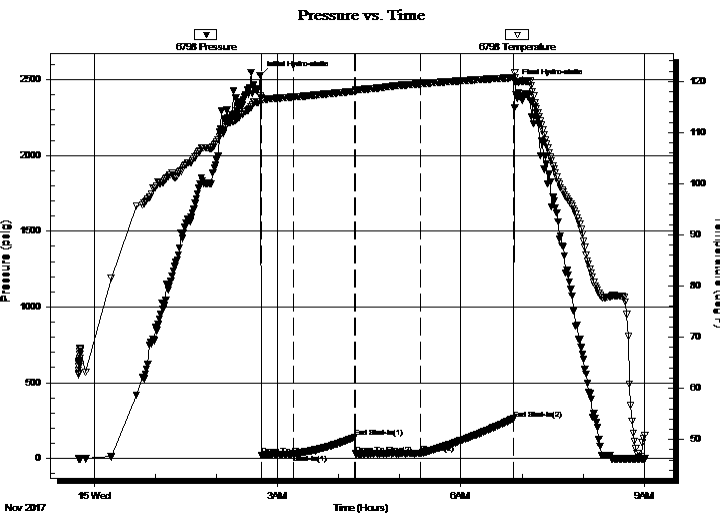
Formation: **Mississippi**
 Deviated: No Whipstock: ft (KB)
 Time Tool Opened: 02:44:11
 Time Test Ended: 09:01:11
 Interval: **4850.00 ft (KB) To 4888.00 ft (KB) (TVD)**
 Total Depth: 4888.00 ft (KB) (TVD)
 Hole Diameter: 7.88 inches Hole Condition: Good
 Test Type: Conventional Bottom Hole (Initial)
 Tester: Leal Cason
 Unit No: 74
 Reference Elevations: 2297.00 ft (KB)
 2285.00 ft (CF)
 KB to GR/CF: 12.00 ft

Serial #: 6798

Inside

Press@RunDepth: 34.45 psig @ 4851.00 ft (KB) Capacity: 8000.00 psig
 Start Date: 2017.11.14 End Date: 2017.11.15 Last Calib.: 2017.11.15
 Start Time: 23:44:57 End Time: 09:01:11 Time On Btm: 2017.11.15 @ 02:42:56
 Time Off Btm: 2017.11.15 @ 06:53:26

TEST COMMENT: IF: Weak Blow , Built to 1 inch
 IS: No Blow Back
 FF: Weak Blow , Built to 1 1/2 inches
 FS: No Blow Back



PRESSURE SUMMARY

Time (Min.)	Pressure (psig)	Temp (deg F)	Annotation
0	2525.23	117.13	Initial Hydro-static
2	21.58	116.79	Open To Flow (1)
33	31.71	116.97	Shut-In(1)
93	139.70	118.07	End Shut-In(1)
94	31.73	118.29	Open To Flow (2)
157	34.45	119.51	Shut-In(2)
249	263.42	120.73	End Shut-In(2)
251	2476.14	120.73	Final Hydro-static

Recovery

Length (ft)	Description	Volume (bbl)
20.00	GCM 5%G 95%M	0.10

Gas Rates

Choke (inches)	Pressure (psig)	Gas Rate (MMcf/d)



**TRILOBITE
TESTING, INC.**

DRILL STEM TEST REPORT

Woolsey Operating Co
125 N Market Ste 1000
Wichita, KS 67202
ATTN: Joel Gearhart

34-27S-20W Kiowa,KS

Pinkney #1

Job Ticket: 63629

DST#: 1

Test Start: 2017.11.14 @ 23:44:56

GENERAL INFORMATION:

Formation: **Mississippi**

Deviated: No Whipstock: ft (KB)

Time Tool Opened: 02:44:11

Time Test Ended: 09:01:11

Interval: 4850.00 ft (KB) To 4888.00 ft (KB) (TVD)

Total Depth: 4888.00 ft (KB) (TVD)

Hole Diameter: 7.88 inches Hole Condition: Good

Test Type: Conventional Bottom Hole (Initial)

Tester: Leal Cason

Unit No: 74

Reference Elevations: 2297.00 ft (KB)

2285.00 ft (CF)

KB to GR/CF: 12.00 ft

Serial #: 6806 Outside

Press@RunDepth: psig @ 4851.00 ft (KB)

Start Date: 2017.11.14

End Date:

2017.11.15

Start Time: 23:44:57

End Time:

09:01:26

Capacity: 8000.00 psig

Last Calib.:

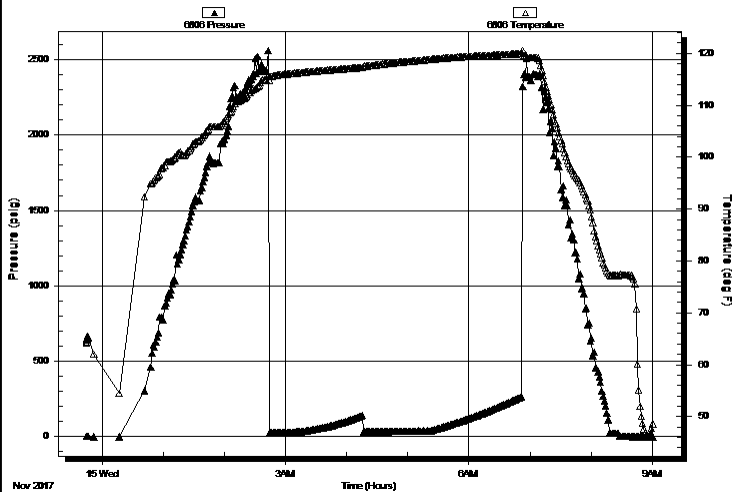
2017.11.15

Time On Btm:

Time Off Btm:

TEST COMMENT: IF: Weak Blow , Built to 1 inch
IS: No Blow Back
FF: Weak Blow , Built to 1 1/2 inches
FS: No Blow Back

Pressure vs. Time



PRESSURE SUMMARY

Time (Min.)	Pressure (psig)	Temp (deg F)	Annotation

Recovery

Length (ft)	Description	Volume (bbl)
20.00	GCM 5%G 95%M	0.10

Gas Rates

	Choke (inches)	Pressure (psig)	Gas Rate (MMcf/d)



**TRILOBITE
TESTING, INC.**

DRILL STEM TEST REPORT

FLUID SUMMARY

Woolsey Operating Co
125 N Market Ste 1000
Wichita, KS 67202
ATTN: Joel Gearhart

34-27S-20W Kiowa, KS
Pinkney #1
Job Ticket: 63629 **DST#: 1**
Test Start: 2017.11.14 @ 23:44:56

Mud and Cushion Information

Mud Type: Gel Chem	Cushion Type:	Oil API:	deg API
Mud Weight: 9.00 lb/gal	Cushion Length: ft	Water Salinity:	ppm
Viscosity: 54.00 sec/qt	Cushion Volume: bbl		
Water Loss: 8.79 in ³	Gas Cushion Type:		
Resistivity: ohm.m	Gas Cushion Pressure: psig		
Salinity: 5100.00 ppm			
Filter Cake: 0.02 inches			

Recovery Information

Recovery Table

Length ft	Description	Volume bbl
20.00	GCM 5%G 95%M	0.098

Total Length: 20.00 ft Total Volume: 0.098 bbl

Num Fluid Samples: 0 Num Gas Bombs: 0 Serial #:

Laboratory Name: Laboratory Location:

Recovery Comments:

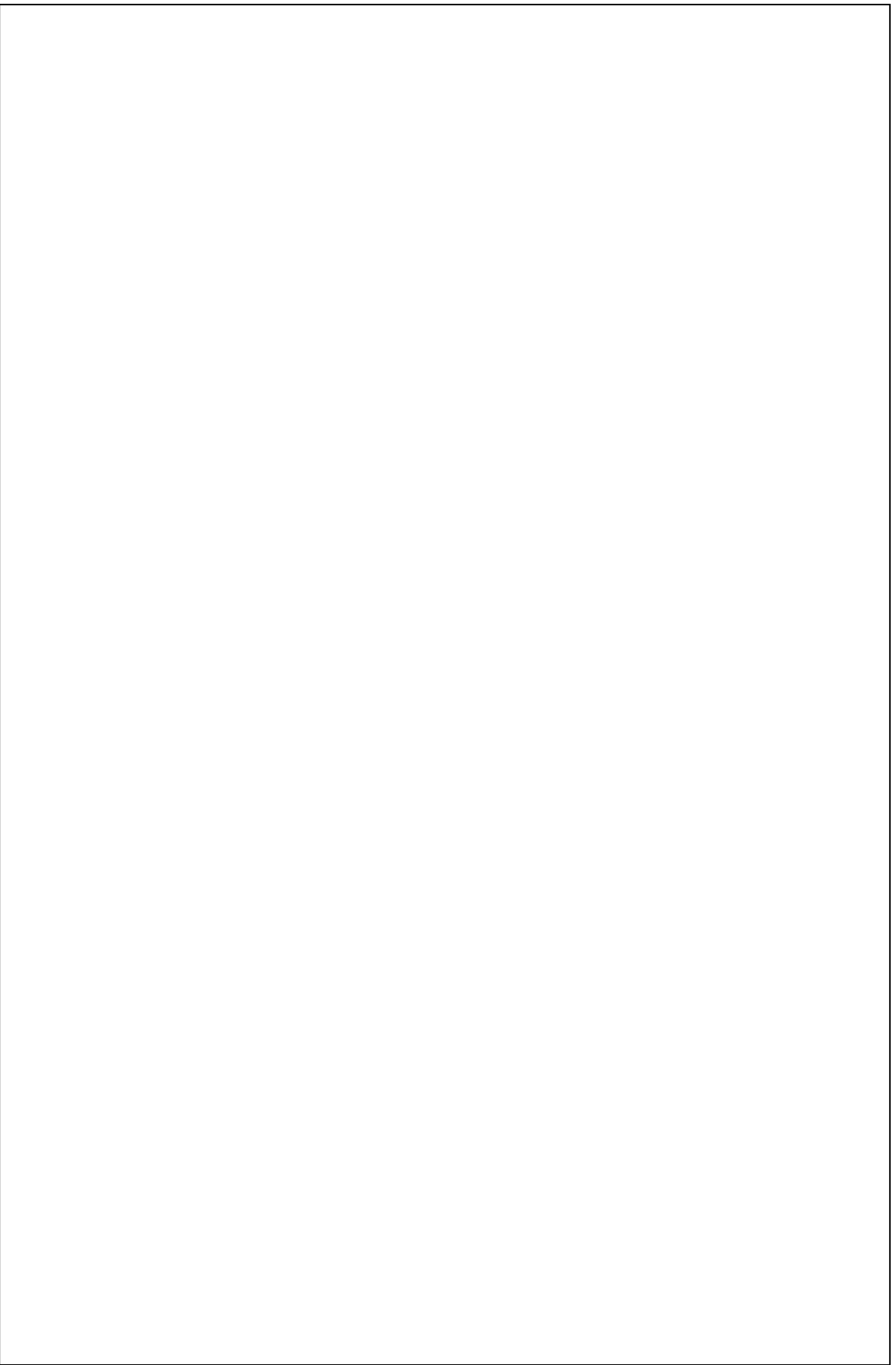
Serial #: 6798

Inside

Woodsey Operating Co

Pinkney #1

DST Test Number: 1



Triobite Testing, Inc

Ref. No: 63629

Printed: 2017.11.15 @ 09:21:04

