



TRILOBITE TESTING, INC.

DRILL STEM TEST REPORT

Woolsey Operating Co
 125 N Market Ste 1000
 Wichita, KS 67202
 ATTN: Joel Gearhart

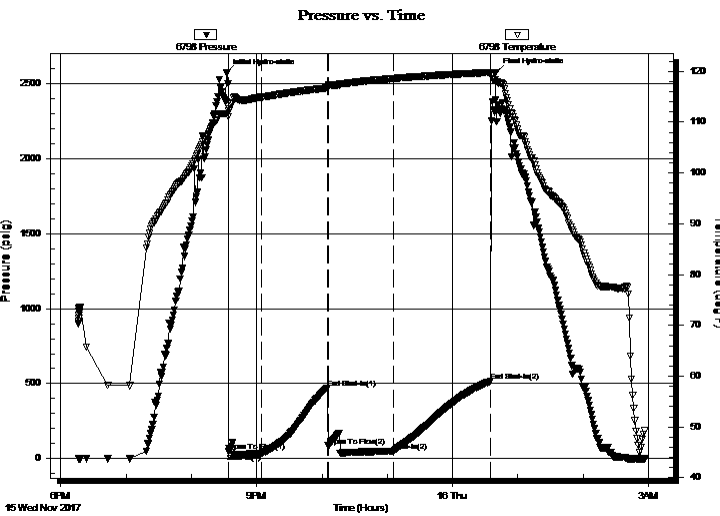
34-27S-20W Kiow
Pinkney 1
 Job Ticket: 63630 **DST#: 2**
 Test Start: 2017.11.15 @ 18:16:21

GENERAL INFORMATION:

Formation: **Mississippi**
 Deviated: No Whipstock: ft (KB)
 Time Tool Opened: 20:34:21
 Time Test Ended: 02:56:51
 Interval: **4882.00 ft (KB) To 4906.00 ft (KB) (TVD)**
 Total Depth: 4906.00 ft (KB) (TVD)
 Hole Diameter: 7.88 inches Hole Condition: Good
 Test Type: Conventional Bottom Hole (Reset)
 Tester: Leal Cason
 Unit No: 74
 Reference Elevations: 2297.00 ft (KB)
 2285.00 ft (CF)
 KB to GR/CF: 12.00 ft

Serial #: 6798 **Inside**
 Press@RunDepth: 50.86 psig @ 4883.00 ft (KB) Capacity: 8000.00 psig
 Start Date: 2017.11.15 End Date: 2017.11.16 Last Calib.: 2017.11.16
 Start Time: 18:16:22 End Time: 02:56:51 Time On Btm: 2017.11.15 @ 20:32:36
 Time Off Btm: 2017.11.16 @ 00:39:51

TEST COMMENT: IF: Fair Blow , Built to 5 1/2 inches
 IS: No Blow Back
 FF: Fair Blow , Built to 6 inches
 FS: No Blow Back



PRESSURE SUMMARY

| Time (Min.) | Pressure (psig) | Temp (deg F) | Annotation |
|-------------|-----------------|--------------|----------------------|
| 0 | 2572.37 | 111.62 | Initial Hydro-static |
| 2 | 47.31 | 112.15 | Open To Flow (1) |
| 32 | 33.95 | 114.90 | Shut-In(1) |
| 93 | 471.39 | 116.70 | End Shut-In(1) |
| 94 | 79.58 | 117.11 | Open To Flow (2) |
| 153 | 50.86 | 118.56 | Shut-In(2) |
| 243 | 515.38 | 119.77 | End Shut-In(2) |
| 248 | 2576.80 | 118.31 | Final Hydro-static |

Recovery

| Length (ft) | Description | Volume (bbl) |
|-------------|-------------|--------------|
| 62.00 | Mud | 0.30 |
| | | |
| | | |
| | | |
| | | |

* Recovery from multiple tests

Gas Rates

| Choke (inches) | Pressure (psig) | Gas Rate (MMcf/d) |
|----------------|-----------------|-------------------|
| | | |



TRILOBITE
TESTING, INC.

DRILL STEM TEST REPORT

Woolsey Operating Co
125 N Market Ste 1000
Wichita, KS 67202
ATTN: Joel Gearhart

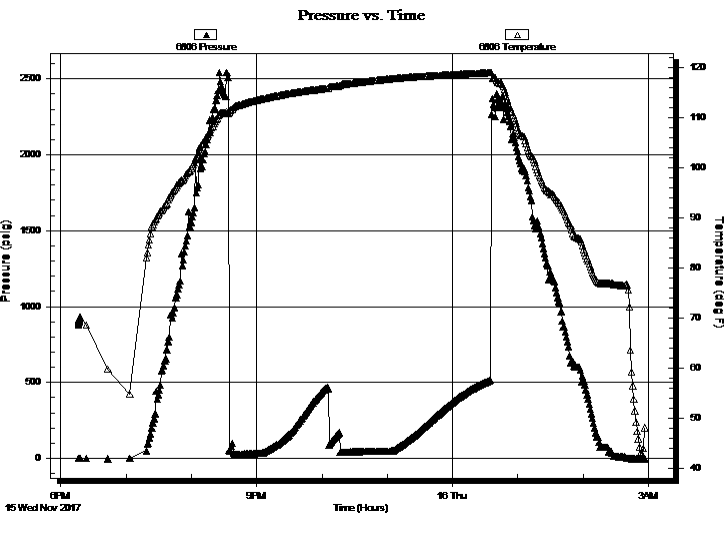
34-27S-20W Kiow
Pinkney 1
Job Ticket: 63630 **DST#: 2**
Test Start: 2017.11.15 @ 18:16:21

GENERAL INFORMATION:

Formation: **Mississippi**
 Deviated: No Whipstock: ft (KB)
 Test Type: Conventional Bottom Hole (Reset)
 Time Tool Opened: 20:34:21 Tester: Leal Cason
 Time Test Ended: 02:56:51 Unit No: 74
Interval: 4882.00 ft (KB) To 4906.00 ft (KB) (TVD)
 Reference Elevations: 2297.00 ft (KB)
 Total Depth: 4906.00 ft (KB) (TVD) 2285.00 ft (CF)
 Hole Diameter: 7.88 inches Hole Condition: Good KB to GR/CF: 12.00 ft

Serial #: 6806 Outside
 Press@RunDepth: psig @ 4883.00 ft (KB) Capacity: 8000.00 psig
 Start Date: 2017.11.15 End Date: 2017.11.16 Last Calib.: 2017.11.16
 Start Time: 18:16:22 End Time: 02:56:51 Time On Btm:
 Time Off Btm:

TEST COMMENT: IF: Fair Blow , Built to 5 1/2 inches
 IS: No Blow Back
 FF: Fair Blow , Built to 6 inches
 FS: No Blow Back



| PRESSURE SUMMARY | | | |
|------------------|-----------------|--------------|------------|
| Time (Min.) | Pressure (psig) | Temp (deg F) | Annotation |
| | | | |
| | | | |
| | | | |
| | | | |
| | | | |
| | | | |

Recovery

| Length (ft) | Description | Volume (bbl) |
|-------------|-------------|--------------|
| 62.00 | Mud | 0.30 |
| | | |
| | | |
| | | |
| | | |

* Recovery from multiple tests

Gas Rates

| | Choke (inches) | Pressure (psig) | Gas Rate (MMcf/d) |
|--|----------------|-----------------|-------------------|
| | | | |
| | | | |
| | | | |
| | | | |



**TRILOBITE
TESTING, INC.**

DRILL STEM TEST REPORT

FLUID SUMMARY

Woolsey Operating Co
125 N Market Ste 1000
Wichita, KS 67202
ATTN: Joel Gearhart

34-27S-20W Kiow
Pinkney 1
Job Ticket: 63630 **DST#: 2**
Test Start: 2017.11.15 @ 18:16:21

Mud and Cushion Information

| | | | |
|----------------------------------|----------------------------|-----------------|---------|
| Mud Type: Gel Chem | Cushion Type: | Oil API: | deg API |
| Mud Weight: 9.00 lb/gal | Cushion Length: ft | Water Salinity: | ppm |
| Viscosity: 54.00 sec/qt | Cushion Volume: bbl | | |
| Water Loss: 8.78 in ³ | Gas Cushion Type: | | |
| Resistivity: ohm.m | Gas Cushion Pressure: psig | | |
| Salinity: 5100.00 ppm | | | |
| Filter Cake: 0.02 inches | | | |

Recovery Information

Recovery Table

| Length ft | Description | Volume bbl |
|--------------|-------------|---------------|
| 62.00 | Mud | 0.305 |

Total Length: 62.00 ft Total Volume: 0.305 bbl
Num Fluid Samples: 0 Num Gas Bombs: 0 Serial #:
Laboratory Name: Laboratory Location:
Recovery Comments:

Serial #: 6798

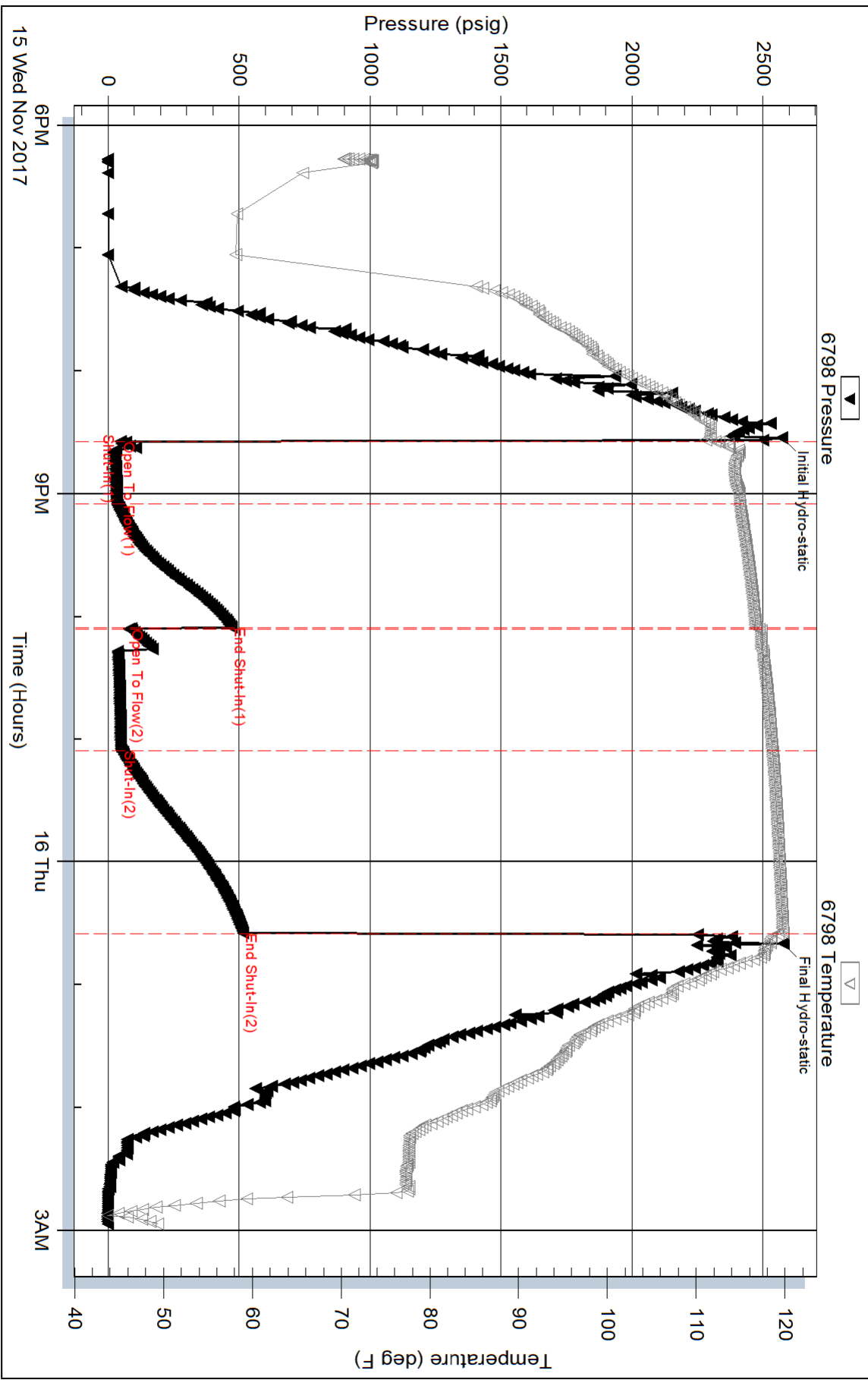
Inside

Woodsey Operating Co

Pinkney 1

DST Test Number: 2

Pressure vs. Time



Triobite Testing, Inc

Ref. No: 63630

Printed: 2017.11.16 @ 10:37:41

Serial #: 6806

Outside Woodsey Operating Co

Pinkney 1

DST Test Number: 2

