



**TRILOBITE TESTING, INC.**

# DRILL STEM TEST REPORT

Darrah, John Jay Jr

**32/20S/13W/Barton**

PO Box 2786  
Wichita, Kansas  
67201+2786

**Gaunt-Wright # 1-32**

Job Ticket: 62642

**DST#: 1**

ATTN: Seth Evenson

Test Start: 2017.09.18 @ 14:32:00

## GENERAL INFORMATION:

Formation: **Lansing/Kansas City**

Deviated: No Whipstock: ft (KB)

Time Tool Opened: 15:53:32

Time Test Ended: 19:30:17

Test Type: Conventional Bottom Hole (Initial)

Tester: Ken Swinney

Unit No: 72 Great Bend/18

**Interval: 3401.00 ft (KB) To 3510.00 ft (KB) (TVD)**

Reference Elevations: 1907.00 ft (KB)

Total Depth: 3510.00 ft (KB) (TVD)

1900.00 ft (CF)

Hole Diameter: 7.80 inches Hole Condition: Fair

KB to GR/CF: 7.00 ft

**Serial #: 6755**

**Inside**

Press@RunDepth: 101.88 psig @ 3402.00 ft (KB)

Capacity: psig

Start Date: 2017.09.18

End Date: 2017.09.18

Last Calib.: 2017.09.18

Start Time: 14:32:01

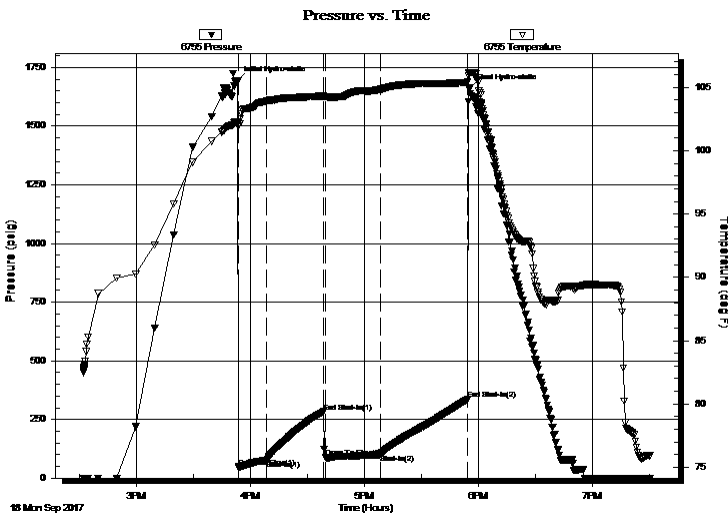
End Time: 19:30:17

Time On Btm: 2017.09.18 @ 15:53:17

Time Off Btm: 2017.09.18 @ 17:55:02

**TEST COMMENT:** I.F. 15 Minutes/ Blow built to BOB in 4 1/2 minutes  
I.S.I. 30 Minutes/ Blow back built to 5 inches  
F.F. 30 Minutes/ Blow built to BOB in 1 minute  
F.S.I. 45 Minutes/ Blow back built to 9 inches

## PRESSURE SUMMARY



Time (Min.)	Pressure (psig)	Temp (deg F)	Annotation
0	1691.71	102.31	Initial Hydro-static
1	47.86	101.89	Open To Flow (1)
15	76.19	103.92	Shut-In(1)
45	282.48	104.31	End Shut-In(1)
46	88.61	104.27	Open To Flow (2)
76	101.88	104.85	Shut-In(2)
121	334.64	105.42	End Shut-In(2)
122	1661.19	106.12	Final Hydro-static

## Recovery

Length (ft)	Description	Volume (bbl)
30.00	Emulsified Oil & Mud	0.42
0.00	Oil 10% Mud 90%	0.00
62.00	Gassy Emulsified Oil & Mud	0.87
0.00	Oil 20% Gas 40% Mud 40%	0.00
62.00	Muddy Gassy Oil	0.87
0.00	Mud 25% Gas 30% Oil 45%	0.00

## Gas Rates

Choke (inches)	Pressure (psig)	Gas Rate (Mcf/d)



**TRILOBITE TESTING, INC.**

# DRILL STEM TEST REPORT

Darrah, John Jay Jr

**32/20S/13W/Barton**

PO Box 2786  
Wichita, Kansas  
67201+2786

**Gaunt-Wright # 1-32**

Job Ticket: 62642

**DST#: 1**

ATTN: Seth Evenson

Test Start: 2017.09.18 @ 14:32:00

## GENERAL INFORMATION:

Formation: **Lansing/Kansas City**

Deviated: No Whipstock: ft (KB)

Time Tool Opened: 15:53:32

Time Test Ended: 19:30:17

Test Type: Conventional Bottom Hole (Initial)

Tester: Ken Swinney

Unit No: 72 Great Bend/18

**Interval: 3401.00 ft (KB) To 3510.00 ft (KB) (TVD)**

Reference Elevations: 1907.00 ft (KB)

Total Depth: 3510.00 ft (KB) (TVD)

1900.00 ft (CF)

Hole Diameter: 7.80 inches Hole Condition: Fair

KB to GR/CF: 7.00 ft

**Serial #: 8322 Outside**

Press@RunDepth: 336.44 psig @ 3403.00 ft (KB)

Capacity: psig

Start Date: 2017.09.18

End Date: 2017.09.18

Last Calib.: 2017.09.18

Start Time: 14:32:01

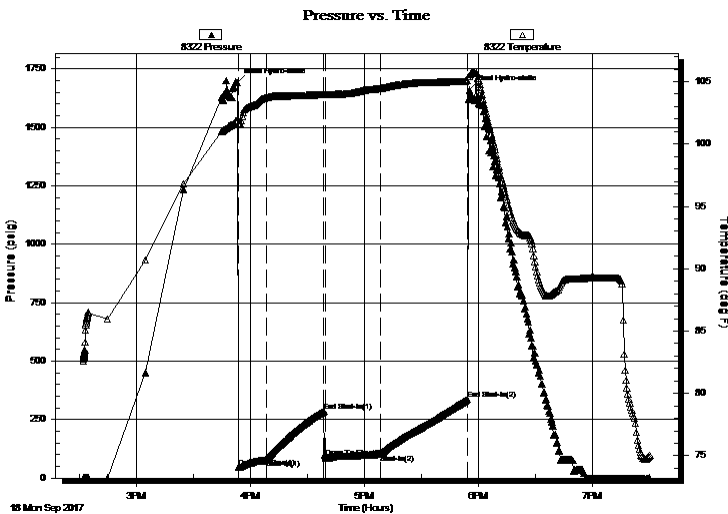
End Time: 19:30:17

Time On Btm: 2017.09.18 @ 15:53:02

Time Off Btm: 2017.09.18 @ 17:55:02

**TEST COMMENT:** I.F. 15 Minutes/ Blow built to BOB in 4 1/2 minutes  
I.S.I. 30 Minutes/ Blow back built to 5 inches  
F.F. 30 Minutes/ Blow built to BOB in 1 minute  
F.S.I. 45 Minutes/ Blow back built to 9 inches

## PRESSURE SUMMARY



Time (Min.)	Pressure (psig)	Temp (deg F)	Annotation
0	1691.90	101.90	Initial Hydro-static
1	47.16	101.63	Open To Flow (1)
16	79.44	103.73	Shut-In(1)
46	286.12	103.97	End Shut-In(1)
47	87.96	103.97	Open To Flow (2)
76	102.38	104.46	Shut-In(2)
121	336.44	105.06	End Shut-In(2)
122	1660.16	105.44	Final Hydro-static

## Recovery

Length (ft)	Description	Volume (bbl)
30.00	Emulsified Oil & Mud	0.42
0.00	Oil 10% Mud 90%	0.00
62.00	Gassy Emulsified Oil & Mud	0.87
0.00	Oil 20% Gas 40% Mud 40%	0.00
62.00	Muddy Gassy Oil	0.87
0.00	Mud 25% Gas 30% Oil 45%	0.00

## Gas Rates

Choke (inches)	Pressure (psig)	Gas Rate (Mcf/d)



**TRILOBITE  
TESTING, INC.**

# DRILL STEM TEST REPORT

**FLUID SUMMARY**

Darrah, John Jay Jr

**32/20S/13W/Barton**

PO Box 2786  
Wichita, Kansas  
67201+2786

**Gaunt-Wright # 1-32**

Job Ticket: 62642

**DST#: 1**

ATTN: Seth Evenson

Test Start: 2017.09.18 @ 14:32:00

## Mud and Cushion Information

Mud Type: Gel Chem

Cushion Type:

Oil API:

deg API

Mud Weight: 9.00 lb/gal

Cushion Length:

ft

Water Salinity:

ppm

Viscosity: 48.00 sec/qt

Cushion Volume:

bbbl

Water Loss: in<sup>3</sup>

Gas Cushion Type:

Resistivity: ohm.m

Gas Cushion Pressure:

psig

Salinity: ppm

Filter Cake: inches

## Recovery Information

Recovery Table

Length ft	Description	Volume bbl
30.00	Emulsified Oil & Mud	0.421
0.00	Oil 10% Mud 90%	0.000
62.00	Gassy Emulsified Oil & Mud	0.870
0.00	Oil 20% Gas 40% Mud 40%	0.000
62.00	Muddy Gassy Oil	0.870
0.00	Mud 25% Gas 30% Oil 45%	0.000
62.00	Emulsified Oily Gassy Mud	0.870
0.00	Oil 20% Gas 30% Mud 50%	0.000
0.00	1209 feet of gas in pipe	0.000

Total Length: 216.00 ft      Total Volume: 3.031 bbl

Num Fluid Samples: 0

Num Gas Bombs: 0

Serial #:

Laboratory Name:

Laboratory Location:

Recovery Comments:

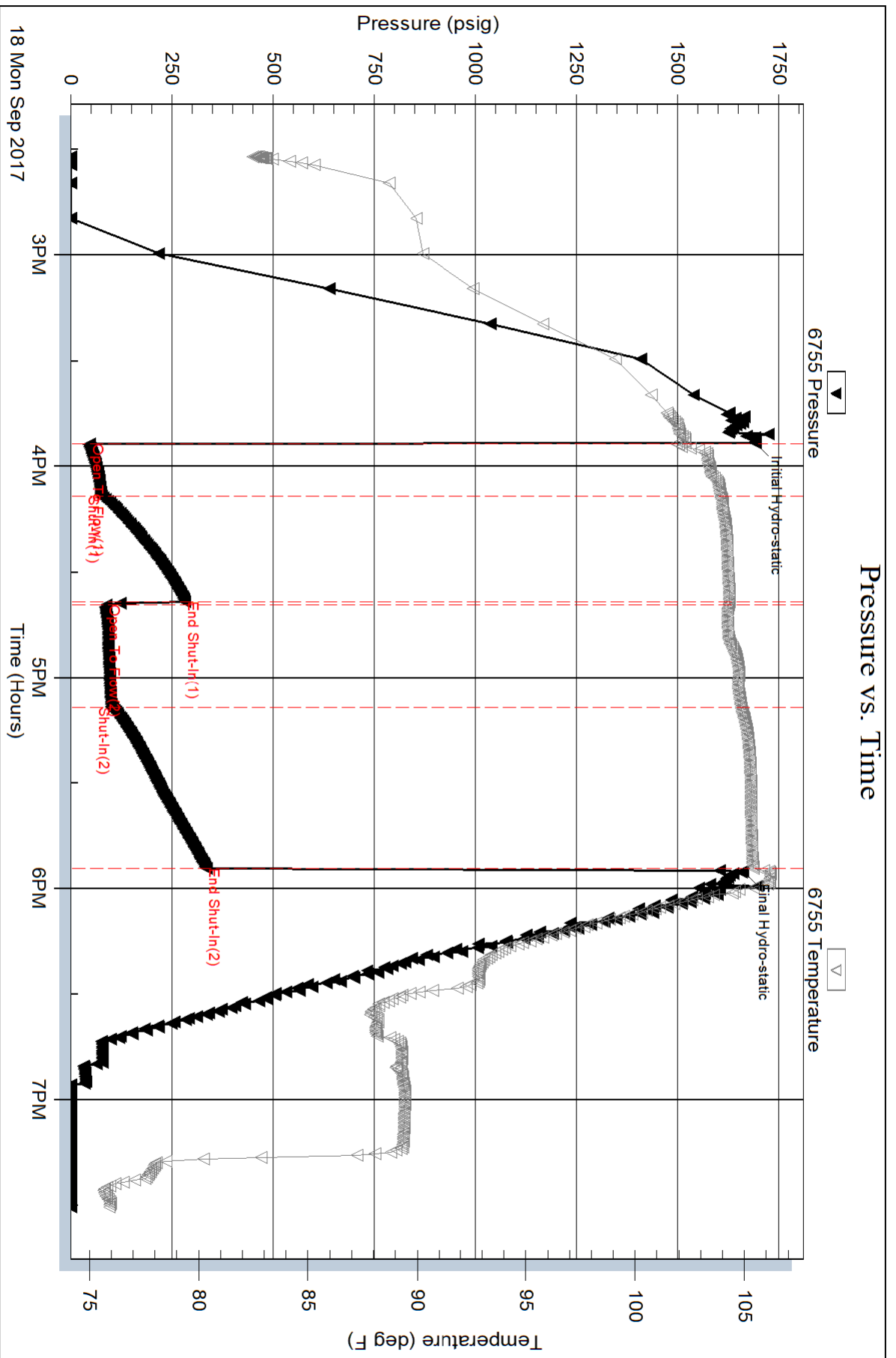
Serial #: 6755

Inside

Darrah, John Jay Jr

Gaunt-Wright # 1-32

DST Test Number: 1



### Pressure vs. Time

