



## DRILL STEM TEST REPORT

Prepared For: **Downing Nelson Oil Co, Inc**

PO Box 1019  
Hays, KS 67601

ATTN: Mark Downing

### **Albers #1-29**

#### **29-9s-31w Thomas,KS**

Start Date: 2017.11.12 @ 19:46:00

End Date: 2017.11.13 @ 04:13:45

Job Ticket #: 64378                      DST #: 1

Trilobite Testing, Inc

PO Box 362 Hays, KS 67601

ph: 785-625-4778 fax: 785-625-5620

Printed: 2017.11.16 @ 10:23:08



**TRILOBITE TESTING, INC.**

# DRILL STEM TEST REPORT

Downing Nelson Oil Co, Inc

**29-9s-31w Thomas,KS**

PO Box 1019  
Hays, KS 67601

**Albers #1-29**

Job Ticket: 64378

**DST#: 1**

ATTN: Mark Downing

Test Start: 2017.11.12 @ 19:46:00

## GENERAL INFORMATION:

Formation: **LKC H-J**

Deviated: No Whipstock: ft (KB)

Time Tool Opened: 22:40:00

Time Test Ended: 04:13:45

Test Type: Conventional Bottom Hole (Initial)

Tester: Bradley Walter

Unit No: 78

**Interval: 4194.00 ft (KB) To 4287.00 ft (KB) (TVD)**

Reference Elevations: 3034.00 ft (KB)

Total Depth: 4287.00 ft (KB) (TVD)

3026.00 ft (CF)

Hole Diameter: 7.88 inches Hole Condition: Good

KB to GR/CF: 8.00 ft

**Serial #: 8365**

**Inside**

Press@RunDepth: 131.96 psig @ 4195.00 ft (KB)

Capacity: 8000.00 psig

Start Date: 2017.11.12

End Date:

2017.11.13

Last Calib.: 2017.11.13

Start Time: 19:46:05

End Time:

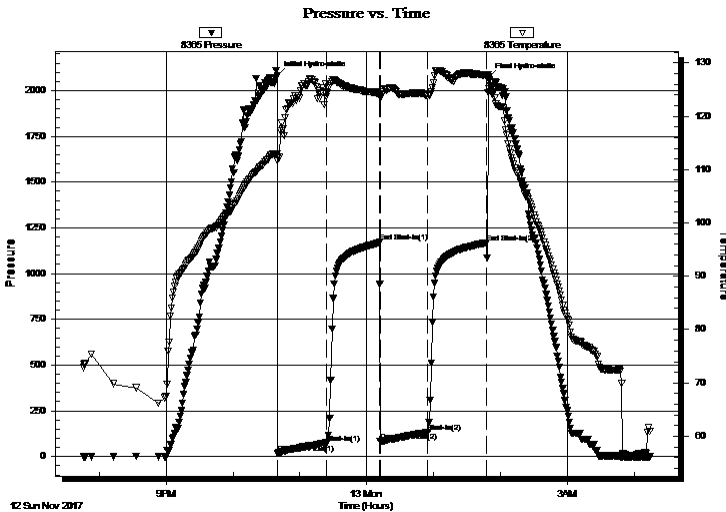
04:13:44

Time On Btm: 2017.11.12 @ 22:39:45

Time Off Btm: 2017.11.13 @ 01:49:00

TEST COMMENT: IF: 9" blow.  
IS: No return.  
FF: 8" Blow.  
FS: No return.

## PRESSURE SUMMARY



Time (Min.)	Pressure (psig)	Temp (deg F)	Annotation
0	2081.14	113.01	Initial Hydro-static
1	18.32	111.64	Open To Flow (1)
44	74.05	124.28	Shut-In(1)
92	1170.32	124.24	End Shut-In(1)
93	82.17	123.53	Open To Flow (2)
135	131.96	123.86	Shut-In(2)
188	1167.84	127.72	End Shut-In(2)
190	2073.08	127.17	Final Hydro-static

## Recovery

Length (ft)	Description	Volume (bbl)
240.00	mcw 40m 60w (oil spots)	1.76
10.00	oil 100o	0.07

## Gas Rates

	Choke (inches)	Pressure (psig)	Gas Rate (Mcf/d)



**TRILOBITE TESTING, INC.**

# DRILL STEM TEST REPORT

Dow ning Nelson Oil Co, Inc

**29-9s-31w Thomas,KS**

PO Box 1019  
Hays, KS 67601

**Albers #1-29**

Job Ticket: 64378

**DST#: 1**

ATTN: Mark Dow ning

Test Start: 2017.11.12 @ 19:46:00

## GENERAL INFORMATION:

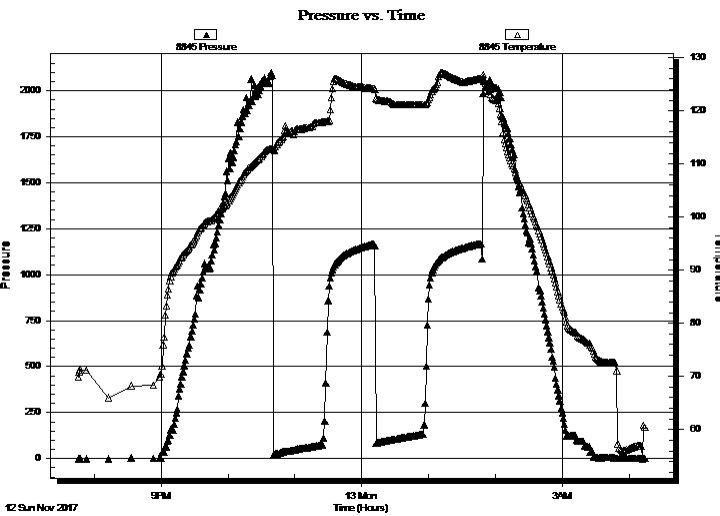
Formation: <b>LKC H-J</b>			Test Type: Conventional Bottom Hole (Initial)
Deviated: No Whipstock:	ft (KB)		Tester: Bradley Walter
Time Tool Opened: 22:40:00			Unit No: 78
Time Test Ended: 04:13:45			Reference Elevations: 3034.00 ft (KB)
<b>Interval: 4194.00 ft (KB) To 4287.00 ft (KB) (TVD)</b>			3026.00 ft (CF)
Total Depth: 4287.00 ft (KB) (TVD)			KB to GR/CF: 8.00 ft
Hole Diameter: 7.88 inches	Hole Condition: Good		

## Serial #: 8845

**Outside**

Press@RunDepth:	psig @ 4195.00 ft (KB)	Capacity:	8000.00 psig
Start Date:	2017.11.12	End Date:	2017.11.13
Start Time:	19:46:05	End Time:	04:13:44
		Last Calib.:	1899.12.30
		Time On Btm:	
		Time Off Btm:	

TEST COMMENT: IF: 9" blow .  
IS: No return.  
FF: 8" Blow .  
FS: No return.



## PRESSURE SUMMARY

Time (Min.)	Pressure (psig)	Temp (deg F)	Annotation

## Recovery

Length (ft)	Description	Volume (bbl)
240.00	mcw 40m 60w (oil spots)	1.76
10.00	oil 100o	0.07

## Gas Rates

Choke (inches)	Pressure (psig)	Gas Rate (Mcf/d)



**TRILOBITE  
TESTING, INC.**

# DRILL STEM TEST REPORT

**TOOL DIAGRAM**

Dow ning Nelson Oil Co, Inc

**29-9s-31w Thomas,KS**

PO Box 1019  
Hays, KS 67601

**Albers #1-29**

Job Ticket: 64378

**DST#: 1**

ATTN: Mark Dow ning

Test Start: 2017.11.12 @ 19:46:00

## Tool Information

Drill Pipe:	Length: 3880.00 ft	Diameter: 3.80 inches	Volume: 54.43 bbl	Tool Weight: 2000.00 lb
Heavy Wt. Pipe:	Length: 311.00 ft	Diameter: 2.75 inches	Volume: 2.28 bbl	Weight set on Packer: 25000.00 lb
Drill Collar:	Length: 0.00 ft	Diameter: 2.25 inches	Volume: 0.00 bbl	Weight to Pull Loose: 80000.00 lb
			<u>Total Volume: 56.71 bbl</u>	Tool Chased 0.00 ft
Drill Pipe Above KB:	17.00 ft			String Weight: Initial 60000.00 lb
Depth to Top Packer:	4194.00 ft			Final 61000.00 lb
Depth to Bottom Packer:	ft			
Interval betw een Packers:	93.00 ft			
Tool Length:	113.00 ft			
Number of Packers:	2	Diameter: 6.75 inches		

Tool Comments:

## Tool Description

Tool Description	Length (ft)	Serial No.	Position	Depth (ft)	Accum. Lengths
Change Over Sub	1.00			4175.00	
Shut In Tool	5.00			4180.00	
Hydraulic tool	5.00			4185.00	
Packer	5.00			4190.00	20.00 Bottom Of Top Packer
Packer	4.00			4194.00	
Stubb	1.00			4195.00	
Recorder	0.00	8365	Inside	4195.00	
Recorder	0.00	8845	Outside	4195.00	
Perforations	24.00			4219.00	
Change Over Sub	1.00			4220.00	
Drill Pipe	63.00			4283.00	
Change Over Sub	1.00			4284.00	
Bullnose	3.00			4287.00	93.00 Bottom Packers & Anchor

**Total Tool Length: 113.00**



**TRILOBITE  
TESTING, INC.**

# DRILL STEM TEST REPORT

## FLUID SUMMARY

Downing Nelson Oil Co, Inc

**29-9s-31w Thomas,KS**

PO Box 1019  
Hays, KS 67601

**Albers #1-29**

Job Ticket: 64378

**DST#: 1**

ATTN: Mark Downing

Test Start: 2017.11.12 @ 19:46:00

### Mud and Cushion Information

Mud Type: Gel Chem

Cushion Type:

Oil API:

34 deg API

Mud Weight: 9.00 lb/gal

Cushion Length:

ft

Water Salinity:

26000 ppm

Viscosity: 50.00 sec/qt

Cushion Volume:

bbbl

Water Loss: 7.99 in<sup>3</sup>

Gas Cushion Type:

Resistivity: ohm.m

Gas Cushion Pressure:

psig

Salinity: 2000.00 ppm

Filter Cake: 1.00 inches

### Recovery Information

Recovery Table

Length ft	Description	Volume bbbl
240.00	mcw 40m 60w (oil spots)	1.763
10.00	oil 100o	0.073

Total Length: 250.00 ft      Total Volume: 1.836 bbl

Num Fluid Samples: 0

Num Gas Bombs: 0

Serial #:

Laboratory Name:

Laboratory Location:

Recovery Comments: rw is .315 @ 57f = 26000ppm

Serial #: 8365

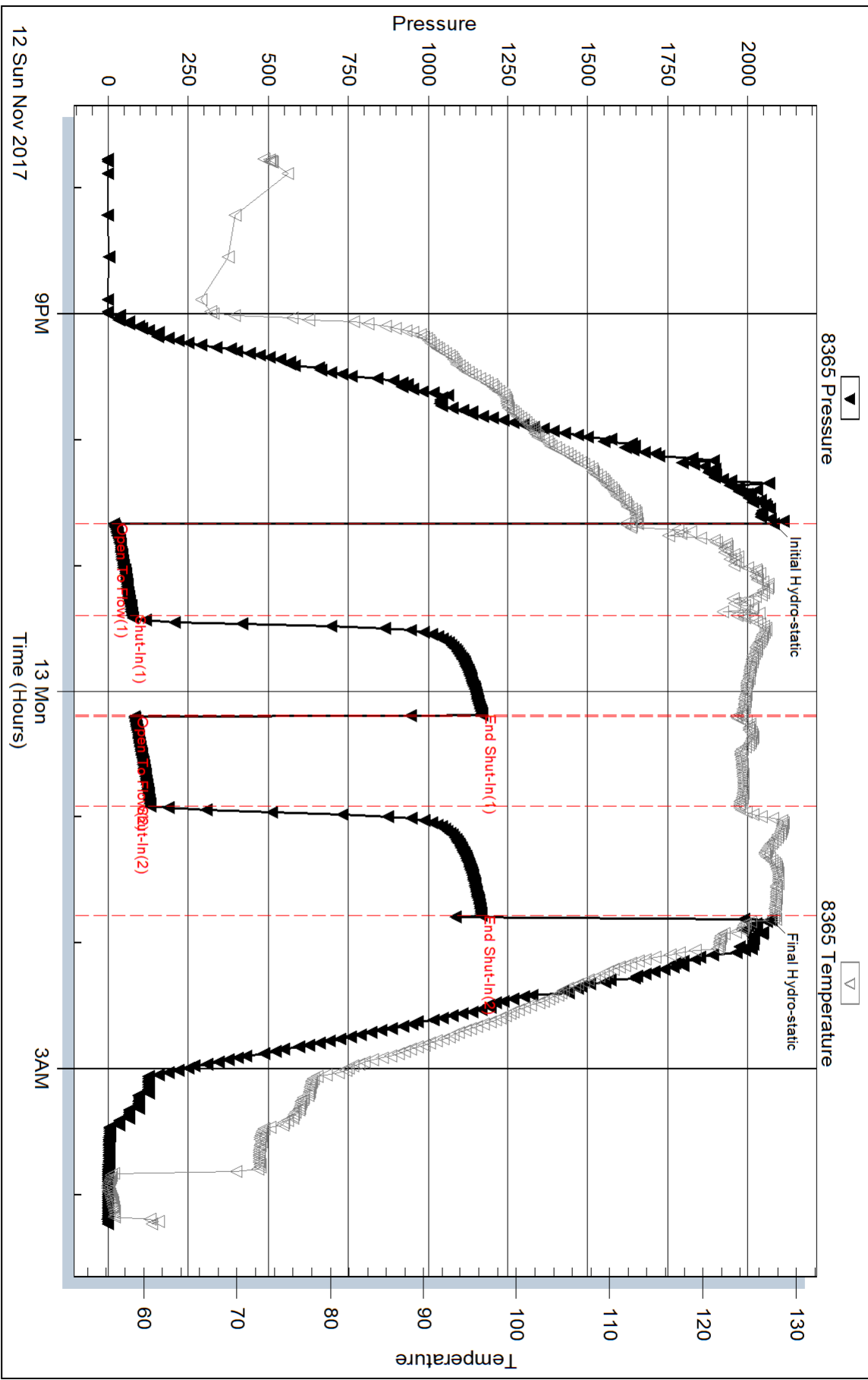
Inside

Downing Nelson Oil Co, Inc

Albers #1-29

DST Test Number: 1

### Pressure vs. Time



Triobite Testing, Inc

Ref. No: 64378

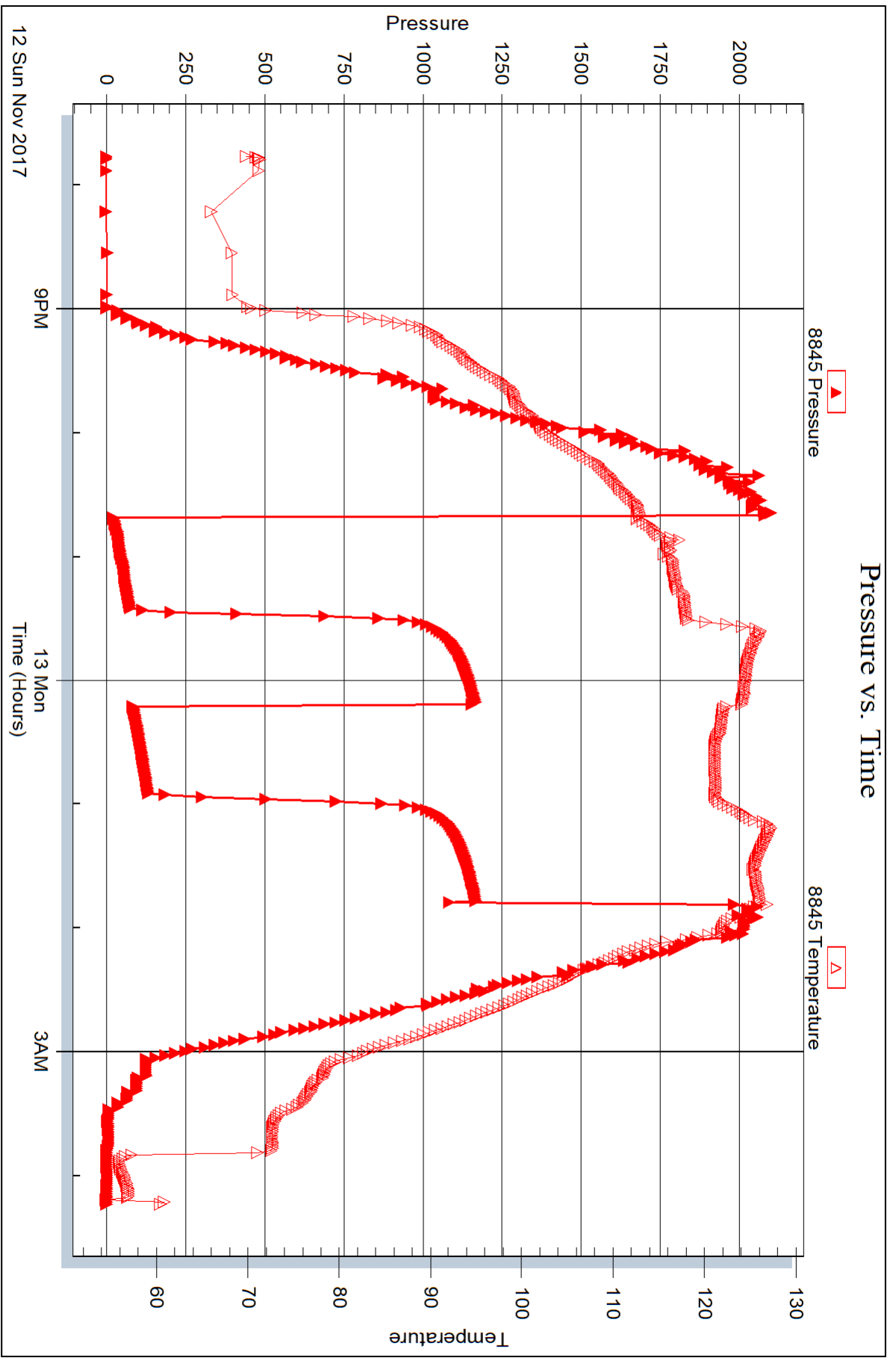
Printed: 2017.11.16 @ 10:23:16

Serial #: 8845

Outside Dow n ing Nelson Oil Co, Inc

Albers #1-29

DST Test Number: 1



Trilobite Testing, Inc

Ref. No: 64378

Printed: 2017.11.16 @ 10:23:16



## DRILL STEM TEST REPORT

Prepared For: **Downing Nelson Oil Co, Inc**

PO Box 1019  
Hays, KS 67601

ATTN: Mark Downing

### **Albers #1-29**

#### **29-9s-31w Thomas,KS**

Start Date: 2017.11.13 @ 14:47:00

End Date: 2017.11.13 @ 22:51:00

Job Ticket #: 64379                      DST #: 2

Trilobite Testing, Inc

PO Box 362 Hays, KS 67601

ph: 785-625-4778 fax: 785-625-5620

Printed: 2017.11.16 @ 10:22:31





**TRILOBITE  
TESTING, INC.**

# DRILL STEM TEST REPORT

Dow ning Nelson Oil Co, Inc

**29-9s-31w Thomas,KS**

PO Box 1019  
Hays, KS 67601

**Albers #1-29**

Job Ticket: 64379

**DST#: 2**

ATTN: Mark Dow ning

Test Start: 2017.11.13 @ 14:47:00

## GENERAL INFORMATION:

Formation: **LKC L**

Deviated: No Whipstock: ft (KB)

Time Tool Opened: 18:01:00

Time Test Ended: 22:51:00

Test Type: Conventional Bottom Hole (Reset)

Tester: Bradley Walter

Unit No: 78

**Interval: 4314.00 ft (KB) To 4345.00 ft (KB) (TVD)**

Reference Elevations: 3034.00 ft (KB)

Total Depth: 4345.00 ft (KB) (TVD)

3026.00 ft (CF)

Hole Diameter: 7.88 inches Hole Condition: Good

KB to GR/CF: 8.00 ft

**Serial #: 8845 Outside**

Press@RunDepth: 26.38 psig @ 4315.00 ft (KB)

Capacity: 8000.00 psig

Start Date: 2017.11.13

End Date: 2017.11.13

Last Calib.: 2017.11.13

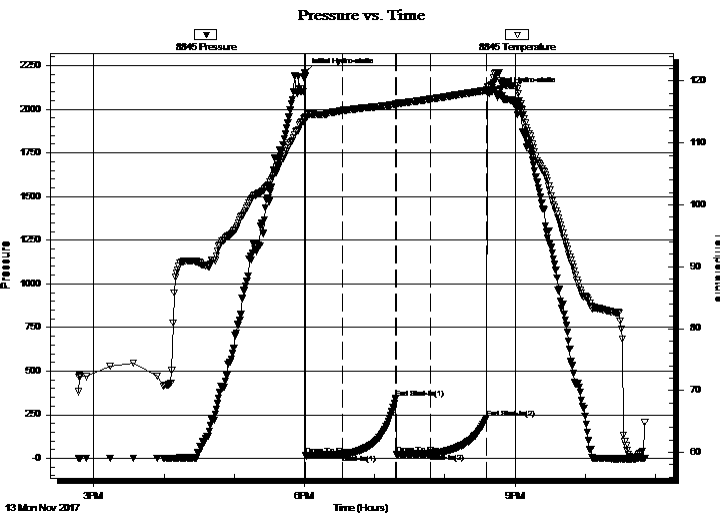
Start Time: 14:47:05

End Time: 22:50:59

Time On Btm: 2017.11.13 @ 18:00:30

Time Off Btm: 2017.11.13 @ 20:37:00

**TEST COMMENT:** IF: 2" blow .  
IS: No return  
FF: 1/2" blow .  
FS: No return.



## PRESSURE SUMMARY

Time (Min.)	Pressure (psig)	Temp (deg F)	Annotation
0	2210.56	113.98	Initial Hydro-static
1	15.72	113.70	Open To Flow (1)
33	20.91	115.26	Shut-In(1)
78	345.16	116.25	End Shut-In(1)
78	21.31	116.22	Open To Flow (2)
108	26.38	117.08	Shut-In(2)
156	229.90	118.51	End Shut-In(2)
157	2103.32	119.03	Final Hydro-static

## Recovery

Length (ft)	Description	Volume (bbl)
20.00	ocm 15o 85m	0.15

\* Recovery from multiple tests

## Gas Rates

Choke (inches)	Pressure (psig)	Gas Rate (Mcf/d)



**TRILOBITE TESTING, INC.**

## DRILL STEM TEST REPORT

Downing Nelson Oil Co, Inc

**29-9s-31w Thomas, KS**

PO Box 1019  
Hays, KS 67601

**Albers #1-29**

Job Ticket: 64379

**DST#: 2**

ATTN: Mark Downing

Test Start: 2017.11.13 @ 14:47:00

### GENERAL INFORMATION:

Formation: **LKC L**

Deviated: No Whipstock: ft (KB)

Time Tool Opened: 18:01:00

Time Test Ended: 22:51:00

Test Type: Conventional Bottom Hole (Reset)

Tester: Bradley Walter

Unit No: 78

**Interval: 4314.00 ft (KB) To 4345.00 ft (KB) (TVD)**

Reference Elevations: 3034.00 ft (KB)

Total Depth: 4345.00 ft (KB) (TVD)

3026.00 ft (CF)

Hole Diameter: 7.88 inches Hole Condition: Good

KB to GR/CF: 8.00 ft

**Serial #: 8365**

**Inside**

Press@RunDepth: psig @ 4315.00 ft (KB)

Capacity: 8000.00 psig

Start Date: 2017.11.13

End Date:

2017.11.13

Last Calib.:

2017.11.13

Start Time: 14:47:05

End Time:

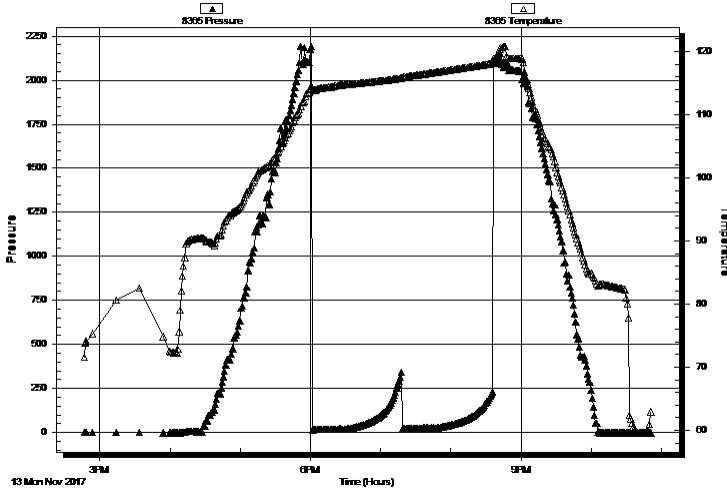
22:50:59

Time On Btm:

Time Off Btm:

TEST COMMENT: IF: 2" blow .  
IS: No return  
FF: 1/2" blow .  
FS: No return.

Pressure vs. Time



### PRESSURE SUMMARY

Time (Min.)	Pressure (psig)	Temp (deg F)	Annotation

### Recovery

Length (ft)	Description	Volume (bbl)
20.00	ocm 15o 85m	0.15

### Gas Rates

	Choke (inches)	Pressure (psig)	Gas Rate (Mcf/d)

\* Recovery from multiple tests



**TRILOBITE  
TESTING, INC.**

# DRILL STEM TEST REPORT

**TOOL DIAGRAM**

Dow ning Nelson Oil Co, Inc

**29-9s-31w Thomas,KS**

PO Box 1019  
Hays, KS 67601

**Albers #1-29**

Job Ticket: 64379

**DST#: 2**

ATTN: Mark Dow ning

Test Start: 2017.11.13 @ 14:47:00

## Tool Information

Drill Pipe:	Length: 4005.00 ft	Diameter: 3.80 inches	Volume: 56.18 bbl	Tool Weight:	2000.00 lb
Heavy Wt. Pipe:	Length: 311.00 ft	Diameter: 2.75 inches	Volume: 2.28 bbl	Weight set on Packer:	25000.00 lb
Drill Collar:	Length: 0.00 ft	Diameter: 2.25 inches	Volume: 0.00 bbl	Weight to Pull Loose:	90000.00 lb
			<u>Total Volume: 58.46 bbl</u>	Tool Chased	5.00 ft
Drill Pipe Above KB:	22.00 ft			String Weight: Initial	62000.00 lb
Depth to Top Packer:	4314.00 ft			Final	62000.00 lb
Depth to Bottom Packer:	ft				
Interval betw een Packers:	31.00 ft				
Tool Length:	51.00 ft				
Number of Packers:	2	Diameter: 6.75 inches			
Tool Comments:					

## Tool Description

Tool Description	Length (ft)	Serial No.	Position	Depth (ft)	Accum. Lengths
Change Over Sub	1.00			4295.00	
Shut In Tool	5.00			4300.00	
Hydraulic tool	5.00			4305.00	
Packer	5.00			4310.00	20.00 Bottom Of Top Packer
Packer	4.00			4314.00	
Stubb	1.00			4315.00	
Recorder	0.00	8365	Inside	4315.00	
Recorder	0.00	8845	Outside	4315.00	
Perforations	27.00			4342.00	
Bullnose	3.00			4345.00	31.00 Bottom Packers & Anchor
<b>Total Tool Length:</b>	<b>51.00</b>				



**TRILOBITE  
TESTING, INC.**

# DRILL STEM TEST REPORT

**FLUID SUMMARY**

Dow ning Nelson Oil Co, Inc

**29-9s-31w Thomas,KS**

PO Box 1019  
Hays, KS 67601

**Albers #1-29**

Job Ticket: 64379

**DST#: 2**

ATTN: Mark Dow ning

Test Start: 2017.11.13 @ 14:47:00

## Mud and Cushion Information

Mud Type: Gel Chem

Cushion Type:

Oil API:

0 deg API

Mud Weight: 9.00 lb/gal

Cushion Length:

ft

Water Salinity:

0 ppm

Viscosity: 50.00 sec/qt

Cushion Volume:

bbbl

Water Loss: 7.99 in<sup>3</sup>

Gas Cushion Type:

Resistivity: ohm.m

Gas Cushion Pressure:

psig

Salinity: 2000.00 ppm

Filter Cake: 1.00 inches

## Recovery Information

Recovery Table

Length ft	Description	Volume bbbl
20.00	ocm 15o 85m	0.147

Total Length: 20.00 ft      Total Volume: 0.147 bbl

Num Fluid Samples: 0

Num Gas Bombs: 0

Serial #:

Laboratory Name:

Laboratory Location:

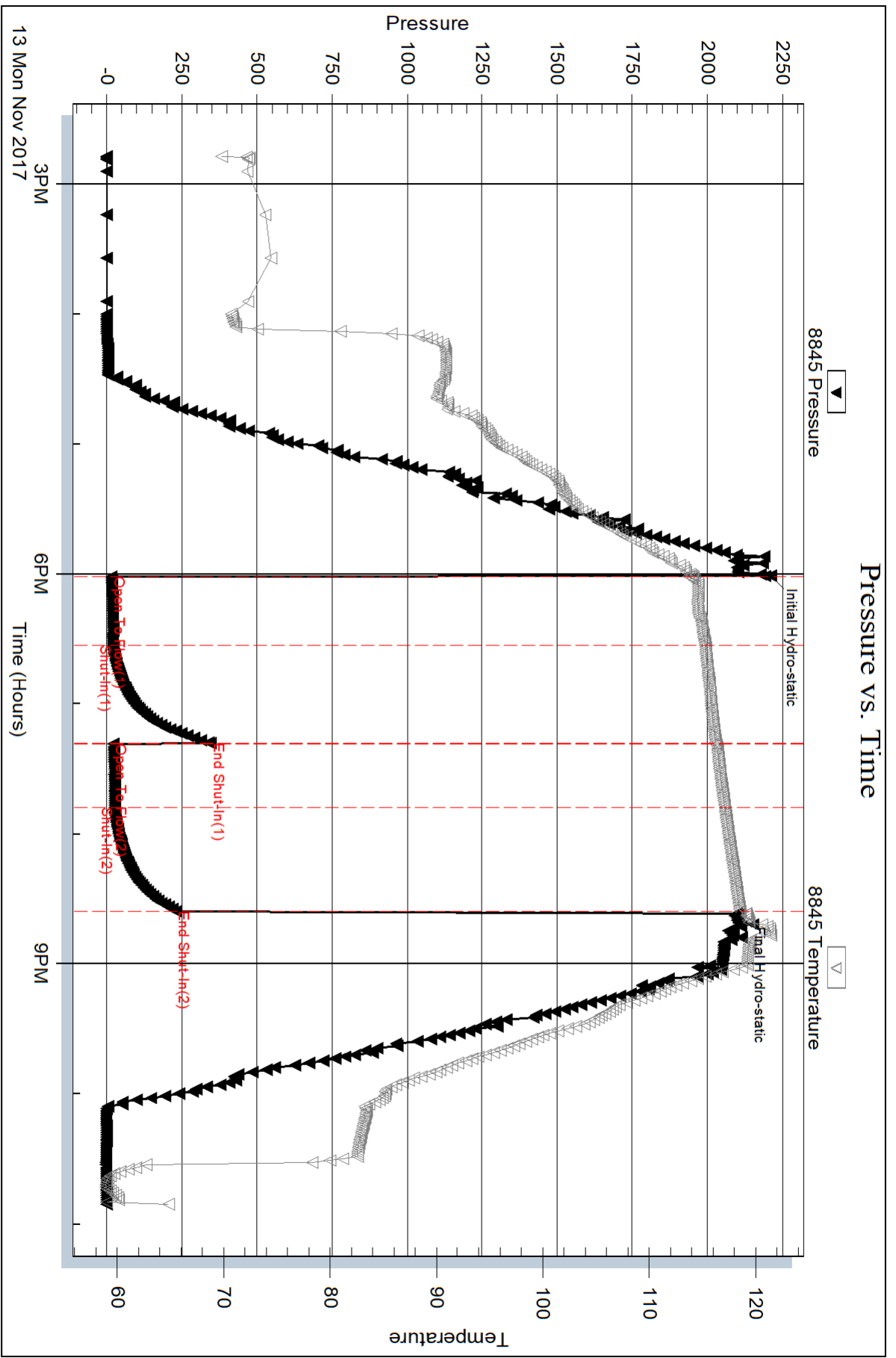
Recovery Comments:

Serial #: 8845

Outside Downing Nelson Oil Co, Inc

Albers #1-29

DST Test Number: 2



Triobite Testing, Inc

Ref. No: 64379

Printed: 2017.11.16 @ 10:22:32

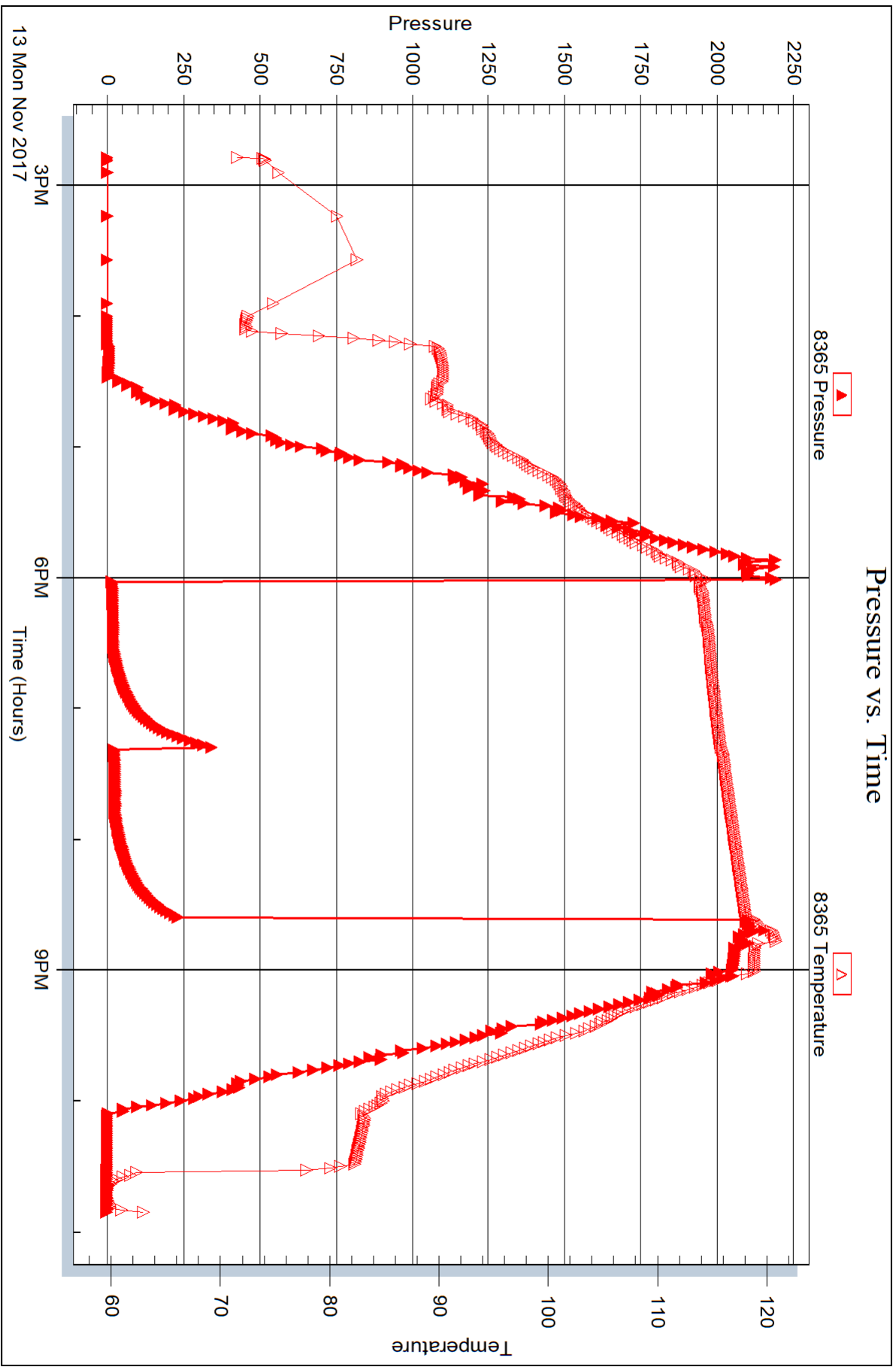
Serial #: 8365

Inside

Downing Nelson Oil Co, Inc

Albers #1-29

DST Test Number: 2



Trilobite Testing, Inc

Ref. No: 64379

Printed: 2017.11.16 @ 10:22:32



## DRILL STEM TEST REPORT

Prepared For: **Downing Nelson Oil Co, Inc**

PO Box 1019  
Hays, KS 67601

ATTN: Mark Downing

### **Albers #1-29**

### **29-9s-31w Thomas,KS**

Start Date: 2017.11.14 @ 16:57:00

End Date: 2017.11.15 @ 01:34:45

Job Ticket #: 64380                      DST #: 3

Trilobite Testing, Inc

PO Box 362 Hays, KS 67601

ph: 785-625-4778 fax: 785-625-5620

Printed: 2017.11.16 @ 10:21:54

Downing Nelson Oil Co, Inc  
29-9s-31w Thomas,KS  
Albers #1-29  
DST # 3  
Pawnee  
2017.11.14



**TRILOBITE  
TESTING, INC.**

# DRILL STEM TEST REPORT

Dow ning Nelson Oil Co, Inc

**29-9s-31w Thomas,KS**

PO Box 1019  
Hays, KS 67601

**Albers #1-29**

Job Ticket: 64380

**DST#: 3**

ATTN: Mark Dow ning

Test Start: 2017.11.14 @ 16:57:00

## GENERAL INFORMATION:

Formation: **Pawnee**

Deviated: No Whipstock: ft (KB)

Time Tool Opened: 19:50:15

Time Test Ended: 01:34:45

Test Type: Conventional Bottom Hole (Reset)

Tester: Bradley Walter

Unit No: 78

**Interval: 4425.00 ft (KB) To 4477.00 ft (KB) (TVD)**

Reference Elevations: 3034.00 ft (KB)

Total Depth: 4477.00 ft (KB) (TVD)

3026.00 ft (CF)

Hole Diameter: 7.88 inches Hole Condition: Good

KB to GR/CF: 8.00 ft

**Serial #: 8845 Outside**

Press@RunDepth: 42.06 psig @ 4426.00 ft (KB)

Capacity: 8000.00 psig

Start Date: 2017.11.14

End Date:

2017.11.15

Last Calib.: 2017.11.15

Start Time: 16:57:05

End Time:

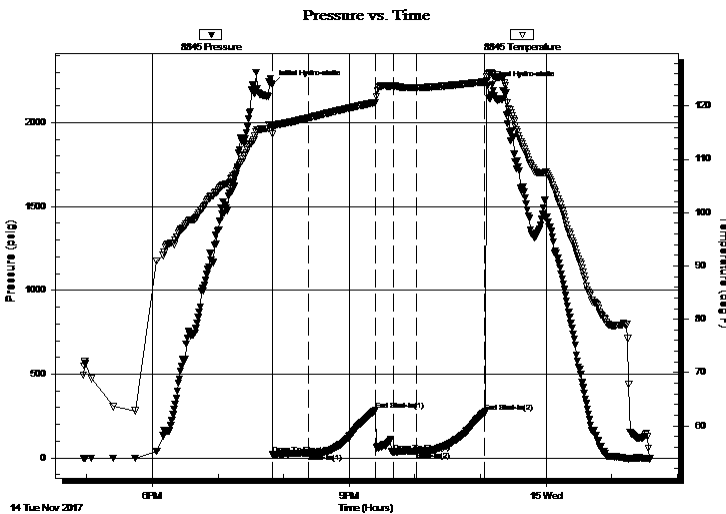
01:34:45

Time On Btm: 2017.11.14 @ 19:49:30

Time Off Btm: 2017.11.14 @ 23:06:45

TEST COMMENT: IF: 3" blow .  
IS: No return,  
FF: Surface blow .  
FS: No return.

## PRESSURE SUMMARY



Time (Min.)	Pressure (psig)	Temp (deg F)	Annotation
0	2225.71	116.25	Initial Hydro-static
1	19.54	115.88	Open To Flow (1)
33	30.11	117.74	Shut-In(1)
95	287.69	120.65	End Shut-In(1)
111	32.21	123.81	Open To Flow (2)
133	42.06	123.42	Shut-In(2)
195	273.81	124.51	End Shut-In(2)
198	2220.57	125.92	Final Hydro-static

## Recovery

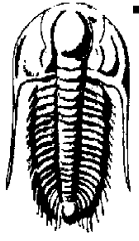
Length (ft)	Description	Volume (bbl)
45.00	socm 2o 98m	0.33

## Gas Rates

Choke (inches)	Pressure (psig)	Gas Rate (Mcf/d)

\* Recovery from multiple tests





**TRILOBITE  
TESTING, INC.**

# DRILL STEM TEST REPORT

Dow ning Nelson Oil Co, Inc

**29-9s-31w Thomas,KS**

PO Box 1019  
Hays, KS 67601

**Albers #1-29**

Job Ticket: 64380

**DST#: 3**

ATTN: Mark Dow ning

Test Start: 2017.11.14 @ 16:57:00

## GENERAL INFORMATION:

Formation: **Pawnee**

Deviated: No Whipstock: ft (KB)

Time Tool Opened: 19:50:15

Time Test Ended: 01:34:45

Test Type: Conventional Bottom Hole (Reset)

Tester: Bradley Walter

Unit No: 78

**Interval: 4425.00 ft (KB) To 4477.00 ft (KB) (TVD)**

Reference Elevations: 3034.00 ft (KB)

Total Depth: 4477.00 ft (KB) (TVD)

3026.00 ft (CF)

Hole Diameter: 7.88 inches Hole Condition: Good

KB to GR/CF: 8.00 ft

**Serial #: 8365 Inside**

Press@RunDepth: psig @ 4426.00 ft (KB)

Capacity: 8000.00 psig

Start Date: 2017.11.14

End Date: 2017.11.15

Last Calib.: 2017.11.15

Start Time: 16:57:05

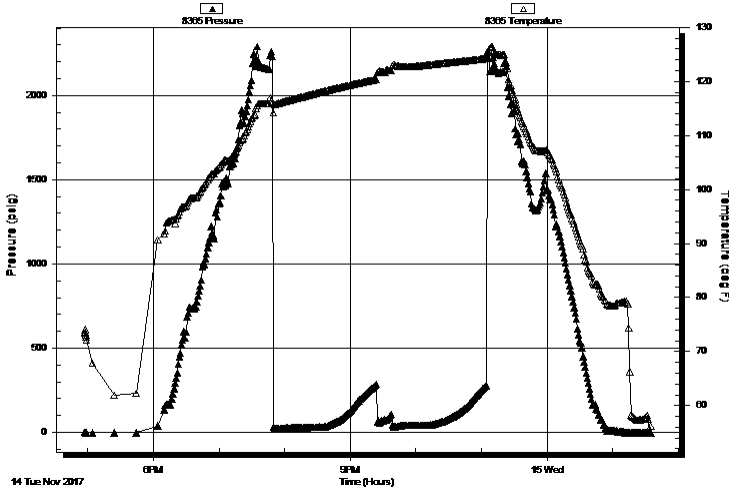
End Time: 01:34:45

Time On Btm:

Time Off Btm:

TEST COMMENT: IF: 3" blow .  
IS: No return,  
FF: Surface blow .  
FS: No return.

Pressure vs. Time



## PRESSURE SUMMARY

Time (Min.)	Pressure (psig)	Temp (deg F)	Annotation

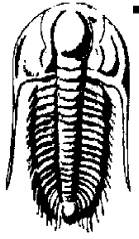
## Recovery

Length (ft)	Description	Volume (bbl)
45.00	socm 2o 98m	0.33

## Gas Rates

	Choke (inches)	Pressure (psig)	Gas Rate (Mcf/d)

\* Recovery from multiple tests



**TRILOBITE  
TESTING, INC.**

# DRILL STEM TEST REPORT

**TOOL DIAGRAM**

Dow ning Nelson Oil Co, Inc

**29-9s-31w Thomas,KS**

PO Box 1019  
Hays, KS 67601

**Albers #1-29**

Job Ticket: 64380

**DST#: 3**

ATTN: Mark Dow ning

Test Start: 2017.11.14 @ 16:57:00

## Tool Information

Drill Pipe:	Length: 4100.00 ft	Diameter: 3.80 inches	Volume: 57.51 bbl	Tool Weight:	2000.00 lb
Heavy Wt. Pipe:	Length: 311.00 ft	Diameter: 2.75 inches	Volume: 2.28 bbl	Weight set on Packer:	25000.00 lb
Drill Collar:	Length: 0.00 ft	Diameter: 2.25 inches	Volume: 0.00 bbl	Weight to Pull Loose:	85000.00 lb
			<u>Total Volume: 59.79 bbl</u>	Tool Chased	0.00 ft
Drill Pipe Above KB:	13.00 ft			String Weight: Initial	62000.00 lb
Depth to Top Packer:	4425.00 ft			Final	62000.00 lb
Depth to Bottom Packer:	ft				
Interval betw een Packers:	52.00 ft				
Tool Length:	79.00 ft				
Number of Packers:	2	Diameter: 6.75 inches			
Tool Comments:					

## Tool Description

Tool Description	Length (ft)	Serial No.	Position	Depth (ft)	Accum. Lengths
Change Over Sub	1.00			4399.00	
Shut In Tool	5.00			4404.00	
Hydraulic tool	5.00			4409.00	
Jars	5.00			4414.00	
Safety Joint	2.00			4416.00	
Packer	5.00			4421.00	27.00 Bottom Of Top Packer
Packer	4.00			4425.00	
Stubb	1.00			4426.00	
Recorder	0.00	8365	Inside	4426.00	
Recorder	0.00	8845	Outside	4426.00	
Perforations	15.00			4441.00	
Change Over Sub	1.00			4442.00	
Drill Pipe	31.00			4473.00	
Change Over Sub	1.00			4474.00	
Bullnose	3.00			4477.00	52.00 Bottom Packers & Anchor

**Total Tool Length: 79.00**



**TRILOBITE  
TESTING, INC.**

# DRILL STEM TEST REPORT

**FLUID SUMMARY**

Dow ning Nelson Oil Co, Inc

**29-9s-31w Thomas,KS**

PO Box 1019  
Hays, KS 67601

**Albers #1-29**

Job Ticket: 64380

**DST#: 3**

ATTN: Mark Dow ning

Test Start: 2017.11.14 @ 16:57:00

## Mud and Cushion Information

Mud Type: Gel Chem

Cushion Type:

Oil API:

0 deg API

Mud Weight: 9.00 lb/gal

Cushion Length:

ft

Water Salinity:

0 ppm

Viscosity: 50.00 sec/qt

Cushion Volume:

bbbl

Water Loss: 7.59 in<sup>3</sup>

Gas Cushion Type:

Resistivity: ohm.m

Gas Cushion Pressure:

psig

Salinity: 2000.00 ppm

Filter Cake: 1.00 inches

## Recovery Information

Recovery Table

Length ft	Description	Volume bbl
45.00	socm 2o 98m	0.331

Total Length: 45.00 ft      Total Volume: 0.331 bbl

Num Fluid Samples: 0

Num Gas Bombs: 0

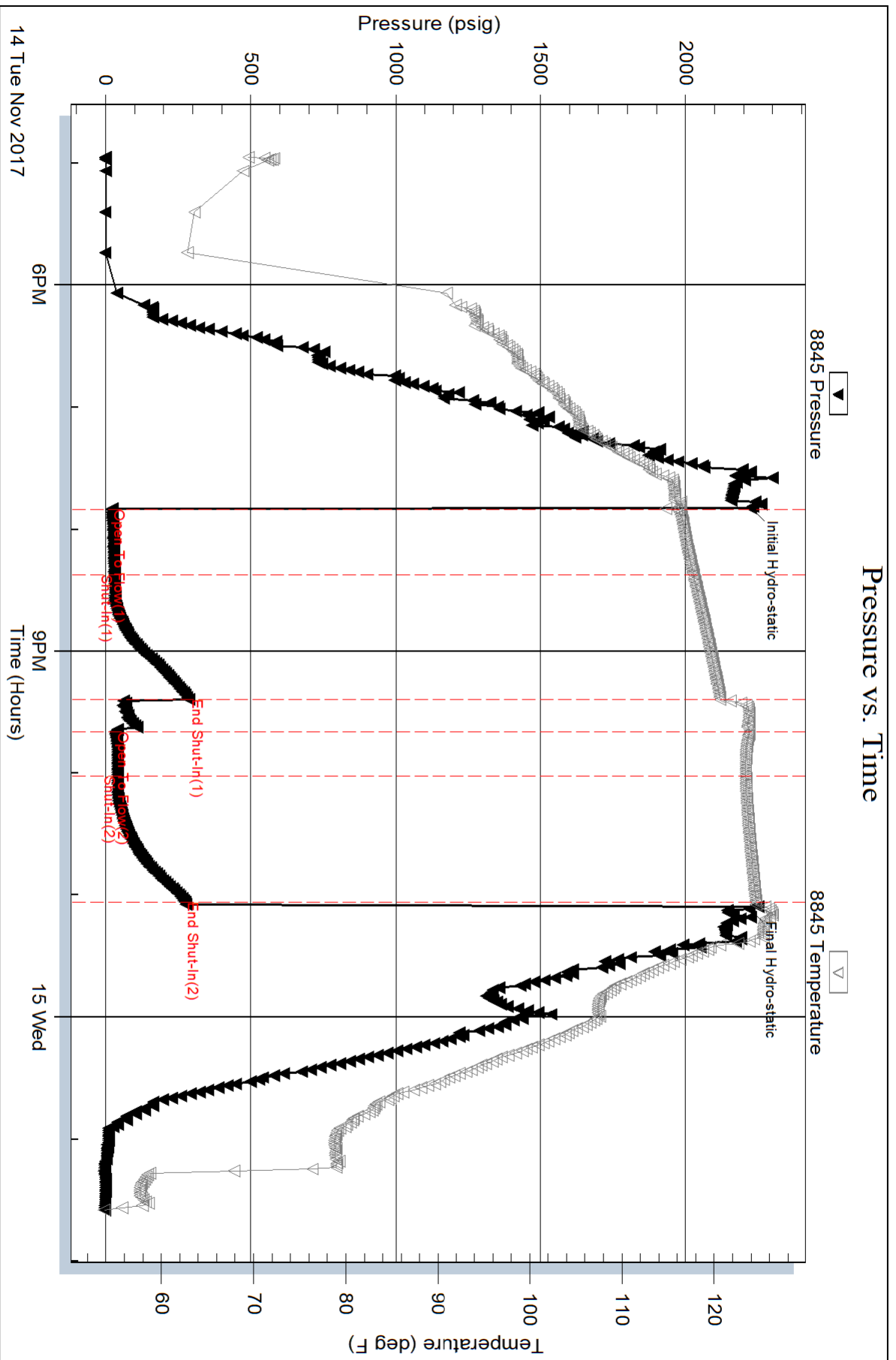
Serial #:

Laboratory Name:

Laboratory Location:

Recovery Comments:

# Pressure vs. Time



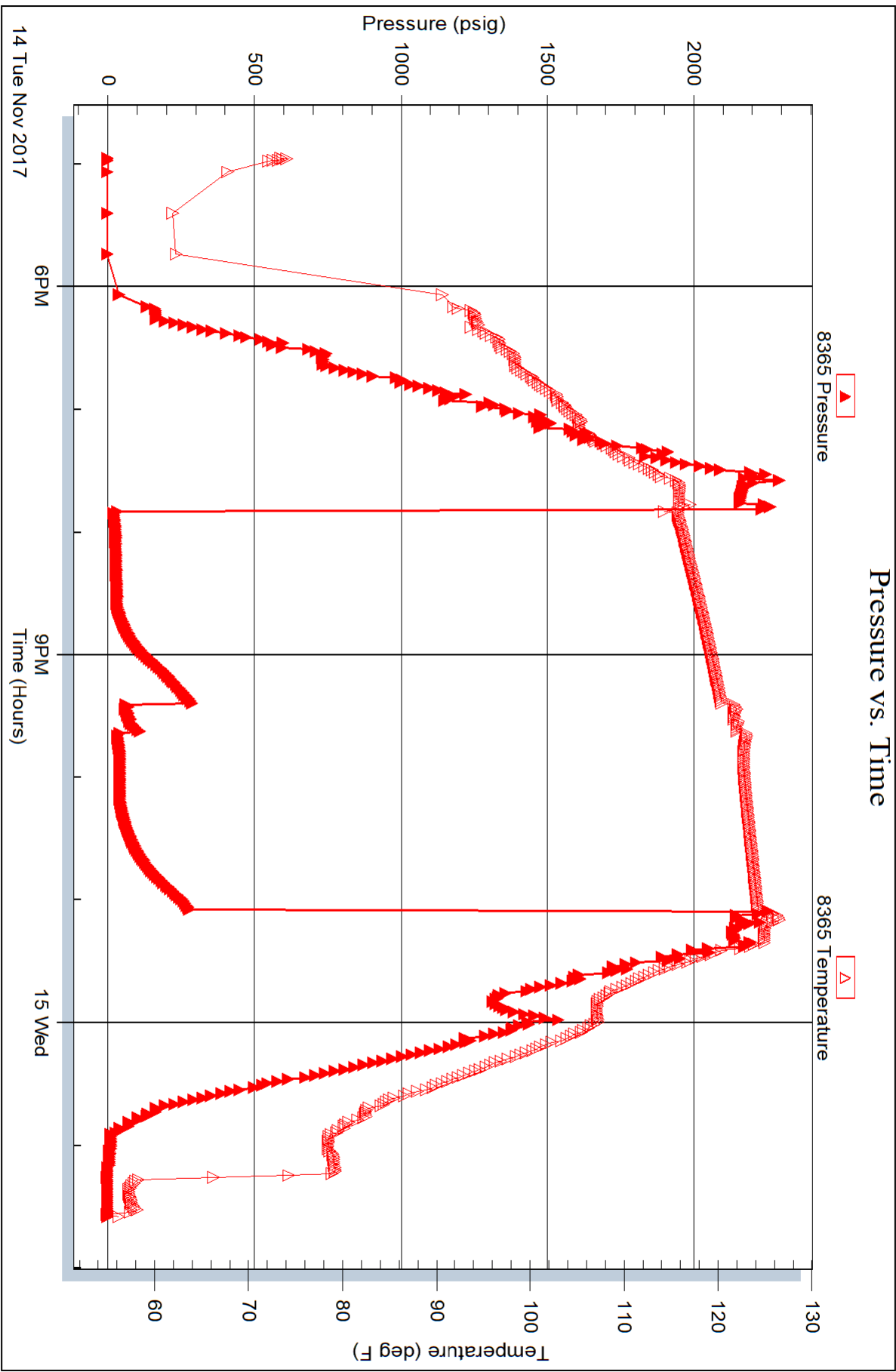
Serial #: 8365

Inside

Downing Nelson Oil Co, Inc

Albers #1-29

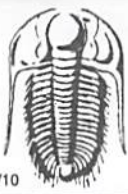
DST Test Number: 3



Trilobite Testing, Inc

Ref. No: 64380

Printed: 2017.11.16 @ 10:21:55



# TRILOBITE TESTING INC.

1515 Commerce Parkway • Hays, Kansas 67601

## Test Ticket

NO. **64378**

Well Name & No. Albers #1-29 Test No. 1 Date 11/13/17  
 Company Dawning Nelson Oil Co, Inc Elevation 3034 KB 3026 GL  
 Address PO Box 1019 Hays, Ks 67601  
 Co. Rep / Geo. Mark Dawning Rig Discovery #1  
 Location: Sec. 29 Twp. 9 S Rge. 31 W Co. Thomas State Ks

Interval Tested 4194 - 4287 Zone Tested LKC H-J  
 Anchor Length 93 Drill Pipe Run 3880 Mud Wt. 9.3  
 Top Packer Depth 4189 Drill Collars Run 0 Vis 50  
 Bottom Packer Depth 4194 Wt. Pipe Run 311 WL 8.0  
 Total Depth 4287 Chlorides 2,000 ppm System LCM 1/2 #

Blow Description IF : 9" blow  
ISI : No return.  
FF : 8" blow  
FSI : No return.

Rec	Feet of	%gas	%oil	%water	%mud
<u>10</u>	<u>OTL</u>	<u>100</u>			
<u>240</u>	<u>mcw oil spots</u>			<u>60</u>	<u>40</u>

Rec Total 250 BHT 128 Gravity 34 API RW 35 @ 57 °F Chlorides 26000 ppm

(A) Initial Hydrostatic 2081  Test 1150 T-On Location 1545  
 (B) First Initial Flow 18  Jars No T-Started 2046  
 (C) First Final Flow 74  Safety Joint No T-Open 2236  
 (D) Initial Shut-In 1170  Circ Sub N/c T-Pulled 0136  
 (E) Second Initial Flow 82  Hourly Standby \_\_\_\_\_ T-Out 0414  
 (F) Second Final Flow 132  Mileage 132 RT <sup>99</sup> Comments \_\_\_\_\_  
 (G) Final Shut-In 1168  Sampler \_\_\_\_\_  
 (H) Final Hydrostatic 2073  Straddle \_\_\_\_\_  
 Shale Packer \_\_\_\_\_  
 Extra Packer \_\_\_\_\_  
 Extra Recorder \_\_\_\_\_  
 Day Standby \_\_\_\_\_  
 Accessibility \_\_\_\_\_  
 Sub Total 1249

Ruined Shale Packer \_\_\_\_\_  
 Ruined Packer \_\_\_\_\_  
 Extra Copies \_\_\_\_\_  
 Sub Total 0  
 Total 1249.00  
 MP/DST Disc't \_\_\_\_\_

Approved By \_\_\_\_\_ Our Representative

Trilobite Testing Inc. shall not be liable for damaged of any kind of the property or personnel of the one for whom a test is made, or for any loss suffered or sustained, directly or indirectly, through the use of its equipment, or its statements or opinion concerning the results of any test, tools lost or damaged in the hole shall be paid for at cost by the party for whom the test is made.



# TRILOBITE TESTING INC.

1515 Commerce Parkway • Hays, Kansas 67601

## Test Ticket

NO. **64379**

Well Name & No. Albers #1-29 Test No. 2 Date 11/13/2017  
 Company Downing Nelson Oil Co, Inc Elevation 3034 KB 3026 GL  
 Address PO Box 1019 Hays KS 67601  
 Co. Rep / Geo. Mark Downing Rig Discovery #1  
 Location: Sec. 29 Twp. 9S Rge. 31W Co. Thomas State KS

Interval Tested 4314-4345 Zone Tested LKC L  
 Anchor Length 31 Drill Pipe Run 4005 Mud Wt. 9.2  
 Top Packer Depth 4309 Drill Collars Run 311 Vis 50  
 Bottom Packer Depth 4314 Wt. Pipe Run Ø WL 8.0  
 Total Depth 4345 Chlorides 2000 ppm System LCM 1 1/2 #  
 Blow Description IF: 2" blow  
ISI: No return.  
FF: 1/2" blow  
FSI: No return.

Rec	Feet of	%gas	%oil	%water	%mud
<u>20</u>	<u>OCN</u>	<u>15</u>		<u>85</u>	

Rec Total 20 BHT 119 Gravity — API RW — @ — °F Chlorides — ppm

(A) Initial Hydrostatic 211  Test 1150 T-On Location 1430  
 (B) First Initial Flow 16  Jars — T-Started 1447  
 (C) First Final Flow 21  Safety Joint — T-Open 1802  
 (D) Initial Shut-In 345  Circ Sub N/C T-Pulled 2032  
 (E) Second Initial Flow 21  Hourly Standby — T-Out 2251  
 (F) Second Final Flow 26  Mileage 132 RT 99 Comments —  
 (G) Final Shut-In 230  Sampler —  
 (H) Final Hydrostatic 2103  Straddle —  
 Shale Packer —  
 Extra Packer —  
 Extra Recorder —  
 Day Standby —  
 Accessibility —  
 Sub Total 1249

Initial Open 30  
 Initial Shut-In 45  
 Final Flow 30  
 Final Shut-In 45

Sub Total 0  
 Total 1249.00  
 MP/DST Disc't —

Approved By \_\_\_\_\_ Our Representative [Signature]

TriLOBite Testing Inc. shall not be liable for damaged of any kind of the property or personnel of the one for whom a test is made, or for any loss suffered or sustained, directly or indirectly, through the use of its equipment, or its statements or opinion concerning the results of any test, tools lost or damaged in the hole shall be paid for at cost by the party for whom the test is made.



# TRILOBITE TESTING INC.

1515 Commerce Parkway • Hays, Kansas 67601

## Test Ticket

NO. **64380**

Well Name & No. Albers # 1-29 Test No. 3 Date 11/14/2017  
 Company Downing Nelson Oil Co, Inc Elevation 3034 KB 3026 GL  
 Address PO Box 1019 Hays, KS 67601  
 Co. Rep / Geo. Mark Downing Rig Discovery #1  
 Location: Sec. 29 Twp. 9S Rge. 3W Co. Thomas State KS

Interval Tested 4425 - 4477 Zone Tested Pawnee  
 Anchor Length 52' Drill Pipe Run 4100 Mud Wt. 9.3  
 Top Packer Depth 4420 Drill Collars Run Ø Vis 50  
 Bottom Packer Depth 4425 Wt. Pipe Run 311 WL 7.6  
 Total Depth 4477 Chlorides 2000 ppm System LCM 1#

Blow Description IF! 3" blow  
IST! No return.  
FF! Surface blow  
FST! No return.

Rec	Feet of	%gas	%oil	%water	%mud				
<u>45</u>	<u>50cm</u>		<u>2</u>		<u>8</u>				
Rec	Feet of	%gas	%oil	%water	%mud				
Rec	Feet of	%gas	%oil	%water	%mud				
Rec	Feet of	%gas	%oil	%water	%mud				
Rec	Feet of	%gas	%oil	%water	%mud				
Rec Total	<u>45</u>	BHT	<u>126</u>	Gravity	API RW	@	°F	Chlorides	ppm

(A) Initial Hydrostatic 2226  
 (B) First Initial Flow 20  
 (C) First Final Flow 30  
 (D) Initial Shut-In 288  
 (E) Second Initial Flow 32  
 (F) Second Final Flow 42  
 (G) Final Shut-In 274  
 (H) Final Hydrostatic 2221

Gravity — API RW — @ — °F Chlorides — ppm  
 Test 1150  
 Jars used 250  
 Safety Joint 75  
 Circ Sub 4/C  
 Hourly Standby  
 Mileage 132 RT X2 99+99  
 Sampler  
 Straddle  
 Shale Packer  
 Extra Packer  
 Extra Recorder  
 Day Standby  
 Accessibility  
 Sub Total 1673

T-On Location 1530  
 T-Started 1557  
 T-Open 1851  
 T-Pulled 2151  
 T-Out 2135 1/15

Comments Pu tool @ 0230  
1/16

Ruined Shale Packer  
 Ruined Packer  
 Extra Copies  
 Sub Total 0  
 Total 1673.00

Initial Open 45  
 Initial Shut-In 45  
 Final Flow 45  
 Final Shut-In 45

MP/DST Disc't

Approved By

Our Representative

TriLOBITE Testing Inc. shall not be liable for damaged of any kind of the property or personnel of the one for whom a test is made, or for any loss suffered or sustained, directly or indirectly, through the use of its equipment, or its statements or opinion concerning the results of any test, tools lost or damaged in the hole shall be paid for at cost by the party for whom the test is made.