



**TRILOBITE TESTING, INC.**

# DRILL STEM TEST REPORT

Triple Crown Operating, LLC

**30 17s 24w Ness, Ks**

2201 S Utica Pl. Ste 100  
Tulsa, Ok 74114

**Keilman 1-A**

Job Ticket: 61367

**DST#: 1**

ATTN: Sean Deenihan

Test Start: 2017.06.10 @ 15:56:00

## GENERAL INFORMATION:

Formation: **Mississippian**

Deviated: No Whipstock: ft (KB)

Time Tool Opened: 18:38:30

Time Test Ended: 23:16:45

Test Type: Conventional Bottom Hole (Initial)

Tester: Bradley Walter

Unit No: 78

**Interval: 4296.00 ft (KB) To 4395.00 ft (KB) (TVD)**

Reference Elevations: 2387.00 ft (KB)

Total Depth: 4345.00 ft (KB) (TVD)

2382.00 ft (CF)

Hole Diameter: 7.88 inches Hole Condition: Good

KB to GR/CF: 5.00 ft

**Serial #: 8845 Outside**

Press@RunDepth: 59.02 psig @ 4297.00 ft (KB)

Capacity: 8000.00 psig

Start Date: 2017.06.10

End Date: 2017.06.10

Last Calib.: 2017.06.10

Start Time: 15:56:05

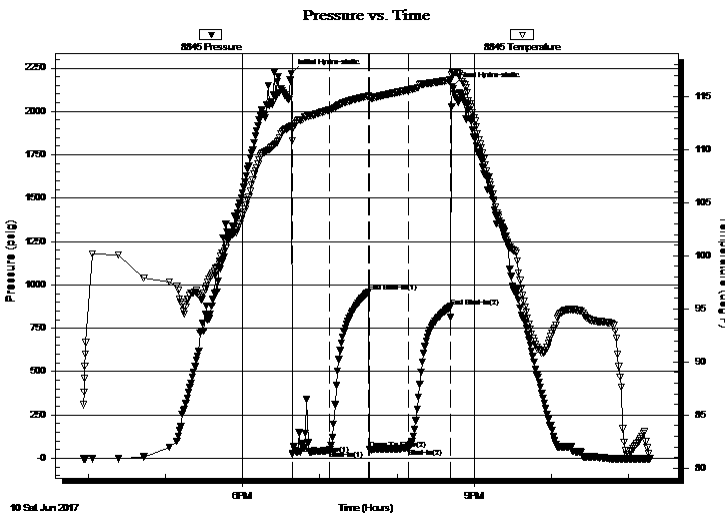
End Time: 23:16:44

Time On Btm: 2017.06.10 @ 18:38:00

Time Off Btm: 2017.06.10 @ 20:43:15

**TEST COMMENT:** IF: 3" blow.  
IS: No return.  
FF: 2" blow.  
FS: No return.

## PRESSURE SUMMARY



Time (Min.)	Pressure (psig)	Temp (deg F)	Annotation
0	2217.06	112.21	Initial Hydro-static
1	23.50	110.80	Open To Flow (1)
30	44.78	113.73	Shut-In(1)
60	959.21	115.05	End Shut-In(1)
61	49.62	114.85	Open To Flow (2)
92	59.02	115.61	Shut-In(2)
124	874.33	116.55	End Shut-In(2)
126	2142.83	117.22	Final Hydro-static

## Recovery

Length (ft)	Description	Volume (bbl)
60.00	ocm 25o 75m	0.30
70.00	Oil 100o	0.43

## Gas Rates

	Choke (inches)	Pressure (psig)	Gas Rate (Mcf/d)



**TRILOBITE TESTING, INC.**

# DRILL STEM TEST REPORT

Triple Crown Operating, LLC

30 17s 24w Ness, Ks

2201 S Utica Pl. Ste 100  
Tulsa, Ok 74114

**Keilman 1-A**

Job Ticket: 61367

**DST#: 1**

ATTN: Sean Deenihan

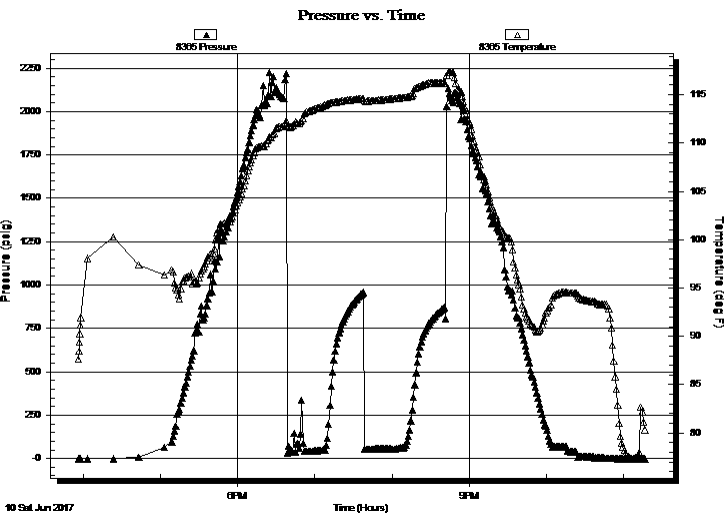
Test Start: 2017.06.10 @ 15:56:00

**GENERAL INFORMATION:**

Formation: **Mississippian**  
 Deviated: No Whipstock: ft (KB)  
 Time Tool Opened: 18:38:30  
 Time Test Ended: 23:16:45  
 Interval: **4296.00 ft (KB) To 4395.00 ft (KB) (TVD)**  
 Total Depth: 4345.00 ft (KB) (TVD)  
 Hole Diameter: 7.88 inches Hole Condition: Good  
 Test Type: Conventional Bottom Hole (Initial)  
 Tester: Bradley Walter  
 Unit No: 78  
 Reference Elevations: 2387.00 ft (KB)  
 2382.00 ft (CF)  
 KB to GR/CF: 5.00 ft

**Serial #: 8365** Inside  
 Press@RunDepth: psig @ 4297.00 ft (KB) Capacity: 8000.00 psig  
 Start Date: 2017.06.10 End Date: 2017.06.10 Last Calib.: 2017.06.10  
 Start Time: 15:56:05 End Time: 23:16:44 Time On Btm:  
 Time Off Btm:

TEST COMMENT: IF: 3" blow.  
 IS: No return.  
 FF: 2" blow.  
 FS: No return.



PRESSURE SUMMARY			
Time (Min.)	Pressure (psig)	Temp (deg F)	Annotation

Recovery		
Length (ft)	Description	Volume (bbl)
60.00	ocm 25o 75m	0.30
70.00	Oil 100o	0.43

Gas Rates			
	Choke (inches)	Pressure (psig)	Gas Rate (Mcf/d)



**TRILOBITE  
TESTING, INC.**

# DRILL STEM TEST REPORT

**FLUID SUMMARY**

Triple Crown Operating, LLC

**30 17s 24w Ness, Ks**

2201 S Utica Pl. Ste 100  
Tulsa, Ok 74114

**Keilman 1-A**

Job Ticket: 61367

**DST#: 1**

ATTN: Sean Deenihan

Test Start: 2017.06.10 @ 15:56:00

## Mud and Cushion Information

Mud Type: Gel Chem

Cushion Type:

Oil API:

37 deg API

Mud Weight: 9.00 lb/gal

Cushion Length:

ft

Water Salinity:

0 ppm

Viscosity: 60.00 sec/qt

Cushion Volume:

bbbl

Water Loss: 8.79 in<sup>3</sup>

Gas Cushion Type:

Resistivity: ohm.m

Gas Cushion Pressure:

psig

Salinity: 3000.00 ppm

Filter Cake: 1.00 inches

## Recovery Information

Recovery Table

Length ft	Description	Volume bbbl
60.00	ocm 25o 75m	0.295
70.00	Oil 100o	0.426

Total Length: 130.00 ft

Total Volume: 0.721 bbl

Num Fluid Samples: 0

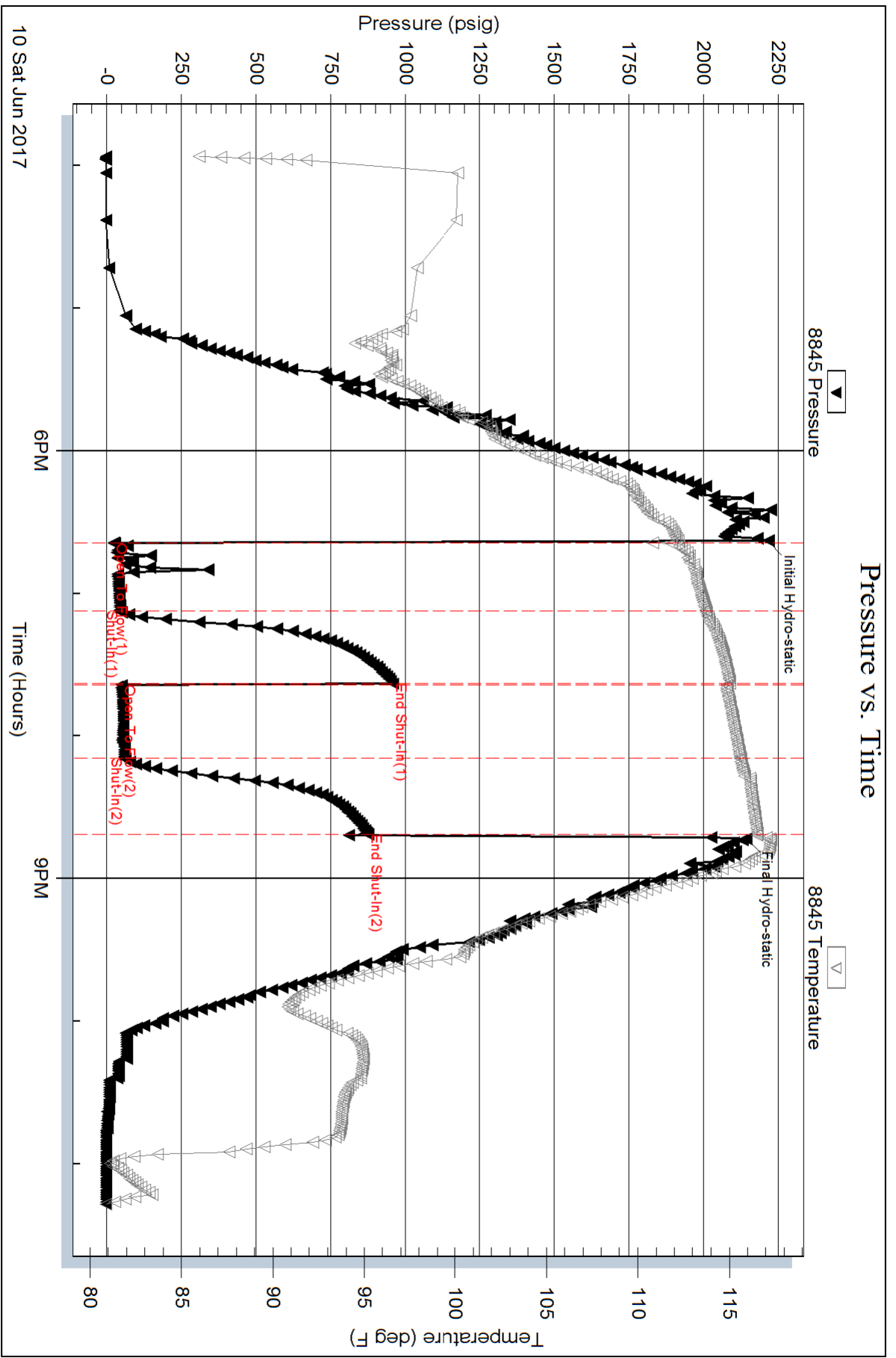
Num Gas Bombs: 0

Serial #:

Laboratory Name:

Laboratory Location:

Recovery Comments:



Serial #: 8365

Inside

Triple Crown Operating, LLC

Keilman 1-A

DST Test Number: 1

