



## DRILL STEM TEST REPORT

Prepared For: **American Warrior Inc.**

PO Box 399  
Garden City, KS 67846

ATTN: Jason Alm

**KT #1-25**

**25-20S-22W Ness,KS**

Start Date: 2017.11.16 @ 03:32:00

End Date: 2017.11.16 @ 09:10:02

Job Ticket #: 62084                      DST #: 1

Trilobite Testing, Inc  
1515 Commerce Parkway Hays, KS 67601  
ph: 785-625-4778 fax: 785-625-5620

Printed: 2017.11.20 @ 09:58:53



**TRILOBITE TESTING, INC.**

# DRILL STEM TEST REPORT

American Warrior Inc.  
 PO Box 399  
 Garden City, KS 67846  
 ATTN: Jason Alm

**25-20S-22W Ness,KS**  
**KT #1-25**  
 Job Ticket: 62084 **DST#: 1**  
 Test Start: 2017.11.16 @ 03:32:00

## GENERAL INFORMATION:

Formation: **Ft Scott**  
 Deviated: No Whipstock: ft (KB)  
 Test Type: Conventional Bottom Hole (Initial)  
 Time Tool Opened: 05:31:17 Tester: Ken Swinney  
 Time Test Ended: 09:10:02 Unit No: 72  
 Interval: **4210.00 ft (KB) To 4268.00 ft (KB) (TVD)** Reference Elevations: 2189.00 ft (KB)  
 Total Depth: 4268.00 ft (KB) (TVD) 2181.00 ft (CF)  
 Hole Diameter: 7.88 inches Hole Condition: Fair KB to GR/CF: 8.00 ft

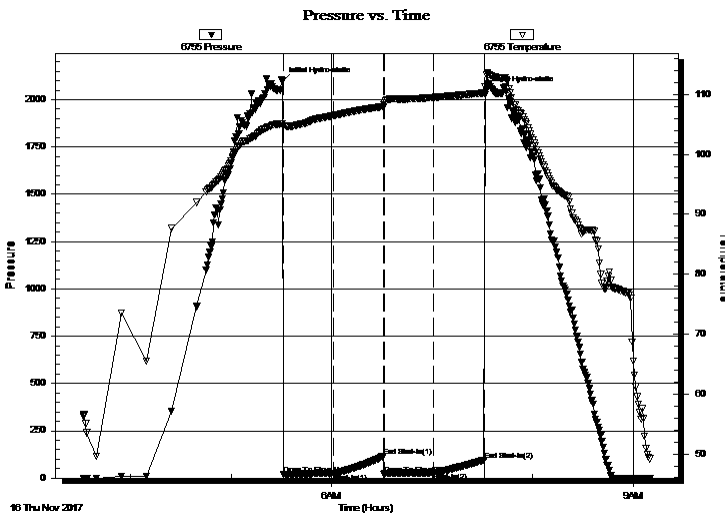
## Serial #: 6755

Inside

Press@RunDepth: 28.98 psig @ 4263.73 ft (KB) Capacity: psig  
 Start Date: 2017.11.16 End Date: 2017.11.16 Last Calib.: 2017.11.16  
 Start Time: 03:32:01 End Time: 09:10:02 Time On Btm: 2017.11.16 @ 05:30:47  
 Time Off Btm: 2017.11.16 @ 07:32:17

TEST COMMENT: IF 30 Minutes Blow built to 1"  
 IS 30 Minutes No blow back  
 FF 30 Minutes Blow built to 3"  
 FS 30 Minutes No blow back

## PRESSURE SUMMARY



Time (Min.)	Pressure (psig)	Temp (deg F)	Annotation
0	2097.62	105.12	Initial Hydro-static
1	17.91	104.81	Open To Flow (1)
31	24.86	106.47	Shut-In(1)
61	114.98	108.02	End Shut-In(1)
61	18.08	108.22	Open To Flow (2)
90	28.98	109.50	Shut-In(2)
121	96.43	110.28	End Shut-In(2)
122	2047.31	113.27	Final Hydro-static

## Recovery

Length (ft)	Description	Volume (bbl)
30.00	Mud with show of oil/ Mud 100%	0.15

## Gas Rates

Choke (inches)	Pressure (psig)	Gas Rate (Mcf/d)



**TRILOBITE TESTING, INC.**

# DRILL STEM TEST REPORT

American Warrior Inc.  
 PO Box 399  
 Garden City, KS 67846  
 ATTN: Jason Alm

**25-20S-22W Ness, KS**  
**KT #1-25**  
 Job Ticket: 62084 **DST#: 1**  
 Test Start: 2017.11.16 @ 03:32:00

## GENERAL INFORMATION:

Formation: **Ft Scott**  
 Deviated: No Whipstock: ft (KB)  
 Time Tool Opened: 05:31:17  
 Time Test Ended: 09:10:02  
 Interval: **4210.00 ft (KB) To 4268.00 ft (KB) (TVD)**  
 Total Depth: 4268.00 ft (KB) (TVD)  
 Hole Diameter: 7.88 inches Hole Condition: Fair  
 Test Type: Conventional Bottom Hole (Initial)  
 Tester: Ken Swinney  
 Unit No: 72  
 Reference Elevations: 2189.00 ft (KB)  
 2181.00 ft (CF)  
 KB to GR/CF: 8.00 ft

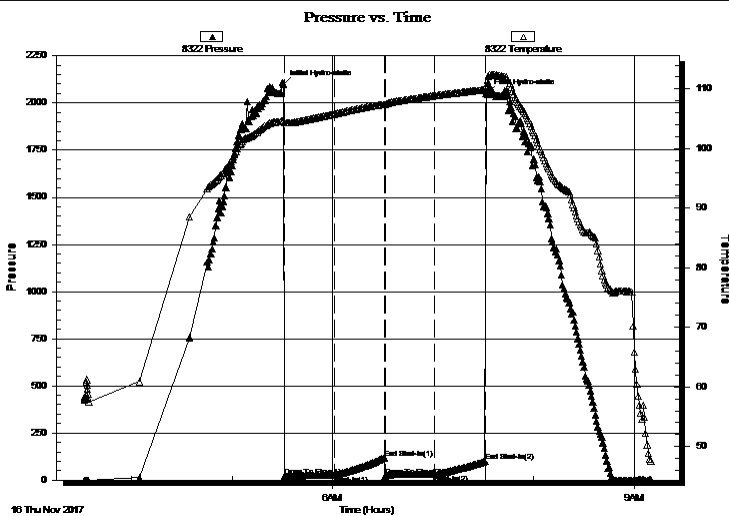
## Serial #: 8322 Outside

Press@RunDepth: 100.12 psig @ 4264.73 ft (KB) Capacity: psig  
 Start Date: 2017.11.16 End Date: 2017.11.16 Last Calib.: 2017.11.16  
 Start Time: 03:32:01 End Time: 09:10:02 Time On Btm: 2017.11.16 @ 05:30:47  
 Time Off Btm: 2017.11.16 @ 07:32:17

TEST COMMENT: IF 30 Minutes Blow built to 1"  
 IS 30 Minutes No blow back  
 FF 30 Minutes Blow built to 3"  
 FS 30 Minutes No blow back

## PRESSURE SUMMARY

Time (Min.)	Pressure (psig)	Temp (deg F)	Annotation
0	2099.59	104.64	Initial Hydro-static
1	19.83	104.30	Open To Flow (1)
31	27.66	105.81	Shut-In(1)
60	118.58	107.43	End Shut-In(1)
61	20.09	107.43	Open To Flow (2)
90	32.08	108.86	Shut-In(2)
121	100.12	109.88	End Shut-In(2)
122	2047.21	111.36	Final Hydro-static



## Recovery

Length (ft)	Description	Volume (bbl)
30.00	Mud w ith show of oil/ Mud 100%	0.15

## Gas Rates

Choke (inches)	Pressure (psig)	Gas Rate (Mcf/d)



**TRILOBITE  
TESTING, INC.**

# DRILL STEM TEST REPORT

**TOOL DIAGRAM**

American Warrior Inc.

**25-20S-22W Ness,KS**

PO Box 399  
Garden City, KS 67846

**KT #1-25**

Job Ticket: 62084

**DST#: 1**

ATTN: Jason Alm

Test Start: 2017.11.16 @ 03:32:00

## Tool Information

Drill Pipe:	Length: 4183.00 ft	Diameter: 3.80 inches	Volume: 58.68 bbl	Tool Weight: 2000.00 lb
Heavy Wt. Pipe:	Length: 0.00 ft	Diameter: 0.00 inches	Volume: 0.00 bbl	Weight set on Packer: 20000.00 lb
Drill Collar:	Length: 30.00 ft	Diameter: 2.25 inches	Volume: 0.15 bbl	Weight to Pull Loose: 82000.00 lb
			<u>Total Volume: 58.83 bbl</u>	Tool Chased 0.00 ft
Drill Pipe Above KB:	31.00 ft			String Weight: Initial 58000.00 lb
Depth to Top Packer:	4210.00 ft			Final 58000.00 lb
Depth to Bottom Packer:	ft			
Interval between Packers:	57.73 ft			
Tool Length:	85.73 ft			
Number of Packers:	2	Diameter: 6.75 inches		

Tool Comments:

## Tool Description

Tool Description	Length (ft)	Serial No.	Position	Depth (ft)	Accum. Lengths
Shut-In Tool	5.00			4187.00	
Hydraulic tool	5.00			4192.00	
Jars	6.00			4198.00	
Safety Joint	2.00			4200.00	
Top Packer	5.00			4205.00	
Packer	5.00			4210.00	28.00 Bottom Of Top Packer
Anchor	19.00			4229.00	
Change Over Sub	1.00			4230.00	
Drill Pipe	31.73			4261.73	
Change Over Sub	1.00			4262.73	
Recorder	1.00	6755	Inside	4263.73	
Recorder	1.00	8322	Outside	4264.73	
Bullnose	3.00			4267.73	57.73 Anchor Tool

**Total Tool Length: 85.73**



**TRILOBITE  
TESTING, INC.**

**DRILL STEM TEST REPORT**

**FLUID SUMMARY**

American Warrior Inc.

**25-20S-22W Ness,KS**

PO Box 399  
Garden City, KS 67846

**KT #1-25**

Job Ticket: 62084

**DST#: 1**

ATTN: Jason Alm

Test Start: 2017.11.16 @ 03:32:00

**Mud and Cushion Information**

Mud Type: Gel Chem

Cushion Type:

Oil API:

deg API

Mud Weight: 9.00 lb/gal

Cushion Length:

ft

Water Salinity:

ppm

Viscosity: 61.00 sec/qt

Cushion Volume:

bbbl

Water Loss: 7.97 in<sup>3</sup>

Gas Cushion Type:

Resistivity: ohm.m

Gas Cushion Pressure:

psig

Salinity: 7500.00 ppm

Filter Cake: 1.00 inches

**Recovery Information**

Recovery Table

Length ft	Description	Volume bbl
30.00	Mud with show of oil/ Mud 100%	0.148

Total Length: 30.00 ft      Total Volume: 0.148 bbl

Num Fluid Samples: 0

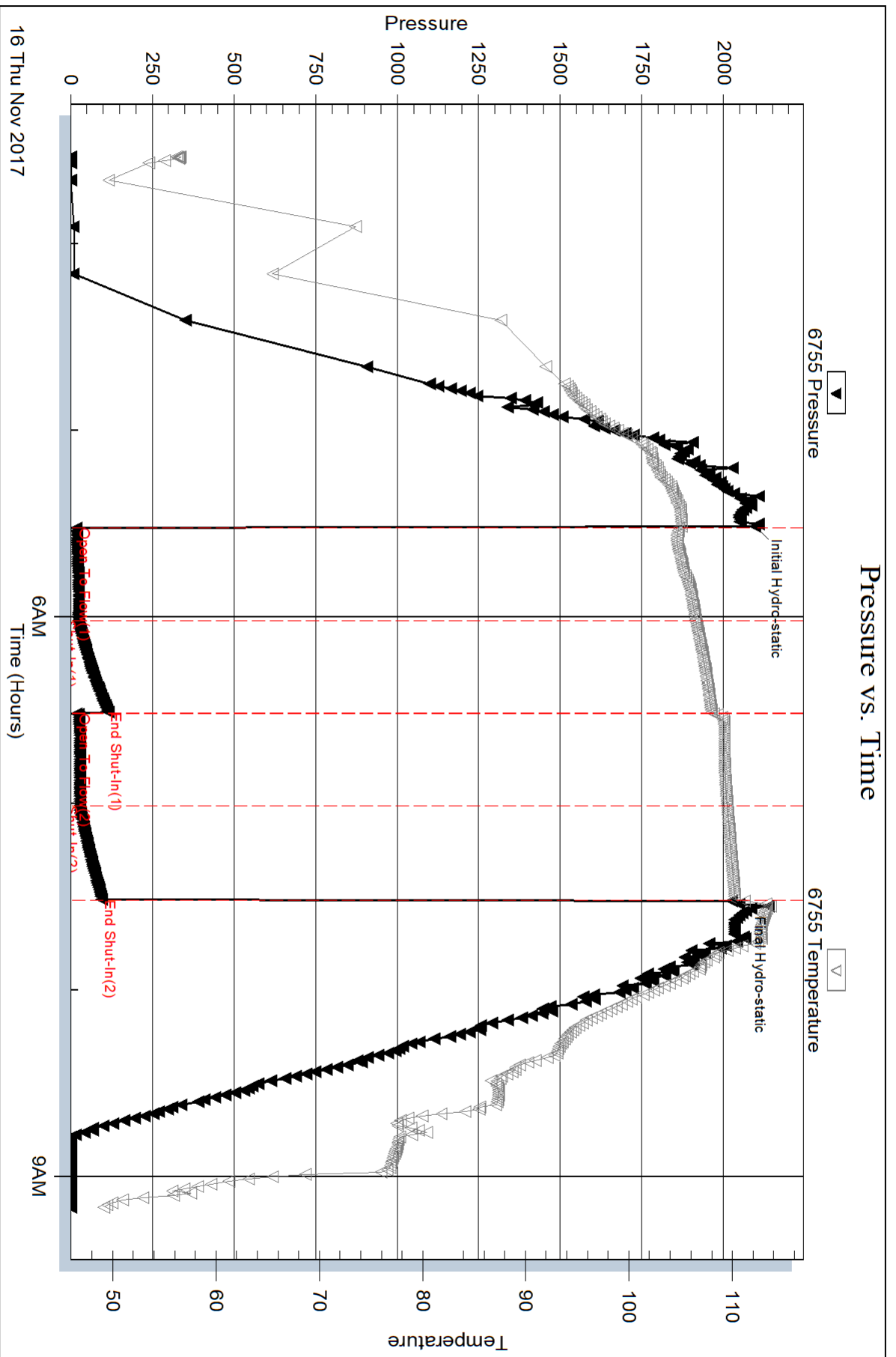
Num Gas Bombs: 0

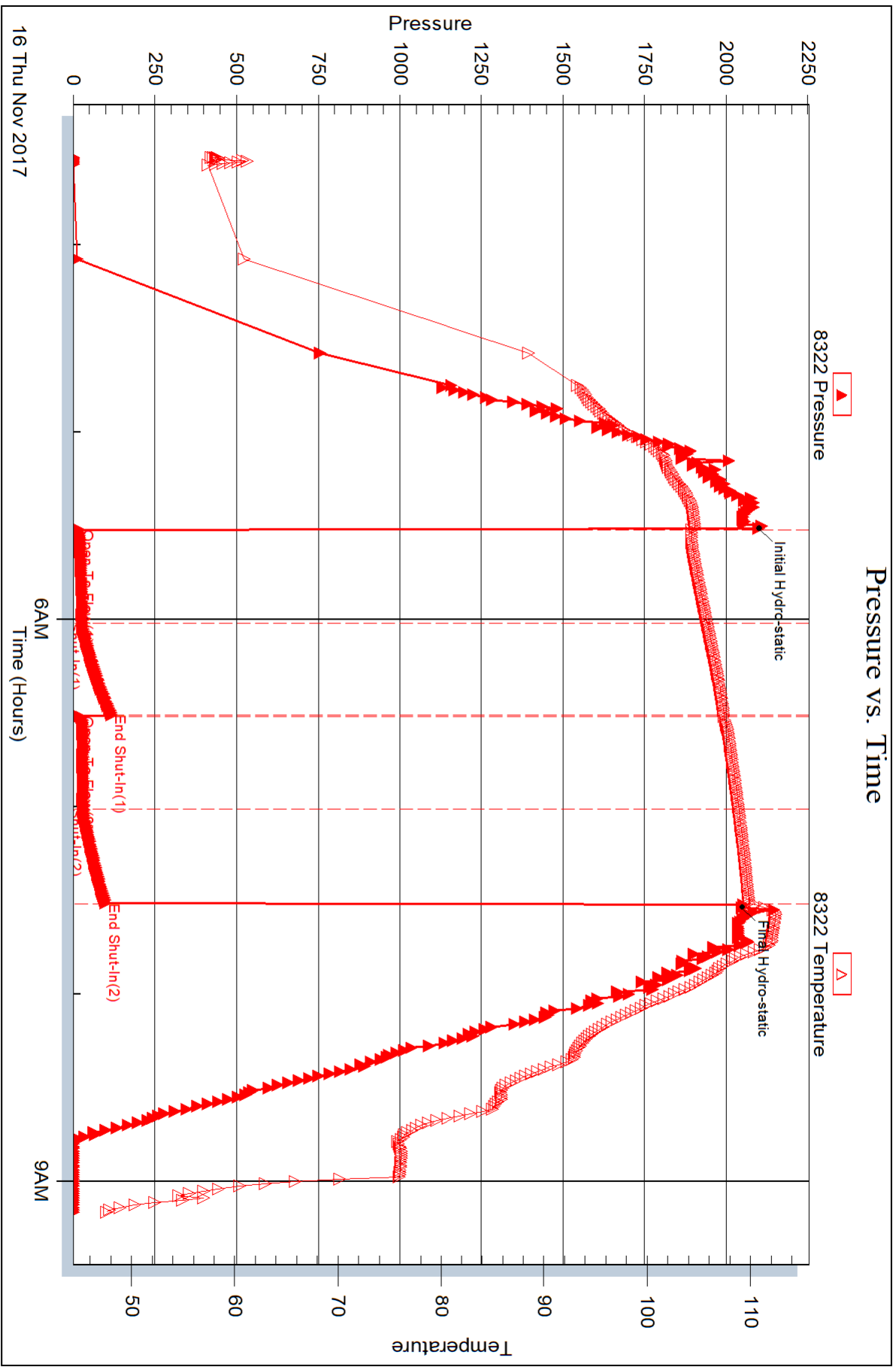
Serial #:

Laboratory Name:

Laboratory Location:

Recovery Comments:







## DRILL STEM TEST REPORT

Prepared For: **American Warrior Inc.**

PO Box 399  
Garden City, KS 67846

ATTN: Jason Alm

**KT #1-25**

**25-20S-22W Ness,KS**

Start Date: 2017.11.16 @ 19:32:00

End Date: 2017.11.17 @ 01:42:02

Job Ticket #: 62085                      DST #: 2

Trilobite Testing, Inc  
1515 Commerce Parkway Hays, KS 67601  
ph: 785-625-4778 fax: 785-625-5620

Printed: 2017.11.20 @ 09:58:03





**TRILOBITE TESTING, INC.**

# DRILL STEM TEST REPORT

American Warrior Inc.  
 PO Box 399  
 Garden City, KS 67846  
 ATTN: Jason Alm

**25-20S-22W Ness, KS**  
**KT #1-25**  
 Job Ticket: 62085 **DST#: 2**  
 Test Start: 2017.11.16 @ 19:32:00

## GENERAL INFORMATION:

Formation: **Mississippi**  
 Deviated: No Whipstock: ft (KB)  
 Time Tool Opened: 21:23:32  
 Time Test Ended: 01:42:02  
 Interval: **4281.00 ft (KB) To 4336.00 ft (KB) (TVD)**  
 Total Depth: 4336.00 ft (KB) (TVD)  
 Hole Diameter: 7.88 inches Hole Condition: Fair  
 Test Type: Conventional Bottom Hole (Initial)  
 Tester: Ken Swinney  
 Unit No: 72  
 Reference Elevations: 2189.00 ft (KB)  
 2181.00 ft (CF)  
 KB to GR/CF: 8.00 ft

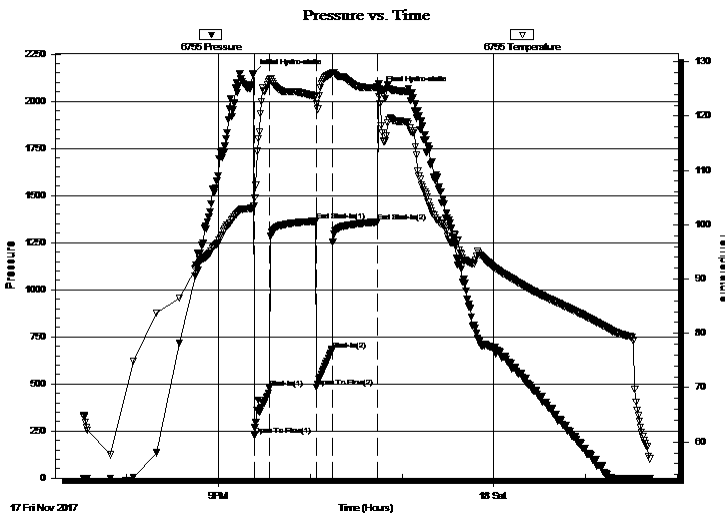
## Serial #: 6755

Inside

Press@RunDepth: 681.36 psig @ 4332.71 ft (KB) Capacity: psig  
 Start Date: 2017.11.17 End Date: 2017.11.18 Last Calib.: 2017.11.17  
 Start Time: 19:32:01 End Time: 01:42:02 Time On Btm: 2017.11.17 @ 21:23:02  
 Time Off Btm: 2017.11.17 @ 22:45:02

TEST COMMENT: IF 10 Minutes Blow built to BOB in 1 1/2 minutes  
 IS 30 Minutes No blow back  
 FF 10 Minutes Blow built to BOB in 2 minutes  
 FS 30 Minutes No blow back

## PRESSURE SUMMARY



Time (Min.)	Pressure (psig)	Temp (deg F)	Annotation
0	2144.93	103.51	Initial Hydro-static
1	225.12	103.50	Open To Flow (1)
11	476.36	126.68	Shut-In(1)
41	1362.94	123.59	End Shut-In(1)
42	483.17	122.34	Open To Flow (2)
52	681.36	127.83	Shut-In(2)
81	1359.04	125.32	End Shut-In(2)
82	2058.86	123.63	Final Hydro-static

## Recovery

Length (ft)	Description	Volume (bbl)
248.00	GMCO Gas 5% Mud 10% Oil 85%	3.21
868.00	GMWCO Mud 5% Water 10% Gas 15%	12.18
186.00	OCMW Oil 10% Mud 15% Water 75%	2.61
124.00	WOCM Water 5% Oil 10% Mud 85%	1.74
0.00	124' GIP	0.00

## Gas Rates

Choke (inches)	Pressure (psig)	Gas Rate (Mcf/d)



**TRILOBITE  
TESTING, INC.**

# DRILL STEM TEST REPORT

American Warrior Inc.  
PO Box 399  
Garden City, KS 67846  
ATTN: Jason Alm

**25-20S-22W Ness,KS**  
**KT #1-25**  
Job Ticket: 62085      **DST#: 2**  
Test Start: 2017.11.16 @ 19:32:00

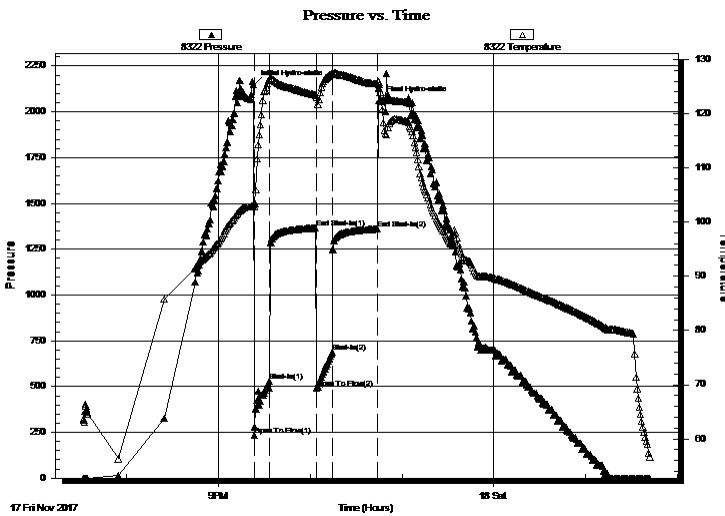
## GENERAL INFORMATION:

Formation: **Mississippi**  
Deviated: No Whipstock:                      ft (KB)  
Time Tool Opened: 21:23:32  
Time Test Ended: 01:42:02  
Interval: **4281.00 ft (KB) To 4336.00 ft (KB) (TVD)**  
Total Depth: 4336.00 ft (KB) (TVD)  
Hole Diameter: 7.88 inches Hole Condition: Fair  
Test Type: Conventional Bottom Hole (Initial)  
Tester: Ken Swinney  
Unit No: 72  
Reference Elevations: 2189.00 ft (KB)  
2181.00 ft (CF)  
KB to GR/CF: 8.00 ft

**Serial #: 8322      Outside**  
Press@RunDepth: 1361.57 psig @ 4333.71 ft (KB)      Capacity:                      psig  
Start Date: 2017.11.17      End Date: 2017.11.18      Last Calib.: 2017.11.17  
Start Time: 19:32:01      End Time: 01:42:02      Time On Btm: 2017.11.17 @ 21:23:17  
Time Off Btm: 2017.11.17 @ 22:45:02

**TEST COMMENT:** IF 10 Minutes Blow built to BOB in 1 1/2 minutes  
IS 30 Minutes No blow back  
FF 10 Minutes Blow built to BOB in 2 minutes  
FS 30 Minutes No blow back

## PRESSURE SUMMARY



Time (Min.)	Pressure (psig)	Temp (deg F)	Annotation
0	2149.12	103.30	Initial Hydro-static
1	234.51	102.92	Open To Flow (1)
10	530.09	126.30	Shut-In(1)
41	1365.46	123.36	End Shut-In(1)
41	490.37	123.00	Open To Flow (2)
52	687.47	127.36	Shut-In(2)
81	1361.57	125.60	End Shut-In(2)
82	2061.09	125.37	Final Hydro-static

## Recovery

Length (ft)	Description	Volume (bbl)
248.00	GMCO Gas 5% Mud 10% Oil 85%	3.21
868.00	GMWCO Mud 5% Water 10% Gas 15%	12.18,
186.00	OCMW Oil 10% Mud 15% Water 75%	2.61
124.00	WOCM Water 5% Oil 10% Mud 85%	1.74
0.00	124' GIP	0.00

## Gas Rates

	Choke (inches)	Pressure (psig)	Gas Rate (Mcf/d)



**TRILOBITE  
TESTING, INC.**

# DRILL STEM TEST REPORT

**TOOL DIAGRAM**

American Warrior Inc.

**25-20S-22W Ness,KS**

PO Box 399  
Garden City, KS 67846

**KT #1-25**

Job Ticket: 62085

**DST#: 2**

ATTN: Jason Alm

Test Start: 2017.11.16 @ 19:32:00

## Tool Information

Drill Pipe:	Length: 4245.00 ft	Diameter: 3.80 inches	Volume: 59.55 bbl	Tool Weight: 2000.00 lb
Heavy Wt. Pipe:	Length: 0.00 ft	Diameter: 0.00 inches	Volume: 0.00 bbl	Weight set on Packer: 20000.00 lb
Drill Collar:	Length: 30.00 ft	Diameter: 2.25 inches	Volume: 0.15 bbl	Weight to Pull Loose: 68000.00 lb
			<u>Total Volume: 59.70 bbl</u>	Tool Chased 0.00 ft
Drill Pipe Above KB:	22.00 ft			String Weight: Initial 61000.00 lb
Depth to Top Packer:	4281.00 ft			Final 65000.00 lb
Depth to Bottom Packer:	ft			
Interval between Packers:	55.71 ft			
Tool Length:	83.71 ft			
Number of Packers:	2	Diameter: 6.75 inches		

Tool Comments:

## Tool Description

Tool Description	Length (ft)	Serial No.	Position	Depth (ft)	Accum. Lengths
Shut-In Tool	5.00			4258.00	
Hydraulic tool	5.00			4263.00	
Jars	6.00			4269.00	
Safety Joint	2.00			4271.00	
Top Packer	5.00			4276.00	
Packer	5.00			4281.00	28.00 Bottom Of Top Packer
Anchor	17.00			4298.00	
Change Over Sub	1.00			4299.00	
Drill Pipe	31.71			4330.71	
Change Over Sub	1.00			4331.71	
Recorder	1.00	6755	Inside	4332.71	
Recorder	1.00	8322	Outside	4333.71	
Bullnose	3.00			4336.71	55.71 Anchor Tool

**Total Tool Length: 83.71**



**TRILOBITE  
TESTING, INC.**

# DRILL STEM TEST REPORT

## FLUID SUMMARY

American Warrior Inc.

**25-20S-22W Ness,KS**

PO Box 399  
Garden City, KS 67846

**KT #1-25**

Job Ticket: 62085

**DST#: 2**

ATTN: Jason Alm

Test Start: 2017.11.16 @ 19:32:00

### Mud and Cushion Information

Mud Type: Gel Chem

Cushion Type:

Oil API:

36 deg API

Mud Weight: 9.00 lb/gal

Cushion Length:

ft

Water Salinity:

24000 ppm

Viscosity: 56.00 sec/qt

Cushion Volume:

bbbl

Water Loss: 7.59 in<sup>3</sup>

Gas Cushion Type:

Resistivity: ohm.m

Gas Cushion Pressure:

psig

Salinity: 8000.00 ppm

Filter Cake: 1.00 inches

### Recovery Information

Recovery Table

Length ft	Description	Volume bbl
248.00	GMCO Gas 5% Mud 10% Oil 85%	3.206
868.00	GMWCO Mud 5% Water 10% Gas 15% Oil 70	12.176
186.00	OCMW Oil 10% Mud 15% Water 75%	2.609
124.00	WOCM Water 5% Oil 10% Mud 85%	1.739
0.00	124' GIP	0.000

Total Length: 1426.00 ft      Total Volume: 19.730 bbl

Num Fluid Samples: 0

Num Gas Bombs: 0

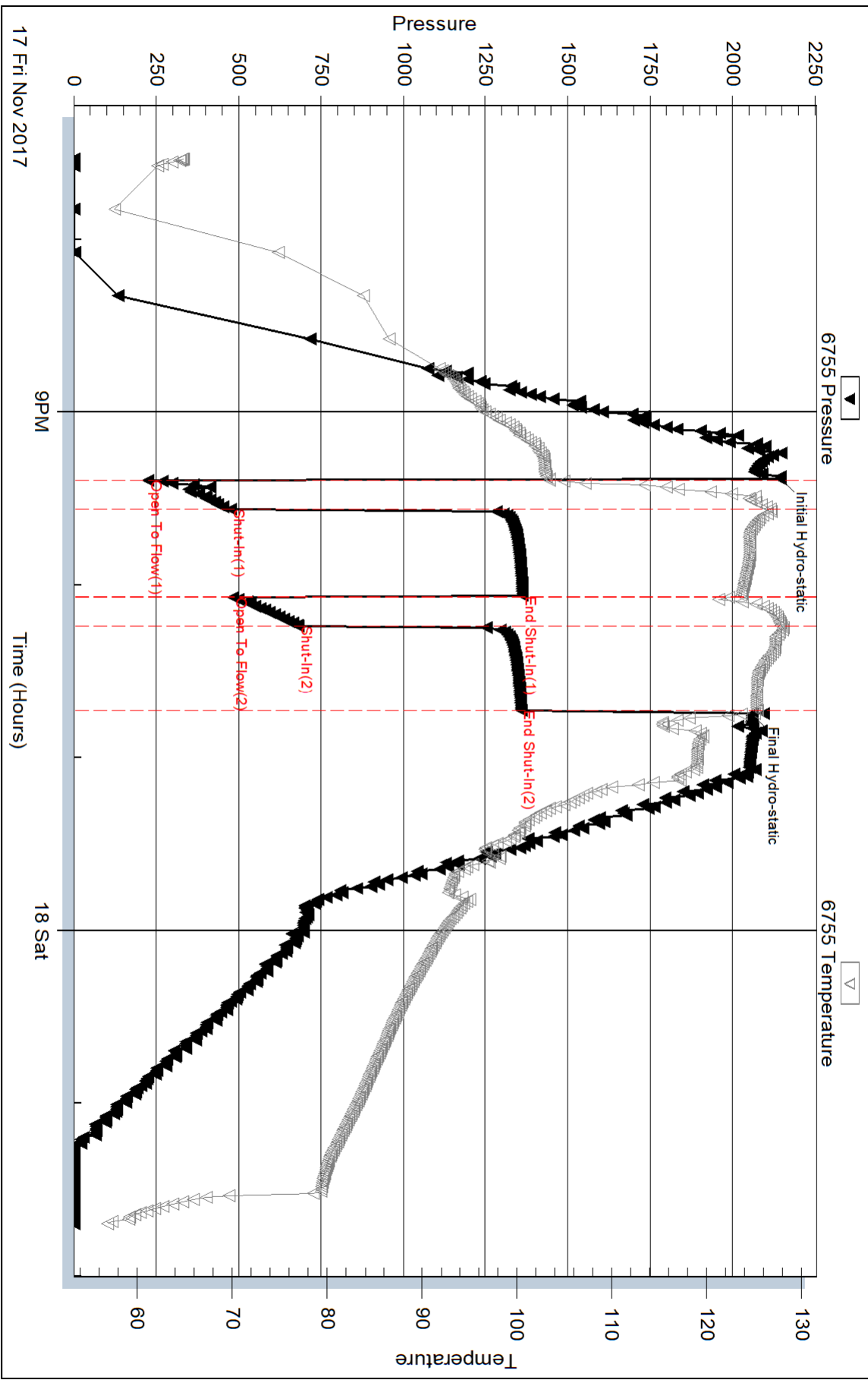
Serial #:

Laboratory Name:

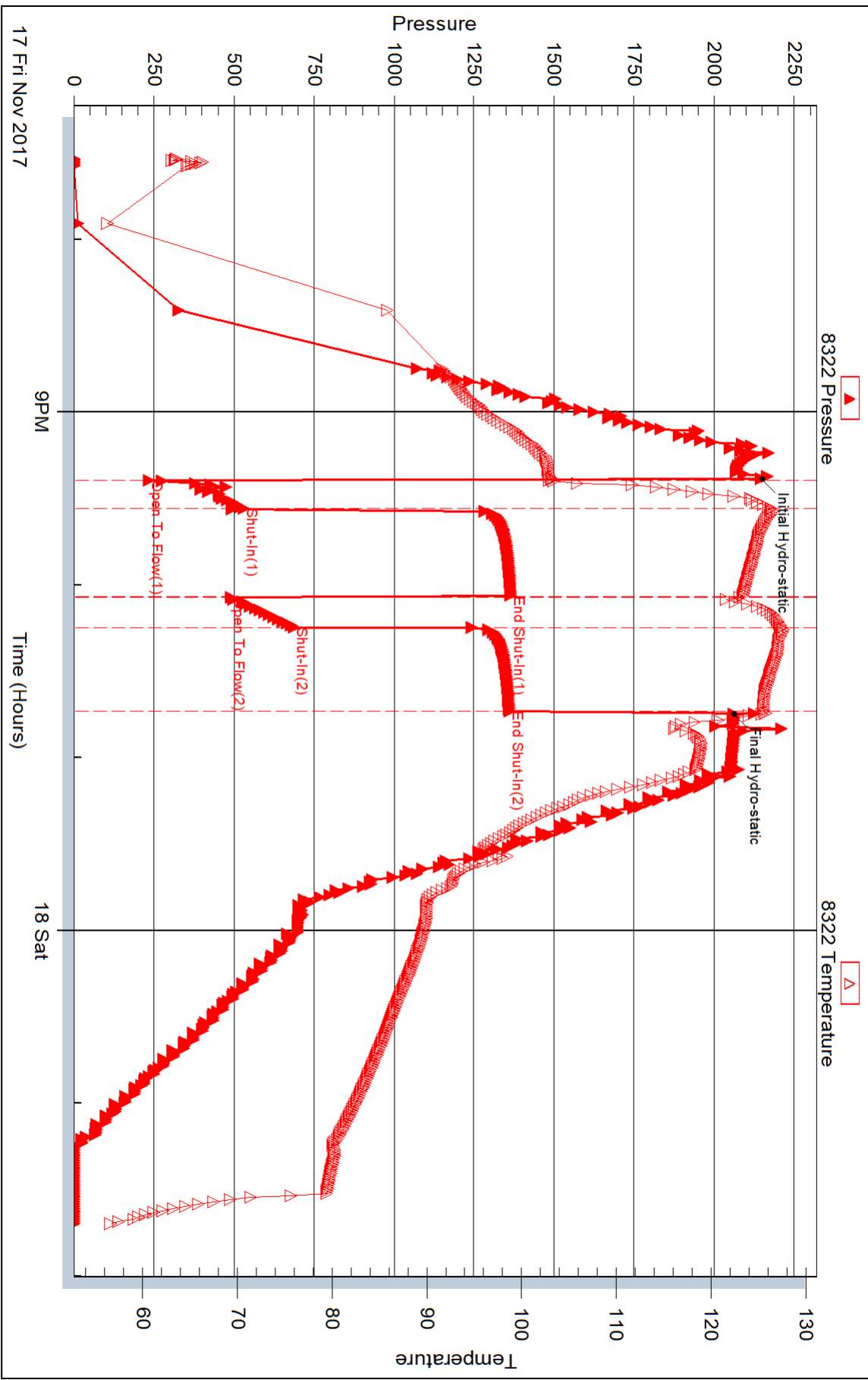
Laboratory Location:

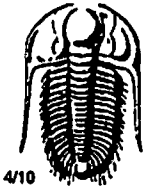
Recovery Comments: Recovery Resistivity .381 ohms @ 52 deg.

### Pressure vs. Time



### Pressure vs. Time





# TRILOBITE TESTING INC.

1515 Commerce Parkway • Hays, Kansas 67601

## Test Ticket

NO. 62084

Well Name & No. KT#1-25 Test No. 1 Date 16 NOV 17  
 Company American Warrior Inc Elevation 2189 KB 2181 GL  
 Address 3118 Lummings Rd PO Box 399 Garden City Kansas 67846  
 Co. Rep / Geo. Jason Alm Rig Discovery Rig 4  
 Location: Sec. 25 Twp. 20S Rge. 22W Co. Ness State KS

Interval Tested 4210-4268 Zone Tested Fort Scott  
 Anchor Length 58 Drill Pipe Run 4193 Mud Wt. 9.25  
 Top Packer Depth 4205 Drill Collars Run 30 Vis 61  
 Bottom Packer Depth 4210 Wt. Pipe Run — WL 8.0  
 Total Depth 4268 Chlorides 7500 ppm System LCM 1#

Blow Description I.F. Blow built to 1 inch  
I.S.I. No blow back  
F.F. Blow built to 3 inches  
F.S.I. No blow back

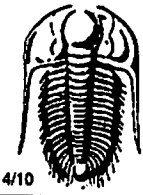
Rec	Feet of	%gas	%oil	%water	%mud
<u>30</u>	<u>Mud with show of oil</u>			<u>100</u>	
Rec	Feet of	%gas	%oil	%water	%mud
Rec	Feet of	%gas	%oil	%water	%mud
Rec	Feet of	%gas	%oil	%water	%mud

Rec Total 30 BHT 110 Gravity \_\_\_\_\_ API RW \_\_\_\_\_ @ \_\_\_\_\_ °F Chlorides \_\_\_\_\_ ppm

(A) Initial Hydrostatic <u>2097</u>	<input checked="" type="checkbox"/> Test <u>1150</u>	T-On Location <u>1:59 am</u>
(B) First Initial Flow <u>17</u>	<input checked="" type="checkbox"/> Jars <u>250</u>	T-Started <u>3:32 am</u>
(C) First Final Flow <u>24</u>	<input checked="" type="checkbox"/> Safety Joint <u>75</u>	T-Open <u>5:31 am</u>
(D) Initial Shut-In <u>114</u>	<input type="checkbox"/> Circ Sub _____	T-Pulled <u>7:31 am</u>
(E) Second Initial Flow <u>18</u>	<input type="checkbox"/> Hourly Standby _____	T-Out <u>9:12 am</u>
(F) Second Final Flow <u>28</u>	<input checked="" type="checkbox"/> Mileage <u>128</u> 96	Comments _____
(G) Final Shut-In <u>96</u>	<input type="checkbox"/> Sampler _____	_____
(H) Final Hydrostatic <u>2047</u>	<input type="checkbox"/> Straddle _____	<input type="checkbox"/> Ruined Shale Packer _____
Initial Open <u>30</u>	<input type="checkbox"/> Shale Packer _____	<input type="checkbox"/> Ruined Packer _____
Initial Shut-In <u>30</u>	<input type="checkbox"/> Extra Packer _____	<input type="checkbox"/> Extra Copies _____
Final Flow <u>30</u>	<input type="checkbox"/> Extra Recorder _____	Sub Total <u>0</u>
Final Shut-In <u>30</u>	<input type="checkbox"/> Day Standby _____	Total <u>1571</u>
	<input type="checkbox"/> Accessibility _____	MP/DST Disc't _____
	Sub Total <u>1571</u>	

Approved By [Signature] Our Representative [Signature]

Trilobite Testing Inc. shall not be liable for damaged of any kind of the property or personnel of the one for whom a test is made, or for any loss suffered or sustained, directly or indirectly, through the use of its equipment, or its statements or opinion concerning the results of any test, tools lost or damaged in the hole shall be paid for at cost by the party for whom the test is made.



# TRILOBITE TESTING INC.

1515 Commerce Parkway • Hays, Kansas 67601

## Test Ticket

NO. 62085

Well Name & No. KT #1-25 Test No. 2 Date 16 NOV 17  
 Company American Warrior Inc Elevation 2189 KB 2181 GL  
 Address 3118 Cummings Rd PO Box 399 Garden City KS 67846  
 Co. Rep / Geo. Jason Alm Rig Discovery Rig 4  
 Location: Sec. 25 Twp. 20S Rge. 22W Co. Ness State KS

Interval Tested 4281-4336 Zone Tested Mississippi  
 Anchor Length 55 Drill Pipe Run 4245 Mud Wt. 9.4  
 Top Packer Depth 4276 Drill Collars Run 30 Vis 56  
 Bottom Packer Depth 4281 Wt. Pipe Run - WL 7.6  
 Total Depth 4336 Chlorides 8000 ppm System LCM 1#

Blow Description I.F. Blow built to BOB in 1 1/2 minutes

I.S.I. No blow back

F.F. Blow built to BOB in 2 minutes

F.S.I. No blow back

Rec	Feet of	%gas	%oil	%water	%mud
<u>124</u>	<u>GFP</u>	<u>100</u>			
<u>248</u>	<u>Gas cut Muddy Oil</u>	<u>5</u>	<u>85</u>		<u>10</u>
<u>186</u>	<u>Oil cut Muddy Water</u>		<u>10</u>	<u>75</u>	<u>15</u>
<u>868</u>	<u>Mud+Water cut Gassy Oil</u>	<u>15</u>	<u>70</u>	<u>10</u>	<u>5</u>
<u>124</u>	<u>Water cut Oily Mud</u>		<u>10</u>	<u>5</u>	<u>85</u>

Rec Total \_\_\_\_\_ BHT 125 Gravity 36 API RW .381 @ 52 °F Chlorides 24,000 ppm

(A) Initial Hydrostatic 2144  
 (B) First Initial Flow 225  
 (C) First Final Flow 476  
 (D) Initial Shut-In 1362  
 (E) Second Initial Flow 483  
 (F) Second Final Flow 681  
 (G) Final Shut-In 1359  
 (H) Final Hydrostatic 2059

Test 1150  
 Jars 250  
 Safety Joint 75  
 Circ Sub  
 Hourly Standby  
 Mileage 128 96  
 Sampler  
 Straddle  
 Shale Packer  
 Extra Packer  
 Extra Recorder  
 Day Standby  
 Accessibility  
 Sub Total 1571

T-On Location 6:36 pm  
 T-Started 7:32 pm  
 T-Open 9:23 pm  
 T-Pulled 10:43 pm  
 T-Out 1:42 am

Comments \_\_\_\_\_  
 Ruined Shale Packer  
 Ruined Packer  
 Extra Copies  
 Sub Total 0  
 Total 1571  
 MP/DST Disc't \_\_\_\_\_

Approved By \_\_\_\_\_

Our Representative [Signature]

Trilobite Testing Inc. shall not be liable for damaged of any kind of the property or personnel of the one for whom a test is made, or for any loss suffered or sustained, directly or indirectly, through the use of its equipment, or its statements or opinion concerning the results of any test, tools lost or damaged in the hole shall be paid for at cost by the party for whom the test is made.