

DRILL STEM TEST REPORT

Prepared For: **Carmen Schmitt Inc**

PO Box 47
Great Bend, KS 67530

ATTN: Brad Rine

Wetzel #1

17-26S-20W Edwards,KS

Start Date: 2017.11.17 @ 14:53:41

End Date: 2017.11.17 @ 22:11:11

Job Ticket #: 63631 DST #: 1

Trilobite Testing, Inc
1515 Commerce Parkway Hays, KS 67601
ph: 785-625-4778 fax: 785-625-5620

Printed: 2017.11.21 @ 09:32:09



**TRILOBITE
TESTING, INC.**

DRILL STEM TEST REPORT

Carmen Schmitt Inc
PO Box 47
Great Bend, KS 67530
ATTN: Brad Rine

17-26S-20W Edwards,KS

Wetzel #1

Job Ticket: 63631 **DST#: 1**
Test Start: 2017.11.17 @ 14:53:41

GENERAL INFORMATION:

Formation: **Mississippi**
Deviated: No Whipstock: ft (KB)
Time Tool Opened: 16:37:26
Time Test Ended: 22:11:11
Interval: **4667.00 ft (KB) To 4746.00 ft (KB) (TVD)**
Total Depth: 4746.00 ft (KB) (TVD)
Hole Diameter: 7.88 inches Hole Condition: Good
Reference Elevations: 2249.00 ft (KB)
2244.00 ft (CF)
KB to GR/CF: 5.00 ft
Test Type: Conventional Bottom Hole (Initial)
Tester: Leal Cason
Unit No: 74

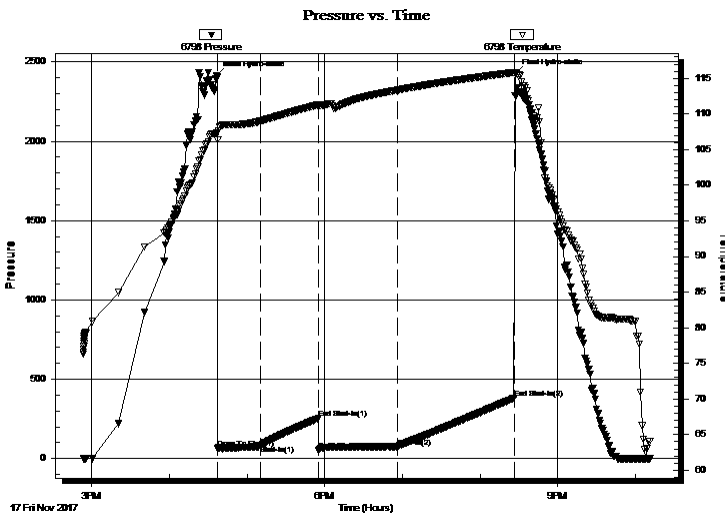
Serial #: 6798

Inside

Press@RunDepth: 73.59 psig @ 4668.00 ft (KB) Capacity: 8000.00 psig
Start Date: 2017.11.17 End Date: 2017.11.17 Last Calib.: 2017.11.17
Start Time: 14:53:42 End Time: 22:11:11 Time On Btm: 2017.11.17 @ 16:36:26
Time Off Btm: 2017.11.17 @ 20:27:26

TEST COMMENT: IF: Fair Blow , BOB in 16 minutes
IS: No Blow Back
FF: Strong Blow , BOB in 20 seconds
FS: No Blow Back

PRESSURE SUMMARY



Time (Min.)	Pressure (psig)	Temp (deg F)	Annotation
0	2416.63	107.29	Initial Hydro-static
1	63.47	106.43	Open To Flow (1)
34	82.98	109.00	Shut-In(1)
79	253.11	111.27	End Shut-In(1)
79	53.83	111.23	Open To Flow (2)
140	73.59	113.34	Shut-In(2)
230	380.85	115.83	End Shut-In(2)
231	2426.95	115.61	Final Hydro-static

Recovery

Length (ft)	Description	Volume (bbl)
0.00	2520' GIP	0.00
60.00	SGCM 2%G 98%M	0.30

Gas Rates

Choke (inches)	Pressure (psig)	Gas Rate (Mcf/d)



**TRILOBITE
TESTING, INC.**

DRILL STEM TEST REPORT

TOOL DIAGRAM

Carmen Schmitt Inc
PO Box 47
Great Bend, KS 67530
ATTN: Brad Rine

17-26S-20W Edwards,KS
Wetzel #1
Job Ticket: 63631 **DST#: 1**
Test Start: 2017.11.17 @ 14:53:41

Tool Information

Drill Pipe:	Length: 4436.00 ft	Diameter: 3.80 inches	Volume: 62.23 bbl	Tool Weight:	2100.00 lb
Heavy Wt. Pipe:	Length: 0.00 ft	Diameter: 0.00 inches	Volume: 0.00 bbl	Weight set on Packer:	25000.00 lb
Drill Collar:	Length: 238.00 ft	Diameter: 2.25 inches	Volume: 1.17 bbl	Weight to Pull Loose:	70000.00 lb
			<u>Total Volume: 63.40 bbl</u>	Tool Chased	ft
Drill Pipe Above KB:	33.00 ft			String Weight: Initial	64000.00 lb
Depth to Top Packer:	4667.00 ft			Final	64000.00 lb
Depth to Bottom Packer:	ft				
Interval between Packers:	79.00 ft				
Tool Length:	105.00 ft				
Number of Packers:	2	Diameter: 6.75 inches			

Tool Comments:

Tool Description	Length (ft)	Serial No.	Position	Depth (ft)	Accum. Lengths
-------------------------	--------------------	-------------------	-----------------	-------------------	-----------------------

Shut In Tool	5.00			4646.00	
Hydraulic tool	5.00			4651.00	
Jars	5.00			4656.00	
Safety Joint	2.00			4658.00	
Packer	5.00			4663.00	26.00 Bottom Of Top Packer
Packer	4.00			4667.00	
Stubb	1.00			4668.00	
Recorder	0.00	6798	Inside	4668.00	
Recorder	0.00	6806	Outside	4668.00	
Perforations	5.00			4673.00	
Change Over Sub	1.00			4674.00	
Drill Pipe	63.00			4737.00	
Change Over Sub	1.00			4738.00	
Perforations	5.00			4743.00	
Bullnose	3.00			4746.00	79.00 Bottom Packers & Anchor

Total Tool Length: 105.00



**TRILOBITE
TESTING, INC.**

DRILL STEM TEST REPORT

FLUID SUMMARY

Carmen Schmitt Inc
PO Box 47
Great Bend, KS 67530
ATTN: Brad Rine

17-26S-20W Edwards,KS
Wetzel #1
Job Ticket: 63631 **DST#: 1**
Test Start: 2017.11.17 @ 14:53:41

Mud and Cushion Information

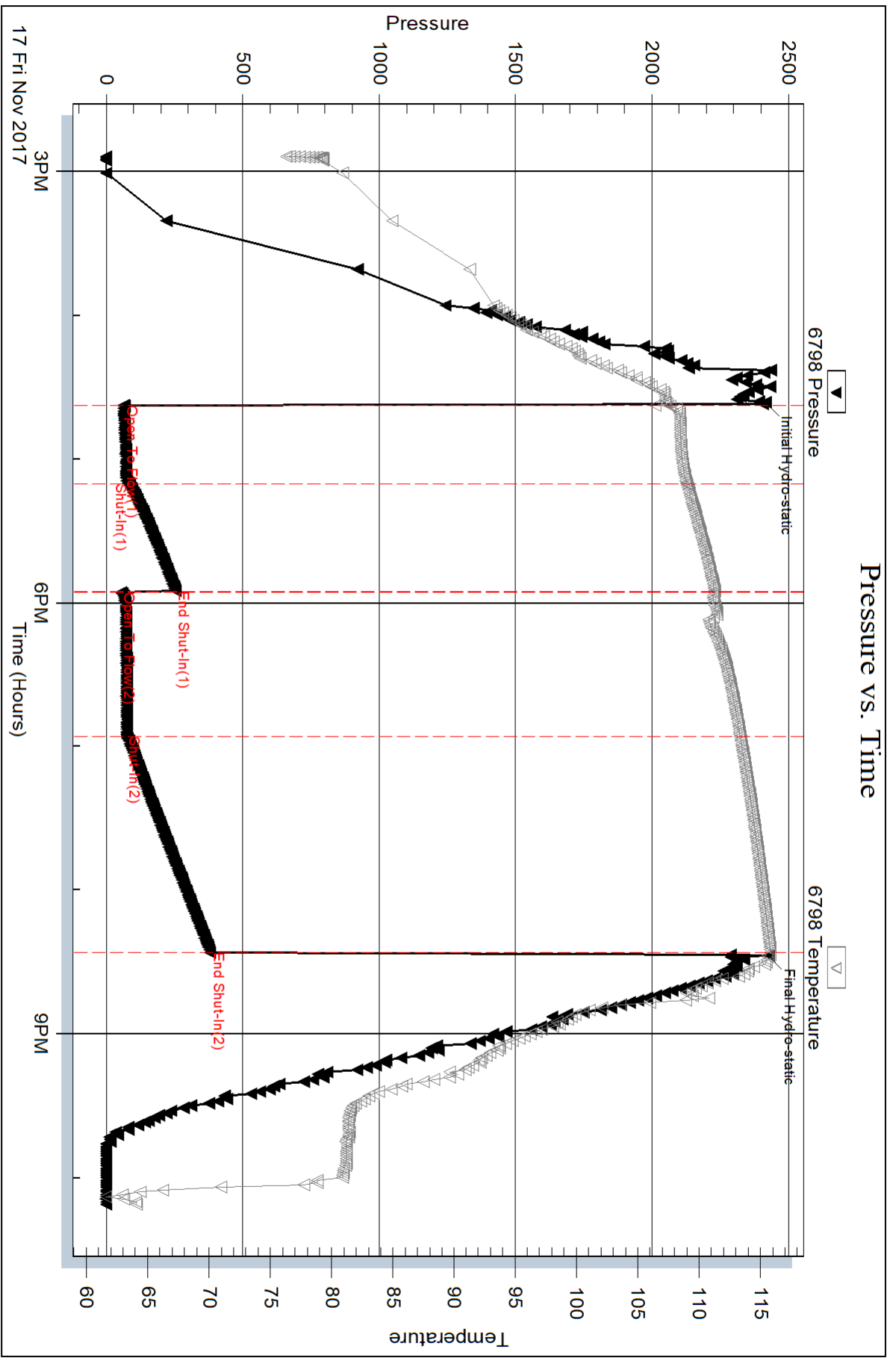
Mud Type: Gel Chem	Cushion Type:	Oil API:	deg API
Mud Weight: 9.00 lb/gal	Cushion Length: ft	Water Salinity:	ppm
Viscosity: 56.00 sec/qt	Cushion Volume: bbl		
Water Loss: 9.18 in ³	Gas Cushion Type:		
Resistivity: ohm.m	Gas Cushion Pressure: psig		
Salinity: 7950.00 ppm			
Filter Cake: 0.02 inches			

Recovery Information

Recovery Table

Length ft	Description	Volume bbl
0.00	2520' GIP	0.000
60.00	SGCM 2%G 98%M	0.295

Total Length: 60.00 ft Total Volume: 0.295 bbl
 Num Fluid Samples: 0 Num Gas Bombs: 0 Serial #:
 Laboratory Name: Laboratory Location:
 Recovery Comments:

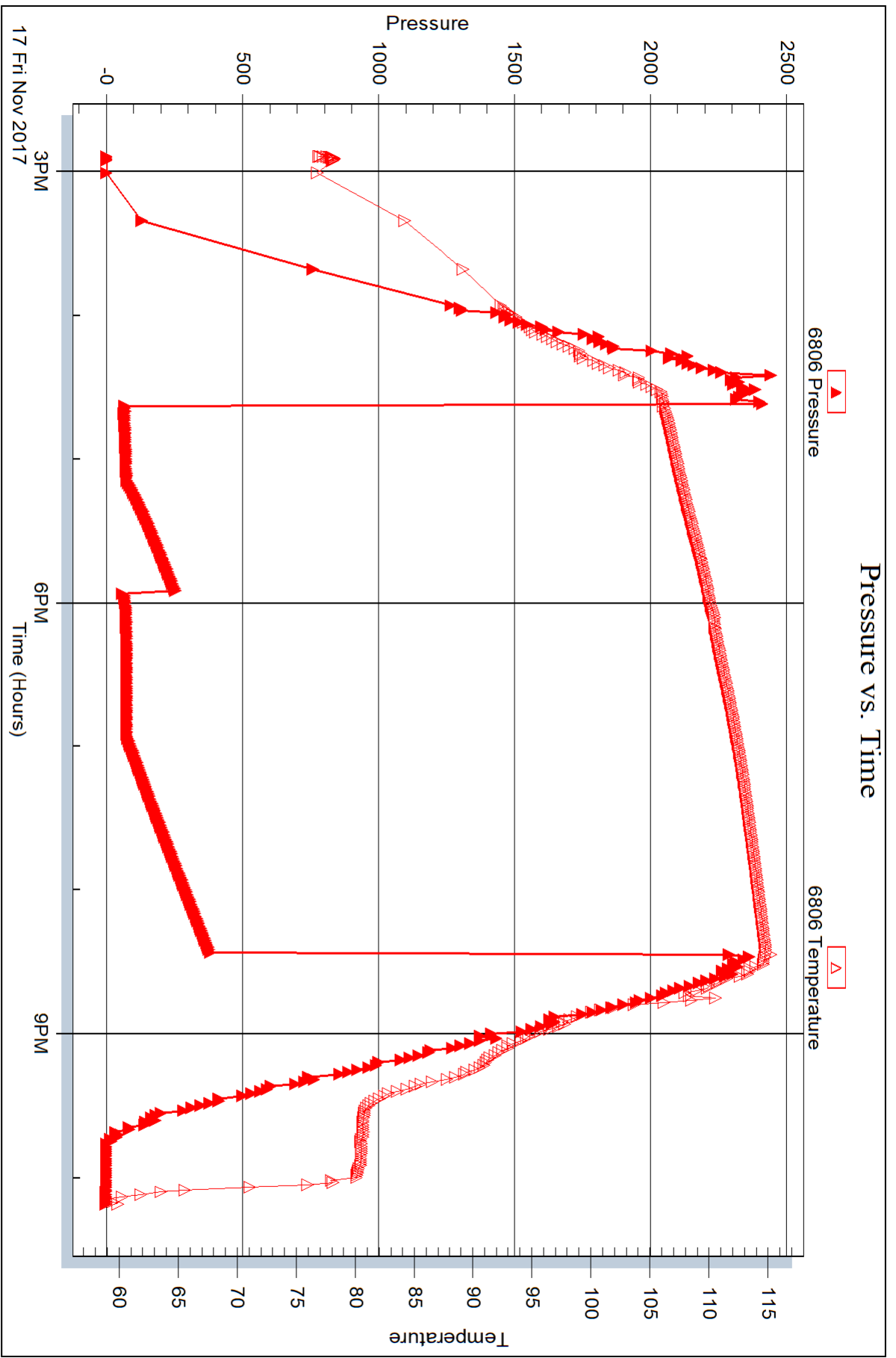


Serial #: 6806

Outside Carmen Schmitt Inc

Welzel #1

DST Test Number: 1





DRILL STEM TEST REPORT

Prepared For: **Carmen Schmitt Inc**

PO Box 47
Great Bend, KS 67530

ATTN: Brad Rine

Wetzel #1

17-26S-20W Edwards,KS

Start Date: 2017.11.18 @ 06:56:18

End Date: 2017.11.18 @ 14:21:48

Job Ticket #: 63632 DST #: 2

Trilobite Testing, Inc
1515 Commerce Parkway Hays, KS 67601
ph: 785-625-4778 fax: 785-625-5620

Printed: 2017.11.21 @ 08:29:00

Carmen Schmitt Inc
17-26S-20W Edwards,KS
Wetzel #1
DST # 2
Mississippi
2017.11.18



**TRILOBITE
TESTING, INC.**

DRILL STEM TEST REPORT

Carmen Schmitt Inc
PO Box 47
Great Bend, KS 67530
ATTN: Brad Rine

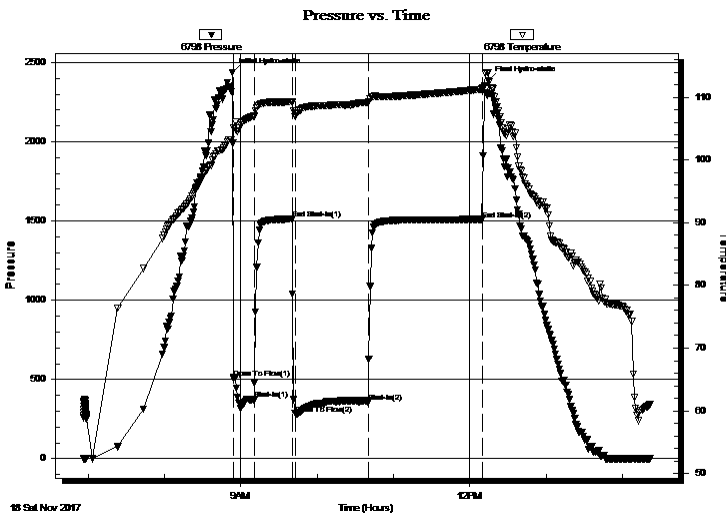
17-26S-20W Edwards,KS
Wetzel #1
Job Ticket: 63632 **DST#: 2**
Test Start: 2017.11.18 @ 06:56:18

GENERAL INFORMATION:

Formation: **Mississippi**
Deviated: No Whipstock: ft (KB)
Time Tool Opened: 08:54:18
Time Test Ended: 14:21:48
Interval: **4667.00 ft (KB) To 4754.00 ft (KB) (TVD)**
Total Depth: 4754.00 ft (KB) (TVD)
Hole Diameter: 7.88 inches Hole Condition: Good
Test Type: Conventional Bottom Hole (Reset)
Tester: Leal Cason
Unit No: 74
Reference Elevations: 2249.00 ft (KB)
2244.00 ft (CF)
KB to GR/CF: 5.00 ft

Serial #: 6798 Inside
Press@RunDepth: 356.96 psig @ 4668.00 ft (KB) Capacity: 8000.00 psig
Start Date: 2017.11.18 End Date: 2017.11.18 Last Calib.: 2017.11.18
Start Time: 06:56:19 End Time: 14:21:48 Time On Btm: 2017.11.18 @ 08:53:33
Time Off Btm: 2017.11.18 @ 12:14:33

TEST COMMENT: IF: Strong Blow , BOB in 30 seconds, GTS in 3 minutes, Gauged & Caught Sample
IS: No Blow Back
FF: Strong Blow , BOB & GTS Immediate, Gauged Gas
FS: Weak Surface Blow Back



PRESSURE SUMMARY

Time (Min.)	Pressure (psig)	Temp (deg F)	Annotation
0	2437.97	102.79	Initial Hydro-static
1	507.82	102.80	Open To Flow (1)
17	372.47	107.00	Shut-In(1)
47	1511.83	109.31	End Shut-In(1)
50	283.47	107.07	Open To Flow (2)
107	356.96	109.16	Shut-In(2)
197	1510.09	111.31	End Shut-In(2)
201	2387.99	113.91	Final Hydro-static

Recovery

Length (ft)	Description	Volume (bbl)
0.00	4365 GIP	0.00
118.00	GWOCM 16%G 14%W 20%O 50%M	0.58
165.00	SOGCM 5%G 10%O 85%M	1.75

Gas Rates

	Choke (inches)	Pressure (psig)	Gas Rate (Mcf/d)
First Gas Rate	0.25	150.00	237.96
Last Gas Rate	0.50	151.00	1018.60
Max. Gas Rate	0.50	151.00	1018.60

* Recovery from multiple tests



**TRILOBITE
TESTING, INC.**

DRILL STEM TEST REPORT

TOOL DIAGRAM

Carmen Schmitt Inc
PO Box 47
Great Bend, KS 67530
ATTN: Brad Rine

17-26S-20W Edwards,KS
Wetzel #1
Job Ticket: 63632 **DST#: 2**
Test Start: 2017.11.18 @ 06:56:18

Tool Information

Drill Pipe:	Length: 4468.00 ft	Diameter: 3.80 inches	Volume: 62.67 bbl	Tool Weight:	2100.00 lb
Heavy Wt. Pipe:	Length: 0.00 ft	Diameter: 0.00 inches	Volume: 0.00 bbl	Weight set on Packer:	25000.00 lb
Drill Collar:	Length: 180.00 ft	Diameter: 2.25 inches	Volume: 0.89 bbl	Weight to Pull Loose:	80000.00 lb
			<u>Total Volume: 63.56 bbl</u>	Tool Chased	ft
Drill Pipe Above KB:	7.00 ft			String Weight: Initial	58000.00 lb
Depth to Top Packer:	4667.00 ft			Final	58000.00 lb
Depth to Bottom Packer:	ft				
Interval between Packers:	87.00 ft				
Tool Length:	113.00 ft				
Number of Packers:	2	Diameter: 6.75 inches			

Tool Comments:

Tool Description	Length (ft)	Serial No.	Position	Depth (ft)	Accum. Lengths
-------------------------	--------------------	-------------------	-----------------	-------------------	-----------------------

Shut In Tool	5.00			4646.00	
Hydraulic tool	5.00			4651.00	
Jars	5.00			4656.00	
Safety Joint	2.00			4658.00	
Packer	5.00			4663.00	26.00 Bottom Of Top Packer
Packer	4.00			4667.00	
Stubb	1.00			4668.00	
Recorder	0.00	6798	Inside	4668.00	
Recorder	0.00	6806	Outside	4668.00	
Perforations	8.00			4676.00	
Change Over Sub	1.00			4677.00	
Drill Pipe	63.00			4740.00	
Change Over Sub	1.00			4741.00	
Perforations	10.00			4751.00	
Bullnose	3.00			4754.00	87.00 Bottom Packers & Anchor

Total Tool Length: 113.00



**TRILOBITE
TESTING, INC.**

DRILL STEM TEST REPORT

FLUID SUMMARY

Carmen Schmitt Inc
PO Box 47
Great Bend, KS 67530
ATTN: Brad Rine

17-26S-20W Edwards,KS
Wetzel #1
Job Ticket: 63632 **DST#: 2**
Test Start: 2017.11.18 @ 06:56:18

Mud and Cushion Information

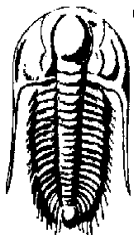
Mud Type: Gel Chem	Cushion Type:	Oil API: 36.6 deg API
Mud Weight: 9.00 lb/gal	Cushion Length: ft	Water Salinity: 80000 ppm
Viscosity: 56.00 sec/qt	Cushion Volume: bbl	
Water Loss: 9.18 in ³	Gas Cushion Type:	
Resistivity: ohm.m	Gas Cushion Pressure: psig	
Salinity: 7950.00 ppm		
Filter Cake: 0.02 inches		

Recovery Information

Recovery Table

Length ft	Description	Volume bbl
0.00	4365 GIP	0.000
118.00	GWOCM 16%G 14%W 20%O 50%M	0.580
165.00	SOGCM 5%G 10%O 85%M	1.750

Total Length: 283.00 ft Total Volume: 2.330 bbl
Num Fluid Samples: 0 Num Gas Bombs: 0 Serial #:
Laboratory Name: Laboratory Location:
Recovery Comments: Rw .1 @ 68



**TRILOBITE
TESTING, INC.**

DRILL STEM TEST REPORT

GAS RATES

Carmen Schmitt Inc
PO Box 47
Great Bend, KS 67530
ATTN: Brad Rine

17-26S-20W Edwards,KS

Wetzel #1

Job Ticket: 63632

DST#: 2

Test Start: 2017.11.18 @ 06:56:18

Gas Rates Information

Temperature: 59 (deg F)
Relative Density: 0.65
Z Factor: 0.8

Gas Rates Table

Flow Period	Elapsed Time	Choke (inches)	Pressure (psig)	Gas Rate (Mcf/d)
1	10	0.25	150.00	237.96
1	15	0.50	110.00	742.03
2	10	0.50	105.00	708.30
2	20	0.50	142.00	957.89
2	30	0.50	149.00	1005.11
2	40	0.50	150.00	1011.85
2	50	0.50	151.00	1018.60
2	60	0.50	151.00	1018.60

Serial #: 6798

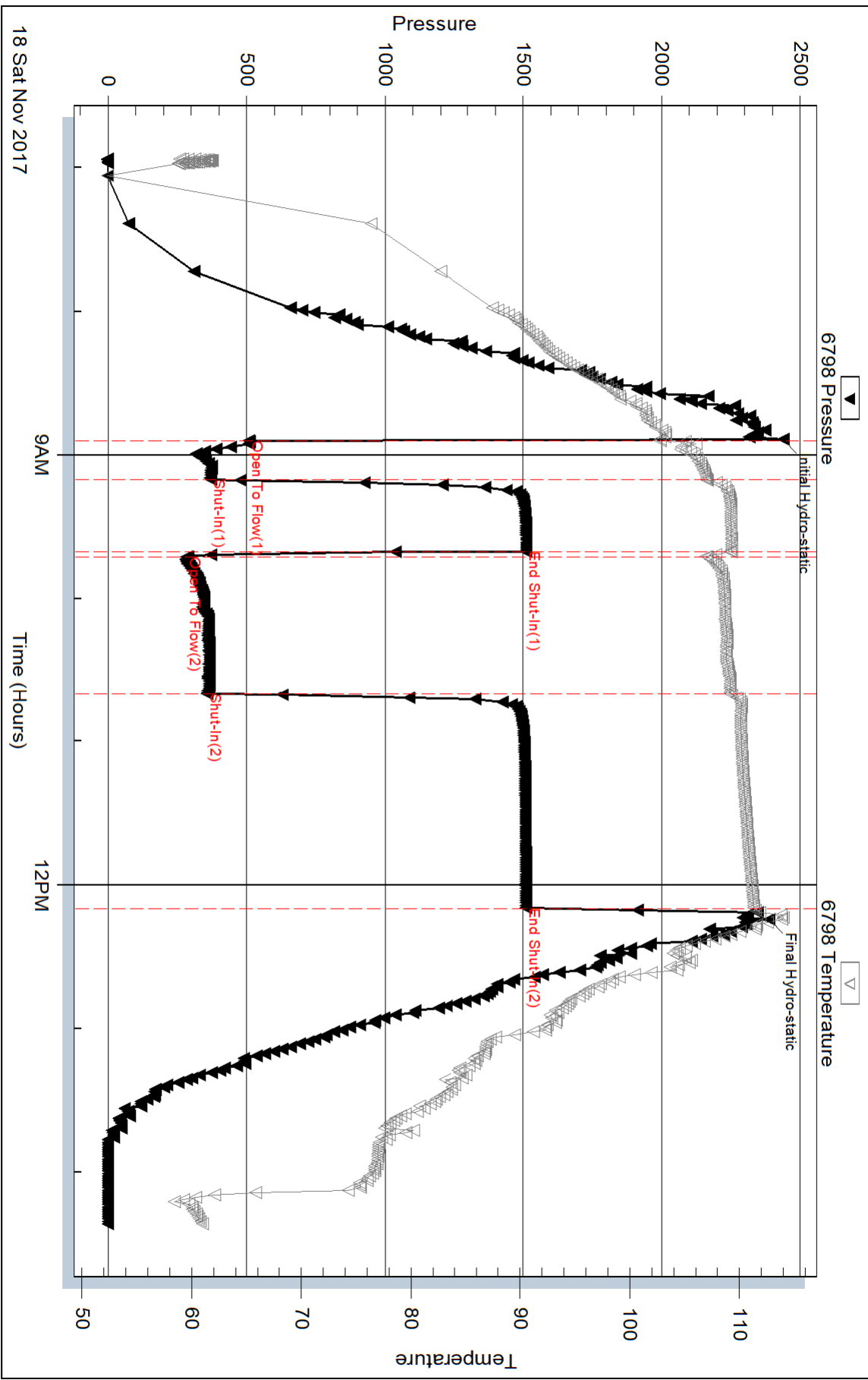
Inside

Carmen Schmitt Inc

Well #1

DST Test Number: 2

Pressure vs. Time



Trilobite Testing, Inc

Ref. No: 63632

Printed: 2017.11.21 @ 08:29:01

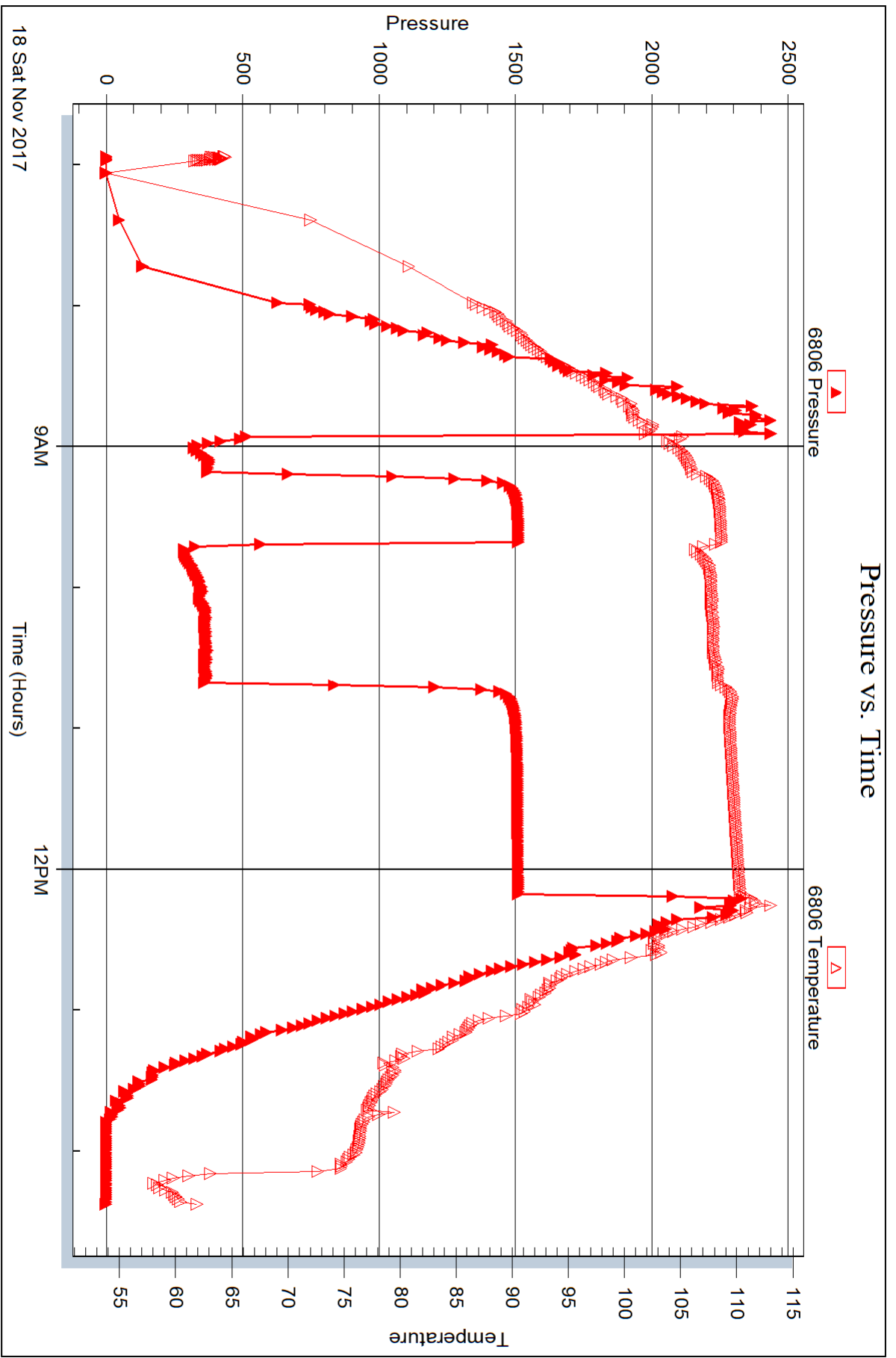
Serial #: 6806

Outside

Carmen Schmitt Inc

Welzel #1

DST Test Number: 2



Trilobite Testing, Inc

Ref. No: 63632

Printed: 2017.11.21 @ 08:29:01



DRILL STEM TEST REPORT

Prepared For: **Carmen Schmitt Inc**

PO Box 47
Great Bend, KS 67530

ATTN: Brad Rine

Wetzel #1

17-26S-20W Edwards,KS

Start Date: 2017.11.19 @ 03:44:15

End Date: 2017.11.19 @ 13:16:45

Job Ticket #: 63633 DST #: 3

Trilobite Testing, Inc
1515 Commerce Parkway Hays, KS 67601
ph: 785-625-4778 fax: 785-625-5620

Printed: 2017.11.21 @ 09:26:08

Carmen Schmitt Inc
17-26S-20W Edwards,KS
Wetzel #1
DST # 3
Mississippi
2017.11.19



**TRILOBITE
TESTING, INC.**

DRILL STEM TEST REPORT

TOOL DIAGRAM

Carmen Schmitt Inc
PO Box 47
Great Bend, KS 67530
ATTN: Brad Rine

17-26S-20W Edwards,KS
Wetzel #1
Job Ticket: 63633 **DST#: 3**
Test Start: 2017.11.19 @ 03:44:15

Tool Information

Drill Pipe:	Length: 4500.00 ft	Diameter: 3.80 inches	Volume: 63.12 bbl	Tool Weight:	2100.00 lb
Heavy Wt. Pipe:	Length: 0.00 ft	Diameter: 0.00 inches	Volume: 0.00 bbl	Weight set on Packer:	25000.00 lb
Drill Collar:	Length: 238.00 ft	Diameter: 2.25 inches	Volume: 1.17 bbl	Weight to Pull Loose:	70000.00 lb
			<u>Total Volume: 64.29 bbl</u>	Tool Chased	ft
Drill Pipe Above KB:	10.00 ft			String Weight: Initial	60000.00 lb
Depth to Top Packer:	4754.00 ft			Final	64000.00 lb
Depth to Bottom Packer:	ft				
Interval between Packers:	10.00 ft				
Tool Length:	36.00 ft				
Number of Packers:	2	Diameter: 6.75 inches			

Tool Comments: Dropped Bar, Reversed Out

Tool Description	Length (ft)	Serial No.	Position	Depth (ft)	Accum. Lengths
Shut In Tool	5.00			4733.00	
Hydraulic tool	5.00			4738.00	
Jars	5.00			4743.00	
Safety Joint	2.00			4745.00	
Packer	5.00			4750.00	26.00 Bottom Of Top Packer
Packer	4.00			4754.00	
Stubb	1.00			4755.00	
Recorder	0.00	6798	Inside	4755.00	
Recorder	0.00	6806	Outside	4755.00	
Perforations	6.00			4761.00	
Bullnose	3.00			4764.00	10.00 Bottom Packers & Anchor

Total Tool Length: 36.00



**TRILOBITE
TESTING, INC.**

DRILL STEM TEST REPORT

FLUID SUMMARY

Carmen Schmitt Inc
PO Box 47
Great Bend, KS 67530
ATTN: Brad Rine

17-26S-20W Edwards,KS
Wetzel #1
Job Ticket: 63633 **DST#: 3**
Test Start: 2017.11.19 @ 03:44:15

Mud and Cushion Information

Mud Type: Gel Chem	Cushion Type:	Oil API: 36.6 deg API
Mud Weight: 9.00 lb/gal	Cushion Length: ft	Water Salinity: 80000 ppm
Viscosity: 56.00 sec/qt	Cushion Volume: bbl	
Water Loss: 9.17 in ³	Gas Cushion Type:	
Resistivity: ohm.m	Gas Cushion Pressure: psig	
Salinity: 7950.00 ppm		
Filter Cake: 0.02 inches		

Recovery Information

Recovery Table

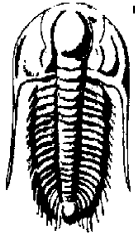
Length ft	Description	Volume bbl
120.00	Water	0.590
4618.00	GCO 20%G 80%O	63.703
0.00	GTS	0.000

Total Length: 4738.00 ft Total Volume: 64.293 bbl

Num Fluid Samples: 0 Num Gas Bombs: 0 Serial #:

Laboratory Name: Laboratory Location:

Recovery Comments: Gravity was 36.4 @ 58 degrees
RW was .1 @ 68 degrees



**TRILOBITE
TESTING, INC.**

DRILL STEM TEST REPORT

GAS RATES

Carmen Schmitt Inc
PO Box 47
Great Bend, KS 67530
ATTN: Brad Rine

17-26S-20W Edwards,KS

Wetzel #1

Job Ticket: 63633

DST#: 3

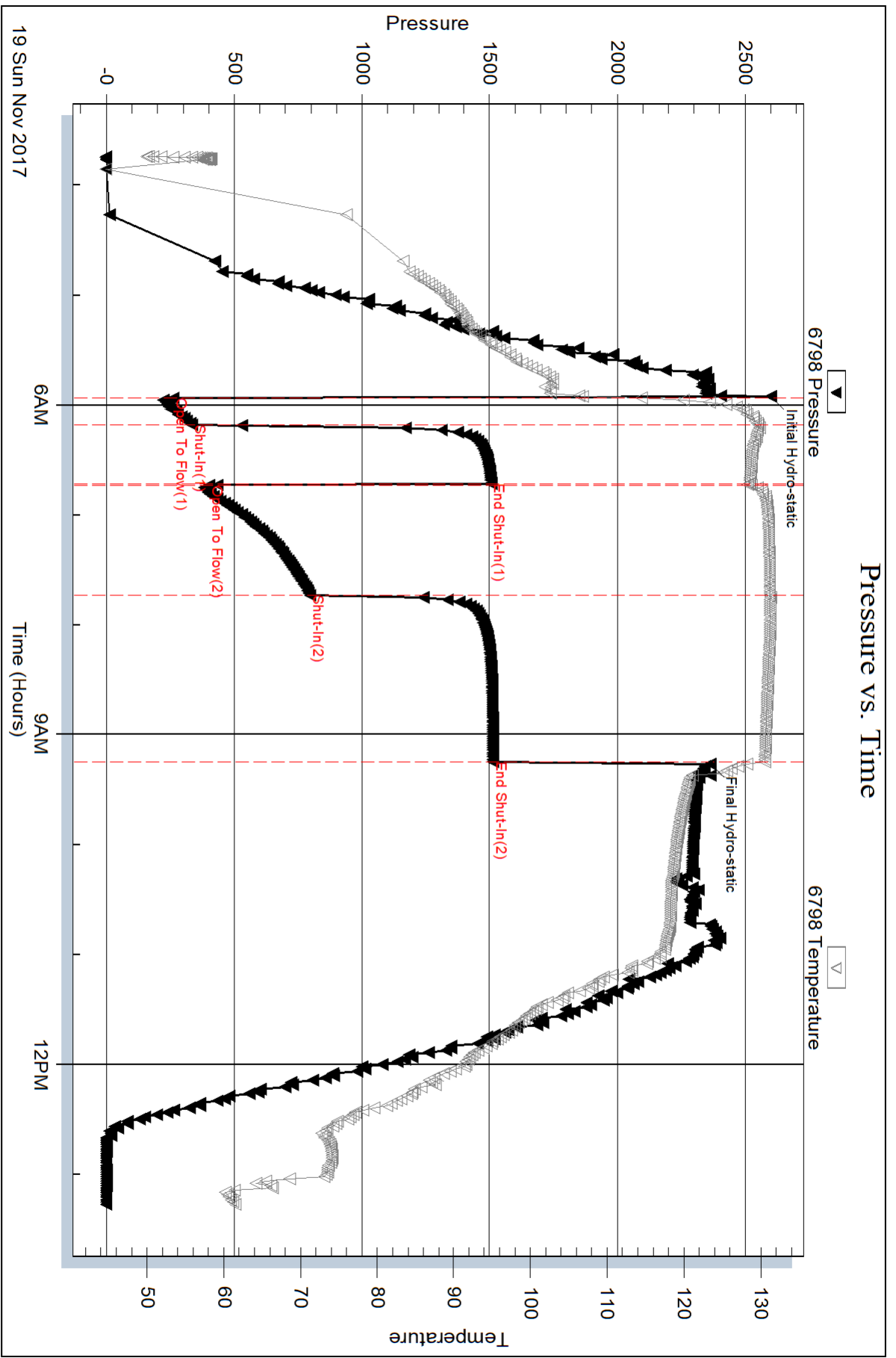
Test Start: 2017.11.19 @ 03:44:15

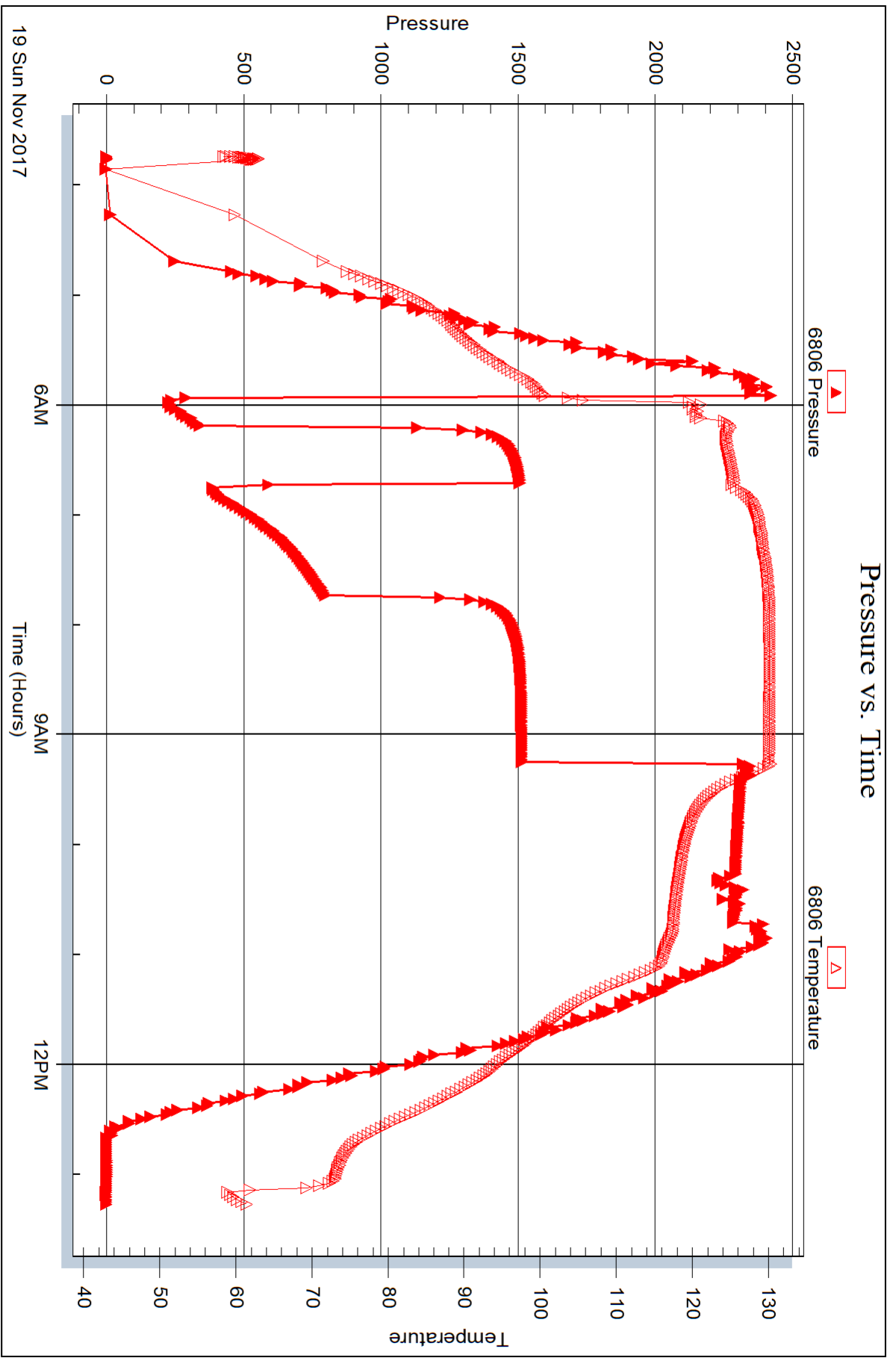
Gas Rates Information

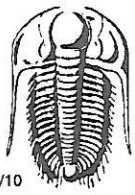
Temperature: 59 (deg F)
Relative Density: 0.65
Z Factor: 0.8

Gas Rates Table

Flow Period	Elapsed Time	Choke (inches)	Pressure (psig)	Gas Rate (Mcf/d)
1	10	0.50	8.00	53.97
1	15	0.50	10.00	67.46
2	10	0.25	28.00	44.42
2	20	0.25	40.00	63.46
2	30	0.25	45.00	71.39
2	40	0.25	35.00	55.52
2	50	0.25	25.00	39.66
2	60	0.25	20.00	31.73







TRILOBITE TESTING INC.

1515 Commerce Parkway • Hays, Kansas 67601

Test Ticket

NO. **63631**

Well Name & No. Wetzel 1 Test No. 1 Date 11/17/17
 Company Carmen Schmitt Inc Elevation 2249 KB 2244 GL
 Address PO Box 47 Great Bend, KS 67530
 Co. Rep / Geo. Brad Rine Rig Murfin 16
 Location: Sec. 17 Twp. 26S Rge. 20W Co. Edwards State KS

Interval Tested 4667 - 4746 Zone Tested Mississippi
 Anchor Length 79 Drill Pipe Run 4436 Mud Wt. 8.8
 Top Packer Depth 4662 Drill Collars Run 238 Vis 56
 Bottom Packer Depth 4667 Wt. Pipe Run 0 WL 9.2
 Total Depth 4746 Chlorides 7950 ppm System LCM 1

Blow Description IF: Fair Blow, BOB in 16 minutes
ISI: NO Blow Back
FF: Strong Blow, BOB in 20 seconds
F5F: No Blow Back

Rec	Feet of	%gas	%oil	%water	%mud
<u>2520</u>	<u>GIP</u>				
<u>60</u>	<u>SGCM</u>	<u>2</u>			<u>98</u>

Rec Total 60 BHT 116 Gravity NIC API RW NIC @ NIC F Chlorides NIC ppm

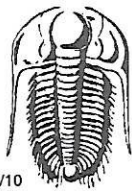
(A) Initial Hydrostatic 2417 Test 1150 T-On Location 14:00
 (B) First Initial Flow 63 Jars 250 T-Started 14:53
 (C) First Final Flow 83 Safety Joint 75 T-Open 16:37
 (D) Initial Shut-In 253 Circ Sub _____ T-Pulled 20:26
 (E) Second Initial Flow 54 Hourly Standby _____ T-Out 22:11
 (F) Second Final Flow 74 Mileage 160 120 Comments _____
 (G) Final Shut-In 381 Sampler _____
 (H) Final Hydrostatic 2427 Straddle _____
 Shale Packer _____
 Extra Packer _____
 Extra Recorder _____
 Day Standby _____
 Accessibility _____

Initial Open 30
 Initial Shut-In 45
 Final Flow 60
 Final Shut-In 90

Sub Total 1595
 Sub Total 0
 Total 1595.00
 MP/DST Disc't _____

Approved By Brad Rine Our Representative [Signature]

Trilobite Testing Inc. shall not be liable for damaged of any kind of the property or personnel of the one for whom a test is made, or for any loss suffered or sustained, directly or indirectly, through the use of its equipment, or its statements or opinion concerning the results of any test, tools lost or damaged in the hole shall be paid for at cost by the party for whom the test is made.



TRILOBITE TESTING INC.

1515 Commerce Parkway • Hays, Kansas 67601

Test Ticket

NO. **63632**

Well Name & No. Wetzel 1 Test No. 2 Date 11/18/17
 Company Carmen Schmitt Elevation 2249 KB 2244 GL
 Address PO Box 47 Great Bend, KS 67530
 Co. Rep/Geo. Brad Rine Rig Martin 16
 Location: Sec. 17 Twp. 26S Rge. 20W Co. Edwards State KS

Interval Tested 4667 - 4754 Zone Tested Mississippi
 Anchor Length 87 Drill Pipe Run 4468 Mud Wt. 8.8
 Top Packer Depth 4662 Drill Collars Run 180 Vis 56
 Bottom Packer Depth 4667 Wt. Pipe Run _____ WL 9.2
 Total Depth 4754 Chlorides 7950 ppm System LCM 1

Blow Description IF: Strong Blow, BOB in 30 seconds, GTS in 3 minutes, gauged & caught sample
ISI: NO Blow Back

FF: Strong Blow, BOB + GTS Immediate, Gauged Gas

FSI: Weak Surface Blow Back

Rec	Feet of	%gas	%oil	%water	%mud
<u>4365</u>	<u>GIP</u>				
<u>165</u>	<u>506CM</u>	<u>5</u>	<u>10</u>		<u>85</u>
<u>118</u>	<u>600CM</u>	<u>16</u>	<u>20</u>	<u>14</u>	<u>50</u>
____	____	____	____	____	____
____	____	____	____	____	____

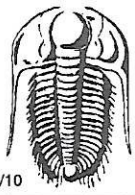
Rec Total 283 BHT 114 Gravity NIC API RW NIC @ NIC °F Chlorides NIC ppm

(A) Initial Hydrostatic 2438 Test 1150 T-On Location 06:30
 (B) First Initial Flow 508 ~~508~~ Jars 250 T-Started 06:56
 (C) First Final Flow 372 Safety Joint 75 T-Open 08:54
 (D) Initial Shut-In 1512 Circ Sub _____ T-Pulled 12:09
 (E) Second Initial Flow 283 Hourly Standby _____ T-Out 14:21
 (F) Second Final Flow 357 Mileage 1609 120 Comments _____
 (G) Final Shut-In 1510 Sampler _____
 (H) Final Hydrostatic 2388 Straddle _____

Ruined Shale Packer _____
 Shale Packer _____
 Ruined Packer _____
 Extra Packer _____
 Extra Copies _____
 Extra Recorder _____
 Day Standby _____
 Accessibility _____
 Sub Total 1595 Sub Total _____
 Total 1595.00 Total _____
 MP/DST Disc't _____

Approved By Brad Rine Our Representative _____

Trilobite Testing Inc. shall not be liable for damaged of any kind of the property or personnel of the one for whom a test is made, or for any loss suffered or sustained, directly or indirectly, through the use of its equipment, or its statements or opinion concerning the results of any test, tools lost or damaged in the hole shall be paid for at cost by the party for whom the test is made.



TRILOBITE TESTING INC.

1515 Commerce Parkway • Hays, Kansas 67601

Test Ticket

NO. **63633**

Well Name & No. Wetzel 1 Test No. 3 Date 11/19/17
 Company Carmen Schmitt Inc Elevation 2249 KB 2244 GL
 Address PO BOX 47 Great Bend, KS 67530
 Co. Rep / Geo. Brad Rine Rig Murfin 16
 Location: Sec. 17 Twp. 26S Rge. 20W Co. Edwards State KS

Interval Tested 4754 - 4764 Zone Tested Mississippi
 Anchor Length 10 Drill Pipe Run ~~4500~~ 4500 Mud Wt. 8.8
 Top Packer Depth 4749 Drill Collars Run 238 Vis 56
 Bottom Packer Depth 4754 Wt. Pipe Run 0 WL 8.4
 Total Depth 4764 Chlorides 6800 ppm System LCM 2

Blow Description IF: Strong Blow, BOB in 30 seconds, GTS in 8 minutes, Gauged + caught sample
ISI: Blow Back Built to 6 inches

FF: Strong Blow, BOB + GTS Immediate, Gauged Gas

FST: OTS During Bleed off

Rec	Feet of	%gas	%oil	%water	%mud
<u>4618</u>	<u>600</u>	<u>20</u>	<u>80</u>		
<u>120</u>	<u>Water</u>				

Rec Total 4738 BHT 130 Gravity 36.6 API RW .1 @ 68 °F Chlorides 80,000 ppm

(A) Initial Hydrostatic <u>2599</u>	<input checked="" type="checkbox"/> Test <u>1150</u>	T-On Location <u>02:00</u>
(B) First Initial Flow <u>262</u>	<input checked="" type="checkbox"/> Jars <u>250</u>	T-Started <u>03:44</u>
(C) First Final Flow <u>336</u>	<input checked="" type="checkbox"/> Safety Joint <u>75</u>	T-Open <u>05:56</u>
(D) Initial Shut-In <u>1507</u>	<input checked="" type="checkbox"/> Circ Sub <u>50</u>	T-Pulled <u>09:14</u>
(E) Second Initial Flow <u>401</u>	<input type="checkbox"/> Hourly Standby	T-Out <u>13:16</u>
(F) Second Final Flow <u>796</u>	<input checked="" type="checkbox"/> Mileage <u>160</u> <u>120</u>	Comments <u>Dropped Bar, Reverted</u>
(G) Final Shut-In <u>1513</u>	<input type="checkbox"/> Sampler	<u>OUT</u>
(H) Final Hydrostatic <u>2363</u>	<input type="checkbox"/> Straddle	<input type="checkbox"/> Ruined Shale Packer

Initial Open 15
 Initial Shut-In 30
 Final Flow _____
 Final Shut-In _____

Shale Packer _____
 Extra Packer _____
 Extra Recorder _____
 Day Standby _____
 Accessibility _____

Sub Total 1645

Sub Total 0
 Total 1645.00
 MP/DST Disc't _____

Approved By Brad Rine Our Representative [Signature]

Trilobite Testing Inc. shall not be liable for damaged of any kind of the property or personnel of the one for whom a test is made, or for any loss suffered or sustained, directly or indirectly, through the use of its equipment, or its statements or opinion concerning the results of any test, tools lost or damaged in the hole shall be paid for at cost by the party for whom the test is made.

