



DRILL STEM TEST REPORT

Prepared For: **Lotus Operating Co**

100 S Main Ste 420
Wichita, KS 67202

ATTN: Tim Hellman

1 Ron Piester

14-29S-16W Kiowa

Start Date: 2017.10.14 @ 05:15:22

End Date: 2017.10.14 @ 14:33:22

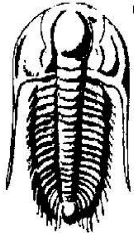
Job Ticket #: 57838 **DST #: 2**

Trilobite Testing, Inc

PO Box 362 Hays, KS 67601

ph: 785-625-4778 fax: 785-625-5620

Printed: 2017.10.14 @ 14:53:40



**TRILOBITE
TESTING, INC.**

DRILL STEM TEST REPORT

Lotus Operating Co
100 S Main Ste 420
Wichita, KS 67202
ATTN: Tim Hellman

14-29S-16W Kiowa
1 Ron Piester
Job Ticket: 57838 **DST#: 2**
Test Start: 2017.10.14 @ 05:15:22

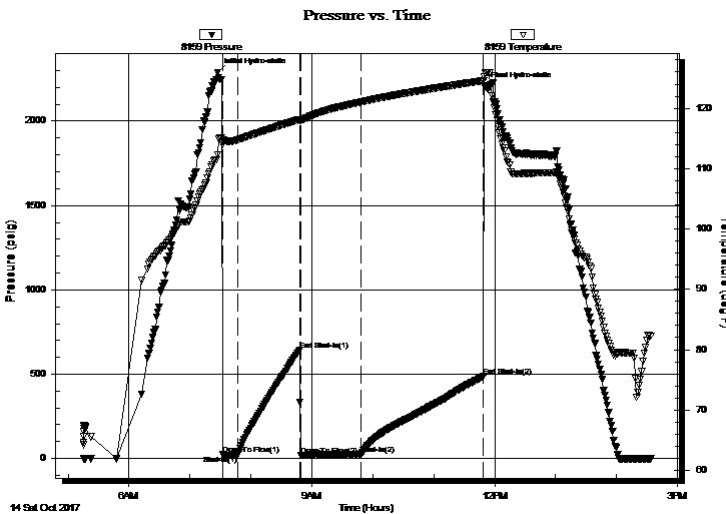
GENERAL INFORMATION:

Formation: **Mississippi**
Deviated: No Whipstock: ft (KB)
Time Tool Opened: 07:32:07
Time Test Ended: 14:33:22
Interval: **4658.00 ft (KB) To 4700.00 ft (KB) (TVD)**
Total Depth: 4700.00 ft (KB) (TVD)
Hole Diameter: 7.88 inches Hole Condition: Good
Test Type: Conventional Bottom Hole (Reset)
Tester: Leal Cason
Unit No: 74
Reference Elevations: 2035.00 ft (KB)
2027.00 ft (CF)
KB to GR/CF: 8.00 ft

Serial #: 8159 Inside
Press@RunDepth: 23.87 psig @ 4659.00 ft (KB) Capacity: 8000.00 psig
Start Date: 2017.10.14 End Date: 2017.10.14 Last Calib.: 2017.10.14
Start Time: 05:15:23 End Time: 14:33:22 Time On Btm: 2017.10.14 @ 07:27:07
Time Off Btm: 2017.10.14 @ 11:49:37

TEST COMMENT: IF: Fair Blow , BOB in 12 minutes
IS: Weak Surface Blow Back
FF: Strong Blow , BOB in 10 seconds
FS: 1/2 inch Blow Back

PRESSURE SUMMARY



Time (Min.)	Pressure (psig)	Temp (deg F)	Annotation
0	2289.01	112.25	Initial Hydro-static
5	24.95	113.94	Open To Flow (1)
21	17.29	114.77	Shut-In(1)
81	642.76	118.16	End Shut-In(1)
82	18.11	118.03	Open To Flow (2)
142	23.87	121.03	Shut-In(2)
262	486.31	124.56	End Shut-In(2)
263	2207.53	125.23	Final Hydro-static

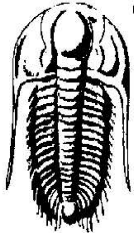
Recovery

Length (ft)	Description	Volume (bbl)
0.00	950 GIP	0.00
42.00	GOCM 2%G 10%O 88%M	0.59

* Recovery from multiple tests

Gas Rates

Choke (inches)	Pressure (psig)	Gas Rate (Mcf/d)



**TRILOBITE
TESTING, INC.**

DRILL STEM TEST REPORT

FLUID SUMMARY

Lotus Operating Co

14-29S-16W Kiowa

100 S Main Ste 420
Wichita, KS 67202

1 Ron Piester

Job Ticket: 57838

DST#: 2

ATTN: Tim Hellman

Test Start: 2017.10.14 @ 05:15:22

Mud and Cushion Information

Mud Type: Gel Chem

Cushion Type:

Oil API:

deg API

Mud Weight: 9.00 lb/gal

Cushion Length:

ft

Water Salinity:

ppm

Viscosity: 52.00 sec/qt

Cushion Volume:

bbbl

Water Loss: 10.38 in³

Gas Cushion Type:

Resistivity: ohm.m

Gas Cushion Pressure:

psig

Salinity: 6000.00 ppm

Filter Cake: 0.02 inches

Recovery Information

Recovery Table

Length ft	Description	Volume bbbl
0.00	950 GIP	0.000
42.00	GOCM 2%G 10%O 88%M	0.589

Total Length: 42.00 ft Total Volume: 0.589 bbl

Num Fluid Samples: 0

Num Gas Bombs: 0

Serial #:

Laboratory Name:

Laboratory Location:

Recovery Comments:

