



TRILOBITE TESTING, INC.

DRILL STEM TEST REPORT

Woolsey Operating Co., LLC.

27-27S-20W Kiowa KS

125 N Market STE 1000
Wichita KS 67202+1729

Janssen #1

Job Ticket: 63752

DST#: 1

ATTN: Bill Klaver

Test Start: 2018.02.21 @ 21:51:00

GENERAL INFORMATION:

Formation: **Mississippian**

Deviated: No Whipstock: ft (KB)

Time Tool Opened: 01:07:00

Time Test Ended: 07:20:00

Test Type: Conventional Bottom Hole (Initial)

Tester: Spencer J. Staab

Unit No: 84

Interval: 4796.00 ft (KB) To 4882.00 ft (KB) (TVD)

Reference Elevations: 2294.00 ft (KB)

Total Depth: 4882.00 ft (KB) (TVD)

2282.00 ft (CF)

Hole Diameter: 7.88 inches Hole Condition: Fair

KB to GR/CF: 12.00 ft

Serial #: 8934 Outside

Press@RunDepth: 69.74 psig @ 4863.00 ft (KB)

Capacity: 8000.00 psig

Start Date: 2018.02.21

End Date:

2018.02.22

Last Calib.:

2018.02.22

Start Time: 21:51:15

End Time:

07:20:00

Time On Btm:

2018.02.22 @ 01:06:30

Time Off Btm:

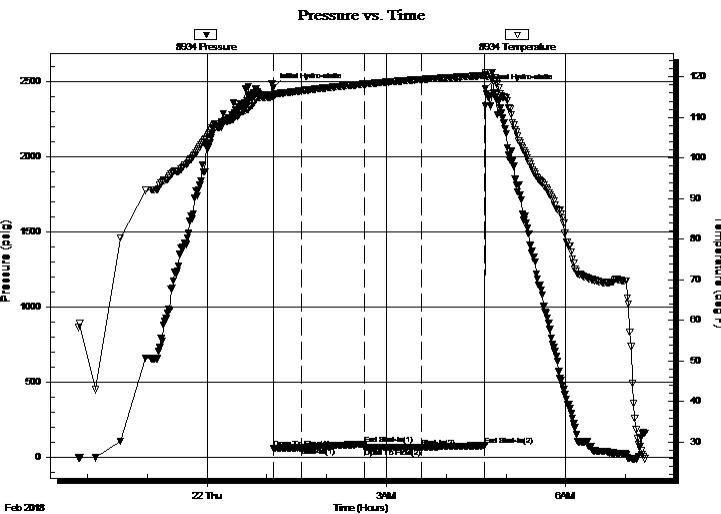
2018.02.22 @ 04:39:15

TEST COMMENT: 30-IF-Weak Blow ; Built to 1"

60-ISI-No Return

60-FF-Weak Blow ; Built to 1/2"

60-FSI-No Return



PRESSURE SUMMARY

Time (Min.)	Pressure (psig)	Temp (deg F)	Annotation
0	2460.54	115.60	Initial Hydro-static
1	59.99	115.23	Open To Flow (1)
29	65.97	116.57	Shut-In(1)
92	89.59	118.20	End Shut-In(1)
92	63.96	118.20	Open To Flow (2)
149	69.74	119.35	Shut-In(2)
212	80.00	120.32	End Shut-In(2)
213	2452.96	120.52	Final Hydro-static

Recovery

Length (ft)	Description	Volume (bbl)
20.00	Mud 100%M	0.10

Gas Rates

Choke (inches)	Pressure (psig)	Gas Rate (Mcf/d)



TRILOBITE TESTING, INC.

DRILL STEM TEST REPORT

Woolsey Operating Co., LLC.
 125 N Market STE 1000
 Wichita KS 67202+1729
 ATTN: Bill Klaver

27-27S-20W Kiowa KS
Janssen #1
 Job Ticket: 63752 **DST#: 1**
 Test Start: 2018.02.21 @ 21:51:00

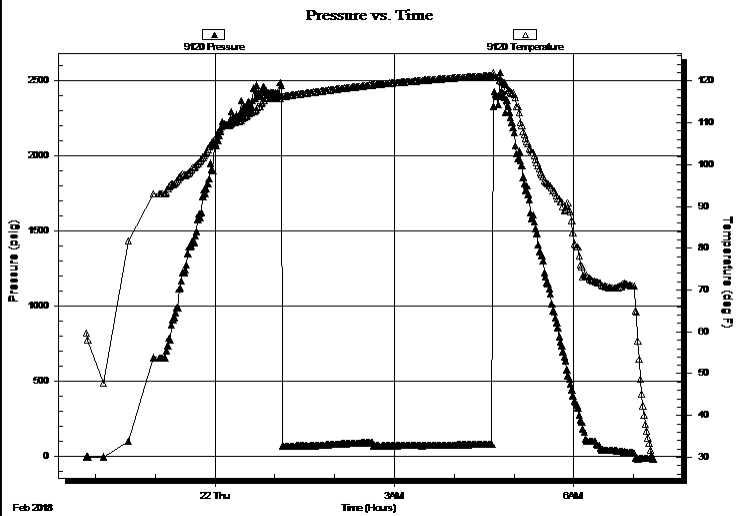
GENERAL INFORMATION:

Formation: Mississippian	Whipstock: ft (KB)	Test Type: Conventional Bottom Hole (Initial)
Deviated: No		Tester: Spencer J. Staab
Time Tool Opened: 01:07:00		Unit No: 84
Time Test Ended: 07:20:00		Reference Elevations: 2294.00 ft (KB)
Interval: 4796.00 ft (KB) To 4882.00 ft (KB) (TVD)		2282.00 ft (CF)
Total Depth: 4882.00 ft (KB) (TVD)		KB to GR/CF: 12.00 ft
Hole Diameter: 7.88 inches	Hole Condition: Fair	

Serial #: 9120 Inside

Press@RunDepth: psig @ 4863.00 ft (KB)	Capacity: 8000.00 psig
Start Date: 2018.02.21 End Date: 2018.02.22	Last Calib.: 2018.02.22
Start Time: 21:51:15 End Time: 07:20:00	Time On Btm:
	Time Off Btm:

TEST COMMENT: 30-IF-Weak Blow ; Built to 1"
 60-ISI-No Return
 60-FF-Weak Blow ; Built to 1/2"
 60-FSI-No Return



PRESSURE SUMMARY

Time (Min.)	Pressure (psig)	Temp (deg F)	Annotation

Recovery

Length (ft)	Description	Volume (bbl)
20.00	Mud 100%M	0.10

Gas Rates

	Choke (inches)	Pressure (psig)	Gas Rate (Mcf/d)



**TRILOBITE
TESTING, INC.**

DRILL STEM TEST REPORT

FLUID SUMMARY

Woolsey Operating Co., LLC.

27-27S-20W Kiowa KS

125 N Market STE 1000
Wichita KS 67202+1729

Janssen #1

Job Ticket: 63752

DST#: 1

ATTN: Bill Klaver

Test Start: 2018.02.21 @ 21:51:00

Mud and Cushion Information

Mud Type: Gel Chem

Cushion Type:

Oil API:

deg API

Mud Weight: 9.00 lb/gal

Cushion Length:

ft

Water Salinity:

ppm

Viscosity: 67.00 sec/qt

Cushion Volume:

bbl

Water Loss: 8.79 in³

Gas Cushion Type:

Resistivity: ohm.m

Gas Cushion Pressure:

psig

Salinity: 5000.00 ppm

Filter Cake: inches

Recovery Information

Recovery Table

Length ft	Description	Volume bbl
20.00	Mud 100%M	0.098

Total Length: 20.00 ft Total Volume: 0.098 bbl

Num Fluid Samples: 0

Num Gas Bombs: 0

Serial #:

Laboratory Name:

Laboratory Location:

Recovery Comments: 2&1/2#LCM

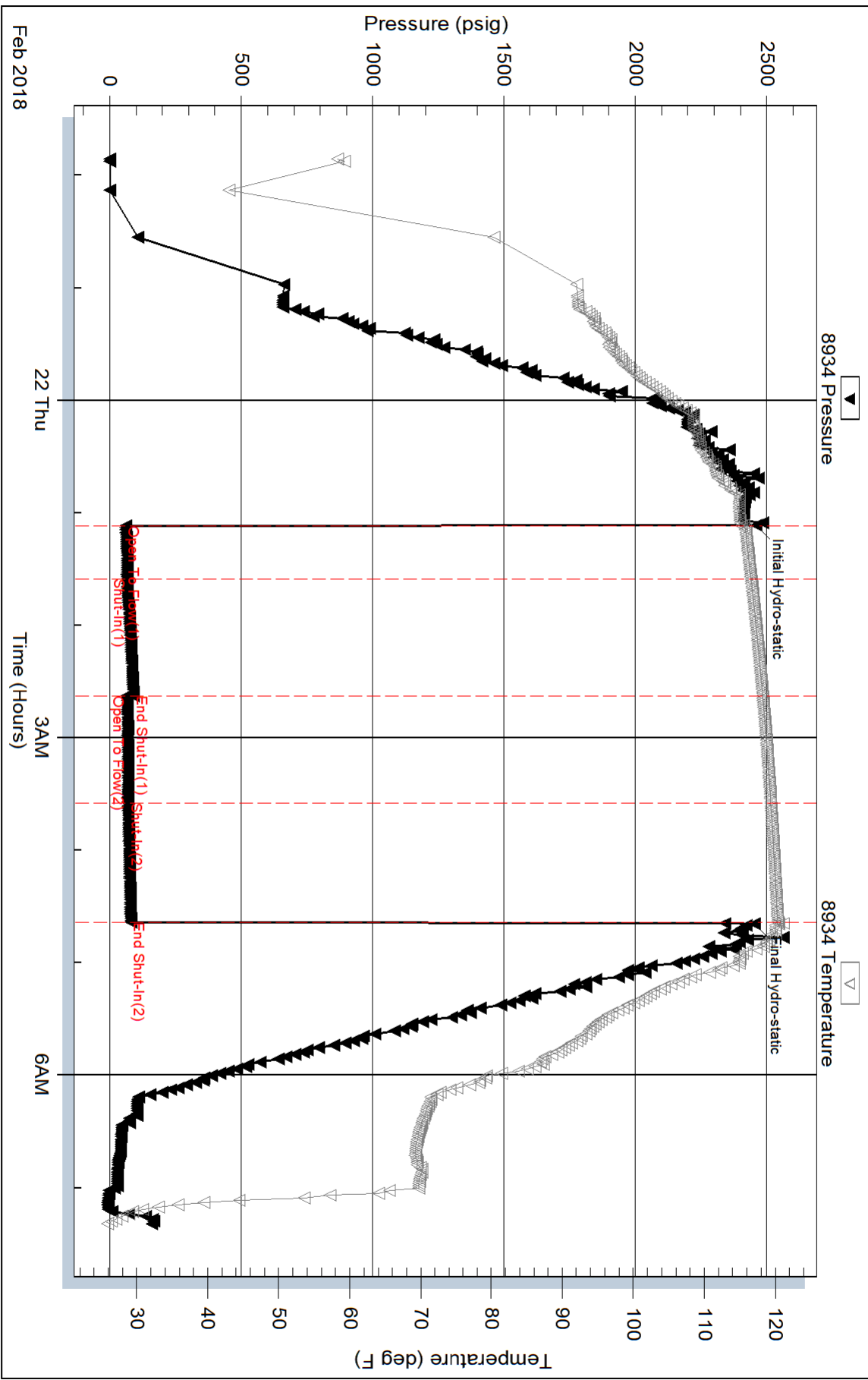
Serial #: 8934

Outside Woodsey Operating Co., LLC

Janssen #1

DST Test Number: 1

Pressure vs. Time



Triobite Testing, Inc

Ref. No: 63752

Printed: 2018.02.22 @ 09:17:30

Serial #: 9120

Inside

Woodsey Operating Co., LLC

Janssen #1

DST Test Number: 1

