



**TRILOBITE TESTING, INC.**

# DRILL STEM TEST REPORT

Jolen Operating Co

**34-29S-22W Ford**

100 N Broadway Ste 2460  
Oklahoma City, OK 73102

**Kregar 1-34**

Job Ticket: 63361

**DST#: 2**

ATTN: Austin Garner/Dennis

Test Start: 2018.02.13 @ 05:14:37

## GENERAL INFORMATION:

Formation: **Mississippi**

Deviated: No Whipstock: ft (KB)

Time Tool Opened: 07:59:24

Time Test Ended: 14:10:39

Test Type: Conventional Straddle (Reset)

Tester: Leal Cason

Unit No: 74

**Interval: 5300.00 ft (KB) To 5335.00 ft (KB) (TVD)**

Reference Elevations: 2430.00 ft (KB)

Total Depth: 5445.00 ft (KB) (TVD)

2417.00 ft (CF)

Hole Diameter: 7.88 inches Hole Condition: Good

KB to GR/CF: 13.00 ft

**Serial #: 8875**

**Inside**

Press@RunDepth: 100.57 psig @ 5301.00 ft (KB)

Capacity: psig

Start Date: 2018.02.13

End Date:

2018.02.13

Last Calib.:

2018.02.13

Start Time: 05:14:38

End Time:

14:10:39

Time On Btm:

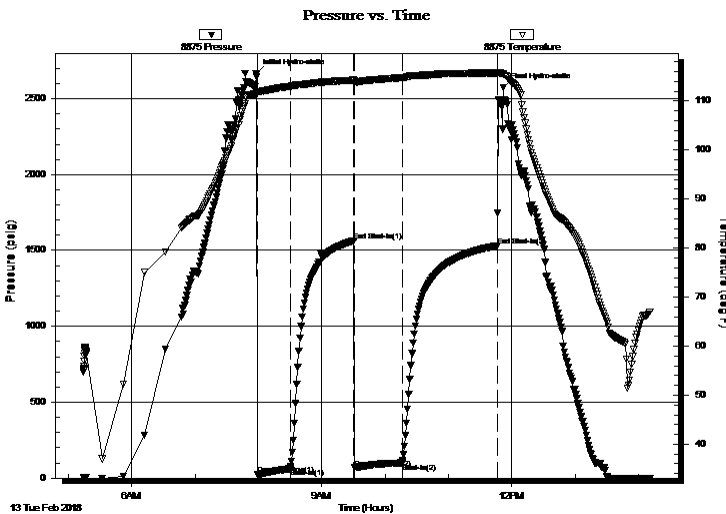
2018.02.13 @ 07:57:54

Time Off Btm:

2018.02.13 @ 11:52:09

**TEST COMMENT:** IF: Fair Blow, BOB in 20 minutes, Built to 11"  
IS: No Blow Back  
FF: Fair Blow, BOB in 26 minutes, Built to 16"  
FS: No Blow Back

## PRESSURE SUMMARY



Time (Min.)	Pressure (psig)	Temp (deg F)	Annotation
0	2662.09	111.48	Initial Hydro-static
2	24.11	111.56	Open To Flow (1)
32	62.34	113.00	Shut-In(1)
93	1563.89	114.20	End Shut-In(1)
94	67.89	113.78	Open To Flow (2)
138	100.57	114.73	Shut-In(2)
229	1531.02	115.76	End Shut-In(2)
235	2572.87	115.44	Final Hydro-static

## Recovery

Length (ft)	Description	Volume (bbl)
121.00	MCW 10%M 90%W	0.60
65.00	SOWCM 2%O 48%W 50%M	0.37

## Gas Rates

	Choke (inches)	Pressure (psig)	Gas Rate (MMcf/d)

\* Recovery from multiple tests



**TRILOBITE TESTING, INC.**

# DRILL STEM TEST REPORT

Jolen Operating Co

100 N Broadway Ste 2460  
Oklahoma City, OK 73102

ATTN: Austin Garner/Dennis

**34-29S-22W Ford**

**Kregar 1-34**

Job Ticket: 63361

**DST#: 2**

Test Start: 2018.02.13 @ 05:14:37

## GENERAL INFORMATION:

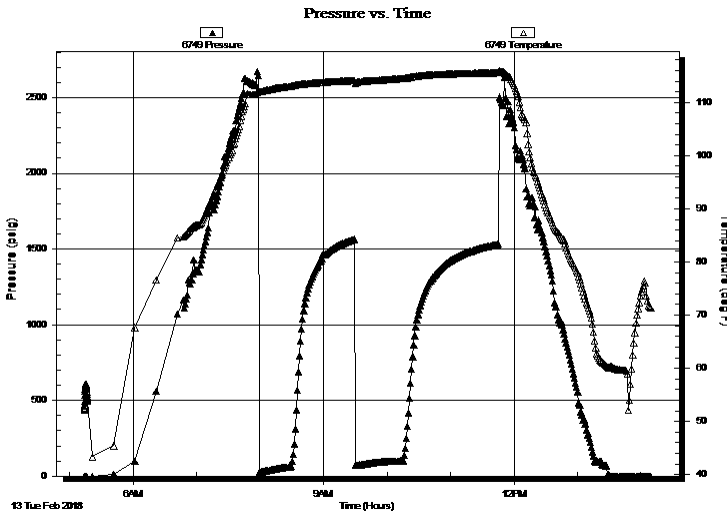
Formation:	<b>Mississippi</b>	Test Type:	Conventional Straddle (Reset)
Deviated:	No Whipstock:	Tester:	Leal Cason
	ft (KB)	Unit No:	74
Time Tool Opened:	07:59:24	Reference Elevations:	2430.00 ft (KB)
Time Test Ended:	14:10:39		2417.00 ft (CF)
<b>Interval:</b>	<b>5300.00 ft (KB) To 5335.00 ft (KB) (TVD)</b>	KB to GR/CF:	13.00 ft
Total Depth:	5445.00 ft (KB) (TVD)		
Hole Diameter:	7.88 inches Hole Condition: Good		

## Serial #: 6749

**Outside**

Press@RunDepth:	psig @ 5301.00 ft (KB)	Capacity:	psig
Start Date:	2018.02.13	End Date:	2018.02.13
Start Time:	05:14:07	End Time:	14:10:08
		Last Calib.:	2018.02.13
		Time On Btm:	
		Time Off Btm:	

**TEST COMMENT:** IF: Fair Blow , BOB in 20 minutes, Built to 11"  
 IS: No Blow Back  
 FF: Fair Blow , BOB in 26 minutes, Built to 16"  
 FS: No Blow Back



## PRESSURE SUMMARY

Time (Min.)	Pressure (psig)	Temp (deg F)	Annotation

## Recovery

Length (ft)	Description	Volume (bbl)
121.00	MCW 10%M 90%W	0.60
65.00	SOWCM 2%O 48%W 50%M	0.37

\* Recovery from multiple tests

## Gas Rates

Choke (inches)	Pressure (psig)	Gas Rate (MMcf/d)



**TRILOBITE**  
**TESTING, INC.**

# DRILL STEM TEST REPORT

Jolen Operating Co

100 N Broadway Ste 2460  
Oklahoma City, OK 73102

ATTN: Austin Garner/Dennis

**34-29S-22W Ford**

**Kregar 1-34**

Job Ticket: 63361

**DST#: 2**

Test Start: 2018.02.13 @ 05:14:37

## GENERAL INFORMATION:

Formation: **Mississippi**

Deviated: No Whipstock: ft (KB)

Time Tool Opened: 07:59:24

Time Test Ended: 14:10:39

Test Type: Conventional Straddle (Reset)

Tester: Leal Cason

Unit No: 74

**Interval: 5300.00 ft (KB) To 5335.00 ft (KB) (TVD)**

Reference Elevations: 2430.00 ft (KB)

Total Depth: 5445.00 ft (KB) (TVD)

2417.00 ft (CF)

Hole Diameter: 7.88 inches Hole Condition: Good

KB to GR/CF: 13.00 ft

**Serial #: 8159 Below (Straddle)**

Press@RunDepth: psig @ 5343.00 ft (KB)

Capacity: psig

Start Date: 2018.02.13

End Date: 2018.02.13

Last Calib.: 2018.02.13

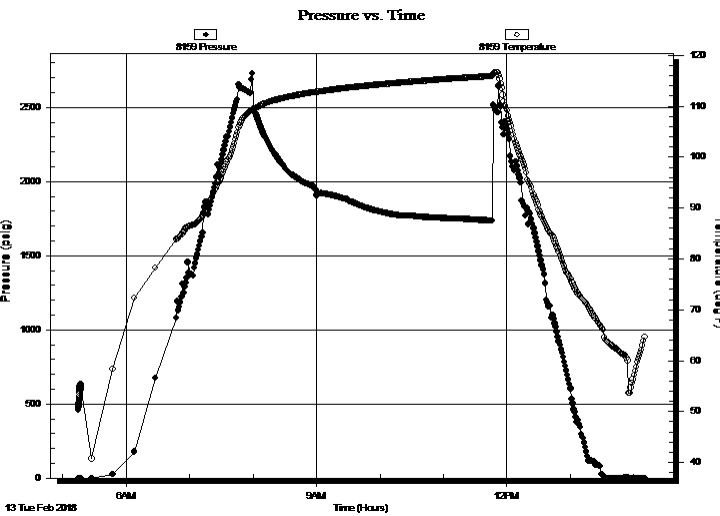
Start Time: 05:14:54

End Time: 14:10:55

Time On Btm:

Time Off Btm:

**TEST COMMENT:** IF: Fair Blow , BOB in 20 minutes, Built to 11"  
IS: No Blow Back  
FF: Fair Blow , BOB in 26 minutes, Built to 16"  
FS: No Blow Back



## PRESSURE SUMMARY

Time (Min.)	Pressure (psig)	Temp (deg F)	Annotation

## Recovery

## Gas Rates

Length (ft)	Description	Volume (bbl)
121.00	MCW 10%M 90%W	0.60
65.00	SOWCM 2%O 48%W 50%M	0.37

	Choke (inches)	Pressure (psig)	Gas Rate (MMcf/d)

\* Recovery from multiple tests



**TRILOBITE  
TESTING, INC.**

# DRILL STEM TEST REPORT

**FLUID SUMMARY**

Jolen Operating Co

**34-29S-22W Ford**

100 N Broadway Ste 2460  
Oklahoma City, OK 73102

**Kregar 1-34**

Job Ticket: 63361

**DST#: 2**

ATTN: Austin Garner/Dennis

Test Start: 2018.02.13 @ 05:14:37

## Mud and Cushion Information

Mud Type: Gel Chem

Cushion Type:

Oil API:

deg API

Mud Weight: 9.00 lb/gal

Cushion Length:

ft

Water Salinity:

59000 ppm

Viscosity: 60.00 sec/qt

Cushion Volume:

bbbl

Water Loss: 8.79 in<sup>3</sup>

Gas Cushion Type:

Resistivity: ohm.m

Gas Cushion Pressure:

psig

Salinity: 8500.00 ppm

Filter Cake: 0.02 inches

## Recovery Information

Recovery Table

Length ft	Description	Volume bbl
121.00	MCW 10%M 90%W	0.595
65.00	SOWCM 2%O 48%W 50%M	0.365

Total Length: 186.00 ft      Total Volume: 0.960 bbl

Num Fluid Samples: 0

Num Gas Bombs: 0

Serial #:

Laboratory Name:

Laboratory Location:

Recovery Comments: RW was .18 @ 50 degrees

