



**TRILOBITE
TESTING, INC.**

DRILL STEM TEST REPORT

Berexco, LLC
2020 N. Bramblewood
Wichita, KS 67206
ATTN: Bryan Bynog

8/3s/35w Rawlins KS
Pochop #1-8
Job Ticket: 63428 **DST#: 4**
Test Start: 2017.11.16 @ 16:55:00

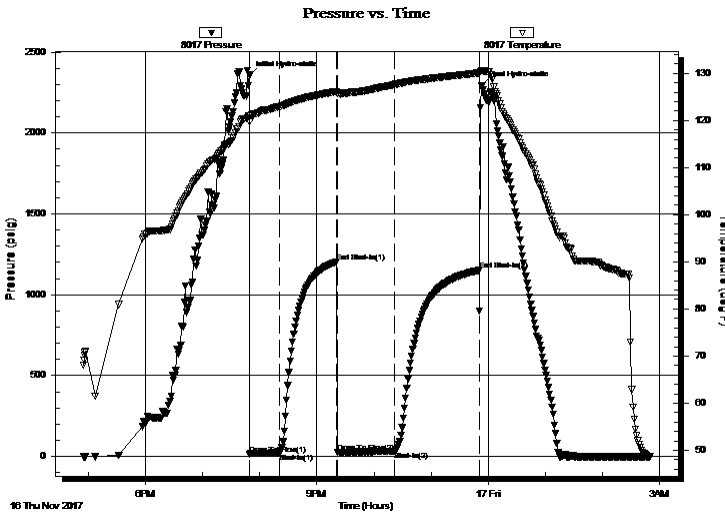
GENERAL INFORMATION:

Formation: **Ft. Scott**
Deviated: No Whipstock: ft (KB)
Time Tool Opened: 19:49:45
Time Test Ended: 02:49:45
Interval: **4520.00 ft (KB) To 4571.00 ft (KB) (TVD)**
Total Depth: 4571.00 ft (KB) (TVD)
Hole Diameter: 7.88 inches Hole Condition: Fair
Test Type: Conventional Bottom Hole (Reset)
Tester: James Winder
Unit No: 83
Reference Elevations: 3250.00 ft (KB)
3242.00 ft (CF)
KB to GR/CF: 8.00 ft

Serial #: 8017 Outside
Press@RunDepth: 31.28 psig @ 4521.00 ft (KB) Capacity: 8000.00 psig
Start Date: 2017.11.16 End Date: 2017.11.17 Last Calib.: 2017.11.17
Start Time: 16:55:05 End Time: 02:49:45 Time On Btm: 2017.11.16 @ 19:49:30
Time Off Btm: 2017.11.16 @ 23:53:15

TEST COMMENT: 30 - IF: 1/4" Blow at open, built to 1"
60 - IS: No blow back
60 - FF: No blow
90 - FS: No blow

PRESSURE SUMMARY



Time (Min.)	Pressure (psig)	Temp (deg F)	Annotation
0	2356.97	121.06	Initial Hydro-static
1	13.76	119.78	Open To Flow (1)
31	22.12	122.91	Shut-In(1)
92	1203.99	126.16	End Shut-In(1)
92	25.23	125.74	Open To Flow (2)
152	31.28	127.62	Shut-In(2)
241	1151.19	130.07	End Shut-In(2)
244	2294.20	130.62	Final Hydro-static

Recovery

Length (ft)	Description	Volume (bbl)
45.00	Mud 100%	0.22

* Recovery from multiple tests

Gas Rates

Choke (inches)	Pressure (psig)	Gas Rate (Mcf/d)



TRILOBITE TESTING, INC.

DRILL STEM TEST REPORT

Berexco, LLC
 2020 N. Bramblewood
 Wichita, KS 67206
 ATTN: Bryan Bynog

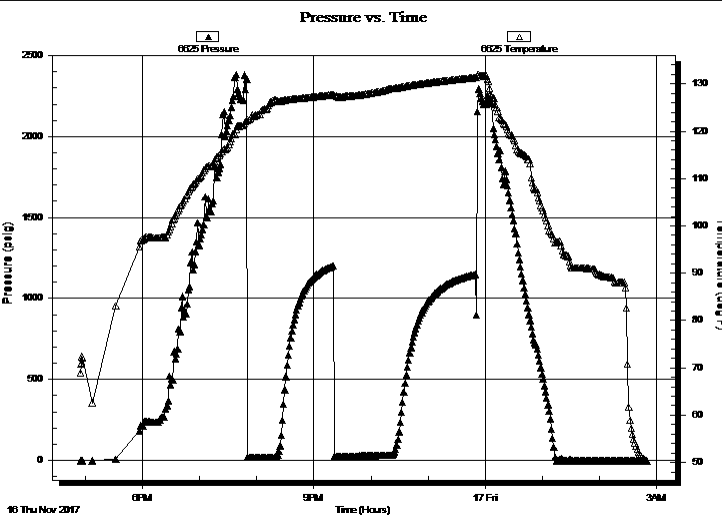
8/3s/35w Rawlins KS
Pochop #1-8
 Job Ticket: 63428 **DST#: 4**
 Test Start: 2017.11.16 @ 16:55:00

GENERAL INFORMATION:

Formation: Ft. Scott			
Deviated: No Whipstock:	ft (KB)	Test Type: Conventional Bottom Hole (Reset)	
Time Tool Opened: 19:49:45		Tester: James Winder	
Time Test Ended: 02:49:45		Unit No: 83	
Interval: 4520.00 ft (KB) To 4571.00 ft (KB) (TVD)		Reference Elevations: 3250.00 ft (KB)	
Total Depth: 4571.00 ft (KB) (TVD)		3242.00 ft (CF)	
Hole Diameter: 7.88 inches	Hole Condition: Fair	KB to GR/CF: 8.00 ft	

Serial #: 6625	Inside				
Press@RunDepth:	psig @	4521.00 ft (KB)	Capacity:	8000.00 psig	
Start Date:	2017.11.16	End Date:	2017.11.17	Last Calib.:	2017.11.17
Start Time:	16:55:05	End Time:	02:50:15	Time On Btm:	
				Time Off Btm:	

TEST COMMENT: 30 - IF: 1/4" Blow at open, built to 1"
 60 - IS: No blow back
 60 - FF: No blow
 90 - FS: No blow



PRESSURE SUMMARY

Time (Min.)	Pressure (psig)	Temp (deg F)	Annotation

Recovery

Length (ft)	Description	Volume (bbl)
45.00	Mud 100%	0.22

* Recovery from multiple tests

Gas Rates

Choke (inches)	Pressure (psig)	Gas Rate (Mcf/d)



**TRILOBITE
TESTING, INC.**

DRILL STEM TEST REPORT

FLUID SUMMARY

Berexco, LLC

8/3s/35w Rawlins KS

2020 N. Bramblewood
Wichita, KS 67206

Pochop #1-8

Job Ticket: 63428

DST#: 4

ATTN: Bryan Bynog

Test Start: 2017.11.16 @ 16:55:00

Mud and Cushion Information

Mud Type: Gel Chem

Cushion Type:

Oil API:

deg API

Mud Weight: 9.00 lb/gal

Cushion Length:

ft

Water Salinity:

ppm

Viscosity: 63.00 sec/qt

Cushion Volume:

bbbl

Water Loss: 7.98 in³

Gas Cushion Type:

Resistivity: ohm.m

Gas Cushion Pressure:

psig

Salinity: 2900.00 ppm

Filter Cake: 2.00 inches

Recovery Information

Recovery Table

Length ft	Description	Volume bbl
45.00	Mud 100%	0.221

Total Length: 45.00 ft Total Volume: 0.221 bbl

Num Fluid Samples: 0

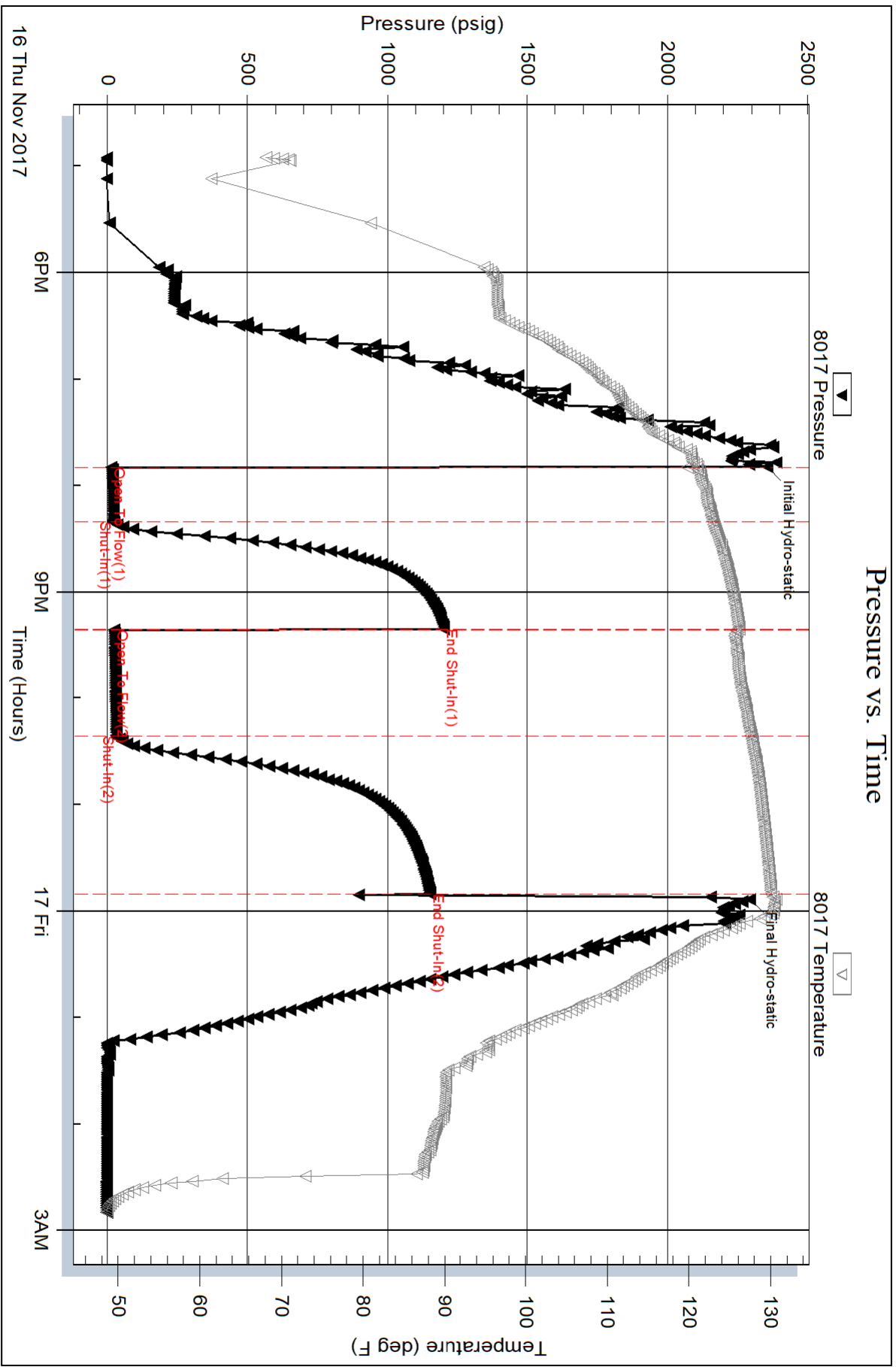
Num Gas Bombs: 0

Serial #:

Laboratory Name:

Laboratory Location:

Recovery Comments:



Serial #: 6625

Inside

Berexco, LLC

Pochop #1-8

DST Test Number: 4

