

**TRILOBITE
TESTING, INC.**

DRILL STEM TEST REPORT

Lonestar Oil Co
 PO Box 205
 Gorham Ks 67640-0205
 ATTN: Jeff Crawford, Ed Gla

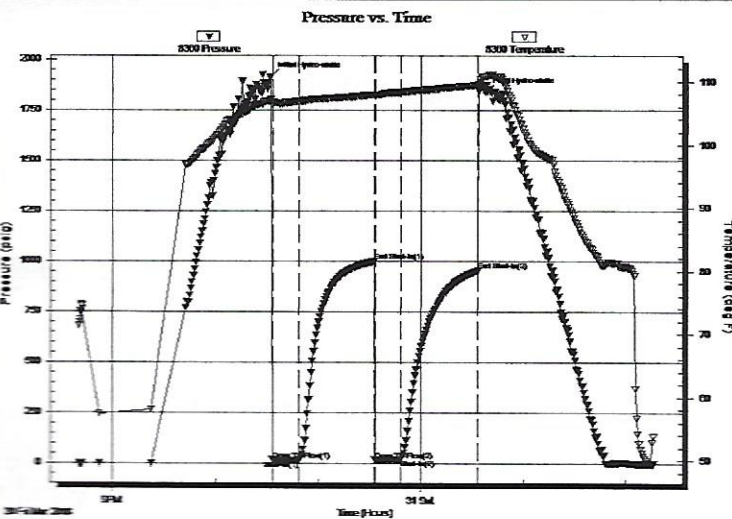
11-14s-20w Ellis
Josephine #2
 Job Ticket: 63853 **DST#: 1**
 Test Start: 2018.03.30 @ 20:40:14

GENERAL INFORMATION:

Formation: **Congl. Sd**
 Deviated: **No** Whipstock: ft (KB)
 Test Type: **Conventional Bottom Hole (Initial)**
 Time Tool Opened: 22:33:09 Tester: **Ray Schwager**
 Time Test Ended: 02:16:23 Unit No: **77**
 Interval: **3797.00 ft (KB) To 3823.00 ft (KB) (TVD)** Reference Elevations: **2255.00 ft (KB)**
 Total Depth: **3823.00 ft (KB) (TVD)** **2250.00 ft (CF)**
 Hole Diameter: **7.85 inches** Hole Condition: **Fair** KB to GR/CF: **5.00 ft**

Serial #: 8360 **Inside**
 Press@RunDepth: **23.59 psig @ 3798.00 ft (KB)** Capacity: **8000.00 psig**
 Start Date: **2018.03.30** End Date: **2018.03.31** Last Calib.: **2018.03.31**
 Start Time: **20:40:14** End Time: **02:16:23** Time On Btm: **2018.03.30 @ 22:32:24**
 Time Off Btm: **2018.03.31 @ 00:38:09**

TEST COMMENT: 15-IFP-Weak blow thru-out 1/2"to 1/4"blow
 45-ISIP-no blow
 15-FFP-no blow
 45-ISIP-no blow



PRESSURE SUMMARY

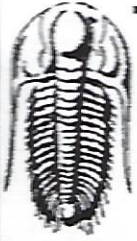
Time (Min.)	Pressure (psig)	Temp (deg F)	Annotation
0	1915.70	107.19	Initial Hydro-static
1	18.90	106.34	Open To Flow (1)
17	17.70	106.95	Shut-In(1)
61	1000.08	107.95	End Shut-In(1)
61	18.87	107.79	Open To Flow (2)
76	23.59	108.35	Shut-In(2)
121	953.68	109.46	End Shut-In(2)
126	1839.41	110.84	Final Hydro-static

Recovery

Length (ft)	Description	Volume (bbl)
10.00	Mud w/slight show of oil	0.14

Gas Rates

	Choke (inches)	Pressure (psig)	Gas Rate (Mcf/d)



**TRILOBITE
TESTING, INC.**

DRILL STEM TEST REPORT

Lonestar Oil Co

11-14s-20w Ellis

PO Box 205
Gorham Ks 67640-0205

Josephine #2

Job Ticket: 63853

DST#: 1

ATTN: Jeff Crawford, Ed Gla

Test Start: 2018.03.30 @ 20:40:14

GENERAL INFORMATION:

Formation: **Congl. Sd**

Deviated: No Whipstock: ft (KB)

Time Tool Opened: 22:33:09

Time Test Ended: 02:16:23

Test Type: Conventional Bottom Hole (Initial)

Tester: Ray Schwager

Unit No: 77

Interval: **3797.00 ft (KB) To 3823.00 ft (KB) (TVD)**

Reference Elevations: 2255.00 ft (KB)

Total Depth: 3823.00 ft (KB) (TVD)

2250.00 ft (CF)

Hole Diameter: 7.85 inches Hole Condition: Fair

KB to GR/CF: 5.00 ft

Serial #: **8673** Outside

Press@RunDepth: psig @ 3798.00 ft (KB)

Capacity: 8000.00 psig

Start Date: 2018.03.30 End Date: 2018.03.31

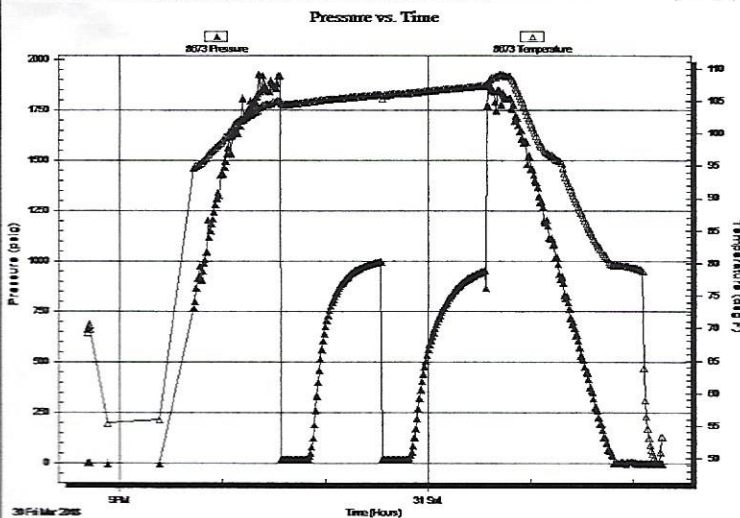
Last Calib.: 2018.03.31

Start Time: 20:40:57 End Time: 02:16:51

Time On Btm:

Time Off Btm:

TEST COMMENT: 15-IFP-Weak blow thru-out 1/2"to 1/4"blow
45-ISIP-no blow
15-FFP-no blow
45-ISIP-no blow



PRESSURE SUMMARY

Time (Min.)	Pressure (psig)	Temp (deg F)	Annotation

Recovery

Length (ft)	Description	Volume (bbl)
10.00	Mud w/slight show of oil	0.14

Gas Rates

	Choke (inches)	Pressure (psig)	Gas Rate (Mcf/d)



**TRILOBITE
TESTING, INC.**

DRILL STEM TEST REPORT

FLUID SUMMARY

Lonestar Oil Co

11-14s-20w Ellis

PO Box 205
Gorham Ks 67640-0205

Josephine #2

Job Ticket: 63853

DST#: 1

ATTN: Jeff Crawford, Ed Gla

Test Start: 2018.03.30 @ 20:40:14

Mud and Cushion Information

Mud Type: Gel Chem

Cushion Type:

Oil API:

deg API

Mud Weight: 9.00 lb/gal

Cushion Length:

ft

Water Salinity:

ppm

Viscosity: 53.00 sec/qt

Cushion Volume:

bbl

Water Loss: 6.40 in³

Gas Cushion Type:

Resistivity: ohm.m

Gas Cushion Pressure:

psig

Salinity: 4800.00 ppm

Filter Cake: 1.00 inches

Recovery Information

Recovery Table

Length ft	Description	Volume bbl
10.00	Mud w /slight show of oil	0.140

Total Length: 10.00 ft Total Volume: 0.140 bbl

Num Fluid Samples: 0

Num Gas Bombs: 0

Serial #:

Laboratory Name:

Laboratory Location:

Recovery Comments:

