



TRILOBITE TESTING, INC.

DRILL STEM TEST REPORT

Berexco, LLC

17/2s/37w Cheyenne KS

2020 N Bramblewood
Wichita, KS 67206

Theron #1-17

Job Ticket: 63351

DST#: 2

ATTN: Bryan Bynog

Test Start: 2018.02.06 @ 00:15:00

GENERAL INFORMATION:

Formation: **Lans. "B"**

Deviated: No Whipstock: ft (KB)

Time Tool Opened: 04:32:15

Time Test Ended: 13:57:15

Test Type: Conventional Bottom Hole (Reset)

Tester: James Winder

Unit No: 83

Interval: 4355.00 ft (KB) To 4430.00 ft (KB) (TVD)

Reference Elevations: 3413.00 ft (KB)

Total Depth: 4430.00 ft (KB) (TVD)

3405.00 ft (CF)

Hole Diameter: 7.88 inches Hole Condition: Fair

KB to GR/CF: 8.00 ft

Serial #: 8017 Outside

Press@RunDepth: 435.17 psig @ 4356.00 ft (KB)

Capacity: 8000.00 psig

Start Date: 2018.02.06 End Date: 2018.02.06

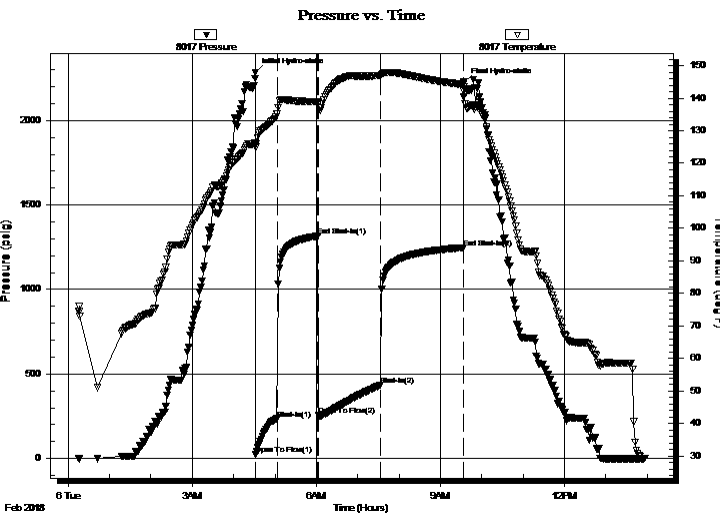
Last Calib.: 2018.02.06

Start Time: 00:15:05 End Time: 13:57:15

Time On Btm: 2018.02.06 @ 04:31:45

Time Off Btm: 2018.02.06 @ 09:34:15

TEST COMMENT: 30 - IF: Blow built to BOB (11") at 9 min. (Diesel in bucket)
60 - IS: Blow back built to 2 1/2"
90 - FF: Blow built to BOB at 12 min.
120 - FS: Blow back built to 3 1/2"



PRESSURE SUMMARY

Time (Min.)	Pressure (psig)	Temp (deg F)	Annotation
0	2284.21	126.20	Initial Hydro-static
1	25.66	124.94	Open To Flow (1)
32	234.95	135.29	Shut-In(1)
91	1316.44	138.91	End Shut-In(1)
91	253.07	138.50	Open To Flow (2)
182	435.17	146.94	Shut-In(2)
302	1247.58	144.17	End Shut-In(2)
303	2226.40	142.28	Final Hydro-static

Recovery

Length (ft)	Description	Volume (bbl)
60.00	SMW/GO 46%o, 45%g, 5%w, 4%m	0.30
525.00	MCGO 65%o, 20%g, 15%m	3.43
315.00	SMCGO 72%o, 22%g, 6%m	4.42
280.00	CGO 85%o, 15%g	3.93
0.00	GIP = 220'	0.00

Gas Rates

Choke (inches)	Pressure (psig)	Gas Rate (Mcf/d)

* Recovery from multiple tests



**TRILOBITE
TESTING, INC.**

DRILL STEM TEST REPORT

FLUID SUMMARY

Berexco, LLC

17/2s/37w Cheyenne KS

2020 N Bramblewood
Wichita, KS 67206

Theron #1-17

Job Ticket: 63351

DST#: 2

ATTN: Bryan Bynog

Test Start: 2018.02.06 @ 00:15:00

Mud and Cushion Information

Mud Type: Gel Chem

Cushion Type:

Oil API:

32.2 deg API

Mud Weight: 9.00 lb/gal

Cushion Length:

ft

Water Salinity:

ppm

Viscosity: 55.00 sec/qt

Cushion Volume:

bbbl

Water Loss: 6.39 in³

Gas Cushion Type:

Resistivity: ohm.m

Gas Cushion Pressure:

psig

Salinity: 800.00 ppm

Filter Cake: 2.00 inches

Recovery Information

Recovery Table

Length ft	Description	Volume bbl
60.00	SMW/GO 46%o, 45%g, 5%w, 4%m	0.295
525.00	MCGO 65%o, 20%g, 15%m	3.429
315.00	SMCGO 72%o, 22%g, 6%m	4.419
280.00	CGO 85%o, 15%g	3.928
0.00	GIP = 220'	0.000

Total Length: 1180.00 ft Total Volume: 12.071 bbl

Num Fluid Samples: 0

Num Gas Bombs: 0

Serial #:

Laboratory Name:

Laboratory Location:

Recovery Comments: Gravity = 29 api @ 28 deg F

Corrected Gravity = 32.2 api

