



DRILL STEM TEST REPORT

Prepared For: **RL Investments LLC**

2698 J O Terrace
Hill City, KS 67642

ATTN: Richard Bell

Pratt A #2-35

35-8S.-29W Sheridan,KS

Start Date: 2018.03.26 @ 12:00:00

End Date: 2018.03.26 @ 18:20:50

Job Ticket #: 63168 DST #: 1

Trilobite Testing, Inc
1515 Commerce Parkway Hays, KS 67601
ph: 785-625-4778 fax: 785-625-5620

Printed: 2018.04.02 @ 15:10:00



TRILOBITE TESTING, INC.

DRILL STEM TEST REPORT

RL Investments LLC
 2698 J O Terrace
 Hill City, KS 67642
 ATTN: Richard Bell

35-8S.-29W Sheridan,KS

Pratt A #2-35

Job Ticket: 63168

DST#: 1

Test Start: 2018.03.26 @ 12:00:00

GENERAL INFORMATION:

Formation: **Topeka**

Deviated: No Whipstock: ft (KB)

Time Tool Opened: 14:03:50

Time Test Ended: 18:20:50

Test Type: Conventional Bottom Hole (Initial)

Tester: Martine Salinas

Unit No: 82

Interval: **3671.00 ft (KB) To 3700.00 ft (KB) (TVD)**

Reference Elevations: 2828.00 ft (KB)

Total Depth: 3700.00 ft (KB) (TVD)

2822.00 ft (CF)

Hole Diameter: 7.88 inches Hole Condition: Good

KB to GR/CF: 6.00 ft

Serial #: 8959 Inside

Press@RunDepth: 19.10 psig @ 3672.00 ft (KB)

Capacity: 8000.00 psig

Start Date: 2018.03.26

End Date:

2018.03.26

Last Calib.: 2018.03.26

Start Time: 12:00:01

End Time:

18:20:50

Time On Btm: 2018.03.26 @ 14:03:40

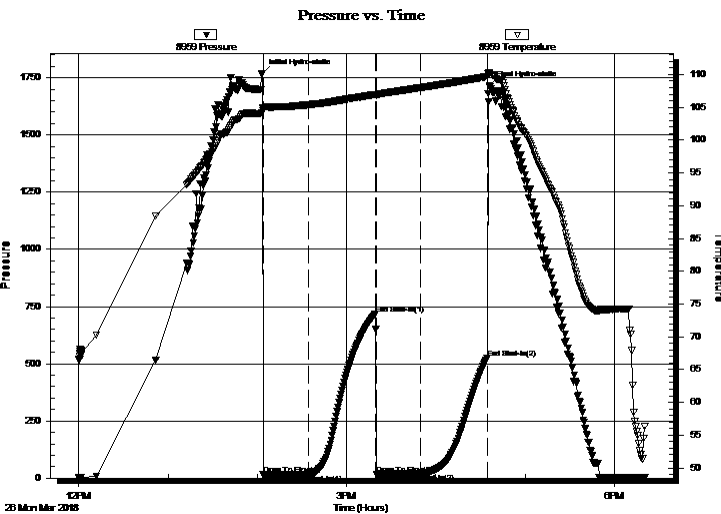
Time Off Btm: 2018.03.26 @ 16:36:09

TEST COMMENT: 30-IF-Surface blow built to 3/4"

45-ISI-No blow

30-FF-No blow

45-FSI-No blow



PRESSURE SUMMARY

Time (Min.)	Pressure (psig)	Temp (deg F)	Annotation
0	1769.67	104.90	Initial Hydro-static
1	15.09	104.48	Open To Flow (1)
31	16.60	105.39	Shut-In(1)
76	718.35	106.95	End Shut-In(1)
77	17.82	106.86	Open To Flow (2)
106	19.10	107.98	Shut-In(2)
151	524.29	109.65	End Shut-In(2)
153	1715.50	110.07	Final Hydro-static

Recovery

Length (ft)	Description	Volume (bbl)
5.00	SOCM 7%O, 93% M	0.02

Gas Rates

	Choke (inches)	Pressure (psig)	Gas Rate (Mcf/d)



**TRILOBITE
TESTING, INC.**

DRILL STEM TEST REPORT

TOOL DIAGRAM

RL Investments LLC

35-8S.-29W Sheridan,KS

2698 J O Terrace
Hill City, KS 67642

Pratt A #2-35

Job Ticket: 63168

DST#: 1

ATTN: Richard Bell

Test Start: 2018.03.26 @ 12:00:00

Tool Information

Drill Pipe:	Length: 3537.00 ft	Diameter: 3.80 inches	Volume: 49.61 bbl	Tool Weight: 2000.00 lb
Heavy Wt. Pipe:	Length: 0.00 ft	Diameter: 2.75 inches	Volume: 0.00 bbl	Weight set on Packer: 20000.00 lb
Drill Collar:	Length: 121.00 ft	Diameter: 2.25 inches	Volume: 0.60 bbl	Weight to Pull Loose: 60000.00 lb
			<u>Total Volume: 50.21 bbl</u>	Tool Chased 0.00 ft
Drill Pipe Above KB:	7.00 ft			String Weight: Initial 55000.00 lb
Depth to Top Packer:	3671.00 ft			Final 55000.00 lb
Depth to Bottom Packer:	ft			
Interval between Packers:	29.00 ft			
Tool Length:	49.00 ft			
Number of Packers:	2	Diameter: 6.75 inches		

Tool Comments:

Tool Description

Tool Description	Length (ft)	Serial No.	Position	Depth (ft)	Accum. Lengths
Shut In Tool	5.00			3656.00	
Hydraulic tool	5.00			3661.00	
Packer	5.00			3666.00	20.00 Bottom Of Top Packer
Packer	5.00			3671.00	
Stubb	1.00			3672.00	
Recorder	0.00	8959	Inside	3672.00	
Recorder	0.00	8734	Outside	3672.00	
Perforations	23.00			3695.00	
Bullnose	5.00			3700.00	29.00 Bottom Packers & Anchor
Total Tool Length:	49.00				



**TRILOBITE
TESTING, INC.**

DRILL STEM TEST REPORT

FLUID SUMMARY

RL Investments LLC

35-8S.-29W Sheridan,KS

2698 J O Terrace
Hill City, KS 67642

Pratt A #2-35

Job Ticket: 63168

DST#: 1

ATTN: Richard Bell

Test Start: 2018.03.26 @ 12:00:00

Mud and Cushion Information

Mud Type: Gel Chem

Cushion Type:

Oil API:

deg API

Mud Weight: 9.00 lb/gal

Cushion Length:

ft

Water Salinity:

ppm

Viscosity: 63.00 sec/qt

Cushion Volume:

bbbl

Water Loss: 7.13 in³

Gas Cushion Type:

Resistivity: ohm.m

Gas Cushion Pressure:

psig

Salinity: 900.00 ppm

Filter Cake: 2.00 inches

Recovery Information

Recovery Table

Length ft	Description	Volume bbl
5.00	SOCM 7%O, 93% M	0.025

Total Length: 5.00 ft Total Volume: 0.025 bbl

Num Fluid Samples: 0

Num Gas Bombs: 0

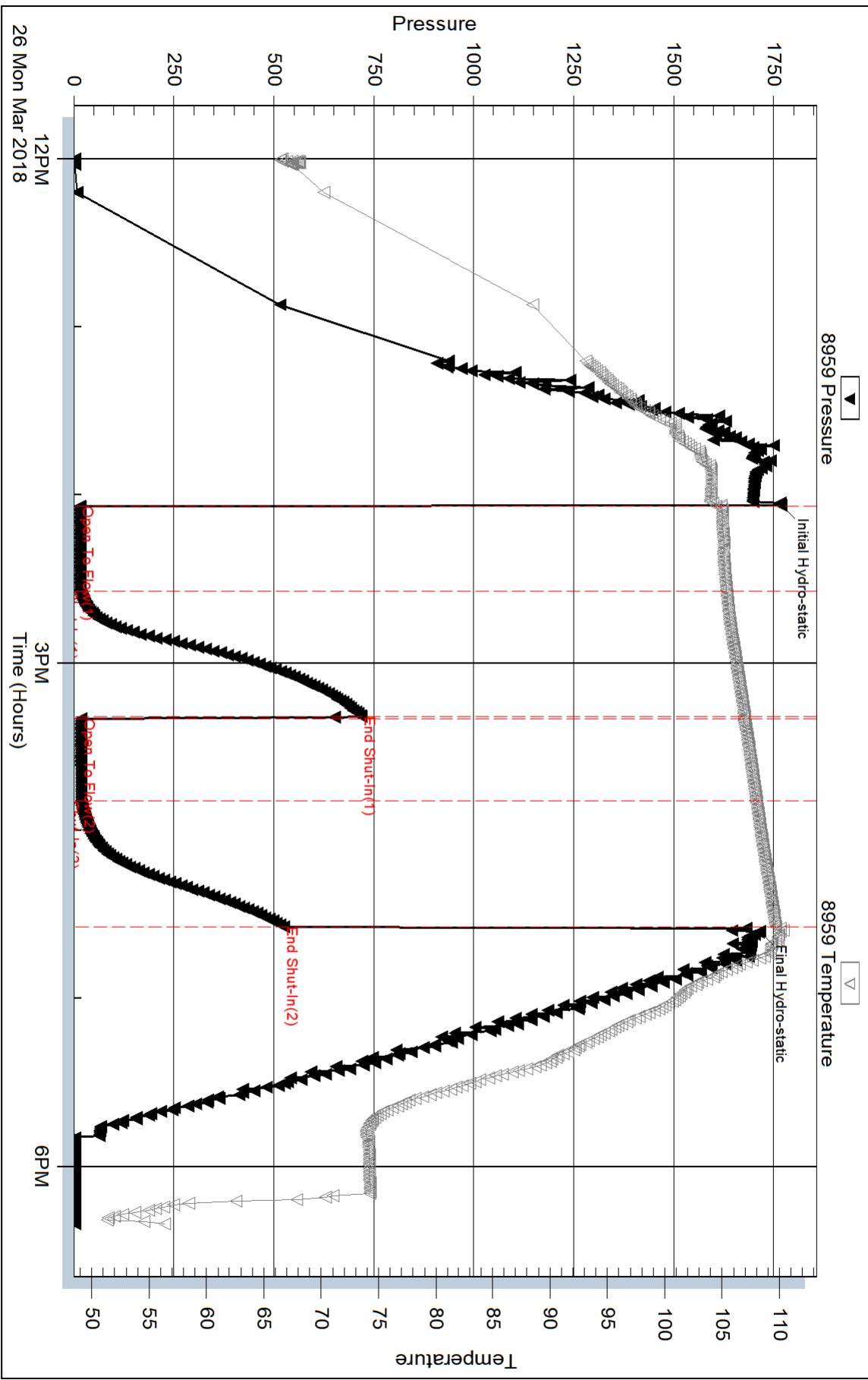
Serial #:

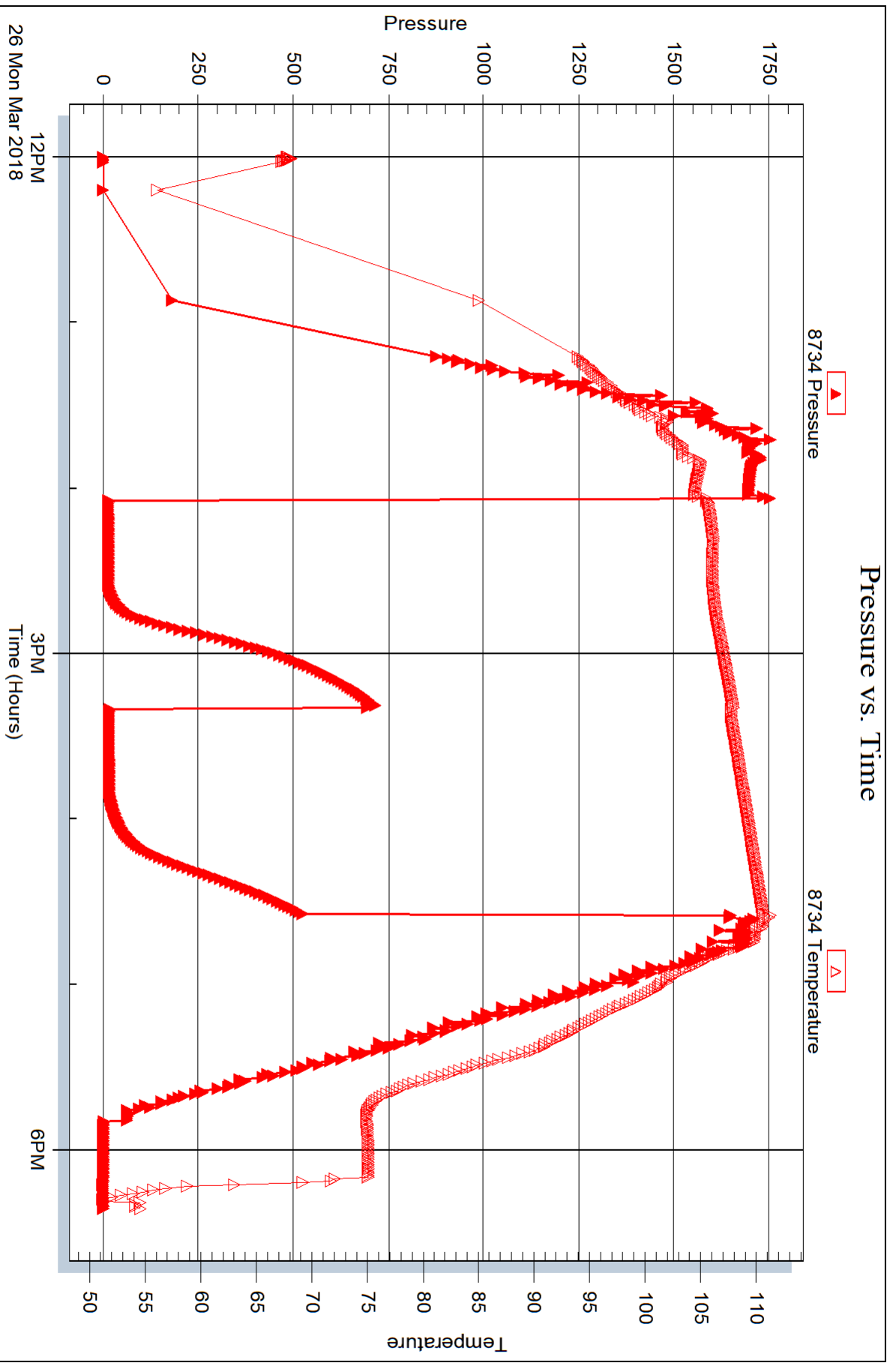
Laboratory Name:

Laboratory Location:

Recovery Comments: Not enough oil to catch gravity

Pressure vs. Time







DRILL STEM TEST REPORT

Prepared For: **RL Investments LLC**

2698 J O Terrace
Hill City, KS 67642

ATTN: Richard Bell

Pratt A #2-35

35-8S.-29W Sheridan,KS

Start Date: 2018.03.27 @ 04:14:00

End Date: 2018.03.27 @ 10:43:50

Job Ticket #: 63169 DST #: 2

Trilobite Testing, Inc
1515 Commerce Parkway Hays, KS 67601
ph: 785-625-4778 fax: 785-625-5620

Printed: 2018.04.02 @ 15:09:37



TRILOBITE TESTING, INC.

DRILL STEM TEST REPORT

RL Investments LLC
 2698 J O Terrace
 Hill City, KS 67642
 ATTN: Richard Bell

35-8S.-29W Sheridan,KS

Pratt A #2-35

Job Ticket: 63169

DST#: 2

Test Start: 2018.03.27 @ 04:14:00

GENERAL INFORMATION:

Formation: **Tecumseh Sand**
 Deviated: No Whipstock: ft (KB)
 Time Tool Opened: 05:53:30
 Time Test Ended: 10:43:50
 Interval: **3770.00 ft (KB) To 3786.00 ft (KB) (TVD)**
 Total Depth: 3786.00 ft (KB) (TVD)
 Hole Diameter: 7.88 inches Hole Condition: Good
 Test Type: Conventional Bottom Hole (Reset)
 Tester: Martine Salinas
 Unit No: 82
 Reference Elevations: 2828.00 ft (KB)
 2822.00 ft (CF)
 KB to GR/CF: 6.00 ft

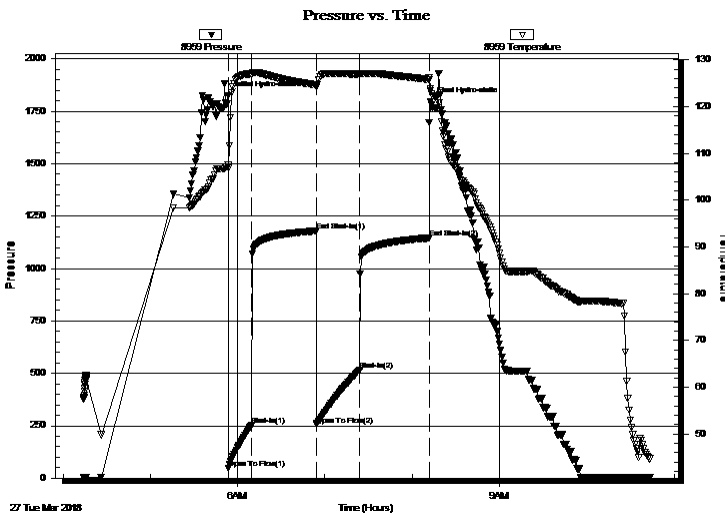
Serial #: 8959

Inside

Press@RunDepth: 515.14 psig @ 3771.00 ft (KB) Capacity: 8000.00 psig
 Start Date: 2018.03.27 End Date: 2018.03.27 Last Calib.: 2018.03.27
 Start Time: 04:14:01 End Time: 10:43:50 Time On Btm: 2018.03.27 @ 05:53:20
 Time Off Btm: 2018.03.27 @ 08:12:40

TEST COMMENT: 15-IF- BOB (12 inches) @ 3 1/2 mins
 45-ISI-Surface blow back @ 17 mins blew throughout
 30-FF-BOB (12 inches) @ 4 1/2 mins
 45-FSI-No blow

PRESSURE SUMMARY



Time (Min.)	Pressure (psig)	Temp (deg F)	Annotation
0	1823.27	107.50	Initial Hydro-static
1	48.17	106.82	Open To Flow (1)
16	250.87	126.97	Shut-In(1)
61	1178.45	124.64	End Shut-In(1)
61	254.18	124.42	Open To Flow (2)
91	515.14	126.90	Shut-In(2)
139	1144.55	125.81	End Shut-In(2)
140	1794.31	123.40	Final Hydro-static

Recovery

Length (ft)	Description	Volume (bbl)
943.00	SMS/OCW 2%M, 4%O, 94%W	12.40
156.00	MC/HOCW 20%M, 35%O, 45%W	2.19

* Recovery from multiple tests

Gas Rates

Choke (inches)	Pressure (psig)	Gas Rate (Mcf/d)



**TRILOBITE
TESTING, INC.**

DRILL STEM TEST REPORT

TOOL DIAGRAM

RL Investments LLC

35-8S.-29W Sheridan,KS

2698 J O Terrace
Hill City, KS 67642

Pratt A #2-35

Job Ticket: 63169

DST#: 2

ATTN: Richard Bell

Test Start: 2018.03.27 @ 04:14:00

Tool Information

Drill Pipe:	Length: 3664.00 ft	Diameter: 3.80 inches	Volume: 51.40 bbl	Tool Weight: 2000.00 lb
Heavy Wt. Pipe:	Length: 0.00 ft	Diameter: 2.75 inches	Volume: 0.00 bbl	Weight set on Packer: 20000.00 lb
Drill Collar:	Length: 91.00 ft	Diameter: 2.25 inches	Volume: 0.45 bbl	Weight to Pull Loose: 60000.00 lb
			<u>Total Volume: 51.85 bbl</u>	Tool Chased 0.00 ft
Drill Pipe Above KB:	5.00 ft			String Weight: Initial 55000.00 lb
Depth to Top Packer:	3770.00 ft			Final 58000.00 lb
Depth to Bottom Packer:	ft			
Interval between Packers:	16.00 ft			
Tool Length:	36.00 ft			
Number of Packers:	2	Diameter: 6.75 inches		

Tool Comments:

Tool Description	Length (ft)	Serial No.	Position	Depth (ft)	Accum. Lengths
------------------	-------------	------------	----------	------------	----------------

Shut In Tool	5.00			3755.00	
Hydraulic tool	5.00			3760.00	
Packer	5.00			3765.00	20.00 Bottom Of Top Packer
Packer	5.00			3770.00	
Stubb	1.00			3771.00	
Recorder	0.00	8959	Inside	3771.00	
Recorder	0.00	8734	Outside	3771.00	
Perforations	10.00			3781.00	
Bullnose	5.00			3786.00	16.00 Bottom Packers & Anchor
Total Tool Length:	36.00				



**TRILOBITE
TESTING, INC.**

DRILL STEM TEST REPORT

FLUID SUMMARY

RL Investments LLC

35-8S.-29W Sheridan,KS

2698 J O Terrace
Hill City, KS 67642

Pratt A #2-35

Job Ticket: 63169

DST#: 2

ATTN: Richard Bell

Test Start: 2018.03.27 @ 04:14:00

Mud and Cushion Information

Mud Type: Gel Chem

Cushion Type:

Oil API:

deg API

Mud Weight: 9.00 lb/gal

Cushion Length:

ft

Water Salinity:

ppm

Viscosity: 60.00 sec/qt

Cushion Volume:

bbbl

Water Loss: 7.14 in³

Gas Cushion Type:

Resistivity: ohm.m

Gas Cushion Pressure:

psig

Salinity: 900.00 ppm

Filter Cake: 2.00 inches

Recovery Information

Recovery Table

Length ft	Description	Volume bbl
943.00	SMS/OCW 2%M, 4%O, 94%W	12.399
156.00	MC/HOCW 20%M, 35%O, 45%W	2.188

Total Length: 1099.00 ft Total Volume: 14.587 bbl

Num Fluid Samples: 0

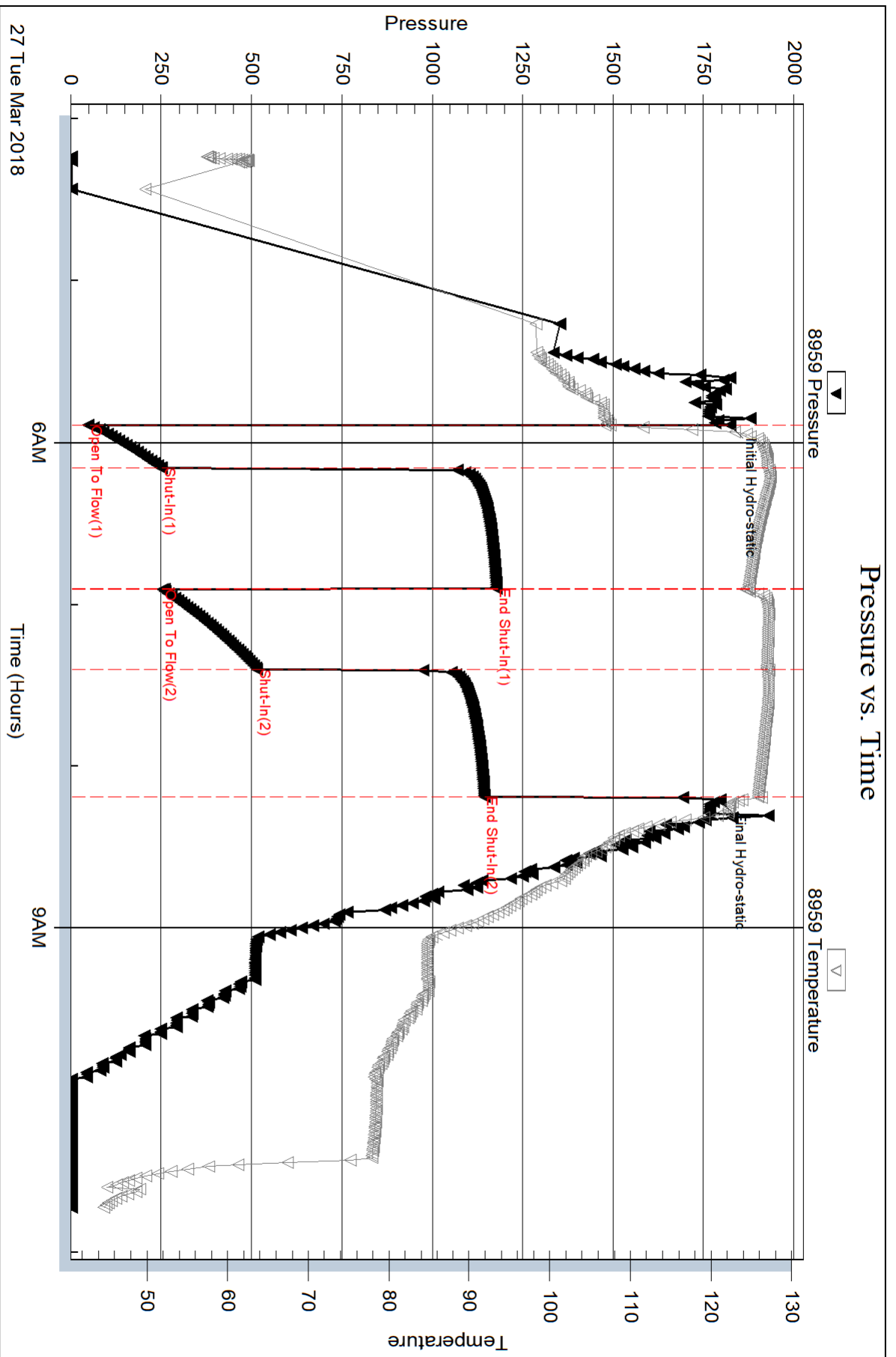
Num Gas Bombs: 0

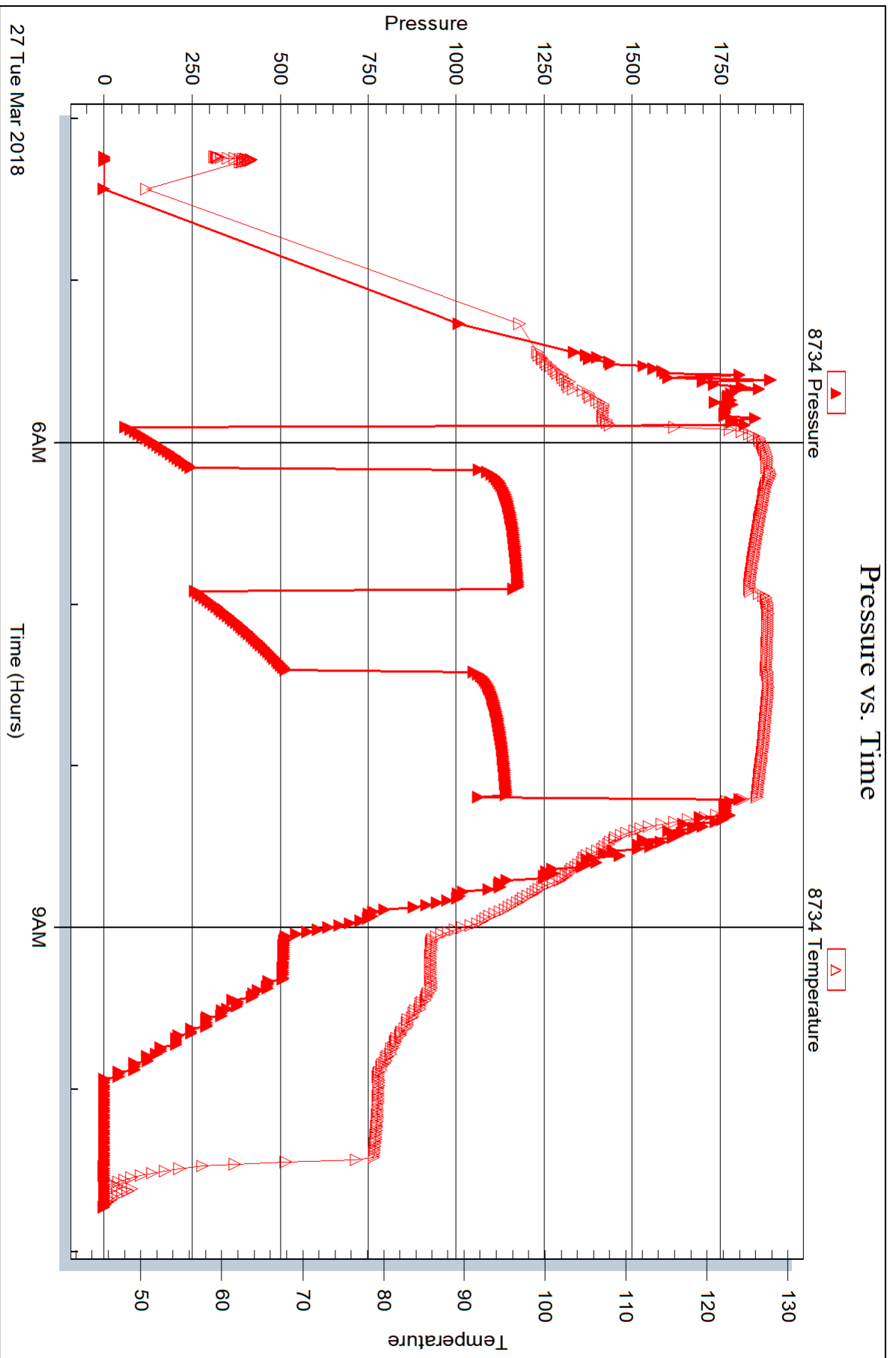
Serial #:

Laboratory Name:

Laboratory Location:

Recovery Comments: RW = .145 @ 47 degs = 86,000 ppm







DRILL STEM TEST REPORT

Prepared For: **RL Investments LLC**

2698 J O Terrace
Hill City, KS 67642

ATTN: Richard Bell

Pratt A #2-35

35-8S.-29W Sheridan,KS

Start Date: 2018.03.27 @ 17:22:00

End Date: 2018.03.28 @ 00:53:00

Job Ticket #: 63170 DST #: 3

Trilobite Testing, Inc
1515 Commerce Parkway Hays, KS 67601
ph: 785-625-4778 fax: 785-625-5620

Printed: 2018.04.02 @ 15:09:15



TRILOBITE TESTING, INC.

DRILL STEM TEST REPORT

RL Investments LLC
 2698 J O Terrace
 Hill City, KS 67642
 ATTN: Richard Bell

35-8S.-29W Sheridan,KS

Pratt A #2-35

Job Ticket: 63170

DST#: 3

Test Start: 2018.03.27 @ 17:22:00

GENERAL INFORMATION:

Formation: **Le Compton**

Deviated: No Whipstock: ft (KB)

Time Tool Opened: 19:53:50

Time Test Ended: 00:53:00

Test Type: Conventional Bottom Hole (Reset)

Tester: Martine Salinas

Unit No: 82

Interval: 3805.00 ft (KB) To 3836.00 ft (KB) (TVD)

Reference Elevations: 2828.00 ft (KB)

Total Depth: 3836.00 ft (KB) (TVD)

2822.00 ft (CF)

Hole Diameter: 7.88 inches Hole Condition: Good

KB to GR/CF: 6.00 ft

Serial #: 8959

Inside

Press@RunDepth: 435.11 psig @ 3806.00 ft (KB)

Capacity: 8000.00 psig

Start Date: 2018.03.27

End Date:

2018.03.28

Last Calib.:

2018.03.28

Start Time: 17:22:01

End Time:

00:53:00

Time On Btm:

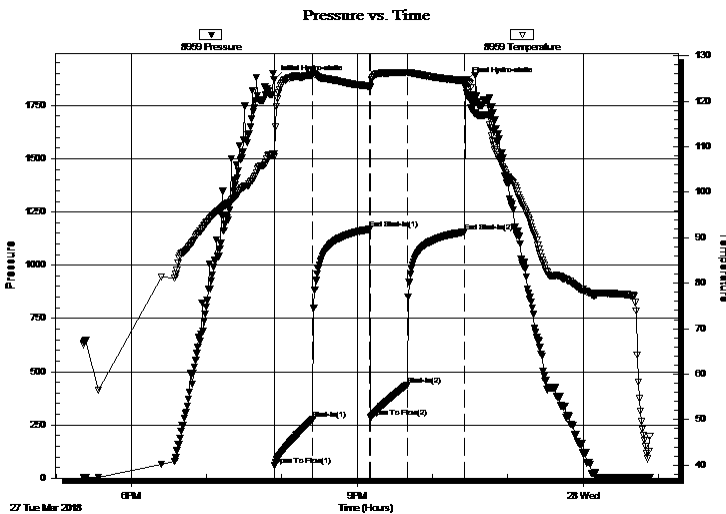
2018.03.27 @ 19:53:40

Time Off Btm:

2018.03.27 @ 22:26:30

TEST COMMENT: 30-IF- BOB (12 inches) @ 4 1/2 mins
 45-ISI-No blow
 30-FF- BOB (12 inches) @ 8 1/2 mins
 45-FSI-Surface blow back @ 33 mins

PRESSURE SUMMARY



Time (Min.)	Pressure (psig)	Temp (deg F)	Annotation
0	1872.83	108.40	Initial Hydro-static
1	58.52	107.85	Open To Flow (1)
31	275.88	125.82	Shut-In(1)
77	1168.68	123.31	End Shut-In(1)
77	286.78	123.01	Open To Flow (2)
106	435.11	126.29	Shut-In(2)
152	1156.36	124.51	End Shut-In(2)
153	1860.47	124.74	Final Hydro-static

Recovery

Length (ft)	Description	Volume (bbl)
373.00	SOS/MSW 1%O, 2%M, 97%W	4.13
562.00	GOSMCW 3%G, 7%O, 16%M, 74%W	7.88
5.00	CGO 2%G, 98%O	0.07

* Recovery from multiple tests

Gas Rates

	Choke (inches)	Pressure (psig)	Gas Rate (Mcf/d)



**TRILOBITE
TESTING, INC.**

DRILL STEM TEST REPORT

TOOL DIAGRAM

RL Investments LLC

35-8S.-29W Sheridan,KS

2698 J O Terrace
Hill City, KS 67642

Pratt A #2-35

Job Ticket: 63170

DST#: 3

ATTN: Richard Bell

Test Start: 2018.03.27 @ 17:22:00

Tool Information

Drill Pipe:	Length: 3697.00 ft	Diameter: 3.80 inches	Volume: 51.86 bbl	Tool Weight:	2000.00 lb
Heavy Wt. Pipe:	Length: 0.00 ft	Diameter: 2.75 inches	Volume: 0.00 bbl	Weight set on Packer:	20000.00 lb
Drill Collar:	Length: 121.00 ft	Diameter: 2.25 inches	Volume: 0.60 bbl	Weight to Pull Loose:	60000.00 lb
			<u>Total Volume: 52.46 bbl</u>	Tool Chased	0.00 ft
Drill Pipe Above KB:	33.00 ft			String Weight: Initial	58000.00 lb
Depth to Top Packer:	3805.00 ft			Final	58000.00 lb
Depth to Bottom Packer:	ft				
Interval between Packers:	31.00 ft				
Tool Length:	51.00 ft				
Number of Packers:	2	Diameter: 6.75 inches			

Tool Comments:

Tool Description	Length (ft)	Serial No.	Position	Depth (ft)	Accum. Lengths
------------------	-------------	------------	----------	------------	----------------

Shut In Tool	5.00			3790.00	
Hydraulic tool	5.00			3795.00	
Packer	5.00			3800.00	20.00 Bottom Of Top Packer
Packer	5.00			3805.00	
Stubb	1.00			3806.00	
Recorder	0.00	8959	Inside	3806.00	
Recorder	0.00	8734	Outside	3806.00	
Perforations	25.00			3831.00	
Bullnose	5.00			3836.00	31.00 Bottom Packers & Anchor
Total Tool Length:	51.00				



**TRILOBITE
TESTING, INC.**

DRILL STEM TEST REPORT

FLUID SUMMARY

RL Investments LLC

35-8S.-29W Sheridan,KS

2698 J O Terrace
Hill City, KS 67642

Pratt A #2-35

Job Ticket: 63170

DST#: 3

ATTN: Richard Bell

Test Start: 2018.03.27 @ 17:22:00

Mud and Cushion Information

Mud Type: Gel Chem

Cushion Type:

Oil API:

deg API

Mud Weight: 9.00 lb/gal

Cushion Length:

ft

Water Salinity:

ppm

Viscosity: 70.00 sec/qt

Cushion Volume:

bbbl

Water Loss: 7.95 in³

Gas Cushion Type:

Resistivity: ohm.m

Gas Cushion Pressure:

psig

Salinity: 8400.00 ppm

Filter Cake: 2.00 inches

Recovery Information

Recovery Table

Length ft	Description	Volume bbbl
373.00	SOS/MSW 1%O, 2%M, 97%W	4.130
562.00	GOSMCW 3%G,7%O, 16%M, 74%W	7.883
5.00	CGO 2%G, 98%O	0.070

Total Length: 940.00 ft Total Volume: 12.083 bbl

Num Fluid Samples: 0

Num Gas Bombs: 0

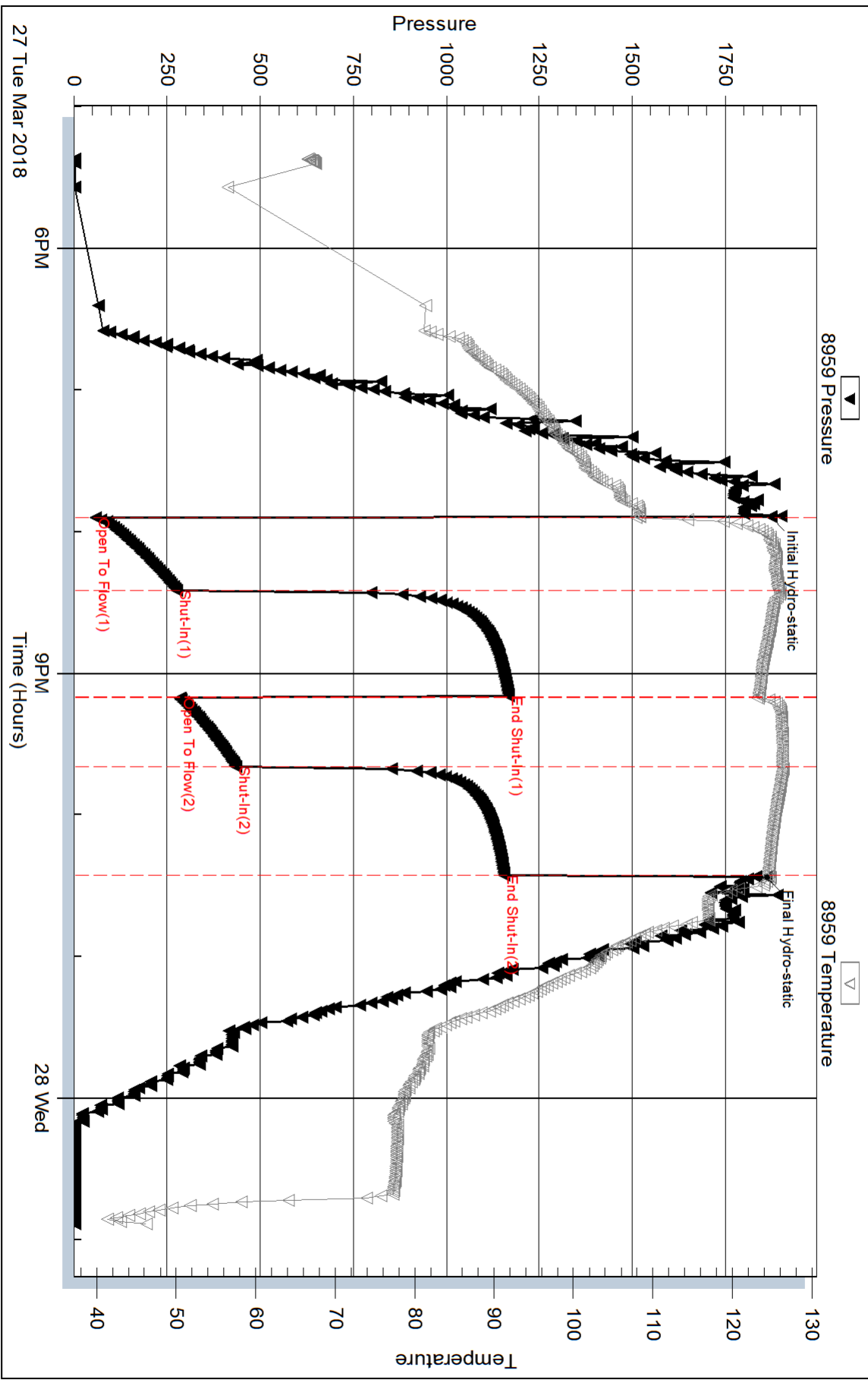
Serial #:

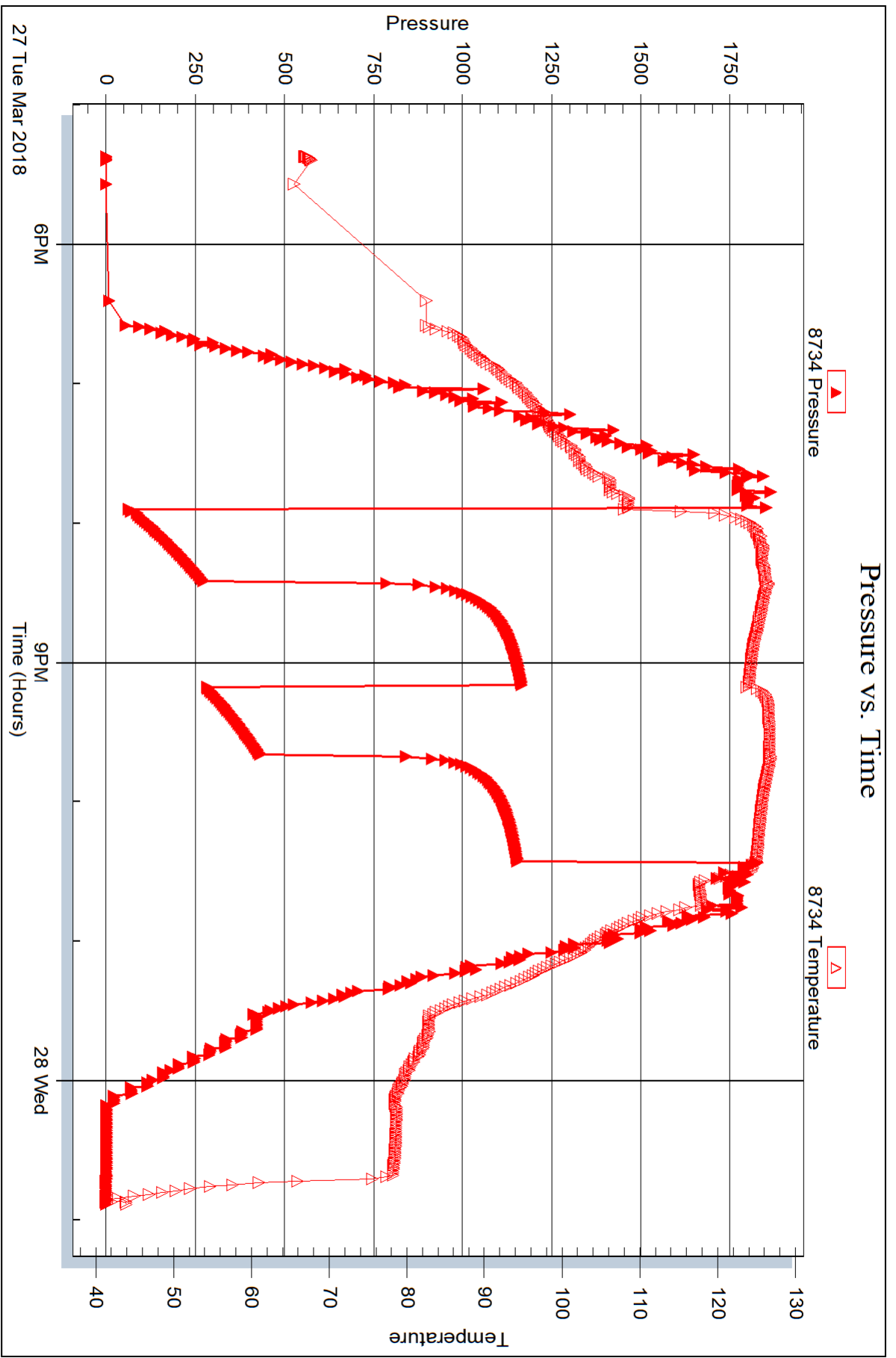
Laboratory Name:

Laboratory Location:

Recovery Comments: RW = .188@ 29.8 degs= 105,000ppm

Pressure vs. Time







DRILL STEM TEST REPORT

Prepared For: **RL Investments LLC**

2698 J O Terrace
Hill City, KS 67642

ATTN: Richard Bell

Pratt A #2-35

35-8S.-29W Sheridan,KS

Start Date: 2018.03.28 @ 08:53:00

End Date: 2018.03.28 @ 15:28:20

Job Ticket #: 63171 DST #: 4

Trilobite Testing, Inc
1515 Commerce Parkway Hays, KS 67601
ph: 785-625-4778 fax: 785-625-5620

Printed: 2018.04.02 @ 15:07:31



TRILOBITE TESTING, INC.

DRILL STEM TEST REPORT

RL Investments LLC
 2698 J O Terrace
 Hill City, KS 67642
 ATTN: Richard Bell

35-8S.-29W Sheridan,KS

Pratt A #2-35

Job Ticket: 63171

DST#: 4

Test Start: 2018.03.28 @ 08:53:00

GENERAL INFORMATION:

Formation: **Oread**
 Deviated: No Whipstock: ft (KB)
 Time Tool Opened: 10:31:40
 Time Test Ended: 15:28:20
 Interval: **3841.00 ft (KB) To 3873.00 ft (KB) (TVD)**
 Total Depth: 3873.00 ft (KB) (TVD)
 Hole Diameter: 7.88 inches Hole Condition: Good
 Test Type: Conventional Bottom Hole (Reset)
 Tester: Martine Salinas
 Unit No: 82
 Reference Elevations: 2828.00 ft (KB)
 2822.00 ft (CF)
 KB to GR/CF: 6.00 ft

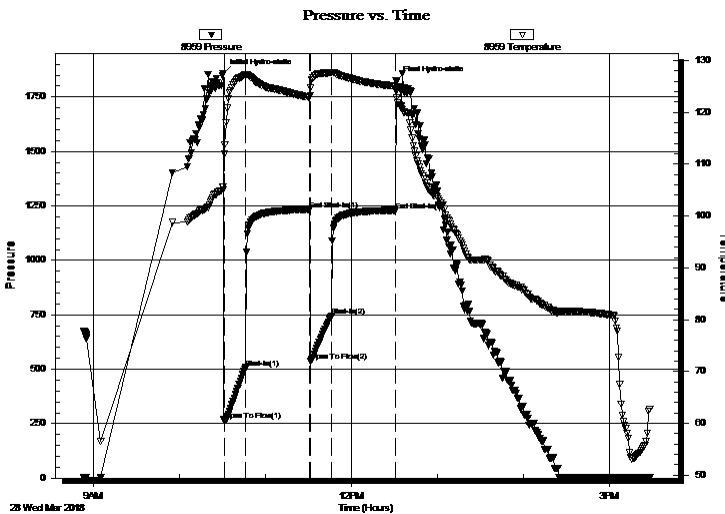
Serial #: 8959

Inside

Press@RunDepth: 745.50 psig @ 3842.00 ft (KB) Capacity: 8000.00 psig
 Start Date: 2018.03.28 End Date: 2018.03.28 Last Calib.: 2018.03.28
 Start Time: 08:53:01 End Time: 15:28:20 Time On Btm: 2018.03.28 @ 10:30:20
 Time Off Btm: 2018.03.28 @ 12:31:10

TEST COMMENT: 15-IF- BOB (12 inches) @ 1 1/2 mins
 45-ISI-Surface.blow back @ 1 1/2 mins built to 1/4"
 15-FF- BOB (12 inches) @ 1 1/2 mins
 45-FSI-No blow

PRESSURE SUMMARY



Time (Min.)	Pressure (psig)	Temp (deg F)	Annotation
0	1858.70	105.61	Initial Hydro-static
2	264.73	113.71	Open To Flow (1)
16	507.11	127.18	Shut-In(1)
61	1233.28	122.89	End Shut-In(1)
61	535.80	123.28	Open To Flow (2)
76	745.50	127.60	Shut-In(2)
121	1228.88	125.03	End Shut-In(2)
121	1825.85	124.09	Final Hydro-static

Recovery

Length (ft)	Description	Volume (bbl)
1182.00	GMSW 4%G, 2%M, 94%W	15.48
252.00	GMCW 2%G, 6%M, 92%W	3.53
73.00	GSOS/HMCW 3%G, 2%O, 33%M, 62%W	1.02

* Recovery from multiple tests

Gas Rates

Choke (inches)	Pressure (psig)	Gas Rate (Mcf/d)



**TRILOBITE
TESTING, INC.**

DRILL STEM TEST REPORT

TOOL DIAGRAM

RL Investments LLC

35-8S.-29W Sheridan,KS

2698 J O Terrace
Hill City, KS 67642

Pratt A #2-35

Job Ticket: 63171

DST#: 4

ATTN: Richard Bell

Test Start: 2018.03.28 @ 08:53:00

Tool Information

Drill Pipe:	Length: 3728.00 ft	Diameter: 3.80 inches	Volume: 52.29 bbl	Tool Weight:	2000.00 lb
Heavy Wt. Pipe:	Length: 0.00 ft	Diameter: 2.75 inches	Volume: 0.00 bbl	Weight set on Packer:	20000.00 lb
Drill Collar:	Length: 121.00 ft	Diameter: 2.25 inches	Volume: 0.60 bbl	Weight to Pull Loose:	62000.00 lb
			<u>Total Volume: 52.89 bbl</u>	Tool Chased	0.00 ft
Drill Pipe Above KB:	28.00 ft			String Weight: Initial	60000.00 lb
Depth to Top Packer:	3841.00 ft			Final	66000.00 lb
Depth to Bottom Packer:	ft				
Interval between Packers:	32.00 ft				
Tool Length:	52.00 ft				
Number of Packers:	2	Diameter: 6.75 inches			
Tool Comments:					

Tool Description	Length (ft)	Serial No.	Position	Depth (ft)	Accum. Lengths
------------------	-------------	------------	----------	------------	----------------

Shut In Tool	5.00			3826.00	
Hydraulic tool	5.00			3831.00	
Packer	5.00			3836.00	20.00 Bottom Of Top Packer
Packer	5.00			3841.00	
Stubb	1.00			3842.00	
Recorder	0.00	8959	Inside	3842.00	
Recorder	0.00	8734	Outside	3842.00	
Perforations	26.00			3868.00	
Bullnose	5.00			3873.00	32.00 Bottom Packers & Anchor
Total Tool Length:	52.00				



**TRILOBITE
TESTING, INC.**

DRILL STEM TEST REPORT

FLUID SUMMARY

RL Investments LLC

35-8S.-29W Sheridan,KS

2698 J O Terrace
Hill City, KS 67642

Pratt A #2-35

Job Ticket: 63171

DST#: 4

ATTN: Richard Bell

Test Start: 2018.03.28 @ 08:53:00

Mud and Cushion Information

Mud Type: Gel Chem

Cushion Type:

Oil API:

deg API

Mud Weight: 9.00 lb/gal

Cushion Length:

ft

Water Salinity:

ppm

Viscosity: 90.00 sec/qt

Cushion Volume:

bbbl

Water Loss: 5.96 in³

Gas Cushion Type:

Resistivity: ohm.m

Gas Cushion Pressure:

psig

Salinity: 2500.00 ppm

Filter Cake: 2.00 inches

Recovery Information

Recovery Table

Length ft	Description	Volume bbl
1182.00	GMSW 4%G, 2%M, 94%W	15.478
252.00	GMCW 2%G, 6%M, 92%W	3.535
73.00	GSOS/HMCW 3%G, 2%O, 33%M, 62%W	1.024

Total Length: 1507.00 ft Total Volume: 20.037 bbl

Num Fluid Samples: 0

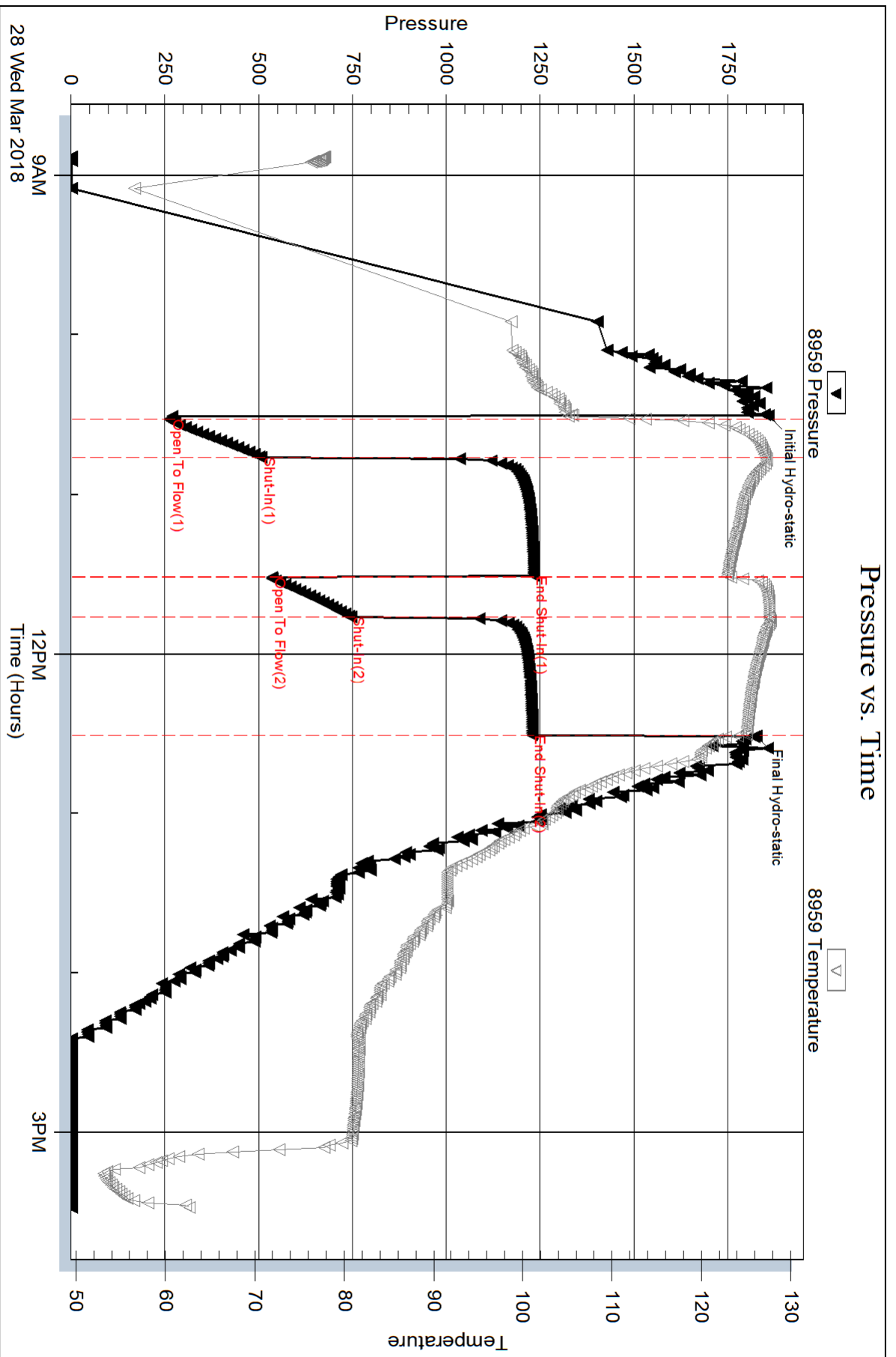
Num Gas Bombs: 0

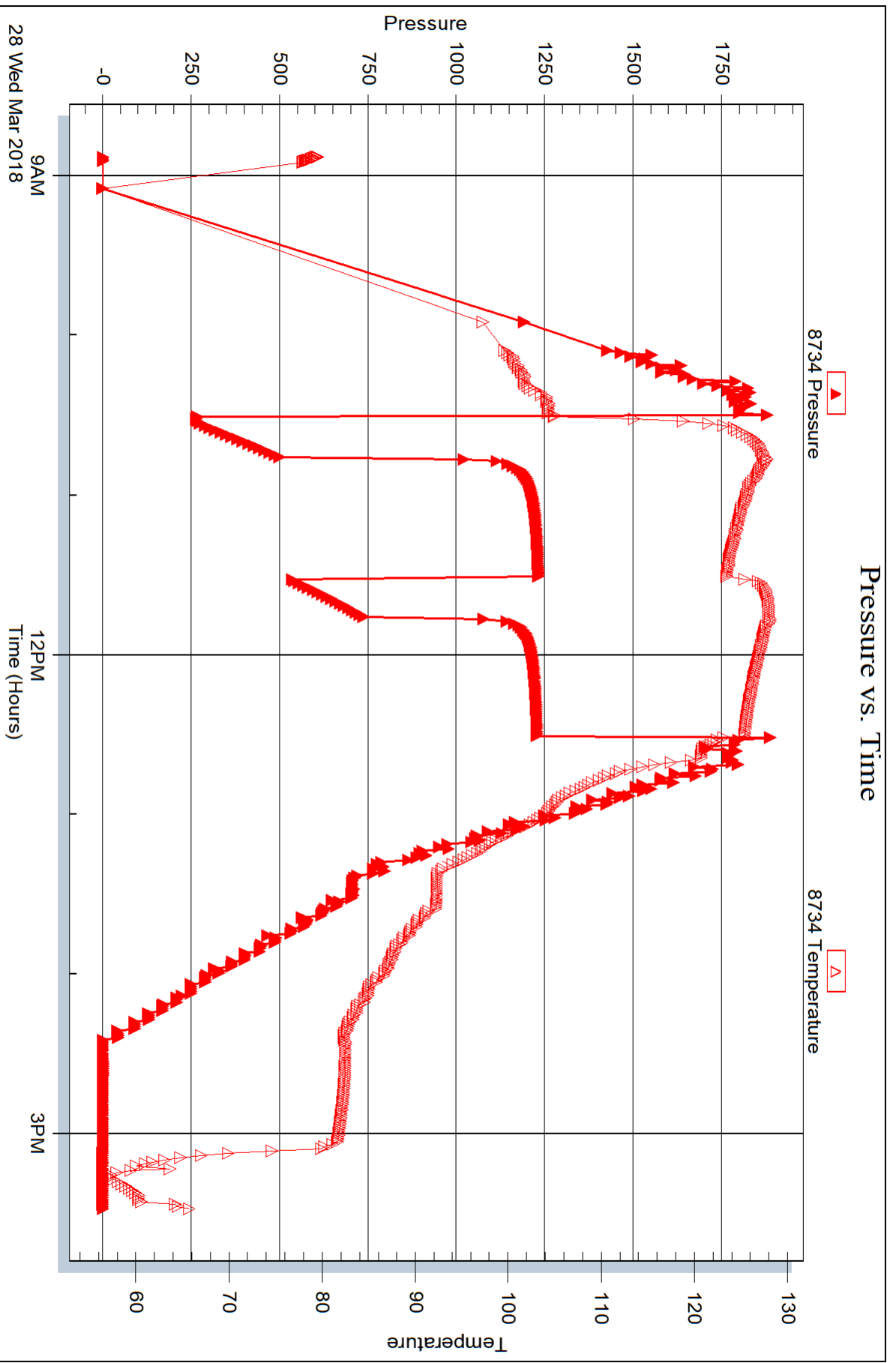
Serial #:

Laboratory Name:

Laboratory Location:

Recovery Comments: RW=.100 @ 66.4 degs=90,000







DRILL STEM TEST REPORT

Prepared For: **RL Investments LLC**

2698 J O Terrace
Hill City, KS 67642

ATTN: Richard Bell

Pratt A #2-35

35-8S.-29W Sheridan,KS

Start Date: 2018.03.29 @ 07:31:00

End Date: 2018.03.29 @ 13:41:00

Job Ticket #: 63172 DST #: 5

Trilobite Testing, Inc
1515 Commerce Parkway Hays, KS 67601
ph: 785-625-4778 fax: 785-625-5620

Printed: 2018.04.02 @ 15:07:12

RL Investments LLC
35-8S.-29W Sheridan,KS
Pratt A #2-35
DST # 5
LKC "E-F"
2018.03.29



TRILOBITE TESTING, INC.

DRILL STEM TEST REPORT

RL Investments LLC
 2698 J O Terrace
 Hill City, KS 67642
 ATTN: Richard Bell

35-8S.-29W Sheridan,KS

Pratt A #2-35

Job Ticket: 63172

DST#: 5

Test Start: 2018.03.29 @ 07:31:00

GENERAL INFORMATION:

Formation: **LKC "E-F"**
 Deviated: No Whipstock: ft (KB)
 Time Tool Opened: 09:19:50
 Time Test Ended: 13:41:00
 Interval: **3982.00 ft (KB) To 4008.00 ft (KB) (TVD)**
 Total Depth: 4008.00 ft (KB) (TVD)
 Hole Diameter: 7.88 inches Hole Condition: Good
 Test Type: Conventional Bottom Hole (Reset)
 Tester: Martine Salinas
 Unit No: 82
 Reference Elevations: 2828.00 ft (KB)
 2822.00 ft (CF)
 KB to GR/CF: 6.00 ft

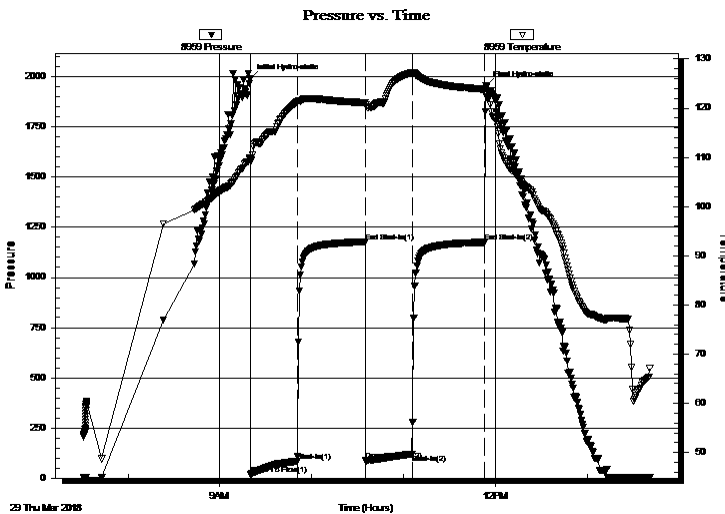
Serial #: 8959

Inside

Press@RunDepth: 120.31 psig @ 3983.00 ft (KB) Capacity: 8000.00 psig
 Start Date: 2018.03.29 End Date: 2018.03.29 Last Calib.: 2018.03.29
 Start Time: 07:31:01 End Time: 13:41:00 Time On Btm: 2018.03.29 @ 09:19:40
 Time Off Btm: 2018.03.29 @ 11:53:50

TEST COMMENT: 30-IF- 1/4" blow built to 8 1/2"
 45-ISI-No blow
 30-FF-Surface blow built to 7 "
 45-FSI-No blow

PRESSURE SUMMARY



Time (Min.)	Pressure (psig)	Temp (deg F)	Annotation
0	1989.10	109.83	Initial Hydro-static
1	17.70	109.18	Open To Flow (1)
31	84.26	121.33	Shut-In(1)
76	1176.73	121.11	End Shut-In(1)
76	86.80	120.58	Open To Flow (2)
106	120.31	127.19	Shut-In(2)
153	1174.97	123.84	End Shut-In(2)
155	1956.22	122.65	Final Hydro-static

Recovery

Length (ft)	Description	Volume (bbl)
247.00	MCW 21%M, 79%W	2.36

* Recovery from multiple tests

Gas Rates

Choke (inches)	Pressure (psig)	Gas Rate (Mcf/d)



**TRILOBITE
TESTING, INC.**

DRILL STEM TEST REPORT

TOOL DIAGRAM

RL Investments LLC

35-8S.-29W Sheridan,KS

2698 J O Terrace
Hill City, KS 67642

Pratt A #2-35

Job Ticket: 63172

DST#: 5

ATTN: Richard Bell

Test Start: 2018.03.29 @ 07:31:00

Tool Information

Drill Pipe:	Length: 3855.00 ft	Diameter: 3.80 inches	Volume: 54.08 bbl	Tool Weight: 2000.00 lb
Heavy Wt. Pipe:	Length: 0.00 ft	Diameter: 2.75 inches	Volume: 0.00 bbl	Weight set on Packer: 20000.00 lb
Drill Collar:	Length: 121.00 ft	Diameter: 2.25 inches	Volume: 0.60 bbl	Weight to Pull Loose: 62000.00 lb
			<u>Total Volume: 54.68 bbl</u>	Tool Chased 0.00 ft
Drill Pipe Above KB:	14.00 ft			String Weight: Initial 57000.00 lb
Depth to Top Packer:	3982.00 ft			Final 60000.00 lb
Depth to Bottom Packer:	ft			
Interval between Packers:	26.00 ft			
Tool Length:	46.00 ft			
Number of Packers:	2	Diameter: 6.75 inches		

Tool Comments:

Tool Description	Length (ft)	Serial No.	Position	Depth (ft)	Accum. Lengths
------------------	-------------	------------	----------	------------	----------------

Shut In Tool	5.00			3967.00	
Hydraulic tool	5.00			3972.00	
Packer	5.00			3977.00	20.00 Bottom Of Top Packer
Packer	5.00			3982.00	
Stubb	1.00			3983.00	
Recorder	0.00	8959	Inside	3983.00	
Recorder	0.00	8734	Outside	3983.00	
Perforations	20.00			4003.00	
Bullnose	5.00			4008.00	26.00 Bottom Packers & Anchor
Total Tool Length:	46.00				



**TRILOBITE
TESTING, INC.**

DRILL STEM TEST REPORT

FLUID SUMMARY

RL Investments LLC

35-8S.-29W Sheridan,KS

2698 J O Terrace
Hill City, KS 67642

Pratt A #2-35

Job Ticket: 63172

DST#: 5

ATTN: Richard Bell

Test Start: 2018.03.29 @ 07:31:00

Mud and Cushion Information

Mud Type: Gel Chem

Cushion Type:

Oil API:

deg API

Mud Weight: 9.00 lb/gal

Cushion Length:

ft

Water Salinity:

50000 ppm

Viscosity: 63.00 sec/qt

Cushion Volume:

bbbl

Water Loss: 5.97 in³

Gas Cushion Type:

Resistivity: ohm.m

Gas Cushion Pressure:

psig

Salinity: 2500.00 ppm

Filter Cake: 2.00 inches

Recovery Information

Recovery Table

Length ft	Description	Volume bbl
247.00	MCW 21%M, 79%W	2.363

Total Length: 247.00 ft Total Volume: 2.363 bbl

Num Fluid Samples: 0

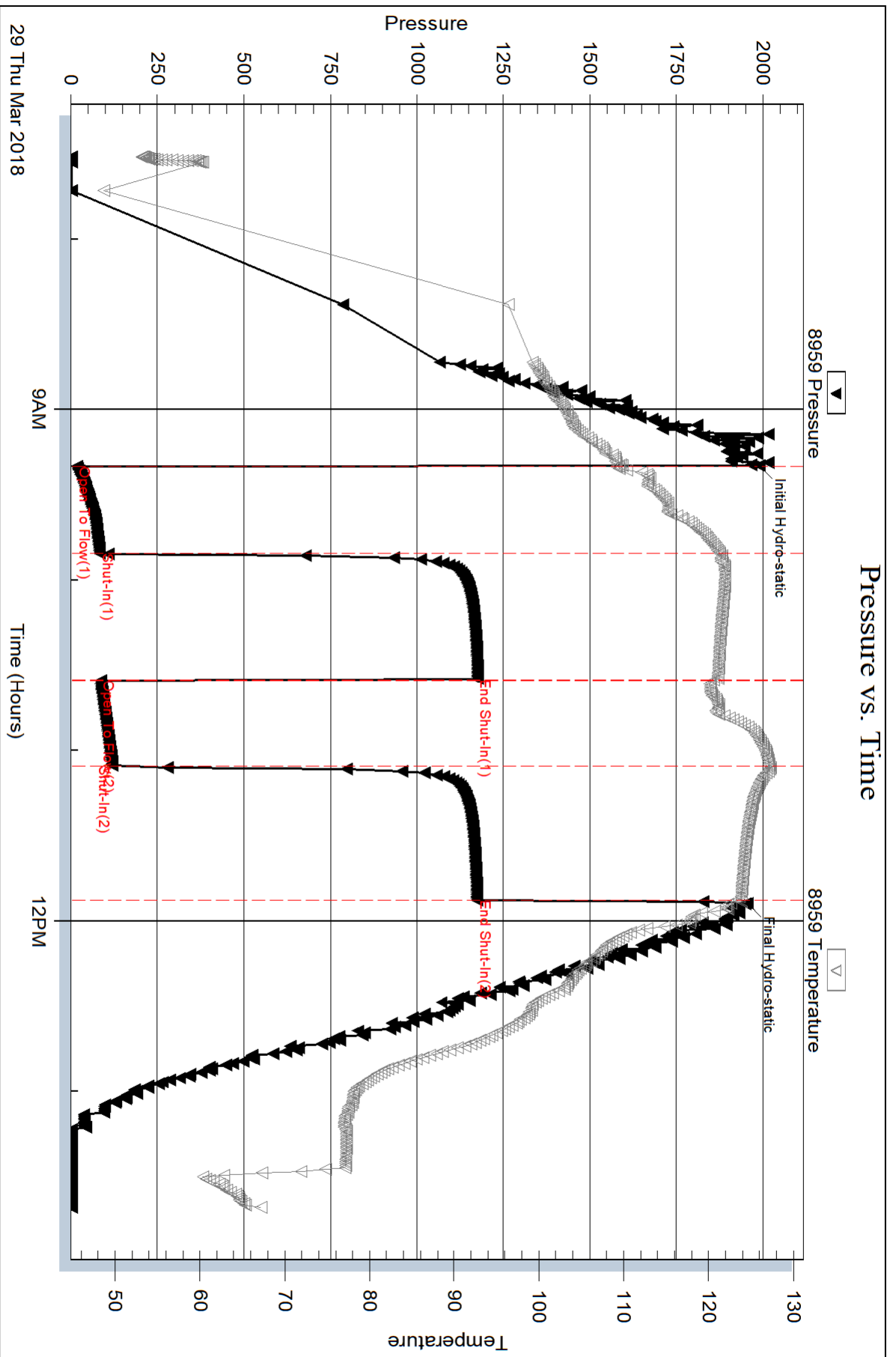
Num Gas Bombs: 0

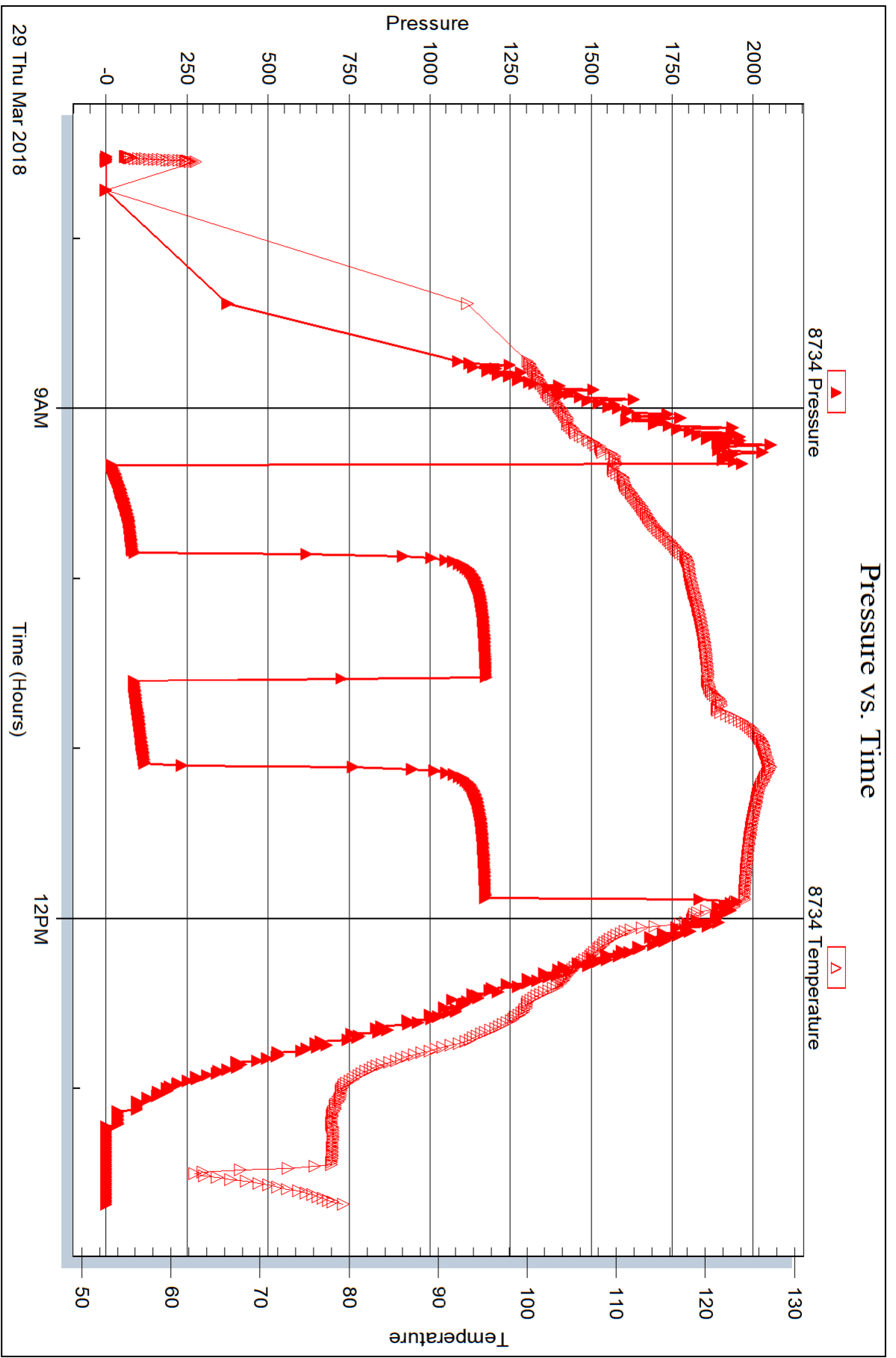
Serial #:

Laboratory Name:

Laboratory Location:

Recovery Comments: RW= .168 @ 67.7 degs = 50,000ppm







DRILL STEM TEST REPORT

Prepared For: **RL Investments LLC**

2698 J O Terrace
Hill City, KS 67642

ATTN: Richard Bell

Pratt A #2-35

35-8S.-29W Sheridan,KS

Start Date: 2018.03.29 @ 22:46:00

End Date: 2018.03.30 @ 06:41:30

Job Ticket #: 63173 DST #: 6

Trilobite Testing, Inc
1515 Commerce Parkway Hays, KS 67601
ph: 785-625-4778 fax: 785-625-5620

Printed: 2018.04.02 @ 14:59:35



TRILOBITE TESTING, INC.

DRILL STEM TEST REPORT

RL Investments LLC
 2698 J O Terrace
 Hill City, KS 67642
 ATTN: Richard Bell

35-8S.-29W Sheridan,KS
Pratt A #2-35
 Job Ticket: 63173 **DST#: 6**
 Test Start: 2018.03.29 @ 22:46:00

GENERAL INFORMATION:

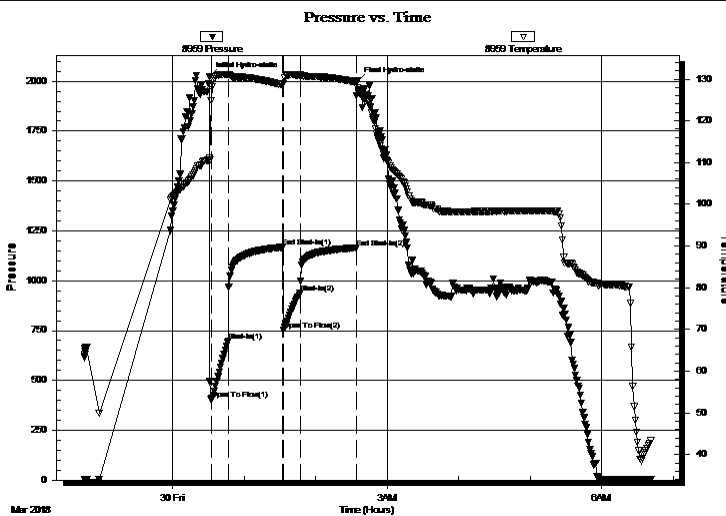
Formation: **LKC " H"**
 Deviated: No Whipstock: ft (KB)
 Time Tool Opened: 00:32:00
 Time Test Ended: 06:41:30
 Interval: **4038.00 ft (KB) To 4064.00 ft (KB) (TVD)**
 Total Depth: 4064.00 ft (KB) (TVD)
 Hole Diameter: 7.88 inches Hole Condition: Good
 Test Type: Conventional Bottom Hole (Reset)
 Tester: Martine Salinas
 Unit No: 82
 Reference Elevations: 2828.00 ft (KB)
 2822.00 ft (CF)
 KB to GR/CF: 6.00 ft

Serial #: 8959

Inside

Press@RunDepth: 937.25 psig @ 4039.00 ft (KB) Capacity: 8000.00 psig
 Start Date: 2018.03.29 End Date: 2018.03.30 Last Calib.: 2018.03.30
 Start Time: 22:46:01 End Time: 06:41:30 Time On Btm: 2018.03.30 @ 00:30:50
 Time Off Btm: 2018.03.30 @ 02:35:00

TEST COMMENT: 15-IF- BOB (12 inches) @ 40 secs
 45-ISI-BOB (12 inches) @ 19 mins
 15-FF- BOB (12 inches) @ 1 min
 45-FSI- BOB (12 inches) @ 20 1/2 mins



PRESSURE SUMMARY

Time (Min.)	Pressure (psig)	Temp (deg F)	Annotation
0	2022.95	111.06	Initial Hydro-static
2	403.84	124.87	Open To Flow (1)
16	696.74	131.11	Shut-In(1)
62	1167.32	128.65	End Shut-In(1)
63	752.58	128.89	Open To Flow (2)
76	937.25	130.96	Shut-In(2)
123	1163.75	129.34	End Shut-In(2)
125	1999.96	127.89	Final Hydro-static

Recovery

Length (ft)	Description	Volume (bbl)
121.00	HMCW 30%M, 70%W	0.60
0.00	0-25 MINS SMC/GHOCW 6%M, 19%G, 370.0038%W	
0.00	-40 SMC/GSOCW8%M,3G,10%O,79W	90.00EV
273.00	SMC/GHWCO 7%M, 27%G, 25W, 41%O	3.83
10.00	CGO 5%G, 95%O	0.14
0.00	850' GIP	0.00

Gas Rates

	Choke (inches)	Pressure (psig)	Gas Rate (Mcf/d)

* Recovery from multiple tests



**TRILOBITE
TESTING, INC.**

DRILL STEM TEST REPORT

TOOL DIAGRAM

RL Investments LLC

35-8S.-29W Sheridan,KS

2698 J O Terrace
Hill City, KS 67642

Pratt A #2-35

Job Ticket: 63173

DST#: 6

ATTN: Richard Bell

Test Start: 2018.03.29 @ 22:46:00

Tool Information

Drill Pipe:	Length: 3919.00 ft	Diameter: 3.80 inches	Volume: 54.97 bbl	Tool Weight: 2000.00 lb
Heavy Wt. Pipe:	Length: 0.00 ft	Diameter: 2.75 inches	Volume: 0.00 bbl	Weight set on Packer: 20000.00 lb
Drill Collar:	Length: 121.00 ft	Diameter: 2.25 inches	Volume: 0.60 bbl	Weight to Pull Loose: 67000.00 lb
			<u>Total Volume: 55.57 bbl</u>	Tool Chased 0.00 ft
Drill Pipe Above KB:	22.00 ft			String Weight: Initial 59000.00 lb
Depth to Top Packer:	4038.00 ft			Final 64000.00 lb
Depth to Bottom Packer:	ft			
Interval between Packers:	26.00 ft			
Tool Length:	46.00 ft			
Number of Packers:	2	Diameter: 6.75 inches		

Tool Comments:

Tool Description

Tool Description	Length (ft)	Serial No.	Position	Depth (ft)	Accum. Lengths
Shut In Tool	5.00			4023.00	
Hydraulic tool	5.00			4028.00	
Packer	5.00			4033.00	20.00 Bottom Of Top Packer
Packer	5.00			4038.00	
Stubb	1.00			4039.00	
Recorder	0.00	8959	Inside	4039.00	
Recorder	0.00	8734	Outside	4039.00	
Perforations	20.00			4059.00	
Bullnose	5.00			4064.00	26.00 Bottom Packers & Anchor
Total Tool Length:	46.00				



**TRILOBITE
TESTING, INC.**

DRILL STEM TEST REPORT

FLUID SUMMARY

RL Investments LLC
2698 J O Terrace
Hill City, KS 67642
ATTN: Richard Bell

35-8S.-29W Sheridan,KS
Pratt A #2-35
Job Ticket: 63173 **DST#: 6**
Test Start: 2018.03.29 @ 22:46:00

Mud and Cushion Information

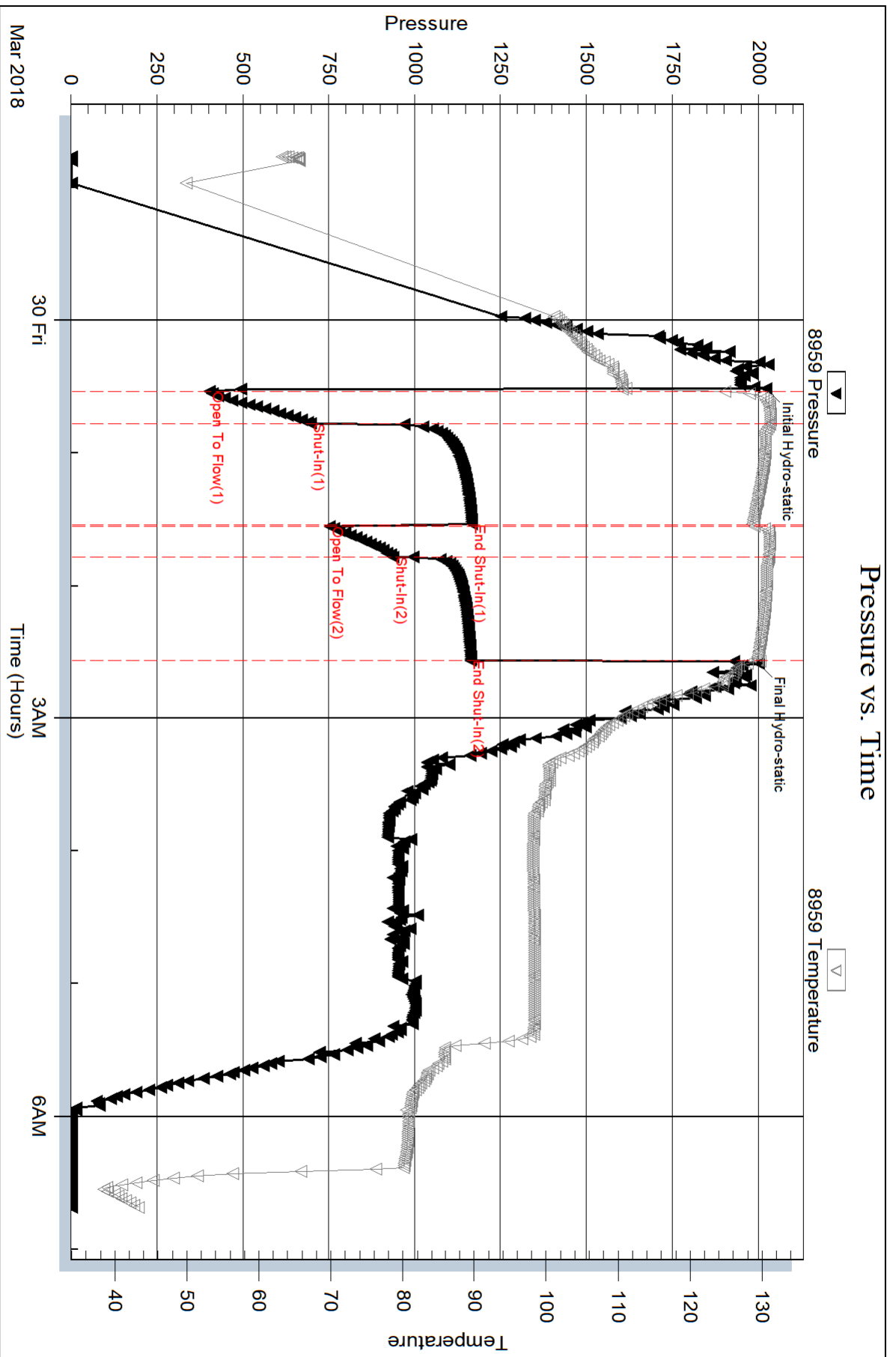
Mud Type: Gel Chem	Cushion Type:	Oil API: 43.7 deg API
Mud Weight: 9.00 lb/gal	Cushion Length: ft	Water Salinity: 110000 ppm
Viscosity: 60.00 sec/qt	Cushion Volume: bbl	
Water Loss: 6.38 in ³	Gas Cushion Type:	
Resistivity: ohm.m	Gas Cushion Pressure: psig	
Salinity: 2700.00 ppm		
Filter Cake: 2.00 inches		

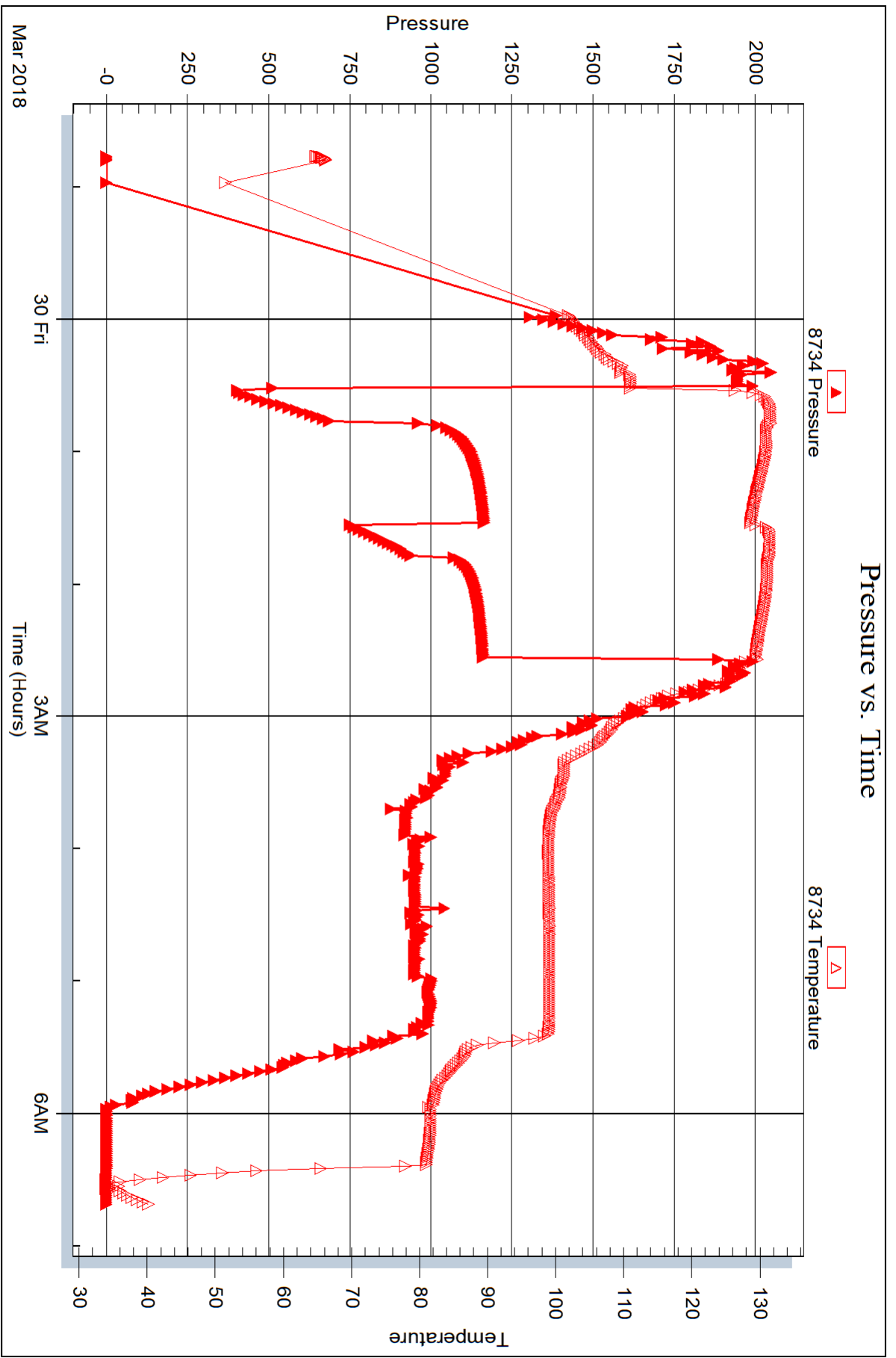
Recovery Information

Recovery Table

Length ft	Description	Volume bbl
121.00	HMCW 30%M, 70%W	0.595
0.00	0-25 MINS SMC/GHOCW 6%M, 19%G, 37%O,	0.000
0.00	-40 SMC/GSOCW8%M,3G,10%O,79W 1912 F	0.000
273.00	SMC/GHWCO 7%M, 27%G, 25W, 41%O	3.829
10.00	CGO 5%G, 95%O	0.140
0.00	850' GIP	0.000

Total Length: 404.00 ft Total Volume: 4.564 bbl
Num Fluid Samples: 0 Num Gas Bombs: 0 Serial #:
Laboratory Name: Laboratory Location:
Recovery Comments: Gravity of oil =39.9 @ 22 degs
Gravity corrected to 43.7 @ 60 degs
RW=.203@ 17.6 degs= 110000







DRILL STEM TEST REPORT

Prepared For: **RL Investments LLC**

2698 J O Terrace
Hill City, KS 67642

ATTN: Richard Bell

Pratt A #2-35

35-8S.-29W Sheridan,KS

Start Date: 2018.03.30 @ 14:31:00

End Date: 2018.03.30 @ 23:01:20

Job Ticket #: 63174 DST #: 7

Trilobite Testing, Inc
1515 Commerce Parkway Hays, KS 67601
ph: 785-625-4778 fax: 785-625-5620

Printed: 2018.04.02 @ 14:59:13



TRILOBITE TESTING, INC.

DRILL STEM TEST REPORT

RL Investments LLC
 2698 J O Terrace
 Hill City, KS 67642
 ATTN: Richard Bell

35-8S.-29W Sheridan,KS

Pratt A #2-35

Job Ticket: 63174

DST#: 7

Test Start: 2018.03.30 @ 14:31:00

GENERAL INFORMATION:

Formation: **LKC " J "**
 Deviated: No Whipstock: ft (KB)
 Time Tool Opened: 16:18:50
 Time Test Ended: 23:01:20
 Interval: **4091.00 ft (KB) To 4114.00 ft (KB) (TVD)**
 Total Depth: 4114.00 ft (KB) (TVD)
 Hole Diameter: 7.88 inches Hole Condition: Good
 Test Type: Conventional Bottom Hole (Reset)
 Tester: Martine Salinas
 Unit No: 82
 Reference Elevations: 2828.00 ft (KB)
 2822.00 ft (CF)
 KB to GR/CF: 6.00 ft

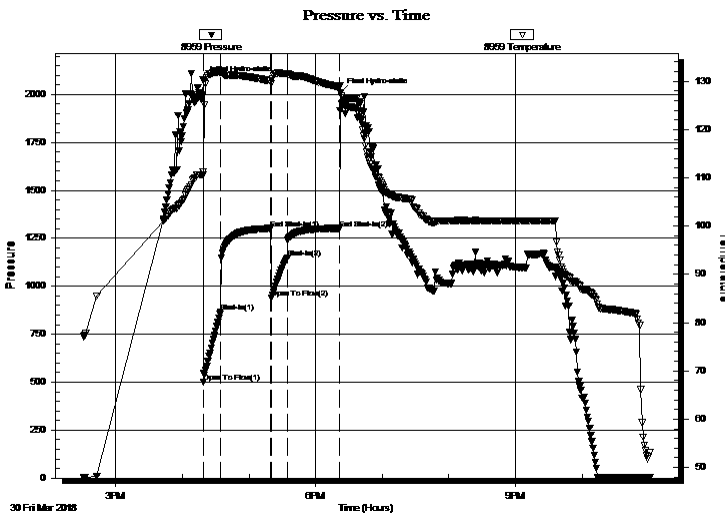
Serial #: 8959

Inside

Press@RunDepth: 1147.53 psig @ 4092.00 ft (KB) Capacity: 8000.00 psig
 Start Date: 2018.03.30 End Date: 2018.03.30 Last Calib.: 2018.03.30
 Start Time: 14:31:01 End Time: 23:01:20 Time On Btm: 2018.03.30 @ 16:18:40
 Time Off Btm: 2018.03.30 @ 18:22:30

TEST COMMENT: 15-IF-BOB (12 inches) @ 40 secs
 45-ISI-Blow back @ 1 1/2 mins built to 1/4"
 15-FF-BOB (12 inches) @ 1 min
 45-FSI-No blow

PRESSURE SUMMARY



Time (Min.)	Pressure (psig)	Temp (deg F)	Annotation
0	2074.13	111.25	Initial Hydro-static
1	501.56	110.70	Open To Flow (1)
16	865.83	131.76	Shut-In(1)
61	1301.46	130.03	End Shut-In(1)
62	939.95	129.46	Open To Flow (2)
76	1147.53	131.57	Shut-In(2)
123	1301.85	128.87	End Shut-In(2)
124	2007.16	127.53	Final Hydro-static

Recovery

Length (ft)	Description	Volume (bbl)
121.00	OSHM CW 3%O, 40%M, 57%W	0.60
2289.00	MS/GHWCO 4%M, 6%G, 35%W, 55%O	32.11
378.00	MS/GWCO 5%M, 21%G, 20%W, 54%O	5.30

Gas Rates

	Choke (inches)	Pressure (psig)	Gas Rate (Mcf/d)

* Recovery from multiple tests



**TRILOBITE
TESTING, INC.**

DRILL STEM TEST REPORT

TOOL DIAGRAM

RL Investments LLC

35-8S.-29W Sheridan,KS

2698 J O Terrace
Hill City, KS 67642

Pratt A #2-35

Job Ticket: 63174

DST#: 7

ATTN: Richard Bell

Test Start: 2018.03.30 @ 14:31:00

Tool Information

Drill Pipe:	Length: 3983.00 ft	Diameter: 3.80 inches	Volume: 55.87 bbl	Tool Weight: 2000.00 lb
Heavy Wt. Pipe:	Length: 0.00 ft	Diameter: 2.75 inches	Volume: 0.00 bbl	Weight set on Packer: 20000.00 lb
Drill Collar:	Length: 121.00 ft	Diameter: 2.25 inches	Volume: 0.60 bbl	Weight to Pull Loose: 75000.00 lb
			<u>Total Volume: 56.47 bbl</u>	Tool Chased 0.00 ft
Drill Pipe Above KB:	33.00 ft			String Weight: Initial 62000.00 lb
Depth to Top Packer:	4091.00 ft			Final 72000.00 lb
Depth to Bottom Packer:	ft			
Interval between Packers:	23.00 ft			
Tool Length:	43.00 ft			
Number of Packers:	2	Diameter: 6.75 inches		

Tool Comments:

Tool Description	Length (ft)	Serial No.	Position	Depth (ft)	Accum. Lengths
------------------	-------------	------------	----------	------------	----------------

Shut In Tool	5.00			4076.00	
Hydraulic tool	5.00			4081.00	
Packer	5.00			4086.00	20.00 Bottom Of Top Packer
Packer	5.00			4091.00	
Stubb	1.00			4092.00	
Recorder	0.00	8959	Inside	4092.00	
Recorder	0.00	8734	Outside	4092.00	
Perforations	17.00			4109.00	
Bullnose	5.00			4114.00	23.00 Bottom Packers & Anchor
Total Tool Length:	43.00				



**TRILOBITE
TESTING, INC.**

DRILL STEM TEST REPORT

FLUID SUMMARY

RL Investments LLC
2698 J O Terrace
Hill City, KS 67642
ATTN: Richard Bell

35-8S.-29W Sheridan,KS
Pratt A #2-35
Job Ticket: 63174 **DST#: 7**
Test Start: 2018.03.30 @ 14:31:00

Mud and Cushion Information

Mud Type: Gel Chem	Cushion Type:	Oil API: 42.2 deg API
Mud Weight: 9.00 lb/gal	Cushion Length: ft	Water Salinity: 80000 ppm
Viscosity: 67.00 sec/qt	Cushion Volume: bbl	
Water Loss: 6.39 in ³	Gas Cushion Type:	
Resistivity: ohm.m	Gas Cushion Pressure: psig	
Salinity: 2700.00 ppm		
Filter Cake: 2.00 inches		

Recovery Information

Recovery Table

Length ft	Description	Volume bbl
121.00	OSHMCW 3%O, 40%M, 57%W	0.595
2289.00	MS/GHWCO 4%M, 6%G,35%W, 55%O Rever	32.109
378.00	MS/GWCO 5%M, 21%G, 20%W, 54%O	5.302

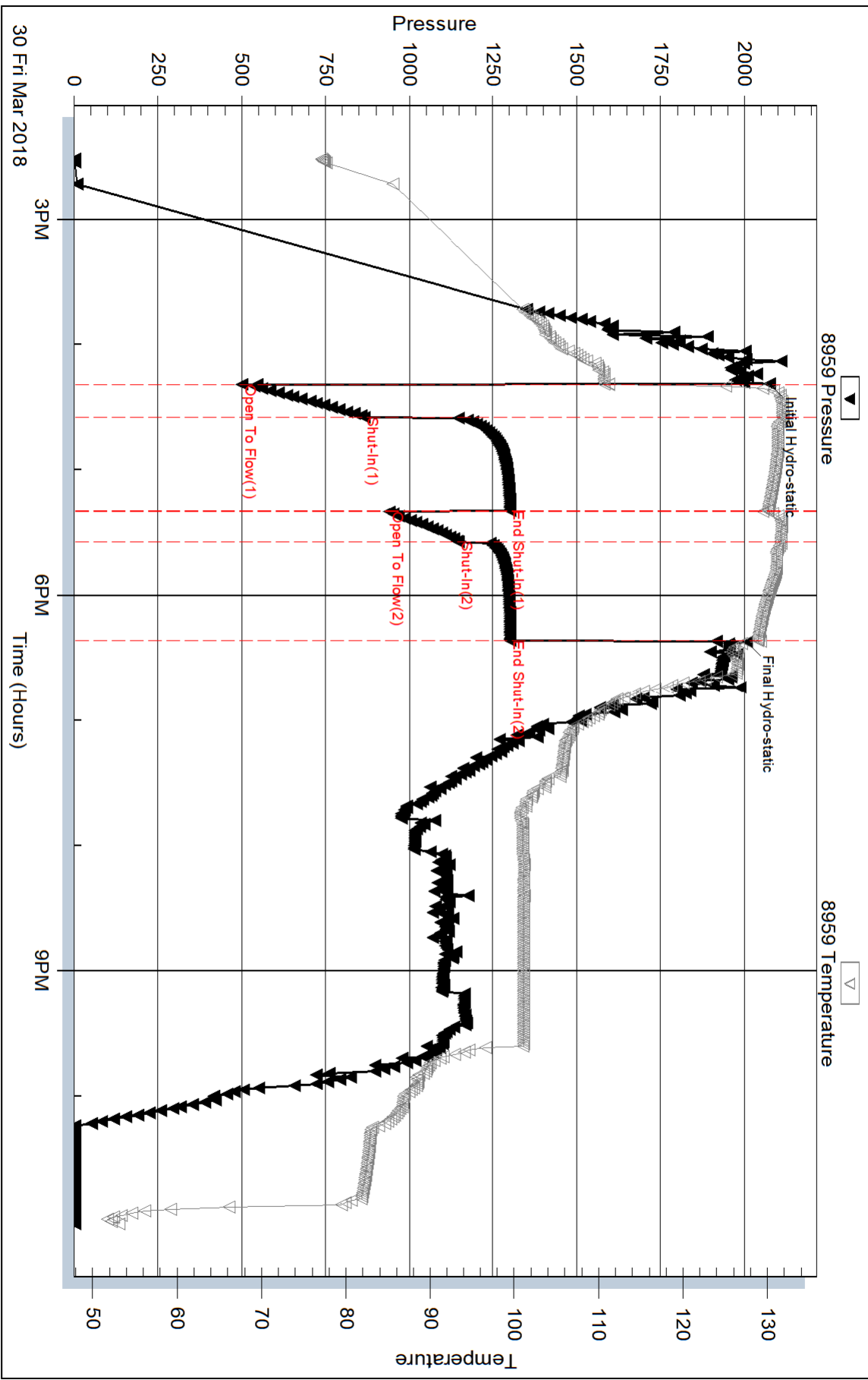
Total Length: 2788.00 ft Total Volume: 38.006 bbl

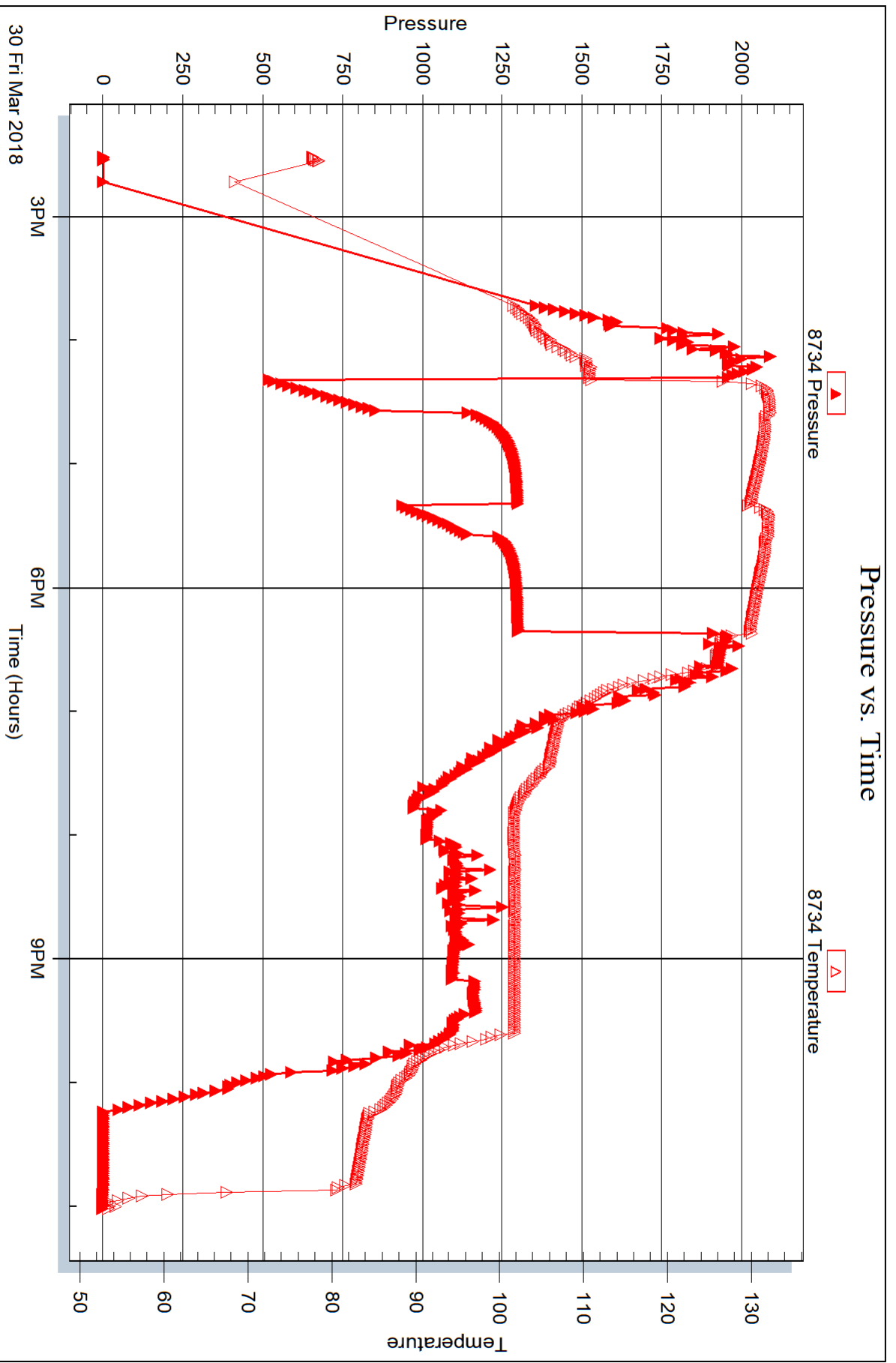
Num Fluid Samples: 0 Num Gas Bombs: 0 Serial #:

Laboratory Name: Laboratory Location:

Recovery Comments: Gravity of oil = 40.8 @ 46 degs
Gravity corrected to 42.2 @ 60 degs
RW= .125 @ 57 degs = 80,000

Pressure vs. Time







DRILL STEM TEST REPORT

Prepared For: **RL Investments LLC**

2698 J O Terrace
Hill City, KS 67642

ATTN: Richard Bell

Pratt A #2-35

35-8S.-29W Sheridan,KS

Start Date: 2018.03.31 @ 20:23:00

End Date: 2018.04.01 @ 02:56:09

Job Ticket #: 63175 DST #: 8

Trilobite Testing, Inc
1515 Commerce Parkway Hays, KS 67601
ph: 785-625-4778 fax: 785-625-5620

Printed: 2018.04.02 @ 14:58:43



**TRILOBITE
TESTING, INC.**

DRILL STEM TEST REPORT

RL Investments LLC
2698 J O Terrace
Hill City, KS 67642
ATTN: Richard Bell

35-8S.-29W Sheridan,KS

Pratt A #2-35

Job Ticket: 63175

DST#: 8

Test Start: 2018.03.31 @ 20:23:00

GENERAL INFORMATION:

Formation: **Ft. Scott**

Deviated: No Whipstock: ft (KB)

Time Tool Opened: 22:35:50

Time Test Ended: 02:56:09

Test Type: Conventional Bottom Hole (Reset)

Tester: Martine Salinas

Unit No: 82

Interval: **4330.00 ft (KB) To 4380.00 ft (KB) (TVD)**

Total Depth: 4380.00 ft (KB) (TVD)

Hole Diameter: 7.88 inches Hole Condition: Good

Reference Elevations: 2828.00 ft (KB)

2822.00 ft (CF)

KB to GR/CF: 6.00 ft

Serial #: 8959

Inside

Press@RunDepth: 17.64 psig @ 4331.00 ft (KB)

Start Date: 2018.03.31

End Date:

2018.04.01

Start Time: 20:23:01

End Time:

02:56:10

Capacity: 8000.00 psig

Last Calib.: 2018.04.01

Time On Btm: 2018.03.31 @ 22:35:40

Time Off Btm: 2018.04.01 @ 01:08:39

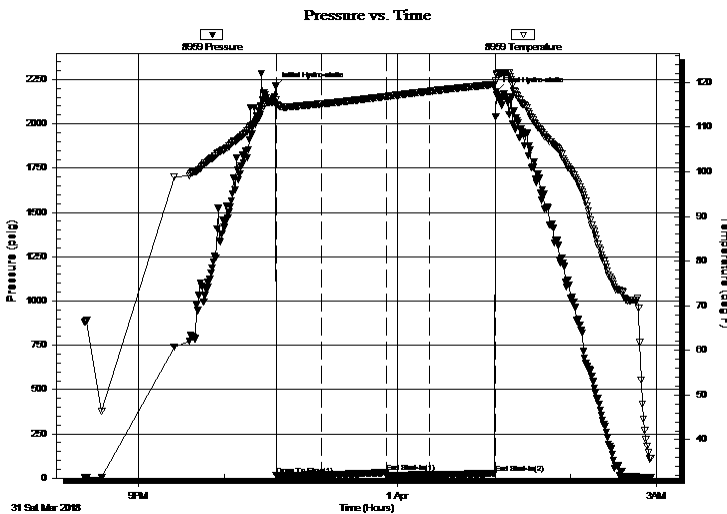
TEST COMMENT: 30-IF-Surface blow built to 1 1/4"

45-ISI-No blow

30-FF-No blow

45-FSI-No blow

PRESSURE SUMMARY



Time (Min.)	Pressure (psig)	Temp (deg F)	Annotation
0	2212.34	116.00	Initial Hydro-static
1	16.54	115.09	Open To Flow (1)
32	17.26	115.19	Shut-In(1)
77	30.70	116.84	End Shut-In(1)
77	17.06	116.84	Open To Flow (2)
107	17.64	118.01	Shut-In(2)
152	26.34	119.58	End Shut-In(2)
153	2182.12	121.80	Final Hydro-static

Recovery

Length (ft)	Description	Volume (bbl)
3.00	100% Mud	0.01

Gas Rates

Choke (inches)	Pressure (psig)	Gas Rate (Mcf/d)

* Recovery from multiple tests



**TRILOBITE
TESTING, INC.**

DRILL STEM TEST REPORT

TOOL DIAGRAM

RL Investments LLC

35-8S.-29W Sheridan,KS

2698 J O Terrace
Hill City, KS 67642

Pratt A #2-35

Job Ticket: 63175

DST#: 8

ATTN: Richard Bell

Test Start: 2018.03.31 @ 20:23:00

Tool Information

Drill Pipe:	Length: 4204.00 ft	Diameter: 3.80 inches	Volume: 58.97 bbl	Tool Weight: 2000.00 lb
Heavy Wt. Pipe:	Length: 0.00 ft	Diameter: 2.75 inches	Volume: 0.00 bbl	Weight set on Packer: 20000.00 lb
Drill Collar:	Length: 121.00 ft	Diameter: 2.25 inches	Volume: 0.60 bbl	Weight to Pull Loose: 70000.00 lb
			<u>Total Volume: 59.57 bbl</u>	Tool Chased 0.00 ft
Drill Pipe Above KB:	15.00 ft			String Weight: Initial 60000.00 lb
Depth to Top Packer:	4330.00 ft			Final 60000.00 lb
Depth to Bottom Packer:	ft			
Interval between Packers:	50.00 ft			
Tool Length:	70.00 ft			
Number of Packers:	2	Diameter: 6.75 inches		

Tool Comments:

Tool Description	Length (ft)	Serial No.	Position	Depth (ft)	Accum. Lengths
------------------	-------------	------------	----------	------------	----------------

Shut In Tool	5.00			4315.00	
Hydraulic tool	5.00			4320.00	
Packer	5.00			4325.00	20.00 Bottom Of Top Packer
Packer	5.00			4330.00	
Stubb	1.00			4331.00	
Recorder	0.00	8959	Inside	4331.00	
Recorder	0.00	8734	Outside	4331.00	
Perforations	10.00			4341.00	
Change Over Sub	1.00			4342.00	
Drill Pipe	32.00			4374.00	
Change Over Sub	1.00			4375.00	
Bullnose	5.00			4380.00	50.00 Bottom Packers & Anchor

Total Tool Length: 70.00



**TRILOBITE
TESTING, INC.**

DRILL STEM TEST REPORT

FLUID SUMMARY

RL Investments LLC
2698 J O Terrace
Hill City, KS 67642
ATTN: Richard Bell

35-8S.-29W Sheridan,KS
Pratt A #2-35
Job Ticket: 63175 **DST#: 8**
Test Start: 2018.03.31 @ 20:23:00

Mud and Cushion Information

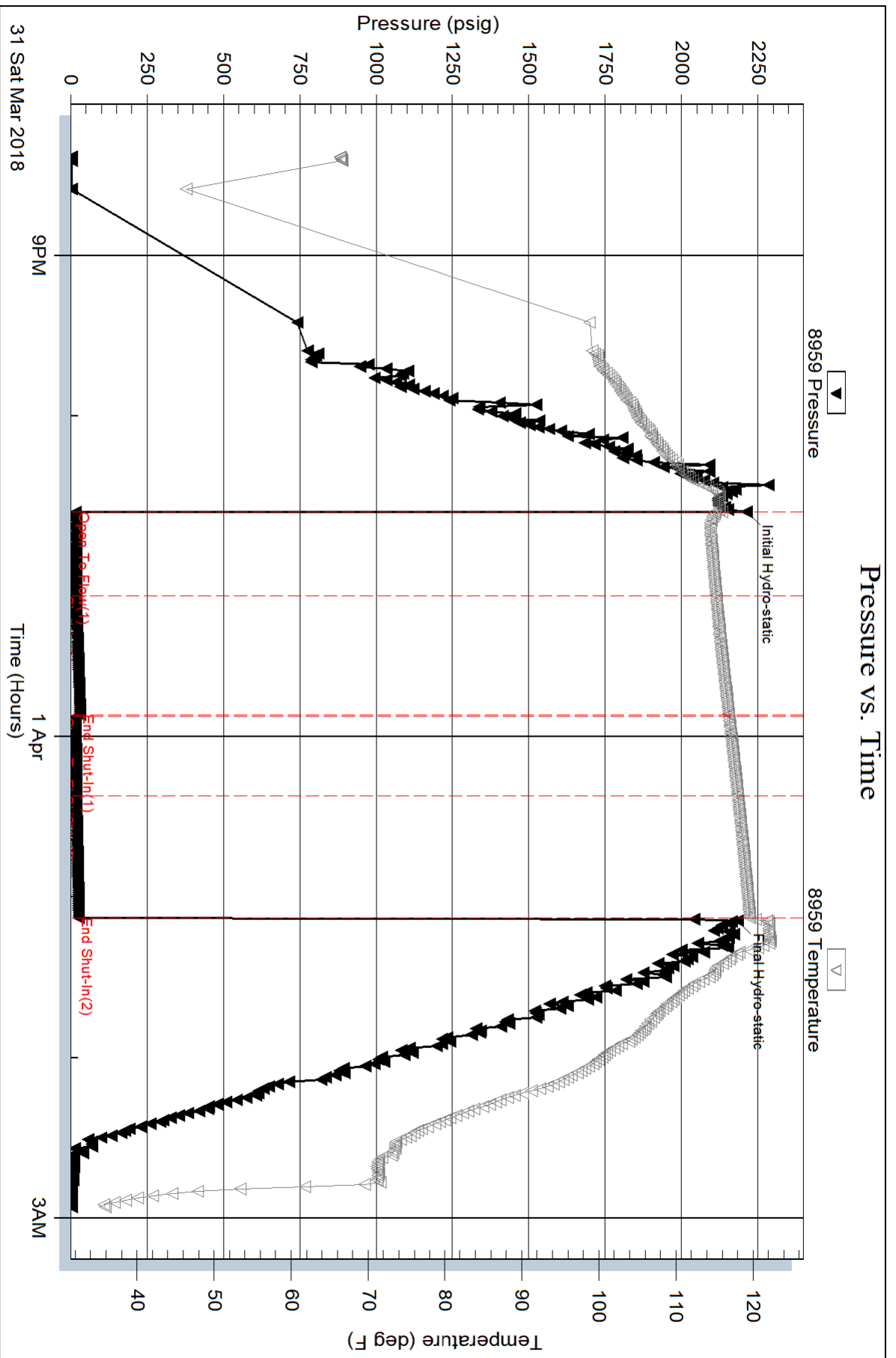
Mud Type: Gel Chem	Cushion Type:	Oil API:	deg API
Mud Weight: 9.00 lb/gal	Cushion Length: ft	Water Salinity:	ppm
Viscosity: 61.00 sec/qt	Cushion Volume: bbl		
Water Loss: 7.19 in ³	Gas Cushion Type:		
Resistivity: ohm.m	Gas Cushion Pressure: psig		
Salinity: 4000.00 ppm			
Filter Cake: 2.00 inches			

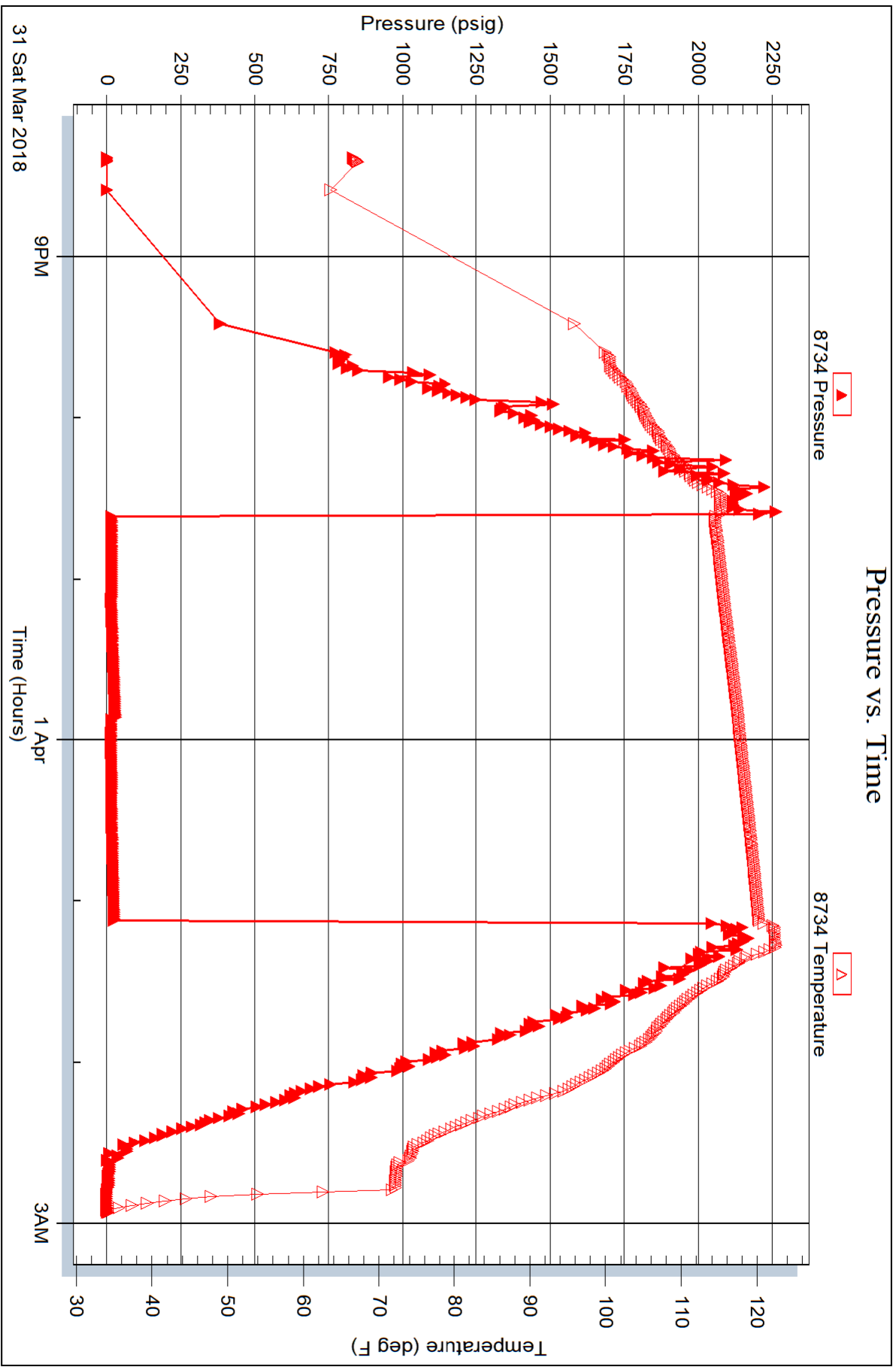
Recovery Information

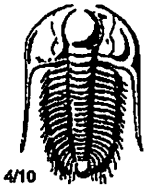
Recovery Table

Length ft	Description	Volume bbl
3.00	100% Mud	0.015

Total Length: 3.00 ft Total Volume: 0.015 bbl
Num Fluid Samples: 0 Num Gas Bombs: 0 Serial #:
Laboratory Name: Laboratory Location:
Recovery Comments:







TRILOBITE TESTING INC.

1515 Commerce Parkway • Hays, Kansas 67601

Test Ticket

NO. 63168

Well Name & No. Pratt A# 2-35 Test No. 1 Date 03-26-18
 Company RL Investment LLC Elevation 2828 KB 2822 GL
 Address 2898 S O Terrace Hill City, Ks 67642
 Co. Rep / Geo. Richard Bell Rig STP #1
 Location: Sec. 35 Twp. 8S. Rge. 29W Co. Sheridan State KS

Interval Tested 3671-3700 Zone Tested Topeka
 Anchor Length 29 Drill Pipe Run 3537 Mud Wt. 8.8
 Top Packer Depth 3666 Drill Collars Run 121 Vis 63
 Bottom Packer Depth 3671 Wt. Pipe Run _____ WL 7.2
 Total Depth 3700 Chlorides 700 ppm System LCM 2#

Blow Description IF - S. blow built to 3/4"
ISI - No blow
FF - No blow
FST - No blow

Rec	Feet of	%gas	%oil	%water	%mud
<u>5</u>	<u>SOCM</u>		<u>7</u>	<u>9.3</u>	
Rec _____	Feet of _____	%gas _____	%oil _____	%water _____	%mud _____
Rec _____	Feet of _____	%gas _____	%oil _____	%water _____	%mud _____
Rec _____	Feet of _____	%gas _____	%oil _____	%water _____	%mud _____
Rec _____	Feet of _____	%gas _____	%oil _____	%water _____	%mud _____

Rec Total 5 BHT 110 Gravity _____ API RW _____ @ _____ °F Chlorides _____ ppm

- (A) Initial Hydrostatic 1770
- (B) First Initial Flow 15
- (C) First Final Flow 17
- (D) Initial Shut-In 718
- (E) Second Initial Flow 18
- (F) Second Final Flow 19
- (G) Final Shut-In 524
- (H) Final Hydrostatic 1716

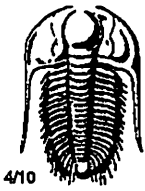
- Test 1050
- Jars _____
- Safety Joint _____
- Circ Sub _____
- Hourly Standby _____
- Mileage 94 RT 94
- Sampler _____
- Straddle _____
- Shale Packer _____
- Extra Packer _____
- Extra Recorder _____
- Day Standby _____
- Accessibility _____
- Sub Total 1144

T-On Location 11:20
 T-Started 12:00
 T-Open 14:04
 T-Pulled 16:34
 T-Out 18:21
 Comments _____
 Ruined Shale Packer _____
 Ruined Packer _____
 Extra Copies _____
 Sub Total 0
 Total 1144
 MP/DST Disc't _____

Initial Open 30
 Initial Shut-In 45
 Final Flow 30
 Final Shut-In 45

Approved By Richard Bell

Our Representative [Signature]



TRILOBITE TESTING INC.

1515 Commerce Parkway • Hays, Kansas 67601

Test Ticket

NO. 63169

Well Name & No. Pratt A # 2-35 Test No. 2 Date 03-27-18
 Company RL Investment LLC Elevation 2828 KB 2822 GL
 Address 2698 J O Terrace Hill City, KS 67642
 Co. Rep / Geo. Richard Bell Rlg. STP #1
 Location: Sec. 35 Twp. 8S. Rge. 29W. Co. Sheridan State KS

Interval Tested 3770-3786 Zone Tested Tecumseh Sand
 Anchor Length 16' Drill Pipe Run 3664 Mud Wt. 8.9
 Top Packer Depth 3765 Drill Collars Run 91 Vis 60
 Bottom Packer Depth 3770 Wt. Pipe Run --- WL 7.2
 Total Depth 3786 Chlorides 900 ppm System LCM 2#
 Blow Description IF - 1" blow built to B.O.B (12 inches) @ 3 1/2 mins.
ISI - S blow back @ 17 mins, stayed @ 5 blow
FF - S blow built to B.O.B (12 inches) @ 4 1/2 mins
FSI - No blow

Rec	Feet of	%gas	%oil	%water	%mud
943	SMS/OCW	4	94	2	
156	MC/HOCW	35	45	20	

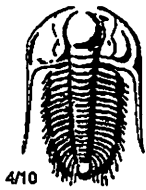
Rec Total 1099 BHT 123 Gravity API RW. 145 @ 47 °F Chlorides 86,000 ppm
 (A) Initial Hydrostatic 1823 Test 1050 T-On Location 03:45
 (B) First Initial Flow 48 Jars _____ T-Started 04:14
 (C) First Final Flow 251 Safety Joint _____ T-Open 05:54
 (D) Initial Shut-In 1178 Circ Sub _____ T-Pulled 08:09
 (E) Second Initial Flow 254 Hourly Standby _____ T-Out 10:44
 (F) Second Final Flow 515 Mileage 94 RT 94 Comments _____
 (G) Final Shut-In 1145 Sampler _____
 (H) Final Hydrostatic 1794 Straddle _____
 Shale Packer _____
 Extra Packer _____
 Extra Recorder _____
 Day Standby _____
 Accessibility _____
 Sub Total 1144

Ruined Shale Packer _____
 Ruined Packer _____
 Extra Copies _____
 Sub Total 0
 Total 1144
 MP/DST Disc't _____

Approved By Richard Bell

Our Representative

Richard Bell



TRILOBITE TESTING INC.

1515 Commerce Parkway • Hays, Kansas 67601

Test Ticket

NO. 63170

Well Name & No. Pratt A #2-35 Test No. 3 Date 03-27-18
 Company RL Investment LLC Elevation 2828 KB 2822 GL
 Address 2698 J O Terrace Hill City, KS 67647
 Co. Rep / Geo. Richard Bell Rig STP #1
 Location: Sec. 35 Twp. 8S Rge. 29W. Co. Sheridan State KS

Interval Tested 3805-3836 Zone Tested L^e Compton
 Anchor Length 31' Drill Pipe Run 3697 Mud Wt. 8.9
 Top Packer Depth 3800 Drill Collars Run 121 Vis 76
 Bottom Packer Depth 3805 Wt. Pipe Run — WL 8.0
 Total Depth 3836 Chlorides 8,400 ppm System LCM 2#

Blow Description IF - 1" blow built to B.O.B (12 inches) @ 4 1/2 mins
ISI - No blow
FF - S. blow built to B.O.B (12 inches) @ 8 1/2 mins.
FSI - S. blow back @ 33 mins.

Rec	Feet of	%gas	%oil	%water	%mud
<u>373</u>	<u>SOS/MSW</u>	<u>1</u>	<u>97</u>	<u>2</u>	
<u>562</u>	<u>GOSMCW</u>	<u>3</u>	<u>74</u>	<u>16</u>	
<u>5</u>	<u>CGO</u>	<u>2</u>	<u>98</u>		

Rec Total 940 BHT 125 Gravity API RW .188 @ 29.8 °F Chlorides 105,000 ppm

- (A) Initial Hydrostatic 1823
- (B) First Initial Flow 59
- (C) First Final Flow 276
- (D) Initial Shut-In 1169
- (E) Second Initial Flow 287
- (F) Second Final Flow 435
- (G) Final Shut-In 1156
- (H) Final Hydrostatic 1860

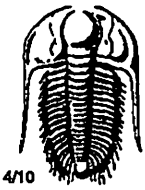
- Test 1050
- Jars
- Safety Joint
- Circ Sub
- Hourly Standby
- Mileage 94RT 94
- Sampler
- Straddle
- Shale Packer
- Extra Packer
- Extra Recorder
- Day Standby
- Accessibility
- Sub Total 1144

T-On Location: 16:40
 T-Started 17:22
 T-Open 19:54
 T-Pulled 22:24
 T-Out 00:53
 Comments _____
 Ruined Shale Packer
 Ruined Packer
 Extra Copies
 Sub Total 0
 Total 1144
 MP/DST Disc't _____

Initial Open 30
 Initial Shut-In 45
 Final Flow 30
 Final Shut-In 45

Approved By Richard Bell

Our Representative Yates Jelinek



TRILOBITE TESTING INC.

1515 Commerce Parkway • Hays, Kansas 67601

Test Ticket

NO. 63171

Well Name & No. Pratt A # 2-35 Test No. 4 Date 03-28-18
 Company RL Investment LLC Elevation 2828 KB 2822 GL
 Address 2698 J O Terrace Hill City, KS 67642
 Co. Rep / Geo. Richard Bell Rlg. STP#1
 Location: Sec. 35 Twp. 8.S. Rge. 29W. Co. Sheridan State KS.

Interval Tested 3841-3873 Zone Tested Orcad
 Anchor Length 32' Drill Pipe Run 3728 Mud Wt. 8.9
 Top Packer Depth 3836 Drill Collars Run 121 Vis 90
 Bottom Packer Depth 3841 Wt. Pipe Run — WL 6.0
 Total Depth 3873 Chlorides 2500 ppm System LCM 2#

Blow Description IF - 1" blow to B.O.B (12 inches) @ 1 1/2 mins.
ISI - S blow back @ 1 1/2 mins. built to 1/4"
FF - S. blow built to B.O.B (12 inches) @ 1 1/2 mins.
FSI - No blow

Rec	Feet of	%gas	%oil	%water	%mud
<u>182</u>	<u>GMSW</u>	<u>4</u>	<u>94</u>	<u>2</u>	<u>—</u>
<u>252</u>	<u>GMCW</u>	<u>2</u>	<u>92</u>	<u>6</u>	<u>—</u>
<u>73</u>	<u>GSS/HMCW</u>	<u>3</u>	<u>62</u>	<u>33</u>	<u>—</u>
Rec	Feet of	%gas	%oil	%water	%mud
Rec	Feet of	%gas	%oil	%water	%mud

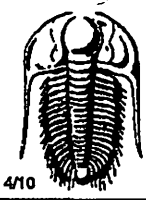
Rec Total 1507 BHT 124 Gravity — API RW 100 @ 66.4 °F Chlorides 9000 ppm
 (A) Initial Hydrostatic 1859 Test 1050 T-On Location 08:30
 (B) First Initial Flow 265 Jars — T-Started 08:53
 (C) First Final Flow 507 Safety Joint — T-Open 10:31
 (D) Initial Shut-In 1233 Circ Sub — T-Pulled 12:31
 (E) Second Initial Flow 536 Hourly Standby — T-Out 15:29
 (F) Second Final Flow 746 Mileage 94RT 94 Comments —
 (G) Final Shut-In 1229 Sampler —
 (H) Final Hydrostatic 1826 Straddle —
 Shale Packer — Ruined Shale Packer —
 Extra Packer — Ruined Packer —
 Extra Recorder — Extra Copies —

Initial Open 15
 Initial Shut-In 45
 Final Flow 15
 Final Shut-In 45

Sub Total 0
 Total 1144
 MP/DST Disc't —

Approved By Richard Bell

Our Representative [Signature]



TRILOBITE TESTING INC.

1515 Commerce Parkway • Hays, Kansas 67601

Test Ticket

NO. 63172

Well Name & No. Pratt A # 2-35 Test No. 5 Date 03-29-18
 Company RL Investment LLC Elevation 2828 KB 2822 GL
 Address 2698 S Terrace Hill City, KS 67642
 Co. Rep / Geo. Richard Bell Rig STP #1
 Location: Sec. 35 Twp. 8S Rge. 29W Co. Shedden State KS

Interval Tested 3982-4008 Zone Tested LKC "E-F"
 Anchor Length 26' Drill Pipe Run 3855 Mud Wt. 8.9
 Top Packer Depth 3977 Drill Collars Run 121 Vis 63
 Bottom Packer Depth 3982 Wt. Pipe Run --- WL 6.0
 Total Depth 4008 Chlorides 2500 ppm System LCM 2H
 Blow Description IF - 1/4" blow built to 8 1/2"
ISI - No blow
FF - S. blow built to 7"
FSI - No blow

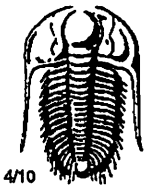
Rec	Feet of	%gas	%oil	%water	%mud
<u>247</u>	<u>MCW</u>		<u>79</u>	<u>21</u>	
Rec	Feet of	%gas	%oil	%water	%mud
Rec	Feet of	%gas	%oil	%water	%mud
Rec	Feet of	%gas	%oil	%water	%mud
Rec	Feet of	%gas	%oil	%water	%mud

Rec Total 247 BHT 123 Gravity --- API RW .168 @ 67.6°F Chlorides 50,000 ppm

(A) Initial Hydrostatic 1989 Test 1150 T-On Location 07:00
 (B) First Initial Flow 18 Jars --- T-Started 07:31
 (C) First Final Flow 84 Safety Joint --- T-Open 09:20
 (D) Initial Shut-In 1177 Circ Sub --- T-Pulled 11:50
 (E) Second Initial Flow 87 Hourly Standby --- T-Out 13:41
 (F) Second Final Flow 120 Mileage 94 RT 94 Comments ---
 (G) Final Shut-In 1175 Sampler ---
 (H) Final Hydrostatic 1956 Straddle ---
 Shale Packer --- Ruined Shale Packer ---
 Extra Packer --- Ruined Packer ---
 Extra Recorder --- Extra Copies ---
 Day Standby --- Sub Total 0
 Accessibility --- Total 1244
 Sub Total 1244 MP/DST Disc't ---

Approved By Richard Bell

Our Representative [Signature]



TRILOBITE TESTING INC.

1515 Commerce Parkway • Hays, Kansas 67601

Test Ticket

NO. 63173

Well Name & No. Pratt A # 2-35 Test No. 6 Date 03-29-18
 Company RL Investment Elevation 2828 KB 2822 GL
 Address 2698 J O Terrace Hill City, KS 67642
 Co. Rep / Geo. Richard Bell Rig STP #1
 Location: Sec. 35 Twp. 8S. Rge. 29W Co. Sheridan State KS

Interval Tested 4038-4064 Zone Tested LKC "H"
 Anchor Length 26' Drill Pipe Run 3919 Mud Wt. 9.2
 Top Packer Depth 4033 Drill Collars Run 121 Vis 60
 Bottom Packer Depth 4038 Wt. Pipe Run --- WL 6.4
 Total Depth 4064 Chlorides 2700 ppm System LCM 2#

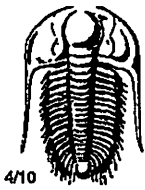
Blow Description IF: 2" Blow built to B.O.B (12 inches) @ 40 secs.
ISI: Blow back @ 30 secs built to B.O.B (12 inches) @ 19 mins.
FE: 1" Blow built to B.O.B (12 inches) @ 1 min
FSI: Blow back @ 1 min built to B.O.B (12 inches) @ 20 1/2 mins

Rec	Feet of	%gas	%oil	%water	%mud
<u>121</u>	<u>HMCW</u>		<u>70</u>	<u>30</u>	
<u>1912 Rev</u>	<u>Feet of 0-25 mins SMC/GHOCW, SMC/G50XW</u>	<u>19/3</u>	<u>37/10</u>	<u>38/79</u>	<u>6/8</u>
<u>273</u>	<u>Feet of SMC/GHWCO</u>	<u>27</u>	<u>41</u>	<u>25</u>	<u>7</u>
<u>10</u>	<u>Feet of CGO</u>	<u>5</u>	<u>95</u>		
<u>0</u>	<u>Feet of 850 GIP</u>				

Rec Total 2316 BHT 128 Gravity 43.7 API RW 203 @ 17.6 °F Chlorides 110,000 ppm

(A) Initial Hydrostatic 2023 Test 1150 T-On Location 22:45
 (B) First Initial Flow 404 Jars _____ T-Started 22:46
 (C) First Final Flow 697 Safety Joint _____ T-Open 00:31
 (D) Initial Shut-In 1167 Circ Sub Drop Bar 50 T-Pulled 02:31
 (E) Second Initial Flow 753 Hourly Standby _____ T-Out 06:42
 (F) Second Final Flow 937 Mileage 94 RT 94 Comments _____
 (G) Final Shut-In 1164 Sampler _____
 (H) Final Hydrostatic 2000 Straddle _____
 Shale Packer _____
 Extra Packer _____
 Extra Recorder _____
 Day Standby _____
 Accessibility _____

Initial Open 15
 Initial Shut-In 45
 Final Flow 15
 Final Shut-In 45
 Sub Total 1294
 Total 1294
 MP/DST Disc't _____
 Approved By Richard Bell Our Representative [Signature]



TRILOBITE TESTING INC.

1515 Commerce Parkway • Hays, Kansas 67601

Test Ticket

NO. 63174

Well Name & No. Pratt A #2-35 Test No. 7 Date 03-30-18
 Company RL Investment LLC Elevation 2828 KB 7822 GL
 Address 2698 J O Terrace Hill City, KS 67642
 Co. Rep / Geo. Richard Bell Rig STP #1
 Location: Sec. 35 Twp. 8 S. Rge. 29 W. Co. Sheridan State KS

Interval Tested 4091 - 4114 Zone Tested LKC "J"
 Anchor Length 23 Drill Pipe Run 3983 Mud Wt. 9.1
 Top Packer Depth 4086 Drill Collars Run 121 Vis 67
 Bottom Packer Depth 4091 Wt. Pipe Run --- WL 6.4
 Total Depth 4114 Chlorides 2700 ppm System LCM 2#
 Blow Description IF - Blow built to B.O.B (12 inches) @ 40 sec
ISF - Blow back @ 1 1/2 mins built to 1/4"
FF - Blow built to B.O.B (12 inches) @ 1 min
FSI - No blow

Rec	Feet of	%gas	%oil	%water	%mud
<u>121</u>	<u>OS/MCW</u>	<u>3</u>	<u>57</u>	<u>40</u>	<u>---</u>
<u>2889 Rev</u>	<u>MS/GHWCO</u>	<u>6</u>	<u>55</u>	<u>35</u>	<u>4</u>
<u>378</u>	<u>MS/GWCO</u>	<u>21</u>	<u>54</u>	<u>20</u>	<u>5</u>
Rec	Feet of	%gas	%oil	%water	%mud
Rec	Feet of	%gas	%oil	%water	%mud

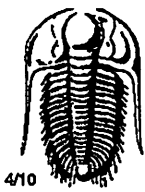
Rec Total 2788 BHT 128 Gravity 42.2 API RW .125 @ 57 °F Chlorides 80,000 ppm

(A) Initial Hydrostatic 2074 Test 1150 T-On Location 14:00
 (B) First Initial Flow 502 Jars _____ T-Started 14:31
 (C) First Final Flow 866 Safety Joint _____ T-Open 16:19
 (D) Initial Shut-In 1301 Circ Sub Drop B.C.F 50 T-Pulled 18:19
 (E) Second Initial Flow 940 Hourly Standby _____ T-Out 23:02
 (F) Second Final Flow 1148 Mileage 94 RT 94 Comments _____
 (G) Final Shut-In 1302 Sampler _____
 (H) Final Hydrostatic 2007 Straddle _____
 Shale Packer _____
 Extra Packer _____
 Extra Recorder _____
 Day Standby _____
 Accessibility _____
 Sub Total 1294

Ruined Shale Packer _____
 Ruined Packer _____
 Extra Copies _____
 Sub Total 0
 Total 1294
 MP/DST Disc't _____

Approved By Richard Bell

Our Representative [Signature]



TRILOBITE TESTING INC.

1515 Commerce Parkway • Hays, Kansas 67601

Test Ticket

NO. 63175

Well Name & No. Pratt A #2-35 Test No. 8 Date 03-31-18
 Company RL Investment Elevation 2828 KB 2822 GL
 Address 2698 J O Terrace Hill City, KS 67642
 Co. Rep / Geo. Richard Bell Rig STP #1
 Location: Sec. 35 Twp. 8S Rge. 29W Co. Sheridan State KS

Interval Tested 4330-4380 Zone Tested Ft Scott
 Anchor Length 50' Drill Pipe Run 4204 Mud Wt. 9.2
 Top Packer Depth 4325 Drill Collars Run 121 Vis 61
 Bottom Packer Depth 4330 Wt. Pipe Run — WL 7.2
 Total Depth 4380 Chlorides 4000 ppm System LCM 2#

Blow Description IF - S. blow built to 1 1/4"
ISI - No blow
FF - No blow
FST - No blow

Rec	Feet of	%gas	%oil	%water	%mud
<u>3</u>	<u>Mud</u>			<u>100</u>	
Rec	Feet of	%gas	%oil	%water	%mud
Rec	Feet of	%gas	%oil	%water	%mud
Rec	Feet of	%gas	%oil	%water	%mud
Rec	Feet of	%gas	%oil	%water	%mud

Rec Total 3 BHT 122 Gravity _____ API RW _____ @ _____ °F Chlorides _____ ppm

- (A) Initial Hydrostatic 2212
- (B) First Initial Flow 17
- (C) First Final Flow 17
- (D) Initial Shut-In 31
- (E) Second Initial Flow 17
- (F) Second Final Flow 18
- (G) Final Shut-In 26
- (H) Final Hydrostatic 2182

- Test 1150
- Jars _____
- Safety Joint _____
- Circ Sub _____
- Hourly Standby _____
- Mileage 94RTK 2 188
- Sampler _____
- Straddle _____
- Shale Packer _____
- Extra Packer _____
- Extra Recorder _____
- Day Standby _____
- Accessibility _____
- Sub Total 1338

T-On Location 19:50
 T-Started 20:23
 T-Open 22:36
 T-Pulled 01:06
 T-Out 02:57
 Comments Loaded Tools @ 16:00
04/02/18
 Ruined Shale Packer _____
 Ruined Packer _____
 Extra Copies _____
 Sub Total 0
 Total 1338
 MP/DST Disc't _____

Initial Open 30
 Initial Shut-In 45
 Final Flow 30
 Final Shut-In 45

Approved By Richard Bell

Our Representative [Signature]