



**TRILOBITE
TESTING, INC.**

DRILL STEM TEST REPORT

Great Plains Energy Inc

29 3s 26w Decatur KS

6121 S 58th ST Ste B
Lincoln NE 68516

Votapka A 1

Job Ticket: 64512

DST#: 2

ATTN: Rich Bell

Test Start: 2018.03.06 @ 18:53:00

GENERAL INFORMATION:

Formation: **LKC " H "**

Deviated: No Whipstock: ft (KB)

Time Tool Opened: 21:03:46

Time Test Ended: 01:46:00

Test Type: Conventional Bottom Hole (Reset)

Tester: Jim Svaty

Unit No: 76

Interval: 3682.00 ft (KB) To 3721.00 ft (KB) (TVD)

Reference Elevations: 2588.00 ft (KB)

Total Depth: 3721.00 ft (KB) (TVD)

2583.00 ft (CF)

Hole Diameter: 7.88 inches Hole Condition: Fair

KB to GR/CF: 5.00 ft

Serial #: 8400 Outside

Press@RunDepth: 37.09 psig @ 3688.00 ft (KB)

Capacity: 8000.00 psig

Start Date: 2018.03.06

End Date:

2018.03.07

Last Calib.:

2018.03.07

Start Time: 18:53:01

End Time:

01:45:46

Time On Btm:

2018.03.06 @ 21:03:31

Time Off Btm:

2018.03.07 @ 00:04:16

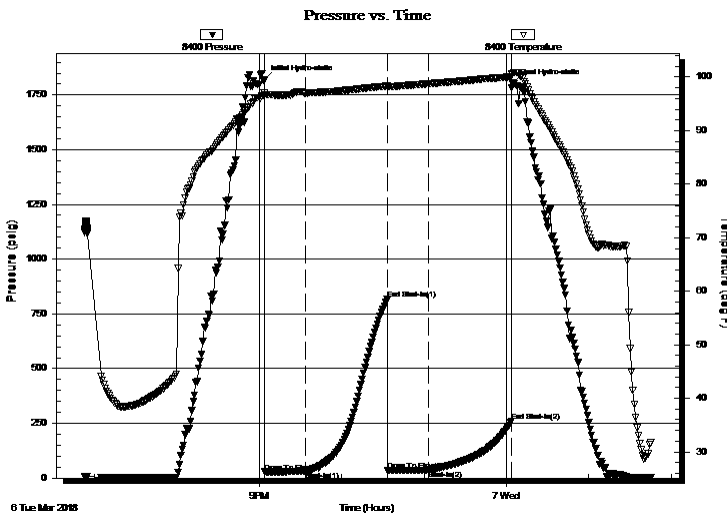
TEST COMMENT: 30-IFP- Surface Blow Building to 1/2in. Died Back in 12 min.

60-ISIP- No Blow

30-FFP- Surface Blow Died Back in 9min.

60-FSIP- No Blow

PRESSURE SUMMARY



Time (Min.)	Pressure (psig)	Temp (deg F)	Annotation
0	1817.96	97.00	Initial Hydro-static
1	28.08	96.59	Open To Flow (1)
30	31.09	96.92	Shut-In(1)
90	816.18	98.32	End Shut-In(1)
90	36.42	98.11	Open To Flow (2)
120	37.09	98.75	Shut-In(2)
181	258.60	100.05	End Shut-In(2)
181	1803.31	100.46	Final Hydro-static

Recovery

Length (ft)	Description	Volume (bbl)
10.00	OCM 25%o 75%m	0.05

Gas Rates

Choke (inches)	Pressure (psig)	Gas Rate (Mcf/d)

* Recovery from multiple tests



**TRILOBITE
TESTING, INC.**

DRILL STEM TEST REPORT

FLUID SUMMARY

Great Plains Energy Inc

29 3s 26w Decatur KS

6121 S 58th ST Ste B
Lincoln NE 68516

Votapka A 1

Job Ticket: 64512

DST#: 2

ATTN: Rich Bell

Test Start: 2018.03.06 @ 18:53:00

Mud and Cushion Information

Mud Type: Gel Chem

Cushion Type:

Oil API:

deg API

Mud Weight: 9.00 lb/gal

Cushion Length:

ft

Water Salinity:

ppm

Viscosity: 54.00 sec/qt

Cushion Volume:

bbf

Water Loss: 6.40 in³

Gas Cushion Type:

Resistivity: ohm.m

Gas Cushion Pressure:

psig

Salinity: 2000.00 ppm

Filter Cake: 2.00 inches

Recovery Information

Recovery Table

Length ft	Description	Volume bbf
10.00	OCM 25%o 75%m	0.049

Total Length: 10.00 ft Total Volume: 0.049 bbf

Num Fluid Samples: 0

Num Gas Bombs: 0

Serial #:

Laboratory Name:

Laboratory Location:

Recovery Comments:

