



**TRILOBITE
TESTING, INC.**

DRILL STEM TEST REPORT

Dixon Operating Co

9-23S-12W Stafford

8100 E 22nd St N
Bldg 300 Ste 200
Wichita, KS 67226
ATTN: Bruce Reed

Salem 1-9

Job Ticket: 63982

DST#: 1

Test Start: 2018.07.10 @ 08:30:07

GENERAL INFORMATION:

Formation: **LKC "A-F"**

Deviated: No Whipstock: ft (KB)

Time Tool Opened: 10:59:24

Time Test Ended: 14:58:09

Test Type: Conventional Bottom Hole (Initial)

Tester: Leal Cason

Unit No: 74

Interval: 3354.00 ft (KB) To 3426.00 ft (KB) (TVD)

Reference Elevations: 1862.00 ft (KB)

Total Depth: 3426.00 ft (KB) (TVD)

1853.00 ft (CF)

Hole Diameter: 7.88 inches Hole Condition: Good

KB to GR/CF: 9.00 ft

Serial #: 8875

Inside

Press@RunDepth: 98.02 psig @ 3355.00 ft (KB)

Capacity: psig

Start Date: 2018.07.10

End Date:

2018.07.10

Last Calib.:

2018.07.10

Start Time: 08:30:08

End Time:

14:58:09

Time On Btm:

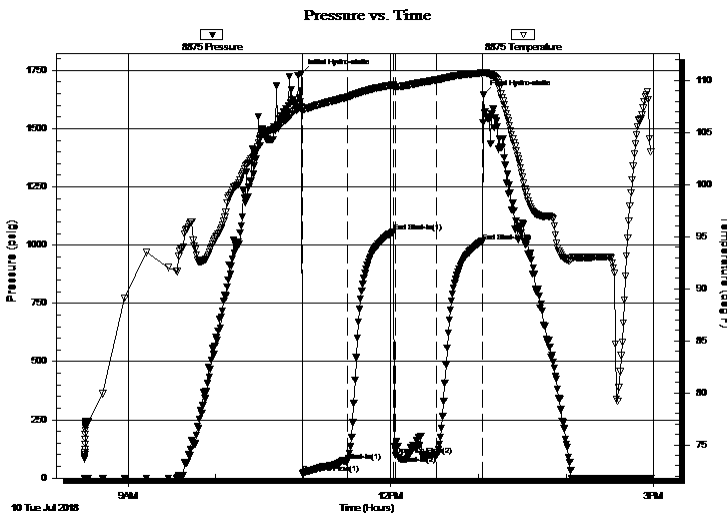
2018.07.10 @ 10:58:39

Time Off Btm:

2018.07.10 @ 13:03:24

TEST COMMENT: IF: Weak Blow , Built to 1.75 inch
IS: No Blow Back
FF: Weak Blow , Built to 1.5 inch
FS: No Blow Back

PRESSURE SUMMARY



Time (Min.)	Pressure (psig)	Temp (deg F)	Annotation
0	1737.22	107.53	Initial Hydro-static
1	19.65	107.05	Open To Flow (1)
32	74.11	108.42	Shut-In(1)
64	1058.37	109.55	End Shut-In(1)
65	97.89	109.44	Open To Flow (2)
93	98.02	110.06	Shut-In(2)
124	1015.95	110.75	End Shut-In(2)
125	1644.32	110.79	Final Hydro-static

Recovery

Length (ft)	Description	Volume (bbl)
125.00	Mud	0.61

Gas Rates

Choke (inches)	Pressure (psig)	Gas Rate (Mcf/d)



**TRILOBITE
TESTING, INC.**

DRILL STEM TEST REPORT

Dixon Operating Co
8100 E 22nd St N
Bldg 300 Ste 200
Wichita, KS 67226
ATTN: Bruce Reed

9-23S-12W Stafford

Salem 1-9

Job Ticket: 63982

DST#: 1

Test Start: 2018.07.10 @ 08:30:07

GENERAL INFORMATION:

Formation: **LKC "A-F"**

Deviated: No Whipstock: ft (KB)

Time Tool Opened: 10:59:24

Time Test Ended: 14:58:09

Test Type: Conventional Bottom Hole (Initial)

Tester: Leal Cason

Unit No: 74

Interval: 3354.00 ft (KB) To 3426.00 ft (KB) (TVD)

Reference Elevations: 1862.00 ft (KB)

Total Depth: 3426.00 ft (KB) (TVD)

1853.00 ft (CF)

Hole Diameter: 7.88 inches Hole Condition: Good

KB to GR/CF: 9.00 ft

Serial #: 6749 Outside

Press@RunDepth: psig @ 3355.00 ft (KB)

Capacity: psig

Start Date: 2018.07.10 End Date: 2018.07.10

Last Calib.: 2018.07.10

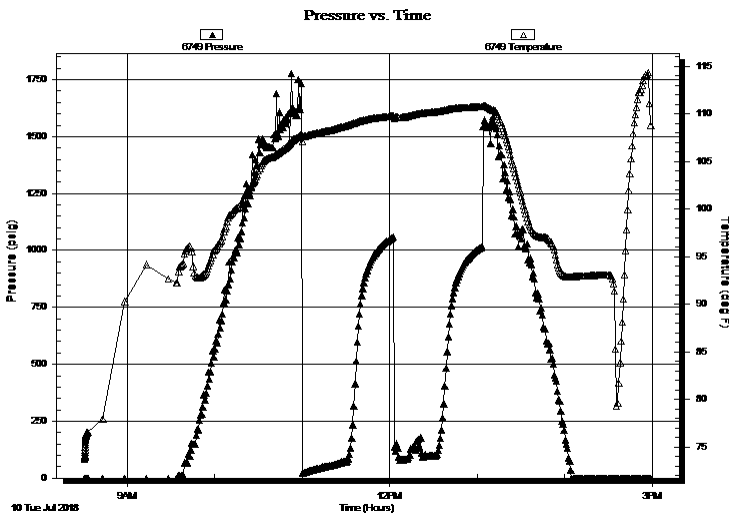
Start Time: 08:31:00 End Time: 14:59:01

Time On Btm:

Time Off Btm:

TEST COMMENT: IF: Weak Blow , Built to 1.75 inch
IS: No Blow Back
FF: Weak Blow , Built to 1.5 inch
FS: No Blow Back

PRESSURE SUMMARY



Time (Min.)	Pressure (psig)	Temp (deg F)	Annotation

Recovery

Length (ft)	Description	Volume (bbl)
125.00	Mud	0.61

Gas Rates

Choke (inches)	Pressure (psig)	Gas Rate (Mcf/d)



**TRILOBITE
TESTING, INC.**

DRILL STEM TEST REPORT

FLUID SUMMARY

Dixon Operating Co
8100 E 22nd St N
Bldg 300 Ste 200
Wichita, KS 67226
ATTN: Bruce Reed

9-23S-12W Stafford

Salem 1-9

Job Ticket: 63982

DST#: 1

Test Start: 2018.07.10 @ 08:30:07

Mud and Cushion Information

Mud Type: Gel Chem
Mud Weight: 9.00 lb/gal
Viscosity: 59.00 sec/qt
Water Loss: 7.20 in³
Resistivity: ohm.m
Salinity: 3200.00 ppm
Filter Cake: 0.02 inches

Cushion Type:
Cushion Length: ft
Cushion Volume: bbl
Gas Cushion Type:
Gas Cushion Pressure: psig

Oil API: deg API
Water Salinity: ppm

Recovery Information

Recovery Table

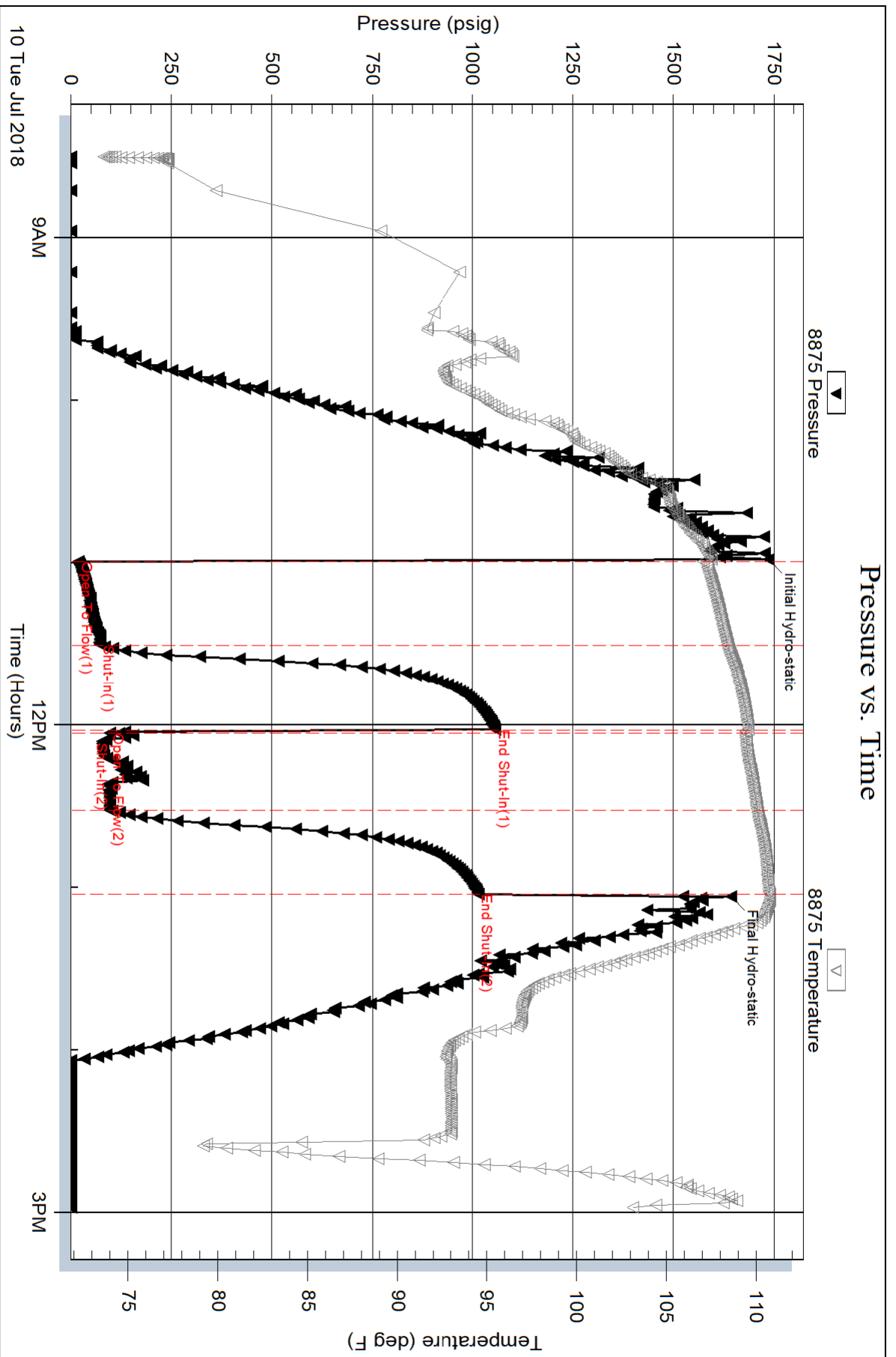
Length ft	Description	Volume bbl
125.00	Mud	0.615

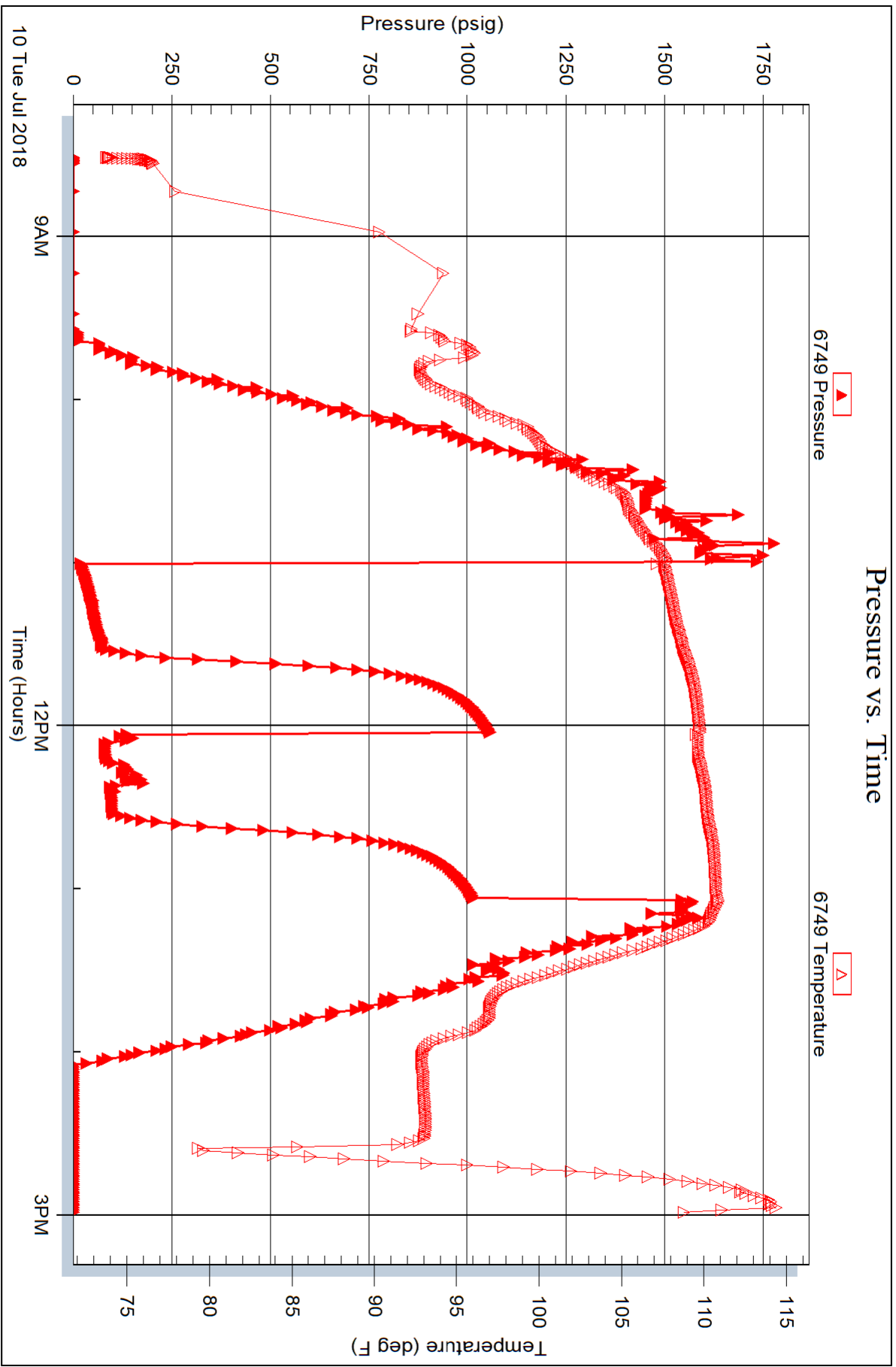
Total Length: 125.00 ft Total Volume: 0.615 bbl

Num Fluid Samples: 0 Num Gas Bombs: 0 Serial #:

Laboratory Name: Laboratory Location:

Recovery Comments:







TRILOBITE TESTING, INC.

DRILL STEM TEST REPORT

Dixon Operating Co
 8100 E 22nd St N
 Bldg 300 Ste 200
 Wichita, KS 67226
 ATTN: Bruce Reed

9-23S-12W Stafford

Salem 1-9

Job Ticket: 63983

DST#: 2

Test Start: 2018.07.11 @ 02:04:07

GENERAL INFORMATION:

Formation: **LKC "H,I,J"**
 Deviated: No Whipstock: ft (KB)
 Time Tool Opened: 04:14:09
 Time Test Ended: 10:10:09
 Interval: **3466.00 ft (KB) To 3526.00 ft (KB) (TVD)**
 Total Depth: 3526.00 ft (KB) (TVD)
 Hole Diameter: 7.88 inches Hole Condition: Good
 Test Type: Conventional Bottom Hole (Reset)
 Tester: Leal Cason
 Unit No: 74
 Reference Elevations: 1862.00 ft (KB)
 1853.00 ft (CF)
 KB to GR/CF: 9.00 ft

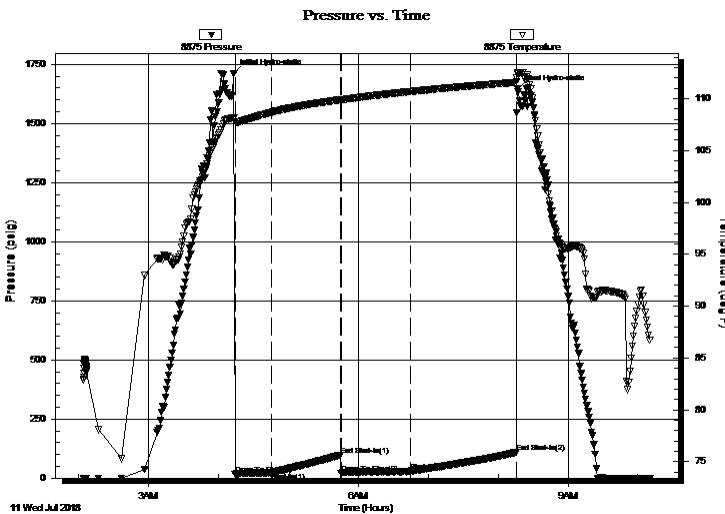
Serial #: 8875

Inside

Press@RunDepth: 29.72 psig @ 3467.00 ft (KB) Capacity: psig
 Start Date: 2018.07.11 End Date: 2018.07.11 Last Calib.: 2018.07.11
 Start Time: 02:04:08 End Time: 10:10:09 Time On Btm: 2018.07.11 @ 04:13:09
 Time Off Btm: 2018.07.11 @ 08:16:39

TEST COMMENT: IF: Weak Blow , Built to 3.5 inches
 IS: No Blow Back
 FF: Weak Blow , Built to 2.5 inches
 FS: No Blow Back

PRESSURE SUMMARY



Time (Min.)	Pressure (psig)	Temp (deg F)	Annotation
0	1711.06	108.19	Initial Hydro-static
1	16.44	107.77	Open To Flow (1)
32	23.64	108.66	Shut-In(1)
92	97.84	109.88	End Shut-In(1)
92	21.39	109.88	Open To Flow (2)
152	29.72	110.68	Shut-In(2)
243	109.79	111.61	End Shut-In(2)
244	1645.09	112.39	Final Hydro-static

Recovery

Length (ft)	Description	Volume (bbl)
20.00	SOGCM 2%G 1%O 97%M	0.10

* Recovery from multiple tests

Gas Rates

Choke (inches)	Pressure (psig)	Gas Rate (Mcf/d)



**TRILOBITE
TESTING, INC.**

DRILL STEM TEST REPORT

Dixon Operating Co
8100 E 22nd St N
Bldg 300 Ste 200
Wichita, KS 67226
ATTN: Bruce Reed

9-23S-12W Stafford

Salem 1-9

Job Ticket: 63983

DST#: 2

Test Start: 2018.07.11 @ 02:04:07

GENERAL INFORMATION:

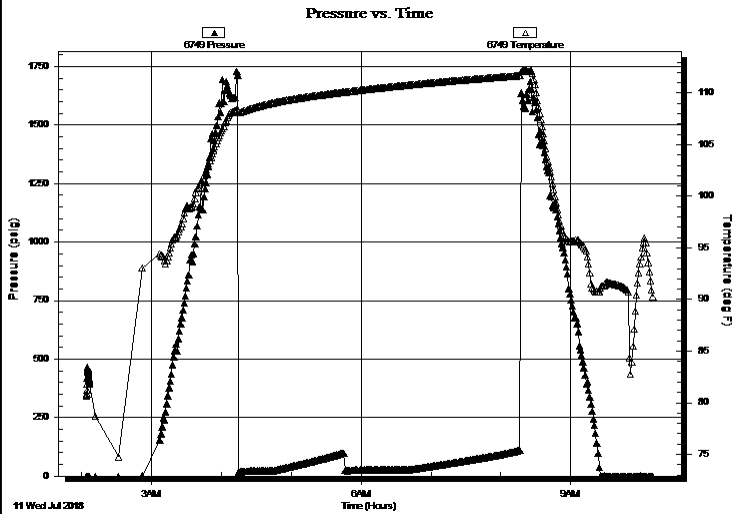
Formation: LKC "H,I,J"		
Deviated: No Whipstock:	ft (KB)	Test Type: Conventional Bottom Hole (Reset)
Time Tool Opened: 04:14:09		Tester: Leal Cason
Time Test Ended: 10:10:09		Unit No: 74
Interval: 3466.00 ft (KB) To 3526.00 ft (KB) (TVD)		Reference Elevations: 1862.00 ft (KB)
Total Depth: 3526.00 ft (KB) (TVD)		1853.00 ft (CF)
Hole Diameter: 7.88 inches	Hole Condition: Good	KB to GR/CF: 9.00 ft

Serial #: 6749

Outside

Press@RunDepth: _____ psig @ 3467.00 ft (KB)	Capacity: _____ psig	
Start Date: 2018.07.11	End Date: 2018.07.11	Last Calib.: 2018.07.11
Start Time: 02:04:31	End Time: 10:10:32	Time On Btm: _____
		Time Off Btm: _____

TEST COMMENT: IF: Weak Blow , Built to 3.5 inches
IS: No Blow Back
FF: Weak Blow , Built to 2.5 inches
FS: No Blow Back



PRESSURE SUMMARY

Time (Min.)	Pressure (psig)	Temp (deg F)	Annotation

Recovery

Length (ft)	Description	Volume (bbl)
20.00	SOGCM 2%G 1%O 97%M	0.10

* Recovery from multiple tests

Gas Rates

Choke (inches)	Pressure (psig)	Gas Rate (Mcf/d)



**TRILOBITE
TESTING, INC.**

DRILL STEM TEST REPORT

FLUID SUMMARY

Dixon Operating Co

9-23S-12W Stafford

8100 E 22nd St N
Bldg 300 Ste 200
Wichita, KS 67226
ATTN: Bruce Reed

Salem 1-9

Job Ticket: 63983

DST#: 2

Test Start: 2018.07.11 @ 02:04:07

Mud and Cushion Information

Mud Type: Gel Chem

Cushion Type:

Oil API:

deg API

Mud Weight: 9.00 lb/gal

Cushion Length:

ft

Water Salinity:

ppm

Viscosity: 63.00 sec/qt

Cushion Volume:

bbbl

Water Loss: 8.79 in³

Gas Cushion Type:

Resistivity: ohm.m

Gas Cushion Pressure:

psig

Salinity: 5700.00 ppm

Filter Cake: 0.02 inches

Recovery Information

Recovery Table

Length ft	Description	Volume bbl
20.00	SOGCM 2%G 1%O 97%M	0.098

Total Length: 20.00 ft Total Volume: 0.098 bbl

Num Fluid Samples: 0

Num Gas Bombs: 0

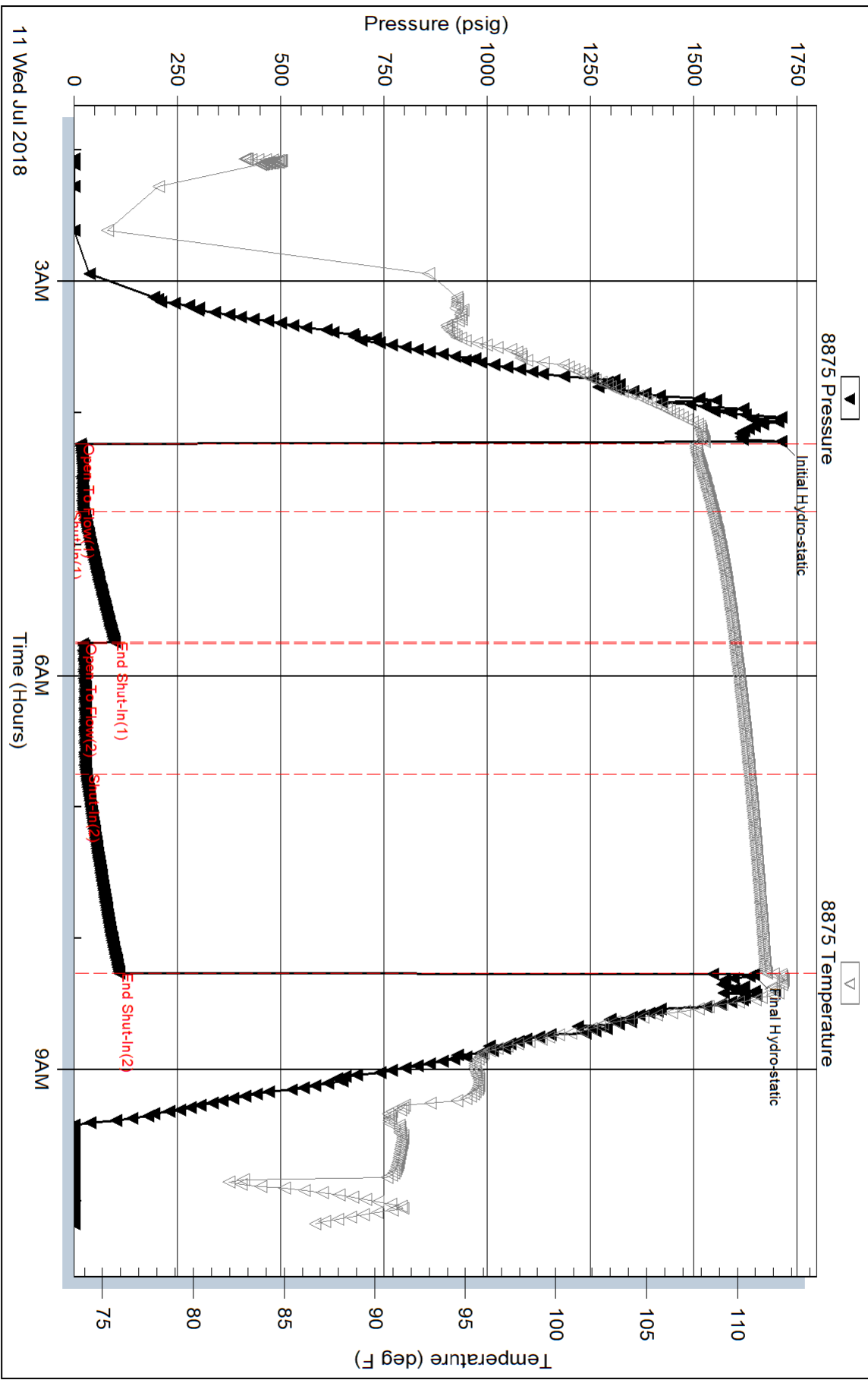
Serial #:

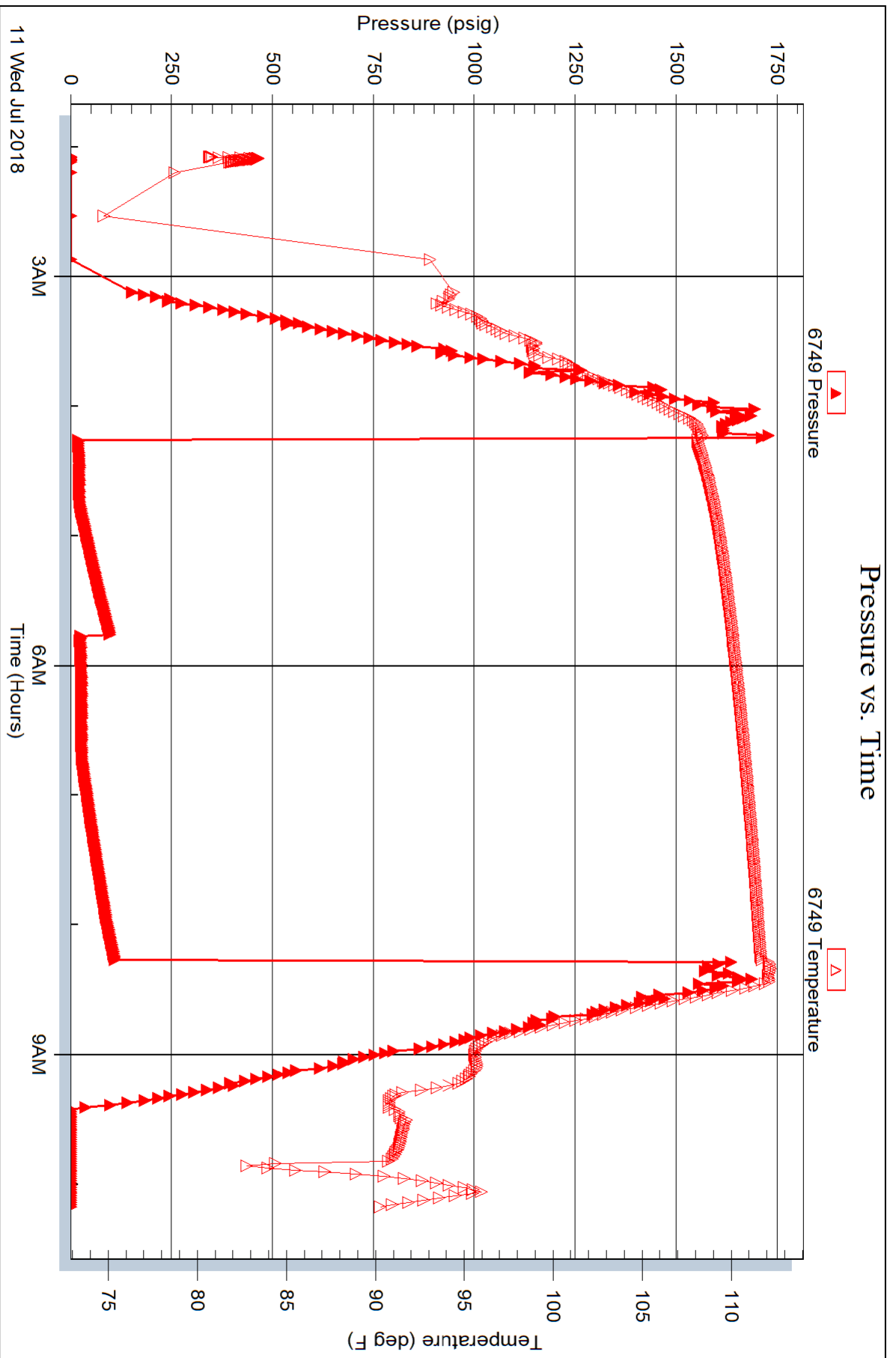
Laboratory Name:

Laboratory Location:

Recovery Comments:

Pressure vs. Time







TRILOBITE TESTING, INC.

DRILL STEM TEST REPORT

Dixon Operating Co
 8100 E 22nd St N
 Bldg 300 Ste 200
 Wichita, KS 67226
 ATTN: Bruce Reed

9-23S-12W Stafford

Salem 1-9

Job Ticket: 63984

DST#: 3

Test Start: 2018.07.11 @ 18:35:13

GENERAL INFORMATION:

Formation: **LKC "K&L"**
 Deviated: No Whipstock: ft (KB)
 Time Tool Opened: 21:06:00
 Time Test Ended: 03:27:15
 Interval: **3526.00 ft (KB) To 3580.00 ft (KB) (TVD)**
 Total Depth: 3580.00 ft (KB) (TVD)
 Hole Diameter: 7.88 inches Hole Condition: Good
 Test Type: Conventional Bottom Hole (Reset)
 Tester: Leal Cason
 Unit No: 74
 Reference Elevations: 1862.00 ft (KB)
 1853.00 ft (CF)
 KB to GR/CF: 9.00 ft

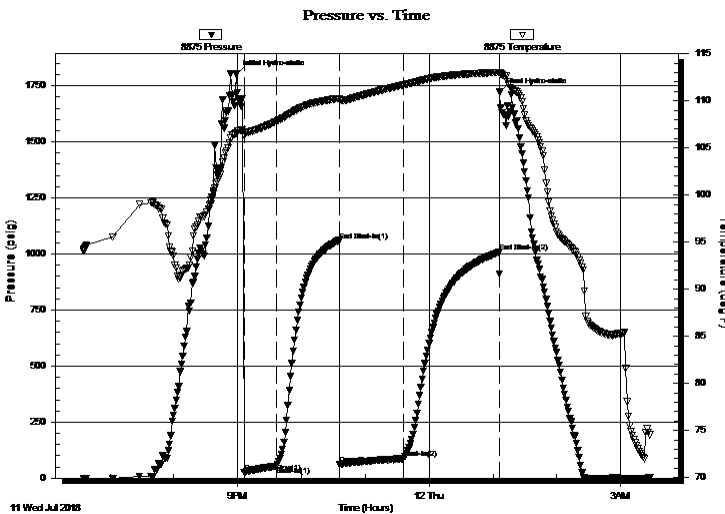
Serial #: 8875

Inside

Press@RunDepth: 89.31 psig @ 3527.00 ft (KB) Capacity: psig
 Start Date: 2018.07.11 End Date: 2018.07.12 Last Calib.: 2018.07.12
 Start Time: 18:35:14 End Time: 03:27:15 Time On Btm: 2018.07.11 @ 20:58:30
 Time Off Btm: 2018.07.12 @ 01:06:30

TEST COMMENT: IF: Weak Blow , Built to 2.5 inches
 IS: No Blow Back
 FF: Weak Blow , Built to 2.75 inches
 FS: No Blow Back

PRESSURE SUMMARY



Time (Min.)	Pressure (psig)	Temp (deg F)	Annotation
0	1801.47	106.56	Initial Hydro-static
8	24.34	106.35	Open To Flow (1)
38	53.56	107.81	Shut-In(1)
97	1060.12	110.22	End Shut-In(1)
98	62.32	110.07	Open To Flow (2)
158	89.31	111.69	Shut-In(2)
248	1007.57	113.01	End Shut-In(2)
248	1721.26	113.01	Final Hydro-static

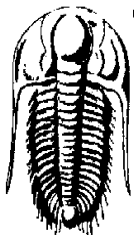
Recovery

Length (ft)	Description	Volume (bbl)
120.00	MCW 12%M 88%W	0.59
20.00	SOCM 5%O 95%M	0.10

* Recovery from multiple tests

Gas Rates

Choke (inches)	Pressure (psig)	Gas Rate (Mcf/d)



**TRILOBITE
TESTING, INC.**

DRILL STEM TEST REPORT

Dixon Operating Co

9-23S-12W Stafford

8100 E 22nd St N
Bldg 300 Ste 200
Wichita, KS 67226
ATTN: Bruce Reed

Salem 1-9

Job Ticket: 63984

DST#: 3

Test Start: 2018.07.11 @ 18:35:13

GENERAL INFORMATION:

Formation: **LKC "K&L"**

Deviated: No Whipstock: ft (KB)

Time Tool Opened: 21:06:00

Time Test Ended: 03:27:15

Test Type: Conventional Bottom Hole (Reset)

Tester: Leal Cason

Unit No: 74

Interval: 3526.00 ft (KB) To 3580.00 ft (KB) (TVD)

Total Depth: 3580.00 ft (KB) (TVD)

Hole Diameter: 7.88 inches Hole Condition: Good

Reference Elevations: 1862.00 ft (KB)

1853.00 ft (CF)

KB to GR/CF: 9.00 ft

Serial #: 6749

Outside

Press@RunDepth: psig @ 3527.00 ft (KB)

Start Date: 2018.07.11

End Date:

2018.07.12

Capacity: psig

Last Calib.:

2018.07.12

Start Time: 18:35:27

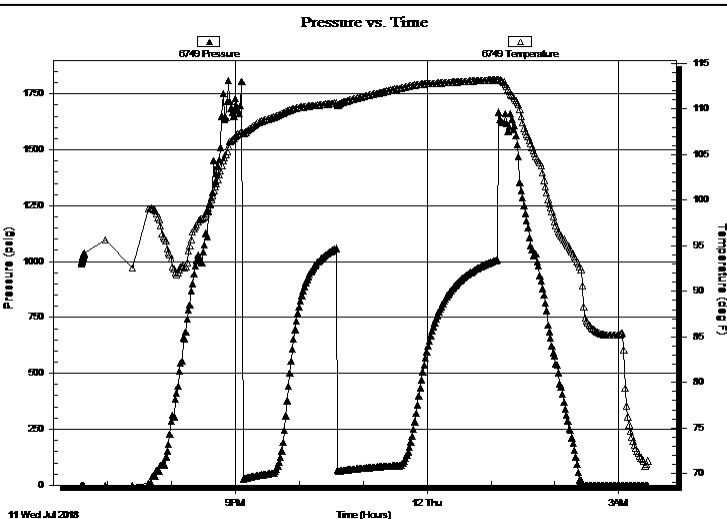
End Time:

03:27:28

Time On Btm:

Time Off Btm:

TEST COMMENT: IF: Weak Blow, Built to 2.5 inches
IS: No Blow Back
FF: Weak Blow, Built to 2.75 inches
FS: No Blow Back



PRESSURE SUMMARY

Time (Min.)	Pressure (psig)	Temp (deg F)	Annotation

Recovery

Length (ft)	Description	Volume (bbl)
120.00	MCW 12%M 88%W	0.59
20.00	SOCM 5%O 95%M	0.10

Gas Rates

	Choke (inches)	Pressure (psig)	Gas Rate (Mcf/d)

* Recovery from multiple tests



TRILOBITE
TESTING, INC.

DRILL STEM TEST REPORT

FLUID SUMMARY

Dixon Operating Co

9-23S-12W Stafford

8100 E 22nd St N
Bldg 300 Ste 200
Wichita, KS 67226
ATTN: Bruce Reed

Salem 1-9

Job Ticket: 63984

DST#: 3

Test Start: 2018.07.11 @ 18:35:13

Mud and Cushion Information

Mud Type: Gel Chem

Cushion Type:

Oil API:

deg API

Mud Weight: 9.00 lb/gal

Cushion Length:

ft

Water Salinity:

68000 ppm

Viscosity: 82.00 sec/qt

Cushion Volume:

bbbl

Water Loss: 14.59 in³

Gas Cushion Type:

Resistivity: ohm.m

Gas Cushion Pressure:

psig

Salinity: 12300.00 ppm

Filter Cake: 0.02 inches

Recovery Information

Recovery Table

Length ft	Description	Volume bbbl
120.00	MCW 12%M 88%W	0.590
20.00	SOCM 5%O 95%M	0.098

Total Length: 140.00 ft Total Volume: 0.688 bbl

Num Fluid Samples: 0

Num Gas Bombs: 0

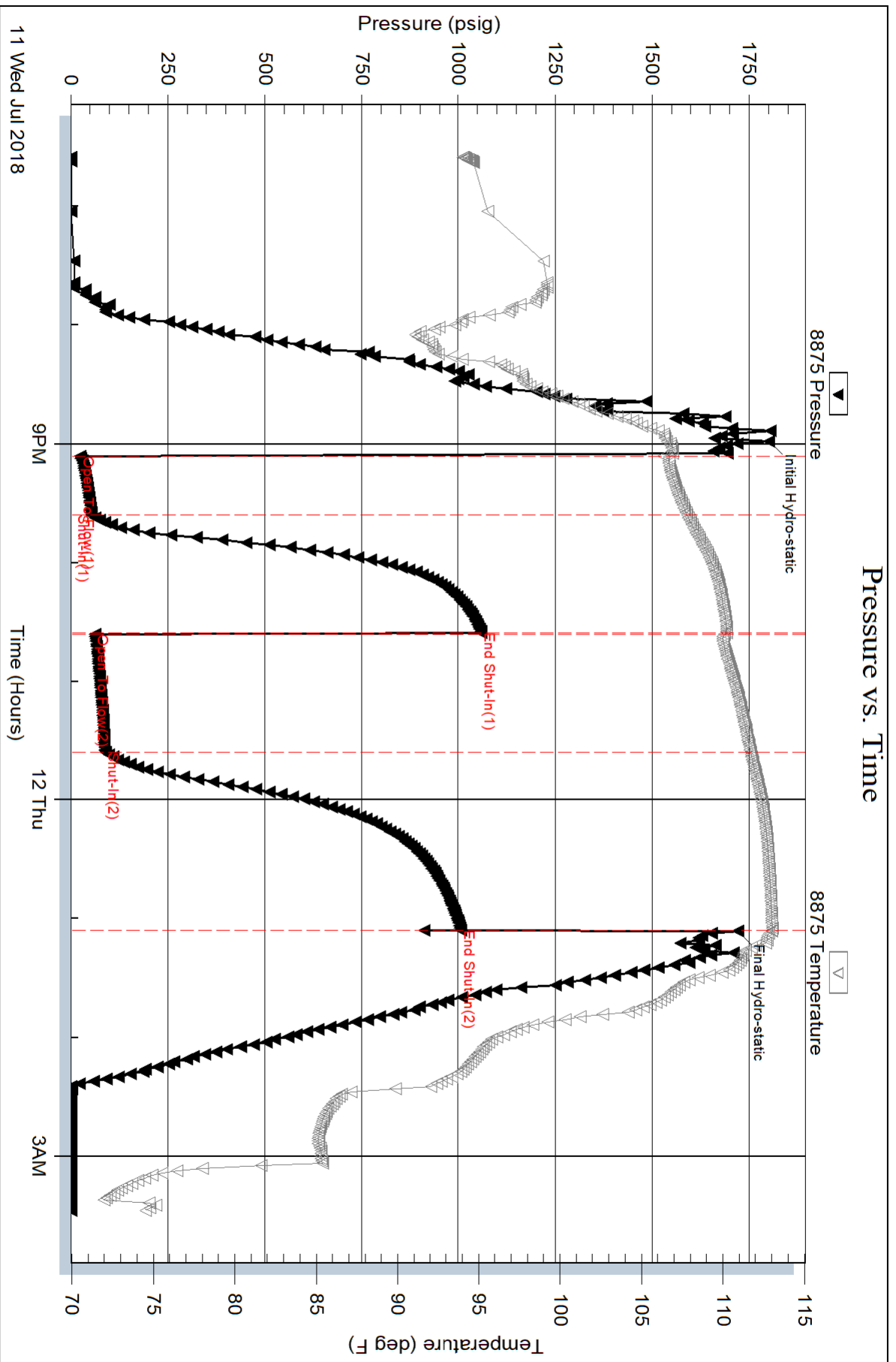
Serial #:

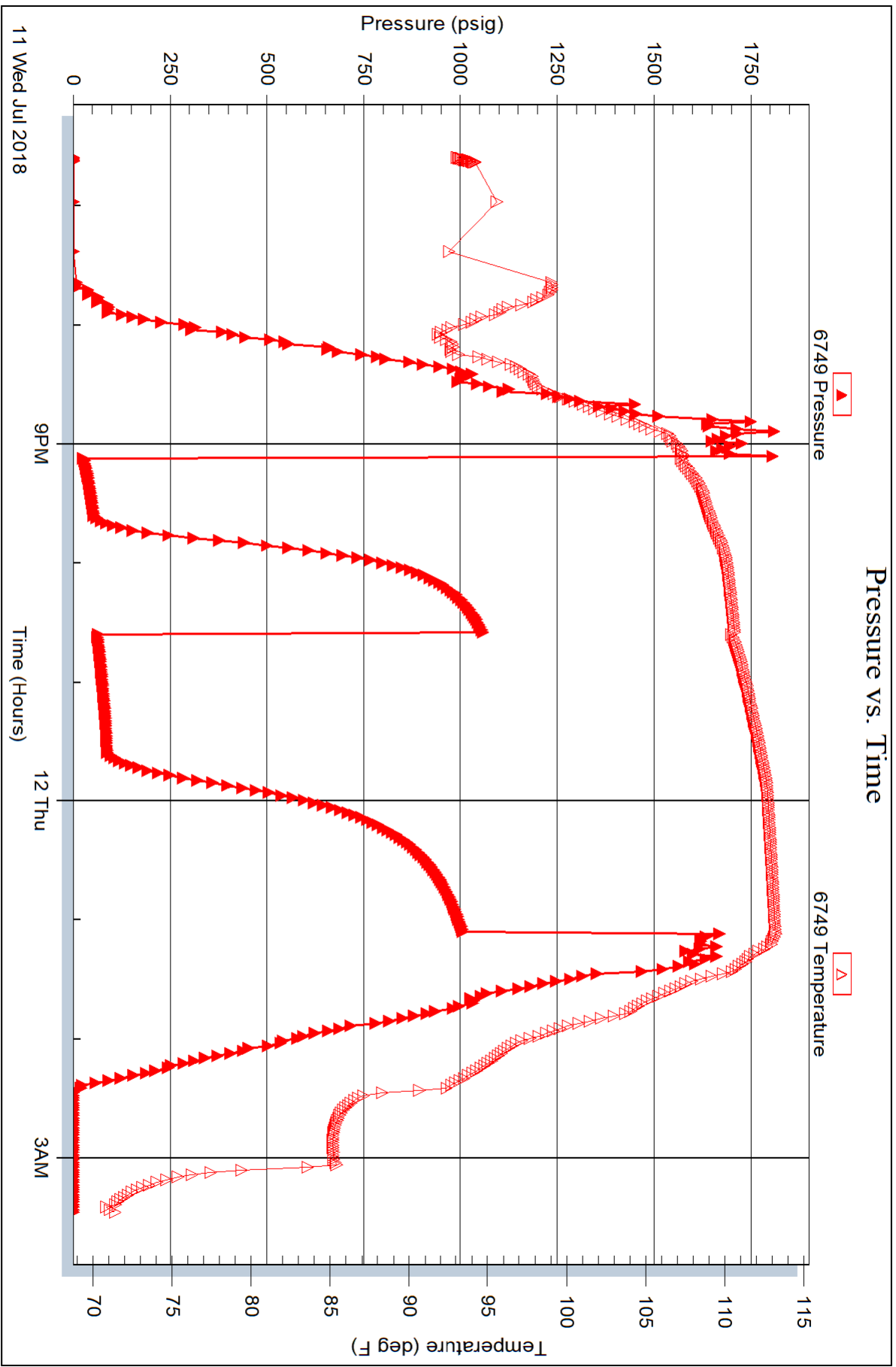
Laboratory Name:

Laboratory Location:

Recovery Comments: RW w as .1 @ 80 degrees

Pressure vs. Time







TRILOBITE TESTING, INC.

DRILL STEM TEST REPORT

Dixon Operating Co

9-23S-12W Stafford

8100 E 22nd St N
Bldg 300 Ste 200
Wichita, KS 67226
ATTN: Bruce Reed

Salem 1-9

Job Ticket: 63985

DST#: 4

Test Start: 2018.07.12 @ 17:15:44

GENERAL INFORMATION:

Formation: **Simpson**

Deviated: No Whipstock: ft (KB)

Time Tool Opened: 19:42:46

Time Test Ended: 02:01:46

Test Type: Conventional Bottom Hole (Reset)

Tester: Leal Cason

Unit No: 74

Interval: 3686.00 ft (KB) To 3720.00 ft (KB) (TVD)

Reference Elevations: 1862.00 ft (KB)

Total Depth: 3720.00 ft (KB) (TVD)

1853.00 ft (CF)

Hole Diameter: 7.88 inches Hole Condition: Good

KB to GR/CF: 9.00 ft

Serial #: 8875

Inside

Press@RunDepth: 46.23 psig @ 3687.00 ft (KB)

Capacity: psig

Start Date: 2018.07.12

End Date:

2018.07.13

Last Calib.:

2018.07.13

Start Time: 17:15:45

End Time:

02:01:46

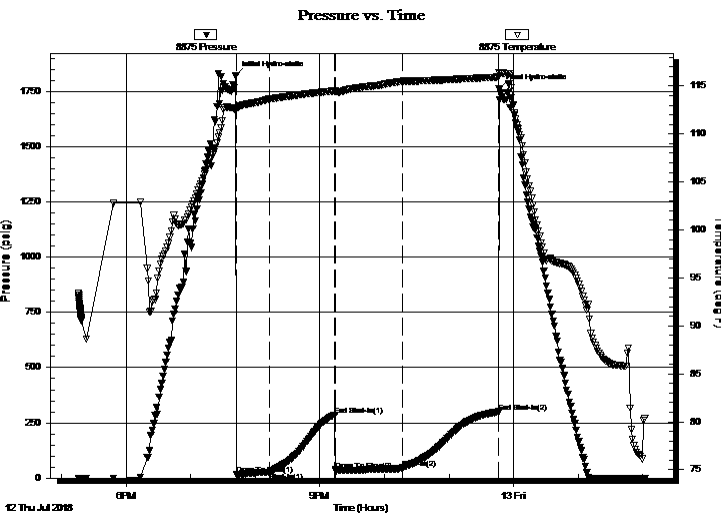
Time On Btm:

2018.07.12 @ 19:41:46

Time Off Btm:

2018.07.12 @ 23:46:31

TEST COMMENT: IF: Weak Blow, Built to 2.75 inches
IS: No Blow Back
FF: Fair Blow, BOB in 58 minutes
FS: No Blow Back



PRESSURE SUMMARY

Time (Min.)	Pressure (psig)	Temp (deg F)	Annotation
0	1820.65	112.63	Initial Hydro-static
1	15.27	112.65	Open To Flow (1)
31	26.30	113.62	Shut-In(1)
92	285.58	114.47	End Shut-In(1)
93	33.74	114.44	Open To Flow (2)
155	46.23	115.48	Shut-In(2)
245	299.92	115.97	End Shut-In(2)
245	1759.89	116.41	Final Hydro-static

Recovery

Length (ft)	Description	Volume (bbl)
0.00	120 GIP	0.00
65.00	GOCM 20%G 20%O 80%M	0.32

* Recovery from multiple tests

Gas Rates

Choke (inches)	Pressure (psig)	Gas Rate (Mcf/d)



TRILOBITE TESTING, INC.

DRILL STEM TEST REPORT

Dixon Operating Co
 8100 E 22nd St N
 Bldg 300 Ste 200
 Wichita, KS 67226
 ATTN: Bruce Reed

9-23S-12W Stafford

Salem 1-9

Job Ticket: 63985

DST#: 4

Test Start: 2018.07.12 @ 17:15:44

GENERAL INFORMATION:

Formation: **Simpson**

Deviated: No Whipstock: ft (KB)

Time Tool Opened: 19:42:46

Time Test Ended: 02:01:46

Interval: 3686.00 ft (KB) To 3720.00 ft (KB) (TVD)

Total Depth: 3720.00 ft (KB) (TVD)

Hole Diameter: 7.88 inches Hole Condition: Good

Test Type: Conventional Bottom Hole (Reset)

Tester: Leal Cason

Unit No: 74

Reference Elevations: 1862.00 ft (KB)

1853.00 ft (CF)

KB to GR/CF: 9.00 ft

Serial #: 6749 Outside

Press@RunDepth: psig @ 3687.00 ft (KB)

Start Date: 2018.07.12

End Date:

2018.07.13

Start Time: 17:15:09

End Time:

02:01:10

Capacity: psig

Last Calib.:

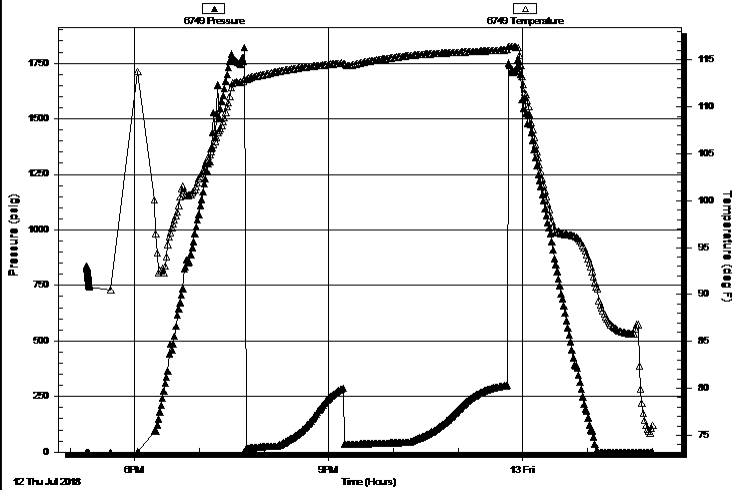
2018.07.13

Time On Btm:

Time Off Btm:

TEST COMMENT: IF: Weak Blow , Built to 2.75 inches
 IS: No Blow Back
 FF: Fair Blow , BOB in 58 minutes
 FS: No Blow Back

Pressure vs. Time



PRESSURE SUMMARY

Time (Min.)	Pressure (psig)	Temp (deg F)	Annotation

Recovery

Length (ft)	Description	Volume (bbl)
0.00	120 GIP	0.00
65.00	GOCM 20%G 20%O 80%M	0.32

Gas Rates

Choke (inches)	Pressure (psig)	Gas Rate (Mcf/d)

* Recovery from multiple tests



**TRILOBITE
TESTING, INC.**

DRILL STEM TEST REPORT

FLUID SUMMARY

Dixon Operating Co
8100 E 22nd St N
Bldg 300 Ste 200
Wichita, KS 67226
ATTN: Bruce Reed

9-23S-12W Stafford
Salem 1-9
Job Ticket: 63985 **DST#: 4**
Test Start: 2018.07.12 @ 17:15:44

Mud and Cushion Information

Mud Type: Gel Chem	Cushion Type:	Oil API:	deg API
Mud Weight: 9.00 lb/gal	Cushion Length: ft	Water Salinity:	ppm
Viscosity: 55.00 sec/qt	Cushion Volume: bbl		
Water Loss: 13.79 in ³	Gas Cushion Type:		
Resistivity: ohm.m	Gas Cushion Pressure: psig		
Salinity: 12800.00 ppm			
Filter Cake: 0.02 inches			

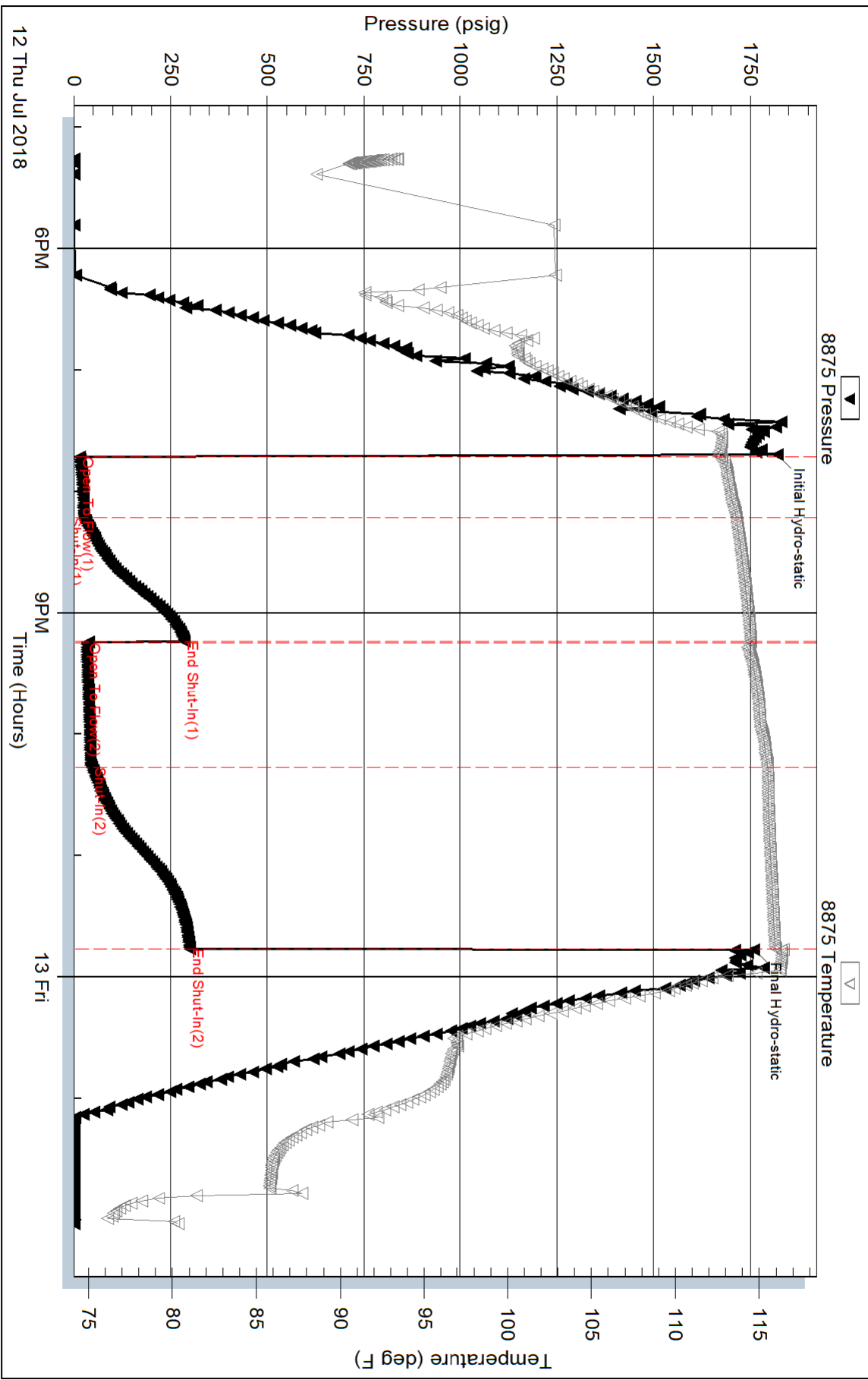
Recovery Information

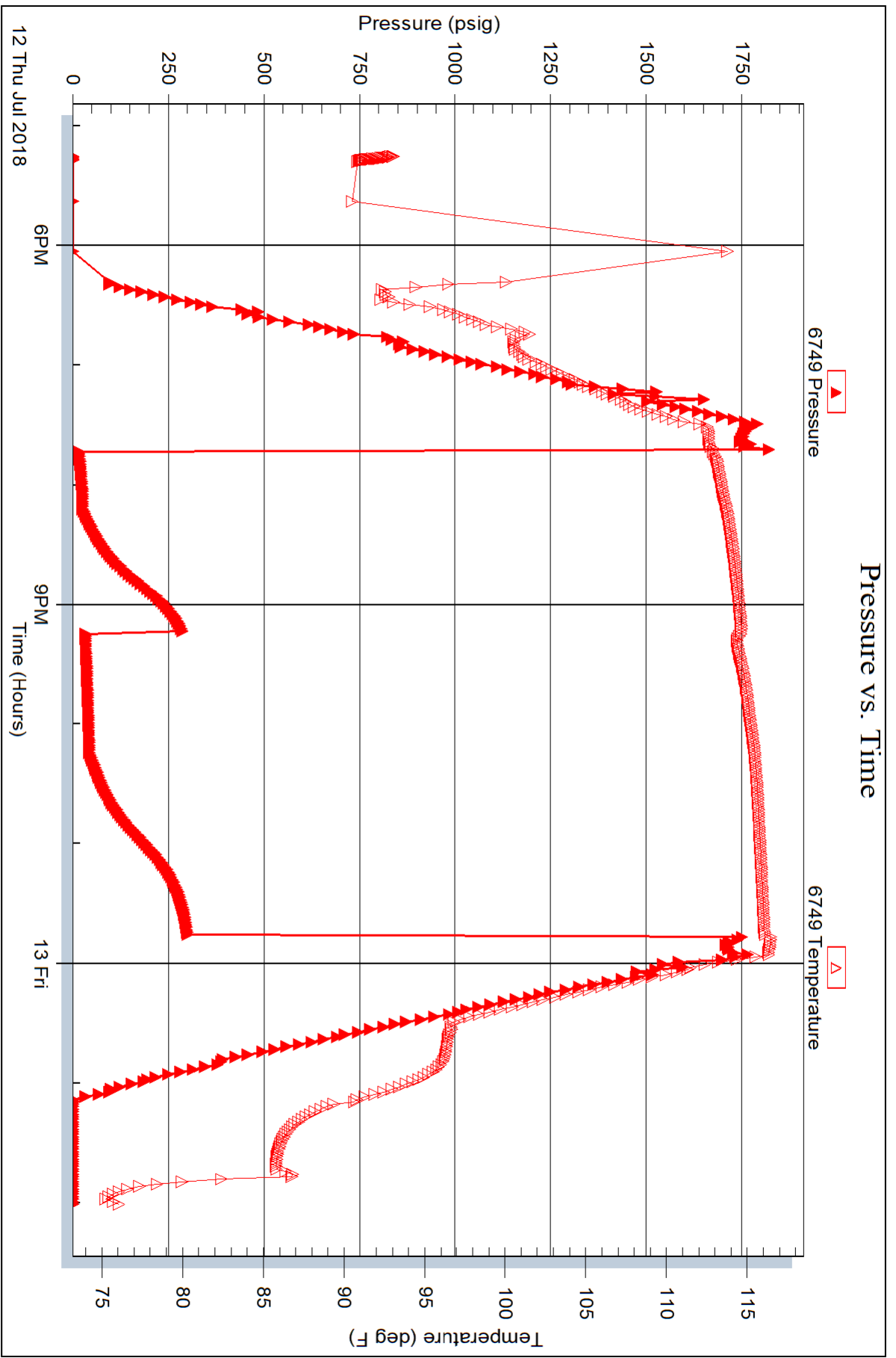
Recovery Table

Length ft	Description	Volume bbl
0.00	120 GIP	0.000
65.00	GOCM 20%G 20%O 80%M	0.320

Total Length: 65.00 ft Total Volume: 0.320 bbl
 Num Fluid Samples: 0 Num Gas Bombs: 0 Serial #:
 Laboratory Name: Laboratory Location:
 Recovery Comments:

Pressure vs. Time







TRILOBITE TESTING, INC.

DRILL STEM TEST REPORT

Dixon Operating Co
 8100 E 22nd St N
 Bldg 300 Ste 200
 Wichita, KS 67226
 ATTN: Bruce Reed

9-23S-12W Stafford

Salem 1-9

Job Ticket: 63986

DST#: 5

Test Start: 2018.07.13 @ 11:21:01

GENERAL INFORMATION:

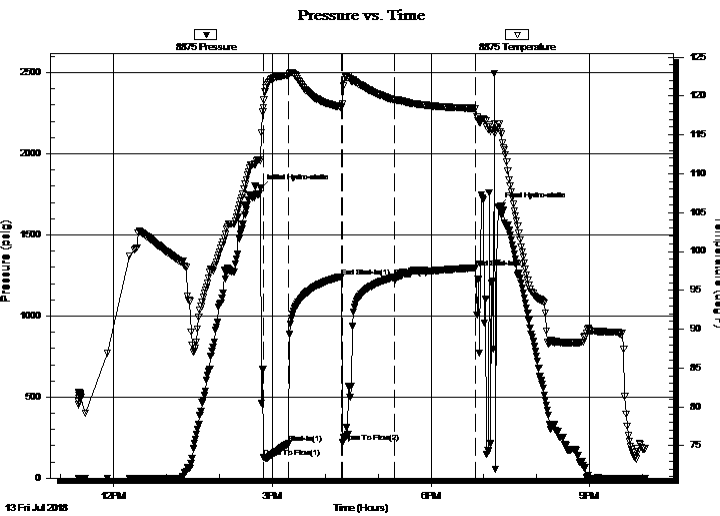
Formation: **Arbuckle**
 Deviated: No Whipstock: ft (KB)
 Time Tool Opened: 14:50:03
 Time Test Ended: 22:02:48
 Interval: **3720.00 ft (KB) To 3741.00 ft (KB) (TVD)**
 Total Depth: 3741.00 ft (KB) (TVD)
 Hole Diameter: 7.88 inches Hole Condition: Good
 Test Type: Conventional Bottom Hole (Reset)
 Tester: Leal Cason
 Unit No: 74
 Reference Elevations: 1862.00 ft (KB)
 1853.00 ft (CF)
 KB to GR/CF: 9.00 ft

Serial #: 8875

Inside

Press@RunDepth: 1239.21 psig @ 3721.00 ft (KB) Capacity: psig
 Start Date: 2018.07.13 End Date: 2018.07.13 Last Calib.: 2018.07.13
 Start Time: 11:21:02 End Time: 22:02:48 Time On Btm: 2018.07.13 @ 14:47:03
 Time Off Btm: 2018.07.13 @ 19:15:48

TEST COMMENT: IF: Strong Blow , BOB in 4 minutes, Built to 89.5 inches
 IS: Blow Back Built to 2 inches
 FF: Strong Blow , BOB in 6 minutes, Built to 31 inches, Died off to 23 inches
 FS: No Blow Back



PRESSURE SUMMARY

Time (Min.)	Pressure (psig)	Temp (deg F)	Annotation
0	1786.51	111.72	Initial Hydro-static
3	129.99	118.52	Open To Flow (1)
32	213.24	122.66	Shut-In(1)
92	1242.43	118.56	End Shut-In(1)
93	218.63	118.95	Open To Flow (2)
152	1239.21	119.45	Shut-In(2)
244	1296.69	118.39	End Shut-In(2)
269	1673.30	116.46	Final Hydro-static

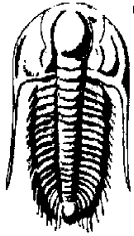
Recovery

Length (ft)	Description	Volume (bbl)
0.00	620 GIP	0.00
182.00	MWCO 10%M 30%W 60%O	1.16
259.00	GMCO 5%G 5%M 90%O	3.63
345.00	GSY Oil 10%G 90%O	4.84

* Recovery from multiple tests

Gas Rates

	Choke (inches)	Pressure (psig)	Gas Rate (Mcf/d)



**TRILOBITE
TESTING, INC.**

DRILL STEM TEST REPORT

Dixon Operating Co

9-23S-12W Stafford

8100 E 22nd St N
Bldg 300 Ste 200
Wichita, KS 67226
ATTN: Bruce Reed

Salem 1-9

Job Ticket: 63986

DST#: 5

Test Start: 2018.07.13 @ 11:21:01

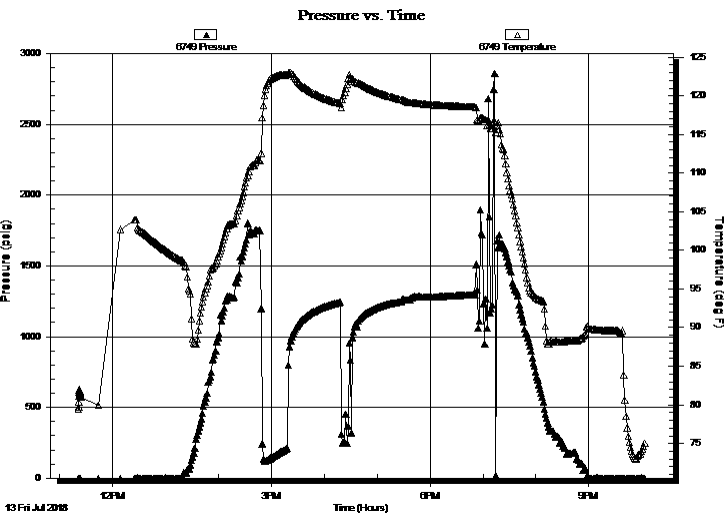
GENERAL INFORMATION:

Formation: **Arbuckle**
 Deviated: No Whipstock: ft (KB) Test Type: Conventional Bottom Hole (Reset)
 Time Tool Opened: 14:50:03 Tester: Leal Cason
 Time Test Ended: 22:02:48 Unit No: 74
 Interval: **3720.00 ft (KB) To 3741.00 ft (KB) (TVD)** Reference Elevations: 1862.00 ft (KB)
 Total Depth: 3741.00 ft (KB) (TVD) 1853.00 ft (CF)
 Hole Diameter: 7.88 inches Hole Condition: Good KB to GR/CF: 9.00 ft

Serial #: 6749 Outside

Press@RunDepth: psig @ 3721.00 ft (KB) Capacity: psig
 Start Date: 2018.07.13 End Date: 2018.07.13 Last Calib.: 2018.07.13
 Start Time: 11:21:39 End Time: 22:03:25 Time On Btm:
 Time Off Btm:

TEST COMMENT: IF: Strong Blow , BOB in 4 minutes, Built to 89.5 inches
 IS: Blow Back Built to 2 inches
 FF: Strong Blow , BOB in 6 minutes, Built to 31 inches, Died off to 23 inches
 FS: No Blow Back



PRESSURE SUMMARY

Time (Min.)	Pressure (psig)	Temp (deg F)	Annotation

Recovery

Length (ft)	Description	Volume (bbl)
0.00	620 GIP	0.00
182.00	MWCO 10%M 30%W 60%O	1.16
259.00	GMCO 5%G 5%M 90%O	3.63
345.00	GSY Oil 10%G 90%O	4.84

* Recovery from multiple tests

Gas Rates

Choke (inches)	Pressure (psig)	Gas Rate (Mcf/d)



**TRILOBITE
TESTING, INC.**

DRILL STEM TEST REPORT

FLUID SUMMARY

Dixon Operating Co

9-23S-12W Stafford

8100 E 22nd St N
Bldg 300 Ste 200
Wichita, KS 67226
ATTN: Bruce Reed

Salem 1-9

Job Ticket: 63986

DST#: 5

Test Start: 2018.07.13 @ 11:21:01

Mud and Cushion Information

Mud Type: Gel Chem

Cushion Type:

Oil API:

36.6 deg API

Mud Weight: 9.00 lb/gal

Cushion Length:

ft

Water Salinity:

27000 ppm

Viscosity: 46.00 sec/qt

Cushion Volume:

bbbl

Water Loss: 10.19 in³

Gas Cushion Type:

Resistivity: ohm.m

Gas Cushion Pressure:

psig

Salinity: 9000.00 ppm

Filter Cake: 0.02 inches

Recovery Information

Recovery Table

Length ft	Description	Volume bbl
0.00	620 GIP	0.000
182.00	MWCO 10%M 30%W 60%O	1.159
259.00	GMCO 5%G 5%M 90%O	3.633
345.00	GSY Oil 10%G 90%O	4.839

Total Length: 786.00 ft Total Volume: 9.631 bbl

Num Fluid Samples: 0

Num Gas Bombs: 0

Serial #:

Laboratory Name:

Laboratory Location:

Recovery Comments: Gravity w as 38.4 @ 78 degrees
RW w as .22 @ 80 degrees

Pressure vs. Time

