



DRILL STEM TEST REPORT

Prepared For: **RF Hembree Oil**
PO Box 542
Ness City, KS 67560

ATTN: Wyatt Urban

Parker #9

25-18S-24W Ness,KS

Start Date: 2018.09.05 @ 14:10:27

End Date: 2018.09.05 @ 21:58:29

Job Ticket #: 63966 DST #: 1

Trilobite Testing, Inc
1515 Commerce Parkway Hays, KS 67601
ph: 785-625-4778 fax: 785-625-5620

Printed: 2018.09.11 @ 08:29:25



TRILOBITE TESTING, INC.

DRILL STEM TEST REPORT

RF Hembree Oil
 PO Box 542
 Ness City, KS 67560
 ATTN: Wyatt Urban

25-18S-24W Ness,KS

Parker #9

Job Ticket: 63966

DST#: 1

Test Start: 2018.09.05 @ 14:10:27

GENERAL INFORMATION:

Formation: **Marmaton**
 Deviated: No Whipstock: ft (KB)
 Test Type: Conventional Bottom Hole (Initial)
 Time Tool Opened: 16:08:29
 Tester: Leal Cason
 Time Test Ended: 21:58:29
 Unit No: 74
 Interval: **3945.00 ft (KB) To 4068.00 ft (KB) (TVD)**
 Reference Elevations: 2257.00 ft (KB)
 Total Depth: 4068.00 ft (KB) (TVD)
 2250.00 ft (CF)
 Hole Diameter: 7.88 inches
 Hole Condition: Good
 KB to GR/CF: 7.00 ft

Serial #: 8875

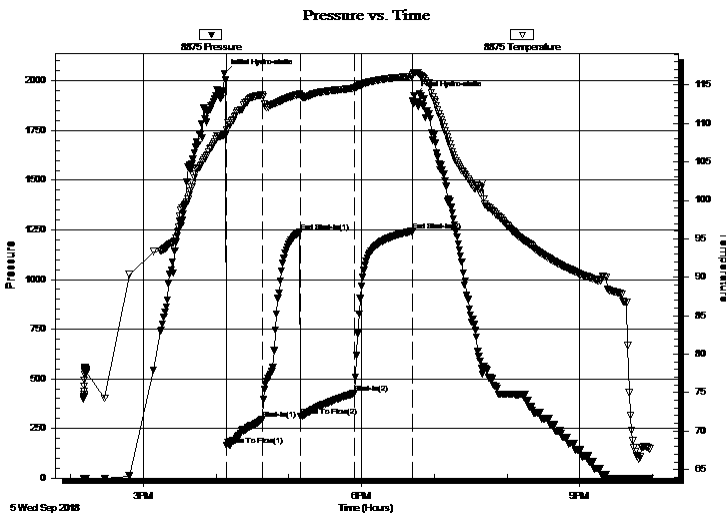
Inside

Press@RunDepth: 426.51 psig @ 3946.00 ft (KB) Capacity: psig
 Start Date: 2018.09.05 End Date: 2018.09.05 Last Calib.: 2018.09.05
 Start Time: 14:10:28 End Time: 21:58:29 Time On Btm: 2018.09.05 @ 16:06:44
 Time Off Btm: 2018.09.05 @ 18:43:14

TEST COMMENT: IF: Strong Blow , BOB in 90 seconds, Built to 187"
 IS: Blow Back Built to 1"
 FF: Strong Blow , BOB in 3 minutes, Built to 125"
 FS: Blow Back Built to 3"

PRESSURE SUMMARY

Time (Min.)	Pressure (psig)	Temp (deg F)	Annotation
0	2037.75	108.56	Initial Hydro-static
2	165.04	108.67	Open To Flow (1)
32	296.82	113.67	Shut-In(1)
63	1238.65	113.79	End Shut-In(1)
63	312.83	113.58	Open To Flow (2)
107	426.51	114.59	Shut-In(2)
155	1242.91	116.13	End Shut-In(2)
157	1925.31	116.56	Final Hydro-static



Recovery

Length (ft)	Description	Volume (bbl)
0.00	1798' GIP	0.00
378.00	GOCM 30%G 20%O 50%M	5.30
565.00	GSY Oil 30%G 70%O	7.93
126.00	MCO 30%M 70%O	1.77

Gas Rates

Choke (inches)	Pressure (psig)	Gas Rate (MMcf/d)



**TRILOBITE
TESTING, INC.**

DRILL STEM TEST REPORT

TOOL DIAGRAM

RF Hembree Oil
PO Box 542
Ness City, KS 67560
ATTN: Wyatt Urban

25-18S-24W Ness,KS
Parker #9
Job Ticket: 63966 **DST#: 1**
Test Start: 2018.09.05 @ 14:10:27

Tool Information

Drill Pipe:	Length: 3943.00 ft	Diameter: 3.80 inches	Volume: 55.31 bbl	Tool Weight: 2100.00 lb
Heavy Wt. Pipe:	Length: 0.00 ft	Diameter: 0.00 inches	Volume: 0.00 bbl	Weight set on Packer: 25000.00 lb
Drill Collar:	Length: 0.00 ft	Diameter: 2.25 inches	Volume: 0.00 bbl	Weight to Pull Loose: 80000.00 lb
			<u>Total Volume: 55.31 bbl</u>	Tool Chased ft
Drill Pipe Above KB:	17.00 ft			String Weight: Initial 67000.00 lb
Depth to Top Packer:	3945.00 ft			Final 69000.00 lb
Depth to Bottom Packer:	ft			
Interval between Packers:	123.00 ft			
Tool Length:	142.00 ft			
Number of Packers:	2	Diameter: 6.75 inches		

Tool Comments:

Tool Description	Length (ft)	Serial No.	Position	Depth (ft)	Accum. Lengths
-------------------------	--------------------	-------------------	-----------------	-------------------	-----------------------

Shut In Tool	5.00			3931.00	
Hydraulic tool	5.00			3936.00	
Packer	5.00			3941.00	19.00 Bottom Of Top Packer
Packer	4.00			3945.00	
Stubb	1.00			3946.00	
Recorder	0.00	8875	Inside	3946.00	
Recorder	0.00	6749	Outside	3946.00	
Perforations	6.00			3952.00	
Change Over Sub	1.00			3953.00	
Drill Pipe	95.00			4048.00	
Change Over Sub	2.00			4050.00	
Perforations	15.00			4065.00	
Bullnose	3.00			4068.00	123.00 Bottom Packers & Anchor

Total Tool Length: 142.00



**TRILOBITE
TESTING, INC.**

DRILL STEM TEST REPORT

FLUID SUMMARY

RF Hembree Oil
PO Box 542
Ness City, KS 67560
ATTN: Wyatt Urban

25-18S-24W Ness,KS
Parker #9
Job Ticket: 63966 **DST#: 1**
Test Start: 2018.09.05 @ 14:10:27

Mud and Cushion Information

Mud Type: Gel Chem	Cushion Type:	Oil API: 45.5 deg API
Mud Weight: 9.00 lb/gal	Cushion Length: ft	Water Salinity: ppm
Viscosity: 54.00 sec/qt	Cushion Volume: bbl	
Water Loss: 9.97 in ³	Gas Cushion Type:	
Resistivity: ohm.m	Gas Cushion Pressure: psig	
Salinity: 3500.00 ppm		
Filter Cake: 0.02 inches		

Recovery Information

Recovery Table

Length ft	Description	Volume bbl
0.00	1798' GIP	0.000
378.00	GOCM 30%G 20%O 50%M	5.302
565.00	GSY Oil 30%G 70%O	7.925
126.00	MCO 30%M 70%O	1.767

Total Length: 1069.00 ft Total Volume: 14.994 bbl
Num Fluid Samples: 0 Num Gas Bombs: 0 Serial #:
Laboratory Name: Laboratory Location:
Recovery Comments: Gravity w as 46.4 @ 69 degrees

Serial #: 8875

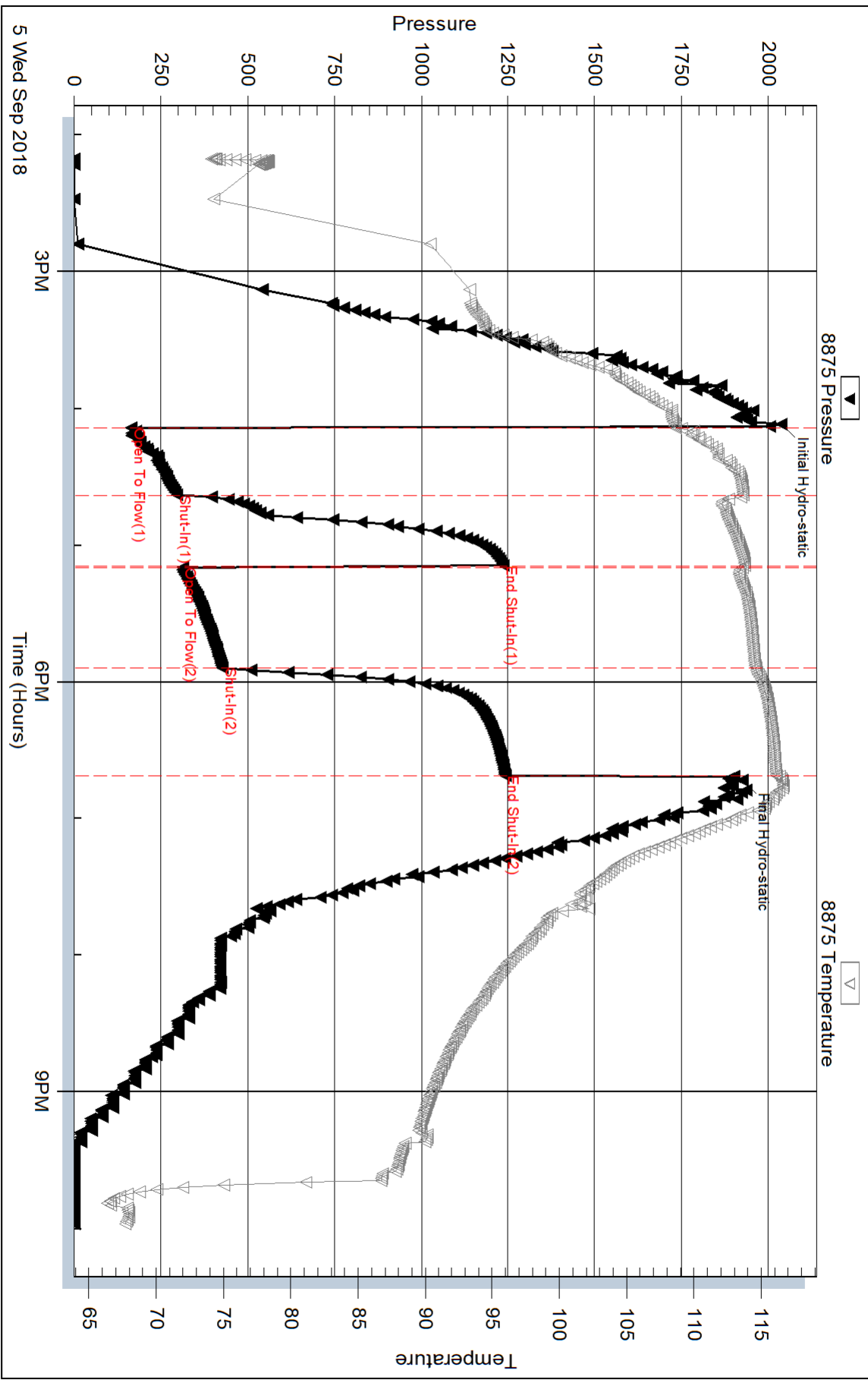
Inside

RF Hembree Oil

Parker #9

DST Test Number: 1

Pressure vs. Time

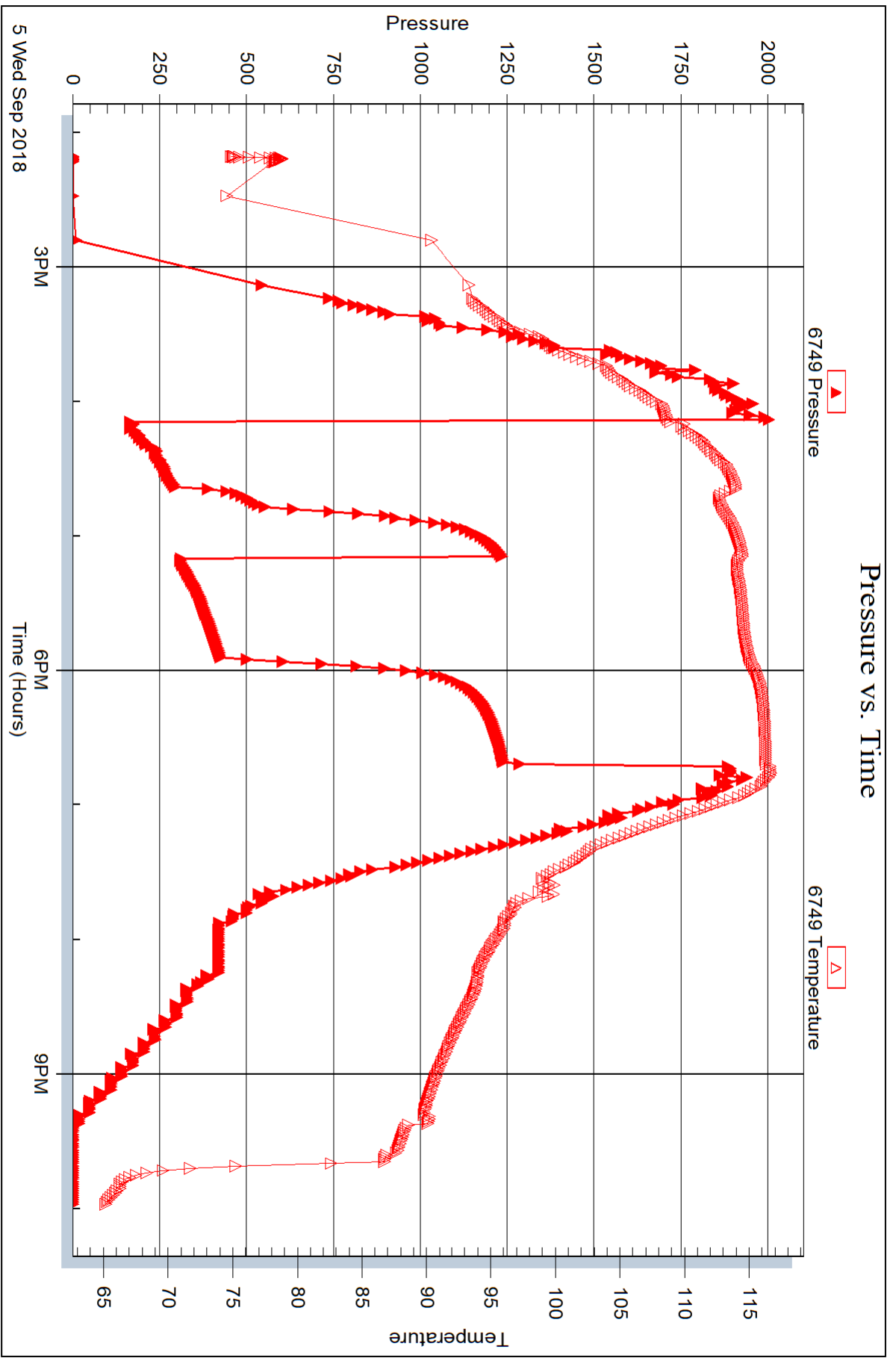


Serial #: 6749

Outside RF Hembree Oil

Parker #9

DST Test Number: 1





DRILL STEM TEST REPORT

Prepared For: **RF Hembree Oil**

PO Box 542
Ness City, KS 67560

ATTN: Wyatt Urban

Parker #9

25-18S-24W Ness,KS

Start Date: 2018.09.06 @ 13:51:54

End Date: 2018.09.06 @ 19:39:56

Job Ticket #: 63967 DST #: 2

Trilobite Testing, Inc
1515 Commerce Parkway Hays, KS 67601
ph: 785-625-4778 fax: 785-625-5620

Printed: 2018.09.11 @ 08:29:01



**TRILOBITE
TESTING, INC.**

DRILL STEM TEST REPORT

RF Hembree Oil
PO Box 542
Ness City, KS 67560
ATTN: Wyatt Urban

25-18S-24W Ness,KS

Parker #9

Job Ticket: 63967

DST#: 2

Test Start: 2018.09.06 @ 13:51:54

GENERAL INFORMATION:

Formation: **Ft Scott**

Deviated: No Whipstock: ft (KB)

Time Tool Opened: 15:51:41

Time Test Ended: 19:39:56

Test Type: Conventional Bottom Hole (Reset)

Tester: Leal Cason

Unit No: 74

Interval: 4163.00 ft (KB) To 4212.00 ft (KB) (TVD)

Total Depth: 4212.00 ft (KB) (TVD)

Hole Diameter: 7.88 inches Hole Condition: Good

Reference Elevations: 2257.00 ft (KB)

2250.00 ft (CF)

KB to GR/CF: 7.00 ft

Serial #: 8875

Inside

Press@RunDepth: 25.21 psig @ 4164.00 ft (KB)

Start Date: 2018.09.06

End Date:

2018.09.06

Start Time: 13:51:57

End Time:

19:39:56

Capacity: psig

Last Calib.: 2018.09.06

Time On Btm: 2018.09.06 @ 15:50:56

Time Off Btm: 2018.09.06 @ 17:55:41

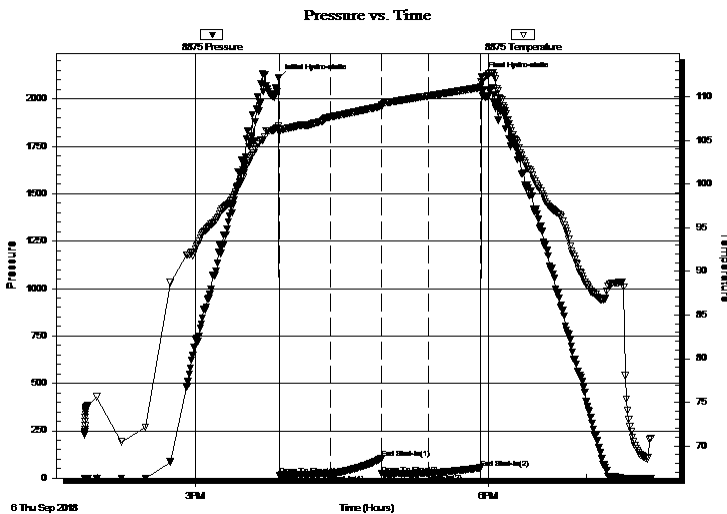
TEST COMMENT: IF: Weak Blow , Built to 1 1/4"

IS: No Blow Back

FF: Weak Surface Blow

FS: No Blow Back

PRESSURE SUMMARY



Time (Min.)	Pressure (psig)	Temp (deg F)	Annotation
0	2108.95	106.62	Initial Hydro-static
1	15.66	105.89	Open To Flow (1)
32	21.30	107.66	Shut-In(1)
64	102.67	108.90	End Shut-In(1)
64	22.37	108.90	Open To Flow (2)
92	25.21	110.07	Shut-In(2)
125	54.35	111.07	End Shut-In(2)
125	2119.12	111.60	Final Hydro-static

Recovery

Length (ft)	Description	Volume (bbl)
25.00	SGCM 2%G 98%M	0.35

Gas Rates

Choke (inches)	Pressure (psig)	Gas Rate (MMcf/d)

* Recovery from multiple tests



**TRILOBITE
TESTING, INC.**

DRILL STEM TEST REPORT

TOOL DIAGRAM

RF Hembree Oil

25-18S-24W Ness,KS

PO Box 542
Ness City, KS 67560

Parker #9

Job Ticket: 63967

DST#: 2

ATTN: Wyatt Urban

Test Start: 2018.09.06 @ 13:51:54

Tool Information

Drill Pipe:	Length: 4164.00 ft	Diameter: 3.80 inches	Volume: 58.41 bbl	Tool Weight:	2100.00 lb
Heavy Wt. Pipe:	Length: 0.00 ft	Diameter: 0.00 inches	Volume: 0.00 bbl	Weight set on Packer:	25000.00 lb
Drill Collar:	Length: 0.00 ft	Diameter: 2.25 inches	Volume: 0.00 bbl	Weight to Pull Loose:	80000.00 lb
			<u>Total Volume: 58.41 bbl</u>	Tool Chased	ft
Drill Pipe Above KB:	20.00 ft			String Weight: Initial	66000.00 lb
Depth to Top Packer:	4163.00 ft			Final	66000.00 lb
Depth to Bottom Packer:	ft				
Interval between Packers:	50.00 ft				
Tool Length:	69.00 ft				
Number of Packers:	2	Diameter: 6.75 inches			

Tool Comments:

Tool Description	Length (ft)	Serial No.	Position	Depth (ft)	Accum. Lengths
------------------	-------------	------------	----------	------------	----------------

Shut In Tool	5.00			4149.00	
Hydraulic tool	5.00			4154.00	
Packer	5.00			4159.00	19.00 Bottom Of Top Packer
Packer	4.00			4163.00	
Stubb	1.00			4164.00	
Recorder	0.00	8875	Inside	4164.00	
Recorder	0.00	6749	Outside	4164.00	
Perforations	6.00			4170.00	
Change Over Sub	1.00			4171.00	
Drill Pipe	32.00			4203.00	
Change Over Sub	2.00			4205.00	
Perforations	5.00			4210.00	
Bullnose	3.00			4213.00	50.00 Bottom Packers & Anchor

Total Tool Length: 69.00



TRILOBITE
TESTING, INC.

DRILL STEM TEST REPORT

FLUID SUMMARY

RF Hembree Oil
PO Box 542
Ness City, KS 67560
ATTN: Wyatt Urban

25-18S-24W Ness,KS
Parker #9
Job Ticket: 63967 **DST#: 2**
Test Start: 2018.09.06 @ 13:51:54

Mud and Cushion Information

Mud Type: Gel Chem	Cushion Type:	Oil API:	deg API
Mud Weight: 9.00 lb/gal	Cushion Length: ft	Water Salinity:	ppm
Viscosity: 55.00 sec/qt	Cushion Volume: bbl		
Water Loss: 9.98 in ³	Gas Cushion Type:		
Resistivity: ohm.m	Gas Cushion Pressure: psig		
Salinity: 6000.00 ppm			
Filter Cake: 0.02 inches			

Recovery Information

Recovery Table

Length ft	Description	Volume bbl
25.00	SGCM 2%G 98%M	0.351

Total Length: 25.00 ft Total Volume: 0.351 bbl
Num Fluid Samples: 0 Num Gas Bombs: 0 Serial #:
Laboratory Name: Laboratory Location:
Recovery Comments:

Serial #: 8875

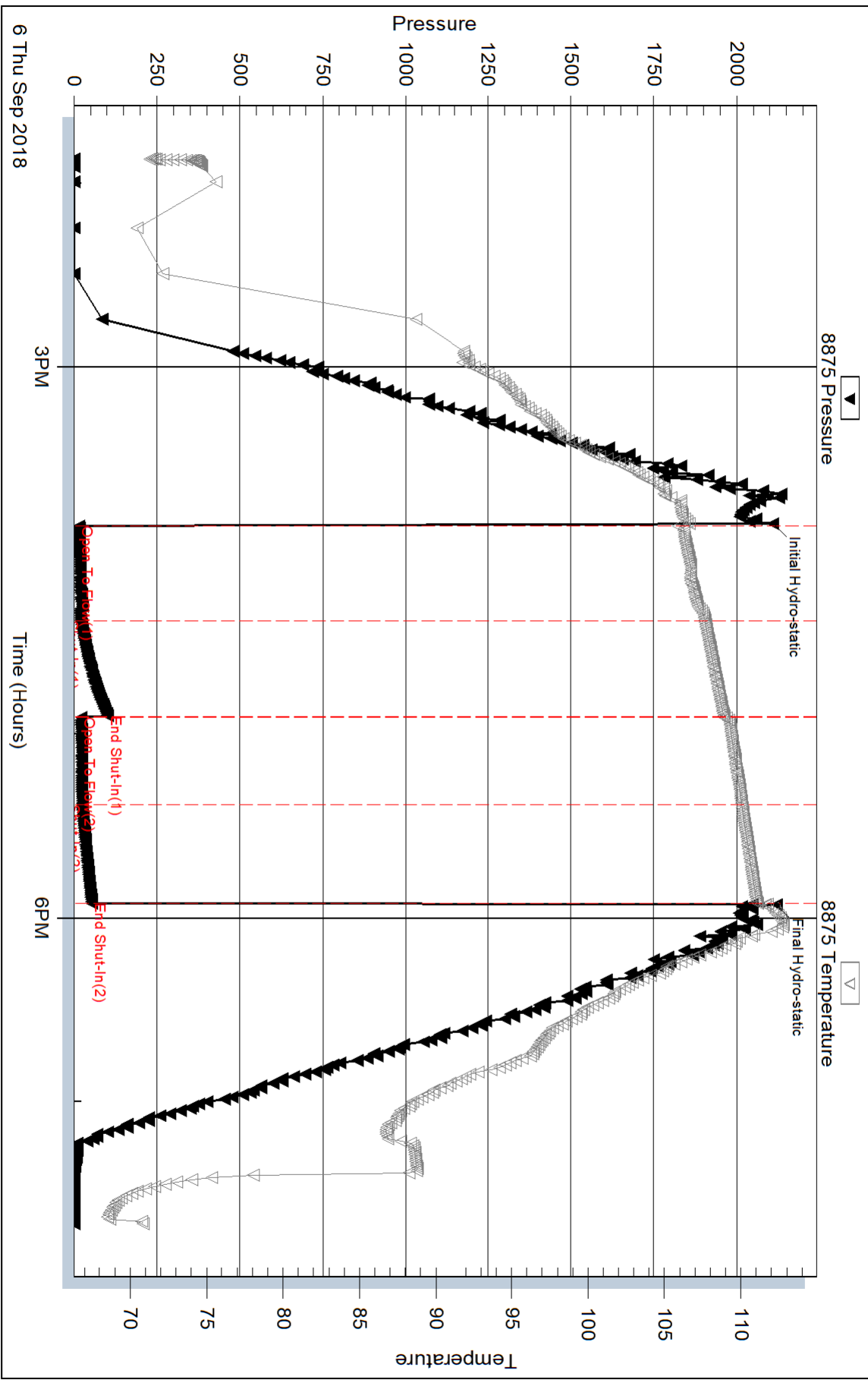
Inside

RF Hembree Oil

Parker #9

DST Test Number: 2

Pressure vs. Time



Trilobite Testing, Inc

Ref. No: 63967

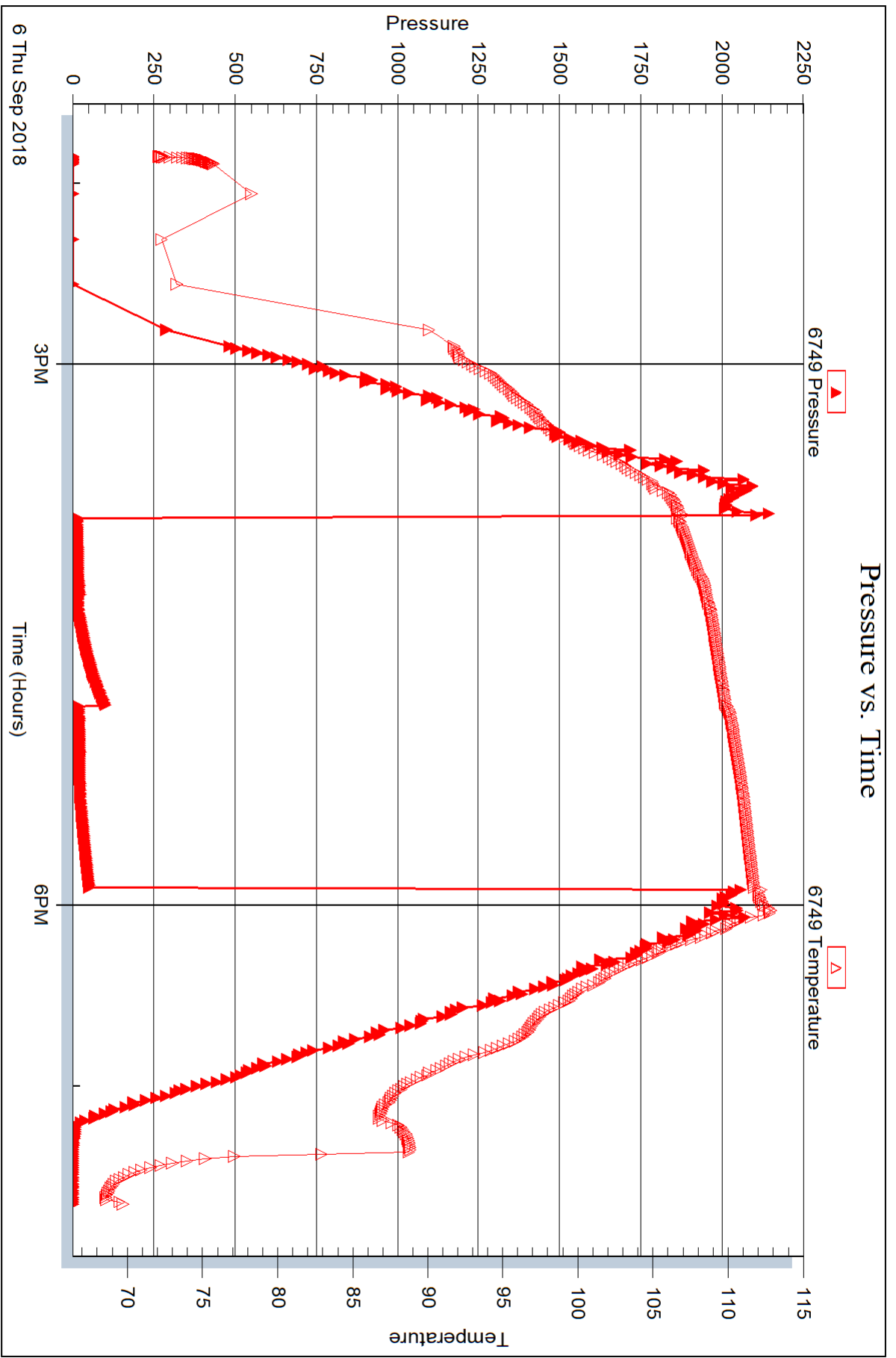
Printed: 2018.09.11 @ 08:29:02

Serial #: 6749

Outside RF Hembree Oil

Parker #9

DST Test Number: 2



Trilobite Testing, Inc

Ref. No: 63967

Printed: 2018.09.11 @ 08:29:03



DRILL STEM TEST REPORT

Prepared For: **RF Hembree Oil**

PO Box 542
Ness City, KS 67560

ATTN: Wyatt Urban

Parker #9

25-18S-24W Ness,KS

Start Date: 2018.09.07 @ 08:52:19

End Date: 2018.09.07 @ 14:50:21

Job Ticket #: 63968 DST #: 3

Trilobite Testing, Inc
1515 Commerce Parkway Hays, KS 67601
ph: 785-625-4778 fax: 785-625-5620

Printed: 2018.09.11 @ 08:28:37



TRILOBITE TESTING, INC.

DRILL STEM TEST REPORT

RF Hembree Oil
 PO Box 542
 Ness City, KS 67560
 ATTN: Wyatt Urban

25-18S-24W Ness,KS

Parker #9

Job Ticket: 63968

DST#: 3

Test Start: 2018.09.07 @ 08:52:19

GENERAL INFORMATION:

Formation: **Mississippi**
 Deviated: No Whipstock: ft (KB)
 Time Tool Opened: 10:47:06
 Time Test Ended: 14:50:21
 Interval: **4221.00 ft (KB) To 4283.00 ft (KB) (TVD)**
 Total Depth: 4283.00 ft (KB) (TVD)
 Hole Diameter: 7.88 inches Hole Condition: Good
 Test Type: Conventional Bottom Hole (Reset)
 Tester: Leal Cason
 Unit No: 74
 Reference Elevations: 2257.00 ft (KB)
 2250.00 ft (CF)
 KB to GR/CF: 7.00 ft

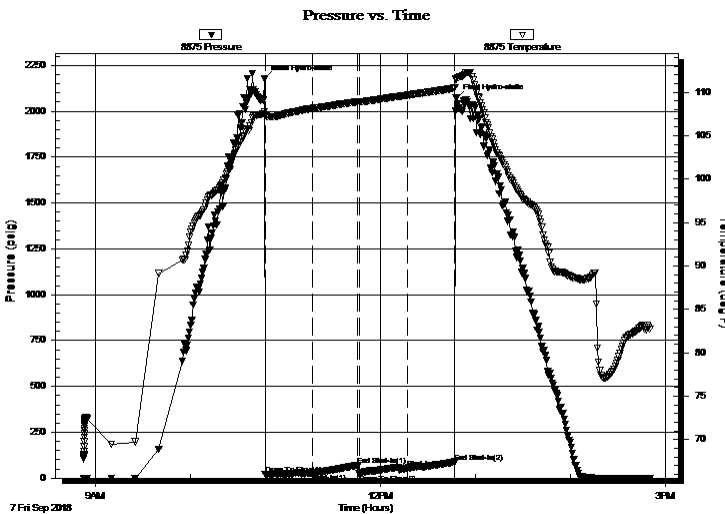
Serial #: 8875

Inside

Press@RunDepth: 53.86 psig @ 4222.00 ft (KB) Capacity: psig
 Start Date: 2018.09.07 End Date: 2018.09.07 Last Calib.: 2018.09.07
 Start Time: 08:52:20 End Time: 14:50:21 Time On Btm: 2018.09.07 @ 10:46:36
 Time Off Btm: 2018.09.07 @ 12:47:51

TEST COMMENT: IF: Weak Blow , Built to 1 1/2"
 IS: No Blow Back
 FF: Weak Surface Blow
 FS: No Blow Back

PRESSURE SUMMARY



Time (Min.)	Pressure (psig)	Temp (deg F)	Annotation
0	2174.96	107.81	Initial Hydro-static
1	20.18	107.33	Open To Flow (1)
31	24.53	108.13	Shut-In(1)
60	70.67	108.91	End Shut-In(1)
60	22.31	108.92	Open To Flow (2)
91	53.86	109.65	Shut-In(2)
121	88.31	110.51	End Shut-In(2)
122	2071.19	111.44	Final Hydro-static

Recovery

Length (ft)	Description	Volume (bbl)
25.00	SOCM 2%O 98%M	0.35

* Recovery from multiple tests

Gas Rates

Choke (inches)	Pressure (psig)	Gas Rate (MMcf/d)



TRILOBITE
TESTING, INC.

DRILL STEM TEST REPORT

RF Hembree Oil
PO Box 542
Ness City, KS 67560
ATTN: Wyatt Urban

25-18S-24W Ness,KS

Parker #9

Job Ticket: 63968

DST#: 3

Test Start: 2018.09.07 @ 08:52:19

GENERAL INFORMATION:

Formation: **Mississippi**

Deviated: No Whipstock: ft (KB)

Time Tool Opened: 10:47:06

Time Test Ended: 14:50:21

Test Type: Conventional Bottom Hole (Reset)

Tester: Leal Cason

Unit No: 74

Interval: 4221.00 ft (KB) To 4283.00 ft (KB) (TVD)

Total Depth: 4283.00 ft (KB) (TVD)

Hole Diameter: 7.88 inches Hole Condition: Good

Reference Elevations: 2257.00 ft (KB)

2250.00 ft (CF)

KB to GR/CF: 7.00 ft

Serial #: 6749 Outside

Press@RunDepth: psig @ 4222.00 ft (KB)

Start Date: 2018.09.07 End Date: 2018.09.07

Start Time: 08:52:05 End Time: 14:50:06

Capacity: psig

Last Calib.: 2018.09.07

Time On Btm:

Time Off Btm:

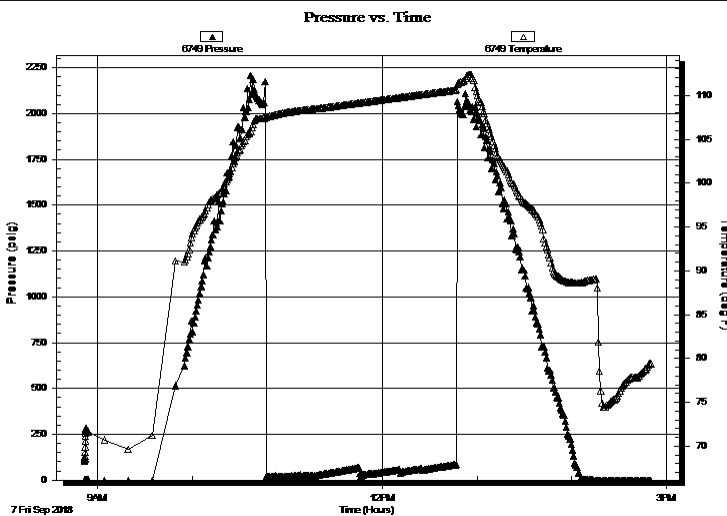
TEST COMMENT: IF: Weak Blow , Built to 1 1/2"

IS: No Blow Back

FF: Weak Surface Blow

FS: No Blow Back

PRESSURE SUMMARY



Time (Min.)	Pressure (psig)	Temp (deg F)	Annotation

Recovery

Length (ft)	Description	Volume (bbl)
25.00	SOCM 2%O 98%M	0.35

Gas Rates

Choke (inches)	Pressure (psig)	Gas Rate (MMcf/d)

* Recovery from multiple tests



**TRILOBITE
TESTING, INC.**

DRILL STEM TEST REPORT

TOOL DIAGRAM

RF Hembree Oil
PO Box 542
Ness City, KS 67560
ATTN: Wyatt Urban

25-18S-24W Ness,KS
Parker #9
Job Ticket: 63968 **DST#: 3**
Test Start: 2018.09.07 @ 08:52:19

Tool Information

Drill Pipe:	Length: 4227.00 ft	Diameter: 3.80 inches	Volume: 59.29 bbl	Tool Weight:	2100.00 lb
Heavy Wt. Pipe:	Length: 0.00 ft	Diameter: 0.00 inches	Volume: 0.00 bbl	Weight set on Packer:	25000.00 lb
Drill Collar:	Length: 0.00 ft	Diameter: 2.25 inches	Volume: 0.00 bbl	Weight to Pull Loose:	80000.00 lb
			<u>Total Volume: 59.29 bbl</u>	Tool Chased	ft
Drill Pipe Above KB:	25.00 ft			String Weight: Initial	68000.00 lb
Depth to Top Packer:	4221.00 ft			Final	68000.00 lb
Depth to Bottom Packer:	ft				
Interval between Packers:	62.00 ft				
Tool Length:	81.00 ft				
Number of Packers:	2	Diameter: 6.75 inches			

Tool Comments:

Tool Description	Length (ft)	Serial No.	Position	Depth (ft)	Accum. Lengths
-------------------------	--------------------	-------------------	-----------------	-------------------	-----------------------

Shut In Tool	5.00			4207.00	
Hydraulic tool	5.00			4212.00	
Packer	5.00			4217.00	19.00 Bottom Of Top Packer
Packer	4.00			4221.00	
Stubb	1.00			4222.00	
Recorder	0.00	8875	Inside	4222.00	
Recorder	0.00	6749	Outside	4222.00	
Perforations	8.00			4230.00	
Change Over Sub	1.00			4231.00	
Drill Pipe	32.00			4263.00	
Change Over Sub	2.00			4265.00	
Perforations	15.00			4280.00	
Bullnose	3.00			4283.00	62.00 Bottom Packers & Anchor

Total Tool Length: 81.00



**TRILOBITE
TESTING, INC.**

DRILL STEM TEST REPORT

FLUID SUMMARY

RF Hembree Oil

25-18S-24W Ness,KS

PO Box 542
Ness City, KS 67560

Parker #9

Job Ticket: 63968

DST#: 3

ATTN: Wyatt Urban

Test Start: 2018.09.07 @ 08:52:19

Mud and Cushion Information

Mud Type: Gel Chem

Cushion Type:

Oil API:

deg API

Mud Weight: 9.00 lb/gal

Cushion Length:

ft

Water Salinity:

ppm

Viscosity: 62.00 sec/qt

Cushion Volume:

bbbl

Water Loss: 9.98 in³

Gas Cushion Type:

Resistivity: ohm.m

Gas Cushion Pressure:

psig

Salinity: 6000.00 ppm

Filter Cake: 0.02 inches

Recovery Information

Recovery Table

Length ft	Description	Volume bbl
25.00	SOCM 2%O 98%M	0.351

Total Length: 25.00 ft Total Volume: 0.351 bbl

Num Fluid Samples: 0

Num Gas Bombs: 0

Serial #:

Laboratory Name:

Laboratory Location:

Recovery Comments:

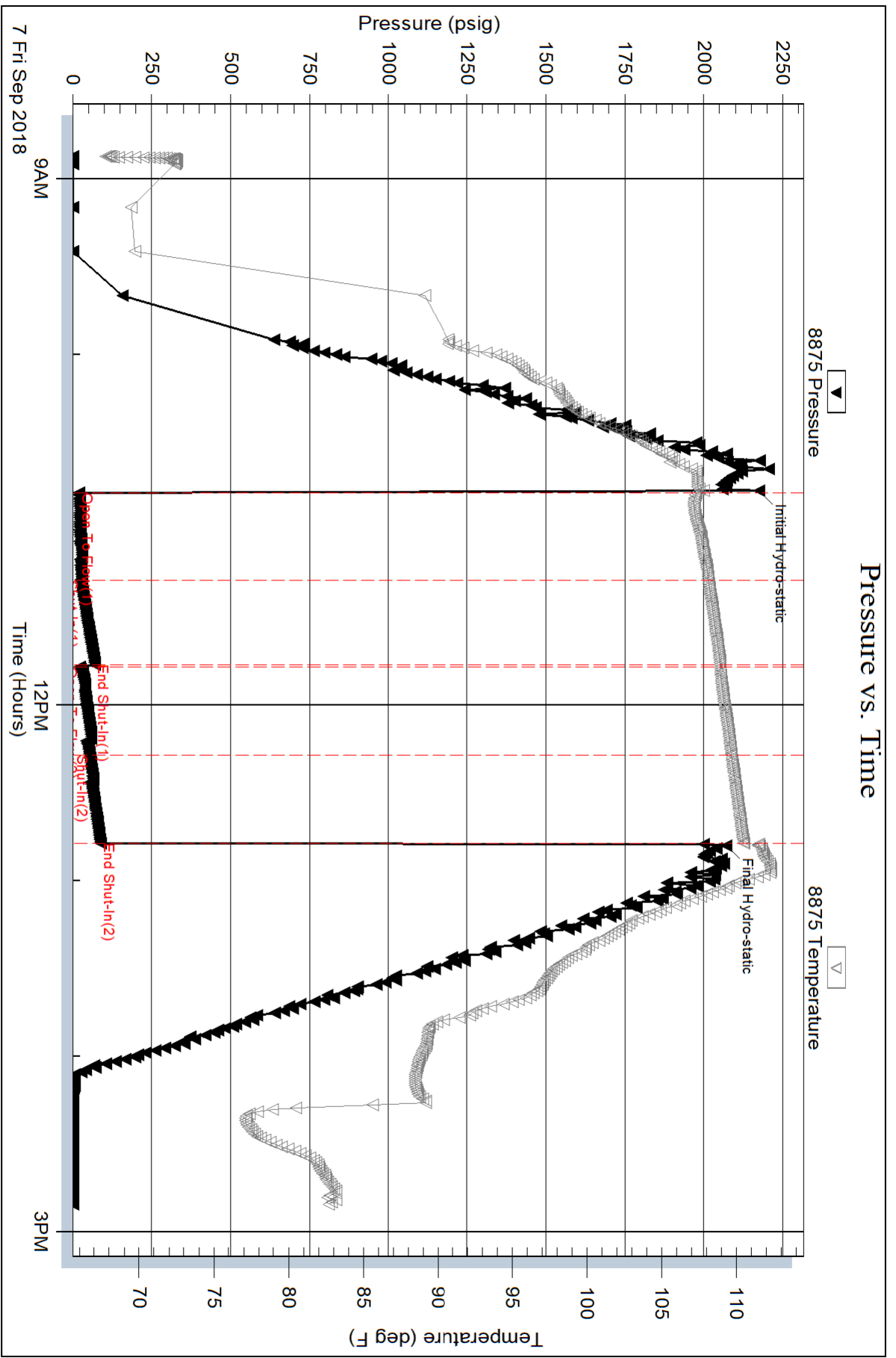
Serial #: 8875

Inside

RF Hembree Oil

Parker #9

DST Test Number: 3



Triobite Testing, Inc

Ref. No: 63968

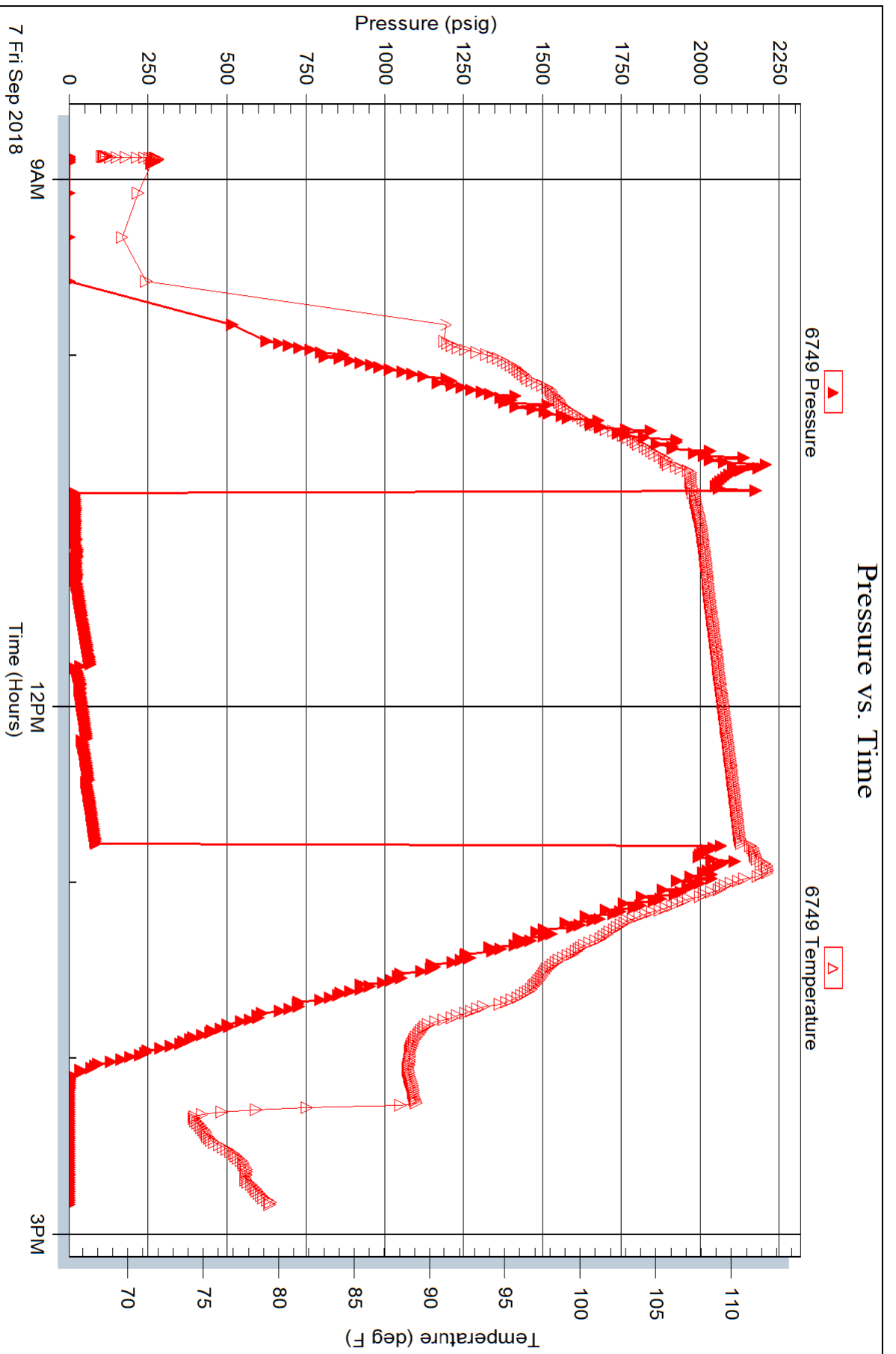
Printed: 2018.09.11 @ 08:28:38

Serial #: 6749

Outside RF Hembree Oil

Parker #9

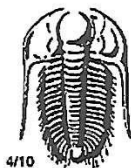
DST Test Number: 3



Trilobite Testing, Inc

Ref. No: 63968

Printed: 2018.09.11 @ 08:28:38



TRILOBITE TESTING INC.

1515 Commerce Parkway • Hays, Kansas 67601

Test Ticket

NO. 63966

Well Name & No. Parker 9 Test No. 1 Date 09/05/18
 Company R F Hembree Oil Elevation 2257 KB 2250 GL
 Address Po Box 542 Ness City, KS 67560
 Co. Rep/Geo. Wyatt Urban Rig Pickrell 10
 Location: Sec. 25 Twp 4~~2~~ 18^S Rge. 24~~W~~ Co. Ness State KS

Interval Tested 3945 - 4068 Zone Tested Marmaton
 Anchor Length 123 Drill Pipe Run 3943 Mud Wt. 8.9
 Top Packer Depth 3940 Drill Collars Run 0 Vis 54
 Bottom Packer Depth 3945 Wt. Pipe Run 0 WL 10
 Total Depth 4068 Chlorides 3500 ppm System LCM 2.5

Blow Description IF: strong Blow, BOB in 90 seconds, Built to 197 inches
IST: ~~Blow~~ Blow Back Built to Linch
FF: strong Blow, BOB in 3 minutes, Built to 125 inches
ESI: Blow Back Built to 3 inches

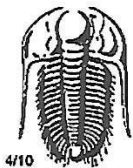
Rec	Feet of	%gas	%oil	%water	%mud
<u>1798</u>	<u>GIP</u>				
<u>126</u>	<u>MCO</u>		<u>70%</u>		<u>30%</u>
<u>565</u>	<u>654 Oil</u>	<u>30%</u>	<u>70%</u>		
<u>378</u>	<u>66cm</u>	<u>30%</u>	<u>20%</u>		<u>50%</u>
Rec	Feet of	%gas	%oil	%water	%mud

Rec Total 1069 BHT 116 Gravity 45.5 API RW NIC @ NIC °F Chlorides NIC ppm

(A) Initial Hydrostatic 2038 Test 1150 T-On Location 13:00
 (B) First Initial Flow 165 Jars _____ T-Started 14:10
 (C) First Final Flow 297 Safety Joint _____ T-Open 16:08
 (D) Initial Shut-In 1238 Circ Sub _____ T-Pulled 18:41
 (E) Second Initial Flow 313 Hourly Standby _____ T-Out 21:58
 (F) Second Final Flow 426 Mileage 130 130 Comments Stayed in Ness
 (G) Final Shut-In 1243 Sampler _____
 (H) Final Hydrostatic 1925 Straddle _____

Initial Open 30 Ruined Shale Packer _____
 Initial Shut-In 30 Ruined Packer _____
 Final Flow 45 Extra Packer _____
 Final Shut-In 45 Extra Recorder _____
 Sub Total 0
 Total 1280
 Sub Total 1280 Accessibility _____ MP/DST Disc't _____

Approved By _____ Our Representative [Signature]
 Trilobite Testing Inc. shall not be liable for damaged of any kind of the property or personnel of the one for whom a test is made, or for any loss suffered or sustained, directly or indirectly, through the use of its equipment, or its statements or opinion concerning the results of any test, tools lost or damaged in the hole shall be paid for at cost by the party for whom the test is made.



TRILOBITE TESTING INC.

1515 Commerce Parkway • Hays, Kansas 67601

Test Ticket

NO. 63967

Well Name & No. Parker 9 Test No. 2 Date 09/06/18
 Company RF Hembree Oil Elevation 2257 KB _____ GL _____
 Address PO Box 542 Ness City, KS 67560
 Co. Rep / Geo. Wyatt Urban Rig Pickrell 10
 Location: Sec. 25 Twp 18S Rge. 24W Co. Ness State KS

Interval Tested 4163 - 4212 Zone Tested Ft. Scott
 Anchor Length 49 Drill Pipe Run 4164 Mud Wt. 8.9
 Top Packer Depth 4158 Drill Collars Run 0 Vis 55
 Bottom Packer Depth 4163 Wt. Pipe Run 0 WL 10
 Total Depth 4212 Chlorides 6000 ppm System LCM 2

Blow Description FE: Weak Blow, Built to 1 1/4 inch

ISI: NO Blow Back

EF: Weak Surface Blow

FST: NO Blow Back

Rec	Feet of	%gas	%oil	%water	%mud
<u>25</u>	<u>56CM</u>	<u>2</u>		<u>98</u>	
Rec	Feet of	%gas	%oil	%water	%mud
Rec	Feet of	%gas	%oil	%water	%mud
Rec	Feet of	%gas	%oil	%water	%mud
Rec	Feet of	%gas	%oil	%water	%mud

Rec Total 25 BHT 112 Gravity N/C API RW N/C @ N/C F Chlorides N/C ppm

(A) Initial Hydrostatic 2109 Test 1150 T-On Location 13:30

(B) First Initial Flow 15 Jars _____ T-Started 13:51

(C) First Final Flow 21 Safety Joint _____ T-Open 15:51

(D) Initial Shut-In 103 Circ Sub _____ T-Pulled 17:55

(E) Second Initial Flow 22 Hourly Standby _____ T-Out 19:39

(F) Second Final Flow 25 Mileage (130) 130 Comments Stayed in Ness

(G) Final Shut-In 54 Sampler _____

(H) Final Hydrostatic 2119 Straddle _____

Ruined Shale Packer _____

Shale Packer _____ Ruined Packer _____

Extra Packer _____ Extra Copies _____

Extra Recorder _____ Sub Total 0

Day Standby _____ Total 1230

Accessibility _____ MP/DST Disc't _____

Sub Total 1230

Approved By _____ Our Representative [Signature]

Trilobite Testing Inc. shall not be liable for damaged of any kind of the property or personnel of the one for whom a test is made, or for any loss suffered or sustained, directly or indirectly, through the use of its equipment, or its statements or opinion concerning the results of any test, tools lost or damaged in the hole shall be paid for at cost by the party for whom the test is made.



TRILOBITE TESTING INC.

1515 Commerce Parkway • Hays, Kansas 67601

Test Ticket

NO. 63968

Well Name & No. Parker 9 Test No. 3 Date 09/07/08
 Company RF Hembree Oil Elevation 2257 KB 2250 GL
 Address PO Box 542 Ness City, KS 67560
 Co. Rep/Geo. Wyatt Urban Rig Pickrell 10
 Location: Sec. 25 Twp 18S Rge. 24W Co. Ness State KS

Interval Tested 4221 - 4283 Zone Tested Mississippi
 Anchor Length 62 Drill Pipe Run 4227 Mud Wt. 9
 Top Packer Depth 4216 Drill Collars Run 0 Vis 62
 Bottom Packer Depth 4221 Wt. Pipe Run 0 WL 10
 Total Depth 4283 Chlorides 6000 ppm System LCM 1.5

Blow Description IF: Weak Blow, Built to 1 1/2 inch
ISI: NO Blow Back
EF: Weak Surface Blow
FSI: NO Blow Back

Rec	Feet of	%gas	%oil	%water	%mud
<u>25</u>	<u>SOCM</u>	<u>2</u>			<u>92</u>
Rec	Feet of	%gas	%oil	%water	%mud
Rec	Feet of	%gas	%oil	%water	%mud
Rec	Feet of	%gas	%oil	%water	%mud

Rec Total 25 BHT 112 Gravity NIC API RW NIC @ NIC F Chlorides NIC ppm

(A) Initial Hydrostatic 2175 Test 1150 T-On Location 08:00
 (B) First Initial Flow 20 Jars _____ T-Started 08:52
 (C) First Final Flow 24 Safety Joint _____ T-Open 11:46
 (D) Initial Shut-In 70 Circ Sub _____ T-Pulled 12:47
 (E) Second Initial Flow 22 Hourly Standby _____ T-Out 14:50
 (F) Second Final Flow 54 Mileage 130 130 Comments Stayed in nest
 (G) Final Shut-In 88 Sampler _____
 (H) Final Hydrostatic 2071 Straddle _____

Ruined Shale Packer _____
 Ruined Packer _____
 Extra Packer _____
 Extra Copies _____
 Initial Open 30
 Initial Shut-In 30
 Final Flow 30
 Final Shut-In 36
 Extra Recorder _____
 Day Standby _____
 Accessibility _____
 Sub Total 1280
 Total 1280
 MP/DST Disc't _____

Approved By _____ Our Representative [Signature]

Trilobite Testing Inc. shall not be liable for damaged of any kind of the property or personnel of the one for whom a test is made, or for any loss suffered or sustained, directly or indirectly, through the use of its equipment, or its statements or opinion concerning the results of any test, tools lost or damaged in the hole shall be paid for at cost by the party for whom the test is made.