



**TRILOBITE  
TESTING, INC.**

# DRILL STEM TEST REPORT

Pickrell Drilling Co

**24-28S-6W Kingman**

100 S Main Ste 505  
Wichita, KS 67202

**Thissen D 1**

Job Ticket: 63977

**DST#: 2**

ATTN: Aaron Young

Test Start: 2018.06.13 @ 12:28:56

## GENERAL INFORMATION:

Formation: **Mississippi**

Deviated: No Whipstock: ft (KB)

Time Tool Opened: 13:59:43

Time Test Ended: 19:54:58

Test Type: Conventional Bottom Hole (Reset)

Tester: Leal Cason

Unit No: 74

**Interval: 3910.00 ft (KB) To 3934.00 ft (KB) (TVD)**

Reference Elevations: 1444.00 ft (KB)

Total Depth: 3934.00 ft (KB) (TVD)

1437.00 ft (CF)

Hole Diameter: 7.88 inches Hole Condition: Good

KB to GR/CF: 7.00 ft

**Serial #: 8875**

**Inside**

Press@RunDepth: 153.92 psig @ 3911.00 ft (KB)

Capacity: psig

Start Date: 2018.06.13

End Date:

2018.06.13

Last Calib.:

2018.06.13

Start Time:

12:28:57

End Time:

19:54:58

Time On Btm:

2018.06.13 @ 13:57:58

Time Off Btm:

2018.06.13 @ 18:02:43

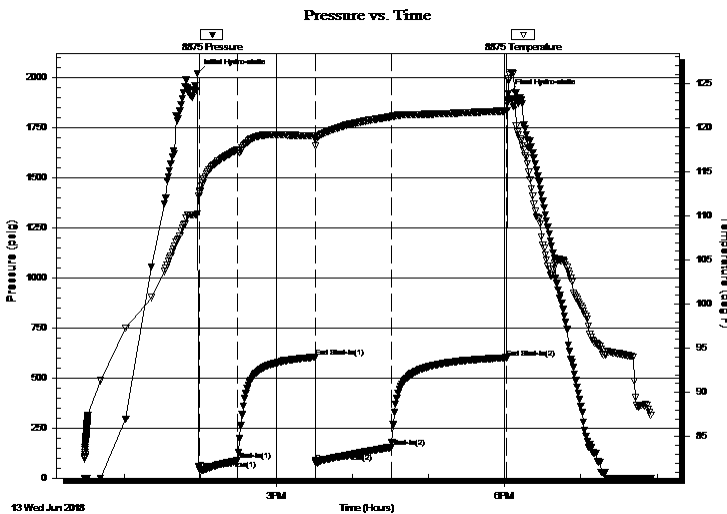
**TEST COMMENT:** IF: Strong Blow , BOB in 30 seconds, Built to 315 inches

IS: No Blow Back

FF: Strong Blow , BOB Immediate, Built to 343 inches, GTS in 22 minutes, Caught Sample, TSTM

FS: No Blow Back

## PRESSURE SUMMARY



Time (Min.)	Pressure (psig)	Temp (deg F)	Annotation
0	2022.31	110.25	Initial Hydro-static
2	41.90	112.67	Open To Flow (1)
32	88.91	117.49	Shut-In(1)
93	603.99	119.03	End Shut-In(1)
94	80.13	118.58	Open To Flow (2)
153	153.92	121.24	Shut-In(2)
244	602.09	121.94	End Shut-In(2)
245	1919.83	125.26	Final Hydro-static

## Recovery

Length (ft)	Description	Volume (bbl)
0.00	3624 GIP	0.00
186.00	Water	2.05
62.00	OMCW 5%O 10%M 85%W	0.87
40.00	GOMCW 5%G 10%O 30%M 55%W	0.56

\* Recovery from multiple tests

## Gas Rates

	Choke (inches)	Pressure (psig)	Gas Rate (Mcf/d)





**TRILOBITE  
TESTING, INC.**

# DRILL STEM TEST REPORT

**FLUID SUMMARY**

Pickrell Drilling Co

**24-28S-6W Kingman**

100 S Main Ste 505  
Wichita, KS 67202

**Thissen D 1**

Job Ticket: 63977

**DST#: 2**

ATTN: Aaron Young

Test Start: 2018.06.13 @ 12:28:56

## Mud and Cushion Information

Mud Type: Gel Chem

Cushion Type:

Oil API:

deg API

Mud Weight: 9.00 lb/gal

Cushion Length:

ft

Water Salinity:

89000 ppm

Viscosity: 57.00 sec/qt

Cushion Volume:

bbbl

Water Loss: 9.59 in<sup>3</sup>

Gas Cushion Type:

Resistivity: ohm.m

Gas Cushion Pressure:

psig

Salinity: 8000.00 ppm

Filter Cake: 0.02 inches

## Recovery Information

Recovery Table

Length ft	Description	Volume bbbl
0.00	3624 GIP	0.000
186.00	Water	2.053
62.00	OMCW 5%O 10%M 85%W	0.870
40.00	GOMCW 5%G 10%O 30%M 55%W	0.561

Total Length: 288.00 ft      Total Volume: 3.484 bbl

Num Fluid Samples: 0

Num Gas Bombs: 0

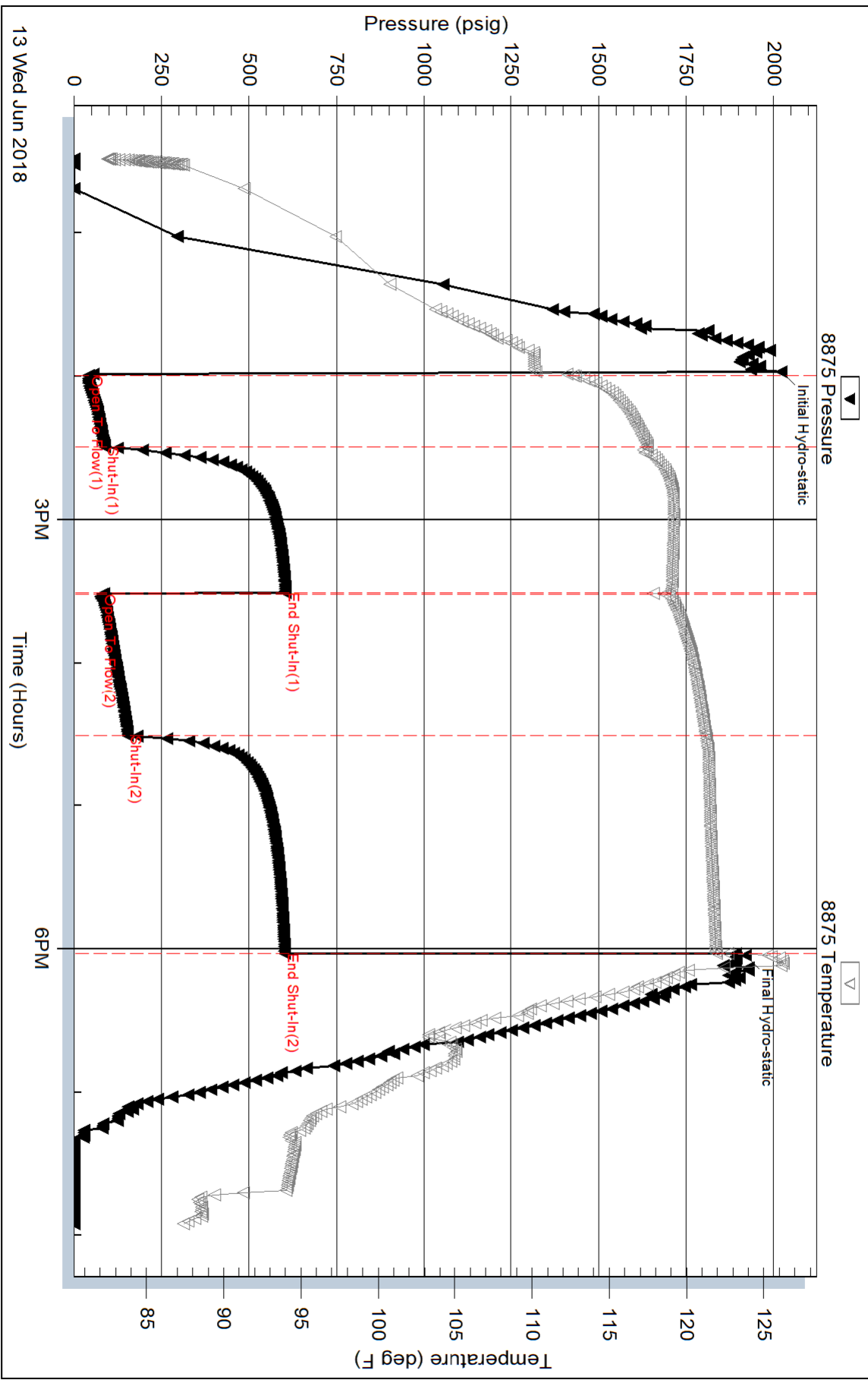
Serial #:

Laboratory Name:

Laboratory Location:

Recovery Comments: Rw was .65 @ 95 degrees

### Pressure vs. Time

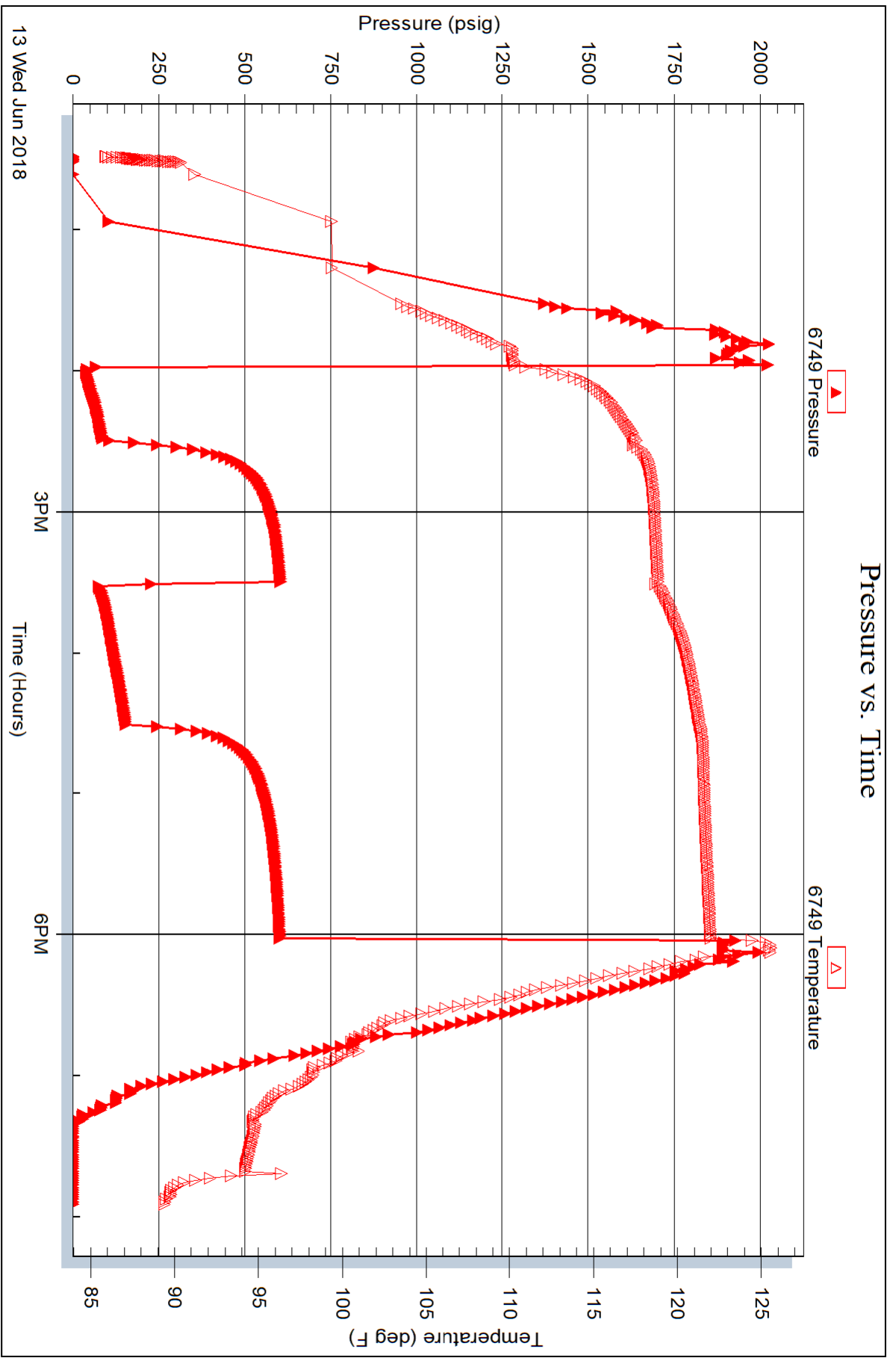


Serial #: 6749

Outside Pckrell Drilling Co

Thissen D 1

DST Test Number: 2



13 Wed Jun 2018

Trilobite Testing, Inc

Ref. No: 63977

Printed: 2018.06.14 @ 05:31:55