



**TRILOBITE  
TESTING, INC.**

# DRILL STEM TEST REPORT

Dixon Operating Co., Inc.

**4-23S-12W Stafford KS**

8100 E 22nd ST  
N. BLDG 300 SUITE 200  
Wichita KS 67226  
ATTN: Bruce Reed

**Edna Mae #1-4**

Job Ticket: 63919

**DST#: 2**

Test Start: 2018.07.23 @ 00:33:00

## GENERAL INFORMATION:

Formation: **LKC 'H-I-J'**  
 Deviated: No Whipstock: ft (KB)  
 Test Type: Conventional Bottom Hole (Reset)  
 Time Tool Opened: 04:05:30  
 Tester: Spencer J. Staab  
 Time Test Ended: 09:46:45  
 Unit No: 84  
 Interval: **3432.00 ft (KB) To 3490.00 ft (KB) (TVD)**  
 Reference Elevations: 1849.00 ft (KB)  
 Total Depth: 3490.00 ft (KB) (TVD)  
 1838.00 ft (CF)  
 Hole Diameter: 7.88 inches  
 Hole Condition: Fair  
 KB to GR/CF: 11.00 ft

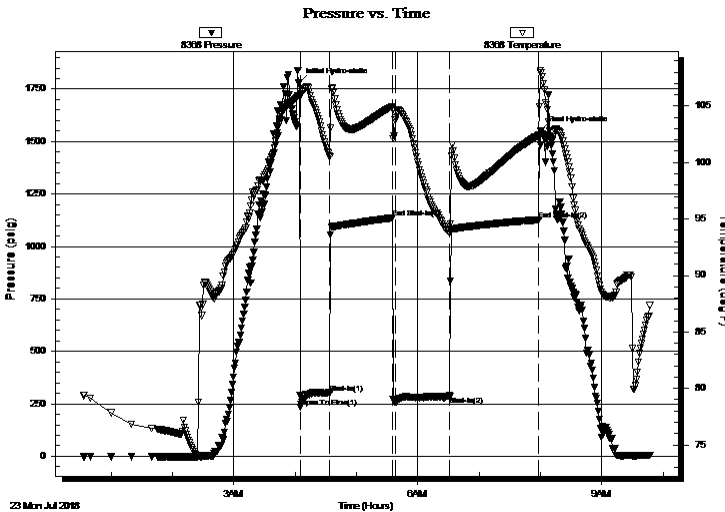
## Serial #: 8368

Inside

Press@RunDepth: 285.56 psig @ 3435.00 ft (KB) Capacity: 8000.00 psig  
 Start Date: 2018.07.23 End Date: 2018.07.23 Last Calib.: 2018.07.23  
 Start Time: 00:33:15 End Time: 09:46:45 Time On Btm: 2018.07.23 @ 04:04:00  
 Time Off Btm: 2018.07.23 @ 08:00:15

**TEST COMMENT:** 30-IF-Strong Blow ; BOB in 10 secs; GTS 1 min  
 60-ISI-Bled Off  
 60-FF-Strong Blow ; BOB instantaneously  
 90-FSI-Bled Off

## PRESSURE SUMMARY



Time (Min.)	Pressure (psig)	Temp (deg F)	Annotation
0	1782.01	105.92	Initial Hydro-static
2	234.65	106.01	Open To Flow (1)
30	300.51	100.54	Shut-In(1)
91	1135.11	104.93	End Shut-In(1)
94	257.59	103.93	Open To Flow (2)
148	285.56	93.74	Shut-In(2)
235	1126.81	102.42	End Shut-In(2)
237	1552.67	107.97	Final Hydro-static

## Recovery

Length (ft)	Description	Volume (bbl)
100.00	GHOCM 30%G 30%O 40%M	0.49
100.00	GOCM 30%G 10%O 60%M	0.84
40.00	GOCM 10%G 10%O 80%M	0.57

\* Recovery from multiple tests

## Gas Rates

	Choke (inches)	Pressure (psig)	Gas Rate (Mcf/d)
First Gas Rate	1.00	25.68	1152.25
Last Gas Rate	1.00	38.45	1519.38
Max. Gas Rate	1.00	41.42	1604.76



**TRILOBITE  
TESTING, INC.**

# DRILL STEM TEST REPORT

Dixon Operating Co., Inc.

8100 E 22nd ST  
N. BLDG 300 SUITE 200  
Wichita KS 67226  
ATTN: Bruce Reed

**4-23S-12W Stafford KS**

**Edna Mae #1-4**

Job Ticket: 63919

**DST#: 2**

Test Start: 2018.07.23 @ 00:33:00

### GENERAL INFORMATION:

Formation: **LKC 'H-I-J'**

Deviated: No Whipstock: ft (KB)

Time Tool Opened: 04:05:30

Time Test Ended: 09:46:45

**Interval: 3432.00 ft (KB) To 3490.00 ft (KB) (TVD)**

Total Depth: 3490.00 ft (KB) (TVD)

Hole Diameter: 7.88 inches Hole Condition: Fair

Test Type: Conventional Bottom Hole (Reset)

Tester: Spencer J. Staab

Unit No: 84

Reference Elevations: 1849.00 ft (KB)

1838.00 ft (CF)

KB to GR/CF: 11.00 ft

**Serial #: 9120 Inside**

Press@RunDepth: psig @ 3435.00 ft (KB)

Start Date: 2018.07.23 End Date: 2018.07.23

Start Time: 00:33:15 End Time: 09:46:45

Capacity: 8000.00 psig

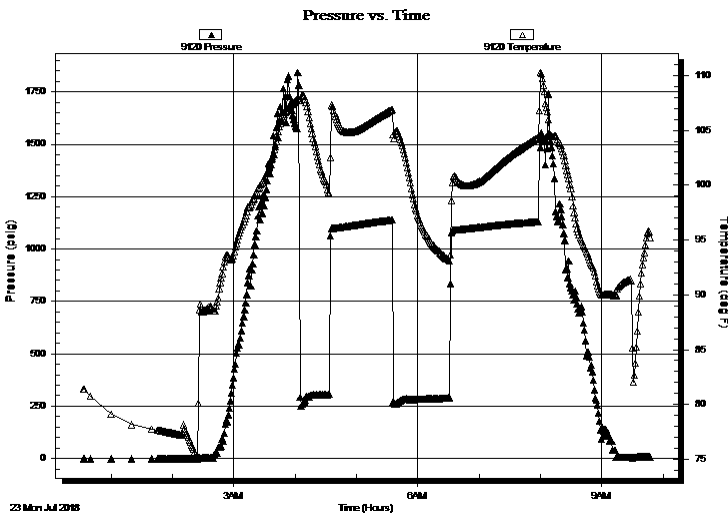
Last Calib.: 2018.07.23

Time On Btm:

Time Off Btm:

**TEST COMMENT:** 30-IF-Strong Blow ; BOB in 10 secs; GTS 1 min  
60-ISI-Bled Off  
60-FF-Strong Blow ; BOB instantaneously  
90-FSI-Bled Off

### PRESSURE SUMMARY



Time (Min.)	Pressure (psig)	Temp (deg F)	Annotation

### Recovery

Length (ft)	Description	Volume (bbl)
100.00	GHOCM 30%G 30%O 40%M	0.49
100.00	GOCM 30%G 10%O 60%M	0.84
40.00	GOCM 10%G 10%O 80%M	0.57

\* Recovery from multiple tests

### Gas Rates

	Choke (inches)	Pressure (psig)	Gas Rate (Mcf/d)
First Gas Rate	1.00	25.68	1152.25
Last Gas Rate	1.00	38.45	1519.38
Max. Gas Rate	1.00	41.42	1604.76



**TRILOBITE  
TESTING, INC.**

# DRILL STEM TEST REPORT

**FLUID SUMMARY**

Dixon Operating Co., Inc.

**4-23S-12W Stafford KS**

8100 E 22nd ST  
N. BLDG 300 SUITE 200  
Wichita KS 67226  
ATTN: Bruce Reed

**Edna Mae #1-4**

Job Ticket: 63919

**DST#: 2**

Test Start: 2018.07.23 @ 00:33:00

## Mud and Cushion Information

Mud Type: Gel Chem

Mud Weight: 9.00 lb/gal

Viscosity: 72.00 sec/qt

Water Loss: 9.59 in<sup>3</sup>

Resistivity: ohm.m

Salinity: 8000.00 ppm

Filter Cake: inches

Cushion Type:

Cushion Length: ft

Cushion Volume: bbl

Gas Cushion Type:

Gas Cushion Pressure: psig

Oil API:

Water Salinity: deg API

ppm

## Recovery Information

Recovery Table

Length ft	Description	Volume bbl
100.00	GHOCM 30%G 30%O 40%M	0.492
100.00	GOCM 30%G 10%O 60%M	0.844
40.00	GOCM 10%G 10%O 80%M	0.567

Total Length: 240.00 ft      Total Volume: 1.903 bbl

Num Fluid Samples: 0

Num Gas Bombs: 0

Serial #:

Laboratory Name:

Laboratory Location:

Recovery Comments: 1#LCM



**TRILOBITE  
TESTING, INC.**

## DRILL STEM TEST REPORT

**GAS RATES**

Dixon Operating Co., Inc.

**4-23S-12W Stafford KS**

8100 E 22nd ST  
N. BLDG 300 SUITE 200  
Wichita KS 67226  
ATTN: Bruce Reed

**Edna Mae #1-4**

Job Ticket: 63919

**DST#: 2**

Test Start: 2018.07.23 @ 00:33:00

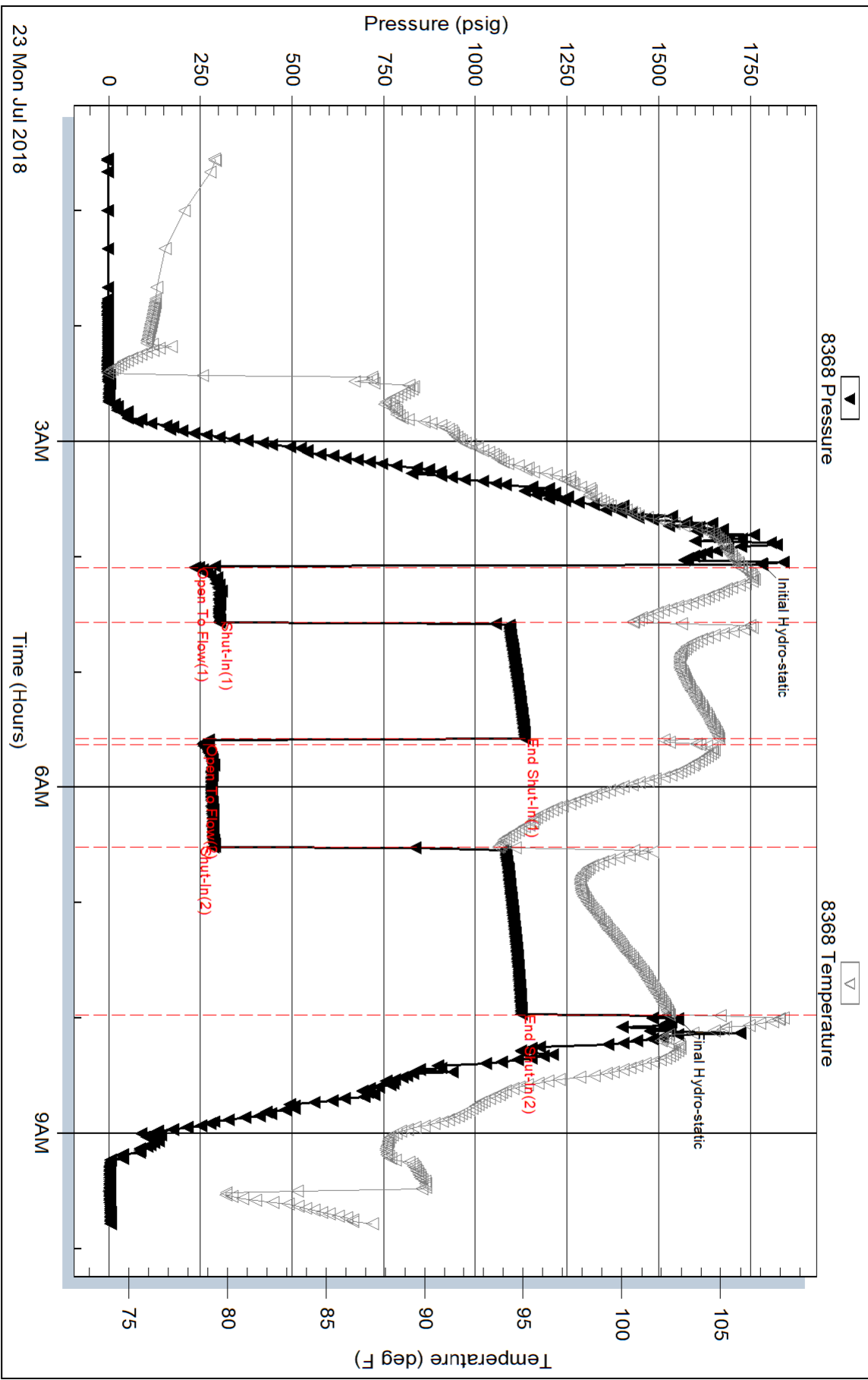
### Gas Rates Information

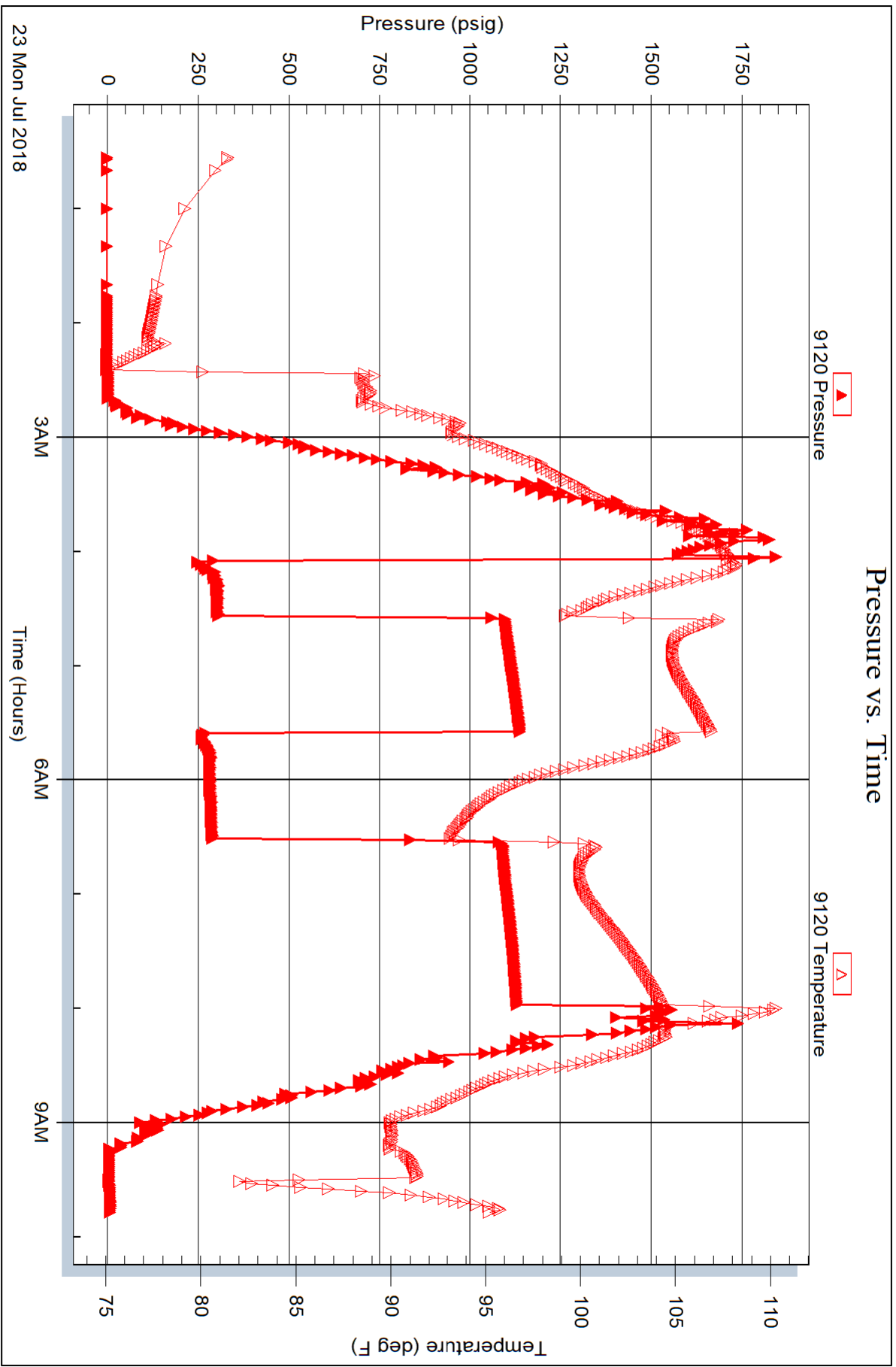
Temperature: 59 (deg F)  
Relative Density: 0.65  
Z Factor: 0.8

Gas Rates Table

Flow Period	Elapsed Time	Choke (inches)	Pressure (psig)	Gas Rate (Mcf/d)
1	5	1.00	25.68	1152.25
1	10	1.00	31.34	1314.97
1	20	1.00	41.42	1604.76
1	30	1.00	41.00	1592.68
2	5	1.00	26.10	1164.33
2	10	1.00	35.88	1445.49
2	20	1.00	39.30	1543.81
2	30	1.00	39.33	1544.67
2	40	1.00	38.88	1531.74
2	50	1.00	38.90	1532.31
2	60	1.00	38.45	1519.38

### Pressure vs. Time





23 Mon Jul 2018

3AM

Time (Hours)

6AM

9AM