



**TRILOBITE TESTING, INC.**

# DRILL STEM TEST REPORT

Berexco, LLC  
 2020 N. Bramblewood  
 Wichita KS 67206+1094  
 ATTN: Jerry Smith

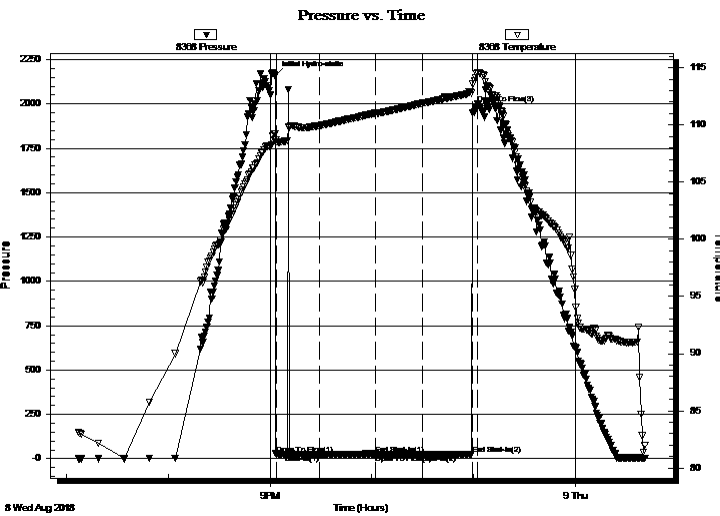
**21-16S-21W Ness KS**  
**Chaff #8**  
 Job Ticket: 64580 **DST#: 3**  
 Test Start: 2018.08.08 @ 19:07:00

## GENERAL INFORMATION:

Formation: **Cherokee 'C' Sand**  
 Deviated: No Whipstock: ft (KB)  
 Time Tool Opened: 21:03:30  
 Time Test Ended: 00:41:00  
 Interval: **4264.00 ft (KB) To 4275.00 ft (KB) (TVD)**  
 Total Depth: 4275.00 ft (KB) (TVD)  
 Hole Diameter: 7.88 inches Hole Condition: Fair  
 Test Type: Conventional Bottom Hole (Reset)  
 Tester: Spencer J. Staab  
 Unit No: 84  
 Reference Elevations: 2343.00 ft (KB)  
 2336.00 ft (CF)  
 KB to GR/CF: 7.00 ft

**Serial #: 8368** **Inside**  
 Press@RunDepth: 22.68 psig @ 4265.00 ft (KB) Capacity: 8000.00 psig  
 Start Date: 2018.08.08 End Date: 2018.08.09 Last Calib.: 2018.08.09  
 Start Time: 19:07:15 End Time: 00:41:00 Time On Btm: 2018.08.08 @ 21:03:00  
 Time Off Btm:

**TEST COMMENT:** 30-IF-Weak Surface; Died; Flushed tool; No Help  
 30-ISI-No Return  
 30-FF-NO Blow  
 30-FSI-No Return



## PRESSURE SUMMARY

Time (Min.)	Pressure (psig)	Temp (deg F)	Annotation
0	2158.37	109.23	Initial Hydro-static
1	27.67	108.69	Open To Flow (1)
26	23.26	109.94	Shut-In(1)
59	27.67	111.03	End Shut-In(1)
60	24.01	111.02	Open To Flow (2)
87	22.68	111.90	Shut-In(2)
116	23.78	112.78	End Shut-In(2)
120	1999.79	114.59	Open To Flow (3)

## Recovery

Length (ft)	Description	Volume (bbl)
10.00	Mud 100%M	0.14

\* Recovery from multiple tests

## Gas Rates

Choke (inches)	Pressure (psig)	Gas Rate (Mcf/d)



