



TRILOBITE TESTING, INC.

DRILL STEM TEST REPORT

Vess oil Corporation
 1700 N Waterfront Parkw ay
 Building 500
 Wichita, Kansas 67206+6619
 ATTN: Roger Martin

21/9S/18W/Rooks

Paradise Creek 3-03

Job Ticket: 63466

DST#: 3

Test Start: 2018.10.04 @ 02:13:00

GENERAL INFORMATION:

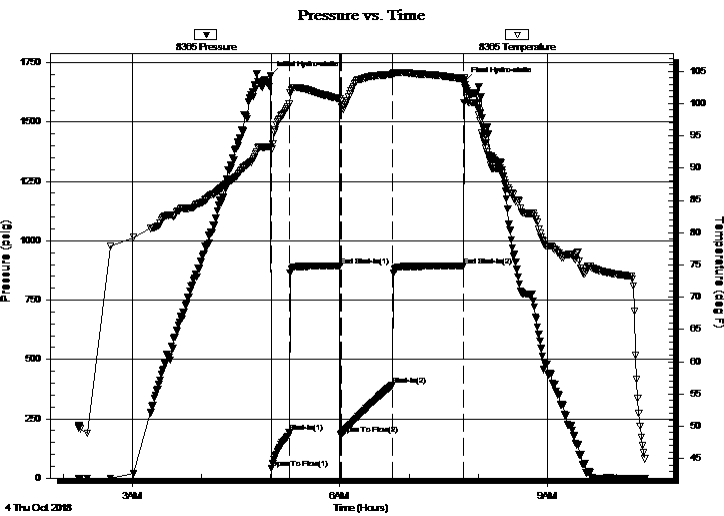
Formation: **Arbuckle**
 Deviated: No Whipstock: ft (KB)
 Time Tool Opened: 05:00:32
 Time Test Ended: 10:25:02
 Interval: **3536.00 ft (KB) To 3577.00 ft (KB) (TVD)**
 Total Depth: 3577.00 ft (KB) (TVD)
 Hole Diameter: 7.80 inches Hole Condition: Fair
 Test Type: Conventional Bottom Hole (Initial)
 Tester: Ken Swinney/ Benny M
 Unit No: 72 Hays/60
 Reference Elevations: 2176.00 ft (KB)
 2169.00 ft (CF)
 KB to GR/CF: 7.00 ft

Serial #: 8365

Inside

Press@RunDepth: 392.98 psig @ 3537.00 ft (KB) Capacity: psig
 Start Date: 2018.10.04 End Date: 2018.10.04 Last Calib.: 2018.10.04
 Start Time: 02:13:01 End Time: 10:25:02 Time On Btm: 2018.10.04 @ 04:59:32
 Time Off Btm: 2018.10.04 @ 07:48:17

TEST COMMENT: I.F. 15 Minutes/ Blow built to BOB in 5 minutes/ Total build 37 inches
 I.S.I. 45 Minutes/ Blow back built an additional 2 inches
 F.F. 45 Minutes/ Blow built to BOB in 6 minutes/ Total build 89 1/2 inches
 F.S.I. 60 Minutes/ Blow back built an additional 2 1/2 inches



PRESSURE SUMMARY

Time (Min.)	Pressure (psig)	Temp (deg F)	Annotation
0	1694.90	93.27	Initial Hydro-static
1	42.06	92.74	Open To Flow (1)
17	191.17	99.90	Shut-In(1)
61	892.90	100.73	End Shut-In(1)
62	183.70	100.33	Open To Flow (2)
107	392.98	104.56	Shut-In(2)
168	892.80	103.73	End Shut-In(2)
169	1670.37	103.71	Final Hydro-static

Recovery

Length (ft)	Description	Volume (bbl)
186.00	Muddy Gasy Oil/ M 20 G 20 O 60	2.61
775.00	Gassy Oil/ Gas 20% Oil 80%	10.87
0.00	155 feet GIP	0.00

Gas Rates

	Choke (inches)	Pressure (psig)	Gas Rate (Mcf/d)



TRILOBITE TESTING, INC.

DRILL STEM TEST REPORT

Vess oil Corporation
 1700 N Waterfront Parkw ay
 Building 500
 Wichita, Kansas 67206+6619
 ATTN: Roger Martin

21/9S/18W/Rooks

Paradise Creek 3-03

Job Ticket: 63466

DST#: 3

Test Start: 2018.10.04 @ 02:13:00

GENERAL INFORMATION:

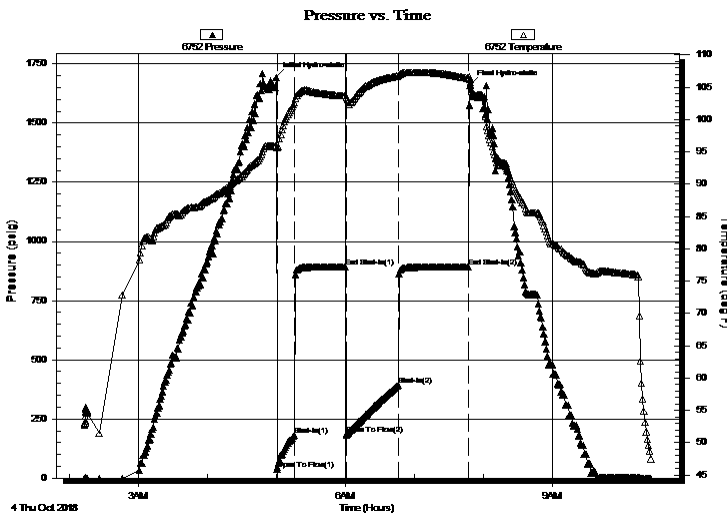
Formation: **Arbuckle**
 Deviated: No Whipstock: ft (KB)
 Time Tool Opened: 05:00:32
 Time Test Ended: 10:25:02
 Interval: **3536.00 ft (KB) To 3577.00 ft (KB) (TVD)**
 Total Depth: 3577.00 ft (KB) (TVD)
 Hole Diameter: 7.80 inches Hole Condition: Fair
 Test Type: Conventional Bottom Hole (Initial)
 Tester: Ken Swinney/ Benny M
 Unit No: 72 Hays/60
 Reference Elevations: 2176.00 ft (KB)
 2169.00 ft (CF)
 KB to GR/CF: 7.00 ft

Serial #: 6752 Outside

Press@RunDepth: 891.68 psig @ 3538.00 ft (KB) Capacity: psig
 Start Date: 2018.10.04 End Date: 2018.10.04 Last Calib.: 2018.10.04
 Start Time: 02:13:01 End Time: 10:26:02 Time On Btm: 2018.10.04 @ 05:00:02
 Time Off Btm: 2018.10.04 @ 07:48:32

TEST COMMENT: I.F. 15 Minutes/ Blow built to BOB in 5 minutes/ Total build 37 inches
 I.S.I. 45 Minutes/ Blow back built an additional 2 inches
 F.F. 45 Minutes/ Blow built to BOB in 6 minutes/ Total build 89 1/2 inches
 F.S.I. 60 Minutes/ Blow back built an additional 2 1/2 inches

PRESSURE SUMMARY



Time (Min.)	Pressure (psig)	Temp (deg F)	Annotation
0	1694.64	95.92	Initial Hydro-static
1	38.25	95.64	Open To Flow (1)
16	181.29	102.68	Shut-In(1)
60	891.72	103.65	End Shut-In(1)
61	183.52	103.42	Open To Flow (2)
106	392.03	106.76	Shut-In(2)
168	891.68	106.36	End Shut-In(2)
169	1661.39	106.22	Final Hydro-static

Recovery

Length (ft)	Description	Volume (bbl)
186.00	Muddy Gasy Oil/ M 20 G 20 O 60	2.61
775.00	Gassy Oil/ Gas 20% Oil 80%	10.87
0.00	155 feet GIP	0.00

Gas Rates

	Choke (inches)	Pressure (psig)	Gas Rate (Mcf/d)



**TRILOBITE
TESTING, INC.**

DRILL STEM TEST REPORT

FLUID SUMMARY

Vess oil Corporation

21/9S/18W/Rooks

1700 N Waterfront Parkway
Building 500
Wichita, Kansas 67206+6619
ATTN: Roger Martin

Paradise Creek 3-03

Job Ticket: 63466

DST#: 3

Test Start: 2018.10.04 @ 02:13:00

Mud and Cushion Information

Mud Type: Gel Chem
Mud Weight: 9.00 lb/gal
Viscosity: 60.00 sec/qt
Water Loss: 5.80 in³
Resistivity: ohm.m
Salinity: 1600.00 ppm
Filter Cake: 1.00 inches

Cushion Type:
Cushion Length: ft
Cushion Volume: bbl
Gas Cushion Type:
Gas Cushion Pressure: psig

Oil API: 24 deg API
Water Salinity: ppm

Recovery Information

Recovery Table

Length ft	Description	Volume bbl
186.00	Muddy Gasy Oil/ M 20 G 20 O 60	2.609
775.00	Gassy Oil/ Gas 20% Oil 80%	10.871
0.00	155 feet GIP	0.000

Total Length: 961.00 ft Total Volume: 13.480 bbl

Num Fluid Samples: 0

Num Gas Bombs: 0

Serial #:

Laboratory Name:

Laboratory Location:

Recovery Comments: Tool Fluid Sample 20% Mud 80% Oil

Serial #: 8365

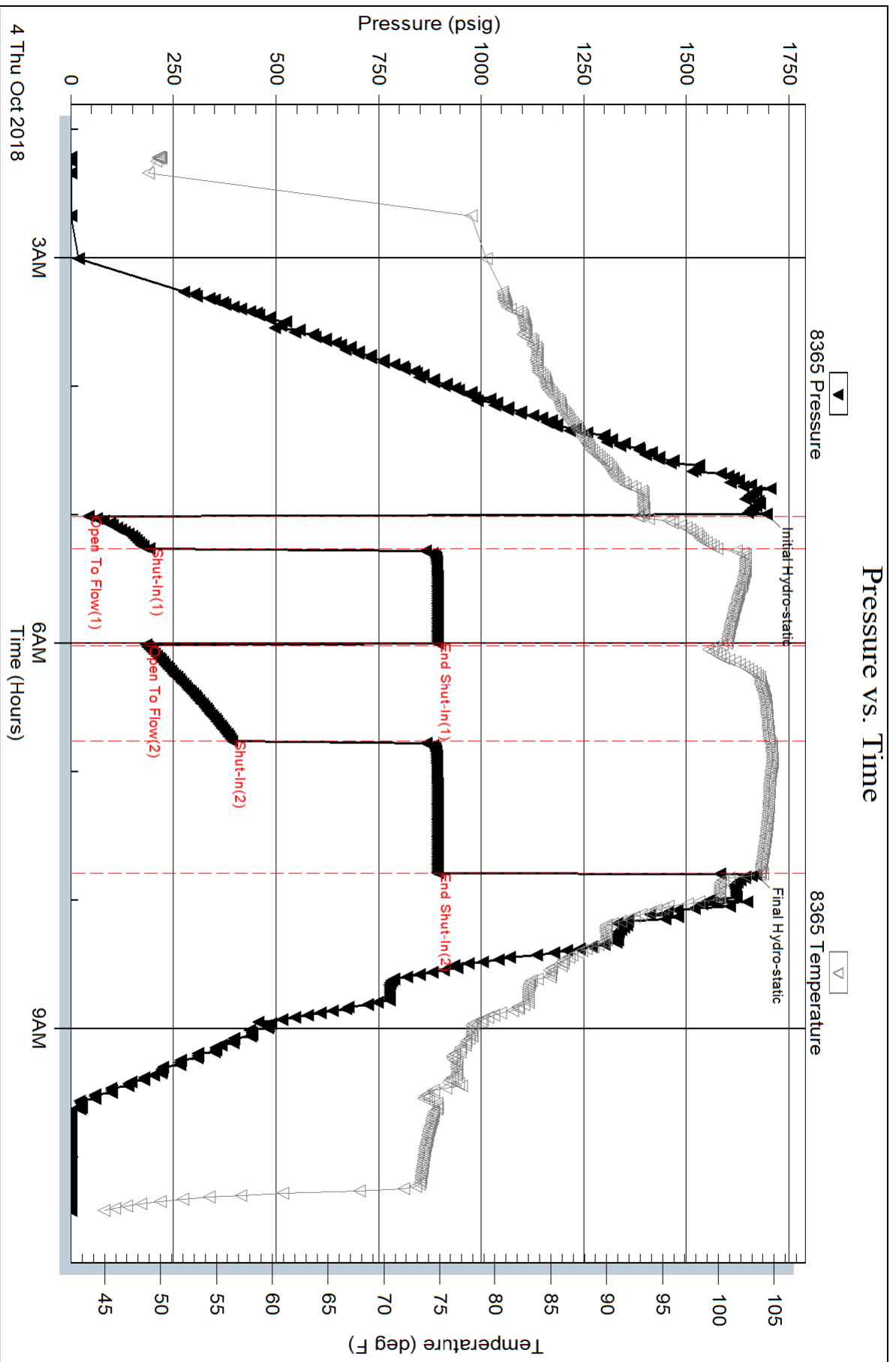
Inside

Vess oil Corporation

Paradise Creek 3-03

DST Test Number: 3

Pressure vs. Time



Pressure vs. Time

