

DRILL STEM TEST REPORT

Prepared For: **FG Holl Company LLC**

9431 East Central
Suite 100
Wichita, Kansas 67206+2563

ATTN: Frank Greenbaum

Price Trust 1-28

28/20S/19W/Pawnee

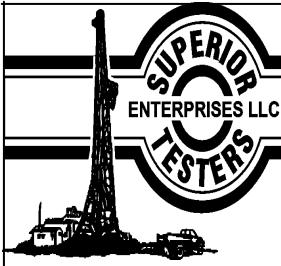
Start Date: 2012.01.31 @ 02:08:00

End Date: 2012.01.31 @ 09:51:30

Job Ticket #: 17151 DST #: 6

Superior Testers Enterprises LLC
PO Box 138 Great Bend KS 67530
1-800-792-6902

Printed: 2012.01.31 @ 08:11:45



DRILL STEM TEST REPORT

FG Holl Company LLC
 9431 East Central
 Suite 100
 Wichita, Kansas 67206+2563
 ATTN: Frank Greenbaum

28/20S/19W/Pawnee

Price Trust 1-28

Job Ticket: 17151 **DST#: 6**
 Test Start: 2012.01.31 @ 02:08:00

GENERAL INFORMATION:

Formation: **Mississippi Chert**
 Deviated: No Whipstock: ft (KB)
 Time Tool Opened: 04:34:00
 Time Test Ended: 09:51:30
 Interval: **4235.00 ft (KB) To 4262.00 ft (KB) (TVD)**
 Total Depth: 4262.00 ft (KB) (TVD)
 Hole Diameter: 7.88 inches Hole Condition: Fair
 Test Type: Conventional Bottom Hole (Initial)
 Tester: Ken Swinney
 Unit No: 3325 Great Bend/100
 Reference Elevations: 2190.00 ft (KB)
 2182.00 ft (CF)
 KB to GR/CF: 8.00 ft

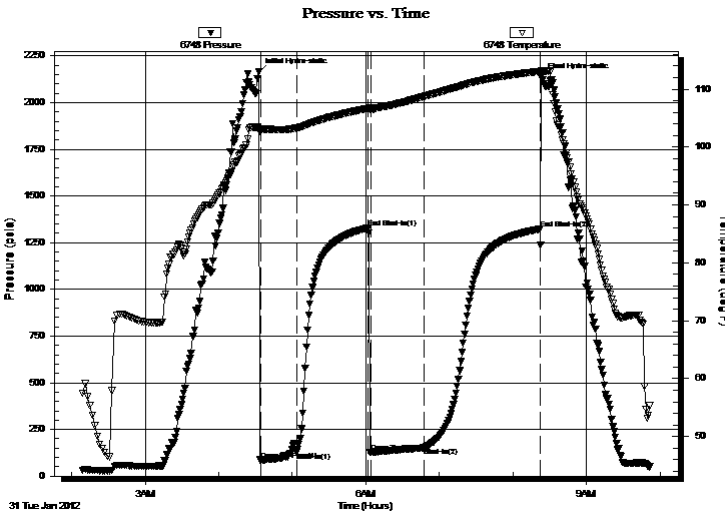
Serial #: 6748

Inside

Press @ Run Depth: 151.88 psia @ 4258.00 ft (KB) Capacity: 5000.00 psia
 Start Date: 2012.01.31 End Date: 2012.01.31 Last Calib.: 2012.01.31
 Start Time: 02:08:00 End Time: 09:51:30 Time On Btm: 2012.01.31 @ 04:32:30
 Time Off Btm: 2012.01.31 @ 08:23:00

TEST COMMENT: 1ST Open 30 Minutes/Fair blow/Blow built to 4 1/2 inches
 1ST Shut In 60 Minutes/No blow back
 2ND Open 45 Minutes/Fair blow/Blow built to 4 inches
 2ND Shut In 90 Minutes/No blow back

PRESSURE SUMMARY



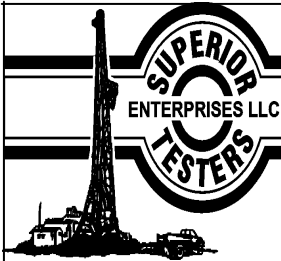
Time (Min.)	Pressure (psia)	Temp (deg F)	Annotation
0	2163.22	103.06	Initial Hydro-static
2	87.18	102.84	Open To Flow (1)
31	127.22	103.26	Shut-In(1)
90	1329.73	106.68	End Shut-In(1)
92	128.02	106.45	Open To Flow (2)
135	151.88	108.72	Shut-In(2)
230	1323.19	113.05	End Shut-In(2)
231	2132.86	113.23	Final Hydro-static

Recovery

Length (ft)	Description	Volume (bbl)
3.00	Clean oil 100%	0.04
85.00	Slightly oil cut w atery mud	1.24
0.00	3% oil/ 27% w ater/ 70% mud	0.00
0.00	Recovery chlorides 12000 ppm	0.00

Gas Rates

	Choke (inches)	Pressure (psia)	Gas Rate (Mcf/d)



DRILL STEM TEST REPORT

FG Holl Company LLC

28/20S/19W/Pawnee

9431 East Central
Suite 100
Wichita, Kansas 67206+2563
ATTN: Frank Greenbaum

Price Trust 1-28

Job Ticket: 17151

DST#: 6

Test Start: 2012.01.31 @ 02:08:00

GENERAL INFORMATION:

Formation: **Mississippi Chert**

Deviated: No Whipstock: ft (KB)

Time Tool Opened: 04:34:00

Time Test Ended: 09:51:30

Interval: 4235.00 ft (KB) To 4262.00 ft (KB) (TVD)

Total Depth: 4262.00 ft (KB) (TVD)

Hole Diameter: 7.88 inches Hole Condition: Fair

Test Type: Conventional Bottom Hole (Initial)

Tester: Ken Swinney

Unit No: 3325 Great Bend/100

Reference Elevations: 2190.00 ft (KB)

2182.00 ft (CF)

KB to GR/CF: 8.00 ft

Serial #: 6749 Outside

Press @ Run Depth: 1240.33 psia @ 4259.00 ft (KB)

Start Date: 2012.01.31

End Date: 2012.01.31

Start Time: 02:08:00

End Time: 09:52:00

Capacity: 5000.00 psia

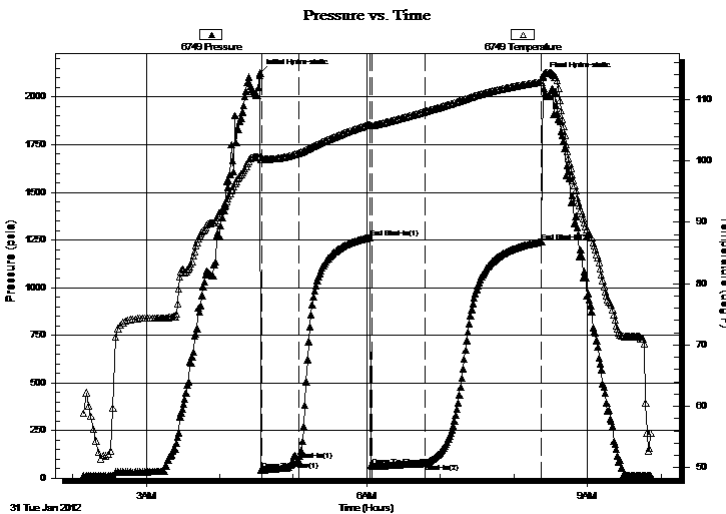
Last Calib.: 2012.01.31

Time On Btm: 2012.01.31 @ 04:33:00

Time Off Btm: 2012.01.31 @ 08:23:30

TEST COMMENT: 1ST Open 30 Minutes/Fair blow/Blow built to 4 1/2 inches
1ST Shut In 60 Minutes/No blow back
2ND Open 45 Minutes/Fair blow/Blow built to 4 inches
2ND Shut In 90 Minutes/No blow back

PRESSURE SUMMARY



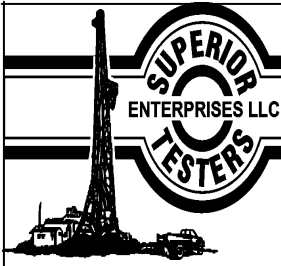
Time (Min.)	Pressure (psia)	Temp (deg F)	Annotation
0	2125.26	100.72	Initial Hydro-static
2	42.73	100.27	Open To Flow (1)
32	93.92	101.25	Shut-In(1)
90	1263.32	105.94	End Shut-In(1)
91	60.32	105.72	Open To Flow (2)
135	77.46	108.02	Shut-In(2)
230	1240.33	112.86	End Shut-In(2)
231	2104.83	113.79	Final Hydro-static

Recovery

Length (ft)	Description	Volume (bbl)
3.00	Clean oil 100%	0.04
85.00	Slightly oil cut w atery mud	1.24
0.00	3% oil/ 27% w ater/ 70% mud	0.00
0.00	Recovery chlorides 12000 ppm	0.00

Gas Rates

	Choke (inches)	Pressure (psia)	Gas Rate (Mcf/d)



DRILL STEM TEST REPORT

TOOL DIAGRAM

FG Holl Company LLC

28/20S/19W/Pawnee

9431 East Central
Suite 100
Wichita, Kansas 67206+2563
ATTN: Frank Greenbaum

Price Trust 1-28

Job Ticket: 17151

DST#: 6

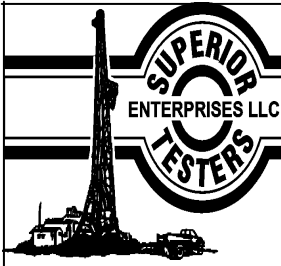
Test Start: 2012.01.31 @ 02:08:00

Tool Information

Drill Pipe:	Length: 4238.00 ft	Diameter: 3.88 inches	Volume: 61.98 bbl	Tool Weight: 2000.00 lb
Heavy Wt. Pipe:	Length: 0.00 ft	Diameter: 0.00 inches	Volume: 0.00 bbl	Weight set on Packer: 20000.00 lb
Drill Collar:	Length: 0.00 ft	Diameter: 0.00 inches	Volume: 0.00 bbl	Weight to Pull Loose: 52000.00 lb
		Total Volume: 61.98 bbl		Tool Chased 0.00 ft
Drill Pipe Above KB:	30.00 ft			String Weight: Initial 41000.00 lb
Depth to Top Packer:	4235.00 ft			Final 44000.00 lb
Depth to Bottom Packer:	ft			
Interval between Packers:	27.00 ft			
Tool Length:	54.00 ft			
Number of Packers:	2	Diameter: 6.75 inches		

Tool Comments:

Tool Description	Length (ft)	Serial No.	Position	Depth (ft)	Accum. Lengths
Shut In Tool	5.00			4213.00	
Hydraulic Tool	5.00			4218.00	
Jars	5.00			4223.00	
Safety Joint	2.00			4225.00	
Packer	5.00			4230.00	27.00 Bottom Of Top Packer
Packer	5.00			4235.00	
Anchor	22.00			4257.00	
Recorder	1.00	6748	Inside	4258.00	
Recorder	1.00	6749	Outside	4259.00	
Bullnose	3.00			4262.00	27.00 Bottom Packers & Anchor
Total Tool Length:	54.00				



DRILL STEM TEST REPORT

FLUID SUMMARY

FG Holl Company LLC

28/20S/19W/Pawnee

9431 East Central
Suite 100
Wichita, Kansas 67206+2563
ATTN: Frank Greenbaum

Price Trust 1-28

Job Ticket: 17151

DST#: 6

Test Start: 2012.01.31 @ 02:08:00

Mud and Cushion Information

Mud Type: Gel Chem
Mud Weight: 9.00 lb/gal
Viscosity: 53.00 sec/qt
Water Loss: 7.60 in³
Resistivity: ohm.m
Salinity: 3700.00 ppm
Filter Cake: 1.00 inches

Cushion Type:
Cushion Length: ft
Cushion Volume: bbl
Gas Cushion Type:
Gas Cushion Pressure: psia

Oil API: deg API
Water Salinity: ppm

Recovery Information

Recovery Table

Length ft	Description	Volume bbl
3.00	Clean oil 100%	0.044
85.00	Slightly oil cut watery mud	1.243
0.00	3% oil/ 27% water/ 70% mud	0.000
0.00	Recovery chlorides 12000 ppm	0.000

Total Length: 88.00 ft Total Volume: 1.287 bbl

Num Fluid Samples: 0

Num Gas Bombs: 0

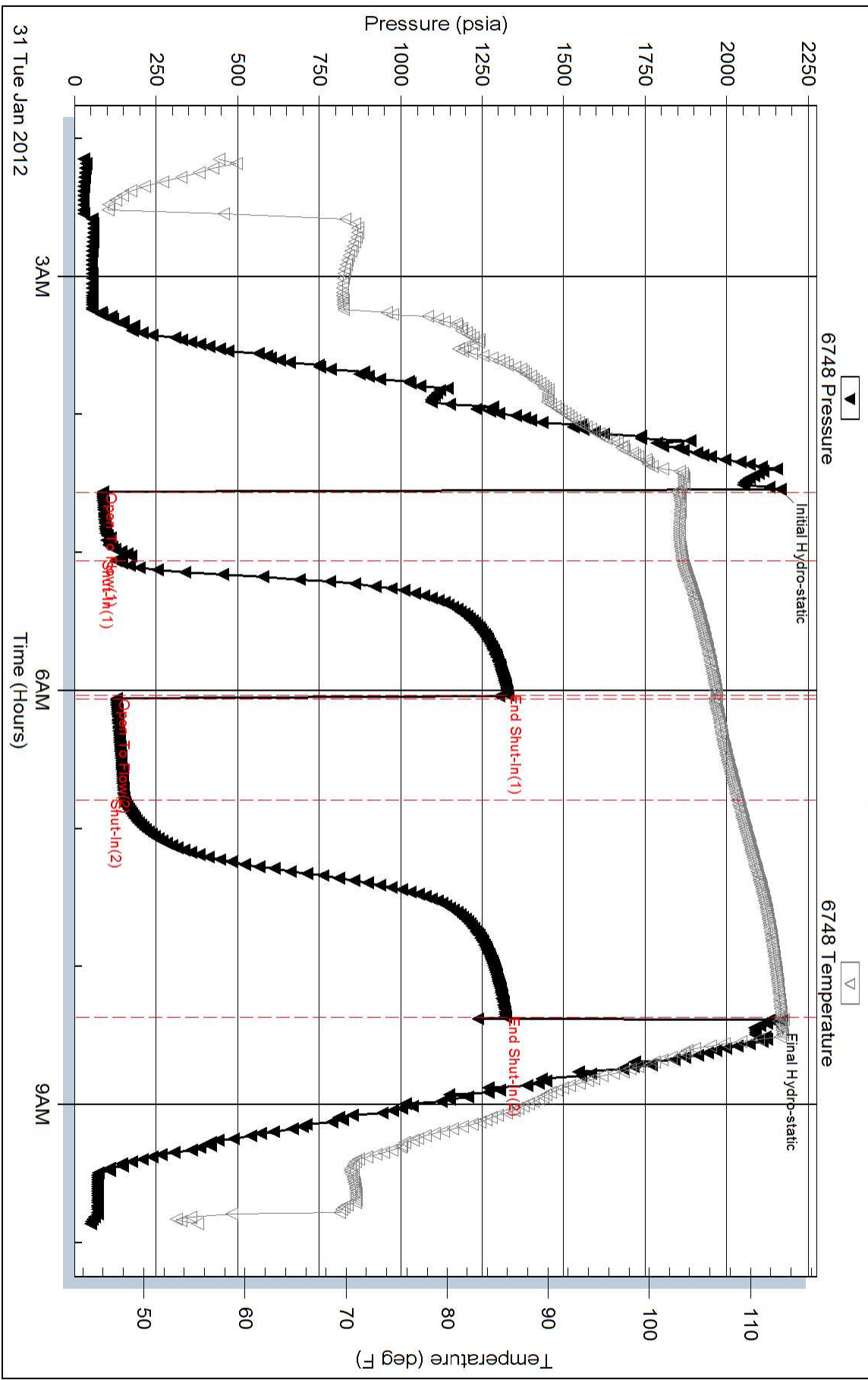
Serial #:

Laboratory Name:

Laboratory Location:

Recovery Comments:

Pressure vs. Time



Pressure vs. Time

