



TRILOBITE TESTING, INC.

DRILL STEM TEST REPORT

Cholla Production LLC
 7851 S Elati Ste 201
 Littleton, Colo
 80120
 ATTN: Bill Goff

29-19s-33w Scott, Ks

Bontreger RT #1-29

Job Ticket: 49883

DST#: 3

Test Start: 2012.11.07 @ 23:45:54

GENERAL INFORMATION:

Formation: **Morrow**

Deviated: No Whipstock: 0.00 ft (KB)

Time Tool Opened: 02:12:24

Time Test Ended: 08:05:54

Test Type: Conventional Bottom Hole (Reset)

Tester: Shane McBride

Unit No: 55

Interval: 4635.00 ft (KB) To 4687.00 ft (KB) (TVD)

Reference Elevations: 2990.00 ft (KB)

Total Depth: 4687.00 ft (KB) (TVD)

2985.00 ft (CF)

Hole Diameter: 7.88 inches Hole Condition: Fair

KB to GR/CF: 5.00 ft

Serial #: 8368 Outside

Press @ Run Depth: 77.79 psig @ 4636.00 ft (KB)

Capacity: 8000.00 psig

Start Date: 2012.11.07

End Date: 2012.11.08

Last Calib.: 2012.11.08

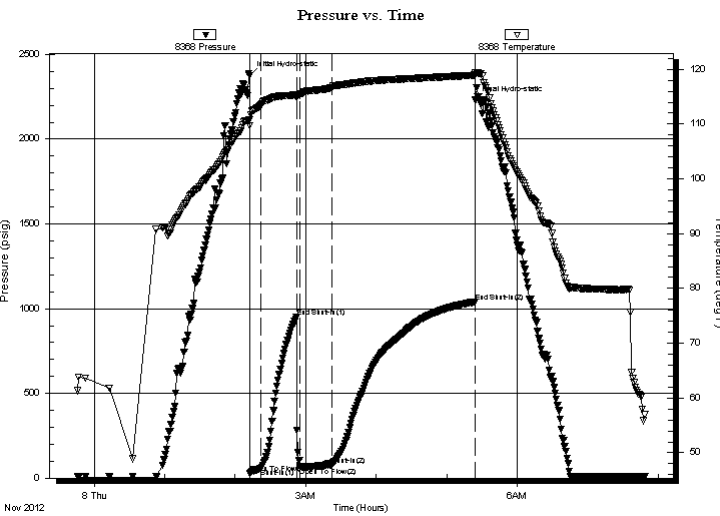
Start Time: 23:45:54

End Time: 07:48:54

Time On Btm: 2012.11.08 @ 02:12:09

Time Off Btm: 2012.11.08 @ 05:24:24

TEST COMMENT: 3" in blow
 No return
 B.O.B. in 18 min.
 1 1/2" in return blow



PRESSURE SUMMARY

Time (Min.)	Pressure (psig)	Temp (deg F)	Annotation
0	2375.94	110.78	Initial Hydro-static
1	27.87	109.68	Open To Flow (1)
10	55.56	113.45	Shut-In(1)
40	949.55	115.31	End Shut-In(1)
43	66.74	115.24	Open To Flow (2)
70	77.79	116.66	Shut-In(2)
192	1040.05	118.94	End Shut-In(2)
193	2229.66	119.43	Final Hydro-static

Recovery

Length (ft)	Description	Volume (bbl)
60.00	s g m c o 5g 15m 80o	0.30
90.00	s g o c m 5g 20o 75m	0.68
0.00	100% very weak gas in pipe	0.00

* Recovery from multiple tests

Gas Rates

Choke (inches)	Pressure (psig)	Gas Rate (Mcf/d)



**TRILOBITE
TESTING, INC.**

DRILL STEM TEST REPORT

FLUID SUMMARY

Cholla Production LLC

29-19s-33w Scott, Ks

7851 S Elati Ste 201
Littleton, Colo
80120
ATTN: Bill Goff

Bontreger RT #1-29

Job Ticket: 49883

DST#: 3

Test Start: 2012.11.07 @ 23:45:54

Mud and Cushion Information

Mud Type: Gel Chem

Cushion Type:

Oil API:

0 deg API

Mud Weight: 9.00 lb/gal

Cushion Length:

ft

Water Salinity:

0 ppm

Viscosity: 52.00 sec/qt

Cushion Volume:

bbbl

Water Loss: 7.97 in³

Gas Cushion Type:

Resistivity: 0.00 ohm.m

Gas Cushion Pressure:

psig

Salinity: 6000.00 ppm

Filter Cake: 1.00 inches

Recovery Information

Recovery Table

Length ft	Description	Volume bbl
60.00	s g m c o 5g 15m 80o	0.295
90.00	s g o c m 5g 20o 75m	0.679
0.00	100'very weak gas in pipe	0.000

Total Length: 150.00 ft Total Volume: 0.974 bbl

Num Fluid Samples: 0

Num Gas Bombs: 0

Serial #:

Laboratory Name:

Laboratory Location:

Recovery Comments: sampler 1000ml oil 300ml mud 1.3 cubic ft gas 500 psi

