



DRILL STEM TEST REPORT

Prepared For: **CMX Inc**

1700 N Waterfront Bldg 3B
Wichita, KS 67206

ATTN: Ken LeBlanc

Wushox #1

11-24S-3E Harvey

Start Date: 2012.11.29 @ 11:38:56

End Date: 2012.11.29 @ 19:58:56

Job Ticket #: 49637 DST #: 1

Trilobite Testing, Inc
PO Box 362 Hays, KS 67601
ph: 785-625-4778 fax: 785-625-5620

Printed: 2012.12.03 @ 10:49:29

CMX Inc
11-24S-3E Harvey
Wushox #1
DST # 1
KC Drum
2012.11.29



**TRILOBITE
TESTING, INC.**

DRILL STEM TEST REPORT

CMX Inc
1700 N Waterfront Bldg 3B
Wichita, KS 67206
ATTN: Ken LeBlanc

11-24S-3E Harvey
Wushox #1
Job Ticket: 49637 **DST#: 1**
Test Start: 2012.11.29 @ 11:38:56

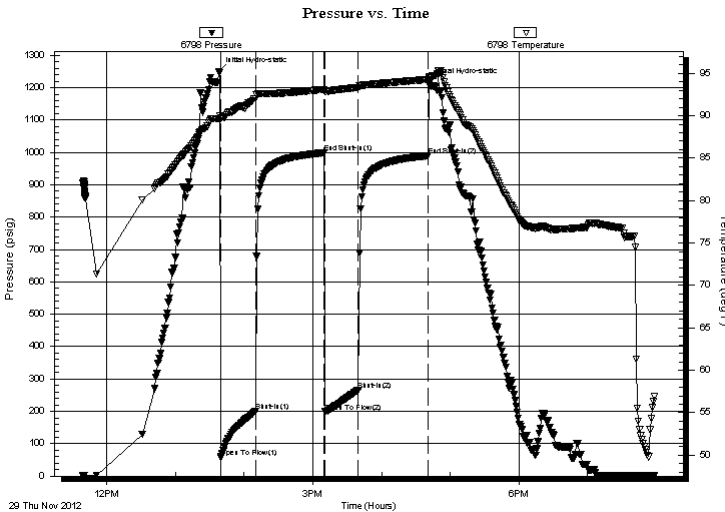
GENERAL INFORMATION:

Formation: **KC Drum**
Deviated: No Whipstock: ft (KB)
Time Tool Opened: 13:39:26
Time Test Ended: 19:58:56
Interval: **2416.00 ft (KB) To 2500.00 ft (KB) (TVD)**
Total Depth: 2500.00 ft (KB) (TVD)
Hole Diameter: 7.88 inches Hole Condition: Good
Test Type: Conventional Bottom Hole (Initial)
Tester: Leal Cason
Unit No: 45
Reference Elevations: 1445.00 ft (KB)
1439.00 ft (CF)
KB to GR/CF: 6.00 ft

Serial #: 6798 Inside
Press @ Run Depth: 265.78 psig @ 2417.00 ft (KB) Capacity: 8000.00 psig
Start Date: 2012.11.29 End Date: 2012.11.29 Last Calib.: 2012.11.29
Start Time: 11:38:57 End Time: 19:58:56 Time On Btm: 2012.11.29 @ 13:37:41
Time Off Btm: 2012.11.29 @ 16:42:11

TEST COMMENT: IF: Strong Blow , BOB in 8 minutes
IS: No Blow Back
FF: Fair Blow , BOB in 11 minutes
FS: No Blow Back

PRESSURE SUMMARY



Time (Min.)	Pressure (psig)	Temp (deg F)	Annotation
0	1250.43	89.65	Initial Hydro-static
2	57.11	89.72	Open To Flow (1)
32	200.78	91.99	Shut-In(1)
92	998.41	93.10	End Shut-In(1)
93	198.60	92.88	Open To Flow (2)
122	265.78	93.34	Shut-In(2)
183	989.71	94.29	End Shut-In(2)
185	1215.26	94.55	Final Hydro-static

Recovery

Length (ft)	Description	Volume (bbl)
148.00	OCW 5%O 95%W	0.73
62.00	OMCW 5%O 10%M 85%W	0.48
30.00	MWCO 10%M 25%W 65%O	0.31
270.00	SOCM 2%O 98%M	2.77

Gas Rates

	Choke (inches)	Pressure (psig)	Gas Rate (Mcf/d)



TRILOBITE TESTING, INC.

DRILL STEM TEST REPORT

CMX Inc
 1700 N Waterfront Bldg 3B
 Wichita, KS 67206
 ATTN: Ken LeBlanc

11-24S-3E Harvey
Wushox #1
 Job Ticket: 49637 **DST#: 1**
 Test Start: 2012.11.29 @ 11:38:56

GENERAL INFORMATION:

Formation: **KC Drum**
 Deviated: No Whipstock: ft (KB)
 Time Tool Opened: 13:39:26
 Time Test Ended: 19:58:56
 Interval: **2416.00 ft (KB) To 2500.00 ft (KB) (TVD)**
 Total Depth: 2500.00 ft (KB) (TVD)
 Hole Diameter: 7.88 inches Hole Condition: Good
 Test Type: Conventional Bottom Hole (Initial)
 Tester: Leal Cason
 Unit No: 45
 Reference Elevations: 1445.00 ft (KB)
 1439.00 ft (CF)
 KB to GR/CF: 6.00 ft

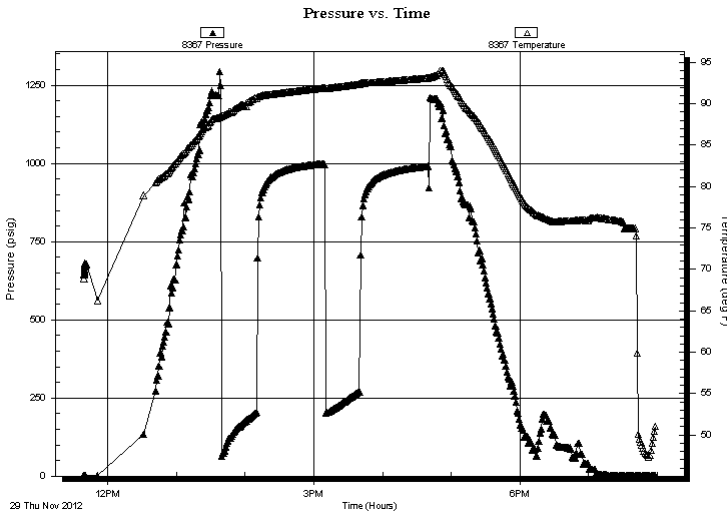
Serial #: 8367

Outside

Press @ Run Depth: psig @ 2417.00 ft (KB) Capacity: 8000.00 psig
 Start Date: 2012.11.29 End Date: 2012.11.29 Last Calib.: 2012.11.29
 Start Time: 11:38:57 End Time: 19:58:56 Time On Btm:
 Time Off Btm:

TEST COMMENT: IF: Strong Blow , BOB in 8 minutes
 IS: No Blow Back
 FF: Fair Blow , BOB in 11 minutes
 FS: No Blow Back

PRESSURE SUMMARY



Time (Min.)	Pressure (psig)	Temp (deg F)	Annotation

Recovery

Length (ft)	Description	Volume (bbl)
148.00	OCW 5%O 95%W	0.73
62.00	OMCW 5%O 10%M 85%W	0.48
30.00	MWCO 10%M 25%W 65%O	0.31
270.00	SOCM 2%O 98%M	2.77

Gas Rates

Choke (inches)	Pressure (psig)	Gas Rate (Mcf/d)



**TRILOBITE
TESTING, INC.**

DRILL STEM TEST REPORT

TOOL DIAGRAM

CMX Inc
1700 N Waterfront Bldg 3B
Wichita, KS 67206
ATTN: Ken LeBlanc

11-24S-3E Harvey
Wushox #1
Job Ticket: 49637 **DST#: 1**
Test Start: 2012.11.29 @ 11:38:56

Tool Information

Drill Pipe:	Length: 2239.00 ft	Diameter: 3.25 inches	Volume: 22.97 bbl	Tool Weight: 2100.00 lb
Heavy Wt. Pipe:	Length: 0.00 ft	Diameter: 0.00 inches	Volume: 0.00 bbl	Weight set on Packer: 25000.00 lb
Drill Collar:	Length: 178.00 ft	Diameter: 2.25 inches	Volume: 0.88 bbl	Weight to Pull Loose: 40000.00 lb
			<u>Total Volume: 23.85 bbl</u>	Tool Chased ft
Drill Pipe Above KB:	23.00 ft			String Weight: Initial 35000.00 lb
Depth to Top Packer:	2416.00 ft			Final 36000.00 lb
Depth to Bottom Packer:	ft			
Interval between Packers:	84.00 ft			
Tool Length:	106.00 ft			
Number of Packers:	2	Diameter: 6.75 inches		

Tool Comments:

Tool Description	Length (ft)	Serial No.	Position	Depth (ft)	Accum. Lengths
-------------------------	--------------------	-------------------	-----------------	-------------------	-----------------------

Shut In Tool	5.00			2399.00	
Hydraulic tool	5.00			2404.00	
Safety Joint	2.00			2406.00	
Packer	5.00			2411.00	22.00 Bottom Of Top Packer
Packer	5.00			2416.00	
Stubb	1.00			2417.00	
Recorder	0.00	6798	Inside	2417.00	
Recorder	0.00	8367	Outside	2417.00	
Perforations	5.00			2422.00	
Change Over Sub	1.00			2423.00	
Drill Pipe	63.00			2486.00	
Change Over Sub	1.00			2487.00	
Perforations	10.00			2497.00	
Bullnose	3.00			2500.00	84.00 Bottom Packers & Anchor

Total Tool Length: 106.00



**TRILOBITE
TESTING, INC.**

DRILL STEM TEST REPORT

FLUID SUMMARY

CMX Inc
1700 N Waterfront Bldg 3B
Wichita, KS 67206
ATTN: Ken LeBlanc

11-24S-3E Harvey
Wushox #1
Job Ticket: 49637 **DST#: 1**
Test Start: 2012.11.29 @ 11:38:56

Mud and Cushion Information

Mud Type: Gel Chem	Cushion Type:	Oil API:	deg API
Mud Weight: 9.00 lb/gal	Cushion Length: ft	Water Salinity:	28000 ppm
Viscosity: 50.00 sec/qt	Cushion Volume: bbl		
Water Loss: 9.59 in ³	Gas Cushion Type:		
Resistivity: ohm.m	Gas Cushion Pressure: psig		
Salinity: 1600.00 ppm			
Filter Cake: 0.02 inches			

Recovery Information

Recovery Table

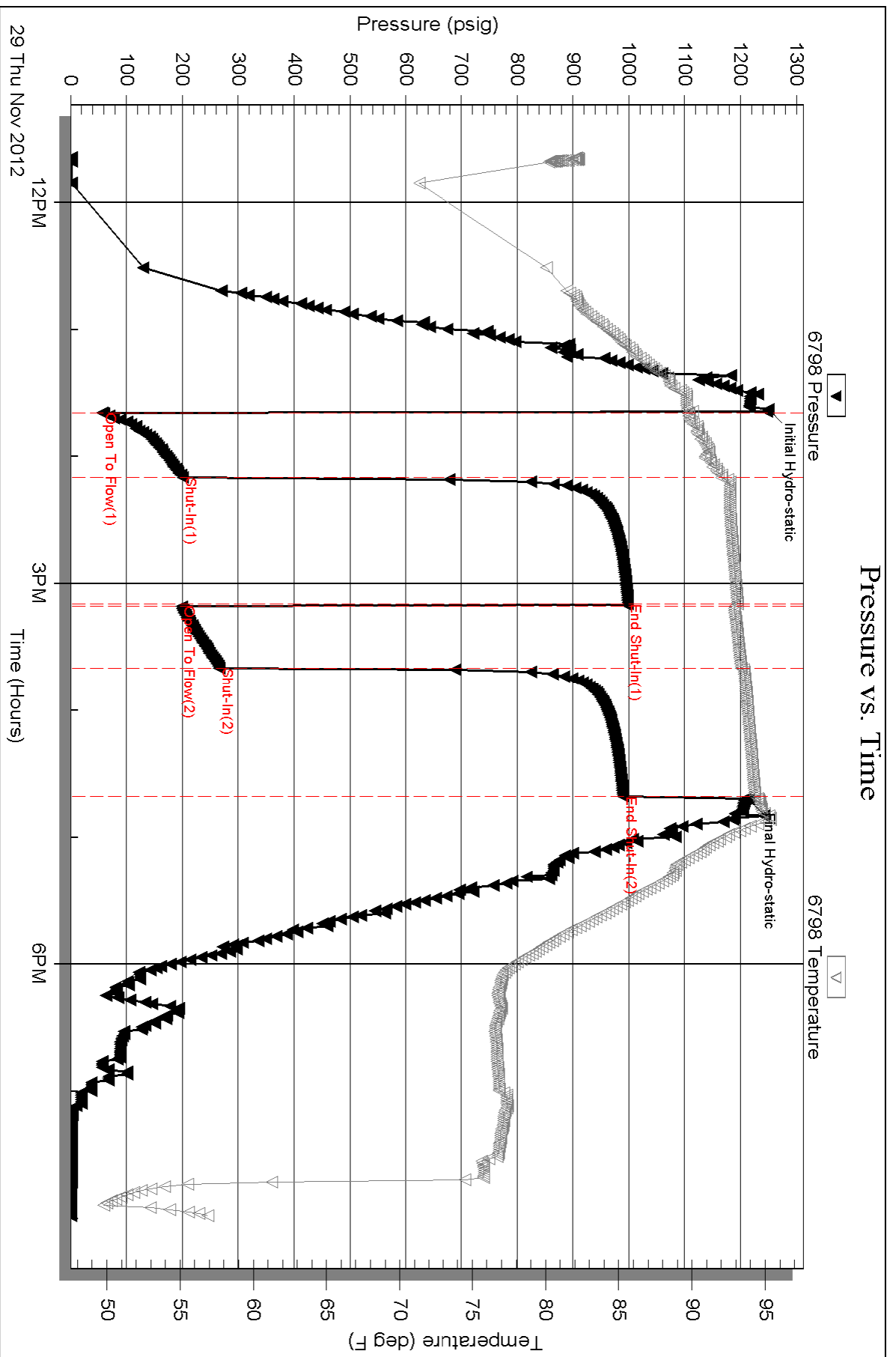
Length ft	Description	Volume bbl
148.00	OCW 5%O 95%W	0.728
62.00	OMCW 5%O 10%M 85%W	0.476
30.00	MWCO 10%M 25%W 65%O	0.308
270.00	SOCM 2%O 98%M	2.770

Total Length: 510.00 ft Total Volume: 4.282 bbl

Num Fluid Samples: 0 Num Gas Bombs: 0 Serial #:

Laboratory Name: Laboratory Location:

Recovery Comments: RW w as .3 @ 55 degrees

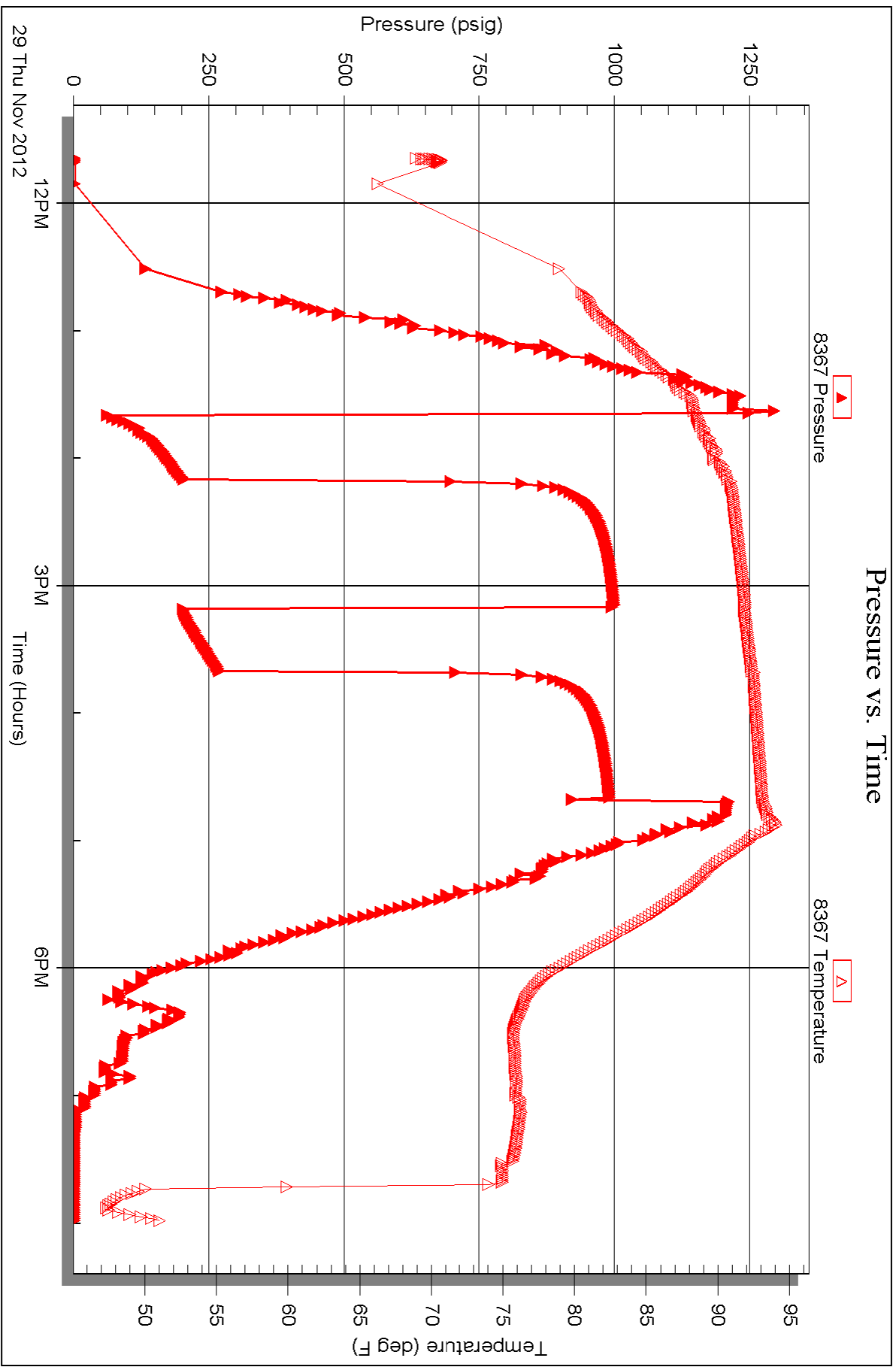


Serial #: 8367

Outside CMX Inc

Mushox #1

DST Test Number: 1





TRILOBITE TESTING INC.

P.O. Box 1733 • Hays, Kansas 67601

Test Ticket

NO. 49637

Well Name & No. Wushox 1 Test No. 1 Date 11/29/12
 Company CMX inc Elevation 1445 KB 1439 GL
 Address 1700 N. Waterfront PKwy Bldg 3B Wichita, KS 67206
 Co. Rep / Geo. Ken LeBlanc Rig C+G 1
 Location: Sec. 11 Twp. 24S Rge. 2E Co. Harvey State KS

Interval Tested 2416 - 2500 Zone Tested KC Drum
 Anchor Length 84 Drill Pipe Run 2239 Mud Wt. 9.3
 Top Packer Depth 2411 Drill Collars Run 178 Vis 50
 Bottom Packer Depth 2416 Wt. Pipe Run 0 WL 9.6
 Total Depth 2500 Chlorides 1600 ppm System LCM 2

Blow Description IF: Fair Blow, BOB in 8 minutes

ISI: No Blow Back

FF: Fair Blow, BOB in 11 minutes

FSI: No Blow Back

Rec	Feet of	%gas	%oil	%water	%mud
<u>270</u>	<u>SOCM</u>	<u>2</u>	<u>2</u>	<u>98</u>	<u>98</u>
<u>30</u>	<u>MWCO</u>	<u>65</u>	<u>25</u>	<u>10</u>	<u>10</u>
<u>62</u>	<u>OMCW</u>	<u>5</u>	<u>85</u>	<u>10</u>	<u>10</u>
<u>148</u>	<u>OCW</u>	<u>5</u>	<u>95</u>		
Rec	Feet of	%gas	%oil	%water	%mud
Rec Total	<u>510</u>	BHT	<u>94</u>	Gravity	<u>N/C</u>
		API RW	<u>.3</u>	@	<u>55</u> °F Chlorides <u>28000</u> ppm

(A) Initial Hydrostatic	<u>1250</u>
(B) First Initial Flow	<u>57</u>
(C) First Final Flow	<u>201</u>
(D) Initial Shut-In	<u>998</u>
(E) Second Initial Flow	<u>199</u>
(F) Second Final Flow	<u>266</u>
(G) Final Shut-In	<u>990</u>
(H) Final Hydrostatic	<u>1215</u>

Test 1150
 Jars
 Safety Joint 75
 Circ Sub
 Hourly Standby
 Mileage 220 341
 Sampler
 Straddle
 Shale Packer
 Extra Packer
 Extra Recorder
 Day Standby 1d 13hrs
 Accessibility
 Sub Total 1566

T-On Location 11:15
 T-Started 11:38
 T-Open 13:39
 T-Pulled 16:40
 T-Out 19:58

Comments Loaded Tools 12/1/12 @ 09:00 motel 2 days

Ruined Shale Packer
 Ruined Packer
 Extra Copies
 Sub Total 800
 Total 2366
 MP/DST Disc't

Initial Open 30
 Initial Shut-In 60
 Final Flow 30
 Final Shut-In 60

Approved By Ken LeBlanc

Our Representative [Signature]

Trilobite Testing Inc. shall not be liable for damaged of any kind of the property or personnel of the one for whom a test is made, or for any loss suffered or sustained, directly or indirectly, through the use of its equipment, or its statements or opinion concerning the results of any test, tools lost or damaged in the hole shall be paid for at cost by the party for whom the test is made.