



TRILOBITE TESTING, INC.

DRILL STEM TEST REPORT

Eternity Explorations LLC.

36-10-32-Thomas Co.

383 Spyglass Dr.
Coppell Texas, 75019

Verna Marie #3

Job Ticket: 53205

DST#: 2

ATTN: Scott Alberg

Test Start: 2013.04.29 @ 21:17:01

GENERAL INFORMATION:

Formation: **K & Lenapal**

Deviated: No Whipstock: ft (KB)

Time Tool Opened: 23:06:31

Time Test Ended: 04:00:01

Test Type: Conventional Bottom Hole (Reset)

Tester: Tate Lang

Unit No: 60

Interval: 4240.00 ft (KB) To 4310.00 ft (KB) (TVD)

Reference Elevations: 2980.00 ft (KB)

Total Depth: 4220.00 ft (KB) (TVD)

2975.00 ft (CF)

Hole Diameter: 7.88 inches Hole Condition: Good

KB to GR/CF: 5.00 ft

Serial #: 8356 Outside

Press @ Run Depth: 109.31 psig @ 4241.00 ft (KB)

Capacity: 8000.00 psig

Start Date: 2013.04.29

End Date:

2013.04.30

Last Calib.: 2013.04.30

Start Time: 21:17:06

End Time:

04:00:00

Time On Btm: 2013.04.29 @ 23:06:01

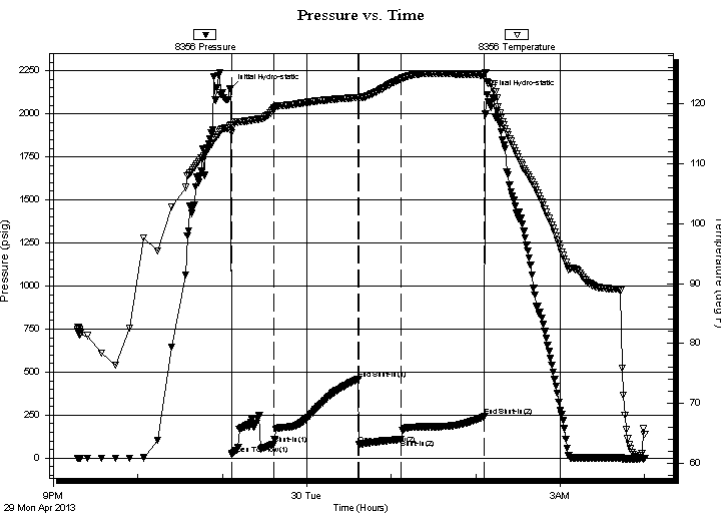
Time Off Btm: 2013.04.30 @ 02:08:01

TEST COMMENT: Fair surface blow built to 3 3/4 in.

Dead no blow

Dead no blow

Dead no blow



PRESSURE SUMMARY

Time (Min.)	Pressure (psig)	Temp (deg F)	Annotation
0	2145.65	116.39	Initial Hydro-static
1	23.84	115.17	Open To Flow (1)
31	80.77	119.14	Shut-In(1)
91	457.36	121.02	End Shut-In(1)
91	82.43	120.97	Open To Flow (2)
121	109.31	124.15	Shut-In(2)
180	240.72	124.76	End Shut-In(2)
182	2109.00	123.61	Final Hydro-static

Recovery

Length (ft)	Description	Volume (bbl)
124.00	30%M 70%W	0.61
66.00	100%M With oil spots	0.93

Gas Rates

	Choke (inches)	Pressure (psig)	Gas Rate (Mcf/d)

* Recovery from multiple tests



**TRILOBITE
TESTING, INC.**

DRILL STEM TEST REPORT

FLUID SUMMARY

Eternity Explorations LLC.

36-10-32-Thomas Co.

383 Spyglass Dr.
Coppell Texas, 75019

Verna Marie #3

Job Ticket: 53205

DST#: 2

ATTN: Scott Alberg

Test Start: 2013.04.29 @ 21:17:01

Mud and Cushion Information

Mud Type: Gel Chem

Cushion Type:

Oil API:

deg API

Mud Weight: 9.00 lb/gal

Cushion Length:

ft

Water Salinity:

38000 ppm

Viscosity: 53.00 sec/qt

Cushion Volume:

bbbl

Water Loss: 7.60 in³

Gas Cushion Type:

Resistivity: ohm.m

Gas Cushion Pressure:

psig

Salinity: 1700.00 ppm

Filter Cake: 2.00 inches

Recovery Information

Recovery Table

Length ft	Description	Volume bbbl
124.00	30%M 70%W	0.610
66.00	100%M With oil spots	0.926

Total Length: 190.00 ft Total Volume: 1.536 bbl

Num Fluid Samples: 0

Num Gas Bombs: 0

Serial #:

Laboratory Name:

Laboratory Location:

Recovery Comments: RW .204 @ 64F = 38000

