



DRILL STEM TEST REPORT

Prepared For: **F.G holl**

9431 East Central Suite 100
Wichita Kansas 67206

ATTN: Ryan Greenbaum

8-19s-14w -Barton

Gcom Trust

Start Date: 2011.10.04 @ 02:03:00

End Date: 2011.10.04 @ 08:46:30

Job Ticket #: 17220 DST #: 1

Superior Testers Enterprises LLC
PO Box 138 Great Bend KS 67530
1-800-792-6902

Printed: 2011.10.04 @ 09:13:27

F.G holl
Gcom Trust
8-19s-14w -Barton
DST # 1
Lansing A-D
2011.10.04



DRILL STEM TEST REPORT

TOOL DIAGRAM

F.G holl
 9431 East Central Suite 100
 Wichita Kansas 67206
 ATTN: Ryan Greenbaum

Gcom Trust
8-19s-14w -Barton
 Job Ticket: 17220 **DST#: 1**
 Test Start: 2011.10.04 @ 02:03:00

Tool Information

Drill Pipe:	Length: 3231.00 ft	Diameter: 3.80 inches	Volume: 45.32 bbl	Tool Weight: 2000.00 lb
Heavy Wt. Pipe:	Length: 0.00 ft	Diameter: 0.00 inches	Volume: 0.00 bbl	Weight set on Packer: 20000.00 lb
Drill Collar:	Length: 0.00 ft	Diameter: 0.00 inches	Volume: 0.00 bbl	Weight to Pull Loose: 43000.00 lb
			<u>Total Volume: 45.32 bbl</u>	Tool Chased 1.00 ft
Drill Pipe Above KB:	15.00 ft			String Weight: Initial 42000.00 lb
Depth to Top Packer:	3244.00 ft			Final 42000.00 lb
Depth to Bottom Packer:	ft			
Interval between Packers:	41.00 ft			
Tool Length:	69.00 ft			
Number of Packers:	2	Diameter: 6.25 inches		

Tool Comments:

Tool Description	Length (ft)	Serial No.	Position	Depth (ft)	Accum. Lengths
Shut-In Tool	5.00			3221.00	
Hydraulic Tool	5.00			3226.00	
Jars	6.00			3232.00	
Safety Joint	2.00			3234.00	
Packer	5.00			3239.00	28.00 Bottom Of Top Packer
Packer	5.00			3244.00	
Perforations	36.00			3280.00	
Recorder	1.00	6806	Inside	3281.00	
Recorder	1.00	6663	Outside	3282.00	
Bull Plug	3.00			3285.00	41.00 Bottom Packers & Anchor
Total Tool Length:	69.00				



DRILL STEM TEST REPORT

FLUID SUMMARY

F.G holl
9431 East Central Suite 100
Wichita Kansas 67206
ATTN: Ryan Greenbaum

Gcom Trust
8-19s-14w -Barton
Job Ticket: 17220 **DST#: 1**
Test Start: 2011.10.04 @ 02:03:00

Mud and Cushion Information

Mud Type: Gel Chem	Cushion Type:	Oil API:	deg API
Mud Weight: 9.00 lb/gal	Cushion Length: ft	Water Salinity:	ppm
Viscosity: 41.00 sec/qt	Cushion Volume: bbl		
Water Loss: 7.60 in ³	Gas Cushion Type:		
Resistivity: ohm.m	Gas Cushion Pressure: psia		
Salinity: 5800.00 ppm			
Filter Cake: 1.00 inches			

Recovery Information

Recovery Table

Length ft	Description	Volume bbl
60.00	Mud cut oil 30%Mud70%Oil	0.842
60.00	Gassy oil 50%Gas 50%oil	0.842
0.00	2040 foot gas in pipe	0.000

Total Length: 120.00 ft Total Volume: 1.684 bbl

Num Fluid Samples: 0 Num Gas Bombs: 0 Serial #:
Laboratory Name: Laboratory Location:
Recovery Comments:

Serial #: 6806

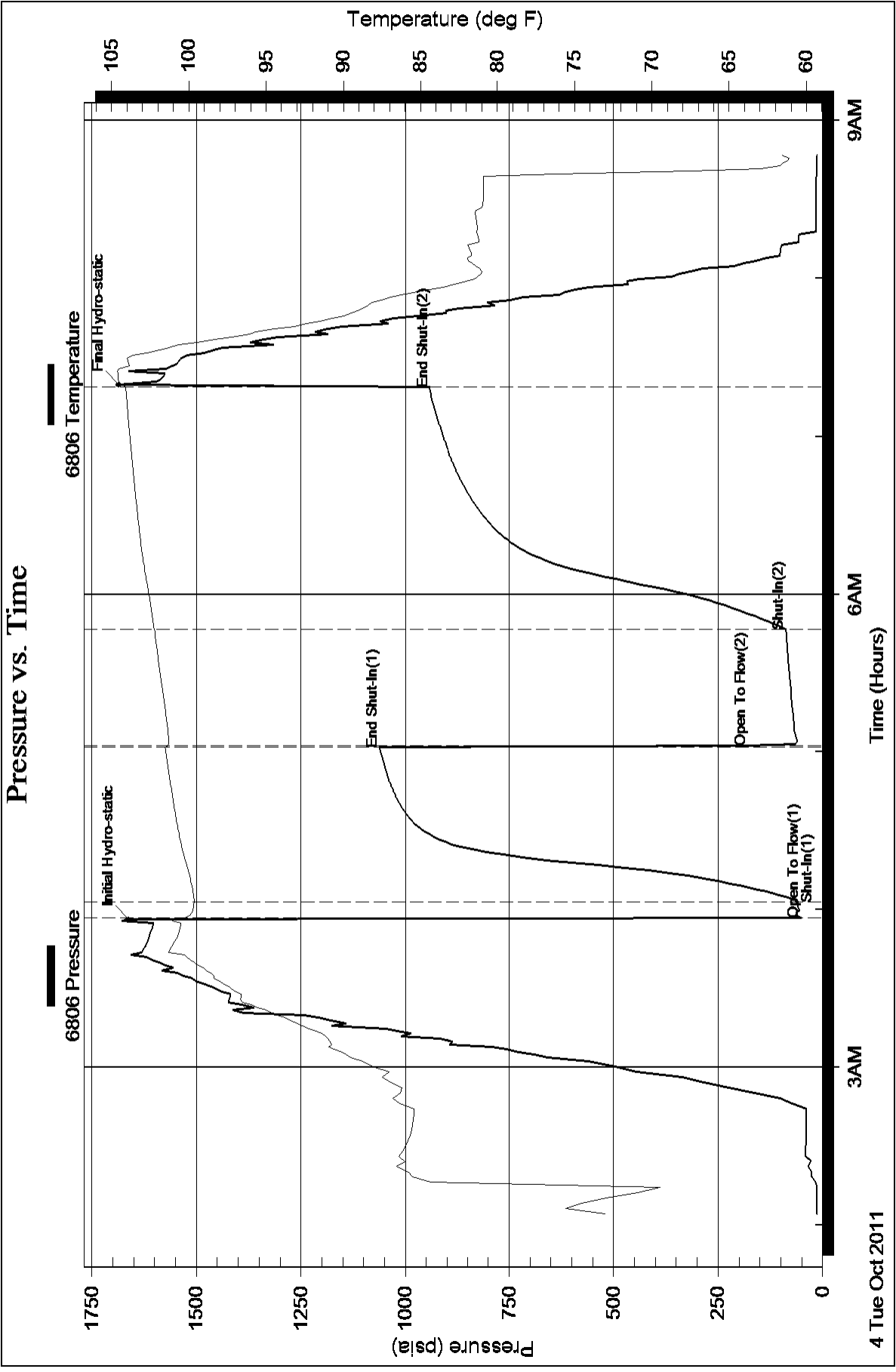
Inside

F.G.holl

8-19s-14w -Barton

DST Test Number: 1

Pressure vs. Time



Pressure vs. Time

