



DRILL STEM TEST REPORT

Prepared For: **F.G Holl**

9431 East Central Suite 100
Wichita Kansas 67206

ATTN: Ryan Greenbaum

8-19s-14w -Barton

Gcom Trust

Start Date: 2011.10.05 @ 02:15:00

End Date: 2011.10.05 @ 06:57:30

Job Ticket #: 17222 DST #: 3

Superior Testers Enterprises LLC
PO Box 138 Great Bend KS 67530
1-800-792-6902

Printed: 2011.10.05 @ 19:23:28

F.G Holl
Gcom Trust
8-19s-14w -Barton
DST # 3
Lansing H,I,J,K
2011.10.05



DRILL STEM TEST REPORT

F.G Holl
 9431 East Central Suite 100
 Wichita Kansas 67206
 ATTN: Ryan Greenbaum

Gcom Trust
8-19s-14w -Barton
 Job Ticket: 17222 **DST#: 3**
 Test Start: 2011.10.05 @ 02:15:00

GENERAL INFORMATION:

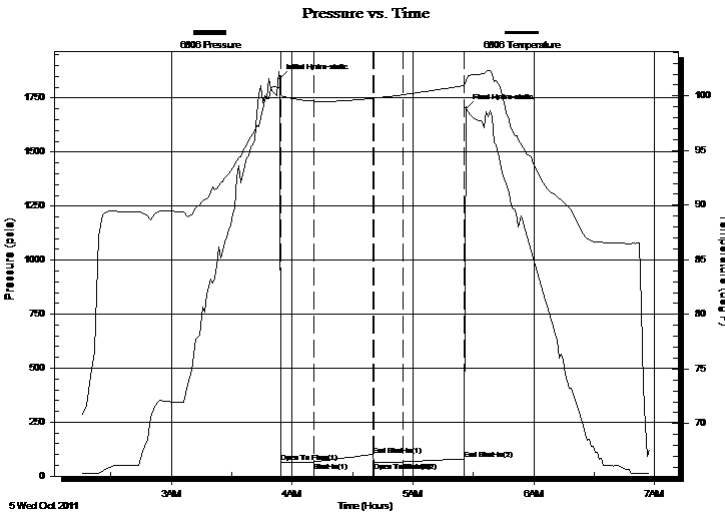
Formation: **Lansing H,I,J,K**
 Deviated: No Whipstock: ft (KB)
 Time Tool Opened: 03:54:30
 Time Test Ended: 06:57:30
 Interval: **3395.00 ft (KB) To 3460.00 ft (KB) (TVD)**
 Total Depth: 3460.00 ft (KB) (TVD)
 Hole Diameter: 7.88 inches Hole Condition: Fair
 Test Type: Conventional Bottom Hole (Initial)
 Tester: Dustin Ellis
 Unit No: 3315-GB-20
 Reference Elevations: 1919.00 ft (KB)
 1911.00 ft (CF)
 KB to GR/CF: 8.00 ft

Serial #: 6806

Press @ RunDepth: 65.72 psia @ ft (KB) Capacity: 5000.00 psia
 Start Date: 2011.10.05 End Date: 2011.10.05 Last Calib.: 2011.10.05
 Start Time: 02:16:00 End Time: 06:57:30 Time On Btm: 2011.10.05 @ 03:54:00
 Time Off Btm: 2011.10.05 @ 05:26:30

TEST COMMENT: 1st open 15 minutes Weak surface blow
 1st shut in 30 minutes No blow back
 2nd open 15 minutes Weak surface blow
 2nd shut in 30 minutes No blow back

PRESSURE SUMMARY



Time (Min.)	Pressure (psia)	Temp (deg F)	Annotation
0	1839.80	100.64	Initial Hydro-static
1	63.05	100.15	Open To Flow (1)
17	65.86	99.53	Shut-In(1)
47	98.65	99.79	End Shut-In(1)
47	65.11	99.79	Open To Flow (2)
61	65.72	100.11	Shut-In(2)
92	79.44	100.94	End Shut-In(2)
93	1702.60	101.41	Final Hydro-static

Recovery

Length (ft)	Description	Volume (bbl)
5.00	Drilling Mud 100%	0.07

Gas Rates

Choke (inches)	Pressure (psia)	Gas Rate (Mcf/d)



DRILL STEM TEST REPORT

F.G Holl
 9431 East Central Suite 100
 Wichita Kansas 67206
 ATTN: Ryan Greenbaum

Gcom Trust
8-19s-14w -Barton
 Job Ticket: 17222 **DST#: 3**
 Test Start: 2011.10.05 @ 02:15:00

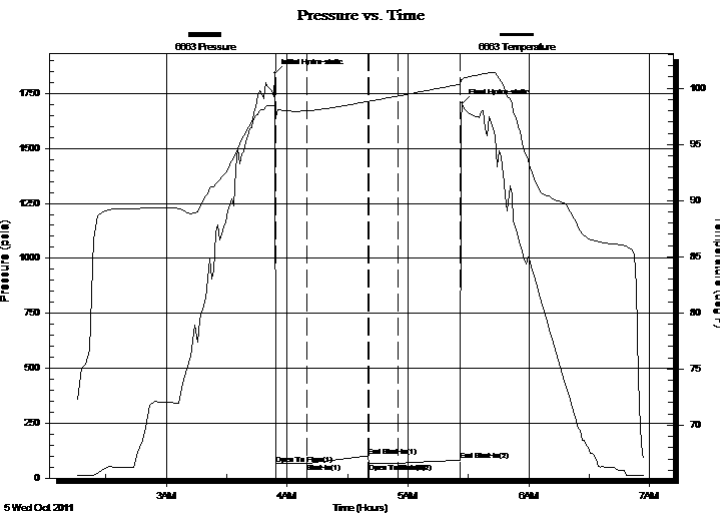
GENERAL INFORMATION:

Formation: **Lansing H,I,J,K**
 Deviated: No Whipstock: ft (KB)
 Time Tool Opened: 03:54:30
 Time Test Ended: 06:57:30
 Interval: **3395.00 ft (KB) To 3460.00 ft (KB) (TVD)**
 Total Depth: 3460.00 ft (KB) (TVD)
 Hole Diameter: 7.88 inches Hole Condition: Fair
 Test Type: Conventional Bottom Hole (Initial)
 Tester: Dustin Ellis
 Unit No: 3315-GB-20
 Reference Elevations: 1919.00 ft (KB)
 1911.00 ft (CF)
 KB to GR/CF: 8.00 ft

Serial #: 6663

Press @ RunDepth: 81.13 psia @ ft (KB) Capacity: 5000.00 psia
 Start Date: 2011.10.05 End Date: 2011.10.05 Last Calib.: 2011.10.05
 Start Time: 02:16:00 End Time: 06:57:30 Time On Btm: 2011.10.05 @ 03:54:00
 Time Off Btm: 2011.10.05 @ 05:27:00

TEST COMMENT: 1st open 15 minutes Weak surface blow
 1st shut in 30 minutes No blow back
 2nd open 15 minutes Weak surface blow
 2nd shut in 30 minutes No blow back



PRESSURE SUMMARY

Time (Min.)	Pressure (psia)	Temp (deg F)	Annotation
0	1842.30	98.55	Initial Hydro-static
1	62.89	97.42	Open To Flow (1)
16	67.11	98.00	Shut-In(1)
46	101.44	98.83	End Shut-In(1)
47	66.67	98.83	Open To Flow (2)
61	67.33	99.31	Shut-In(2)
92	81.13	100.35	End Shut-In(2)
94	1705.65	100.82	Final Hydro-static

Recovery

Length (ft)	Description	Volume (bbl)
5.00	Drilling Mud 100%	0.07

Gas Rates

Choke (inches)	Pressure (psia)	Gas Rate (Mcf/d)



DRILL STEM TEST REPORT

TOOL DIAGRAM

F.G Holl
 9431 East Central Suite 100
 Wichita Kansas 67206
 ATTN: Ryan Greenbaum

Gcom Trust
8-19s-14w -Barton
 Job Ticket: 17222 **DST#: 3**
 Test Start: 2011.10.05 @ 02:15:00

Tool Information

Drill Pipe:	Length: 3389.00 ft	Diameter: 3.80 inches	Volume: 47.54 bbl	Tool Weight:	2000.00 lb
Heavy Wt. Pipe:	Length: 0.00 ft	Diameter: 0.00 inches	Volume: 0.00 bbl	Weight set on Packer:	20000.00 lb
Drill Collar:	Length: 0.00 ft	Diameter: 0.00 inches	Volume: 0.00 bbl	Weight to Pull Loose:	24000.00 lb
			<u>Total Volume: 47.54 bbl</u>	Tool Chased	1.00 ft
Drill Pipe Above KB:	22.00 ft			String Weight: Initial	24000.00 lb
Depth to Top Packer:	3395.00 ft			Final	24000.00 lb
Depth to Bottom Packer:	ft				
Interval between Packers:	65.00 ft				
Tool Length:	93.00 ft				
Number of Packers:	2	Diameter: 6.25 inches			

Tool Comments:

Tool Description	Length (ft)	Serial No.	Position	Depth (ft)	Accum. Lengths
Shut-In Tool	5.00			3372.00	
Hydraulic Tool	5.00			3377.00	
Jars	6.00			3383.00	
Safety Joint	2.00			3385.00	
Packer	5.00			3390.00	28.00 Bottom Of Top Packer
Packer	5.00			3395.00	
Perforations	0.00			3395.00	
Change Over Sub	0.75			3395.75	
Drill Pipe	31.90			3427.65	
Change Over Sub	0.75			3428.40	
Perforations	26.60			3455.00	
Recorder	1.00	6806	Inside	3456.00	
Recorder	1.00	6663	Outside	3457.00	
Bull Plug	3.00			3460.00	65.00 Bottom Packers & Anchor

Total Tool Length: 93.00



DRILL STEM TEST REPORT

FLUID SUMMARY

F.G Holl

Gcom Trust

9431 East Central Suite 100
Wichita Kansas 67206

8-19s-14w -Barton

Job Ticket: 17222

DST#: 3

ATTN: Ryan Greenbaum

Test Start: 2011.10.05 @ 02:15:00

Mud and Cushion Information

Mud Type: Gel Chem
Mud Weight: 9.00 lb/gal
Viscosity: 51.00 sec/qt
Water Loss: 10.19 in³
Resistivity: ohm.m
Salinity: 9200.00 ppm
Filter Cake: 1.00 inches

Cushion Type:
Cushion Length: ft
Cushion Volume: bbl
Gas Cushion Type:
Gas Cushion Pressure: psia

Oil API: deg API
Water Salinity: ppm

Recovery Information

Recovery Table

Length ft	Description	Volume bbl
5.00	Drilling Mud 100%	0.070

Total Length: 5.00 ft Total Volume: 0.070 bbl

Num Fluid Samples: 0

Num Gas Bombs: 0

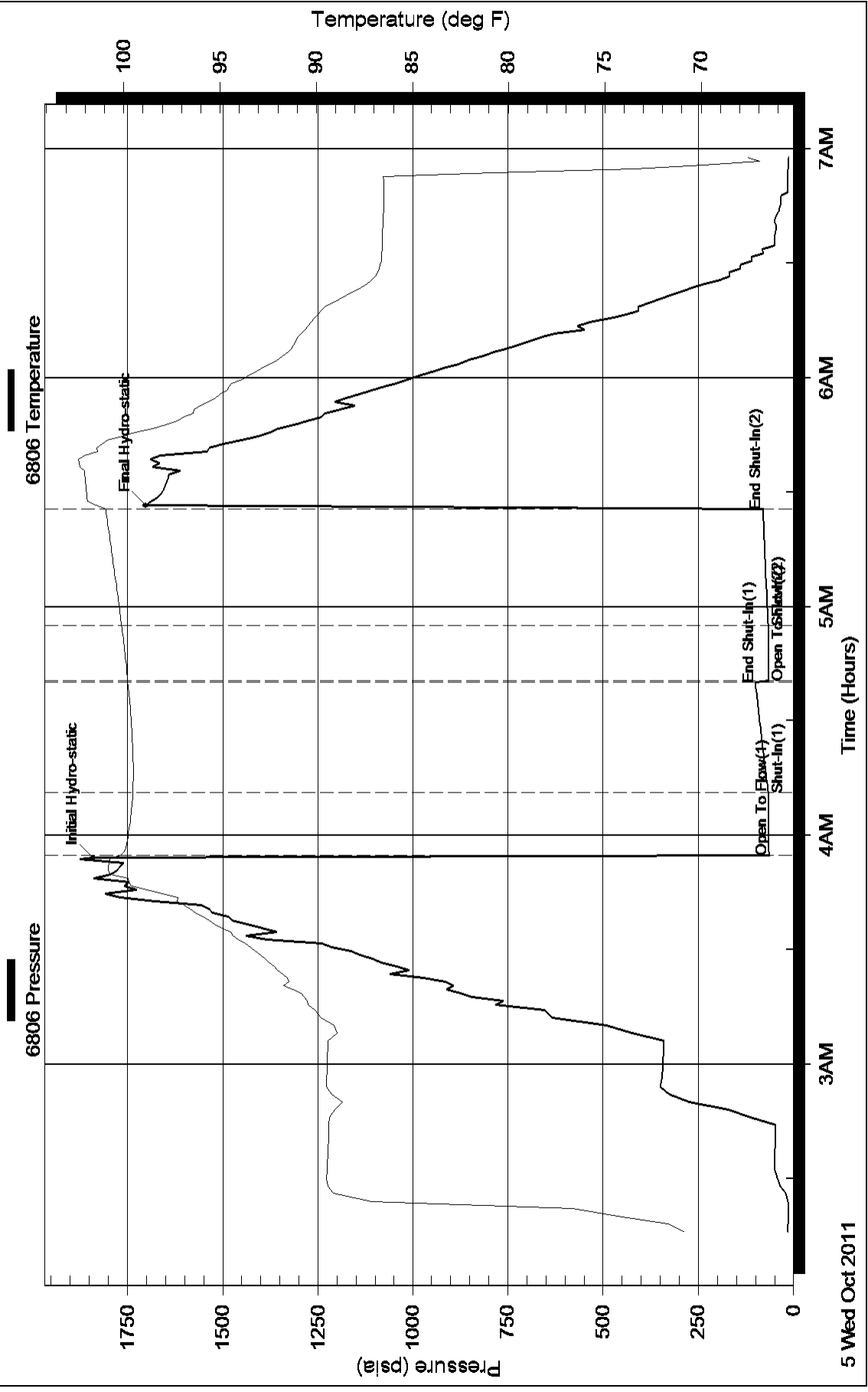
Serial #:

Laboratory Name:

Laboratory Location:

Recovery Comments:

Pressure vs. Time



Pressure vs. Time

