

DRILL STEM TEST REPORT

FG Holl Company LLC
 9431 East Central
 Suite 100
 Wichita, Kansas 67206+2563
 ATTN: Renee Husted

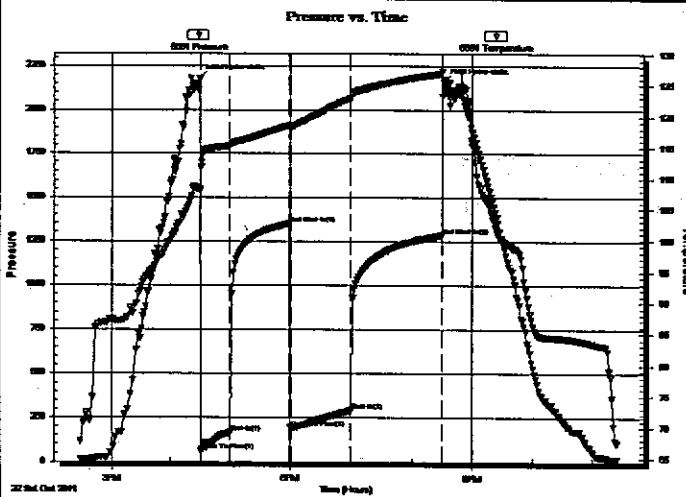
Reece Unit #1-32
 32/22S/21W/Hodgeman
 Job Ticket: 18789 DST#: 3
 Test Start: 2011.10.22 @ 14:27:00

GENERAL INFORMATION:

Formation: **Mississippian**
 Deviated: No Whipstock: ft (KB)
 Time Tool Opened: 16:31:30
 Time Test Ended: 23:25:00
 Interval: **4498.00 ft (KB) To 4506.00 ft (KB) (TVD)**
 Total Depth: **4506.00 ft (KB) (TVD)**
 Hole Diameter: **7.88 inches** Hole Condition: Fair
 Test Type: Conventional Bottom Hole (Initial)
 Tester: Ken Sw inny
 Unit No: 3325 Great Bend/112
 Reference Elevations: 2234.00 ft (KB)
 2224.00 ft (CF)
 KB to GR/CF: 10.00 ft

Serial #: 6651 Inside
 Press@RunDepth: 288.22 psig @ 4502.00 ft (KB) Capacity: 5000.00 psig
 Start Date: 2011.10.22 End Date: 2011.10.22 Last Calib.: 2011.10.22
 Start Time: 14:28:00 End Time: 23:25:00 Time On Btm: 2011.10.22 @ 16:30:00
 Time Off Btm: 2011.10.22 @ 20:32:00

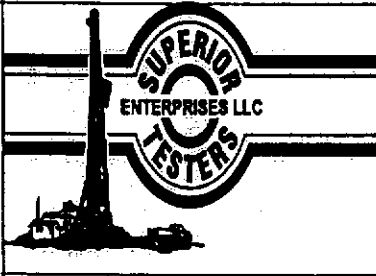
TEST COMMENT: 1ST Open 30 Minutes/Good blow/Blow built to bottom of bucket in 17 minutes
 1ST Shut In 60 Minutes/Blow back built to 4 inches
 2ND Open 60 Minutes/Good blow/Blow built to bottom of bucket in 17 minutes/Gas to surface in 37 minutes
 2ND Shut In 90 Minutes/Blow back built to 1 inch



PRESSURE SUMMARY			
Time (Min.)	Pressure (psig)	Temp (deg F)	Annotation
0	2176.29	108.23	Initial Hydro-static
2	60.22	111.75	Open To Flow (1)
29	161.85	115.23	Shut-In(1)
90	1348.06	118.55	End Shut-In(1)
91	191.91	118.20	Open To Flow (2)
150	288.22	122.93	Shut-In(2)
240	1282.15	126.92	End Shut-In(2)
242	2157.85	125.90	Final Hydro-static

Recovery		
Length (ft)	Description	Volume (bbl)
615.00	Clean Gassy Oil	5.79
0.00	Gas 20% Oil 80%	0.00
60.00	Water and Mud cut Oil	0.88
0.00	Water 10% Mud 25% Oil 65%	0.00
0.00	Corrected gravity of oil 36	0.00

Gas Rates			
	Choke (inches)	Pressure (psig)	Gas Rate (Mcf/d)



DRILL STEM TEST REPORT

FLUID SUMMARY

FG Holl Company LLC

Renee Unit #1-32

9431 East Central
Suite 100
Wichita, Kansas 67206+2563
ATTN: Renee Husted

32/22S/21W/Hodgeman
Job Ticket: 18789 DST#: 3
Test Start: 2011.10.22 @ 14:27:00

Mud and Cushion Information

Mud Type: Gel Chem
Mud Weight: 9.00 lb/gal
Viscosity: 52.00 sec/qt
Water Loss: 7.98 in³
Resistivity: ohm.m
Salinity: 7600.00 ppm
Filter Cake: 1.00 inches

Cushion Type:
Cushion Length: ft
Cushion Volume: bbl
Gas Cushion Type:
Gas Cushion Pressure: psig

Oil API: deg API
Water Salinity: ppm

Recovery Information

Recovery Table

Length ft	Description	Volume bbl
615.00	Clean Gassy Oil	5.791
0.00	Gas 20% Oil 80%	0.000
60.00	Water and Mud cut Oil	0.877
0.00	Water 10% Mud 25% Oil 65%	0.000
0.00	Corrected gravity of oil 36	0.000

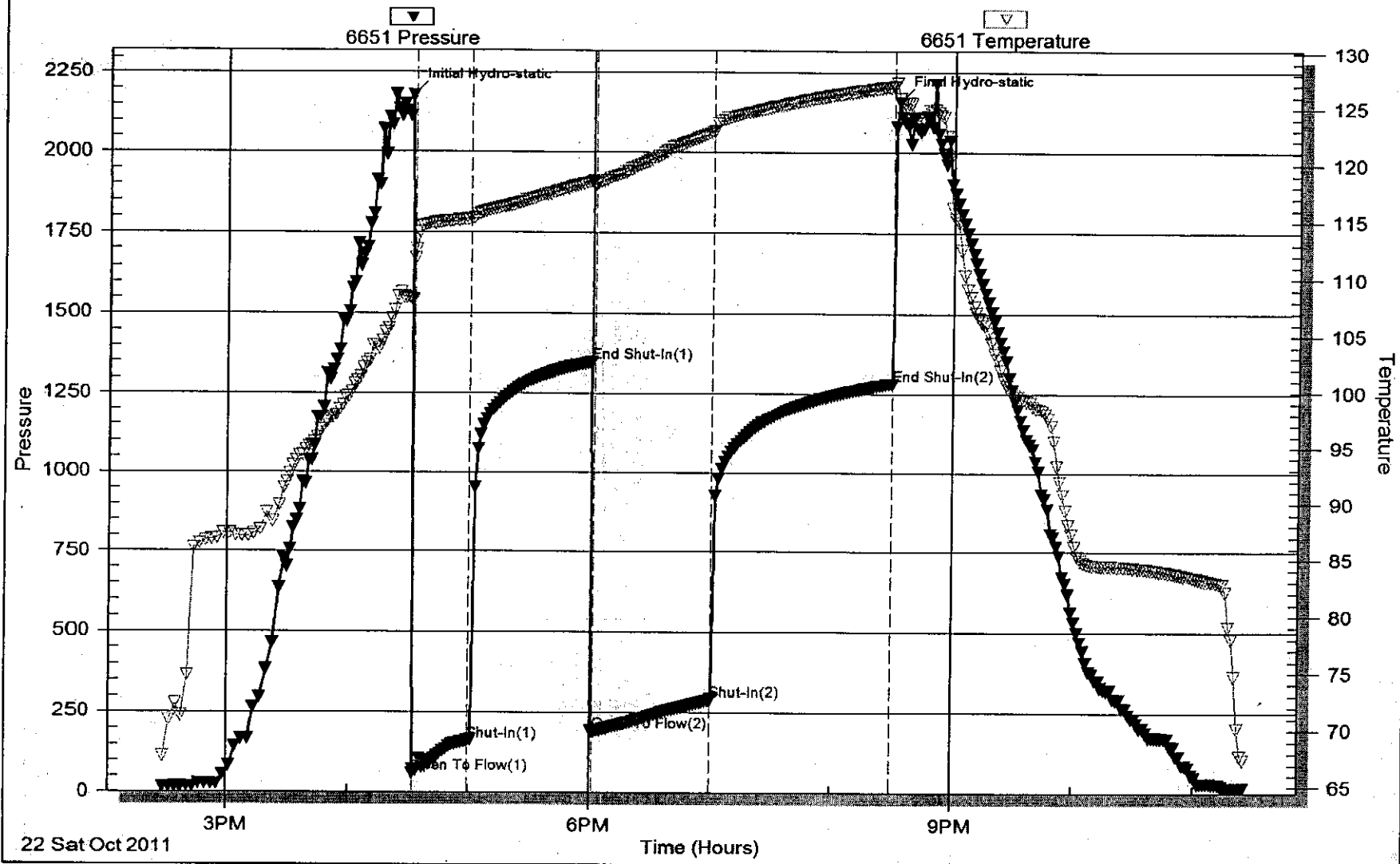
Total Length: 675.00 ft Total Volume: 6.668 bbl

Num Fluid Samples: 0 Num Gas Bombs: 0 Serial #:

Laboratory Name: Laboratory Location:

Recovery Comments:

Pressure vs. Time



Serial #: 6749

Outside FG Holl Company LLC

32/22S/21W/Hodgeman

DST Test Number: 3

