



TRILOBITE TESTING, INC.

DRILL STEM TEST REPORT

Berexco LLC.
 2020 N Bramblewood
 Wichita Ks. 67206+1094
 ATTN: Bryan Bynog

30-14s-14w Russell
Hummel #5
 Job Ticket: 45695 **DST#: 5**
 Test Start: 2012.02.19 @ 21:25:05

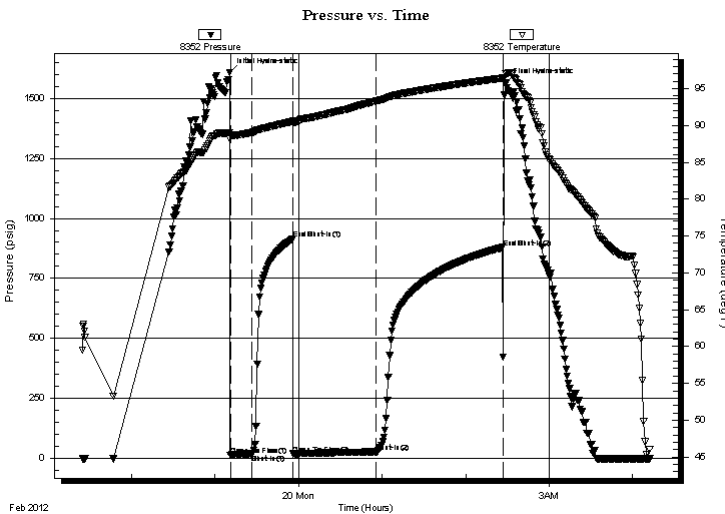
GENERAL INFORMATION:

Formation: **Arbuckle**
 Deviated: No Whipstock: ft (KB)
 Test Type: Conventional Bottom Hole (Reset)
 Time Tool Opened: 23:11:00 Tester: Andy Carreira
 Time Test Ended: 04:12:20 Unit No: 39
 Interval: **3195.00 ft (KB) To 3203.00 ft (KB) (TVD)** Reference Elevations: 1790.00 ft (KB)
 Total Depth: 3203.00 ft (KB) (TVD) 1779.00 ft (CF)
 Hole Diameter: 7.88 inches Hole Condition: Poor KB to GR/CF: 11.00 ft

Serial #: 8352 Outside
 Press @ Run Depth: 27.34 psig @ 3196.00 ft (KB) Capacity: 8000.00 psig
 Start Date: 2012.02.19 End Date: 2012.02.20 Last Calib.: 2012.02.20
 Start Time: 21:25:05 End Time: 04:12:20 Time On Btm: 2012.02.19 @ 23:10:30
 Time Off Btm: 2012.02.20 @ 02:28:59

TEST COMMENT: IF:(15min) Weak Surface Blow
 IS:(30min) No Return
 FF:(60min) No Blow
 FS:(90min) No Return

PRESSURE SUMMARY



Time (Min.)	Pressure (psig)	Temp (deg F)	Annotation
0	1608.45	88.99	Initial Hydro-static
1	13.52	88.17	Open To Flow (1)
17	17.68	89.05	Shut-In(1)
46	914.59	90.57	End Shut-In(1)
46	18.78	90.32	Open To Flow (2)
106	27.34	93.30	Shut-In(2)
197	878.92	96.42	End Shut-In(2)
199	1565.44	97.01	Final Hydro-static

Recovery

Length (ft)	Description	Volume (bbl)
10.00	MW	0.05

* Recovery from multiple tests

Gas Rates

Choke (inches)	Pressure (psig)	Gas Rate (Mcf/d)



**TRILOBITE
TESTING, INC.**

DRILL STEM TEST REPORT

FLUID SUMMARY

Berexco LLC.

30-14s-14w Russell

2020 N Bramblewood
Wichita Ks. 67206+1094

Hummel #5

Job Ticket: 45695

DST#: 5

ATTN: Bryan Bynog

Test Start: 2012.02.19 @ 21:25:05

Mud and Cushion Information

Mud Type: Gel Chem

Cushion Type:

Oil API:

deg API

Mud Weight: 9.00 lb/gal

Cushion Length:

ft

Water Salinity:

57000 ppm

Viscosity: 54.00 sec/qt

Cushion Volume:

bbbl

Water Loss: 8.77 in³

Gas Cushion Type:

Resistivity: ohm.m

Gas Cushion Pressure:

psig

Salinity: 6000.00 ppm

Filter Cake: inches

Recovery Information

Recovery Table

Length ft	Description	Volume bbl
10.00	MW	0.049

Total Length: 10.00 ft Total Volume: 0.049 bbl

Num Fluid Samples: 0

Num Gas Bombs: 0

Serial #:

Laboratory Name:

Laboratory Location:

Recovery Comments: Resistivity- .15 @ 60 deg = 57000

