



DRILL STEM TEST REPORT

Prepared For: **F.G.Holl Company LLC**

9431 East Central Suite #100
Wichita, Kansas 67206+2563

ATTN: Frank Greenbaum

Thompson #1-30

30/30S/13W Barber Co.

Start Date: 2012.01.18 @ 05:00:00

End Date: 2012.01.18 @ 00:00:00

Job Ticket #: 18869 DST #: 2

Superior Testers Enterprises LLC
PO Box 138 Great Bend KS 67530
1-800-792-6902

Printed: 2012.01.18 @ 08:21:06



DRILL STEM TEST REPORT

F.G.Holl Company LLC

30/30S/13W Barber Co.

9431 East Central Suite #100
Wichita, Kansas 67206+2563

Thompson #1-30

Job Ticket: 18869

DST#: 2

ATTN: Frank Greenbaum

Test Start: 2012.01.18 @ 05:00:00

GENERAL INFORMATION:

Formation: **Indian Cave**

Deviated: No Whipstock: ft (KB)

Time Tool Opened: 00:00:00

Time Test Ended: 00:00:00

Test Type: Conventional Bottom Hole (Initial)

Tester: Dylan E Ellis

Unit No: 3345/Great Bend/150

Interval: 2904.00 ft (KB) To 2955.00 ft (KB) (TVD)

Reference Elevations: 1929.00 ft (KB)

Total Depth: 2955.00 ft (KB) (TVD)

1918.00 ft (CF)

Hole Diameter: 7.88 inches Hole Condition: Fair

KB to GR/CF: 11.00 ft

Serial #: 6666 Outside

Press @ RunDepth: 957.70 psia @ 2952.19 ft (KB)

Capacity: 5000.00 psia

Start Date: 2012.01.18

End Date: 2012.01.18

Last Calib.: 2012.01.18

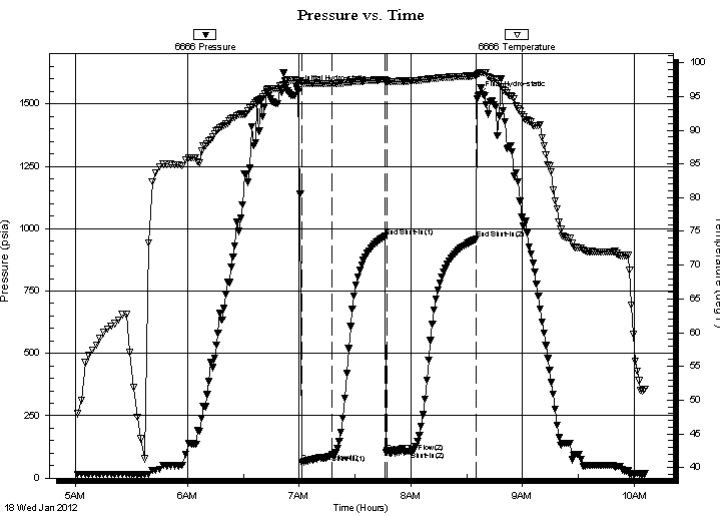
Start Time: 05:00:00

End Time: 10:05:30

Time On Btm: 2012.01.18 @ 06:59:00

Time Off Btm: 2012.01.18 @ 08:36:00

TEST COMMENT: 1ST Opening 15 Minutes very weak blow/blow built 2 inches into bucket of water
 1ST Shut-In 30 Minutes no blow back
 2ND Opening 15 Minutes very weak blow/blow blew 1 inch into bucket of water
 2ND Shut-In 30 Minutes no blow back



PRESSURE SUMMARY

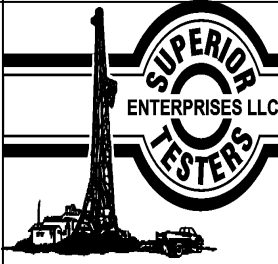
| Time (Min.) | Pressure (psia) | Temp (deg F) | Annotation |
|-------------|-----------------|--------------|----------------------|
| 0 | 1557.68 | 97.32 | Initial Hydro-static |
| 3 | 63.42 | 97.00 | Open To Flow (1) |
| 19 | 95.78 | 96.91 | Shut-In(1) |
| 47 | 968.64 | 97.47 | End Shut-In(1) |
| 48 | 105.02 | 97.25 | Open To Flow (2) |
| 61 | 108.63 | 97.32 | Shut-In(2) |
| 96 | 957.70 | 98.07 | End Shut-In(2) |
| 97 | 1533.22 | 98.38 | Final Hydro-static |

Recovery

| Length (ft) | Description | Volume (bbl) |
|-------------|-------------------|--------------|
| 100.00 | Drilling Mud 100% | 0.49 |
| | | |
| | | |
| | | |

Gas Rates

| | Choke (inches) | Pressure (psia) | Gas Rate (Mcf/d) |
|--|----------------|-----------------|------------------|
| | | | |



DRILL STEM TEST REPORT

F.G.Holl Company LLC

30/30S/13W Barber Co.

9431 East Central Suite #100
Wichita, Kansas 67206+2563

Thompson #1-30

Job Ticket: 18869

DST#: 2

ATTN: Frank Greenbaum

Test Start: 2012.01.18 @ 05:00:00

GENERAL INFORMATION:

Formation: **Indian Cave**

Deviated: No Whipstock: ft (KB)

Time Tool Opened: 00:00:00

Time Test Ended: 00:00:00

Test Type: Conventional Bottom Hole (Initial)

Tester: Dylan E Ellis

Unit No: 3345/Great Bend/150

Interval: 2904.00 ft (KB) To 2955.00 ft (KB) (TVD)

Reference Elevations: 1929.00 ft (KB)

Total Depth: 2955.00 ft (KB) (TVD)

1918.00 ft (CF)

Hole Diameter: 7.88 inches Hole Condition: Fair

KB to GR/CF: 11.00 ft

Serial #: 6731 **Inside**

Press @ Run Depth: 956.58 psia @ 2951.19 ft (KB)

Capacity: 5000.00 psia

Start Date: 2012.01.18

End Date: 2012.01.18

Last Calib.: 2012.01.18

Start Time: 05:00:00

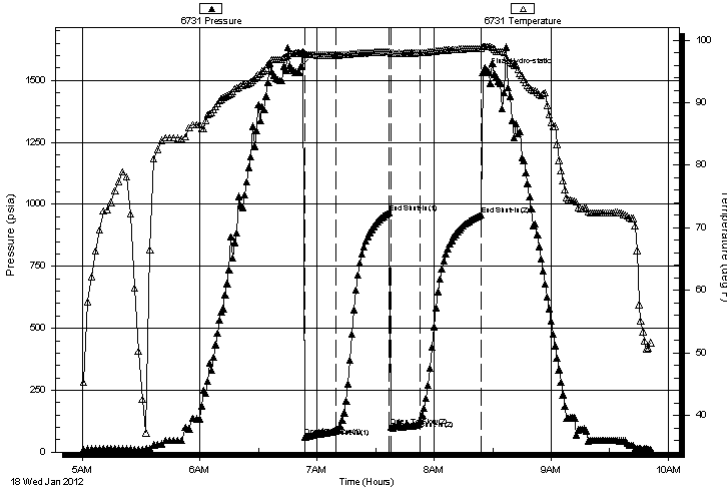
End Time: 09:50:53

Time On Btm: 2012.01.18 @ 06:51:53

Time Off Btm: 2012.01.18 @ 08:25:23

TEST COMMENT: 1ST Opening 15 Minutes very weak blow/blow built 2 inches into bucket of water
 1ST Shut-In 30 Minutes no blow back
 2ND Opening 15 Minutes very weak blow/blow blew 1 inch into bucket of water
 2ND Shut-In 30 Minutes no blow back

Pressure vs. Time



PRESSURE SUMMARY

| Time (Min.) | Pressure (psia) | Temp (deg F) | Annotation |
|-------------|-----------------|--------------|----------------------|
| 0 | 1557.39 | 97.85 | Initial Hydro-static |
| 2 | 61.90 | 97.75 | Open To Flow (1) |
| 18 | 94.73 | 97.63 | Shut-In(1) |
| 45 | 967.20 | 98.15 | End Shut-In(1) |
| 46 | 102.87 | 97.94 | Open To Flow (2) |
| 61 | 128.73 | 98.00 | Shut-In(2) |
| 92 | 956.58 | 98.70 | End Shut-In(2) |
| 94 | 1533.27 | 98.98 | Final Hydro-static |

Recovery

| Length (ft) | Description | Volume (bbl) |
|-------------|-------------------|--------------|
| 100.00 | Drilling Mud 100% | 0.49 |
| | | |
| | | |
| | | |

Gas Rates

| | Choke (inches) | Pressure (psia) | Gas Rate (Mcf/d) |
|--|----------------|-----------------|------------------|
| | | | |



DRILL STEM TEST REPORT

TOOL DIAGRAM

F.G.Holl Company LLC

30/30S/13W Barber Co.

9431 East Central Suite #100
Wichita, Kansas 67206+2563

Thompson #1-30

Job Ticket: 18869

DST#: 2

ATTN: Frank Greenbaum

Test Start: 2012.01.18 @ 05:00:00

Tool Information

| | | | | |
|---------------------------|--------------------|-----------------------|--------------------------------|------------------------------------|
| Drill Pipe: | Length: 2669.00 ft | Diameter: 3.80 inches | Volume: 37.44 bbl | Tool Weight: 2000.00 lb |
| Heavy Wt. Pipe: | Length: 0.00 ft | Diameter: 0.00 inches | Volume: 0.00 bbl | Weight set on Packer: 20000.00 lb |
| Drill Collar: | Length: 221.18 ft | Diameter: 2.25 inches | Volume: 1.09 bbl | Weight to Pull Loose: 15000.00 lb |
| | | | <u>Total Volume: 38.53 bbl</u> | Tool Chased 0.00 ft |
| Drill Pipe Above KB: | 15.18 ft | | | String Weight: Initial 52000.00 lb |
| Depth to Top Packer: | 2904.00 ft | | | Final 52000.00 lb |
| Depth to Bottom Packer: | ft | | | |
| Interval between Packers: | 51.19 ft | | | |
| Tool Length: | 80.19 ft | | | |
| Number of Packers: | 2 | Diameter: 6.75 inches | | |

Tool Comments:

| Tool Description | Length (ft) | Serial No. | Position | Depth (ft) | Accum. Lengths |
|------------------|-------------|------------|----------|------------|----------------|
|------------------|-------------|------------|----------|------------|----------------|

| | | | | | |
|-----------------|-------|------|---------|---------|----------------------------|
| Shut-In Tool | 5.00 | | | 2880.00 | |
| Hydraulic Tool | 5.00 | | | 2885.00 | |
| Jars | 6.00 | | | 2891.00 | |
| Safety Joint | 3.00 | | | 2894.00 | |
| Top Packer | 5.00 | | | 2899.00 | |
| Packer | 5.00 | | | 2904.00 | 29.00 Bottom Of Top Packer |
| Perforations | 5.00 | | | 2909.00 | |
| Change Over Sub | 0.75 | | | 2909.75 | |
| Drill Pipe | 31.69 | | | 2941.44 | |
| Change Over Sub | 0.75 | | | 2942.19 | |
| Anchor | 8.00 | | | 2950.19 | |
| Recorder | 1.00 | 6731 | Inside | 2951.19 | |
| Recorder | 1.00 | 6666 | Outside | 2952.19 | |
| Bull Plug | 3.00 | | | 2955.19 | 51.19 Anchor Tool |

Total Tool Length: 80.19



DRILL STEM TEST REPORT

FLUID SUMMARY

F.G.Holl Company LLC

30/30S/13W Barber Co.

9431 East Central Suite #100
Wichita, Kansas 67206+2563

Thompson #1-30

Job Ticket: 18869

DST#: 2

ATTN: Frank Greenbaum

Test Start: 2012.01.18 @ 05:00:00

Mud and Cushion Information

Mud Type: Gel Chem

Mud Weight: 10.00 lb/gal

Viscosity: 46.00 sec/qt

Water Loss: 16.00 in³

Resistivity: ohm.m

Salinity: 65000.00 ppm

Filter Cake: 1.00 inches

Cushion Type:

Cushion Length: ft

Cushion Volume: bbl

Gas Cushion Type:

Gas Cushion Pressure: psia

Oil API:

Water Salinity: deg API

ppm

Recovery Information

Recovery Table

| Length ft | Description | Volume bbl |
|--------------|-------------------|---------------|
| 100.00 | Drilling Mud 100% | 0.492 |

Total Length: 100.00 ft Total Volume: 0.492 bbl

Num Fluid Samples: 0

Num Gas Bombs: 0

Serial #:

Laboratory Name:

Laboratory Location:

Recovery Comments:

