



## DRILL STEM TEST REPORT

Prepared For: **F.G.Holl Company LLC**

9431 East Central Suite #100  
Wichita, Kansas 67206+2563

ATTN: Renee

### **Thompson #1-30**

#### **30/30S/13W Barber Co.**

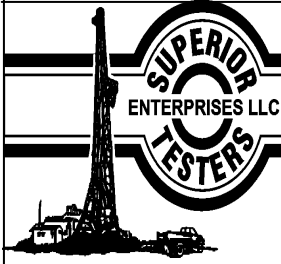
Start Date: 2012.01.25 @ 08:40:00

End Date: 2012.01.25 @ 16:24:00

Job Ticket #: 18874                      DST #: 7

Superior Testers Enterprises LLC  
PO Box 138 Great Bend KS 67530  
1-800-792-6902

Printed: 2012.01.29 @ 08:20:38



# DRILL STEM TEST REPORT

F.G.Holl Company LLC

**30/30S/13W Barber Co.**

9431 East Central Suite #100  
Wichita, Kansas 67206+2563

**Thompson #1-30**

Job Ticket: 18874

**DST#: 7**

ATTN: Renee

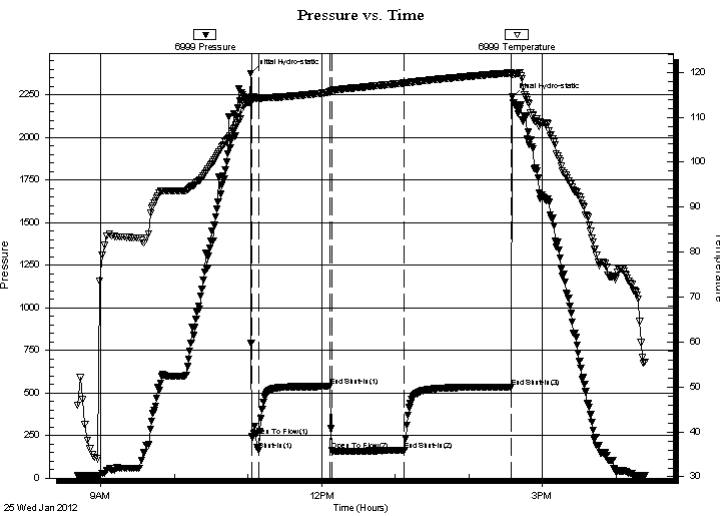
Test Start: 2012.01.25 @ 08:40:00

## GENERAL INFORMATION:

Formation:	<b>Viola</b>			Test Type:	Conventional Bottom Hole (Initial)
Deviated:	No	Whipstock:	ft (KB)	Tester:	Dustin Ellis
Time Tool Opened:	11:03:00			Unit No:	3345-Greatbend-150
Time Test Ended:	16:24:00			Reference Elevations:	1929.00 ft (KB)
<b>Interval:</b>	<b>4529.00 ft (KB) To 4609.00 ft (KB) (TVD)</b>				1918.00 ft (CF)
Total Depth:	4609.00 ft (KB) (TVD)			KB to GR/CF:	11.00 ft
Hole Diameter:	7.88 inches	Hole Condition:	Fair		

<b>Serial #: 6999</b>	<b>Inside</b>			Capacity:	5000.00 psia
Press @ Run Depth:	163.88 psia @	4637.14 ft (KB)		Last Calib.:	2012.01.25
Start Date:	2012.01.25	End Date:	2012.01.25	Time On Btm:	2012.01.25 @ 11:02:00
Start Time:	08:41:00	End Time:	16:24:00	Time Off Btm:	2012.01.25 @ 14:35:30

**TEST COMMENT:** 1st Open 5 minutes Strong blow/ blew bottom of bucket in less than 1 minute.  
1st Shut in 60 minutes Yes blow back  
2nd Open 60 minutes Strong blow blew bottom of buckt instantly.  
2nd Shut in 90 minutes Yes blow back



## PRESSURE SUMMARY

Time (Min.)	Pressure (psia)	Temp (deg F)	Annotation
0	2378.12	113.39	Initial Hydro-static
1	246.53	114.15	Open To Flow (1)
7	163.88	114.25	Shut-In(1)
65	538.60	115.55	End Shut-In(1)
67	164.43	115.93	Open To Flow (2)
126	162.80	117.61	End Shut-In(2)
213	535.73	119.88	End Shut-In(3)
214	2237.35	119.42	Final Hydro-static

## Recovery

Length (ft)	Description	Volume (bbl)
265.00	Drilling Mud 100%	3.72
0.00	Gas to surface.	0.00

## Gas Rates

	Choke (inches)	Pressure (psia)	Gas Rate (Mcf/d)
First Gas Rate	0.75	1.00	15.62
Last Gas Rate	0.75	1.10	17.18
Max. Gas Rate	0.75	1.10	17.18



# DRILL STEM TEST REPORT

F.G.Holl Company LLC

**30/30S/13W Barber Co.**

9431 East Central Suite #100  
Wichita, Kansas 67206+2563

**Thompson #1-30**

Job Ticket: 18874

**DST#: 7**

ATTN: Renee

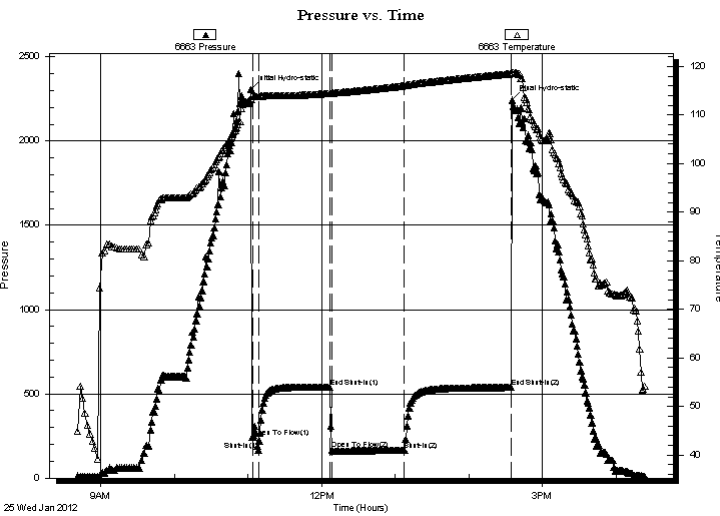
Test Start: 2012.01.25 @ 08:40:00

## GENERAL INFORMATION:

Formation: **Viola**  
 Deviated: No Whipstock: ft (KB)  
 Test Type: Conventional Bottom Hole (Initial)  
 Time Tool Opened: 11:03:00 Tester: Dustin Ellis  
 Time Test Ended: 16:24:00 Unit No: 3345-Greatbend-150  
 Interval: **4529.00 ft (KB) To 4609.00 ft (KB) (TVD)** Reference Elevations: 1929.00 ft (KB)  
 Total Depth: 4609.00 ft (KB) (TVD) 1918.00 ft (CF)  
 Hole Diameter: 7.88 inches Hole Condition: Fair KB to GR/CF: 11.00 ft

**Serial #: 6663 Outside**  
 Press @ Run Depth: 538.13 psia @ 4638.14 ft (KB) Capacity: 5000.00 psia  
 Start Date: 2012.01.25 End Date: 2012.01.25 Last Calib.: 2012.01.25  
 Start Time: 08:41:00 End Time: 16:23:30 Time On Btm: 2012.01.25 @ 11:02:30  
 Time Off Btm: 2012.01.25 @ 14:35:30

**TEST COMMENT:** 1st Open 5 minutes Strong blow/ blew bottom of bucket in less than 1 minute.  
 1st Shut in 60 minutes Yes blow back  
 2nd Open 60 minutes Strong blow blew bottom of buckt instantly.  
 2nd Shut in 90 minutes Yes blow back



## PRESSURE SUMMARY

Time (Min.)	Pressure (psia)	Temp (deg F)	Annotation
0	2307.01	113.29	Initial Hydro-static
1	245.31	113.84	Open To Flow (1)
7	220.80	113.84	Shut-In(1)
64	541.04	114.48	End Shut-In(1)
66	169.17	114.53	Open To Flow (2)
125	165.76	116.03	Shut-In(2)
212	538.13	118.52	End Shut-In(2)
213	2244.20	118.79	Final Hydro-static

## Recovery

Length (ft)	Description	Volume (bbl)
265.00	Drilling Mud 100%	3.72
0.00	Gas to surface.	0.00

## Gas Rates

	Choke (inches)	Pressure (psia)	Gas Rate (Mcf/d)
First Gas Rate	0.75	1.00	15.62
Last Gas Rate	0.75	1.10	17.18
Max. Gas Rate	0.75	1.10	17.18



# DRILL STEM TEST REPORT

**TOOL DIAGRAM**

F.G.Holl Company LLC

**30/30S/13W Barber Co.**

9431 East Central Suite #100  
Wichita, Kansas 67206+2563

**Thompson #1-30**

Job Ticket: 18874

**DST#: 7**

ATTN: Renee

Test Start: 2012.01.25 @ 08:40:00

## Tool Information

Drill Pipe:	Length: 4518.00 ft	Diameter: 3.80 inches	Volume: 63.38 bbl	Tool Weight: 2000.00 lb
Heavy Wt. Pipe:	Length: 0.00 ft	Diameter: 0.00 inches	Volume: 0.00 bbl	Weight set on Packer: 20000.00 lb
Drill Collar:	Length: 0.00 ft	Diameter: 0.00 inches	Volume: 0.00 bbl	Weight to Pull Loose: 72000.00 lb
			Total Volume: 63.38 bbl	Tool Chased 0.00 ft
Drill Pipe Above KB:	17.00 ft			String Weight: Initial 60000.00 lb
Depth to Top Packer:	4529.00 ft			Final 61000.00 lb
Depth to Bottom Packer:	ft			
Interval between Packers:	80.14 ft			
Tool Length:	108.14 ft			
Number of Packers:	2	Diameter: 6.75 inches		

Tool Comments:

Tool Description	Length (ft)	Serial No.	Position	Depth (ft)	Accum. Lengths
------------------	-------------	------------	----------	------------	----------------

Shut-In Tool	5.00			4506.00	
Hydraulic Tool	5.00			4511.00	
Jars	6.00			4517.00	
Safety Joint	2.00			4519.00	
Packer	5.00			4524.00	28.00 Bottom Of Top Packer
Packer	5.00			4529.00	
Anchor	1.00			4530.00	
Change Over Sub	0.75			4530.75	
Drill Pipe	62.64			4593.39	
Change Over Sub	0.75		Inside	4594.14	
Anchor	10.00			4604.14	
Recorder	1.00	6731	Inside	4605.14	
Recorder	1.00	6666	Outside	4606.14	
Bull Plug	3.00			4609.14	80.14 Bottom Packers & Anchor

**Total Tool Length: 108.14**



# DRILL STEM TEST REPORT

## FLUID SUMMARY

F.G.Holl Company LLC

30/30S/13W Barber Co.

9431 East Central Suite #100  
Wichita, Kansas 67206+2563

Thompson #1-30

Job Ticket: 18874

DST#: 7

ATTN: Renee

Test Start: 2012.01.25 @ 08:40:00

### Mud and Cushion Information

Mud Type: Gel Chem  
Mud Weight: 9.00 lb/gal  
Viscosity: 64.00 sec/qt  
Water Loss: 8.79 in<sup>3</sup>  
Resistivity: ohm.m  
Salinity: 4000.00 ppm  
Filter Cake: 1.00 inches

Cushion Type:  
Cushion Length: ft  
Cushion Volume: bbl  
Gas Cushion Type:  
Gas Cushion Pressure: psia

Oil API: deg API  
Water Salinity: ppm

### Recovery Information

Recovery Table

Length ft	Description	Volume bbl
265.00	Drilling Mud 100%	3.717
0.00	Gas to surface.	0.000

Total Length: 265.00 ft      Total Volume: 3.717 bbl

Num Fluid Samples: 0

Num Gas Bombs: 0

Serial #:

Laboratory Name:

Laboratory Location:

Recovery Comments:



# DRILL STEM TEST REPORT

**GAS RATES**

F.G.Holl Company LLC

**30/30S/13W Barber Co.**

9431 East Central Suite #100  
Wichita, Kansas 67206+2563

**Thompson #1-30**

Job Ticket: 18874

**DST#: 7**

ATTN: Renee

Test Start: 2012.01.25 @ 08:40:00

## Gas Rates Information

Temperature: 59 (deg F)  
Relative Density: 0.65  
Z Factor: 0.8

Gas Rates Table

Flow Period	Elapsed Time	Choke (inches)	Pressure (psia)	Gas Rate (Mcf/d)
2	10	0.75	1.00	15.62
2	20	0.75	1.00	15.62
2	30	0.75	1.10	17.18
2	40	0.75	1.10	17.18

