



DRILL STEM TEST REPORT

Prepared For: **F.G.Holl Company LLC**

9431 East Central Suite #100
Wichita, Kansas 67206+2563

ATTN: Renee

Thompson #1-30

30/30S/13W Barber Co.

Start Date: 2012.01.27 @ 01:49:00

End Date: 2012.01.27 @ 10:35:30

Job Ticket #: 18826 DST #: 9

Superior Testers Enterprises LLC
PO Box 138 Great Bend KS 67530
1-800-792-6902

Printed: 2012.01.27 @ 21:18:29



DRILL STEM TEST REPORT

F.G.Holl Company LLC
 9431 East Central Suite #100
 Wichita, Kansas 67206+2563
 ATTN: Renee

30/30S/13W Barber Co.
Thompson #1-30
 Job Ticket: 18826 **DST#: 9**
 Test Start: 2012.01.27 @ 01:49:00

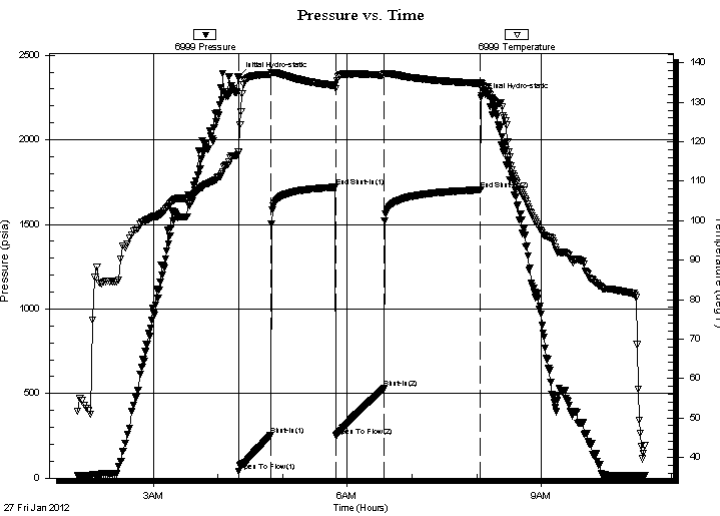
GENERAL INFORMATION:

Formation: **Arbuckle**
 Deviated: No Whipstock: ft (KB)
 Test Type: Conventional Bottom Hole (Initial)
 Time Tool Opened: 04:19:30 Tester: Dustin Ellis
 Time Test Ended: 10:35:30 Unit No: 3345-Great Bend-150
 Interval: **4791.00 ft (KB) To 4800.00 ft (KB) (TVD)** Reference Elevations: 1929.00 ft (KB)
 Total Depth: 4800.00 ft (KB) (TVD) 1918.00 ft (CF)
 Hole Diameter: 7.88 inches Hole Condition: Fair KB to GR/CF: 11.00 ft

Serial #: 6999

Press @ RunDepth: 530.76 psia @ ft (KB) Capacity: 5000.00 psia
 Start Date: 2012.01.27 End Date: 2012.01.27 Last Calib.: 2012.01.27
 Start Time: 01:49:00 End Time: 10:35:30 Time On Btm: 2012.01.27 @ 04:19:00
 Time Off Btm: 2012.01.27 @ 08:04:00

TEST COMMENT: 1st Open 30 minutes Fair building blow built to bottom bucket in 12 minutes
 1st Shut in 60 minutes No blow back
 2nd Open 45 minutes Fair building blow /blew bottom of bucket 7 minutes
 2nd Shut in 90 minutes No blow back



PRESSURE SUMMARY

Time (Min.)	Pressure (psia)	Temp (deg F)	Annotation
0	2371.09	117.36	Initial Hydro-static
1	39.45	117.47	Open To Flow (1)
30	252.61	136.96	Shut-In(1)
90	1719.60	134.18	End Shut-In(1)
91	250.52	133.52	Open To Flow (2)
135	530.76	136.83	Shut-In(2)
225	1704.20	134.78	End Shut-In(2)
225	2248.76	134.93	Final Hydro-static

Recovery

Length (ft)	Description	Volume (bbl)
900.00	Salt w ater 90%Water 10%Mudd	12.62
90.00	Muddy w ater 90%Mud 10% w ater	1.26
0.00	Chlorides 19000	0.00

Gas Rates

	Choke (inches)	Pressure (psia)	Gas Rate (Mcf/d)



DRILL STEM TEST REPORT

F.G.Holl Company LLC

30/30S/13W Barber Co.

9431 East Central Suite #100
Wichita, Kansas 67206+2563

Thompson #1-30

Job Ticket: 18826

DST#: 9

ATTN: Renee

Test Start: 2012.01.27 @ 01:49:00

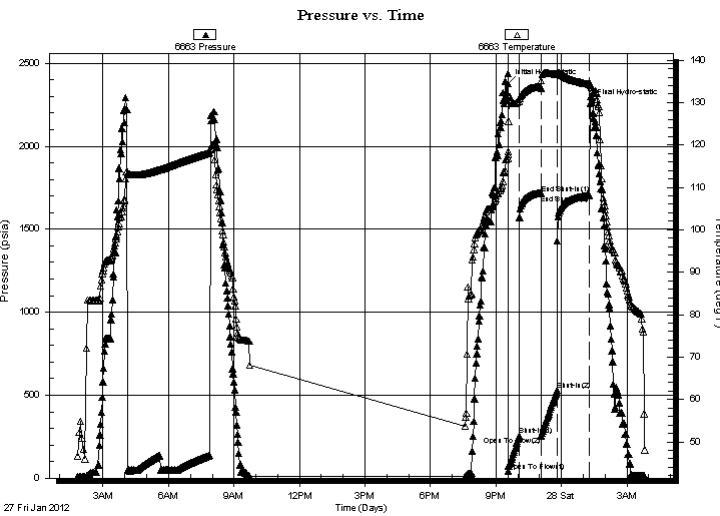
GENERAL INFORMATION:

Formation: **Arbuckle**
 Deviated: No Whipstock: ft (KB)
 Test Type: Conventional Bottom Hole (Initial)
 Time Tool Opened: 04:19:30
 Tester: Dustin Ellis
 Time Test Ended: 10:35:30
 Unit No: 3345-Great Bend-150
 Interval: **4791.00 ft (KB) To 4800.00 ft (KB) (TVD)**
 Reference Elevations: 1929.00 ft (KB)
 Total Depth: 4800.00 ft (KB) (TVD)
 1918.00 ft (CF)
 Hole Diameter: 7.88 inches
 Hole Condition: Fair
 KB to GR/CF: 11.00 ft

Serial #: 6663

Press @ RunDepth: 1705.49 psia @ ft (KB) Capacity: 5000.00 psia
 Start Date: 2012.01.27 End Date: 2012.01.28 Last Calib.: 2012.01.27
 Start Time: 01:49:00 End Time: 03:50:24 Time On Btm: 2012.01.27 @ 21:33:54
 Time Off Btm: 2012.01.28 @ 01:18:54

TEST COMMENT: 1st Open 30 minutes Fair building blow built to bottom bucket in 12 minutes
 1st Shut in 60 minutes No blow back
 2nd Open 45 minutes Fair building blow /blew bottom of bucket 7 minutes
 2nd Shut in 90 minutes No blow back



PRESSURE SUMMARY

Time (Min.)	Pressure (psia)	Temp (deg F)	Annotation
0	2375.99	117.79	Initial Hydro-static
1	44.13	118.48	Open To Flow (1)
30	255.66	130.42	Shut-In(1)
90	1716.57	133.66	End Shut-In(1)
91	253.25	133.41	Open To Flow (2)
135	528.31	136.64	Shut-In(2)
224	1705.49	134.35	End Shut-In(2)
225	2255.71	134.45	Final Hydro-static

Recovery

Length (ft)	Description	Volume (bbl)
900.00	Salt w ater 90%Water 10%Mudd	12.62
90.00	Muddy w ater 90%Mud 10% w ater	1.26
0.00	Chlorides 19000	0.00

Gas Rates

Choke (inches)	Pressure (psia)	Gas Rate (Mcf/d)



DRILL STEM TEST REPORT

TOOL DIAGRAM

F.G.Holl Company LLC

30/30S/13W Barber Co.

9431 East Central Suite #100
Wichita, Kansas 67206+2563

Thompson #1-30

Job Ticket: 18826

DST#: 9

ATTN: Renee

Test Start: 2012.01.27 @ 01:49:00

Tool Information

Drill Pipe:	Length: 4776.00 ft	Diameter: 3.80 inches	Volume: 66.99 bbl	Tool Weight: 2000.00 lb
Heavy Wt. Pipe:	Length: 0.00 ft	Diameter: 0.00 inches	Volume: 0.00 bbl	Weight set on Packer: 20000.00 lb
Drill Collar:	Length: 0.00 ft	Diameter: 0.00 inches	Volume: 0.00 bbl	Weight to Pull Loose: 70000.00 lb
			<u>Total Volume: 66.99 bbl</u>	Tool Chased 0.00 ft
Drill Pipe Above KB:	6.90 ft			String Weight: Initial 60000.00 lb
Depth to Top Packer:	4791.00 ft			Final 65000.00 lb
Depth to Bottom Packer:	ft			
Interval between Packers:	6.34 ft			
Tool Length:	28.24 ft			
Number of Packers:	2	Diameter: 6.75 inches		

Tool Comments:

Tool Description	Length (ft)	Serial No.	Position	Depth (ft)	Accum. Lengths
------------------	-------------	------------	----------	------------	----------------

P.O. Sub	0.31			4769.41	
C.O. Sub	0.31			4769.72	
P.O. Sub	0.31			4770.03	
Recorder	1.80		Fluid	4771.83	
Conv. S.I. Tool	1.58			4773.41	
Sampler	0.91			4774.32	
HMV	2.10			4776.42	
Recorder	1.80		Inside	4778.22	
Telemetry Tool	7.01			4785.23	
Jars	1.85			4787.08	
Safety Joint	0.72			4787.80	
Packer	1.78			4789.58	21.90 Bottom Of Top Packer
Packer	1.42			4791.00	
Stubb	0.36			4791.36	
Recorder Carrier	2.20			4793.56	
Recorder	0.00	6999	Outside	4793.56	
Recorder	0.00	6663	Outside	4793.56	
Perforations	3.00			4796.56	
Blank Spacing	0.00			4796.56	
Bullnose	0.78			4797.34	6.34 Bottom Packers & Anchor

Total Tool Length: 28.24



DRILL STEM TEST REPORT

FLUID SUMMARY

F.G.Holl Company LLC

30/30S/13W Barber Co.

9431 East Central Suite #100
Wichita, Kansas 67206+2563

Thompson #1-30

Job Ticket: 18826

DST#: 9

ATTN: Renee

Test Start: 2012.01.27 @ 01:49:00

Mud and Cushion Information

Mud Type: Gel Chem

Mud Weight: 9.00 lb/gal

Viscosity: 54.00 sec/qt

Water Loss: 8.80 in³

Resistivity: 0.40 ohm.m

Salinity: 3000.00 ppm

Filter Cake: 1.00 inches

Cushion Type:

Cushion Length: ft

Cushion Volume: bbl

Gas Cushion Type:

Gas Cushion Pressure: psia

Oil API:

Water Salinity: deg API

ppm

Recovery Information

Recovery Table

Length ft	Description	Volume bbl
900.00	Salt w ater 90%Water 10%Mudd	12.625
90.00	Muddy w ater 90%Mud 10% w ater	1.262
0.00	Chlorides 19000	0.000

Total Length: 990.00 ft Total Volume: 13.887 bbl

Num Fluid Samples: 0

Num Gas Bombs: 0

Serial #:

Laboratory Name:

Laboratory Location:

Recovery Comments:

