



**TRILOBITE TESTING, INC.**

# DRILL STEM TEST REPORT

John O Farmer

**15 5s 20w Phillips KS**

Box 352  
Russell KS

**States A #1**

Job Ticket: 47956

**DST#: 5**

ATTN: John, Matt, Austin

Test Start: 2012.06.20 @ 09:26:15

## GENERAL INFORMATION:

Formation: **Arbuckle**

Deviated: No Whipstock: ft (KB)

Time Tool Opened: 10:43:05

Time Test Ended: 15:38:45

Test Type: Conventional Bottom Hole (Initial)

Tester: Dustin Rash

Unit No: 38

**Interval: 3546.00 ft (KB) To 3572.00 ft (KB) (TVD)**

Reference Elevations: 3135.00 ft (KB)

Total Depth: 3618.00 ft (KB) (TVD)

3130.00 ft (CF)

Hole Diameter: 7.88 inches Hole Condition: Fair

KB to GR/CF: 5.00 ft

**Serial #: 8354 Inside**

Press @ Run Depth: 448.24 psig @ 3547.00 ft (KB)

Capacity: 8000.00 psig

Start Date: 2012.06.20 End Date: 2012.06.20

Last Calib.: 2012.06.20

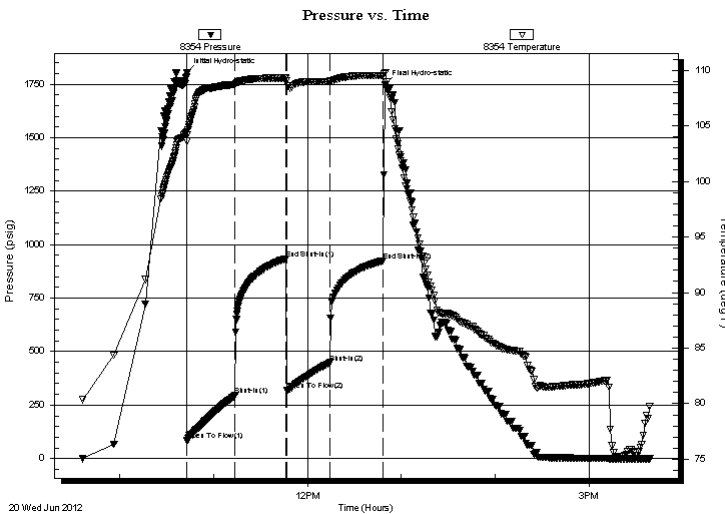
Start Time: 09:36:15 End Time: 15:38:45

Time On Btm: 2012.06.20 @ 10:42:55

Time Off Btm: 2012.06.20 @ 12:49:45

**TEST COMMENT:** IF-Strong building blow . BOB in 2 minutes.  
ISI-Return @ 1 minute 30 seconds. Built to 5 inches.  
FF-Strong building blow . BOB in 4 minutes.  
FSI-Return @ 2 minutes. Built to 3 inches.

## PRESSURE SUMMARY



Time (Min.)	Pressure (psig)	Temp (deg F)	Annotation
0	1803.18	104.43	Initial Hydro-static
1	85.84	103.60	Open To Flow (1)
31	295.27	108.71	Shut-In(1)
64	934.43	109.30	End Shut-In(1)
64	319.71	109.09	Open To Flow (2)
92	448.24	108.98	Shut-In(2)
126	923.92	109.51	End Shut-In(2)
127	1748.84	109.80	Final Hydro-static

## Recovery

Length (ft)	Description	Volume (bbl)
1140.00	25% Gas/70% Oil/5% Water	14.90
150.00	60% Gas/35% Oil/5% Water	2.10
0.00	150' G.I.P.	0.00

## Gas Rates

	Choke (inches)	Pressure (psig)	Gas Rate (Mcf/d)





**TRILOBITE  
TESTING, INC.**

# DRILL STEM TEST REPORT

**FLUID SUMMARY**

John O Farmer

**15 5s 20w Phillips KS**

Box 352  
Russell KS

**States A #1**

Job Ticket: 47956

**DST#: 5**

ATTN: John, Matt, Austin

Test Start: 2012.06.20 @ 09:26:15

## Mud and Cushion Information

Mud Type: Gel Chem

Cushion Type:

Oil API:

29 deg API

Mud Weight: 9.00 lb/gal

Cushion Length:

ft

Water Salinity:

ppm

Viscosity: 60.00 sec/qt

Cushion Volume:

bbbl

Water Loss: 8.79 in<sup>3</sup>

Gas Cushion Type:

Resistivity: ohm.m

Gas Cushion Pressure:

psig

Salinity: 2500.00 ppm

Filter Cake: inches

## Recovery Information

Recovery Table

Length ft	Description	Volume bbl
1140.00	25%Gas/70%Oil/5%Water	14.898
150.00	60%Gas/35%Oil/5%Water	2.104
0.00	150' G.I.P.	0.000

Total Length: 1290.00 ft      Total Volume: 17.002 bbl

Num Fluid Samples: 0

Num Gas Bombs: 0

Serial #:

Laboratory Name:

Laboratory Location:

Recovery Comments:

Serial #: 8354

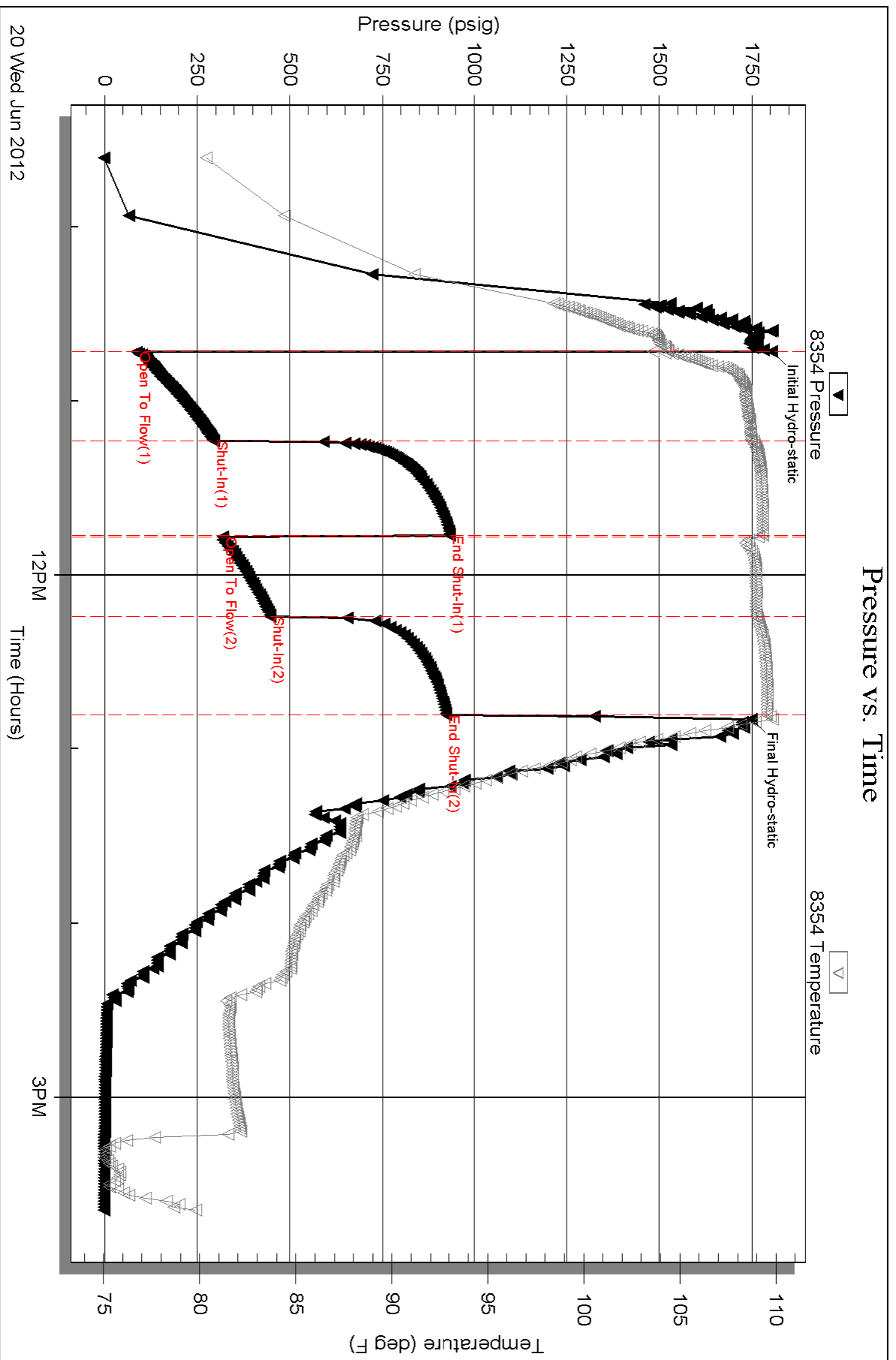
Inside

John O Farmer

States A #1

DST Test Number: 5

### Pressure vs. Time



Triobite Testing, Inc

Ref. No: 47956

Printed: 2012.06.20 @ 16:33:18

Serial #: 8653

Below (Straddled) Farmer

States A #1

DST Test Number: 5

