



**TRILOBITE TESTING, INC.**

# DRILL STEM TEST REPORT

Berexco LLC  
 2020 N. Bramblewood  
 Wichita Ks. 67206  
 ATTN: Ed Grieves

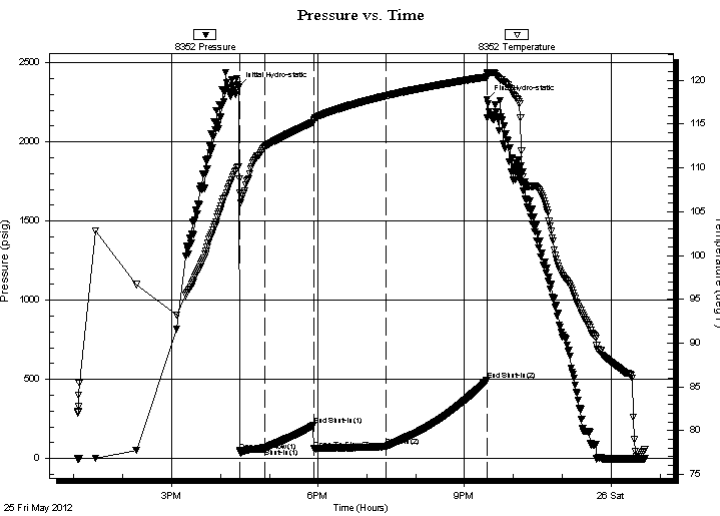
**5-30s-16w Kiowa Ks.**  
**Gary#1-5**  
 Job Ticket: 47539 **DST#: 3**  
 Test Start: 2012.05.25 @ 13:04:25

## GENERAL INFORMATION:

Formation: **Miss.**  
 Deviated: No Whipstock: ft (KB)  
 Time Tool Opened: 16:23:25  
 Time Test Ended: 00:57:10  
 Interval: **4630.00 ft (KB) To 4690.00 ft (KB) (TVD)**  
 Total Depth: 4690.00 ft (KB) (TVD)  
 Hole Diameter: 7.88 inches Hole Condition: Poor  
 Test Type: Conventional Bottom Hole (Reset)  
 Tester: Gary Pevoteaux  
 Unit No: 56  
 Reference Elevations: 1912.00 ft (KB)  
 1899.00 ft (CF)  
 KB to GR/CF: 13.00 ft

**Serial #: 8352 Outside**  
 Press @ Run Depth: 75.46 psig @ 4631.00 ft (KB) Capacity: 8000.00 psig  
 Start Date: 2012.05.25 End Date: 2012.05.26 Last Calib.: 2012.05.26  
 Start Time: 13:04:30 End Time: 00:42:10 Time On Btm: 2012.05.25 @ 16:22:10  
 Time Off Btm: 2012.05.25 @ 21:27:55

**TEST COMMENT:** IF: Weak blow . Increase to 3".  
 IS: No blow .  
 FF: Weak blow . Increase to 3 1/2".  
 FS: No blow .



## PRESSURE SUMMARY

Time (Min.)	Pressure (psig)	Temp (deg F)	Annotation
0	2349.49	110.12	Initial Hydro-static
2	45.71	108.78	Open To Flow (1)
32	62.45	112.33	Shut-In(1)
92	208.43	115.21	End Shut-In(1)
93	61.37	115.33	Open To Flow (2)
182	75.46	118.22	Shut-In(2)
305	493.44	120.38	End Shut-In(2)
306	2265.90	120.78	Final Hydro-static

## Recovery

Length (ft)	Description	Volume (bbl)
115.00	SOCWM 4%o 14%w 82%m	0.57
0.00	Trace of GIP	0.00

\* Recovery from multiple tests

## Gas Rates

Choke (inches)	Pressure (psig)	Gas Rate (Mcf/d)





**TRILOBITE  
TESTING, INC.**

# DRILL STEM TEST REPORT

**FLUID SUMMARY**

Berexco LLC  
2020 N. Bramblewood  
Wichita Ks. 67206  
ATTN: Ed Grieves

**5-30s-16w Kiowa Ks.**  
**Gary#1-5**  
Job Ticket: 47539      **DST#: 3**  
Test Start: 2012.05.25 @ 13:04:25

## Mud and Cushion Information

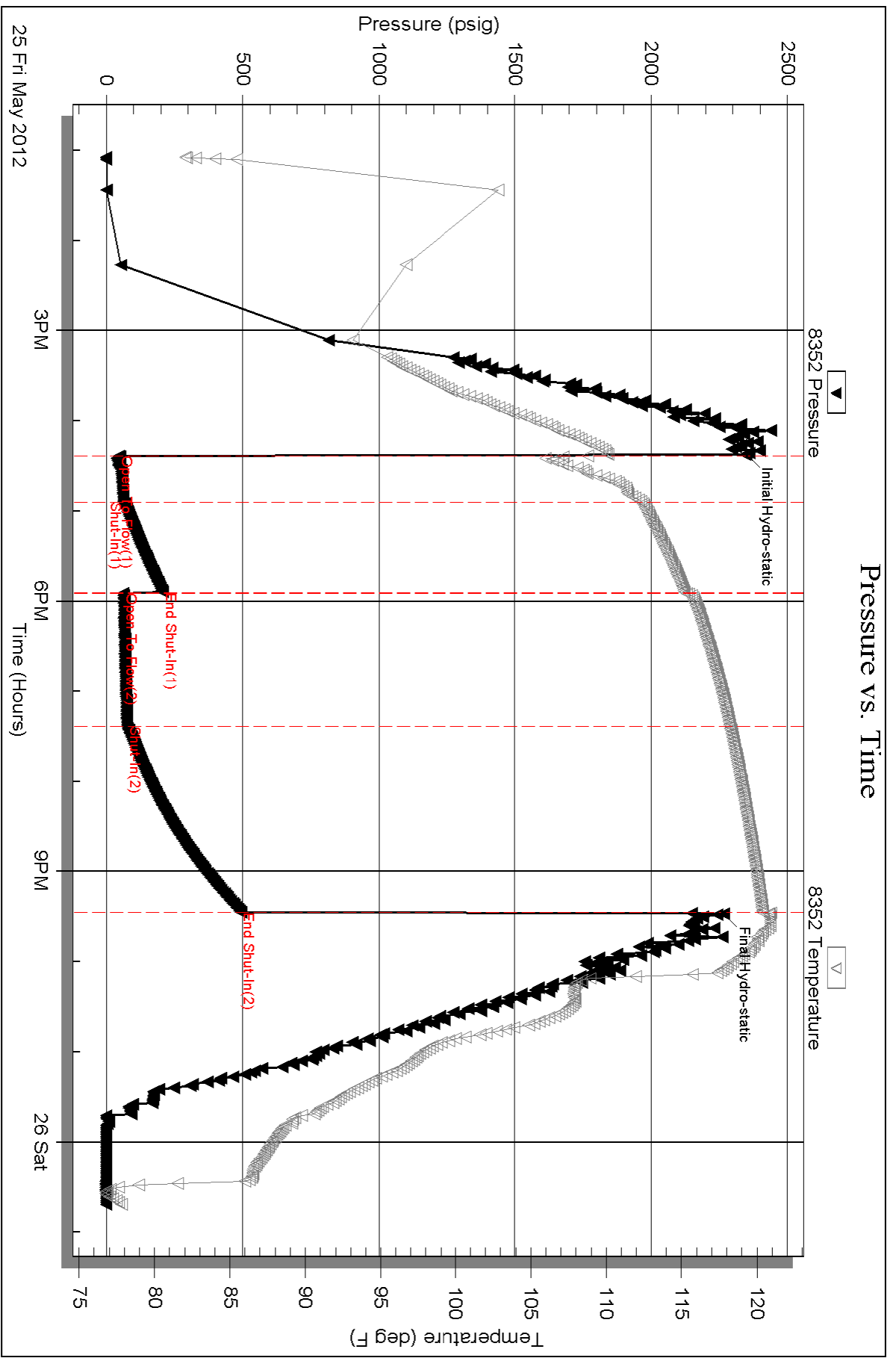
Mud Type: Gel Chem	Cushion Type:	Oil API:	deg API
Mud Weight: 9.00 lb/gal	Cushion Length: ft	Water Salinity:	11100 ppm
Viscosity: 66.00 sec/qt	Cushion Volume: bbl		
Water Loss: 21.19 in <sup>3</sup>	Gas Cushion Type:		
Resistivity: 0.00 ohm.m	Gas Cushion Pressure: psig		
Salinity: 11100.00 ppm			
Filter Cake: 0.20 inches			

## Recovery Information

Recovery Table

Length ft	Description	Volume bbl
115.00	SOCWM 4%o 14%w 82%m	0.566
0.00	Trace of GIP	0.000

Total Length: 115.00 ft      Total Volume: 0.566 bbl  
 Num Fluid Samples: 0      Num Gas Bombs: 0      Serial #: none  
 Laboratory Name:      Laboratory Location:  
 Recovery Comments:



Serial #: 8370

Inside

Berexco LLC

Gary#1-5

DST Test Number: 3

