



DRILL STEM TEST REPORT

Prepared For: **F.G.Holl Company L.L.C.**

9431 East Central Suite 100
Wichita, Kansas 67206-2563

ATTN: Ryan Greenbaum

mAUNEY #1-6

6-21S-15W bARTON

Start Date: 2012.10.17 @ 00:00:00

End Date: 2012.10.17 @ 00:00:00

Job Ticket #: 16884 DST #: 1

Superior Testers Enterprises LLC
PO Box 138 Great Bend KS 67530
1-800-792-6902

Printed: 2012.10.17 @ 09:29:45



DRILL STEM TEST REPORT

F.G.Holl Company L.L.C.

6-21S-15W bARTON

9431 East Central Suite 100
Wichita, Kansas 67206-2563

mAUNEY #1-6

Job Ticket: 16884

DST#: 1

ATTN: Ryan Greenbaum

Test Start: 2012.10.17 @ 00:00:00

GENERAL INFORMATION:

Formation: **Arbuckle**

Deviated: No Whipstock: ft (KB)

Time Tool Opened: 00:00:00

Time Test Ended: 00:00:00

Test Type: Conventional Bottom Hole (Initial)

Tester: Gene Budi

Unit No: 3320

Interval: 3761.00 ft (KB) To 3767.00 ft (KB) (TVD)

Reference Elevations: 1966.00 ft (KB)

Total Depth: 3767.00 ft (KB) (TVD)

1958.00 ft (CF)

Hole Diameter: 7.88 inches Hole Condition: Fair

KB to GR/CF: 8.00 ft

Serial #: 6731 Inside

Press @ Run Depth: 603.34 psia @ 3763.00 ft (KB)

Capacity: 5000.00 psia

Start Date: 2012.10.17

End Date: 2012.10.17

Last Calib.: 2012.10.17

Start Time: 04:00:00

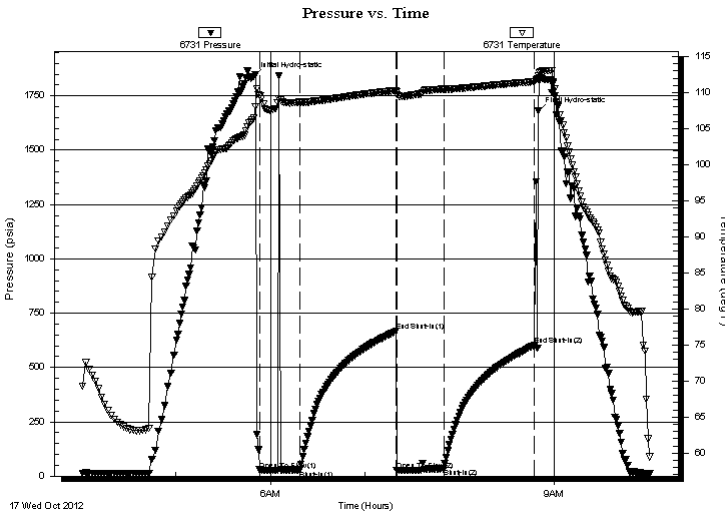
End Time: 10:00:30

Time On Btm: 2012.10.17 @ 05:49:30

Time Off Btm: 2012.10.17 @ 08:50:00

TEST COMMENT: 1st Opening 30 Minutes-Strong Blow decreased to a weak blow
1st Shut-In 60 Minutes-No blow back
2nd Opening 30 Minutes-Good blow decreased to a weak blow
2nd Shut-In 60 Minutes-No blow back

PRESSURE SUMMARY



Time (Min.)	Pressure (psia)	Temp (deg F)	Annotation
0	1838.83	106.45	Initial Hydro-static
4	28.55	109.57	Open To Flow (1)
29	28.96	108.69	Shut-In(1)
90	666.30	110.31	End Shut-In(1)
91	26.10	110.13	Open To Flow (2)
121	35.40	110.49	Shut-In(2)
178	603.34	111.55	End Shut-In(2)
181	1679.31	112.32	Final Hydro-static

Recovery

Length (ft)	Description	Volume (bbl)
750.00	Gas in the pipe	10.52
20.00	Mud	0.28

Gas Rates

	Choke (inches)	Pressure (psia)	Gas Rate (Mcf/d)



DRILL STEM TEST REPORT

F.G.Holl Company L.L.C.

6-21S-15W bARTON

9431 East Central Suite 100
Wichita, Kansas 67206-2563

mAUNEY #1-6

Job Ticket: 16884

DST#: 1

ATTN: Ryan Greenbaum

Test Start: 2012.10.17 @ 00:00:00

GENERAL INFORMATION:

Formation: **Arbuckle**

Deviated: No Whipstock: ft (KB)

Time Tool Opened: 00:00:00

Time Test Ended: 00:00:00

Test Type: Conventional Bottom Hole (Initial)

Tester: Gene Budi

Unit No: 3320

Interval: 3761.00 ft (KB) To 3767.00 ft (KB) (TVD)

Reference Elevations: 1966.00 ft (KB)

Total Depth: 3767.00 ft (KB) (TVD)

1958.00 ft (CF)

Hole Diameter: 7.88 inches Hole Condition: Fair

KB to GR/CF: 8.00 ft

Serial #: 8159 Outside

Press @ RunDepth: 605.59 psia @ 3764.00 ft (KB)

Capacity: 5000.00 psia

Start Date: 2012.10.17

End Date: 2012.10.17

Last Calib.: 2012.10.17

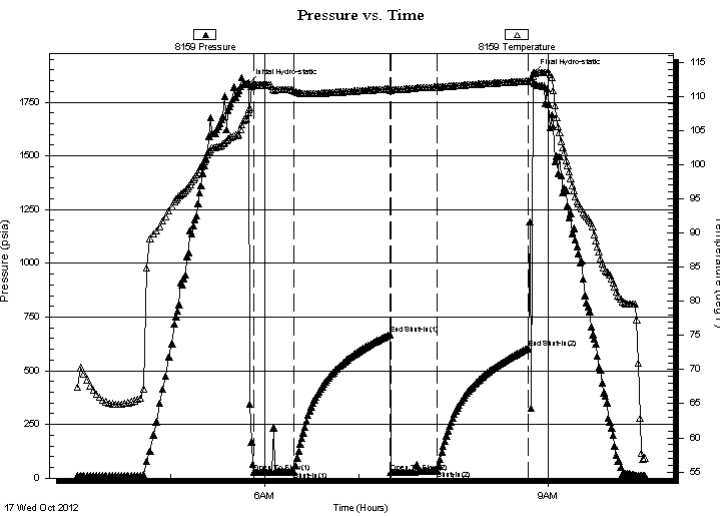
Start Time: 04:00:00

End Time: 10:01:30

Time On Btm: 2012.10.17 @ 05:50:00

Time Off Btm: 2012.10.17 @ 08:50:30

TEST COMMENT: 1st Opening 30 Minutes-Strong Blow decreased to a weak blow
 1st Shut-In 60 Minutes-No blow back
 2nd Opening 30 Minutes-Good blow decreased to a weak blow
 2nd Shut-In 60 Minutes-No blow back



PRESSURE SUMMARY

Time (Min.)	Pressure (psia)	Temp (deg F)	Annotation
0	1838.00	108.15	Initial Hydro-static
3	26.86	111.65	Open To Flow (1)
29	29.56	110.81	Shut-In(1)
90	668.60	111.09	End Shut-In(1)
90	26.39	110.92	Open To Flow (2)
120	33.78	111.35	Shut-In(2)
178	605.59	112.23	End Shut-In(2)
181	1884.81	112.98	Final Hydro-static

Recovery

Length (ft)	Description	Volume (bbl)
750.00	Gas in the pipe	10.52
20.00	Mud	0.28

Gas Rates

	Choke (inches)	Pressure (psia)	Gas Rate (Mcf/d)



DRILL STEM TEST REPORT

TOOL DIAGRAM

F.G.Holl Company L.L.C.

6-21S-15W bARTON

9431 East Central Suite 100
Wichita, Kansas 67206-2563

mAUNEY #1-6

Job Ticket: 16884

DST#: 1

ATTN: Ryan Greenbaum

Test Start: 2012.10.17 @ 00:00:00

Tool Information

Drill Pipe:	Length: 3760.00 ft	Diameter: 3.80 inches	Volume: 52.74 bbl	Tool Weight: 2000.00 lb
Heavy Wt. Pipe:	Length: 0.00 ft	Diameter: 0.00 inches	Volume: 0.00 bbl	Weight set on Packer: 20000.00 lb
Drill Collar:	Length: 0.00 ft	Diameter: 0.00 inches	Volume: 0.00 bbl	Weight to Pull Loose: 55000.00 lb
			<u>Total Volume: 52.74 bbl</u>	Tool Chased 5.00 ft
Drill Pipe Above KB:	27.00 ft			String Weight: Initial 40000.00 lb
Depth to Top Packer:	3761.00 ft			Final 40000.00 lb
Depth to Bottom Packer:	ft			
Interval between Packers:	6.00 ft			
Tool Length:	34.00 ft			
Number of Packers:	2	Diameter: 6.75 inches		

Tool Comments:

Tool Description	Length (ft)	Serial No.	Position	Depth (ft)	Accum. Lengths
Shut-In Tool	5.00			3738.00	
Hydraulic Tool	5.00			3743.00	
Jars	6.00			3749.00	
Safety Joint	2.00			3751.00	
Packer	5.00			3756.00	28.00 Bottom Of Top Packer
Packer	5.00			3761.00	
Perforations	1.00			3762.00	
Recorder	1.00	6731	Inside	3763.00	
Recorder	1.00	8159	Outside	3764.00	
Bullnose	3.00			3767.00	6.00 Bottom Packers & Anchor
Total Tool Length:	34.00				



DRILL STEM TEST REPORT

FLUID SUMMARY

F.G.Holl Company L.L.C.

6-21S-15W bARTON

9431 East Central Suite 100
Wichita, Kansas 67206-2563

mAUNEY #1-6

Job Ticket: 16884

DST#: 1

ATTN: Ryan Greenbaum

Test Start: 2012.10.17 @ 00:00:00

Mud and Cushion Information

Mud Type: Gel Chem

Mud Weight: 10.00 lb/gal

Viscosity: 52.00 sec/qt

Water Loss: 11.20 in³

Resistivity: ohm.m

Salinity: 5500.00 ppm

Filter Cake: 1.00 inches

Cushion Type:

Cushion Length: ft

Cushion Volume: bbl

Gas Cushion Type:

Gas Cushion Pressure: psia

Oil API:

Water Salinity: ppm

deg API

Recovery Information

Recovery Table

Length ft	Description	Volume bbl
750.00	Gas in the pipe	10.521
20.00	Mud	0.281

Total Length: 770.00 ft Total Volume: 10.802 bbl

Num Fluid Samples: 0

Num Gas Bombs: 0

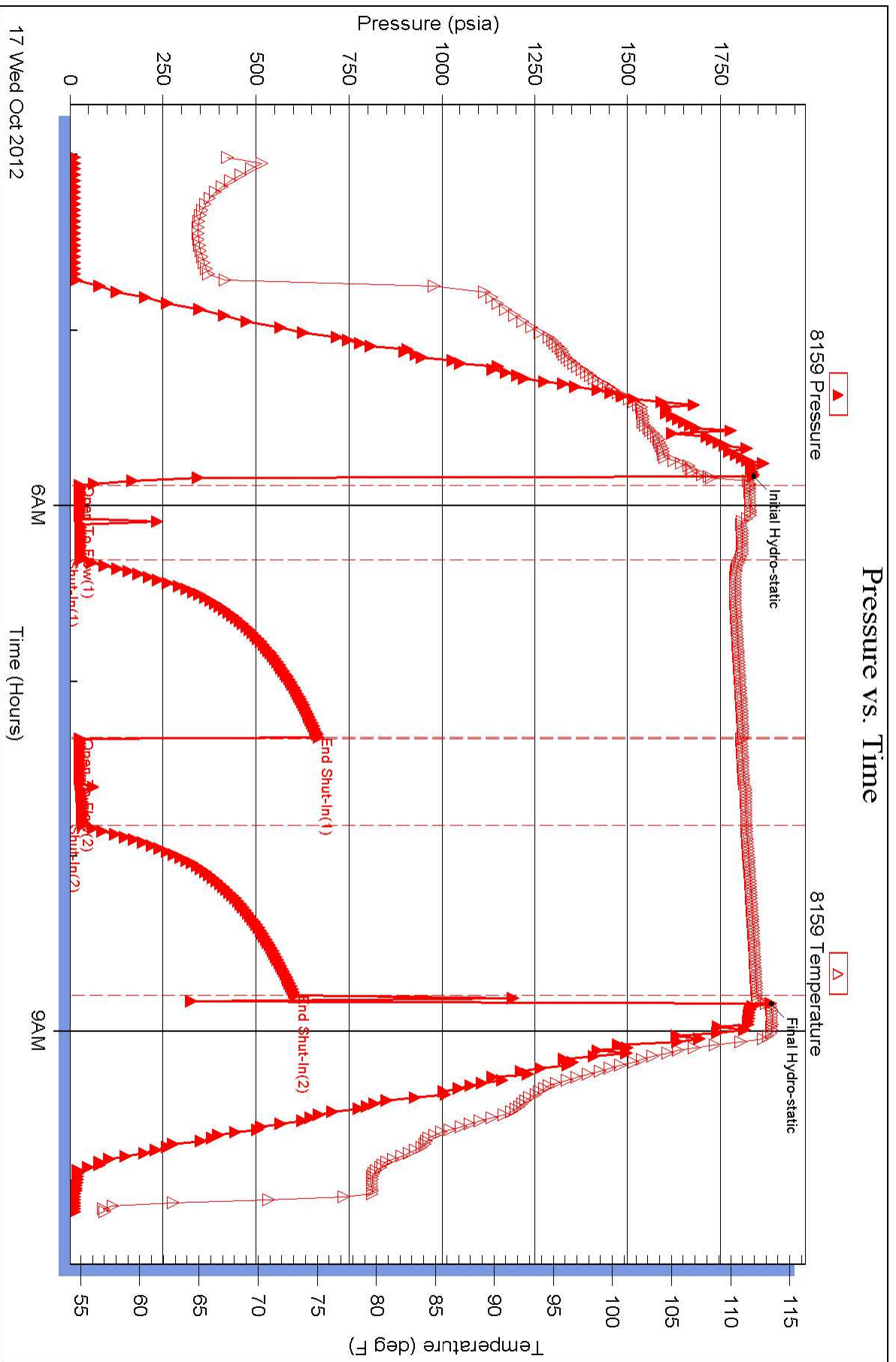
Serial #:

Laboratory Name:

Laboratory Location:

Recovery Comments:

Pressure vs. Time



17 Wed Oct 2012

6AM

9AM

Pressure vs. Time

