



DRILL STEM TEST REPORT

Prepared For: **F.G Holl Company L.L.C**

9431E Central ste 100 Wichita KS
67206+2563

ATTN: Rene Husted

Axman 'A' Unit #1-23

23-17-15 Barton

Start Date: 2012.10.14 @ 06:00:00

End Date: 2012.10.14 @ 12:27:00

Job Ticket #: 16880 DST #: 4

Superior Testers Enterprises LLC
PO Box 138 Great Bend KS 67530
1-800-792-6902

Printed: 2012.10.14 @ 22:53:06



DRILL STEM TEST REPORT

F.G Holl Company L.L.C

23-17-15 Barton

9431E Central ste 100 Wichita KS 67206+2563

Axman 'A' Unit #1-23

ATTN: Rene Husted

Job Ticket: 16880

DST#: 4

Test Start: 2012.10.14 @ 06:00:00

GENERAL INFORMATION:

Formation: **Kansas City "J"**

Deviated: No Whipstock: ft (KB)

Time Tool Opened: 07:35:00

Time Test Ended: 12:27:00

Test Type: Conventional Bottom Hole (Initial)

Tester: Gene Budig

Unit No: 3320-52

Interval: 3419.00 ft (KB) To 3434.00 ft (KB) (TVD)

Reference Elevations: 1966.00 ft (KB)

Total Depth: 3434.00 ft (KB) (TVD)

1954.00 ft (CF)

Hole Diameter: 7.88 inches Hole Condition: Fair

KB to GR/CF: 12.00 ft

Serial #: 8159 Outside

Press @ RunDepth: 59.65 psia @ 3431.00 ft (KB)

Capacity: 5000.00 psia

Start Date: 2012.10.14

End Date: 2012.10.14

Last Calib.: 2012.10.14

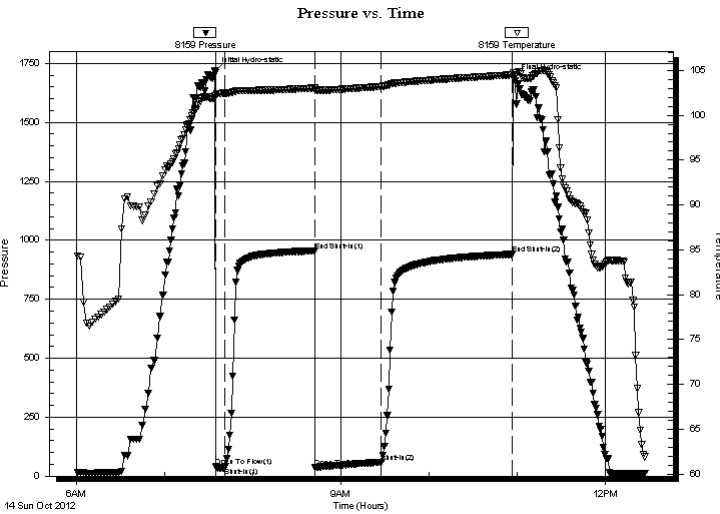
Start Time: 06:00:00

End Time: 12:27:00

Time On Btm: 2012.10.14 @ 07:34:00

Time Off Btm: 2012.10.14 @ 10:57:30

TEST COMMENT: 1st Opening 5 Minutes-Good blow built to the bottom of a 5 gallon bucket in 5 minutes
 1st Shut-In 60 Minutes-No blow back
 2nd Opening 45 Minutes-Good blow built to the bottom of a 5 gallon bucket in 1 minute
 2nd Shut-In 90 Minutes-No blow back



PRESSURE SUMMARY

Time (Min.)	Pressure (psia)	Temp (deg F)	Annotation
0	1716.85	101.92	Initial Hydro-static
1	40.01	102.14	Open To Flow (1)
7	35.62	102.46	Shut-In(1)
68	955.36	103.04	End Shut-In(1)
69	38.10	102.81	Open To Flow (2)
114	59.65	103.21	Shut-In(2)
203	940.52	104.51	End Shut-In(2)
204	1685.11	104.71	Final Hydro-static

Recovery

Length (ft)	Description	Volume (bbl)
500.00	Gas in the pipe	7.01
40.00	Muddy Froty Oil	0.56
35.00	Clean Gassy Oil	0.49

Gas Rates

	Choke (inches)	Pressure (psia)	Gas Rate (Mcf/d)



DRILL STEM TEST REPORT

F.G Holl Company L.L.C

23-17-15 Barton

9431E Central ste 100 Wichita KS 67206+2563

Axman 'A' Unit #1-23

ATTN: Rene Hustedad

Job Ticket: 16880

DST#: 4

Test Start: 2012.10.14 @ 06:00:00

GENERAL INFORMATION:

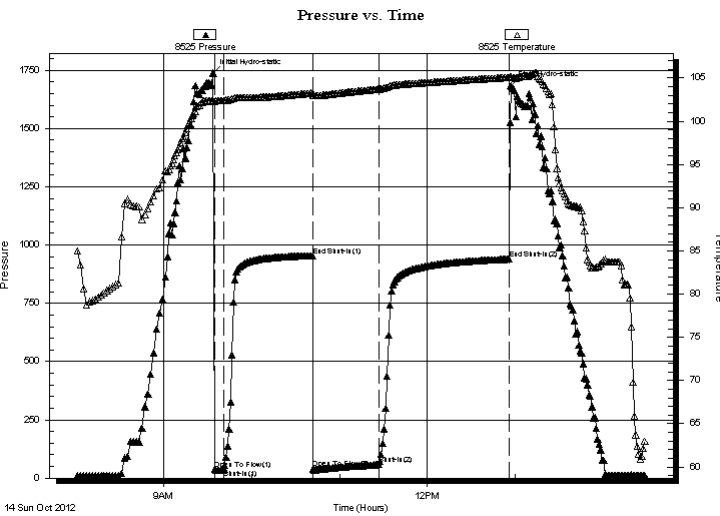
Formation: Kansas City "J"
Deviated: No **Whipstock:** ft (KB)
Time Tool Opened: 07:35:00
Time Test Ended: 12:27:00
Interval: 3419.00 ft (KB) To 3434.00 ft (KB) (TVD)
Total Depth: 3434.00 ft (KB) (TVD)
Hole Diameter: 7.88 inches **Hole Condition:** Fair
Test Type: Conventional Bottom Hole (Initial)
Tester: Gene Budig
Unit No: 3320-52
Reference Elevations: 1966.00 ft (KB)
 1954.00 ft (CF)
KB to GR/CF: 12.00 ft

Serial #: 8525

Inside

Press @ RunDepth: 939.79 psia @ 3430.00 ft (KB) **Capacity:** 5000.00 psia
Start Date: 2012.10.14 **End Date:** 2012.10.14 **Last Calib.:** 2012.10.14
Start Time: 08:00:00 **End Time:** 14:28:30 **Time On Btm:** 2012.10.14 @ 09:33:30
Time Off Btm: 2012.10.14 @ 12:57:00

TEST COMMENT: 1st Opening 5 Minutes-Good blow built to the bottom of a 5 gallon bucket in 5 minutes
 1st Shut-In 60 Minutes-No blow back
 2nd Opening 45 Minutes-Good blow built to the bottom of a 5 gallon bucket in 1 minute
 2nd Shut-In 90 Minutes-No blow back



PRESSURE SUMMARY

Time (Min.)	Pressure (psia)	Temp (deg F)	Annotation
0	1737.03	102.34	Initial Hydro-static
1	38.17	102.25	Open To Flow (1)
8	38.73	102.42	Shut-In(1)
68	954.59	103.27	End Shut-In(1)
69	40.16	103.01	Open To Flow (2)
114	58.34	103.72	Shut-In(2)
203	939.79	105.07	End Shut-In(2)
204	1684.25	105.12	Final Hydro-static

Recovery

Length (ft)	Description	Volume (bbl)
500.00	Gas in the pipe	7.01
40.00	Muddy Froty Oil	0.56
35.00	Clean Gassy Oil	0.49

Gas Rates

	Choke (inches)	Pressure (psia)	Gas Rate (Mcf/d)



DRILL STEM TEST REPORT

FLUID SUMMARY

F.G Holl Company L.L.C

23-17-15 Barton

9431E Central ste 100 Wichita KS 67206+2563

Axman 'A' Unit #1-23

Job Ticket: 16880

DST#: 4

ATTN: Rene Husted

Test Start: 2012.10.14 @ 06:00:00

Mud and Cushion Information

Mud Type: Gel Chem

Cushion Type:

Oil API:

deg API

Mud Weight: 10.00 lb/gal

Cushion Length:

ft

Water Salinity:

ppm

Viscosity: 70.00 sec/qt

Cushion Volume:

bbbl

Water Loss: 10.20 in³

Gas Cushion Type:

Resistivity: ohm.m

Gas Cushion Pressure:

psia

Salinity: 8000.00 ppm

Filter Cake: 1.00 inches

Recovery Information

Recovery Table

Length ft	Description	Volume bbl
500.00	Gas in the pipe	7.014
40.00	Muddy Froty Oil	0.561
35.00	Clean Gassy Oil	0.491

Total Length: 575.00 ft

Total Volume: 8.066 bbl

Num Fluid Samples: 0

Num Gas Bombs: 0

Serial #:

Laboratory Name:

Laboratory Location:

Recovery Comments:



DRILL STEM TEST REPORT

TOOL DIAGRAM

F.G Holl Company L.L.C

23-17-15 Barton

9431E Central ste 100 Wichita KS 67206+2563

Axman 'A' Unit #1-23

Job Ticket: 16880

DST#: 4

ATTN: Rene Husted

Test Start: 2012.10.14 @ 06:00:00

Tool Information

Drill Pipe:	Length: 3407.00 ft	Diameter: 3.80 inches	Volume: 47.79 bbl	Tool Weight: 2000.00 lb
Heavy Wt. Pipe:	Length: 0.00 ft	Diameter: 0.00 inches	Volume: 0.00 bbl	Weight set on Packer: 20000.00 lb
Drill Collar:	Length: 0.00 ft	Diameter: 0.00 inches	Volume: 0.00 bbl	Weight to Pull Loose: 72000.00 lb
			<u>Total Volume: 47.79 bbl</u>	Tool Chased 0.00 ft
Drill Pipe Above KB:	16.00 ft			String Weight: Initial 49000.00 lb
Depth to Top Packer:	3419.00 ft			Final 52000.00 lb
Depth to Bottom Packer:	ft			
Interval between Packers:	15.00 ft			
Tool Length:	43.00 ft			
Number of Packers:	2	Diameter: 6.75 inches		
Tool Comments:				

Tool Description	Length (ft)	Serial No.	Position	Depth (ft)	Accum. Lengths
------------------	-------------	------------	----------	------------	----------------

Shut-In Tool	5.00			3396.00	
Hydraulic Tool	5.00			3401.00	
Jars	6.00			3407.00	
Safety Joint	2.00			3409.00	
Packer	5.00			3414.00	28.00 Bottom Of Top Packer
Packer	5.00			3419.00	
Perforations	10.00			3429.00	
Recorder	1.00	8525	Inside	3430.00	
Recorder	1.00	8159	Outside	3431.00	
Bullnose	3.00			3434.00	15.00 Bottom Packers & Anchor
Total Tool Length:	43.00				

Pressure vs. Time

