



DRILL STEM TEST REPORT

Prepared For: **FIML Natural Resources LLC**

410 17th St. STE 900
Denver CO. 80202

ATTN: Gary Doke / Jim Musg

Herbel #11B-29-933

24-9s-33w Thomas,KS

Start Date: 2012.11.02 @ 07:02:00

End Date: 2012.11.02 @ 10:20:55

Job Ticket #: 49903 DST #: 1

Trilobite Testing, Inc
PO Box 362 Hays, KS 67601
ph: 785-625-4778 fax: 785-625-5620

Printed: 2012.11.15 @ 14:14:25



**TRILOBITE
TESTING, INC.**

DRILL STEM TEST REPORT

TOOL DIAGRAM

FIML Natural Resources LLC

24-9s-33w Thomas,KS

410 17th St. STE 900
Denver CO. 80202

Herbel #11B-29-933

Job Ticket: 49903

DST#: 1

ATTN: Gary Doke / Jim Musg

Test Start: 2012.11.02 @ 07:02:00

Tool Information

Drill Pipe:	Length:	ft	Diameter:	3.80 inches	Volume:	- bbl	Tool Weight:	1500.00 lb
Heavy Wt. Pipe:	Length:	0.00 ft	Diameter:	0.00 inches	Volume:	0.00 bbl	Weight set on Packer:	30000.00 lb
Drill Collar:	Length:	366.00 ft	Diameter:	2.25 inches	Volume:	1.80 bbl	Weight to Pull Loose:	lb
					Total Volume:	- bbl	Tool Chased	ft
Drill Pipe Above KB:	-3790.00 ft						String Weight: Initial	50000.00 lb
Depth to Top Packer:	4176.00 ft						Final	lb
Depth to Bottom Packer:	ft							
Interval between Packers:	74.00 ft							
Tool Length:	94.00 ft							
Number of Packers:	2		Diameter:	6.75 inches				
Tool Comments:								

Tool Description

Tool Description	Length (ft)	Serial No.	Position	Depth (ft)	Accum. Lengths
Change Over Sub	1.00			4157.00	
Shut In Tool	5.00			4162.00	
Hydraulic tool	5.00			4167.00	
Packer	5.00			4172.00	20.00 Bottom Of Top Packer
Packer	4.00			4176.00	
Stubb	1.00			4177.00	
Perforations	1.00			4178.00	
Recorder	0.00	8360	Inside	4178.00	
Recorder	0.00	8353	Outside	4178.00	
Perforations	5.00			4183.00	
Change Over Sub	1.00			4184.00	
Drill Pipe	62.00			4246.00	
Change Over Sub	1.00			4247.00	
Bullnose	3.00			4250.00	74.00 Bottom Packers & Anchor

Total Tool Length: 94.00



**TRILOBITE
TESTING, INC.**

DRILL STEM TEST REPORT

FLUID SUMMARY

FIML Natural Resources LLC

24-9s-33w Thomas,KS

410 17th St. STE 900
Denver CO. 80202

Herbel #11B-29-933

Job Ticket: 49903

DST#: 1

ATTN: Gary Doke / Jim Musg

Test Start: 2012.11.02 @ 07:02:00

Mud and Cushion Information

Mud Type: Gel Chem

Cushion Type:

Oil API:

deg API

Mud Weight: 9.00 lb/gal

Cushion Length:

ft

Water Salinity:

ppm

Viscosity: 51.00 sec/qt

Cushion Volume:

bbbl

Water Loss: 8.70 in³

Gas Cushion Type:

Resistivity: ohm.m

Gas Cushion Pressure:

psig

Salinity: 2000.00 ppm

Filter Cake: 1.00 inches

Recovery Information

Recovery Table

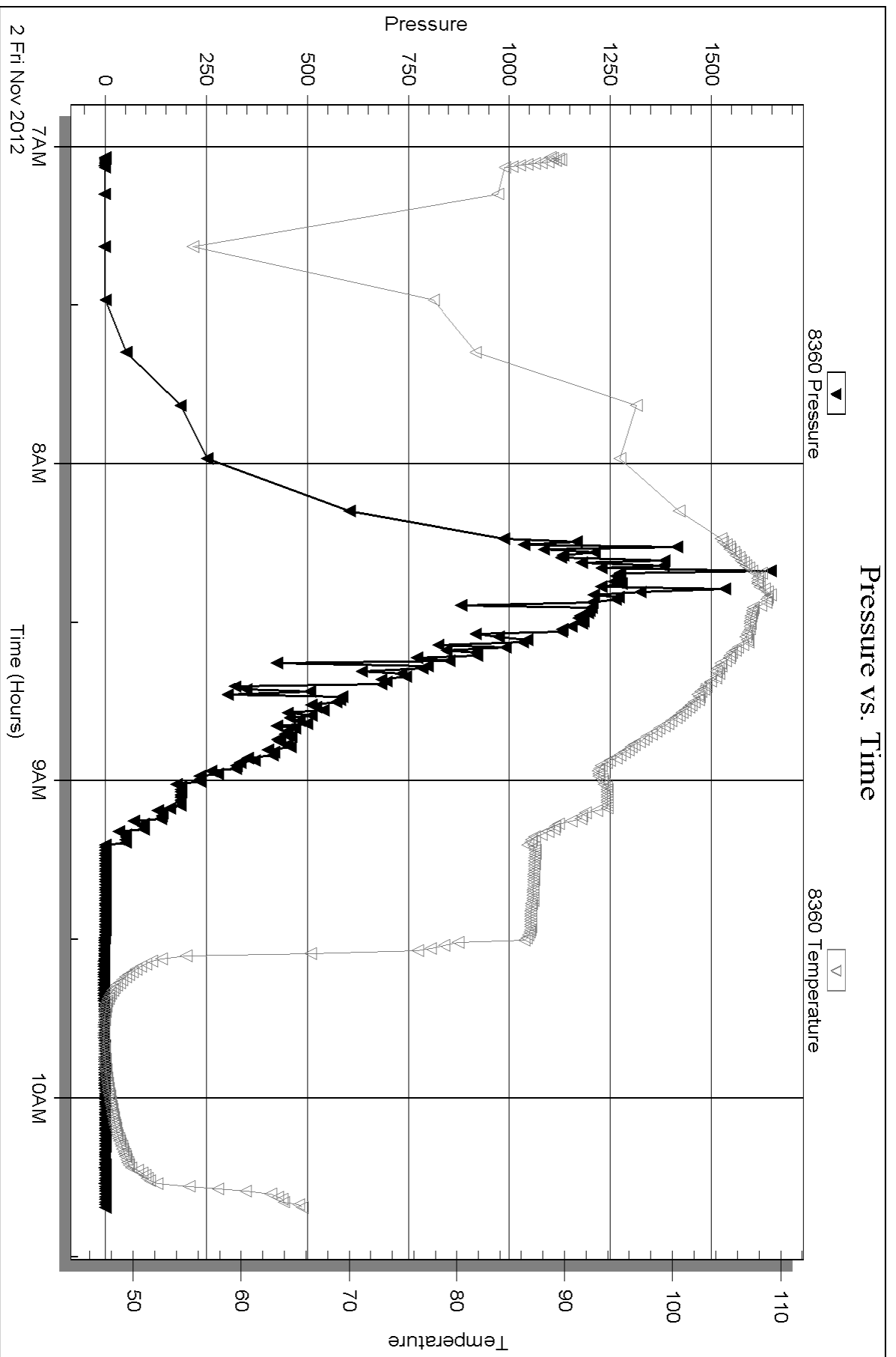
Length ft	Description	Volume bbbl

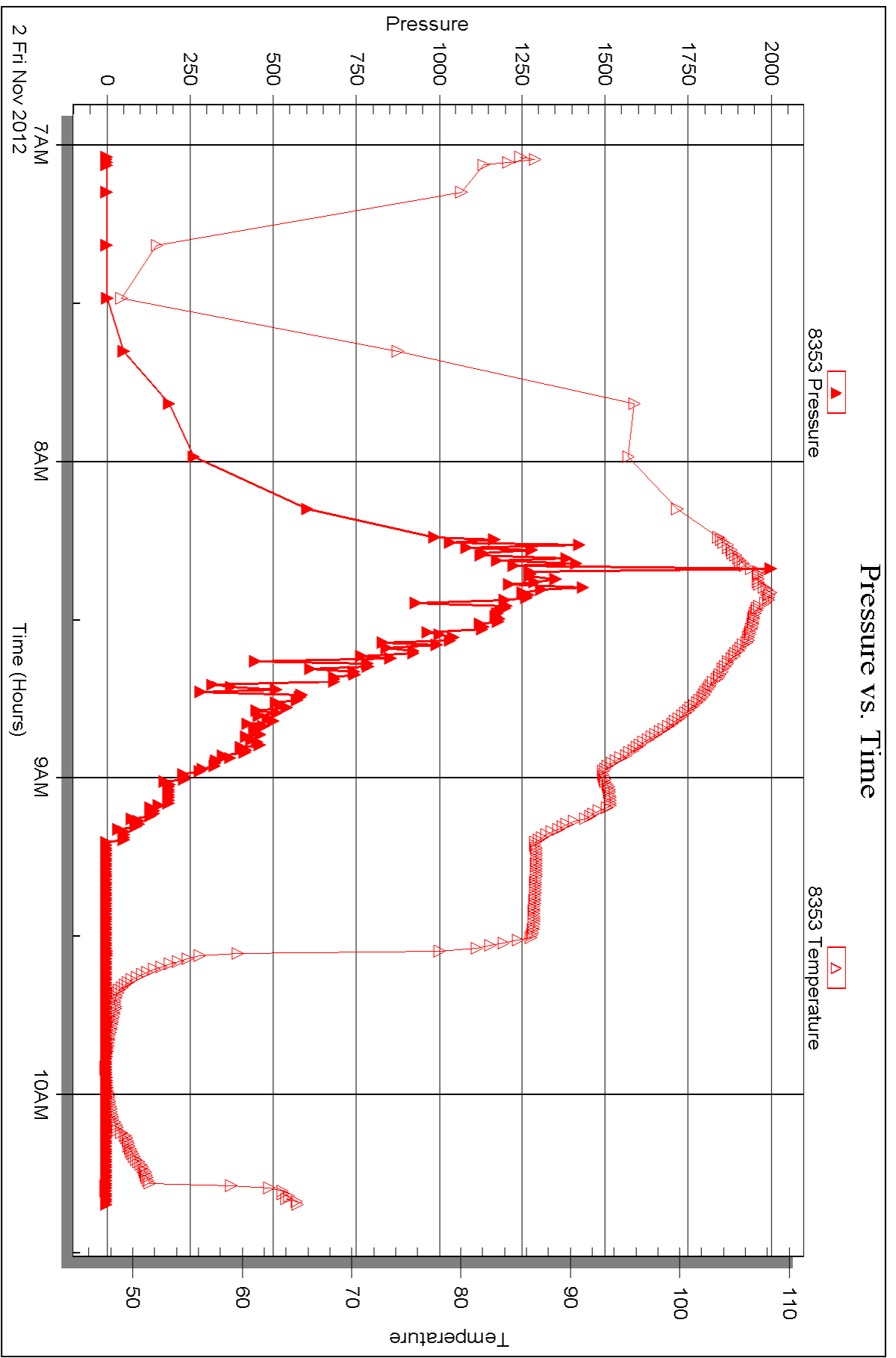
Total Length: ft Total Volume: bbl

Num Fluid Samples: 0 Num Gas Bombs: 0 Serial #:

Laboratory Name: Laboratory Location:

Recovery Comments:







DRILL STEM TEST REPORT

Prepared For: **FIML Natural Resources LLC**

410 17th St. STE 900
Denver CO. 80202

ATTN: Gary Doke / Jim Musg

Herbel #11B-29-933

24-9s-33w Thomas,KS

Start Date: 2012.11.02 @ 16:20:00

End Date: 2012.11.03 @ 00:32:54

Job Ticket #: 49904 DST #: 2

Trilobite Testing, Inc

PO Box 362 Hays, KS 67601

ph: 785-625-4778 fax: 785-625-5620

Printed: 2012.11.15 @ 14:13:17



TRILOBITE TESTING, INC.

DRILL STEM TEST REPORT

FIML Natural Resources LLC

24-9s-33w Thomas,KS

410 17th St. STE 900
Denver CO. 80202

Herbel #11B-29-933

ATTN: Gary Doke / Jim Musg

Job Ticket: 49904

DST#: 2

Test Start: 2012.11.02 @ 16:20:00

GENERAL INFORMATION:

Formation: **LKC " H "**
 Deviated: No Whipstock: ft (KB)
 Test Type: Conventional Bottom Hole (Reset)
 Time Tool Opened: 18:45:55
 Tester: Will MacLean
 Time Test Ended: 00:32:54
 Unit No: 40
 Interval: **4170.00 ft (KB) To 4250.00 ft (KB) (TVD)**
 Reference Elevations: 3106.00 ft (KB)
 Total Depth: 4250.00 ft (KB) (TVD)
 3096.00 ft (CF)
 Hole Diameter: 7.88 inches
 Hole Condition: Good
 KB to GR/CF: 10.00 ft

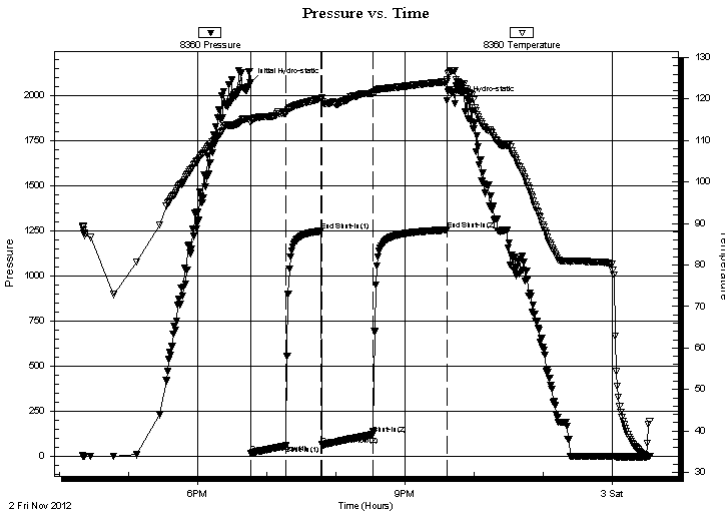
Serial #: 8360

Inside

Press @ Run Depth: 121.35 psig @ 4178.00 ft (KB) Capacity: 8000.00 psig
 Start Date: 2012.11.02 End Date: 2012.11.03 Last Calib.: 2012.11.02
 Start Time: 16:20:00 End Time: 00:32:54 Time On Btm: 2012.11.02 @ 18:45:40
 Time Off Btm: 2012.11.02 @ 21:36:39

TEST COMMENT: IF- Weak Surface Blow Built to 2 3/4"
 IS- No Blow
 FF- Weak Surface Blow 1/2"
 FS- No Blow

PRESSURE SUMMARY



Time (Min.)	Pressure (psig)	Temp (deg F)	Annotation
0	2071.86	115.29	Initial Hydro-static
1	16.43	114.29	Open To Flow (1)
31	58.00	116.59	Shut-In(1)
61	1249.06	120.10	End Shut-In(1)
63	61.39	120.03	Open To Flow (2)
107	121.35	121.48	Shut-In(2)
171	1255.24	124.18	End Shut-In(2)
171	1971.78	124.67	Final Hydro-static

Recovery

Length (ft)	Description	Volume (bbl)
92.00	MCW 10%m 90%w	0.45
92.00	MCW 27%m 73%w	0.45
10.00	WCM 37%w 63%m with Skim of Oil on	0.05

* Recovery from multiple tests

Gas Rates

Choke (inches)	Pressure (psig)	Gas Rate (Mcf/d)



**TRILOBITE
TESTING, INC.**

DRILL STEM TEST REPORT

TOOL DIAGRAM

FIML Natural Resources LLC

24-9s-33w Thomas,KS

410 17th St. STE 900
Denver CO. 80202

Herbel #11B-29-933

Job Ticket: 49904

DST#: 2

ATTN: Gary Doke / Jim Musg

Test Start: 2012.11.02 @ 16:20:00

Tool Information

Drill Pipe:	Length: 3800.00 ft	Diameter: 3.80 inches	Volume: 53.30 bbl	Tool Weight: 1500.00 lb
Heavy Wt. Pipe:	Length: 0.00 ft	Diameter: 0.00 inches	Volume: 0.00 bbl	Weight set on Packer: 24000.00 lb
Drill Collar:	Length: 366.00 ft	Diameter: 2.25 inches	Volume: 1.80 bbl	Weight to Pull Loose: 18000.00 lb
			<u>Total Volume: 55.10 bbl</u>	Tool Chased ft
Drill Pipe Above KB:	10.00 ft			String Weight: Initial 68000.00 lb
Depth to Top Packer:	4176.00 ft			Final 68000.00 lb
Depth to Bottom Packer:	ft			
Interval between Packers:	74.00 ft			
Tool Length:	94.00 ft			
Number of Packers:	2	Diameter: 6.75 inches		

Tool Comments:

Tool Description	Length (ft)	Serial No.	Position	Depth (ft)	Accum. Lengths
------------------	-------------	------------	----------	------------	----------------

Change Over Sub	1.00			4157.00	
Shut In Tool	5.00			4162.00	
Hydraulic tool	5.00			4167.00	
Packer	5.00			4172.00	20.00 Bottom Of Top Packer
Packer	4.00			4176.00	
Stubb	1.00			4177.00	
Perforations	1.00			4178.00	
Recorder	0.00	8360	Inside	4178.00	
Recorder	0.00	8353	Outside	4178.00	
Perforations	5.00			4183.00	
Change Over Sub	1.00			4184.00	
Drill Pipe	62.00			4246.00	
Change Over Sub	1.00			4247.00	
Bullnose	3.00			4250.00	74.00 Bottom Packers & Anchor

Total Tool Length: 94.00



**TRILOBITE
TESTING, INC.**

DRILL STEM TEST REPORT

FLUID SUMMARY

FIML Natural Resources LLC

24-9s-33w Thomas,KS

410 17th St. STE 900
Denver CO. 80202

Herbel #11B-29-933

Job Ticket: 49904

DST#: 2

ATTN: Gary Doke / Jim Musg

Test Start: 2012.11.02 @ 16:20:00

Mud and Cushion Information

Mud Type: Gel Chem

Cushion Type:

Oil API:

deg API

Mud Weight: 9.00 lb/gal

Cushion Length:

ft

Water Salinity:

43000 ppm

Viscosity: 51.00 sec/qt

Cushion Volume:

bbbl

Water Loss: 8.71 in³

Gas Cushion Type:

Resistivity: ohm.m

Gas Cushion Pressure:

psig

Salinity: 2000.00 ppm

Filter Cake: 1.00 inches

Recovery Information

Recovery Table

Length ft	Description	Volume bbl
92.00	MCW 10%m 90%w	0.452
92.00	MCW 27%m 73%w	0.452
10.00	WCM 37%w 63%m with Skim of Oil on Top	0.049

Total Length: 194.00 ft Total Volume: 0.953 bbl

Num Fluid Samples: 0

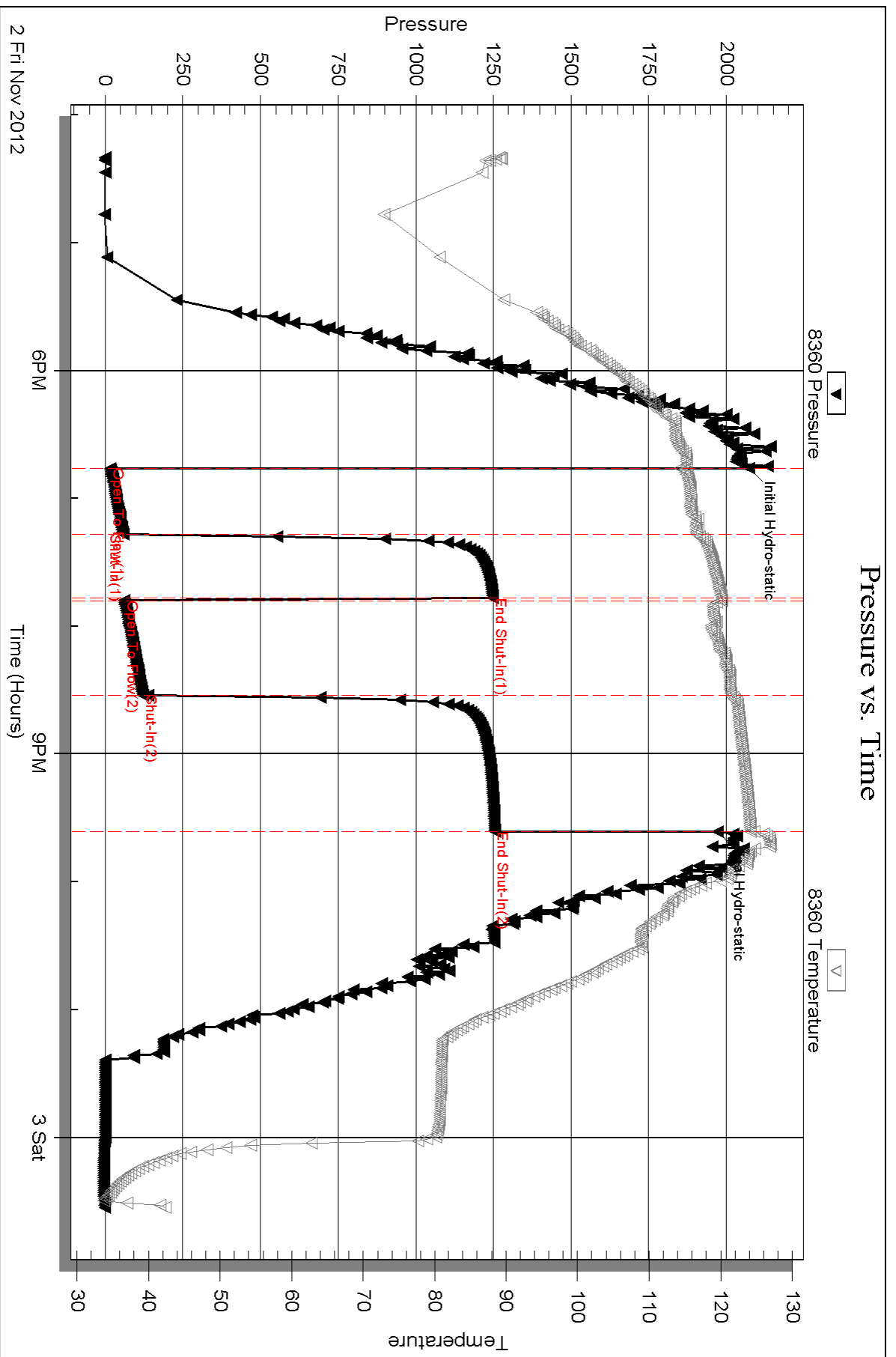
Num Gas Bombs: 0

Serial #:

Laboratory Name:

Laboratory Location:

Recovery Comments: RW is .284 @ 41f = 43000





DRILL STEM TEST REPORT

Prepared For: **FIML Natural Resources LLC**

410 17th St. STE 900
Denver CO. 80202

ATTN: Gary Doke / Jim Musg

Herbel #11B-29-933

24-9s-33w Thomas,KS

Start Date: 2012.11.03 @ 09:50:00

End Date: 2012.11.03 @ 16:07:39

Job Ticket #: 49905 DST #: 3

Trilobite Testing, Inc
PO Box 362 Hays, KS 67601
ph: 785-625-4778 fax: 785-625-5620

Printed: 2012.11.15 @ 14:11:46

FIML Natural Resources LLC

24-9s-33w Thomas,KS

Herbel #11B-29-933

DST # 3

LKC " I & J "

2012.11.03



TRILOBITE TESTING, INC.

DRILL STEM TEST REPORT

FIML Natural Resources LLC

24-9s-33w Thomas,KS

410 17th St. STE 900
Denver CO. 80202

Herbel #11B-29-933

ATTN: Gary Doke / Jim Musg

Job Ticket: 49905

DST#: 3

Test Start: 2012.11.03 @ 09:50:00

GENERAL INFORMATION:

Formation: **LKC "I & J"**

Deviated: No Whipstock: ft (KB)

Time Tool Opened: 11:45:55

Time Test Ended: 16:07:39

Test Type: Conventional Bottom Hole (Reset)

Tester: Will MacLean

Unit No: 40

Interval: 4244.00 ft (KB) To 4292.00 ft (KB) (TVD)

Reference Elevations: 3106.00 ft (KB)

Total Depth: 4292.00 ft (KB) (TVD)

3096.00 ft (CF)

Hole Diameter: 7.88 inches Hole Condition: Good

KB to GR/CF: 10.00 ft

Serial #: 8360

Inside

Press @ Run Depth: 27.97 psig @ 4246.00 ft (KB)

Capacity: 8000.00 psig

Start Date: 2012.11.03

End Date:

2012.11.03

Last Calib.:

2012.11.03

Start Time: 09:50:00

End Time:

16:07:39

Time On Btm:

2012.11.03 @ 11:45:40

Time Off Btm:

2012.11.03 @ 14:08:24

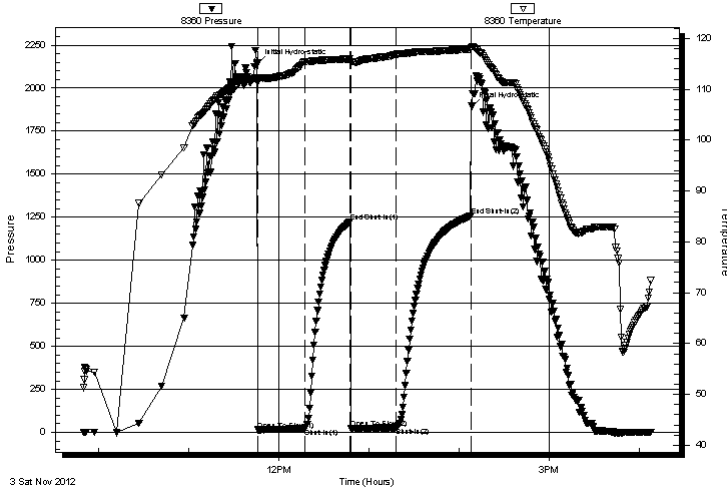
TEST COMMENT: IF- Weak Surface Blow Built to 3/4"

IS- No Blow

FF- Weak Surface Blow Died in 2 1/2 min

FS- No Blow

Pressure vs. Time



PRESSURE SUMMARY

Time (Min.)	Pressure (psig)	Temp (deg F)	Annotation
0	2139.61	112.16	Initial Hydro-static
1	14.97	111.38	Open To Flow (1)
32	22.00	115.48	Shut-In(1)
62	1224.17	115.98	End Shut-In(1)
63	23.48	115.44	Open To Flow (2)
93	27.97	116.88	Shut-In(2)
143	1257.78	117.89	End Shut-In(2)
143	1894.66	118.22	Final Hydro-static

Recovery

Length (ft)	Description	Volume (bbl)
10.00	100%m	0.05

* Recovery from multiple tests

Gas Rates

Choke (inches)	Pressure (psig)	Gas Rate (Mcf/d)



**TRILOBITE
TESTING, INC.**

DRILL STEM TEST REPORT

TOOL DIAGRAM

FIML Natural Resources LLC

24-9s-33w Thomas,KS

410 17th St. STE 900
Denver CO. 80202

Herbel #11B-29-933

Job Ticket: 49905

DST#: 3

ATTN: Gary Doke / Jim Musg

Test Start: 2012.11.03 @ 09:50:00

Tool Information

Drill Pipe:	Length: 3862.00 ft	Diameter: 3.80 inches	Volume: 54.17 bbl	Tool Weight: 1500.00 lb
Heavy Wt. Pipe:	Length: 0.00 ft	Diameter: 0.00 inches	Volume: 0.00 bbl	Weight set on Packer: 24000.00 lb
Drill Collar:	Length: 366.00 ft	Diameter: 2.25 inches	Volume: 1.80 bbl	Weight to Pull Loose: 6000.00 lb
			<u>Total Volume: 55.97 bbl</u>	Tool Chased ft
Drill Pipe Above KB:	4.00 ft			String Weight: Initial 68000.00 lb
Depth to Top Packer:	4244.00 ft			Final 68000.00 lb
Depth to Bottom Packer:	ft			
Interval between Packers:	48.00 ft			
Tool Length:	68.00 ft			
Number of Packers:	2	Diameter: 6.75 inches		

Tool Comments:

Tool Description	Length (ft)	Serial No.	Position	Depth (ft)	Accum. Lengths
------------------	-------------	------------	----------	------------	----------------

Change Over Sub	1.00			4225.00	
Shut In Tool	5.00			4230.00	
Hydraulic tool	5.00			4235.00	
Packer	5.00			4240.00	20.00 Bottom Of Top Packer
Packer	4.00			4244.00	
Stubb	1.00			4245.00	
Perforations	1.00			4246.00	
Recorder	0.00	8360	Inside	4246.00	
Recorder	0.00	8353	Outside	4246.00	
Perforations	10.00			4256.00	
Change Over Sub	1.00			4257.00	
Drill Pipe	31.00			4288.00	
Change Over Sub	1.00			4289.00	
Bullnose	3.00			4292.00	48.00 Bottom Packers & Anchor

Total Tool Length: 68.00



**TRILOBITE
TESTING, INC.**

DRILL STEM TEST REPORT

FLUID SUMMARY

FIML Natural Resources LLC

24-9s-33w Thomas,KS

410 17th St. STE 900
Denver CO. 80202

Herbel #11B-29-933

Job Ticket: 49905

DST#: 3

ATTN: Gary Doke / Jim Musg

Test Start: 2012.11.03 @ 09:50:00

Mud and Cushion Information

Mud Type: Gel Chem

Cushion Type:

Oil API:

deg API

Mud Weight: 9.00 lb/gal

Cushion Length:

ft

Water Salinity:

ppm

Viscosity: 52.00 sec/qt

Cushion Volume:

bbbl

Water Loss: 9.55 in³

Gas Cushion Type:

Resistivity: ohm.m

Gas Cushion Pressure:

psig

Salinity: 2500.00 ppm

Filter Cake: 1.00 inches

Recovery Information

Recovery Table

Length ft	Description	Volume bbl
10.00	100%m	0.049

Total Length: 10.00 ft Total Volume: 0.049 bbl

Num Fluid Samples: 0

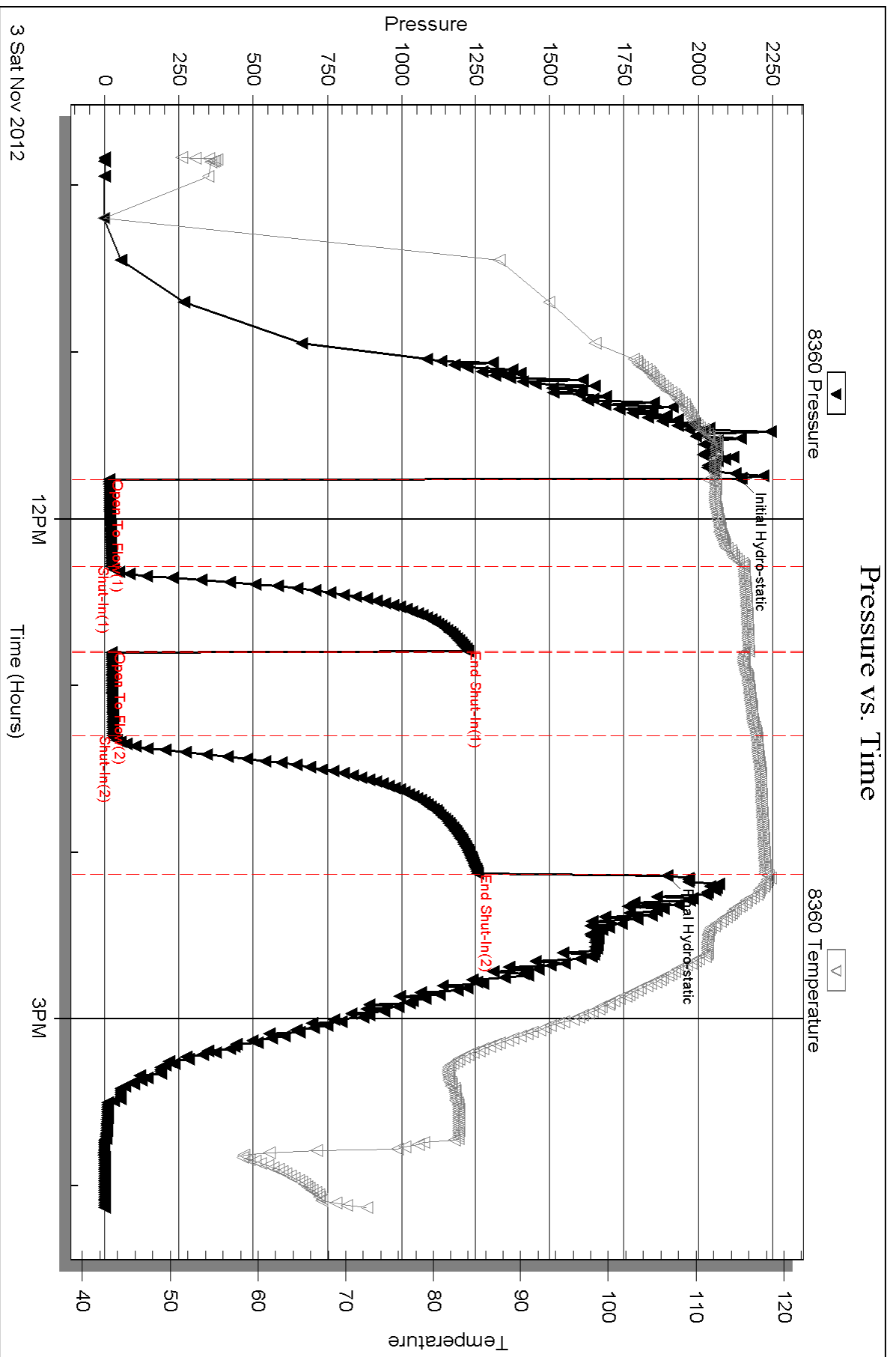
Num Gas Bombs: 0

Serial #:

Laboratory Name:

Laboratory Location:

Recovery Comments:

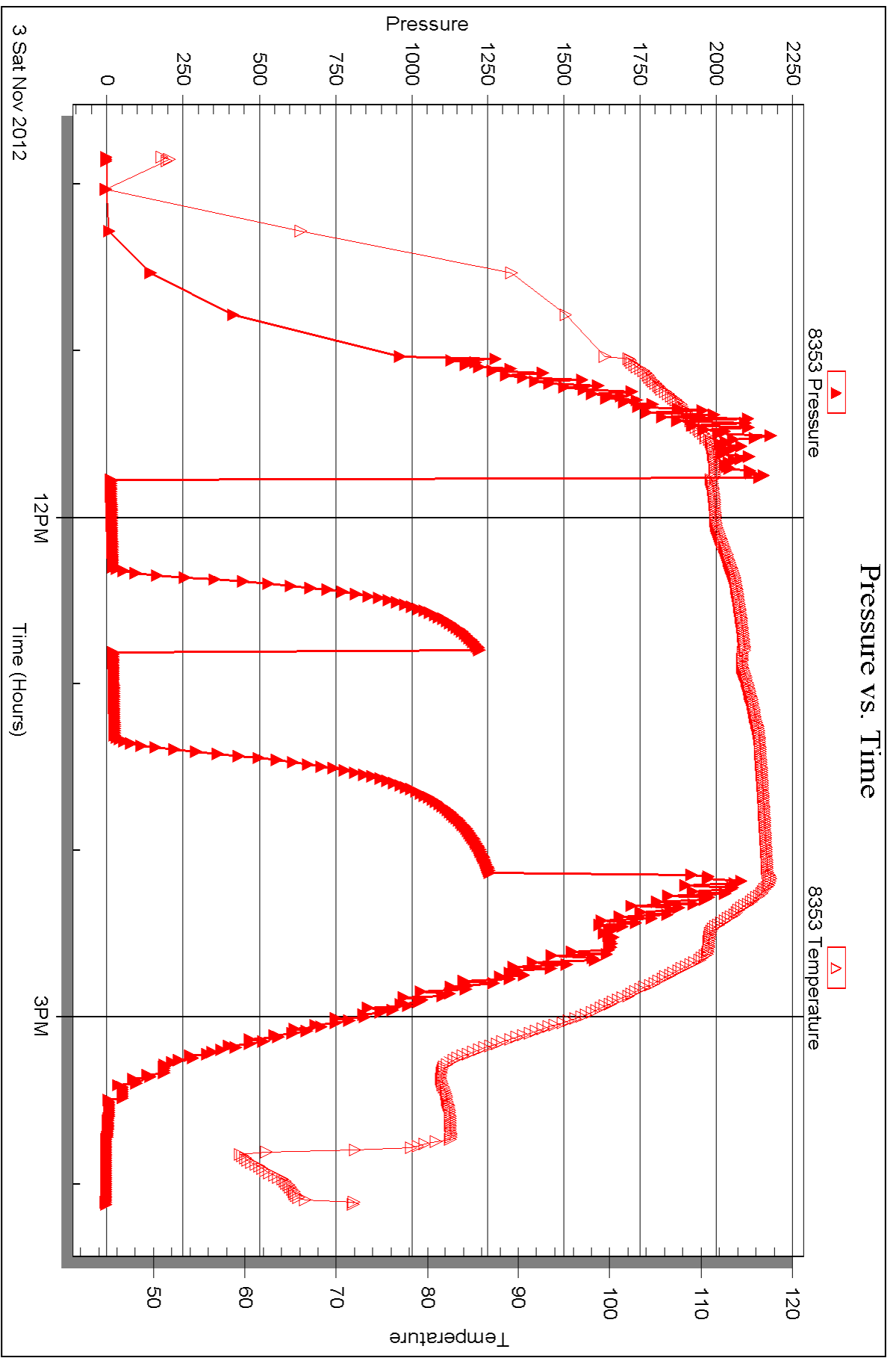


Serial #: 8353

Outside FIML Natural Resources LLC

Herbel #11B-29-933

DST Test Number: 3





DRILL STEM TEST REPORT

Prepared For: **FIML Natural Resources LLC**

410 17th St. STE 900
Denver CO. 80202

ATTN: Gary Doke / Jim Musg

Herbel #11B-29-933

24-9s-33w Thomas,KS

Start Date: 2012.11.04 @ 15:01:32

End Date: 2012.11.05 @ 00:28:32

Job Ticket #: 49833 DST #: 4

Trilobite Testing, Inc
PO Box 362 Hays, KS 67601
ph: 785-625-4778 fax: 785-625-5620

Printed: 2012.11.15 @ 14:10:33



**TRILOBITE
TESTING, INC.**

DRILL STEM TEST REPORT

FIML Natural Resources LLC

24-9s-33w Thomas,KS

410 17th St. STE 900
Denver CO. 80202

Herbel #11B-29-933

ATTN: Gary Doke / Jim Musg

Job Ticket: 49833

DST#: 4

Test Start: 2012.11.04 @ 15:01:32

GENERAL INFORMATION:

Formation: **Myric Station**

Deviated: No Whipstock: ft (KB)

Time Tool Opened: 17:41:02

Time Test Ended: 00:28:32

Test Type: Conventional Bottom Hole (Reset)

Tester: Tate Lang

Unit No: 40

Interval: 4454.00 ft (KB) To 4500.00 ft (KB) (TVD)

Reference Elevations: 3106.00 ft (KB)

Total Depth: 4500.00 ft (KB) (TVD)

3096.00 ft (CF)

Hole Diameter: 7.88 inches Hole Condition: Good

KB to GR/CF: 10.00 ft

Serial #: 8360

Inside

Press @ Run Depth: 218.00 psig @ 4455.00 ft (KB)

Capacity: 8000.00 psig

Start Date: 2012.11.04

End Date:

2012.11.05

Last Calib.: 2012.11.05

Start Time: 15:01:37

End Time:

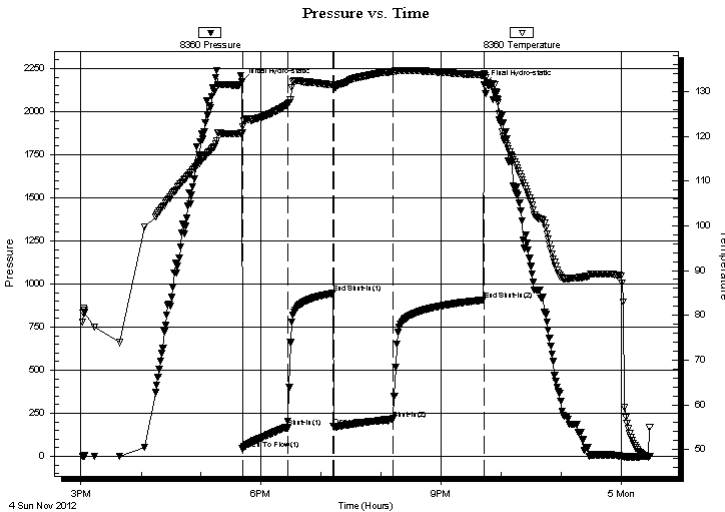
00:28:32

Time On Btm: 2012.11.04 @ 17:40:32

Time Off Btm: 2012.11.04 @ 21:42:47

TEST COMMENT: IF-B.O.B. in 15 mins.
ISI-Weak Surface return blow built to 1"
FF-B.O.B. in 20 mins
FSI-Fair return blow built to 4"

PRESSURE SUMMARY



Time (Min.)	Pressure (psig)	Temp (deg F)	Annotation
0	2171.59	120.65	Initial Hydro-static
1	43.53	120.74	Open To Flow (1)
46	166.53	127.10	Shut-In(1)
92	946.24	131.50	End Shut-In(1)
92	173.23	131.05	Open To Flow (2)
151	218.00	134.45	Shut-In(2)
242	907.05	133.69	End Shut-In(2)
243	2156.33	133.89	Final Hydro-static

Recovery

Length (ft)	Description	Volume (bbl)
279.00	5%G 5%O 35%M 55%W	1.37
166.00	2%G 38%O 60%M	1.54
51.00	2%G 98%O	0.72
0.00	527' Weak G.I.P.	0.00

Gas Rates

	Choke (inches)	Pressure (psig)	Gas Rate (Mcf/d)

* Recovery from multiple tests



**TRILOBITE
TESTING, INC.**

DRILL STEM TEST REPORT

TOOL DIAGRAM

FIML Natural Resources LLC

24-9s-33w Thomas,KS

410 17th St. STE 900
Denver CO. 80202

Herbel #11B-29-933

Job Ticket: 49833

DST#: 4

ATTN: Gary Doke / Jim Musg

Test Start: 2012.11.04 @ 15:01:32

Tool Information

Drill Pipe:	Length: 4079.00 ft	Diameter: 3.80 inches	Volume: 57.22 bbl	Tool Weight: 1500.00 lb
Heavy Wt. Pipe:	Length: 0.00 ft	Diameter: 0.00 inches	Volume: 0.00 bbl	Weight set on Packer: 20000.00 lb
Drill Collar:	Length: 366.00 ft	Diameter: 2.25 inches	Volume: 1.80 bbl	Weight to Pull Loose: 88000.00 lb
			<u>Total Volume: 59.02 bbl</u>	Tool Chased 3.00 ft
Drill Pipe Above KB:	11.00 ft			String Weight: Initial 70000.00 lb
Depth to Top Packer:	4454.00 ft			Final 72000.00 lb
Depth to Bottom Packer:	ft			
Interval between Packers:	46.00 ft			
Tool Length:	66.00 ft			
Number of Packers:	2	Diameter: 6.75 inches		

Tool Comments:

Tool Description

Tool Description	Length (ft)	Serial No.	Position	Depth (ft)	Accum. Lengths
Change Over Sub	1.00			4435.00	
Shut In Tool	5.00			4440.00	
Hydraulic tool	5.00			4445.00	
Packer	5.00			4450.00	20.00 Bottom Of Top Packer
Packer	4.00			4454.00	
Stubb	1.00			4455.00	
Recorder	0.00	8360	Inside	4455.00	
Recorder	0.00	8353	Outside	4455.00	
Perforations	8.00			4463.00	
Change Over Sub	1.00			4464.00	
Drill Pipe	32.00			4496.00	
Change Over Sub	1.00			4497.00	
Bullnose	3.00			4500.00	46.00 Bottom Packers & Anchor

Total Tool Length: 66.00



**TRILOBITE
TESTING, INC.**

DRILL STEM TEST REPORT

FLUID SUMMARY

FIML Natural Resources LLC

24-9s-33w Thomas,KS

410 17th St. STE 900
Denver CO. 80202

Herbel #11B-29-933

Job Ticket: 49833

DST#: 4

ATTN: Gary Doke / Jim Musg

Test Start: 2012.11.04 @ 15:01:32

Mud and Cushion Information

Mud Type: Gel Chem

Cushion Type:

Oil API:

35 deg API

Mud Weight: 9.00 lb/gal

Cushion Length:

ft

Water Salinity:

ppm

Viscosity: 51.00 sec/qt

Cushion Volume:

bbbl

Water Loss: 7.16 in³

Gas Cushion Type:

Resistivity: ohm.m

Gas Cushion Pressure:

psig

Salinity: 3000.00 ppm

Filter Cake: 1.00 inches

Recovery Information

Recovery Table

Length ft	Description	Volume bbbl
279.00	5%G 5%O 35%M 55%W	1.372
166.00	2%G 38%O 60%M	1.536
51.00	2%G 98%O	0.715
0.00	527' Weak G.I.P.	0.000

Total Length: 496.00 ft

Total Volume: 3.623 bbl

Num Fluid Samples: 0

Num Gas Bombs: 0

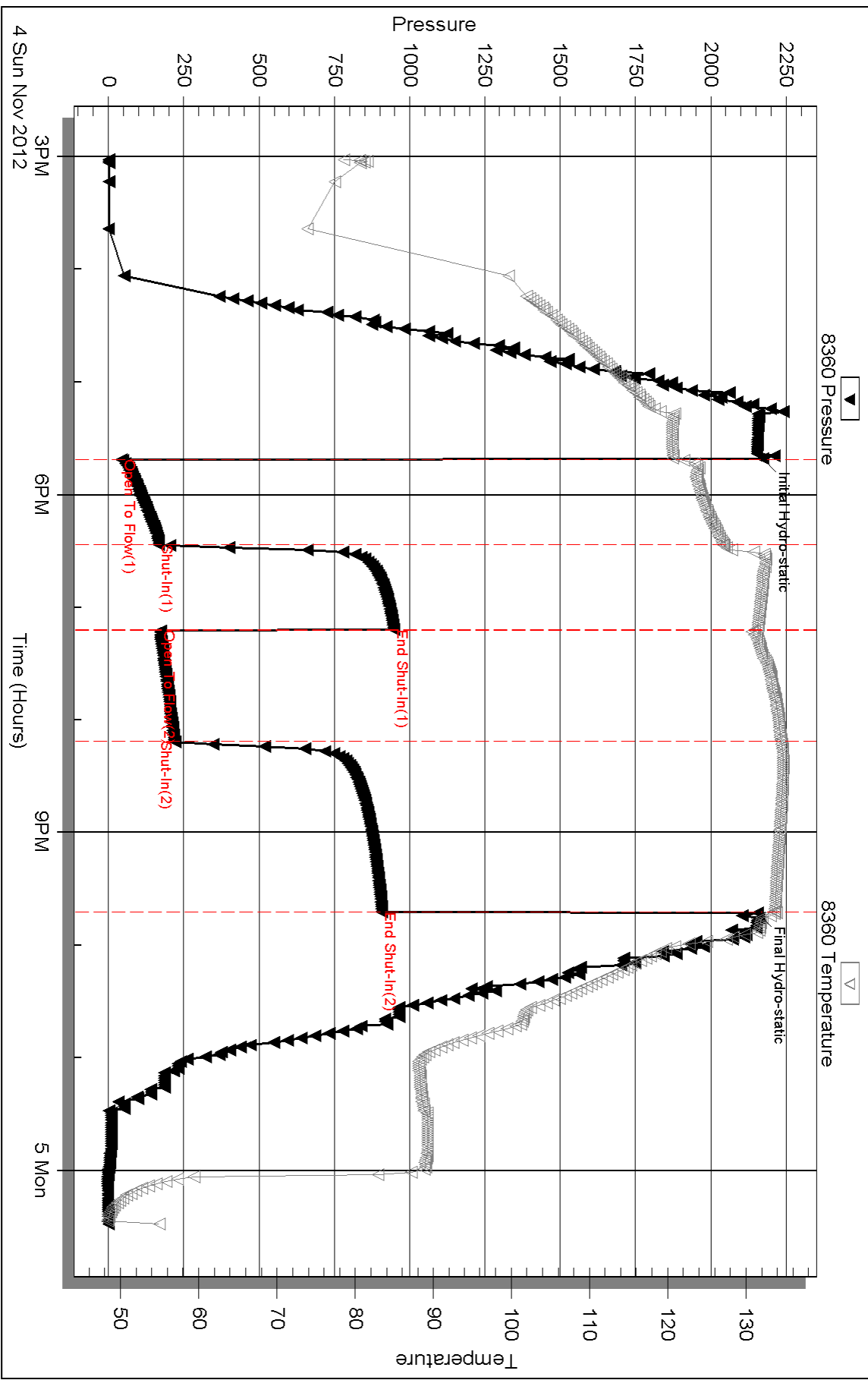
Serial #:

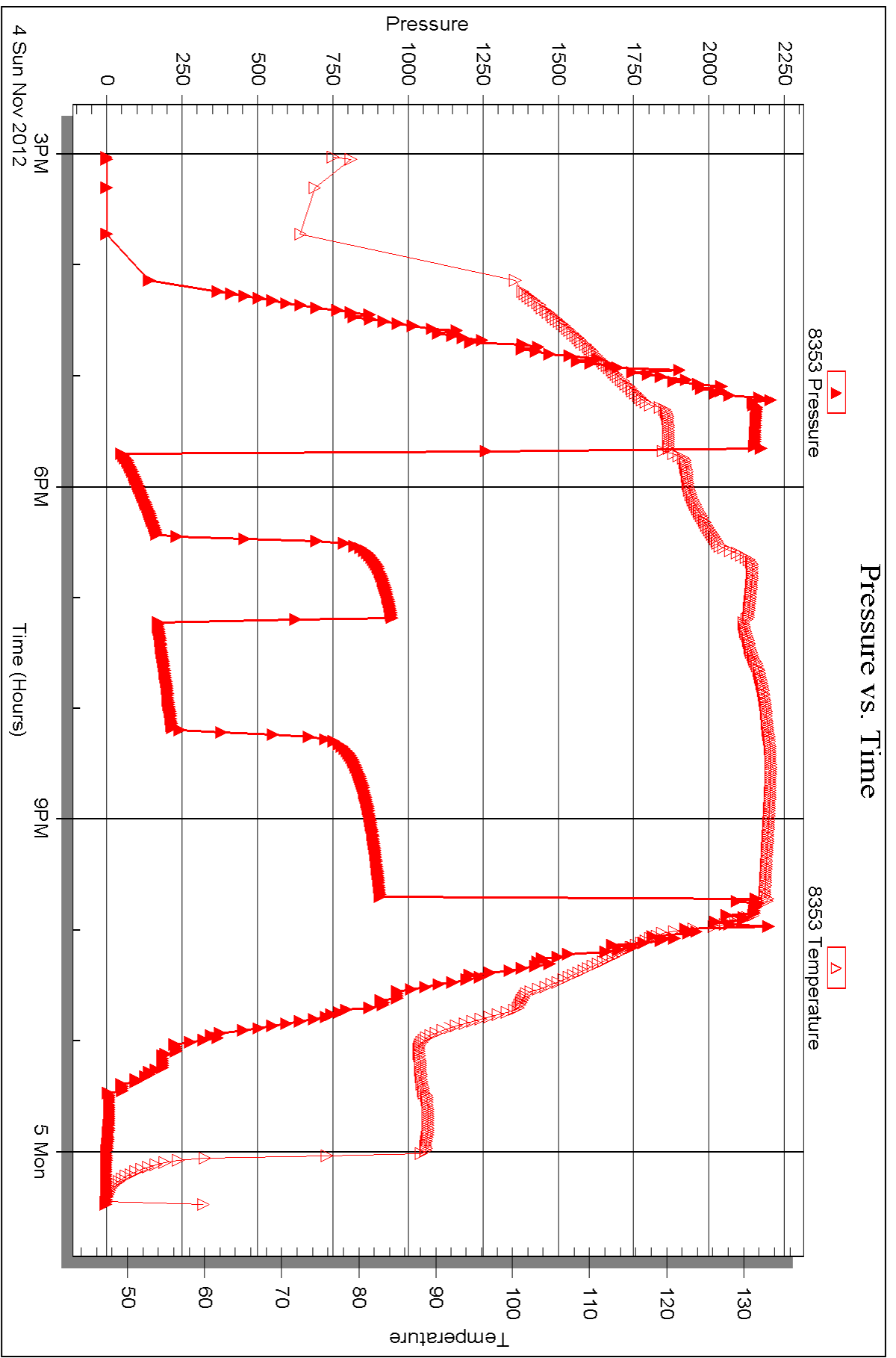
Laboratory Name:

Laboratory Location:

Recovery Comments: 36 @ 50F=35

Pressure vs. Time







DRILL STEM TEST REPORT

Prepared For: **FIML Natural Resources LLC**

410 17th St. STE 900
Denver CO. 80202

ATTN: Gary Doke / Jim Musg

Herbel #11B-29-933

24-9s-33w Thomas,KS

Start Date: 2012.11.05 @ 10:49:32

End Date: 2012.11.05 @ 17:35:17

Job Ticket #: 49834 DST #: 5

Trilobite Testing, Inc
PO Box 362 Hays, KS 67601
ph: 785-625-4778 fax: 785-625-5620

Printed: 2012.11.15 @ 14:08:29



TRILOBITE TESTING, INC.

DRILL STEM TEST REPORT

FIML Natural Resources LLC

24-9s-33w Thomas,KS

410 17th St. STE 900
Denver CO. 80202

Herbel #11B-29-933

ATTN: Gary Duke / Jim Musg

Job Ticket: 49834

DST#: 5

Test Start: 2012.11.05 @ 10:49:32

GENERAL INFORMATION:

Formation: **FT. Scott**

Deviated: No Whipstock: ft (KB)

Time Tool Opened: 13:29:47

Time Test Ended: 17:35:17

Test Type: Conventional Bottom Hole (Reset)

Tester: Tate Lang

Unit No: 40

Interval: 4500.00 ft (KB) To 4555.00 ft (KB) (TVD)

Reference Elevations: 3106.00 ft (KB)

Total Depth: 4555.00 ft (KB) (TVD)

3096.00 ft (CF)

Hole Diameter: 7.88 inches Hole Condition: Good

KB to GR/CF: 10.00 ft

Serial #: 8360

Inside

Press @ Run Depth: 92.56 psig @ 4501.00 ft (KB)

Capacity: 8000.00 psig

Start Date: 2012.11.05

End Date:

2012.11.05

Last Calib.:

2012.11.05

Start Time:

10:49:37

End Time:

17:35:16

Time On Btm:

2012.11.05 @ 13:29:32

Time Off Btm:

2012.11.05 @ 15:32:32

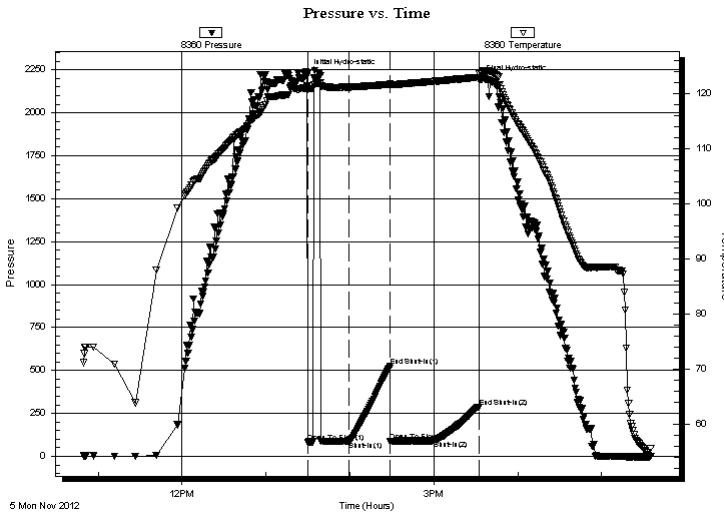
TEST COMMENT: IF-Surged w hen open then died. Flushed tool weak surface blow built to 1/4" Tool Slid 10'

ISI-Dead No Return

FF-Dead no blow .

FSI-Dead no return

PRESSURE SUMMARY



Time (Min.)	Pressure (psig)	Temp (deg F)	Annotation
0	2229.75	121.40	Initial Hydro-static
1	83.66	120.69	Open To Flow (1)
30	88.32	121.16	Shut-In(1)
60	525.85	121.67	End Shut-In(1)
60	88.86	121.47	Open To Flow (2)
91	92.56	122.21	Shut-In(2)
123	284.72	122.94	End Shut-In(2)
123	2191.92	123.59	Final Hydro-static

Recovery

Length (ft)	Description	Volume (bbl)
100.00	100%M Skim of oil on top of tool	0.49

Gas Rates

	Choke (inches)	Pressure (psig)	Gas Rate (Mcf/d)

* Recovery from multiple tests



**TRILOBITE
TESTING, INC.**

DRILL STEM TEST REPORT

TOOL DIAGRAM

FIML Natural Resources LLC

24-9s-33w Thomas,KS

410 17th St. STE 900
Denver CO. 80202

Herbel #11B-29-933

Job Ticket: 49834

DST#: 5

ATTN: Gary Doke / Jim Musg

Test Start: 2012.11.05 @ 10:49:32

Tool Information

Drill Pipe:	Length: 4143.00 ft	Diameter: 3.80 inches	Volume: 58.12 bbl	Tool Weight: 1500.00 lb
Heavy Wt. Pipe:	Length: 0.00 ft	Diameter: 0.00 inches	Volume: 0.00 bbl	Weight set on Packer: 20000.00 lb
Drill Collar:	Length: 366.00 ft	Diameter: 2.25 inches	Volume: 1.80 bbl	Weight to Pull Loose: 88000.00 lb
			<u>Total Volume: 59.92 bbl</u>	Tool Chased 10.00 ft
Drill Pipe Above KB:	29.00 ft			String Weight: Initial 70000.00 lb
Depth to Top Packer:	4500.00 ft			Final 70000.00 lb
Depth to Bottom Packer:	ft			
Interval between Packers:	55.00 ft			
Tool Length:	75.00 ft			
Number of Packers:	2	Diameter: 6.75 inches		

Tool Comments:

Tool Description

Tool Description	Length (ft)	Serial No.	Position	Depth (ft)	Accum. Lengths
Change Over Sub	1.00			4481.00	
Shut In Tool	5.00			4486.00	
Hydraulic tool	5.00			4491.00	
Packer	5.00			4496.00	20.00 Bottom Of Top Packer
Packer	4.00			4500.00	
Stubb	1.00			4501.00	
Recorder	0.00	8360	Inside	4501.00	
Recorder	0.00	8353	Outside	4501.00	
Perforations	17.00			4518.00	
Change Over Sub	1.00			4519.00	
Drill Pipe	32.00			4551.00	
Change Over Sub	1.00			4552.00	
Bullnose	3.00			4555.00	55.00 Bottom Packers & Anchor

Total Tool Length: 75.00



**TRILOBITE
TESTING, INC.**

DRILL STEM TEST REPORT

FLUID SUMMARY

FIML Natural Resources LLC

24-9s-33w Thomas,KS

410 17th St. STE 900
Denver CO. 80202

Herbel #11B-29-933

Job Ticket: 49834

DST#: 5

ATTN: Gary Doke / Jim Musg

Test Start: 2012.11.05 @ 10:49:32

Mud and Cushion Information

Mud Type: Gel Chem

Cushion Type:

Oil API:

deg API

Mud Weight: 9.00 lb/gal

Cushion Length:

ft

Water Salinity:

ppm

Viscosity: 48.00 sec/qt

Cushion Volume:

bbf

Water Loss: 6.38 in³

Gas Cushion Type:

Resistivity: ohm.m

Gas Cushion Pressure:

psig

Salinity: 2000.00 ppm

Filter Cake: 1.00 inches

Recovery Information

Recovery Table

Length ft	Description	Volume bbf
100.00	100%M Skim of oil on top of tool	0.492

Total Length: 100.00 ft Total Volume: 0.492 bbf

Num Fluid Samples: 0

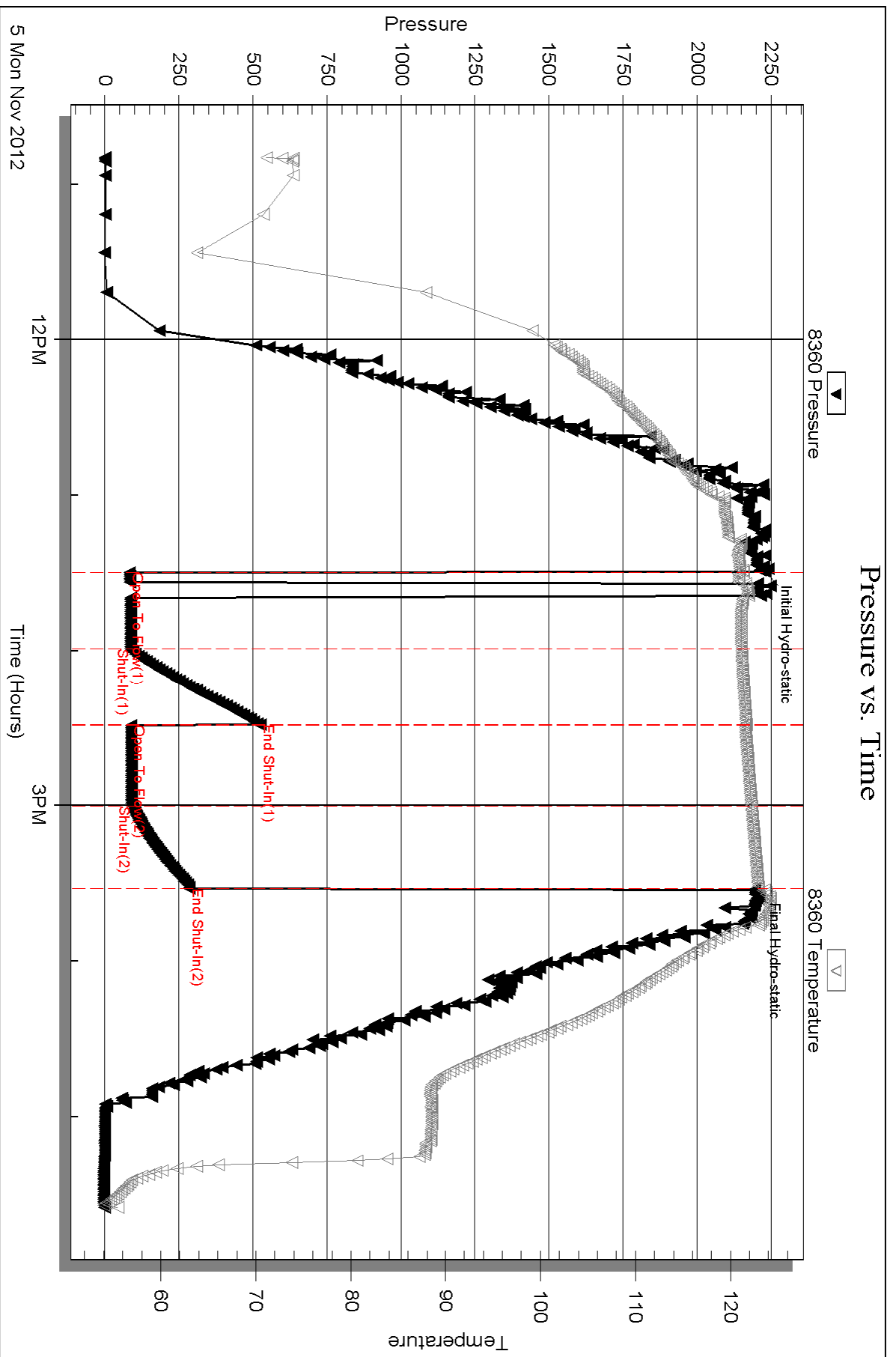
Num Gas Bombs: 0

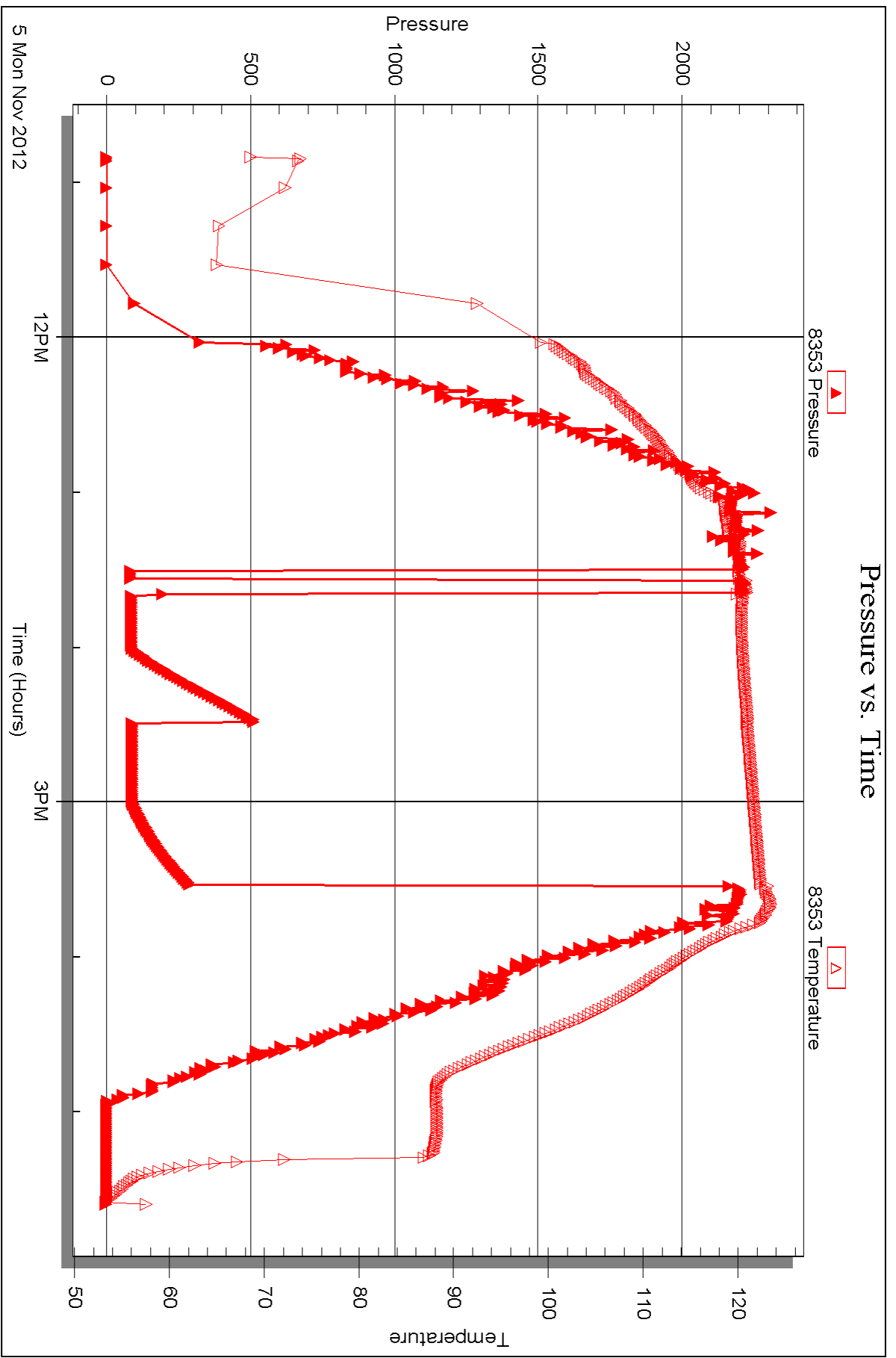
Serial #:

Laboratory Name:

Laboratory Location:

Recovery Comments:







DRILL STEM TEST REPORT

Prepared For: **FIML Natural Resources LLC**

410 17th St. STE 900
Denver CO. 80202

ATTN: Gary Doke / Jim Musg

Herbel #11B-29-933

24-9s-33w Thomas,KS

Start Date: 2012.11.06 @ 06:02:38

End Date: 2012.11.06 @ 13:14:38

Job Ticket #: 49835 DST #: 6

Trilobite Testing, Inc
PO Box 362 Hays, KS 67601
ph: 785-625-4778 fax: 785-625-5620

Printed: 2012.11.15 @ 14:07:07



**TRILOBITE
TESTING, INC.**

DRILL STEM TEST REPORT

FIML Natural Resources LLC

24-9s-33w Thomas,KS

410 17th St. STE 900
Denver CO. 80202

Herbel #11B-29-933

ATTN: Gary Doke / Jim Musg

Job Ticket: 49835

DST#: 6

Test Start: 2012.11.06 @ 06:02:38

GENERAL INFORMATION:

Formation: **Johnson**

Deviated: No Whipstock: ft (KB)

Time Tool Opened: 08:49:08

Time Test Ended: 13:14:38

Test Type: Conventional Bottom Hole (Reset)

Tester: Tate Lang

Unit No: 40

Interval: 4558.00 ft (KB) To 4615.00 ft (KB) (TVD)

Reference Elevations: 3106.00 ft (KB)

Total Depth: 4615.00 ft (KB) (TVD)

3096.00 ft (CF)

Hole Diameter: 7.88 inches Hole Condition: Good

KB to GR/CF: 10.00 ft

Serial #: 8360

Inside

Press @ RunDepth: 19.51 psig @ 4564.00 ft (KB)

Capacity: 8000.00 psig

Start Date: 2012.11.06

End Date:

2012.11.06

Last Calib.:

2012.11.06

Start Time: 06:02:43

End Time:

13:14:37

Time On Btm:

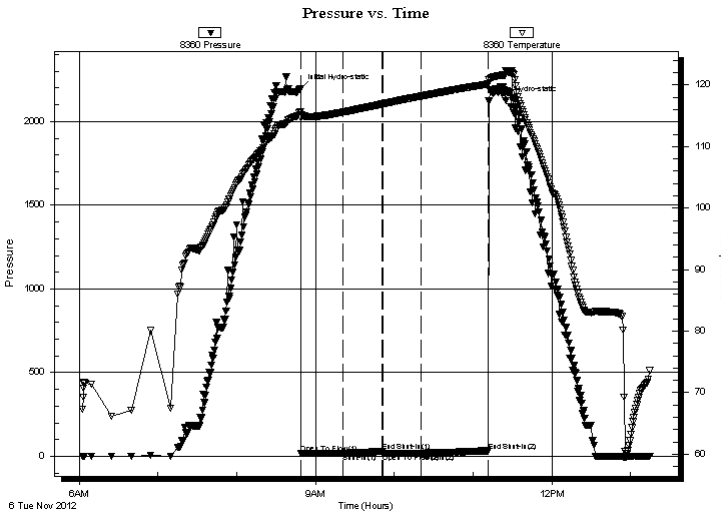
2012.11.06 @ 08:48:53

Time Off Btm:

2012.11.06 @ 11:11:53

TEST COMMENT: IF-Weak surface blow .
ISI-Dead no return
FF-Dead no blow .
FSI-Dead no return.

PRESSURE SUMMARY



Time (Min.)	Pressure (psig)	Temp (deg F)	Annotation
0	2195.84	115.72	Initial Hydro-static
1	17.77	114.71	Open To Flow (1)
32	19.12	115.57	Shut-In(1)
62	30.59	116.92	End Shut-In(1)
63	19.38	116.93	Open To Flow (2)
92	19.51	118.20	Shut-In(2)
143	31.82	120.15	End Shut-In(2)
143	2122.49	120.89	Final Hydro-static

Recovery

Length (ft)	Description	Volume (bbl)
5.00	100%M	0.02

* Recovery from multiple tests

Gas Rates

Choke (inches)	Pressure (psig)	Gas Rate (Mcf/d)



**TRILOBITE
TESTING, INC.**

DRILL STEM TEST REPORT

TOOL DIAGRAM

FIML Natural Resources LLC

24-9s-33w Thomas,KS

410 17th St. STE 900
Denver CO. 80202

Herbel #11B-29-933

Job Ticket: 49835

DST#: 6

ATTN: Gary Doke / Jim Musg

Test Start: 2012.11.06 @ 06:02:38

Tool Information

Drill Pipe:	Length: 4204.00 ft	Diameter: 3.80 inches	Volume: 58.97 bbl	Tool Weight: 1500.00 lb
Heavy Wt. Pipe:	Length: 0.00 ft	Diameter: 0.00 inches	Volume: 0.00 bbl	Weight set on Packer: 20000.00 lb
Drill Collar:	Length: 366.00 ft	Diameter: 2.25 inches	Volume: 1.80 bbl	Weight to Pull Loose: 110000.0 lb
			<u>Total Volume: 60.77 bbl</u>	Tool Chased 0.00 ft
Drill Pipe Above KB:	32.00 ft			String Weight: Initial 70000.00 lb
Depth to Top Packer:	4558.00 ft			Final 70000.00 lb
Depth to Bottom Packer:	ft			
Interval between Packers:	57.00 ft			
Tool Length:	77.00 ft			
Number of Packers:	2	Diameter: 6.75 inches		

Tool Comments:

Tool Description

Tool Description	Length (ft)	Serial No.	Position	Depth (ft)	Accum. Lengths
Change Over Sub	1.00			4539.00	
Shut In Tool	5.00			4544.00	
Hydraulic tool	5.00			4549.00	
Packer	5.00			4554.00	20.00 Bottom Of Top Packer
Packer	4.00			4558.00	
Stubb	1.00			4559.00	
Perforations	5.00			4564.00	
Recorder	0.00	8360	Inside	4564.00	
Recorder	0.00	8353	Outside	4564.00	
Perforations	14.00			4578.00	
Change Over Sub	1.00			4579.00	
Drill Pipe	32.00			4611.00	
Change Over Sub	1.00			4612.00	
Bullnose	3.00			4615.00	57.00 Bottom Packers & Anchor

Total Tool Length: 77.00



**TRILOBITE
TESTING, INC.**

DRILL STEM TEST REPORT

FLUID SUMMARY

FIML Natural Resources LLC

24-9s-33w Thomas,KS

410 17th St. STE 900
Denver CO. 80202

Herbel #11B-29-933

Job Ticket: 49835

DST#: 6

ATTN: Gary Doke / Jim Musg

Test Start: 2012.11.06 @ 06:02:38

Mud and Cushion Information

Mud Type: Gel Chem

Cushion Type:

Oil API:

deg API

Mud Weight: 9.00 lb/gal

Cushion Length:

ft

Water Salinity:

ppm

Viscosity: 51.00 sec/qt

Cushion Volume:

bbbl

Water Loss: 6.39 in³

Gas Cushion Type:

Resistivity: ohm.m

Gas Cushion Pressure:

psig

Salinity: 3000.00 ppm

Filter Cake: 1.00 inches

Recovery Information

Recovery Table

Length ft	Description	Volume bbl
5.00	100%M	0.025

Total Length: 5.00 ft Total Volume: 0.025 bbl

Num Fluid Samples: 0

Num Gas Bombs: 0

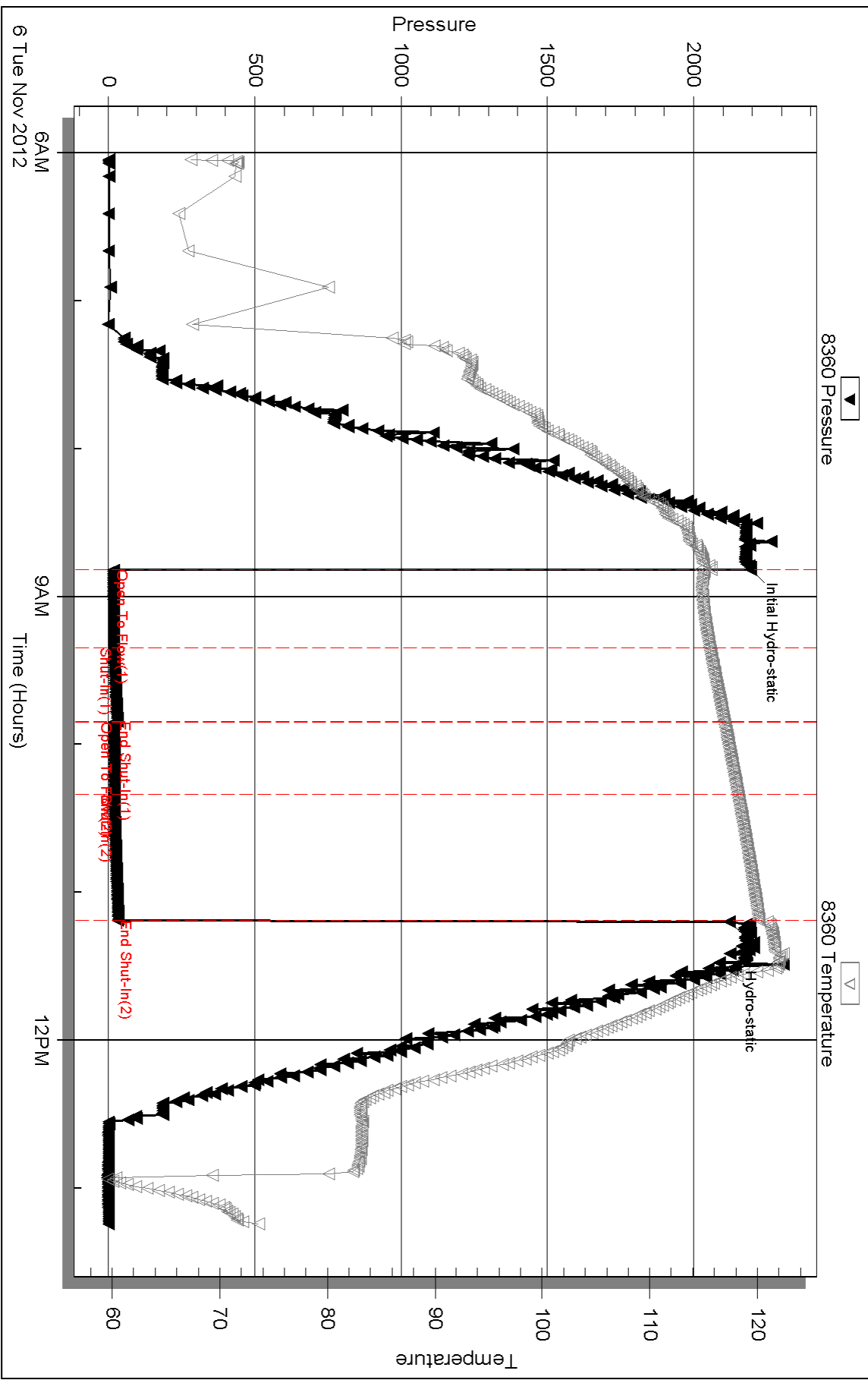
Serial #:

Laboratory Name:

Laboratory Location:

Recovery Comments:

Pressure vs. Time

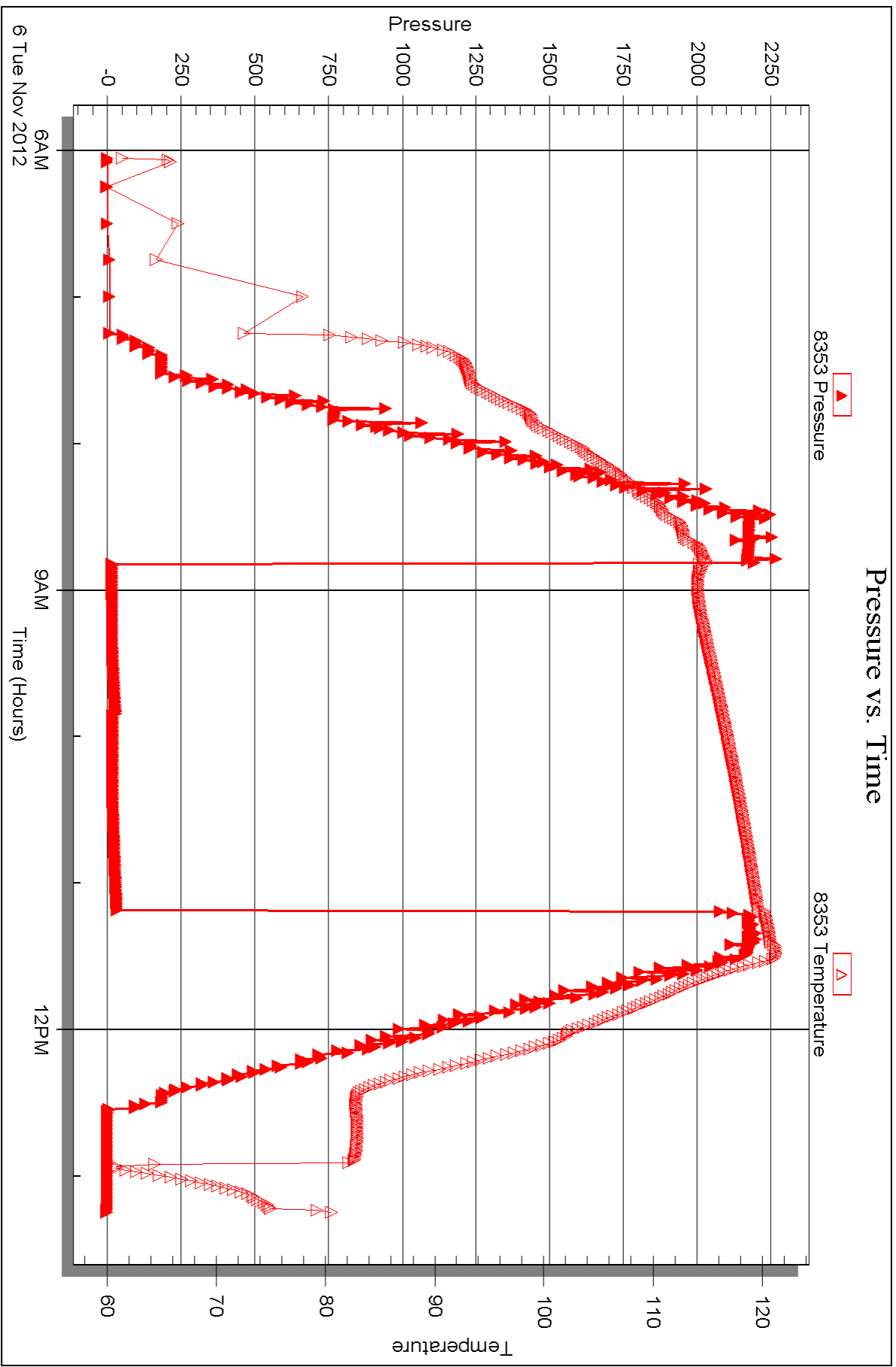


Serial #: 8353

Outside FIML Natural Resources LLC

Herbel #11B-29-933

DST Test Number: 6





DRILL STEM TEST REPORT

Prepared For: **FIML Natural Resources LLC**

410 17th St. STE 900
Denver CO. 80202

ATTN: Gary Doke / Jim Musg

Herbel #11B-29-933

24-9s-33w Thomas,KS

Start Date: 2012.11.07 @ 00:35:27

End Date: 2012.11.07 @ 09:33:57

Job Ticket #: 49836 DST #: 7

Trilobite Testing, Inc
PO Box 362 Hays, KS 67601
ph: 785-625-4778 fax: 785-625-5620

Printed: 2012.11.15 @ 14:06:00



TRILOBITE TESTING, INC.

DRILL STEM TEST REPORT

FIML Natural Resources LLC

24-9s-33w Thomas,KS

410 17th St. STE 900
Denver CO. 80202

Herbel #11B-29-933

ATTN: Gary Doke / Jim Musg

Job Ticket: 49836

DST#: 7

Test Start: 2012.11.07 @ 00:35:27

GENERAL INFORMATION:

Formation: **Spergen**

Deviated: No Whipstock: ft (KB)

Time Tool Opened: 03:22:12

Time Test Ended: 09:33:57

Test Type: Conventional Bottom Hole (Reset)

Tester: Tate Lang

Unit No: 40

Interval: 4671.00 ft (KB) To 4694.00 ft (KB) (TVD)

Reference Elevations: 3106.00 ft (KB)

Total Depth: 4694.00 ft (KB) (TVD)

3096.00 ft (CF)

Hole Diameter: 7.88 inches Hole Condition: Good

KB to GR/CF: 10.00 ft

Serial #: 8360

Inside

Press @ Run Depth: 140.13 psig @ 4672.00 ft (KB)

Capacity: 8000.00 psig

Start Date: 2012.11.07

End Date:

2012.11.07

Last Calib.:

2012.11.07

Start Time: 00:35:32

End Time:

09:33:57

Time On Btm:

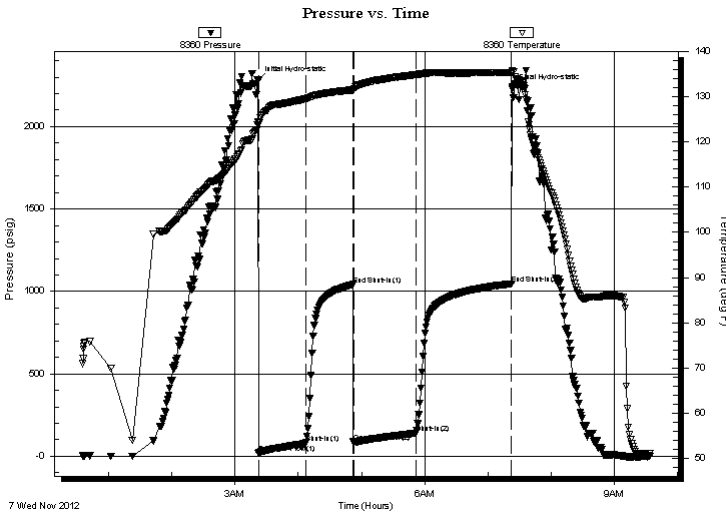
2012.11.07 @ 03:21:57

Time Off Btm:

2012.11.07 @ 07:22:42

TEST COMMENT: IF-B.O.B. In 23 mins.
ISI-Weak return blow built 2" died back to 1/2"
FF-B.O.B. In 30 mins.
FSI-Weak return blow built to 2 1/2" died back to 1/2"

PRESSURE SUMMARY



Time (Min.)	Pressure (psig)	Temp (deg F)	Annotation
0	2280.13	124.54	Initial Hydro-static
1	19.08	123.74	Open To Flow (1)
45	77.56	129.53	Shut-In(1)
90	1041.61	131.47	End Shut-In(1)
91	84.25	131.58	Open To Flow (2)
150	140.13	134.84	Shut-In(2)
241	1046.46	135.32	End Shut-In(2)
241	2228.67	135.76	Final Hydro-static

Recovery

Length (ft)	Description	Volume (bbl)
93.00	10%O 40%M 50%W	0.46
31.00	40%G 40%O 20%M	0.15
93.00	20%G 20%O 60%M	0.46
124.00	10%G 90%O	0.61
0.00	495 G.I.P.	0.00

Gas Rates

Choke (inches)	Pressure (psig)	Gas Rate (Mcf/d)

* Recovery from multiple tests



**TRILOBITE
TESTING, INC.**

DRILL STEM TEST REPORT

TOOL DIAGRAM

FIML Natural Resources LLC

24-9s-33w Thomas,KS

410 17th St. STE 900
Denver CO. 80202

Herbel #11B-29-933

Job Ticket: 49836

DST#: 7

ATTN: Gary Doke / Jim Musg

Test Start: 2012.11.07 @ 00:35:27

Tool Information

Drill Pipe:	Length: 4301.00 ft	Diameter: 3.80 inches	Volume: 60.33 bbl	Tool Weight: 1500.00 lb
Heavy Wt. Pipe:	Length: 0.00 ft	Diameter: 0.00 inches	Volume: 0.00 bbl	Weight set on Packer: 20000.00 lb
Drill Collar:	Length: 366.00 ft	Diameter: 2.25 inches	Volume: 1.80 bbl	Weight to Pull Loose: 88000.00 lb
			<u>Total Volume: 62.13 bbl</u>	Tool Chased 0.00 ft
Drill Pipe Above KB:	16.00 ft			String Weight: Initial 70000.00 lb
Depth to Top Packer:	4671.00 ft			Final 71000.00 lb
Depth to Bottom Packer:	ft			
Interval between Packers:	23.00 ft			
Tool Length:	43.00 ft			
Number of Packers:	2	Diameter: 6.75 inches		

Tool Comments:

Tool Description	Length (ft)	Serial No.	Position	Depth (ft)	Accum. Lengths
------------------	-------------	------------	----------	------------	----------------

Change Over Sub	1.00			4652.00	
Shut In Tool	5.00			4657.00	
Hydraulic tool	5.00			4662.00	
Packer	5.00			4667.00	20.00 Bottom Of Top Packer
Packer	4.00			4671.00	
Stubb	1.00			4672.00	
Recorder	0.00	8360	Inside	4672.00	
Recorder	0.00	8353	Outside	4672.00	
Perforations	19.00			4691.00	
Bullnose	3.00			4694.00	23.00 Bottom Packers & Anchor
Total Tool Length:	43.00				



**TRILOBITE
TESTING, INC.**

DRILL STEM TEST REPORT

FLUID SUMMARY

FIML Natural Resources LLC

24-9s-33w Thomas,KS

410 17th St. STE 900
Denver CO. 80202

Herbel #11B-29-933

Job Ticket: 49836

DST#: 7

ATTN: Gary Doke / Jim Musg

Test Start: 2012.11.07 @ 00:35:27

Mud and Cushion Information

Mud Type: Gel Chem

Cushion Type:

Oil API:

38 deg API

Mud Weight: 9.00 lb/gal

Cushion Length:

ft

Water Salinity:

32000 ppm

Viscosity: 51.00 sec/qt

Cushion Volume:

bbbl

Water Loss: 6.38 in³

Gas Cushion Type:

Resistivity: ohm.m

Gas Cushion Pressure:

psig

Salinity: 3000.00 ppm

Filter Cake: 1.00 inches

Recovery Information

Recovery Table

Length ft	Description	Volume bbbl
93.00	10%O 40%M 50%W	0.457
31.00	40%G 40%O 20%M	0.152
93.00	20%G 20%O 60%M	0.457
124.00	10%G 90%O	0.610
0.00	495 G.I.P.	0.000

Total Length: 341.00 ft Total Volume: 1.676 bbl

Num Fluid Samples: 0

Num Gas Bombs: 0

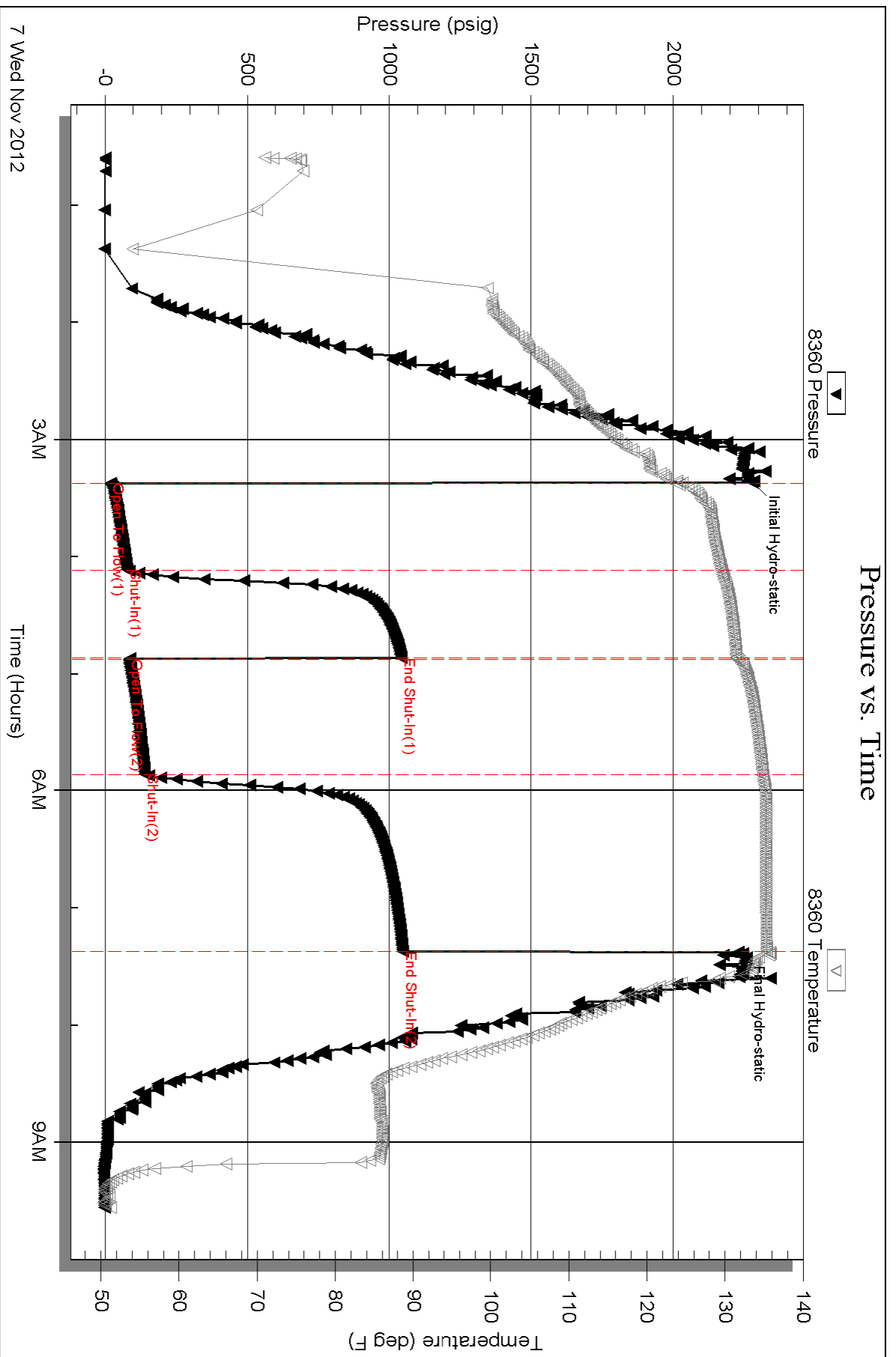
Serial #:

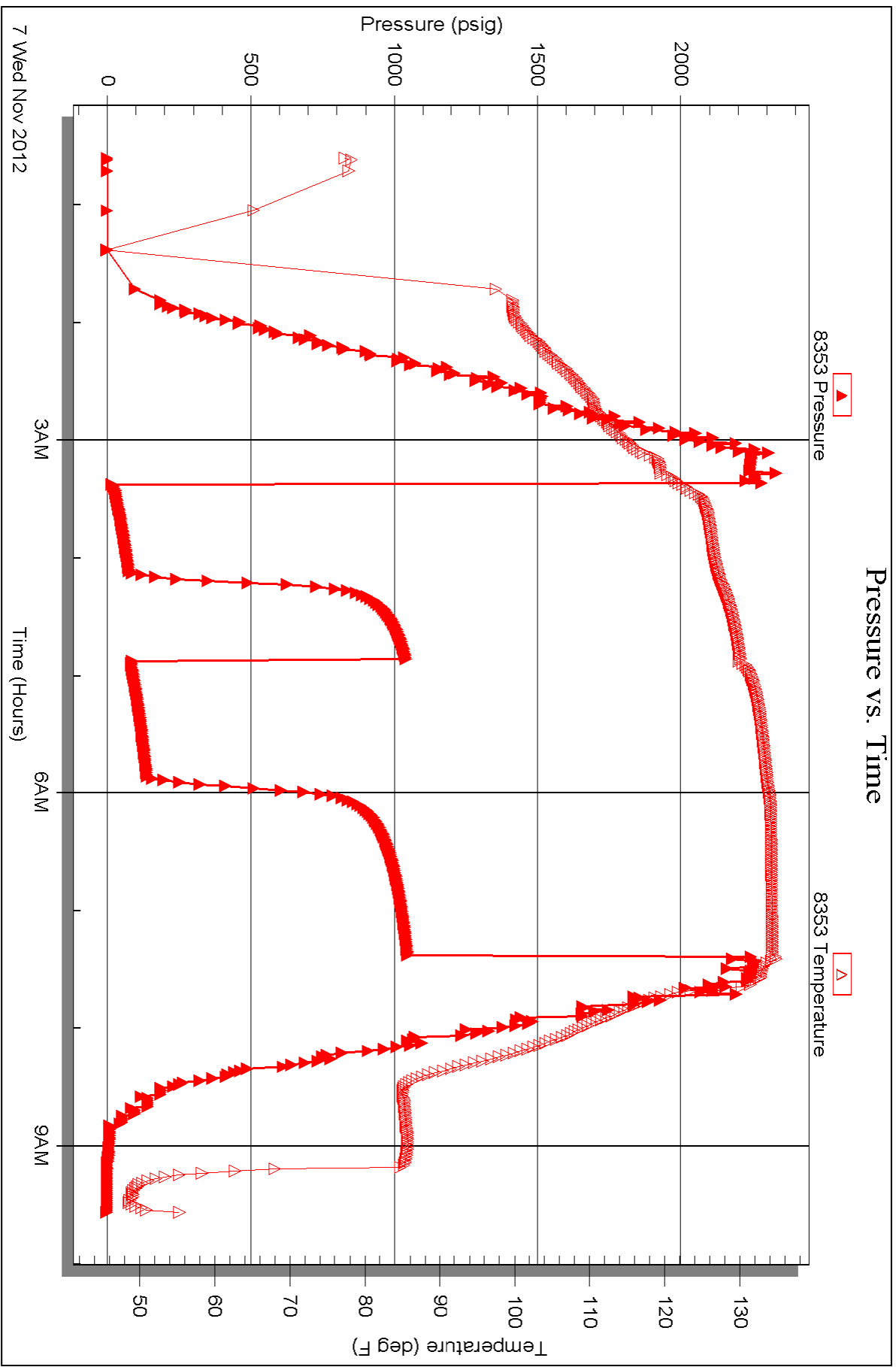
Laboratory Name:

Laboratory Location:

Recovery Comments: Oil API 39 @ 50F

API RW .302 @ 48F = 32000







TRILOBITE TESTING INC.

1515 Commerce Parkway • Hays, Kansas 67601

Test Ticket

NO. 49903

4/10

Well Name & No. Herbel 11B-29-933 Test No. DST #1 Date 11-2-12
 Company FIML Natural Resources LLC Elevation 3106 KB 3096 GL
 Address 410 17th St. STE 900 Denver CO. 80202
 Co. Rep / Geo. Gary Duke / Kurt Talbott Rig H-2 Rig #1
 Location: Sec. 24 Twp. 9s Rge. 33w Co. Thomas State KS

Interval Tested 4176 - 4250 Zone Tested LKC "H"
 Anchor Length 74 Drill Pipe Run _____ Mud Wt. 9.1
 Top Packer Depth 4172 Drill Collars Run 306 Vis 51
 Bottom Packer Depth 4176 Wt. Pipe Run 0 WL 8.8
 Total Depth 4250 Chlorides 2000 ppm System LCM 215
 Blow Description - Mis-Run - Bridge around 2652 couldnt get thru it

Rec	Feet of	%gas	%oil	%water	%mud

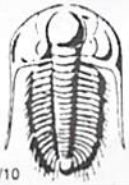
Rec Total _____ BHT _____ Gravity _____ API RW _____ @ _____ °F Chlorides _____ ppm

(A) Initial Hydrostatic Test 1050 T-On Location 6:16
 (B) First Initial Flow Jars _____ T-Started 7:02
 (C) First Final Flow Safety Joint _____ T-Open _____
 (D) Initial Shut-In Circ Sub NIC T-Pulled _____
 (E) Second Initial Flow Hourly Standby _____ T-Out 10:20
 (F) Second Final Flow Mileage 128 R/T 198.40 Comments _____
 (G) Final Shut-In Sampler _____
 (H) Final Hydrostatic Straddle _____
 Shale Packer _____
 Extra Packer _____
 Extra Recorder _____
 Day Standby _____
 Accessibility 150
 Sub Total 1398.40

Ruined Shale Packer _____
 Ruined Packer 320
 Extra Copies _____
 Sub Total 320
 Total 1718.40
 MP/DST Disc't _____

Approved By [Signature] Our Representative [Signature]

TriLOBITE TESTING Inc. shall not be liable for damaged of any kind of the property or personnel of the one for whom a test is made, or for any loss suffered or sustained, directly or indirectly, through the use of its equipment, or its statements or opinion concerning the results of any test, tools lost or damaged in the hole shall be paid for at cost by the party for whom the test is made.



TRILOBITE TESTING INC.

1515 Commerce Parkway • Hays, Kansas 67601

Test Ticket

NO. 49904

Well Name & No. Herbel 11B-29-933 Test No. DST #2 Date 11-2-12
 Company FIML Natural Resources LLC Elevation 3106 KB 3096 GL
 Address 410 17th St. STE 900 Denver CO. 80202
 Co. Rep / Geo. Gary Duke / Jim Musgrove Rig H-2 R-5 #1
 Location: Sec. 24 Twp. 9S Rge. 33W Co. Thomas State KS

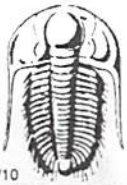
Interval Tested 4176-4250 Zone Tested LRC "H"
 Anchor Length 74 Drill Pipe Run 3800 Mud Wt. 9.1
 Top Packer Depth 4172 Drill Collars Run 366 Vis 51
 Bottom Packer Depth 4176 Wt. Pipe Run 0 WL 8.8
 Total Depth 4250 Chlorides 2000 ppm System LCM 216
 Blow Description IF - Weak Surface Blow Built to 2 3/4"
ISJ - No Blow
FF - Weak Surface Blow 1/2"
FSI - No Blow

Rec	Feet of	%gas	%oil	%water	%mud
<u>10</u>	<u>WCM with skin of Oil on Top</u>		<u>37</u>	<u>63</u>	
<u>92</u>	<u>MCW</u>		<u>73</u>	<u>27</u>	
<u>92</u>	<u>MCW</u>		<u>90</u>	<u>10</u>	

Rec Total 194 BHT 120 Gravity ✓ API RW .284 @ 41 °F Chlorides 43000 ppm
 (A) Initial Hydrostatic 2071 Test 1250 T-On Location 15:26
 (B) First Initial Flow 16 Jars _____ T-Started 16:20
 (C) First Final Flow 58 Safety Joint _____ T-Open 18:45
 (D) Initial Shut-In 1249 Circ Sub NIC T-Pulled _____
 (E) Second Initial Flow 61 Hourly Standby _____ T-Out 00 32
 (F) Second Final Flow 121 Mileage 128 R/T 198.40 Comments _____
 (G) Final Shut-In 1255 Sampler _____
 (H) Final Hydrostatic 1971 Straddle _____ Ruined Shale Packer _____
 Shale Packer _____ Ruined Packer _____
 Extra Packer _____ Extra Copies _____
 Extra Recorder _____ Sub Total 0
 Day Standby _____ Total 1598.40
 Accessibility 150 MP/DST Disc't _____
 Sub Total 1598.40

Approved By [Signature] Our Representative Will Marz

Trilobite Testing Inc. shall not be liable for damaged of any kind of the property or personnel of the one for whom a test is made, or for any loss suffered or sustained, directly or indirectly, through the use of its equipment, or its statements or opinion concerning the results of any test, tools lost or damaged in the hole shall be paid for at cost by the party for whom the test is made.



TRILOBITE TESTING INC.

1515 Commerce Parkway • Hays, Kansas 67601

Test Ticket

NO. 49905

Well Name & No. Herbel #11B-29-933 Test No. DST #3 Date 11-3-12
 Company FTML Natural Resources LLC Elevation 3106 KB 3096 GL
 Address 410 17th St. STE 900 Denver CO. 80202
 Co. Rep / Geo. Gary Duke \ Jim Musgrove Rig H-2 Ris #1
 Location: Sec. 24 Twp. 9S Rge. 33W Co. Thomas State KS

Interval Tested 4244-4292 Zone Tested LRC "T4J"
 Anchor Length 48 Drill Pipe Run 3862 Mud Wt. 9.2
 Top Packer Depth 4240 Drill Collars Run 366 Vis 52
 Bottom Packer Depth 4244 Wt. Pipe Run 0 WL 9.6
 Total Depth 4292 Chlorides 2500 ppm System LCM 216

Blow Description IF- Weak Surface Blow Built to 34"
ISI- No Blow
FF- Weak Surface Blow Dial in 2 1/2 in.
FSI- No Blow

Rec	Feet of	%gas	%oil	%water	%mud
<u>10</u>	<u>Mud</u>			<u>100</u>	
Rec	Feet of	%gas	%oil	%water	%mud
Rec	Feet of	%gas	%oil	%water	%mud
Rec	Feet of	%gas	%oil	%water	%mud
Rec	Feet of	%gas	%oil	%water	%mud

Rec Total _____ BHT _____ Gravity _____ API RW _____ @ _____ °F Chlorides _____ ppm

(A) Initial Hydrostatic 2139 Test 1250 T-On Location 9:36
 (B) First Initial Flow 14 Jars _____ T-Started ~~9:45~~ 9:50
 (C) First Final Flow 22 Safety Joint _____ T-Open 11:45
 (D) Initial Shut-In 1224 Circ Sub NIC T-Pulled 14:08
 (E) Second Initial Flow 23 Hourly Standby _____ T-Out 16:07
 (F) Second Final Flow 27 Mileage 128 R/T 198.40 Comments _____
 (G) Final Shut-In 1257 Sampler _____
 (H) Final Hydrostatic 1894 Straddle _____
 Shale Packer _____
 Extra Packer _____
 Extra Recorder _____
 Day Standby _____
 Accessibility 150
 Sub Total 1598.40

Ruined Shale Packer _____
 Ruined Packer _____
 Extra Copies _____
 Sub Total 0
 Total 1598.40
 MP/DST Disc't _____

Initial Open 30
 Initial Shut-In 30
 Final Flow 30
 Final Shut-In 45

Approved By [Signature]

Our Representative [Signature]

Trilobite Testing Inc. shall not be liable for damaged of any kind of the property or personnel of the one for whom a test is made, or for any loss suffered or sustained, directly or indirectly, through the use of its equipment, or its statements or opinion concerning the results of any test, tools lost or damaged in the hole shall be paid for at cost by the party for whom the test is made.



TRILOBITE TESTING INC.

1515 Commerce Parkway • Hays, Kansas 67601

Test Ticket

NO. **49833**

Well Name & No. Herbel 11B-29-933 Test No. ~~A~~ **4** Date 11-04-12
 Company FIML Natural Resources LLC Elevation 3106 KB 3096 GL
 Address 410 17th St, STE 900 Denver CO. 80202
 Co. Rep / Geo. Jim Musgrave - Gray Dake Rig H2 Rig#1
 Location: Sec. 24 Twp. 9s Rge. 33W Co. Thomas State KS

Interval Tested 4454 - 4500 Zone Tested Myric Station
 Anchor Length 46' Drill Pipe Run 4079 Mud Wt. 9.2
 Top Packer Depth 4450 Drill Collars Run 366 Vis 51
 Bottom Packer Depth 4454 Wt. Pipe Run 0 WL 7.2
 Total Depth 4500 Chlorides 3000 ppm System LCM 1F

Blow Description IF - B.O.B. in 15 mins
ISI Weak surface return blow built to lin
FF - B.O.B. in 20 mins
FSL Fair return blow built to 4 in.

Rec	Feet of	%gas	%oil	%water	%mud
<u>279</u>	<u>VSGOCMW</u>	<u>5</u>	<u>5</u>	<u>55</u>	<u>35</u>
<u>166</u>	<u>VSGOCM</u>	<u>2</u>	<u>38</u>		<u>60</u>
<u>51</u>	<u>GO</u>	<u>2</u>	<u>98</u>		
<u>527</u>	<u>Weak GIP</u>	<u>100</u>			

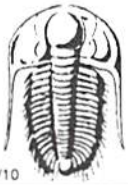
Rec Total 496 BHT 134 Gravity 35 API RW - @ - °F Chlorides - ppm

(A) Initial Hydrostatic 2172 Test 1250 T-On Location 14:40
 (B) First Initial Flow 44 Jars - T-Started 15:01
 (C) First Final Flow 167 Safety Joint No Charge T-Open 17:40
 (D) Initial Shut-In 946 Circ Sub N/C T-Pulled 21:40
 (E) Second Initial Flow 173 Hourly Standby - T-Out 0:28
 (F) Second Final Flow 218 Mileage 128 R/T 198.40
 (G) Final Shut-In 907 Sampler -
 (H) Final Hydrostatic 215e Straddle -
 Shale Packer -
 Shale Packer -
 Extra Packer -
 Extra Recorder -
 Day Standby -
 Accessibility 150
 Sub Total 1598.40

Initial Open 45
 Initial Shut-In 45
 Final Flow 60
 Final Shut-In 90

Approved By [Signature] Our Representative [Signature]

TriLOBITE TESTING INC. shall not be liable for damaged of any kind of the property or personnel of the one for whom a test is made, or for any loss suffered or sustained, directly or indirectly, through the use of its equipment, or its statements or opinion concerning the results of any test, tools lost or damaged in the hole shall be paid for at cost by the party for whom the test is made.



TRILOBITE TESTING INC.

1515 Commerce Parkway • Hays, Kansas 67601

Test Ticket

NO. **49834**

Well Name & No. Herbel 11B-29-933 Test No. 5 Date 11-5-12
 Company FIML Natural Resources LLC Elevation 3106 KB 3096 GL
 Address _____
 Co. Rep / Geo. Sim Musgrove - Gray Duke Rig H2 Rig #1
 Location: Sec. 24 Twp. 9S Rge. 33W Co. Thomas State KS

Interval Tested 4500 - 4555 Zone Tested Ft Scott
 Anchor Length 55' Drill Pipe Run 4143 Mud Wt. 9.2
 Top Packer Depth 4496 Drill Collars Run 366 Vis 48
 Bottom Packer Depth 4500 Wt. Pipe Run 0 WL 6.4
 Total Depth 4500 Chlorides 2000 ppm System LCM 1

Blow Description IF Surged when tool open the died. Flushed tool / weak surface blow built to 1/4"
ISL - Dead no return (Tool slid 10')
FF - Dead no Blow (Had to make com. to get to bottom)
FSL - Dead no return blow

Rec	Feet of	%gas	%oil	%water	%mud
Rec <u>100</u>	Feet of <u>Mud skim of oil on top of tool</u>				<u>100</u> %mud
Rec _____	Feet of _____				
Rec _____	Feet of _____				

Rec Total 100 BHT 124 Gravity _____ API RW _____ @ _____ °F Chlorides _____ ppm

(A) Initial Hydrostatic 2230 Test 1250 T-On Location 10:06
 (B) First Initial Flow 84 Jars _____ T-Started 10:49
 (C) First Final Flow 88 Safety Joint _____ T-Open 13:30
 (D) Initial Shut-In 526 Circ Sub N/C T-Pulled 15:30
 (E) Second Initial Flow 89 Hourly Standby _____ T-Out 17:35
 (F) Second Final Flow 91 Mileage 128 R/T 198.40
 (G) Final Shut-In 285 Sampler _____
 (H) Final Hydrostatic 2192 Straddle _____

Initial Open 30 Ruined Shale Packer _____
 Initial Shut-In 30 Ruined Packer _____
 Final Flow 30 Extra Packer _____
 Final Shut-In 30 Extra Recorder _____
 Accessibility 150 Sub Total 1598.40
 Sub Total 1598.40

Approved By [Signature] Our Representative [Signature]

Trilobite Testing Inc. shall not be liable for damaged of any kind of the property or personnel of the one for whom a test is made, or for any loss suffered or sustained, directly or indirectly, through the use of its equipment, or its statements or opinion concerning the results of any test, tools lost or damaged in the hole shall be paid for at cost by the party for whom the test is made.



TRILOBITE TESTING INC.

1515 Commerce Parkway • Hays, Kansas 67601

Test Ticket

NO. 49835

Well Name & No. Herbel 11B-29-933 Test No. 6 Date 10-6-12
 Company FIML Natural Resources LLC Elevation 3106 KB 3096 GL
 Address _____
 Co. Rep / Geo. Jim Musgrove - Gray Doherty Rig #2 Rig 1
 Location: Sec. 24 Twp. 9S Rge. 33W Co. Thomas State KS

Interval Tested 4558 - 4615 Zone Tested Johnson
 Anchor Length 57 Drill Pipe Run 4204 Mud Wt. 9.2
 Top Packer Depth 4554 Drill Collars Run 366 Vis 51
 Bottom Packer Depth 4558 Wt. Pipe Run 0 WL 6.4
 Total Depth 4615 Chlorides 3000 ppm System LCM 2#

Blow Description IF - Weak surface blow
ISI - Dead No Retrun
FF - Dead No Blow
FSTI - Dead No Retrun

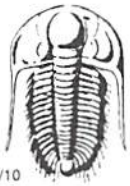
Rec	Feet of	%gas	%oil	%water	%mud
Rec	Feet of	%gas	%oil	%water	%mud
Rec <u>5</u>	Feet of <u>Mud</u>	%gas	%oil	%water	<u>100</u> %mud
Rec	Feet of	%gas	%oil	%water	%mud
Rec	Feet of	%gas	%oil	%water	%mud

Rec Total 5 # BHT 121 Gravity _____ API RW _____ @ _____ °F Chlorides _____ ppm

(A) Initial Hydrostatic <u>2196</u>	<input checked="" type="checkbox"/> Test <u>1250</u>	T-On Location <u>5:45</u>
(B) First Initial Flow <u>18</u>	<input type="checkbox"/> Jars _____	T-Started <u>6:02</u>
(C) First Final Flow <u>19</u>	<input type="checkbox"/> Safety Joint _____	T-Open <u>8:50</u>
(D) Initial Shut-In <u>31</u>	<input checked="" type="checkbox"/> Circ Sub <u>N/C</u>	T-Pulled <u>10:05</u>
(E) Second Initial Flow <u>19</u>	<input type="checkbox"/> Hourly Standby _____	T-Out <u>13:15</u>
(F) Second Final Flow <u>20</u>	<input checked="" type="checkbox"/> Mileage <u>128 R/T</u> 198.40	Comments _____
(G) Final Shut-In <u>32</u>	<input type="checkbox"/> Sampler _____	
(H) Final Hydrostatic <u>2122</u>	<input type="checkbox"/> Straddle _____	<input type="checkbox"/> Ruined Shale Packer _____
Initial Open <u>30</u>	<input type="checkbox"/> Shale Packer _____	<input type="checkbox"/> Ruined Packer _____
Initial Shut-In <u>30</u>	<input type="checkbox"/> Extra Packer _____	<input type="checkbox"/> Extra Copies _____
Final Flow <u>30</u>	<input type="checkbox"/> Extra Recorder _____	Sub Total <u>0</u>
Final Shut-In <u>45</u>	<input type="checkbox"/> Day Standby _____	Total <u>1598.40</u>
	<input checked="" type="checkbox"/> Accessibility <u>150</u>	MP/DST Disc't _____
	Sub Total <u>1598.40</u>	

Approved By [Signature] Our Representative [Signature]

Trilobite Testing Inc. shall not be liable for damaged of any kind of the property or personnel of the one for whom a test is made, or for any loss suffered or sustained, directly or indirectly, through the use of its equipment, or its statements or opinion concerning the results of any test, tools lost or damaged in the hole shall be paid for at cost by the party for whom the test is made.



TRILOBITE TESTING INC.

1515 Commerce Parkway • Hays, Kansas 67601

Test Ticket

NO. **49836**

Well Name & No. Herbel 11B-29-933 Test No. 7 Date 11-7-12
 Company FIML Natural Resources LLC Elevation 3106 KB 3096 GL
 Address _____
 Co. Rep / Geo. Jim Musgrove - Gary Dolte Rig H2#1
 Location: Sec. 24 Twp. 9S Rge. 33W Co. Thomas State KS

Interval Tested 4671 4694 Zone Tested Spergen
 Anchor Length _____ Drill Pipe Run 4301 Mud Wt. 9.2
 Top Packer Depth _____ Drill Collars Run 366 Vis 51
 Bottom Packer Depth 4671 Wt. Pipe Run 0 WL 6.4
 Total Depth 4694 Chlorides 3000 ppm System LCM 2+

Blow Description IF - B.O.B. In ~~23~~ 23 mins.
ISS - Weath return blow built to 2in, died back to 1/2 in.
FF - B.O.B. In 30 mins.
FSI - Weath return blow built to 2 1/2 in, died back to 1/2 in.

Rec	Feet of	%gas	%oil	%water	%mud
<u>124</u>	<u>60</u>	<u>10</u>	<u>90</u>		
<u>93</u>	<u>MCGO</u>	<u>20</u>	<u>20</u>		<u>60</u>
<u>93</u>	<u>DCMW</u>		<u>10</u>	<u>50</u>	<u>40</u>
<u>495</u>	<u>GTP</u>	<u>100</u>			
<u>31</u>	<u>MCGO</u>	<u>40</u>	<u>40</u>		<u>20</u>

Rec Total 341 BHT 136 Gravity 38 API RW 302@ 48 °F Chlorides 32000 ppm

(A) Initial Hydrostatic 2280 Test 1250 T-On Location 0:20
 (B) First Initial Flow 19 Jars _____ T-Started 0:35
 (C) First Final Flow 78 Safety Joint _____ T-Open 3:22
 (D) Initial Shut-In 1042 Circ Sub N/C T-Pulled 7:22
 (E) Second Initial Flow 84 Hourly Standby _____ T-Out 9:33
 (F) Second Final Flow 140 Mileage 198.40 Comments _____
 (G) Final Shut-In 1046 Sampler _____
 (H) Final Hydrostatic 2229 Straddle _____

Initial Open 45 Shale Packer _____ Ruined Packer 320
 Initial Shut-In 45 Extra Packer _____ Extra Copies _____
 Final Flow 60 Extra Recorder _____ Sub Total 320
 Final Shut-In 90 Day Standby _____ Total 1918.40
 Accessibility 150 MP/DST Disc't _____
 Sub Total 1918.40

Approved By [Signature] Our Representative [Signature]

Trilobite Testing Inc. shall not be liable for damaged of any kind of the property or personnel of the one for whom a test is made, or for any loss suffered or sustained, directly or indirectly, through the use of its equipment, or its statements or opinion concerning the results of any test, tools lost or damaged in the hole shall be paid for at cost by the party for whom the test is made.