



TRILOBITE TESTING, INC.

DRILL STEM TEST REPORT

Samuel Gary Jr. and Associates, Inc.

36 11s 22w Trego

1515 Wynkoop St. Ste 700
Denver, CO 80202

Shubert 2-36

Job Ticket: 48648

DST#: 1

ATTN: Chris Mitchell

Test Start: 2012.11.09 @ 18:33:00

GENERAL INFORMATION:

Formation: **LKC "A-C"**

Deviated: No Whipstock: 2320.00 ft (KB)

Time Tool Opened: 21:07:00

Time Test Ended: 03:12:00

Test Type: Conventional Bottom Hole (Initial)

Tester: Jim Svaty

Unit No: 41

Interval: 3595.00 ft (KB) To 3652.00 ft (KB) (TVD)

Reference Elevations: 2320.00 ft (KB)

Total Depth: 3652.00 ft (KB) (TVD)

2312.00 ft (CF)

Hole Diameter: 7.88 inches Hole Condition: Fair

KB to GR/CF: 8.00 ft

Serial #: 6752

Inside

Press @ Run Depth: 59.68 psig @ 3617.00 ft (KB)

Capacity: 8000.00 psig

Start Date: 2012.11.09

End Date:

2012.11.10

Last Calib.: 2012.11.10

Start Time: 18:33:01

End Time:

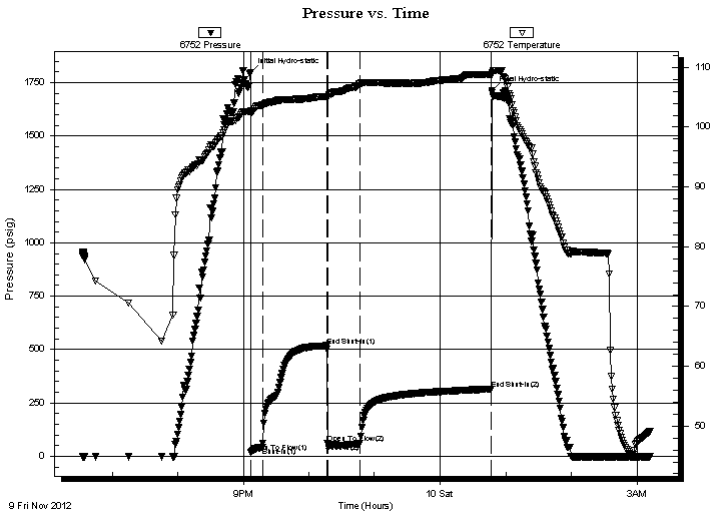
03:11:40

Time On Btm: 2012.11.09 @ 21:06:40

Time Off Btm: 2012.11.10 @ 00:47:20

TEST COMMENT: 10-IFP- Surface Blow Building to 2 1/4in
60-ISIP- No Blow
30-FFP- Surface Blow Building to 2 3/4in.
120-FSIP- No Blow

PRESSURE SUMMARY



Time (Min.)	Pressure (psig)	Temp (deg F)	Annotation
0	1796.27	102.69	Initial Hydro-static
1	18.61	102.48	Open To Flow (1)
11	43.34	103.66	Shut-In(1)
70	518.61	105.17	End Shut-In(1)
71	60.94	105.13	Open To Flow (2)
100	59.68	107.32	Shut-In(2)
220	315.58	108.77	End Shut-In(2)
221	1711.82	108.86	Final Hydro-static

Recovery

Length (ft)	Description	Volume (bbl)
97.00	Oil Speck Mud 100%	1.09

Gas Rates

	Choke (inches)	Pressure (psig)	Gas Rate (Mcf/d)



**TRILOBITE
TESTING, INC.**

DRILL STEM TEST REPORT

FLUID SUMMARY

Samuel Gary Jr. and Associates, Inc.

36 11s 22w Trego

1515 Wynkoop St. Ste 700
Denver, CO 80202

Shubert 2-36

Job Ticket: 48648

DST#: 1

ATTN: Chris Mitchell

Test Start: 2012.11.09 @ 18:33:00

Mud and Cushion Information

Mud Type: Gel Chem

Cushion Type:

Oil API:

deg API

Mud Weight: 9.00 lb/gal

Cushion Length:

ft

Water Salinity:

26000 ppm

Viscosity: 55.00 sec/qt

Cushion Volume:

bbbl

Water Loss: 7.98 in³

Gas Cushion Type:

Resistivity: ohm.m

Gas Cushion Pressure:

psig

Salinity: 2000.00 ppm

Filter Cake: inches

Recovery Information

Recovery Table

Length ft	Description	Volume bbbl
97.00	Oil Speck Mud 100%	1.087

Total Length: 97.00 ft Total Volume: 1.087 bbl

Num Fluid Samples: 0

Num Gas Bombs: 0

Serial #:

Laboratory Name:

Laboratory Location:

Recovery Comments: SAMPLER- 200ml Mud - 300ml Water - .367 @ 49 Show of Oil 110 psi

