



DRILL STEM TEST REPORT

Prepared For: **Baird Oil Co., Inc**

113 W Main
Logan, KS 67649

ATTN: Rich Bell

27-3s-22w Norton,KS

Esslinger Ranch Inc #1-27

Start Date: 2013.03.04 @ 16:19:00

End Date: 2013.03.04 @ 20:43:30

Job Ticket #: 51206 DST #: 1

Trilobite Testing, Inc
PO Box 362 Hays, KS 67601
ph: 785-625-4778 fax: 785-625-5620

Printed: 2013.03.11 @ 13:07:22



**TRILOBITE
TESTING, INC.**

DRILL STEM TEST REPORT

Baird Oil Co., Inc
113 W Main
Logan, KS 67649
ATTN: Rich Bell

Esslinger Ranch Inc #1-27
27-3s-22w Norton, KS
Job Ticket: 51206 **DST#: 1**
Test Start: 2013.03.04 @ 16:19:00

GENERAL INFORMATION:

Formation: **LKC "A"**
Deviated: No Whipstock: ft (KB)
Time Tool Opened: 18:10:45
Time Test Ended: 20:43:30
Interval: **3526.00 ft (KB) To 3546.00 ft (KB) (TVD)**
Total Depth: 3546.00 ft (KB) (TVD)
Hole Diameter: 7.88 inches Hole Condition: Good
Test Type: Conventional Bottom Hole (Initial)
Tester: Kevin Mack
Unit No: 43
Reference Elevations: 2299.00 ft (KB)
2289.00 ft (CF)
KB to GR/CF: 10.00 ft

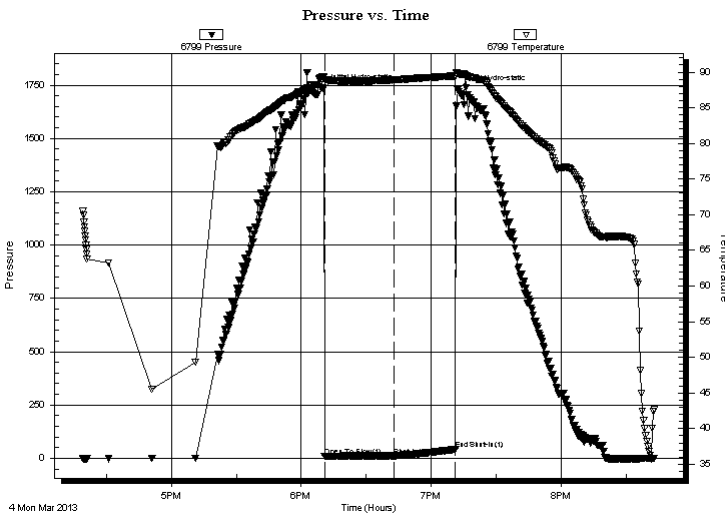
Serial #: 6799

Inside

Press @ Run Depth: 11.99 psig @ 3527.00 ft (KB) Capacity: 8000.00 psig
Start Date: 2013.03.04 End Date: 2013.03.04 Last Calib.: 2013.03.04
Start Time: 16:19:05 End Time: 20:43:29 Time On Btm: 2013.03.04 @ 18:10:15
Time Off Btm: 2013.03.04 @ 19:12:15

TEST COMMENT: 30 - IF- 1/4" Blow died in 20 min.
30 - IS- No Return
Pulled tool after Initial Shut In

PRESSURE SUMMARY



Time (Min.)	Pressure (psig)	Temp (deg F)	Annotation
0	1732.93	89.31	Initial Hydro-static
1	8.67	88.94	Open To Flow (1)
33	11.99	88.91	Shut-In(1)
61	42.51	89.47	End Shut-In(1)
62	1728.90	89.78	Final Hydro-static

Recovery

Length (ft)	Description	Volume (bbl)
3.00	Mud 100M	0.01

Gas Rates

Choke (inches)	Pressure (psig)	Gas Rate (Mcf/d)



**TRILOBITE
TESTING, INC.**

DRILL STEM TEST REPORT

TOOL DIAGRAM

Baird Oil Co., Inc
113 W Main
Logan, KS 67649
ATTN: Rich Bell

Esslinger Ranch Inc #1-27
27-3s-22w Norton,KS
Job Ticket: 51206 **DST#: 1**
Test Start: 2013.03.04 @ 16:19:00

Tool Information

Drill Pipe:	Length: 3410.00 ft	Diameter: 3.80 inches	Volume: 47.83 bbl	Tool Weight: 2000.00 lb
Heavy Wt. Pipe:	Length: 0.00 ft	Diameter: 0.00 inches	Volume: 0.00 bbl	Weight set on Packer: 25000.00 lb
Drill Collar:	Length: 120.00 ft	Diameter: 2.25 inches	Volume: 0.59 bbl	Weight to Pull Loose: 55000.00 lb
			<u>Total Volume: 48.42 bbl</u>	Tool Chased ft
Drill Pipe Above KB:	25.00 ft			String Weight: Initial 45000.00 lb
Depth to Top Packer:	3526.00 ft			Final 45000.00 lb
Depth to Bottom Packer:	ft			
Interval between Packers:	20.00 ft			
Tool Length:	41.00 ft			
Number of Packers:	2	Diameter: 6.75 inches		

Tool Comments:

Tool Description	Length (ft)	Serial No.	Position	Depth (ft)	Accum. Lengths
-------------------------	--------------------	-------------------	-----------------	-------------------	-----------------------

Change Over Sub	1.00			3506.00	
Shut In Tool	5.00			3511.00	
Hydraulic tool	5.00			3516.00	
Packer	5.00			3521.00	21.00 Bottom Of Top Packer
Packer	5.00			3526.00	
Stubb	1.00			3527.00	
Recorder	0.00	6799	Inside	3527.00	
Recorder	0.00	8648	Inside	3527.00	
Perforations	5.00			3532.00	
Perforations	9.00			3541.00	
Bullnose	5.00			3546.00	20.00 Bottom Packers & Anchor

Total Tool Length: 41.00



**TRILOBITE
TESTING, INC.**

DRILL STEM TEST REPORT

FLUID SUMMARY

Baird Oil Co., Inc
113 W Main
Logan, KS 67649
ATTN: Rich Bell

Esslinger Ranch Inc #1-27
27-3s-22w Norton,KS
Job Ticket: 51206 **DST#: 1**
Test Start: 2013.03.04 @ 16:19:00

Mud and Cushion Information

Mud Type: Gel Chem	Cushion Type:	Oil API:	deg API
Mud Weight: 9.00 lb/gal	Cushion Length: ft	Water Salinity:	ppm
Viscosity: 62.00 sec/qt	Cushion Volume: bbl		
Water Loss: 6.38 in ³	Gas Cushion Type:		
Resistivity: 0.00 ohm.m	Gas Cushion Pressure: psig		
Salinity: 1600.00 ppm			
Filter Cake: 1.00 inches			

Recovery Information

Recovery Table

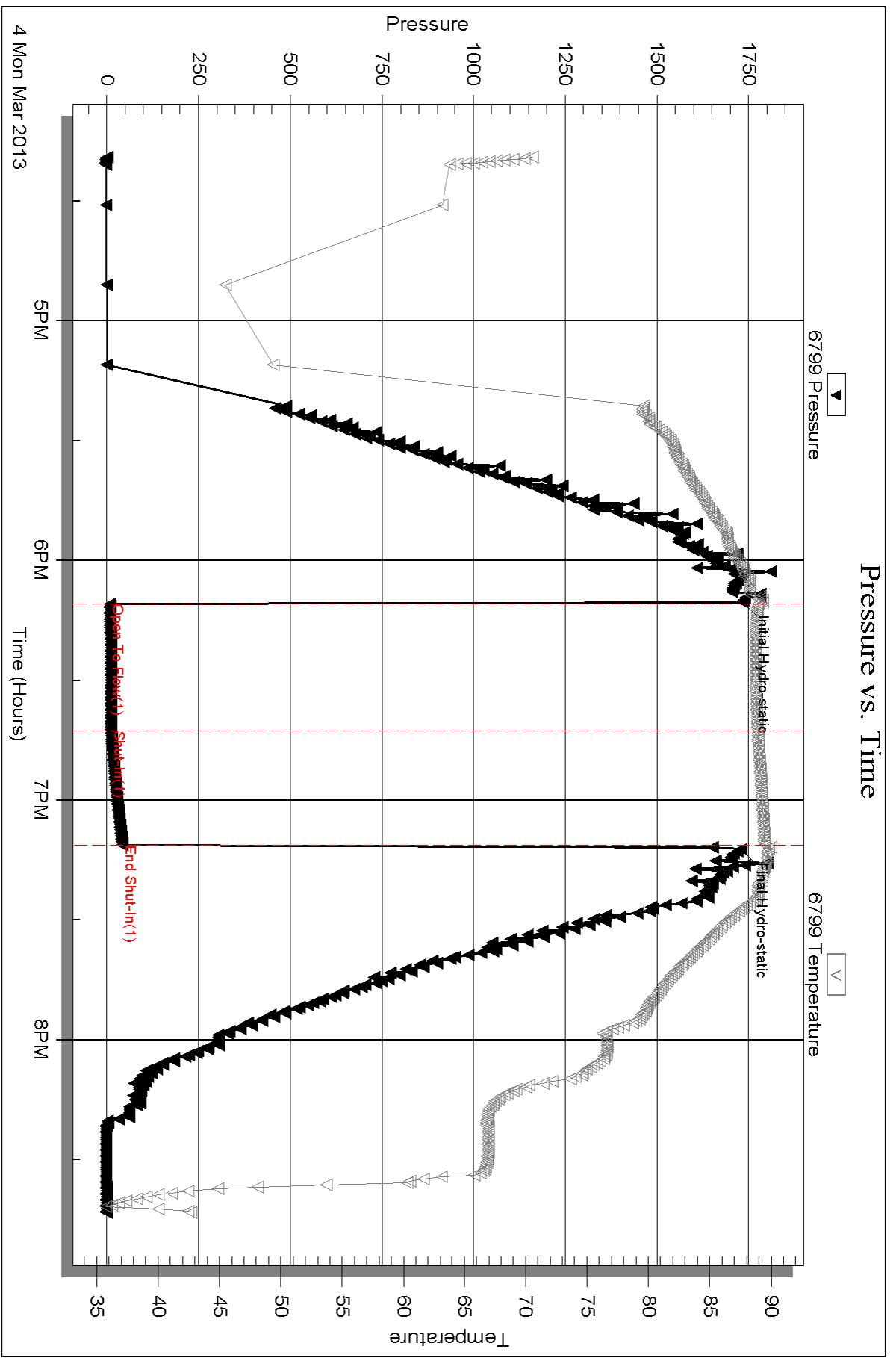
Length ft	Description	Volume bbl
3.00	Mud 100M	0.015

Total Length: 3.00 ft Total Volume: 0.015 bbl

Num Fluid Samples: 0 Num Gas Bombs: 0 Serial #:

Laboratory Name: Laboratory Location:

Recovery Comments:



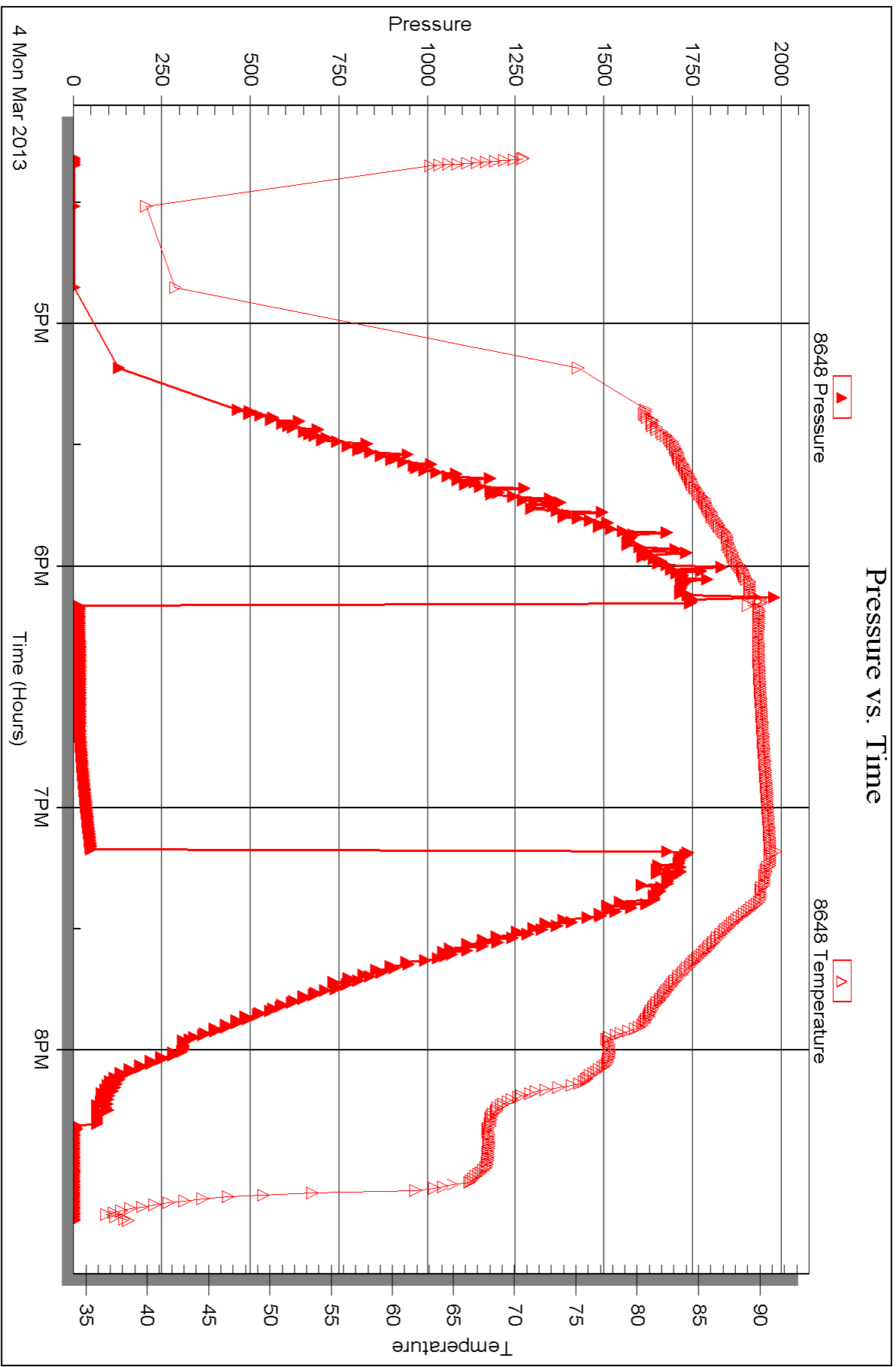
Serial #: 8648

Inside

Baird Oil Co., Inc

27-3s-22w Norton KS

DST Test Number: 1





DRILL STEM TEST REPORT

Prepared For: **Baird Oil Co., Inc**

113 W Main
Logan, KS 67649

ATTN: Rich Bell

27-3s-22w Norton,KS

Esslinger Ranch Inc #1-27

Start Date: 2013.03.05 @ 02:40:00

End Date: 2013.03.05 @ 08:33:45

Job Ticket #: 51207 DST #: 2

Trilobite Testing, Inc
PO Box 362 Hays, KS 67601
ph: 785-625-4778 fax: 785-625-5620

Printed: 2013.03.11 @ 13:05:55

Baird Oil Co., Inc
Esslinger Ranch Inc #1-27
27-3s-22w Norton,KS
DST # 2
LKC "C"
2013.03.05



TRILOBITE TESTING, INC.

DRILL STEM TEST REPORT

Baird Oil Co., Inc
 113 W Main
 Logan, KS 67649
 ATTN: Rich Bell

Esslinger Ranch Inc #1-27
27-3s-22w Norton,KS
 Job Ticket: 51207 **DST#: 2**
 Test Start: 2013.03.05 @ 02:40:00

GENERAL INFORMATION:

Formation: **LKC "C"**
 Deviated: No Whipstock: ft (KB)
 Time Tool Opened: 05:26:30
 Time Test Ended: 08:33:45
Interval: 3550.00 ft (KB) To 3570.00 ft (KB) (TVD)
 Total Depth: 3570.00 ft (KB) (TVD)
 Hole Diameter: 7.88 inches Hole Condition: Good
 Test Type: Conventional Bottom Hole (Initial)
 Tester: Kevin Mack
 Unit No: 43
 Reference Elevations: 2299.00 ft (KB)
 2289.00 ft (CF)
 KB to GR/CF: 10.00 ft

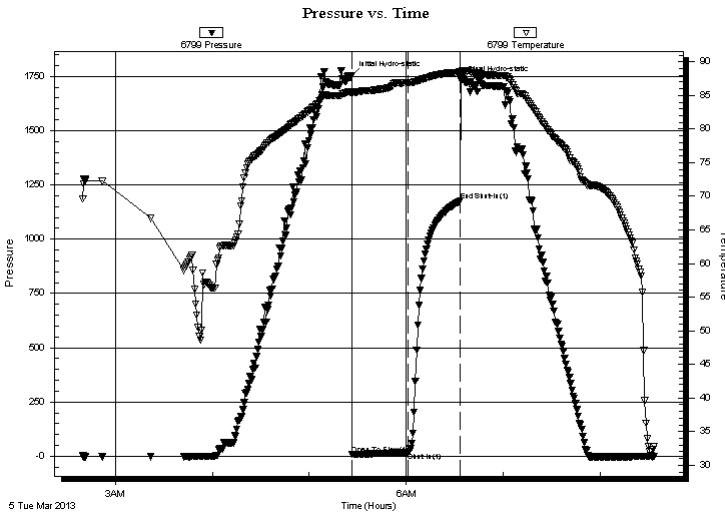
Serial #: 6799

Inside

Press @ Run Depth: 16.01 psig @ 3551.00 ft (KB) Capacity: 8000.00 psig
 Start Date: 2013.03.05 End Date: 2013.03.05 Last Calib.: 2013.03.05
 Start Time: 02:40:05 End Time: 08:33:44 Time On Btm: 2013.03.05 @ 05:26:00
 Time Off Btm: 2013.03.05 @ 06:34:00

TEST COMMENT: 30 - IF- 1/4" Blow died in 15 min
 30 - IS- No Return
 Pulled tool after Initial Shut In.

PRESSURE SUMMARY



Time (Min.)	Pressure (psig)	Temp (deg F)	Annotation
0	1753.61	85.52	Initial Hydro-static
1	8.35	85.38	Open To Flow (1)
35	16.01	86.90	Shut-In(1)
68	1176.29	88.50	End Shut-In(1)
68	1730.14	88.60	Final Hydro-static

Recovery

Length (ft)	Description	Volume (bbl)
5.00	Mud 100M	0.02

Gas Rates

Choke (inches)	Pressure (psig)	Gas Rate (Mcf/d)



**TRILOBITE
TESTING, INC.**

DRILL STEM TEST REPORT

TOOL DIAGRAM

Baird Oil Co., Inc
113 W Main
Logan, KS 67649
ATTN: Rich Bell

Esslinger Ranch Inc #1-27
27-3s-22w Norton,KS
Job Ticket: 51207 **DST#: 2**
Test Start: 2013.03.05 @ 02:40:00

Tool Information

Drill Pipe:	Length: 3441.00 ft	Diameter: 3.80 inches	Volume: 48.27 bbl	Tool Weight:	2000.00 lb
Heavy Wt. Pipe:	Length: 0.00 ft	Diameter: 0.00 inches	Volume: 0.00 bbl	Weight set on Packer:	25000.00 lb
Drill Collar:	Length: 120.00 ft	Diameter: 2.25 inches	Volume: 0.59 bbl	Weight to Pull Loose:	50000.00 lb
			<u>Total Volume: 48.86 bbl</u>	Tool Chased	ft
Drill Pipe Above KB:	32.00 ft			String Weight: Initial	45000.00 lb
Depth to Top Packer:	3550.00 ft			Final	45000.00 lb
Depth to Bottom Packer:	ft				
Interval between Packers:	20.00 ft				
Tool Length:	41.00 ft				
Number of Packers:	2	Diameter: 6.75 inches			

Tool Comments:

Tool Description	Length (ft)	Serial No.	Position	Depth (ft)	Accum. Lengths
-------------------------	--------------------	-------------------	-----------------	-------------------	-----------------------

Change Over Sub	1.00			3530.00	
Shut In Tool	5.00			3535.00	
Hydraulic tool	5.00			3540.00	
Packer	5.00			3545.00	21.00 Bottom Of Top Packer
Packer	5.00			3550.00	
Stubb	1.00			3551.00	
Recorder	0.00	6799	Inside	3551.00	
Recorder	0.00	8648	Inside	3551.00	
Perforations	5.00			3556.00	
Perforations	9.00			3565.00	
Bullnose	5.00			3570.00	20.00 Bottom Packers & Anchor

Total Tool Length: 41.00



**TRILOBITE
TESTING, INC.**

DRILL STEM TEST REPORT

FLUID SUMMARY

Baird Oil Co., Inc
113 W Main
Logan, KS 67649
ATTN: Rich Bell

Esslinger Ranch Inc #1-27
27-3s-22w Norton,KS
Job Ticket: 51207 **DST#: 2**
Test Start: 2013.03.05 @ 02:40:00

Mud and Cushion Information

Mud Type: Gel Chem	Cushion Type:	Oil API:	deg API
Mud Weight: 9.00 lb/gal	Cushion Length: ft	Water Salinity:	ppm
Viscosity: 62.00 sec/qt	Cushion Volume: bbl		
Water Loss: 6.38 in ³	Gas Cushion Type:		
Resistivity: 0.00 ohm.m	Gas Cushion Pressure: psig		
Salinity: 1600.00 ppm			
Filter Cake: 1.00 inches			

Recovery Information

Recovery Table

Length ft	Description	Volume bbl
5.00	Mud 100M	0.025

Total Length: 5.00 ft Total Volume: 0.025 bbl
Num Fluid Samples: 0 Num Gas Bombs: 0 Serial #:
Laboratory Name: Laboratory Location:
Recovery Comments:

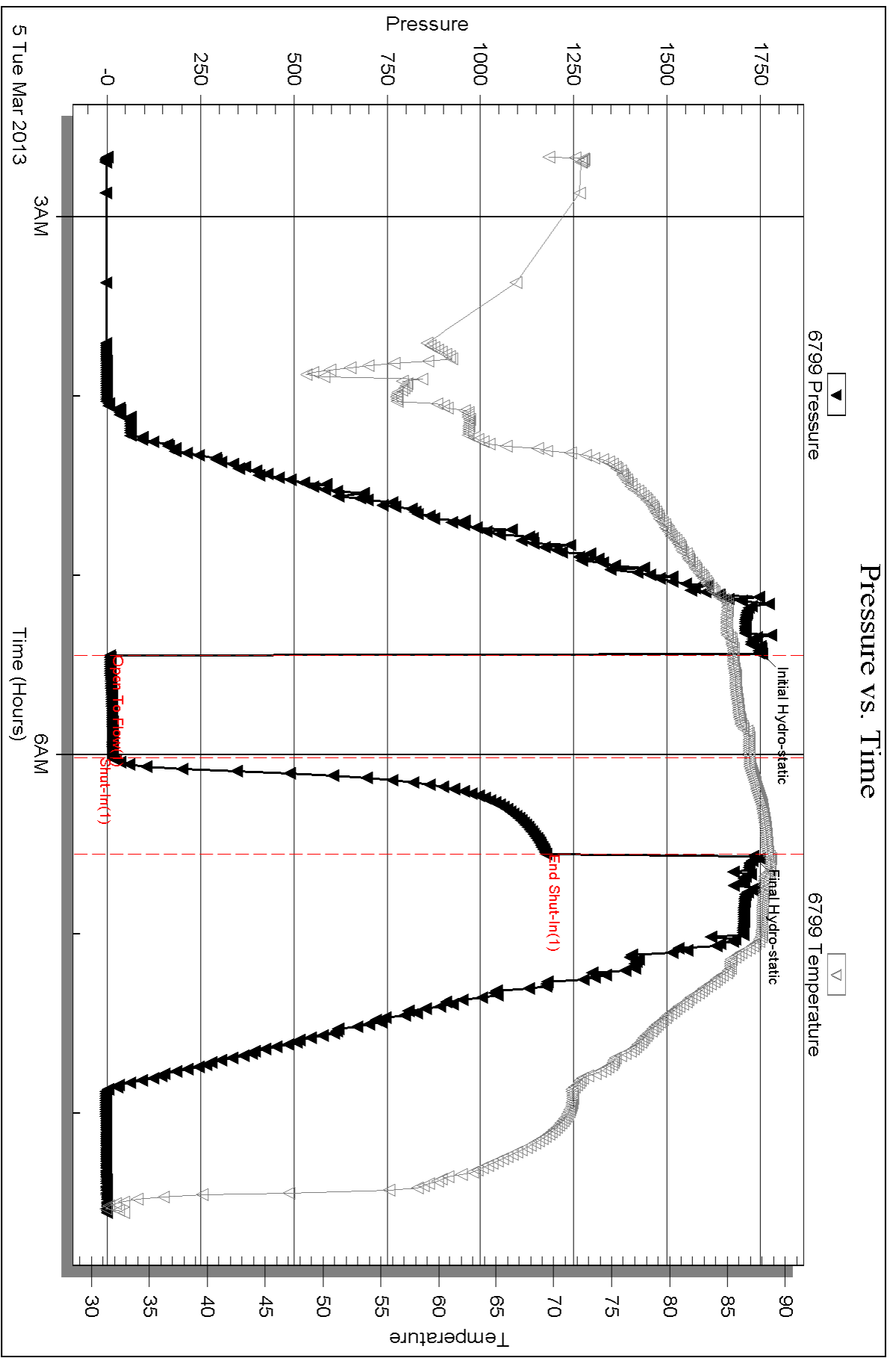
Serial #: 6799

Inside

Baird Oil Co., Inc

27-3s-22w Norton KS

DST Test Number: 2



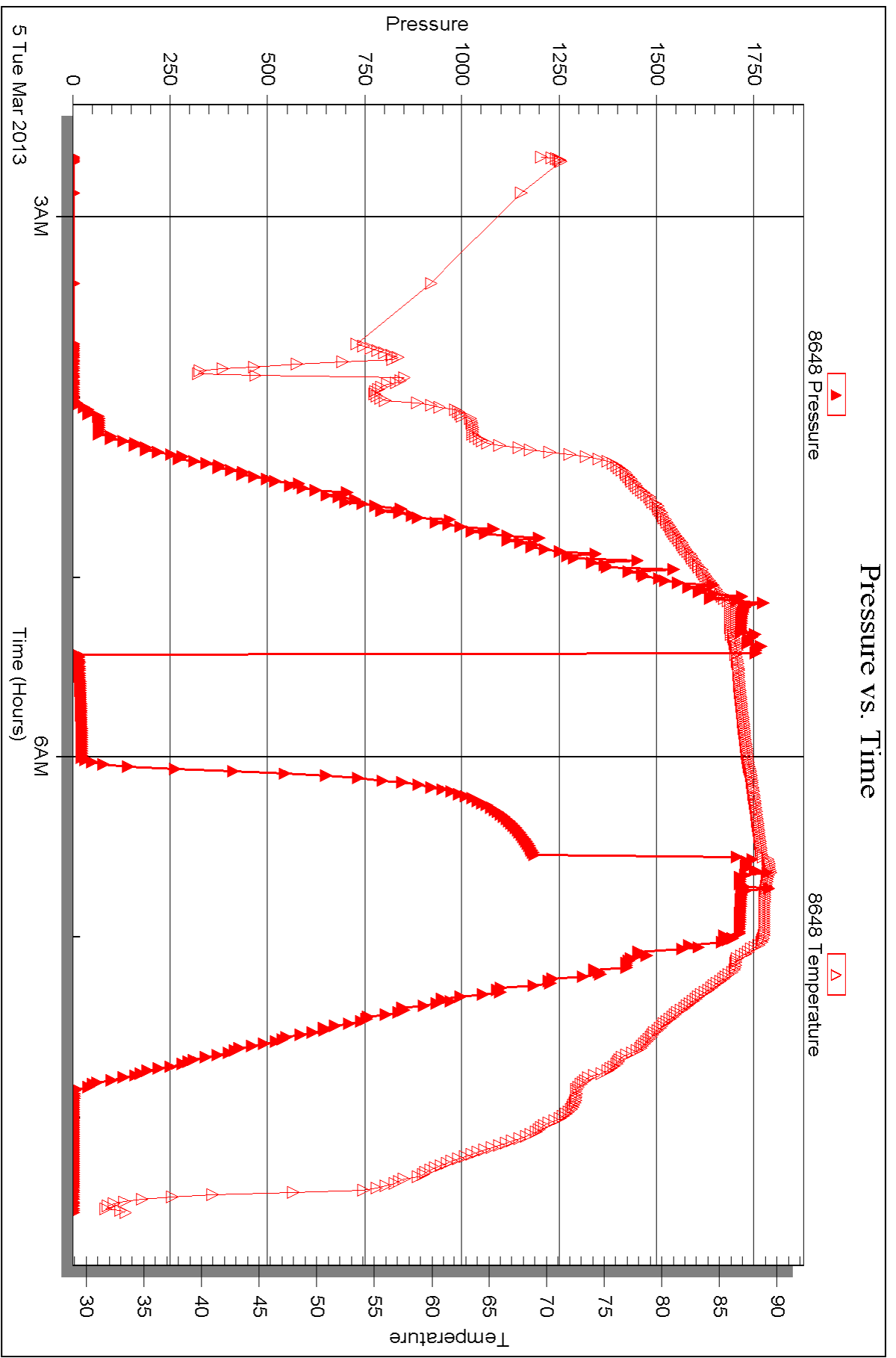
Serial #: 8648

Inside

Baird Oil Co., Inc

27-3s-22w Norton KS

DST Test Number: 2



Triobite Testing, Inc

Ref. No: 51207

Printed: 2013.03.11 @ 13:05:58



DRILL STEM TEST REPORT

Prepared For: **Baird Oil Co., Inc**

113 W Main
Logan, KS 67649

ATTN: Rich Bell

27-3s-22w Norton,KS

Esslinger Ranch Inc #1-27

Start Date: 2013.03.05 @ 14:45:00

End Date: 2013.03.05 @ 19:28:45

Job Ticket #: 51208 DST #: 3

Trilobite Testing, Inc

PO Box 362 Hays, KS 67601

ph: 785-625-4778 fax: 785-625-5620

Printed: 2013.03.11 @ 13:05:01



**TRILOBITE
TESTING, INC.**

DRILL STEM TEST REPORT

Baird Oil Co., Inc
113 W Main
Logan, KS 67649
ATTN: Rich Bell

Esslinger Ranch Inc #1-27
27-3s-22w Norton,KS
Job Ticket: 51208 **DST#: 3**
Test Start: 2013.03.05 @ 14:45:00

GENERAL INFORMATION:

Formation: **LKC "D"**
 Deviated: No Whipstock: ft (KB)
 Time Tool Opened: 16:12:45
 Time Test Ended: 19:28:45
 Interval: **3672.00 ft (KB) To 3592.00 ft (KB) (TVD)**
 Total Depth: 3592.00 ft (KB) (TVD)
 Hole Diameter: 7.88 inches Hole Condition: Good
 Test Type: Conventional Bottom Hole (Initial)
 Tester: Kevin Mack
 Unit No: 43
 Reference Elevations: 2299.00 ft (KB)
 2289.00 ft (CF)
 KB to GR/CF: 10.00 ft

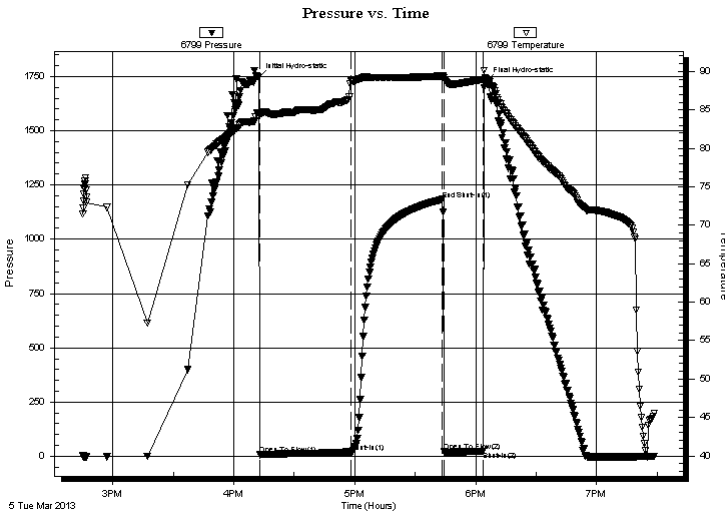
Serial #: 6799

Inside

Press @ Run Depth: 19.04 psig @ 3573.00 ft (KB) Capacity: 8000.00 psig
 Start Date: 2013.03.05 End Date: 2013.03.05 Last Calib.: 2013.03.05
 Start Time: 14:45:05 End Time: 19:28:44 Time On Btm: 2013.03.05 @ 16:12:15
 Time Off Btm: 2013.03.05 @ 18:05:00

TEST COMMENT: 45 - IF- Surface Blow built to 1 1/4"
 45 - IS- No Return
 15 - FF- No Blow
 Pulled tool at end of Final Flow Period

PRESSURE SUMMARY



Time (Min.)	Pressure (psig)	Temp (deg F)	Annotation
0	1744.36	84.68	Initial Hydro-static
1	7.02	84.27	Open To Flow (1)
46	19.04	88.76	Shut-In(1)
91	1183.45	89.41	End Shut-In(1)
92	20.57	89.15	Open To Flow (2)
112	22.76	88.98	Shut-In(2)
113	1727.69	88.98	Final Hydro-static

Recovery

Length (ft)	Description	Volume (bbl)
10.00	MW 50M 50W	0.05

Gas Rates

Choke (inches)	Pressure (psig)	Gas Rate (Mcf/d)



**TRILOBITE
TESTING, INC.**

DRILL STEM TEST REPORT

TOOL DIAGRAM

Baird Oil Co., Inc
113 W Main
Logan, KS 67649
ATTN: Rich Bell

Esslinger Ranch Inc #1-27
27-3s-22w Norton,KS
Job Ticket: 51208 **DST#: 3**
Test Start: 2013.03.05 @ 14:45:00

Tool Information

Drill Pipe:	Length: 3441.00 ft	Diameter: 3.80 inches	Volume: 48.27 bbl	Tool Weight: 2000.00 lb
Heavy Wt. Pipe:	Length: ft	Diameter: 0.00 inches	Volume: 0.00 bbl	Weight set on Packer: 25000.00 lb
Drill Collar:	Length: 120.00 ft	Diameter: 2.25 inches	Volume: 0.59 bbl	Weight to Pull Loose: 52000.00 lb
			<u>Total Volume: 48.86 bbl</u>	Tool Chased ft
Drill Pipe Above KB:	10.00 ft			String Weight: Initial 45000.00 lb
Depth to Top Packer:	3572.00 ft			Final 45000.00 lb
Depth to Bottom Packer:	ft			
Interval between Packers:	20.00 ft			
Tool Length:	41.00 ft			
Number of Packers:	2	Diameter: 6.75 inches		

Tool Comments:

Tool Description	Length (ft)	Serial No.	Position	Depth (ft)	Accum. Lengths
Change Over Sub	1.00			3552.00	
Shut In Tool	5.00			3557.00	
Hydraulic tool	5.00			3562.00	
Packer	5.00			3567.00	21.00 Bottom Of Top Packer
Packer	5.00			3572.00	
Stubb	1.00			3573.00	
Recorder	0.00	6799	Inside	3573.00	
Recorder	0.00	8648	Inside	3573.00	
Perforations	14.00			3587.00	
Bullnose	5.00			3592.00	20.00 Bottom Packers & Anchor
Total Tool Length:	41.00				



**TRILOBITE
TESTING, INC.**

DRILL STEM TEST REPORT

FLUID SUMMARY

Baird Oil Co., Inc
113 W Main
Logan, KS 67649
ATTN: Rich Bell

Esslinger Ranch Inc #1-27
27-3s-22w Norton,KS
Job Ticket: 51208 **DST#: 3**
Test Start: 2013.03.05 @ 14:45:00

Mud and Cushion Information

Mud Type: Gel Chem	Cushion Type:	Oil API:	deg API
Mud Weight: 9.00 lb/gal	Cushion Length: ft	Water Salinity:	30000 ppm
Viscosity: 55.00 sec/qt	Cushion Volume: bbl		
Water Loss: 6.78 in ³	Gas Cushion Type:		
Resistivity: 0.00 ohm.m	Gas Cushion Pressure: psig		
Salinity: 1900.00 ppm			
Filter Cake: 2.00 inches			

Recovery Information

Recovery Table

Length ft	Description	Volume bbl
10.00	MW 50M 50W	0.049

Total Length: 10.00 ft Total Volume: 0.049 bbl

Num Fluid Samples: 0 Num Gas Bombs: 0 Serial #:

Laboratory Name: Laboratory Location:

Recovery Comments: RW = .28 @ 62 deg = 30,000ppm

Serial #: 6799

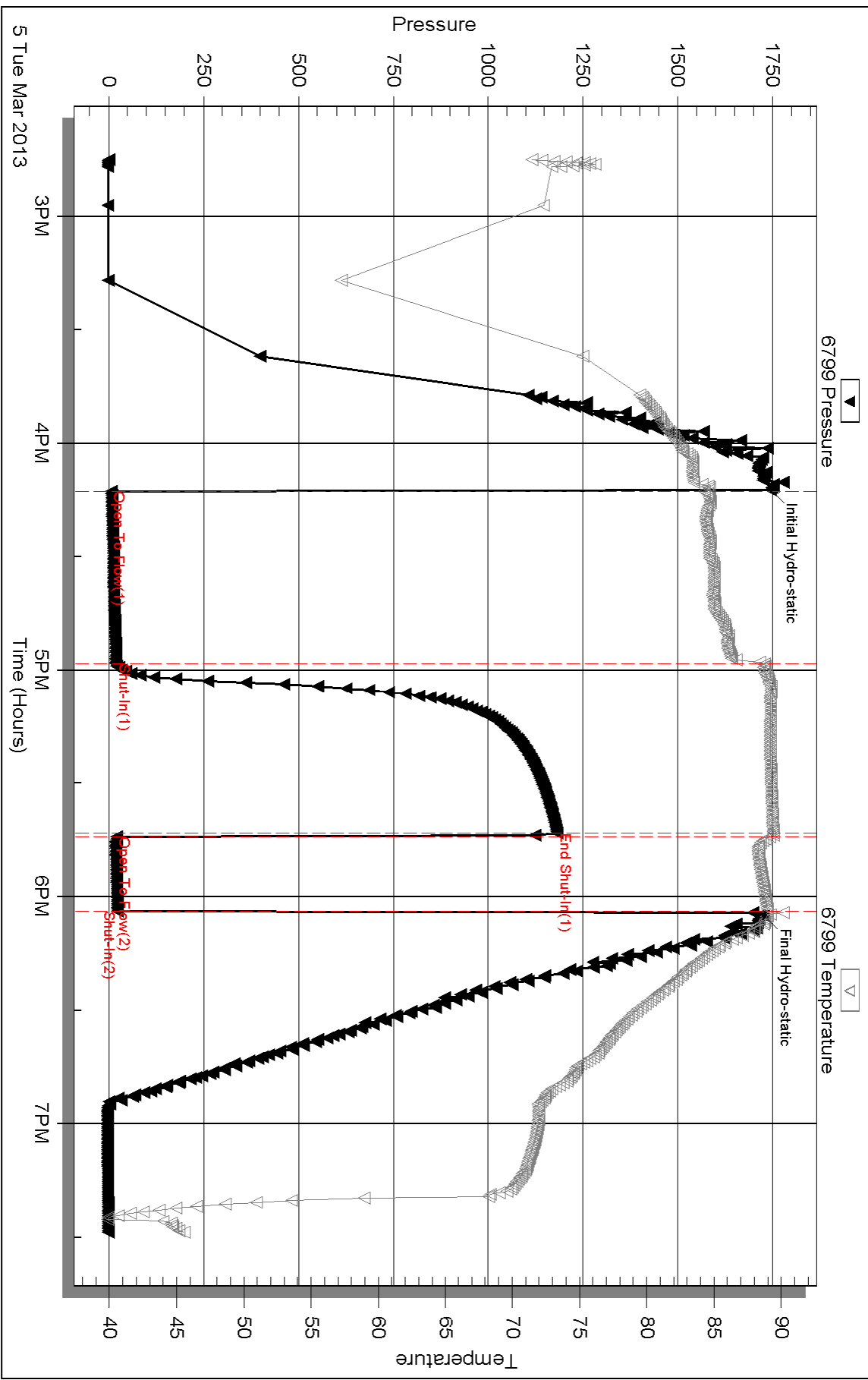
Inside

Baird Oil Co., Inc

27-35-22w Norton KS

DST Test Number: 3

Pressure vs. Time



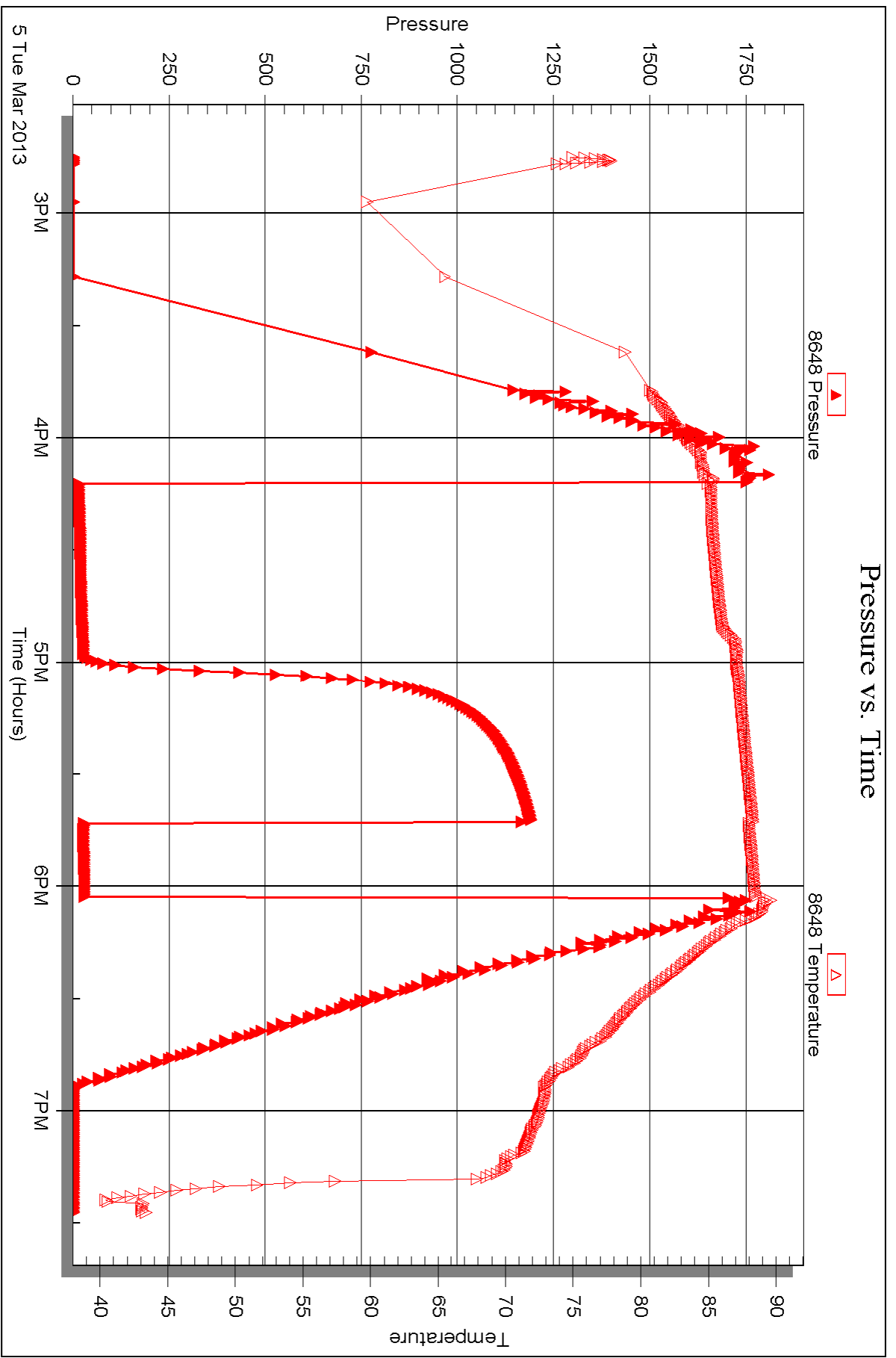
Serial #: 8648

Inside

Baird Oil Co., Inc

27-3s-22w Norton KS

DST Test Number: 3



Triobite Testing, Inc

Ref. No: 51208

Printed: 2013.03.11 @ 13:05:04



DRILL STEM TEST REPORT

Prepared For: **Baird Oil Co., Inc**

113 W Main
Logan, KS 67649

ATTN: Rich Bell

27-3s-22w Norton,KS

Esslinger Ranch Inc #1-27

Start Date: 2013.03.06 @ 10:30:00

End Date: 2013.03.06 @ 17:23:00

Job Ticket #: 51209 DST #: 4

Trilobite Testing, Inc
PO Box 362 Hays, KS 67601
ph: 785-625-4778 fax: 785-625-5620

Printed: 2013.03.11 @ 13:03:26



**TRILOBITE
TESTING, INC.**

DRILL STEM TEST REPORT

Baird Oil Co., Inc
113 W Main
Logan, KS 67649
ATTN: Rich Bell

Esslinger Ranch Inc #1-27
27-3s-22w Norton,KS
Job Ticket: 51209 **DST#: 4**
Test Start: 2013.03.06 @ 10:30:00

GENERAL INFORMATION:

Formation: **LKC "J-K"**
Deviated: No Whipstock: ft (KB)
Time Tool Opened: 12:27:30
Time Test Ended: 17:23:00
Interval: **3659.00 ft (KB) To 3712.00 ft (KB) (TVD)**
Total Depth: 3712.00 ft (KB) (TVD)
Hole Diameter: 7.88 inches Hole Condition: Good
Test Type: Conventional Bottom Hole (Initial)
Tester: Kevin Mack
Unit No: 43
Reference Elevations: 2299.00 ft (KB)
2289.00 ft (CF)
KB to GR/CF: 10.00 ft

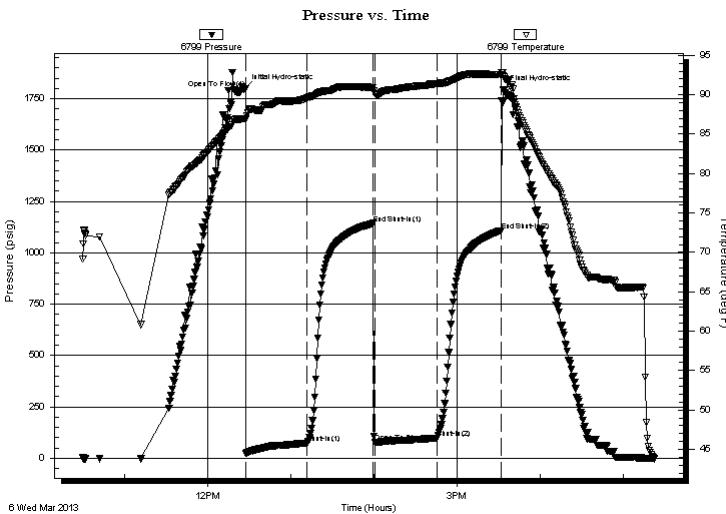
Serial #: 6799

Inside

Press @ Run Depth: 98.55 psig @ 3660.00 ft (KB) Capacity: 8000.00 psig
Start Date: 2013.03.06 End Date: 2013.03.06 Last Calib.: 2013.03.07
Start Time: 10:30:05 End Time: 17:22:59 Time On Btm: 2013.03.06 @ 12:27:00
Time Off Btm: 2013.03.06 @ 15:33:30

TEST COMMENT: 45 - IF- BoB in 28 min
45 - IS- Surface Return built to 1"
45 - FF- BoB in 25 min
45 - FS- Surface Return built to 2 1/2"

PRESSURE SUMMARY



Time (Min.)	Pressure (psig)	Temp (deg F)	Annotation
0	1797.55	86.94	Initial Hydro-static
1	1799.95	86.94	Open To Flow (1)
45	72.79	89.55	Shut-In(1)
93	1143.02	90.93	End Shut-In(1)
94	78.59	90.15	Open To Flow (2)
139	98.55	91.40	Shut-In(2)
185	1106.93	92.54	End Shut-In(2)
187	1794.06	92.44	Final Hydro-static

Recovery

Length (ft)	Description	Volume (bbl)
120.00	OCM 40o 60M	0.59
62.00	MCO 60M 40o	0.87
50.00	MCO 10M 90o	0.70
0.00	206' GIP	0.00

Gas Rates

	Choke (inches)	Pressure (psig)	Gas Rate (Mcf/d)



**TRILOBITE
TESTING, INC.**

DRILL STEM TEST REPORT

TOOL DIAGRAM

Baird Oil Co., Inc
113 W Main
Logan, KS 67649
ATTN: Rich Bell

Esslinger Ranch Inc #1-27
27-3s-22w Norton,KS
Job Ticket: 51209 **DST#: 4**
Test Start: 2013.03.06 @ 10:30:00

Tool Information

Drill Pipe:	Length: 3528.00 ft	Diameter: 3.80 inches	Volume: 49.49 bbl	Tool Weight: 2000.00 lb
Heavy Wt. Pipe:	Length: ft	Diameter: 0.00 inches	Volume: 0.00 bbl	Weight set on Packer: 25000.00 lb
Drill Collar:	Length: 120.00 ft	Diameter: 2.25 inches	Volume: 0.59 bbl	Weight to Pull Loose: 65000.00 lb
			<u>Total Volume: 50.08 bbl</u>	Tool Chased ft
Drill Pipe Above KB:	10.00 ft			String Weight: Initial 45000.00 lb
Depth to Top Packer:	3659.00 ft			Final 48000.00 lb
Depth to Bottom Packer:	ft			
Interval between Packers:	53.00 ft			
Tool Length:	74.00 ft			
Number of Packers:	2	Diameter: 6.75 inches		

Tool Comments:

Tool Description	Length (ft)	Serial No.	Position	Depth (ft)	Accum. Lengths
Change Over Sub	1.00			3639.00	
Shut In Tool	5.00			3644.00	
Hydraulic tool	5.00			3649.00	
Packer	5.00			3654.00	21.00 Bottom Of Top Packer
Packer	5.00			3659.00	
Stubb	1.00			3660.00	
Recorder	0.00	6799	Inside	3660.00	
Recorder	0.00	8648	Inside	3660.00	
Perforations	14.00			3674.00	
Change Over Sub	1.00			3675.00	
Drill Pipe	31.00			3706.00	
Change Over Sub	1.00			3707.00	
Bullnose	5.00			3712.00	53.00 Bottom Packers & Anchor

Total Tool Length: 74.00



**TRILOBITE
TESTING, INC.**

DRILL STEM TEST REPORT

FLUID SUMMARY

Baird Oil Co., Inc
113 W Main
Logan, KS 67649
ATTN: Rich Bell

Esslinger Ranch Inc #1-27
27-3s-22w Norton,KS
Job Ticket: 51209 **DST#: 4**
Test Start: 2013.03.06 @ 10:30:00

Mud and Cushion Information

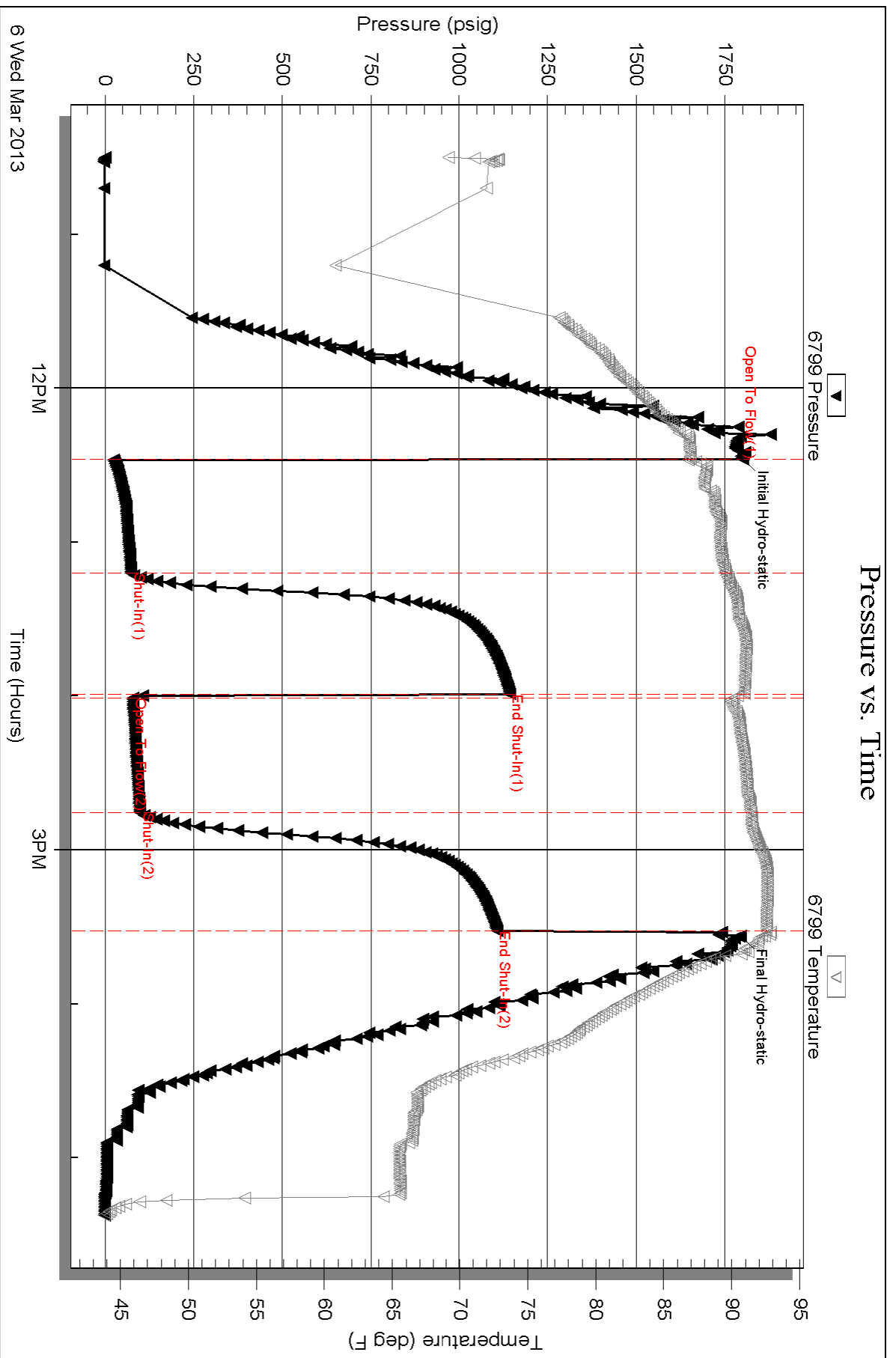
Mud Type: Gel Chem	Cushion Type:	Oil API: 26 deg API
Mud Weight: 9.00 lb/gal	Cushion Length: ft	Water Salinity: ppm
Viscosity: 56.00 sec/qt	Cushion Volume: bbl	
Water Loss: 6.39 in ³	Gas Cushion Type:	
Resistivity: 0.00 ohm.m	Gas Cushion Pressure: psig	
Salinity: 2000.00 ppm		
Filter Cake: 2.00 inches		

Recovery Information

Recovery Table

Length ft	Description	Volume bbl
120.00	OCM 40o 60M	0.590
62.00	MCO 60M 40o	0.870
50.00	MCO 10M 90o	0.701
0.00	206' GIP	0.000

Total Length: 232.00 ft Total Volume: 2.161 bbl
 Num Fluid Samples: 0 Num Gas Bombs: 0 Serial #:
 Laboratory Name: Laboratory Location:
 Recovery Comments: Oil API= 27@70 = 26cor



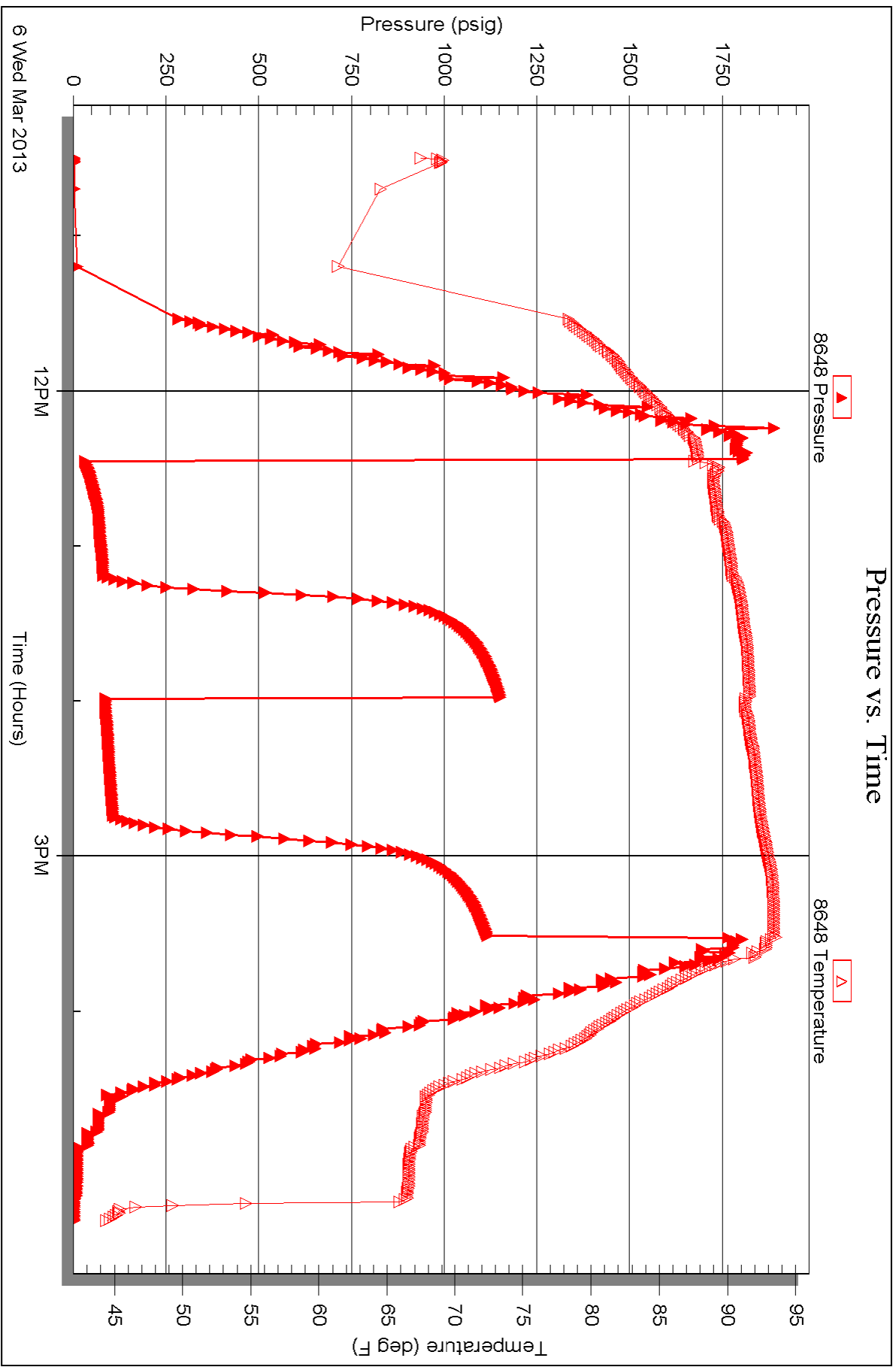
Serial #: 8648

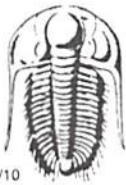
Inside

Baird Oil Co., Inc

27-3s-22w Norton KS

DST Test Number: 4





TRILOBITE TESTING INC.

1515 Commerce Parkway • Hays, Kansas 67601

Test Ticket

NO. 51206

Well Name & No. Essinger Ranch, Inc. #1-27 Test No. 1 Date 3-4-13
 Company Beird Oil Co., Inc. Elevation 2299 KB 2289 GL
 Address 113 W Main Logan, KS 67649
 Co. Rep / Geo. Rich Bell Rig WW#12
 Location: Sec. 27 Twp. 3S Rge. 22W Co. Norton State KS

Interval Tested 3526-3546 Zone Tested LKC "A"
 Anchor Length 20' Drill Pipe Run 3410 Mud Wt. 9.0
 Top Packer Depth 3522 Drill Collars Run 120' Vis 62
 Bottom Packer Depth 3526 Wt. Pipe Run 0 WL 6.4
 Total Depth 3546 Chlorides 1600 ppm System LCM 1#

Blow Description IF - 1/4" Blow died in 20 min.
ISI - NO Return
FF - Pulled tool after initial shut in.
FST - N/A

Rec	Feet of	%gas	%oil	%water	%mud
<u>3</u>	<u>Mud</u>			<u>100%</u>	
Rec	Feet of	%gas	%oil	%water	%mud
Rec	Feet of	%gas	%oil	%water	%mud
Rec	Feet of	%gas	%oil	%water	%mud
Rec	Feet of	%gas	%oil	%water	%mud

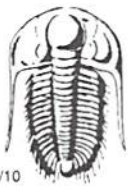
Rec Total 3 BHT 89 Gravity - API RW - @ - ° F Chlorides - ppm

(A) Initial Hydrostatic 1732 Test 1150 T-On Location 3:50 PM
 (B) First Initial Flow 8 Jars _____ T-Started 4:19 PM
 (C) First Final Flow 11 Safety Joint _____ T-Open 6:12 PM
 (D) Initial Shut-In 42 Circ Sub N/C T-Pulled 7:12 PM
 (E) Second Initial Flow - Hourly Standby _____ T-Out 8:44 PM
 (F) Second Final Flow - Mileage 93 RT 144.15
 (G) Final Shut-In - Sampler _____
 (H) Final Hydrostatic 1728 Straddle _____

Initial Open 30 Shale Packer _____
 Initial Shut-In 30 Ruined Packer _____
 Final Flow - Extra Packer _____
 Final Shut-In - Extra Copies _____
 Sub Total 0
 Total 1294.15
 MP/DST Disc't _____
 Sub Total 1294.15

Approved By _____ Our Representative [Signature]

Trilobite Testing Inc. shall not be liable for damaged of any kind of the property or personnel of the one for whom a test is made, or for any loss suffered or sustained, directly or indirectly, through the use of its equipment, or its statements or opinion concerning the results of any test, tools lost or damaged in the hole shall be paid for at cost by the party for whom the test is made.



TRILOBITE TESTING INC.

1515 Commerce Parkway • Hays, Kansas 67601

Test Ticket

NO. 51207

Well Name & No. Esslinger Ranch, Inc #1-27 Test No. 2 Date 3-5-13
 Company Baird Oil Co., Inc. Elevation 2299 KB 2289 GL
 Address 113 W Main Logan, KS 67649
 Co. Rep / Geo. Rich Bell Rig WW#12
 Location: Sec. 27 Twp. 3S Rge. 22W Co. Norton State KS

Interval Tested 3550-3570 Zone Tested LKC "C"
 Anchor Length 20 Drill Pipe Run 3441 Mud Wt. 9.00
 Top Packer Depth 3546 Drill Collars Run 120 Vis 62
 Bottom Packer Depth 2550 Wt. Pipe Run 0 WL 6.4
 Total Depth 3570 Chlorides 1,600 ppm System LCM 1#

Blow Description IF - 1/4" Blow direct in 15 min.
ISI - No Return
FF - pulled tool after Initial Shut In.
FSI - N/A

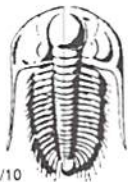
Rec	Feet of	%gas	%oil	%water	%mud
<u>5</u>	<u>Mud</u>			<u>1000</u>	
Rec	Feet of	%gas	%oil	%water	%mud
Rec	Feet of	%gas	%oil	%water	%mud
Rec	Feet of	%gas	%oil	%water	%mud
Rec	Feet of	%gas	%oil	%water	%mud

Rec Total 5 BHT 88 Gravity - API RW - @ - ° F Chlorides - ppm

(A) Initial Hydrostatic <u>1753</u>	<input checked="" type="checkbox"/> Test 1150	T-On Location <u>2:15 AM</u>
(B) First Initial Flow <u>8</u>	<input type="checkbox"/> Jars	T-Started <u>2:40 AM</u>
(C) First Final Flow <u>16</u>	<input type="checkbox"/> Safety Joint	T-Open <u>5:30 AM</u>
(D) Initial Shut-In <u>1176</u>	<input checked="" type="checkbox"/> Circ Sub <u>N/C</u>	T-Pulled <u>6:30 AM</u>
(E) Second Initial Flow <u>-</u>	<input type="checkbox"/> Hourly Standby	T-Out <u>8:35 AM</u>
(F) Second Final Flow <u>-</u>	<input checked="" type="checkbox"/> Mileage <u>93 RT</u> 144.15	Comments
(G) Final Shut-In <u>-</u>	<input type="checkbox"/> Sampler	
(H) Final Hydrostatic <u>1730</u>	<input type="checkbox"/> Straddle	<input type="checkbox"/> Ruined Shale Packer
Initial Open <u>30</u>	<input type="checkbox"/> Shale Packer	<input type="checkbox"/> Ruined Packer
Initial Shut-In <u>30</u>	<input type="checkbox"/> Extra Packer	<input type="checkbox"/> Extra Copies
Final Flow <u>-</u>	<input type="checkbox"/> Extra Recorder	Sub Total <u>0</u>
Final Shut-In <u>-</u>	<input type="checkbox"/> Day Standby	Total <u>1294.15</u>
	<input type="checkbox"/> Accessibility	MP/DST Disc't
	Sub Total <u>1294.15</u>	

Approved By _____ Our Representative [Signature]

Trilobite Testing Inc. shall not be liable for damaged of any kind of the property or personnel of the one for whom a test is made, or for any loss suffered or sustained, directly or indirectly, through the use of its equipment, or its statements or opinion concerning the results of any test, tools lost or damaged in the hole shall be paid for at cost by the party for whom the test is made.



TRILOBITE TESTING INC.

1515 Commerce Parkway • Hays, Kansas 67601

Test Ticket

NO. 51208

Well Name & No. Esslinger Ranch, Inc #1-27 Test No. 3 Date 3-5-13
 Company Beard Oil Co, Inc. Elevation 2299 KB 2289 GL
 Address 113 W Main Logan KS 67649
 Co. Rep / Geo. Rich Bell Rig WW#12
 Location: Sec. 27 Twp. 3S Rge. 22W Co. Norton State KS

Interval Tested 3572-3592 Zone Tested LKC "D"
 Anchor Length 20 Drill Pipe Run 3441 Mud Wt. 9.1
 Top Packer Depth 3568 Drill Collars Run 120 Vis 55
 Bottom Packer Depth 3572 Wt. Pipe Run 0 WL 6.8
 Total Depth 3592 Chlorides 1900 ppm System LCM 1#

Blow Description IF- Surface Blow built to 1 1/4"
ISI- NO Return
FF- NO Blow
FSE- Pulled tool after Final Flow Period

Rec	Feet of	%gas	%oil	%water	%mud
<u>10</u>	<u>MW</u>		<u>50</u>	<u>50</u>	
Rec	Feet of	%gas	%oil	%water	%mud
Rec	Feet of	%gas	%oil	%water	%mud
Rec	Feet of	%gas	%oil	%water	%mud
Rec	Feet of	%gas	%oil	%water	%mud

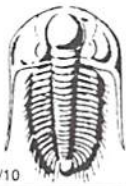
Rec Total 10 BHT 89 Gravity - API RW 28 @ 62° F Chlorides 30,000 ppm

(A) Initial Hydrostatic 1744 Test 1150 T-On Location 2:30 PM
 (B) First Initial Flow 7 Jars T-Started 2:45 PM
 (C) First Final Flow 19 Safety Joint T-Open 4:15 PM
 (D) Initial Shut-In 1183 Circ Sub N/C T-Pulled 6:00 AM
 (E) Second Initial Flow 20 Hourly Standby T-Out 7:30 PM
 (F) Second Final Flow 22 Mileage 93RT 144.15
 (G) Final Shut-In - Sampler
 (H) Final Hydrostatic 1727 Straddle

Ruined Shale Packer
 Ruined Packer
 Extra Copies
 Initial Open 45
 Initial Shut-In 45
 Final Flow 15
 Final Shut-In -
 Extra Recorder
 Day Standby
 Accessibility
 Sub Total 1294.15
 Total 1294.15
 MP/DST Disc't

Approved By _____ Our Representative [Signature]

Trilobite Testing Inc. shall not be liable for damaged of any kind of the property or personnel of the one for whom a test is made, or for any loss suffered or sustained, directly or indirectly, through the use of its equipment, or its statements or opinion concerning the results of any test, tools lost or damaged in the hole shall be paid for at cost by the party for whom the test is made.



TRILOBITE TESTING INC.

1515 Commerce Parkway • Hays, Kansas 67601

Test Ticket

NO. 51209

Well Name & No. Esslinger Ranch #1-27 Test No. 4 Date 3-6-13
 Company Beird Oil Co., Inc. Elevation 2249 KB 2289 GL
 Address 113 W Main Logan, KS 67649
 Co. Rep / Geo. Rich Bell Rig Low #12
 Location: Sec. 27 Twp. 35 Rge. 22W Co. Norton State KS

Interval Tested 3659-3712 Zone Tested LKC "J-K"
 Anchor Length 53 Drill Pipe Run 3528 Mud Wt. 9.1
 Top Packer Depth 3655 Drill Collars Run 120' Vis 56
 Bottom Packer Depth 3659 Wt. Pipe Run 0 WL 6.4
 Total Depth 3712 Chlorides 2,000 ppm System LCM 1.5#

Blow Description IF - BoB in 28 min.
ISI - Surface Return Built to 1"
FF - BoB in 25 min.
FBI - Surface Return Built to 2 1/2"

Rec	Feet of	%gas	%oil	%water	%mud
<u>50</u>	<u>MCO</u>	<u>90</u>		<u>10</u>	
<u>62</u>	<u>MCO</u>	<u>60</u>		<u>40</u>	
<u>120</u>	<u>OCM</u>	<u>40</u>		<u>60</u>	
<u>0</u>	<u>206' GIP</u>	<u>100</u>			

Rec Total 232 BHT 93 Gravity 26 API RW - @ - ° F Chlorides - ppm

(A) Initial Hydrostatic 1797 Test 1150 T-On Location 9:50 AM
 (B) First Initial Flow 23 Jars T-Started 10:30 AM
 (C) First Final Flow 72 Safety Joint T-Open 12:30 PM
 (D) Initial Shut-In 1143 Circ Sub N/C T-Pulled 3:30 PM
 (E) Second Initial Flow 78 Hourly Standby T-Out 6:40 PM
 (F) Second Final Flow 98 Mileage 93 RT x2 288.30 Comments 206' GIP
 (G) Final Shut-In 1106 Sampler Landed tools @
 (H) Final Hydrostatic 1794 Straddle 3:00 PM 3-7-13
 Ruined Shale Packer
 Ruined Packer
 Extra Copies

Initial Open 45 Shale Packer
 Initial Shut-In 45 Extra Packer
 Final Flow 45 Extra Recorder
 Final Shut-In 45 Day Standby
 Accessibility
 Sub Total 1438.30 Total 1438.30 MP/DST Disc't

Approved By _____ Our Representative

Trilobite Testing Inc. shall not be liable for damaged of any kind of the property or personnel of the one for whom a test is made, or for any loss suffered or sustained, directly or indirectly, through the use of its equipment, or its statements or opinion concerning the results of any test, tools lost or damaged in the hole shall be paid for at cost by the party for whom the test is made.